



## 2017 BOND PROJECTS – BOARD UPDATE

### Bunker Hill ES Replacement

Spring Branch Independent School District

Stantec Project No. 214000788

March 31, 2022

#### 1) PROJECT TEAM:

Owner:	Spring Branch ISD	Assoc. Supt. For Operations:	Travis Stanford
		Director of P&C:	Max Buja
SBISD Project No.	67224	Project Managers:	Geoff Bay
Architect:	Stantec Architecture, Inc.	Partner-in-Charge:	Jennifer Henrikson
		Project Manager:	Gary Dunn
CM@Risk:	Durotech		

#### 2) GENERAL SCOPE OF WORK:

Replacement of Bunker Hill Elementary School with new 700 student campus on existing site. Scope includes demolition of existing campus, construction of new building and associated site work.

##### **Off-Site Transition:**

Transition will be done on-site as determined feasible in Summer 2019 Test Fit Study

#### 3) BOND PLAN PROJECT TIMELINE:

PROJECT ADVISORY TEAM	JANUARY 2020 – AUGUST 2020
CM@R SELECTION	MARCH 2020
PROGRAMMING/FACT FINDING	OCTOBER 2019 – DECEMBER 2019
SCHEMATIC DESIGN	JANUARY 2020 – APRIL 2020
<b>DESIGN DEVELOPMENT</b>	APRIL 2020 – JUNE 2020
CONSTRUCTION DOCUMENTS	JUNE 2020 – SEPTEMBER 2020
PERMIT RECEIVED	JANUARY 2021
BIDDING / BOARD APPROVAL	SEPTEMBER 2020 – NOVEMBER 2020
CONSTRUCTION PHASE	<b>DECEMBER 2020 – AUGUST 2022</b>
OCCUPANCY	JUNE 2022

← Current Point

#### 4) PROJECT STATUS OVERVIEW

Project is in Construction phase.

#### 5) PAST 2-4 WEEKS PROJECT HIGHLIGHTS / MILESTONES:

- Interior Painting
- Interior Wall and Floor Tile
- Exterior Window Frames and glazing
- Exterior Brick
- Ceiling Grid Installation
- Casework Installation



**6) NEXT 2-4 WEEKS PROJECT HIGHLIGHTS / MILESTONES:**

- Continue Interior Drywall and painting
- Continue interior MEP installations
- Continue Exterior Masonry Installation
- Continue Interior Finishes

**7) PHOTOGRAPHS:**



Main Entry



**Stantec**

Stantec Architecture Inc.  
910 Louisiana Street, Suite 2600, Houston TX 77002



North Elevation



Kitchen Tiling



Jenga Wall Framing



Reception Area





Clerestory at Entry



Science Room Casework



Restroom Tiling with Fixtures



Classroom Courtyard



Corridor Ductwork



Classroom Wing Exterior at Stairs





Drinking Fountain Location at Student Restroom

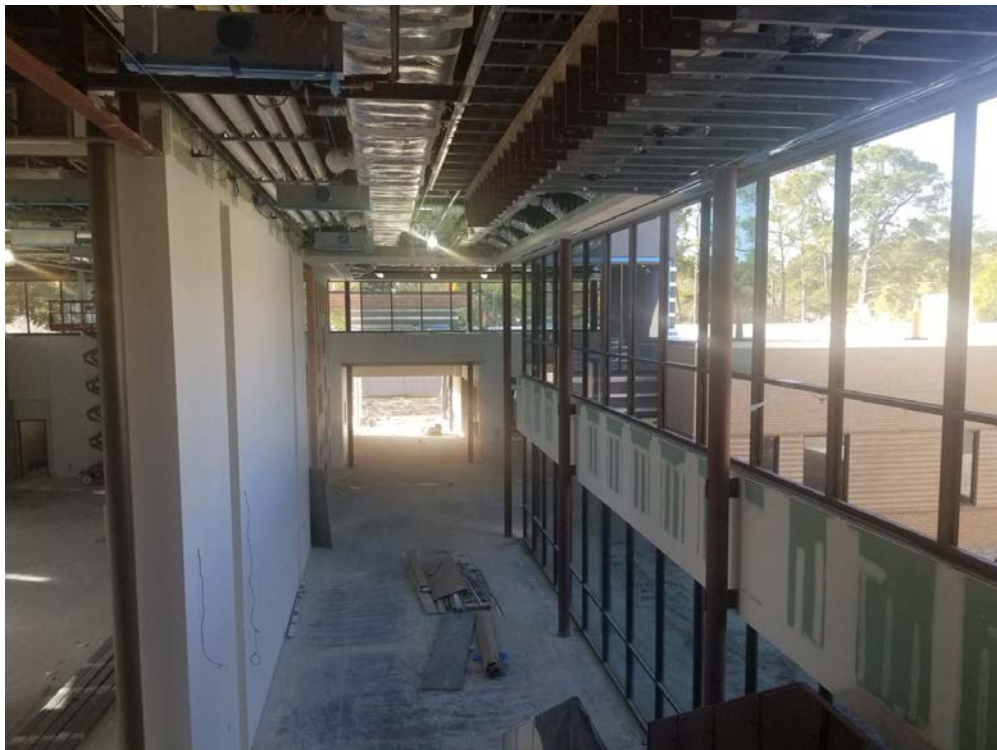


Classroom Ceiling Grid





Ceiling Grid Install



Corridor View 2<sup>nd</sup> Floor