

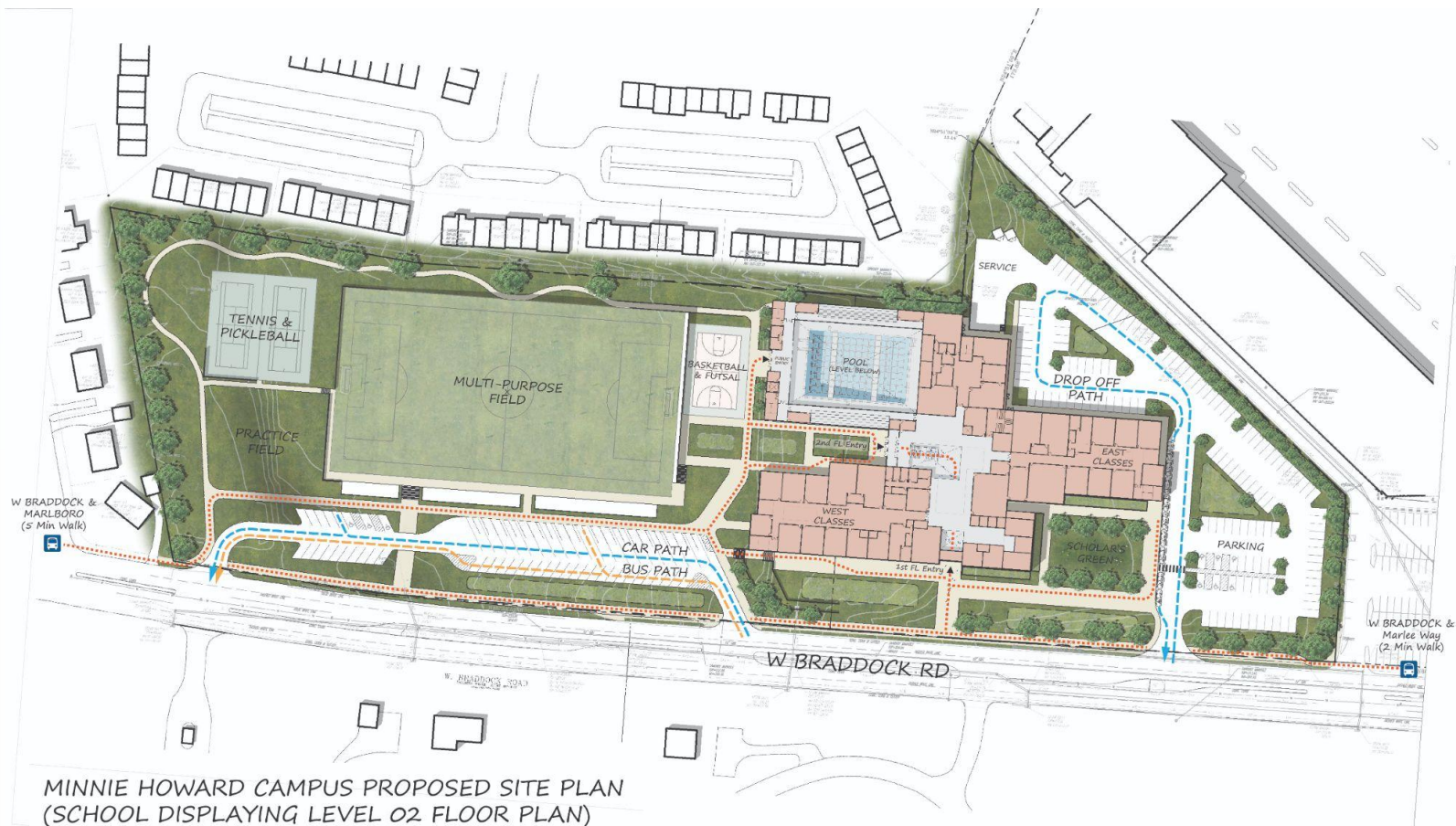
The High School Project



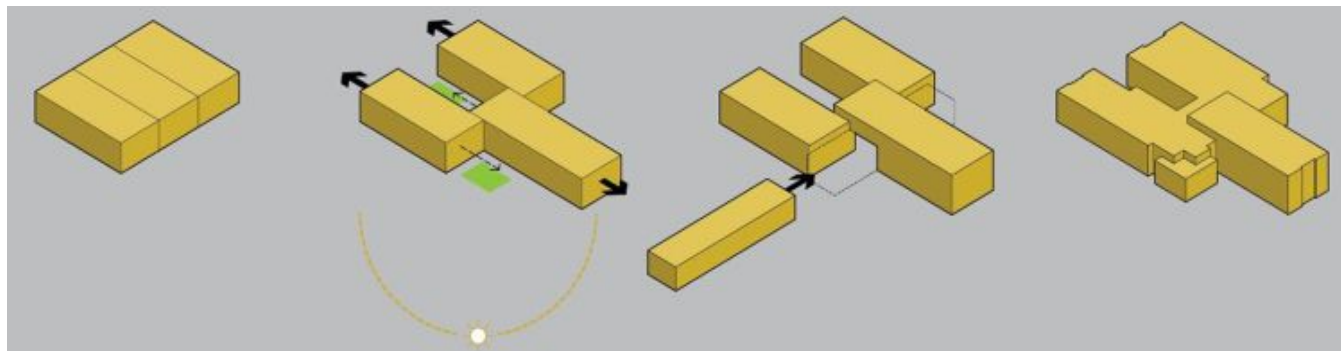
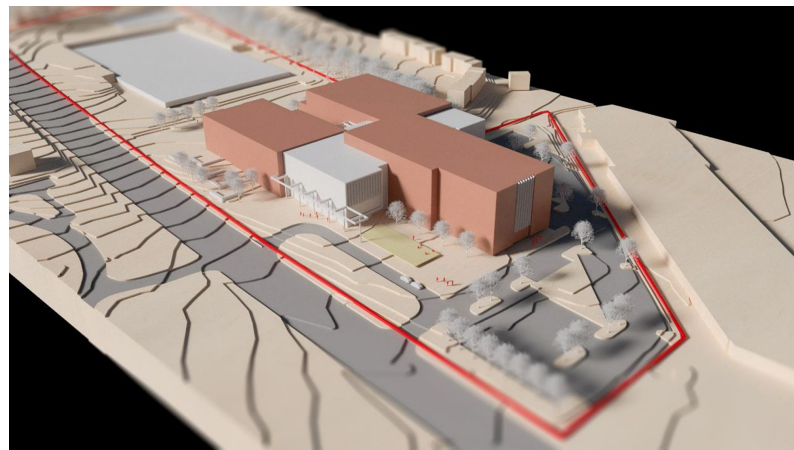
Community Meeting

May 3, 2021

Selected Concept - Pinwheel and Site Plan Option B



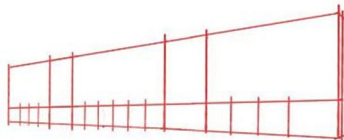
The Pinwheel Concept



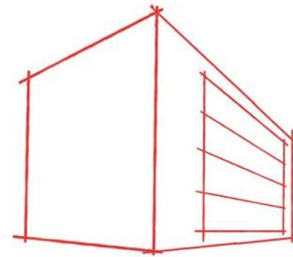
Academic Examples



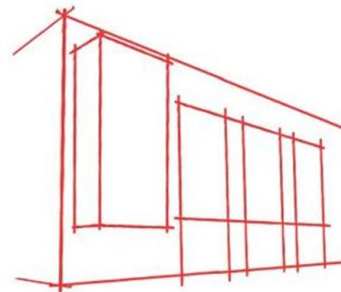
Yale University



University of California Los Angeles



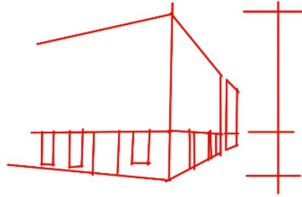
Yale University



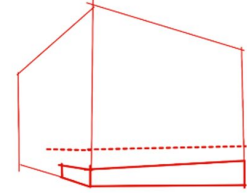
City of Alexandria Examples

2025

EQUITY FOR ALL



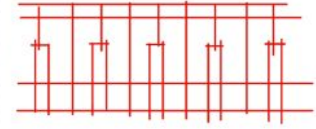
textured stone base



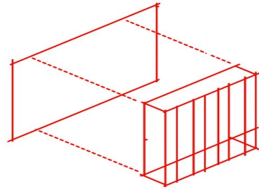
cameron + fourfax
stone base - water table



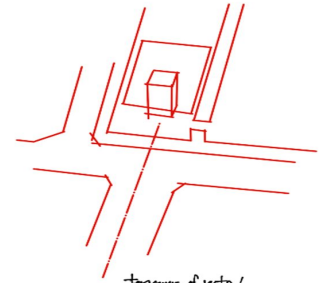
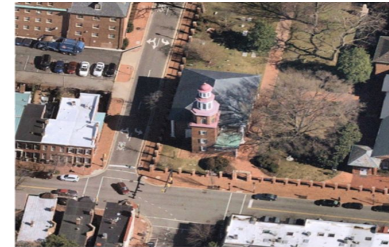
foreground/background



king street



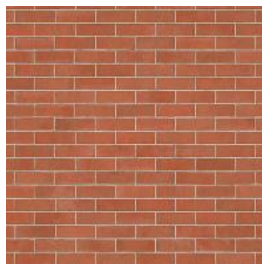
path / transition inside-outside



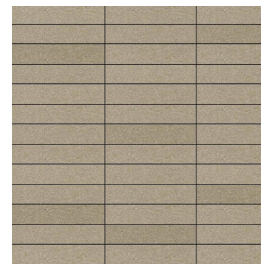
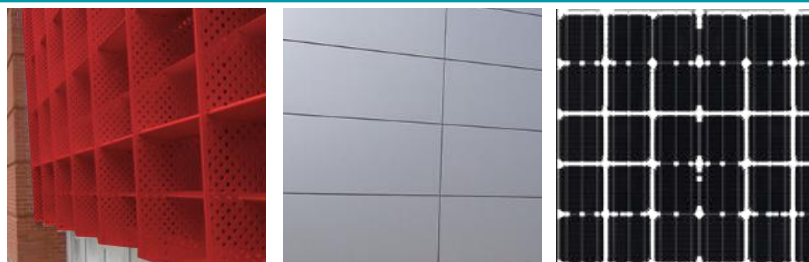
terminus of vista /
space between street +
building

Exploring Material Options

Palette A



Palette B



Polling Question

Which material options do you like the best? (Select One)

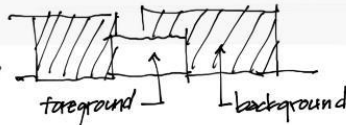
- **Palette A**
- **Palette B**
- **Both**

Civic Presence

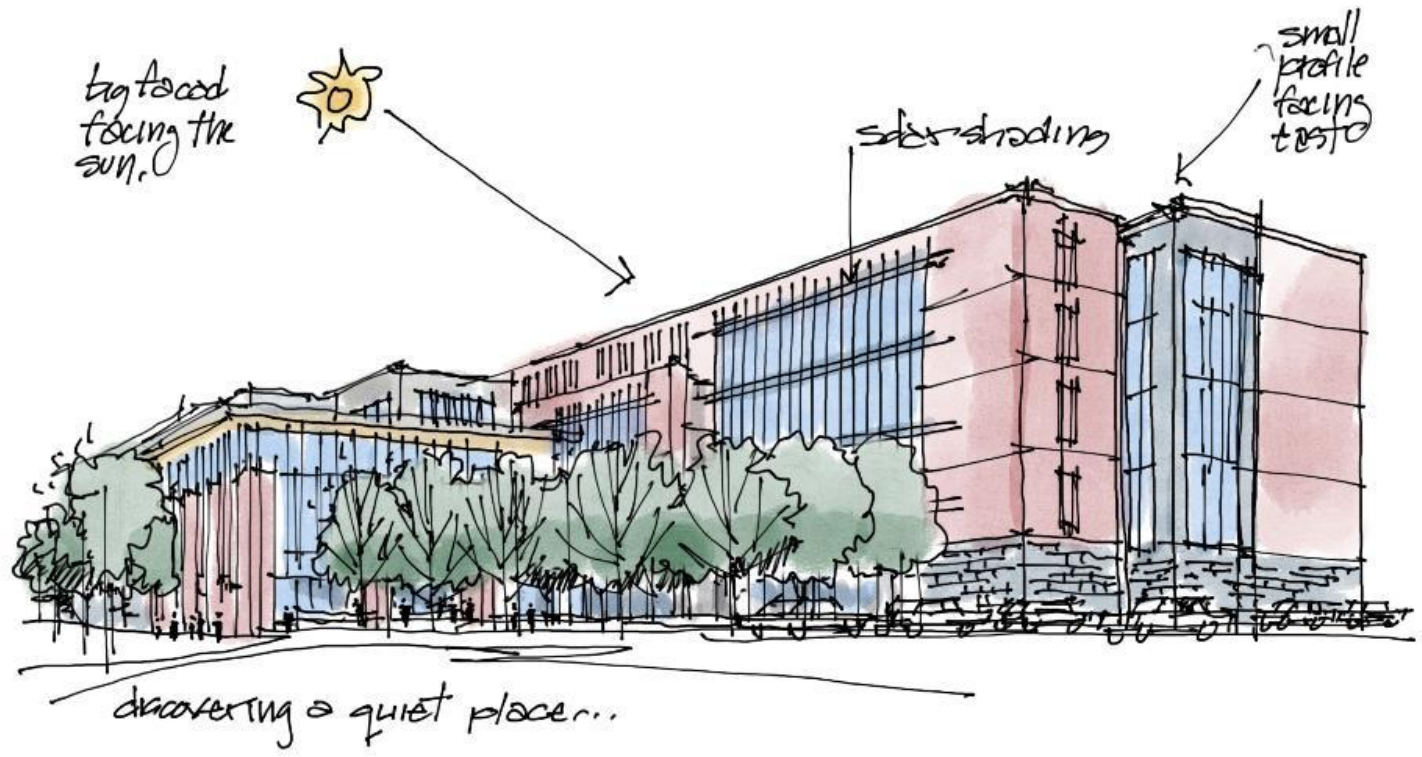
A CIVIC PRESENCE!!!



HIERARCHY OF THINGS
BACKGROUND VOLUMES
AND ELEMENTS IN FOREGROUND



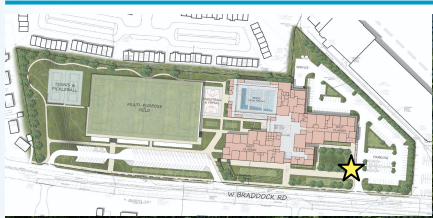
Exploring Materials Palette A



View From Braddock Road



Scholar's Green



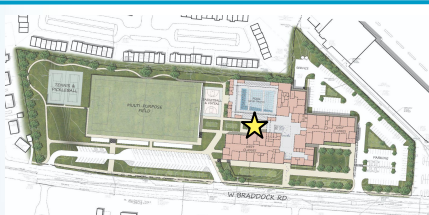
Entry Porch



View From Athletic Fields

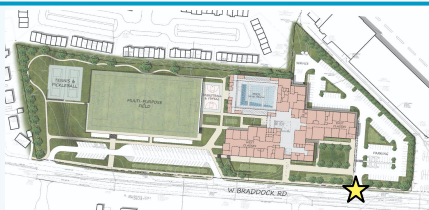


Courtyard Entrance

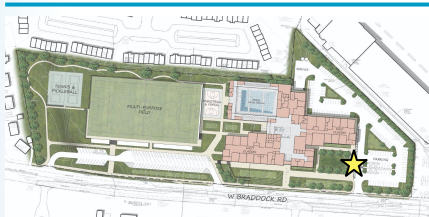


Exploring Materials Palette B

View From Braddock Road



Scholar's Green



Entry Porch

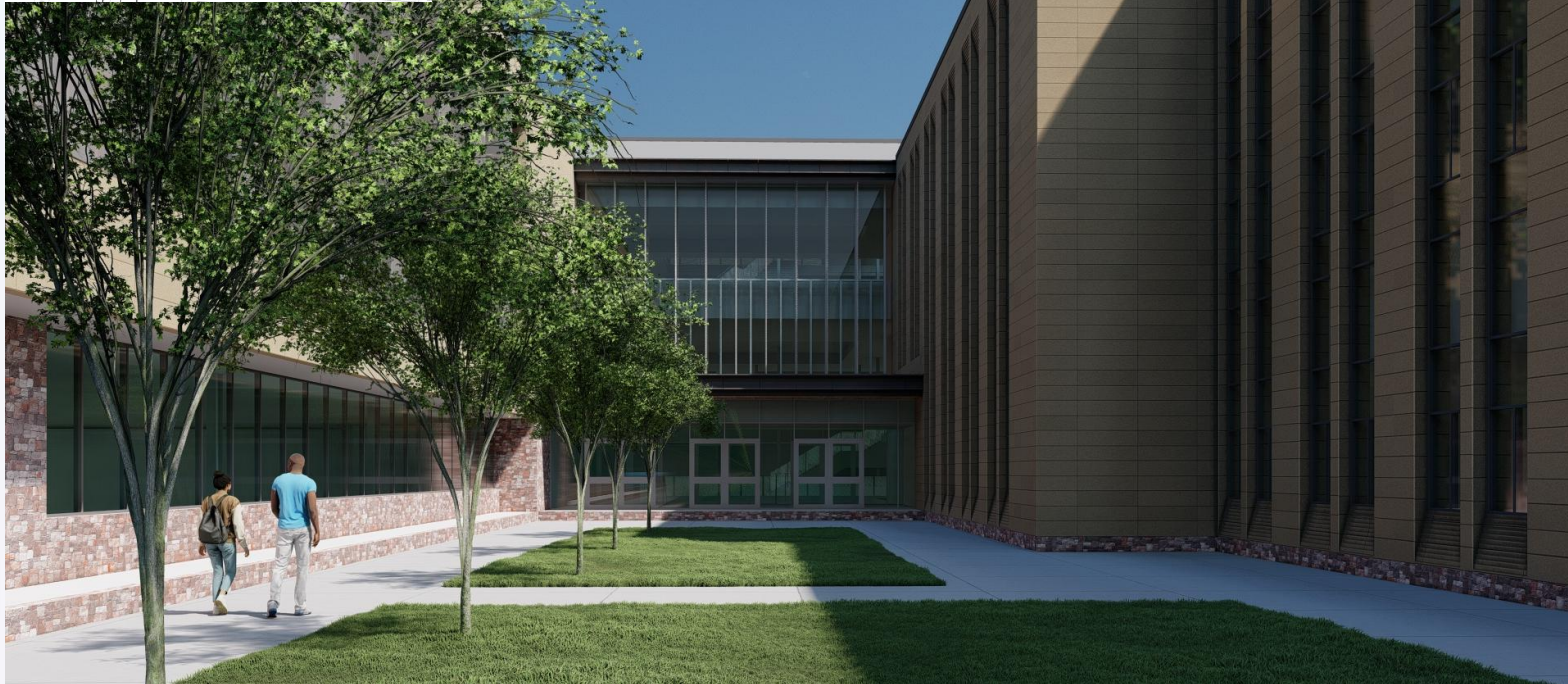
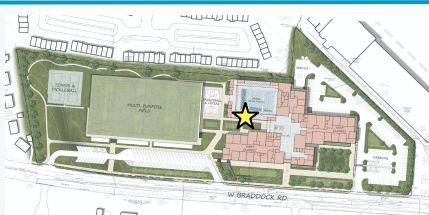


View From Athletic Fields

EQUITY FOR ALL 2025



Courtyard Entrance



Pinwheel Concept

CATEGORY	PINWHEEL
Building GSF	297,300
Open Space GSF	346,300
Total Parking Spaces	210
Dedicated Spaces	167
Shared Spaces	43

Cost Matrix

School Board Costs (Construction Budget \$150M):

ACPS PROGRAM	COST ESTIMATE
Total Construction Hard and Soft	\$149.5M

OPTIONAL PROGRAM	COST ESTIMATE
Aquatic Facility	\$15.2M
Co-located Alexandria Health Department (Teen Wellness Center), Department of Community and Human Services (DCHS) Spaces and Early Childhood Program	\$8M

NOTE: These are approximate costs based on preliminary concept designs and not inclusive of all required spaces and elements

Questions & Feedback

Superintendent's Advisory Team Meeting: May 4, 2021, from 5:30 – 6:30 p.m.

Webinar link:

<https://zoom.us/j/91542708478?pwd=WHRnWjEwSUlRTkRlMUIRdHFvTy9zUT09>

Contact us:

□ **Email:** hsproject@acps.k12.va.us

Updates:

□ **Online:** www.acps.k12.va.us/hsproject



Thank you



Superintendent
Dr. Gregory C. Hutchings, Jr.

School Board
Meagan L. Alderton, Chair
Veronica Nolan, Vice Chair

Cindy Anderson
Ramee A. Gentry
Jacinta Greene
Margaret Lorber

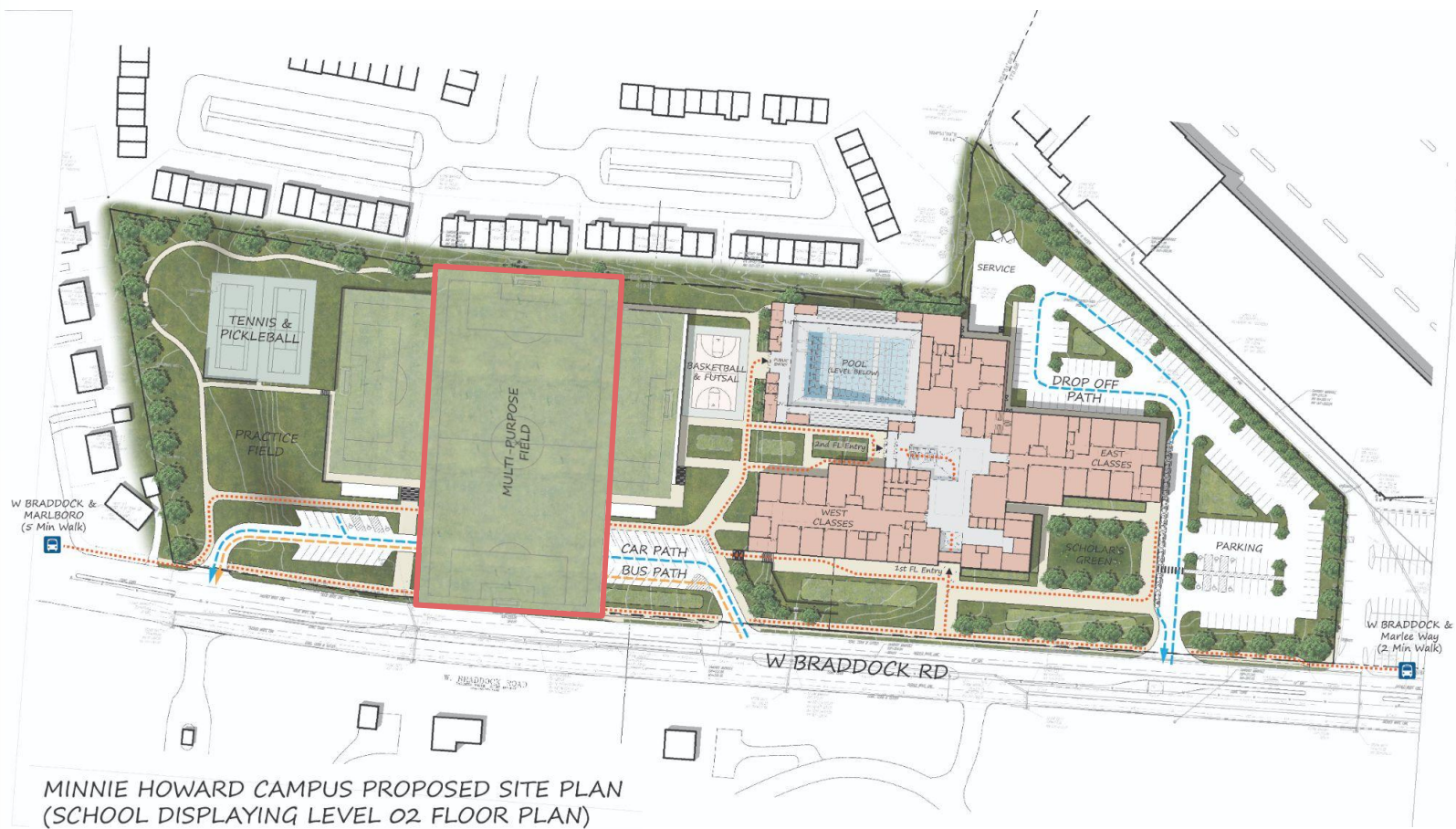
Michelle Rief
Christopher A. Suarez
Heather Thornton

Advisory Team Meetings & Topics

Date	Topics
May 4, 2021	Focused on Schematic Design Update; Site Update. including: <ul style="list-style-type: none"> • Updated Site Elevation • Building Plan Refinement
June/July	Project Update: Schematic Design, elevation, cost and construction.
August/ September	Update on the submission to be considered by Planning Commission and City Council; Updates on design, and site usage.
November/ December	Provide final information to the community prior to the Planning Commission and City Council hearings on the DSUP.
Winter 2022	Updates from Planning Commission and City Council hearings; Next steps for the project.
Early Spring 2022	Final Meeting Preparation for Construction.

** Tentative date will need to be confirmed*

Fields Rotated



MINNIE HOWARD CAMPUS PROPOSED SITE PLAN
(SCHOOL DISPLAYING LEVEL 02 FLOOR PLAN)

The Pinwheel Concept

