



# WILLIAM FLOYD SCHOOL DISTRICT

## *Federal Stimulus Update:*

*Coronavirus Response and Relief Supplemental  
Appropriations Act (CRRSA)*

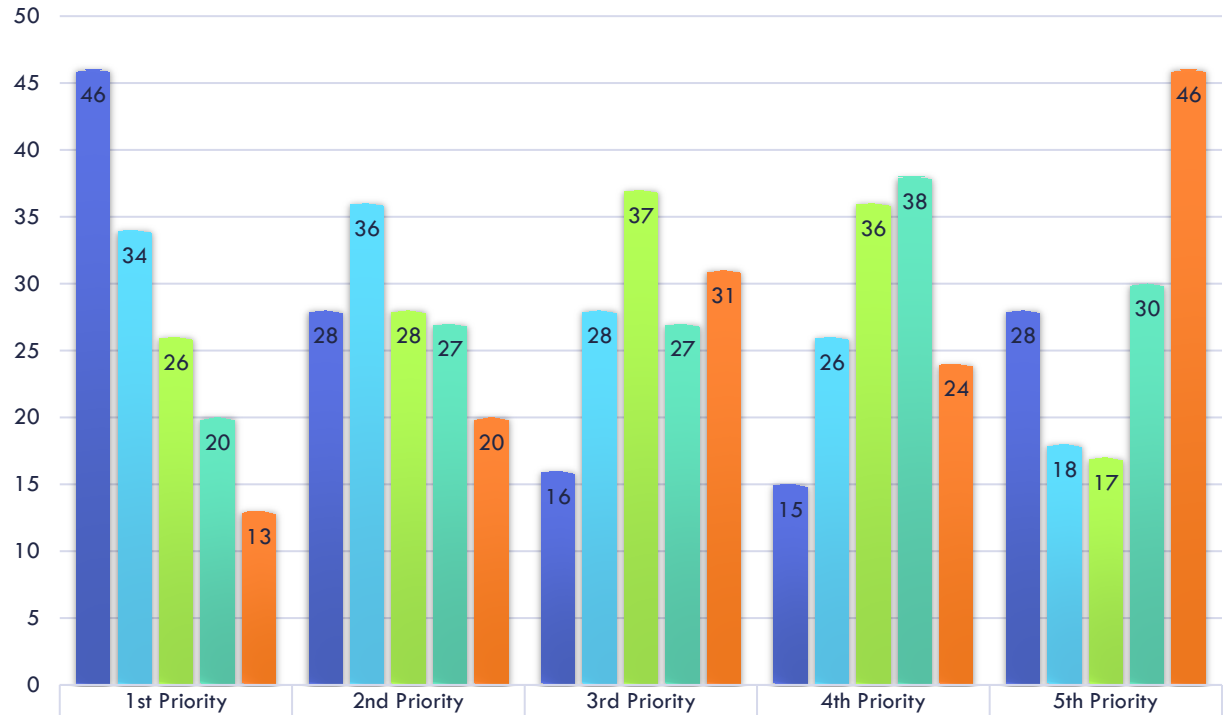
*American Rescue Plan (ARP) – Federal and State Reserve*

# Funding Overview

Stimulus Funding	Amount	Dates to Obligated Funds	Status
Coronavirus Response and Relief Supplemental Appropriations Act (CRRSA)	GEER: \$295,807	3/13/2020 - 9/30/2023	Received State Approval
Coronavirus Response and Relief Supplemental Appropriations Act (CRRSA)	ESSER: \$8,390,216	3/13/2020 - 9/30/2023	Received State Approval
American Rescue Plan - Federal Portion	ESSER: \$15,247,226	3/13/2020 - 9/30/2024	Received State Approval
American Rescue Plan - State Reserve	ESSER: \$10,000,000	3/13/2020 - 9/30/2024	Received State Approval
American Rescue Plan - Homeless	ESSER: \$109,396	3/13/2020 - 9/30/2024	Received State Approval
American Rescue Plan - IDEA 611	ESSER: \$488,391	3/13/2020 - 9/30/2024	Received State Approval
American Rescue Plan - IDEA 619	ESSER: \$54,388	3/13/2020 - 9/30/2024	Received State Approval
<b>Total Allocation:</b>	<b>\$34,585,424</b>		



# Results of Public Survey



	1st Priority	2nd Priority	3rd Priority	4th Priority	5th Priority
Providing curriculum that is engaging and aligned with New York State Learning Standards	46	28	16	15	28
Providing academic support that supplements in class instruction	34	36	28	26	18
Providing mental health supports	26	28	37	36	17
Supporting social emotional learning	20	27	27	38	30
Providing extra curricular programs	13	20	31	24	46



# District's CRRSA Plan – Initial Plan – 2020-22

---

- ***Purchasing of PPE supplies in order to provide a safe environment for students and staff - COMPLETED***
  - Examples: Shields, masks, MERV-13 filters, cleaning supplies for all buildings
- ***Addressing Social and Emotional Needs of Students – MOVING TO GENERAL FUND FOR 2022/23***
  - (1) additional social worker per building
  - (4) additional psychologists (HS, Paca, WFMS, WFLC, and (1) shared psychologist for elementary buildings)
  - (2) Additional school counselors – one at each middle school
- ***Addressing Learning Loss – REMAINING UNDER CRRSA FOR 2022/23***
  - (1) Special Education teacher – WFLC
  - (1) Reading Teacher (Paca)
  - (4) Teachers to teach accelerated core classes at high school – help students meet graduation requirements
  - Purchase of new ELA Curriculum for elementary and new science workbooks for middle schools
- ***Summer School (Partially Funded with CRRSA) - REMAINING UNDER CRRSA FOR 2022/23***
  - Transportation and supplies for Expanded Summer School – all grade levels
  - Summer Curriculum - Elementary



# District's CRRSA Plan – Additions 2022/23

---

- ***Provide a safe environment for students***
  - Playgrounds at (3) elementary buildings
  - (3) Deans – (1) at William Floyd Elementary, Moriches Elem and Woodhull Elementary (other two buildings deans funded by Title grant)
- ***Addressing Learning Loss and Enrichment –***
  - Addition of STEM Labs in each of the elementary school buildings
  - Partnership Plus - Provide professional development to teachers for new My View curriculum and training for parents on how to navigate through the online curriculum



# District's ARP Initial Funding Plan

---

## Academic Learning Loss

- Summer School for elementary, middle and high school students (Summer 2021-2024)
- Teachers for English language learners who need additional support due to the effects of remote learning
- Elementary schools will utilize an extra period in order to provide academic intervention services for those students determined to have learning loss
- Teachers to provide remote learning exclusively to elementary children out on quarantine – **REMOVED 2022/23**

## Academic & Enrichment

- Add'l teaching assistants at WFLC – help students with moderate to severe social-emotional issues and management needs
- Advanced STEM (Science, Technology, Engineering, Arts & Mathematics) labs in the elementary schools to provide opportunities for enrichment and innovation **SPLIT B/T CRRSA AND ARP**
- Purchase of musical instruments to replace those no longer in working condition
- Additional professional development for teachers using Canvas

❖ *District will continue to refine and build programs that target students in need*



# District's ARP Initial Funding Plan Cont'd...

---

## Mental Health

- Provide additional staff to support social and emotional issues caused by the effects of the pandemic. These positions include:
  - ❑ social workers
  - ❑ psychologists and school counselors in various buildings to help with social and emotional issues

***\*\*These expenses are being moved to the General Fund in order to continue services beyond the grant***

## Health & Safety

- Continue to sanitize and clean all buildings
- Continue with MERV-13 filters, as per CDC recommendations
- Continue to purchase PPE products for students and staff
- Using funds to meet NYS mandates – Weekly testing for unvaccinated employees
- Structures and supplies that promote social distancing (ie, addition of student desks and tables)

❖ ***District will continue to refine and build programs that target students in need***



# District's APR Plan – Additions 2022/23

---

- ***Additions to Address Learning Loss and Enrichment –***
  - STEM Lab Teachers at Elementary Level
  - Addition of Summer Music Enrichment Program
  - Additional of IXL ELA Curriculum at Secondary Level
  - Additional instructional coaches at Secondary Level
  - Additional Deans at Secondary Level
  - Additional Credit Recovery Periods at Secondary level





# District's ARP – State Reserve Plan

---

## Academic Learning Loss

- Additional teachers to teach accelerated core classes at high school – help meet graduation requirements
- Increase bilingual teachers for secondary and elementary - **MOVED TO GENERAL FUND**
- Add bilingual speech teachers - **MOVED TO GENERAL FUND**
- Teachers for English Language Learners who need additional support due to the effects of remote learning
- Special Education teacher at WFLC - This specialized position will work exclusively on English Language Arts with intensive individualized support
- Curriculum, transportation and supplies to continue summer school for all students through Summer 2024

## Summer Learning & Enrichment

- Enrichment and Academic Programs for K-12 - Partner with SCOPE – Saturdays and school breaks
  - STEAM Classes
  - Arts and Theater
  - ELA/Math Support
  - Coding & Technology
  - SAT Prep
  - Enrichment Programs
- Summer School Enrichment Program – STEAM, ELA, Math, social/emotional learning

## After-School

- Additional clubs for all elementary and secondary schools to provide academic and enrichment opportunities for students

❖ *District will continue to refine and build programs that target students in need*



# District's APR State Reserve Plan – Additions 2022/23

---

- ***Additions to Address Learning Loss and Enrichment –***
  - Build on SCOPE services to support
  - Purchase additional Chromebooks for elementary and secondary
  - Add additional clubs to support learning loss



# Additional Grants – ARP IDEA & HOMELESS

---

## ***ARP – IDEA 611/619***

- Portion of funds must go to approved Special Education providers that provide educational or related services
- Professional development for school psychologists
- Additional Life Skills supplies
- iPads to help support Special Education students

## ***ARP – Homeless II***

- Provide school supplies, personal care items, hygiene kits, etc. for students in need
- Taxi services for students/parents who need to attend evaluations

❖ ***Both grants were recently approved with NYSED***



# What's Next...

---

- *District will continue to seek feedback, review data and refine grants as needed in order to build programs that work for our students*
- *Continue to update the Board of Education, community members and all staff with regards to changes that occur within these grants*
- *All grant information will be posted to the WFSD website*



# Questions

---

- Any questions, comments and suggestions regarding the District's stimulus funding plans can be emailed to:
  - [ESSER@wfsd.k12.ny.us](mailto:ESSER@wfsd.k12.ny.us)



# Additional Information

---

- Please see additional slides for information on what is allowable through Stimulus funds



# Requirements for American Rescue Plan (ARP)

2021-22 Enacted State Budget Allocations						
90% WFSB ARP-ESSER ALLOCATION (REVISED)	20% REQUIRED LEA RESERVE FOR LEARNING LOSS (REVISED)	STATE-LEVEL RESERVE TOTAL GRANTS	1% STATE-LEVEL RESERVE SUMMER ENRICHMENT GRANT	1% STATE-LEVEL RESERVE COMPREHENSIVE AFTER SCHOOL GRANT	5% STATE-LEVEL RESERVE FOR LEARNING LOSS	WFSB TOTAL ARP-ESSER ALLOCATIONS
\$15,236,206	\$3,047,241	\$10,000,000	\$1,428,600	\$1,428,600	\$7,142,800	\$25,236,206

## **ARP Requirements:**

- 20% of funds must address learning loss through the implementation of evidence-based interventions, such as summer learning or summer enrichment, extended day, comprehensive afterschool programs, or extended school year programs

## **ARP State Reserve Requirements:**

- 1% implementation of evidence-based summer enrichment programs
- 1% implementation of evidence-based comprehensive afterschool programs
- 5% reserved for learning loss

***LEA will prioritize spending on non-recurring expenses – any programs continuing beyond availability of federal funds must identify local funds that will be used to maintain program in order to minimize disruption to core academics.***



# Allowable Expenses for ARP/ARP State Reserve

---

- Activities to address the unique needs of **low-income students**, children with **disabilities**, **English language learners**, **racial and ethnic minorities**, students experiencing **homelessness**, and **foster care youth**
- Implementing activities related to **summer learning** and supplemental **afterschool programs**
- Address the academic impact of lost instructional time through **evidence-based interventions**
- Address **social, emotional and mental health needs**
- **Reopen schools** – safe in-person learning based on CDC guidance
- School facility **improvements**





# Allowable Expenses for CRRSA

---

- Activities to address the unique needs of **low-income** students, children with **disabilities**, **English language learners**, **racial and ethnic minorities**, students experiencing **homelessness**, and **foster care youth**
- Providing **social/emotional** support to students
- Planning and implementing activities related to **summer learning** and supplemental **afterschool programs**, including providing classroom instruction or online learning during the summer months
- Addressing **learning loss** among students, including low-income students, children with disabilities, English learners, racial and ethnic minorities, students experiencing homelessness, and children in foster care who attend LEA
- Purchasing **supplies to sanitize and clean** the facilities
- Inspection, testing, maintenance, repair, replacement, and upgrade projects to improve the **indoor air quality** in school facilities
- Developing strategies and implementing public health protocols to **reopen school safely** for all students and staff
- School facility **improvements**

