



**FUTURE
READY
D36**

Honoring our past.
Planning our future.

Educational Master Facility Plan - Board Update

September 19, 2017



**FUTURE
READY
D36**

Honoring our past.
Planning our future.

Process Update

Process Stakeholders – Core Team



Recommendations/Outcomes

District Administrators
Teachers
Community Members
Local Business or Industry Partners
Union Leader
A Board Member
Facilities Leader
+ Ad Hoc Members

- ✓ **Applications Available!**
- ✓ **Core Team selection after September 20th**
- ✓ **First meeting October 5th**



**FUTURE
READY
D36**

Honoring our past.
Planning our future.

1

Deeper Understanding

2

Discover/Explore

3

Program

4

Conceptualize

5

Game Plan

2017



2017



2018



*This process is designed to coincide with the conclusion of the 2017 - 2018 school year. However, it is important to arrive at a consensus plan that addresses the needs of the District and its stakeholders. With that in mind, the conclusion of the process may deviate from the anticipated adoption.

Calendar V1 - July 14, 2017



July 2017 – June 2018*



Phase 1 – Deeper Understanding

Key Activities: Complete!

- ✓ Facility Assessments
- ✓ Listening Tours
- ✓ A Day in the Life: Part 1
- ✓ Student Ideation

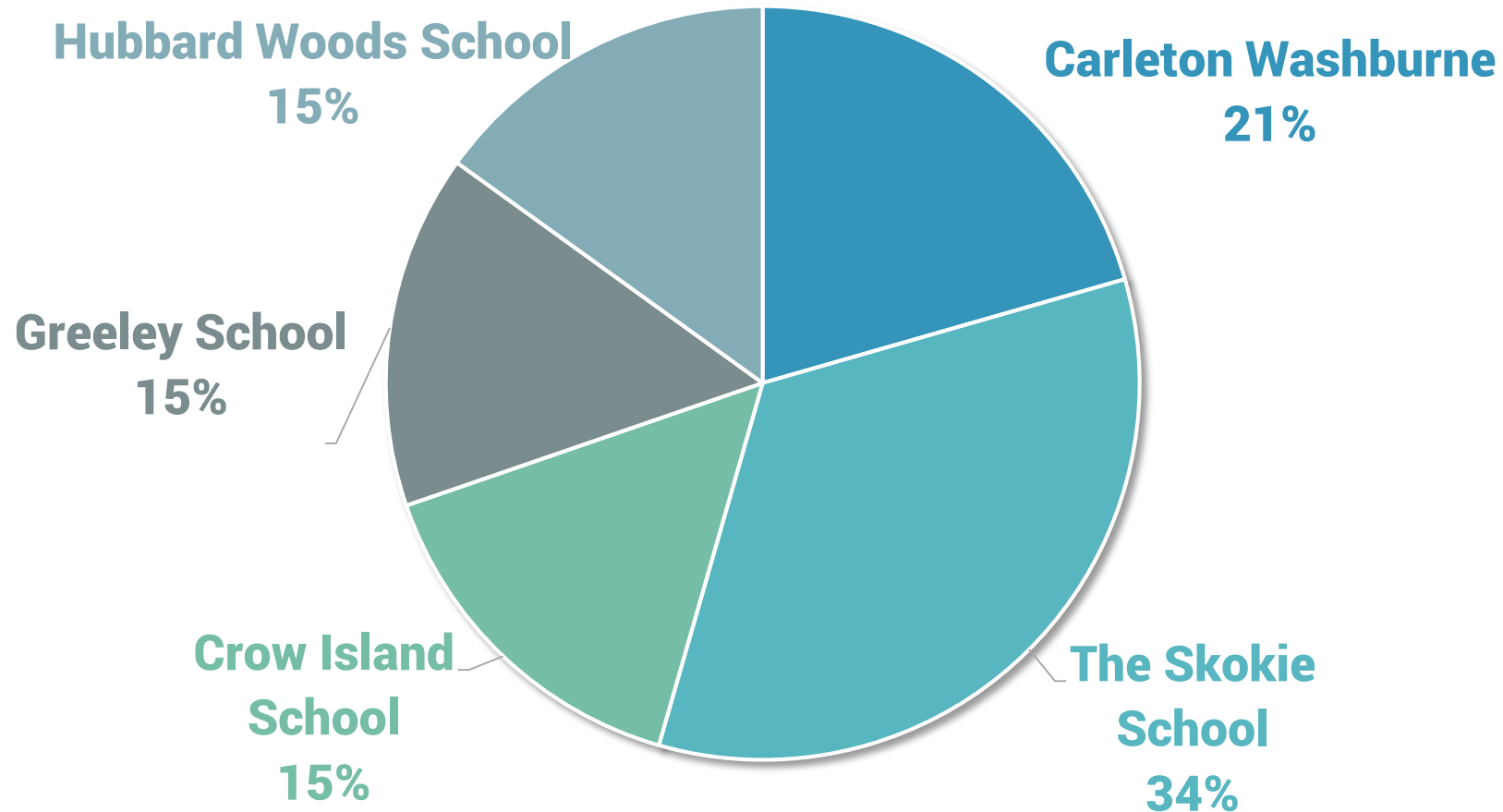
Key Activities: Ongoing

- Review Existing Data
- Activity Logs
- Indoor Environmental Quality Surveys
- Qualifying “change”
- Sustainability | UX



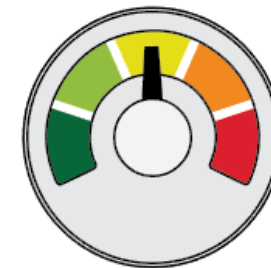
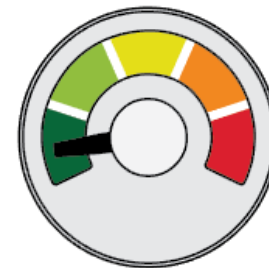
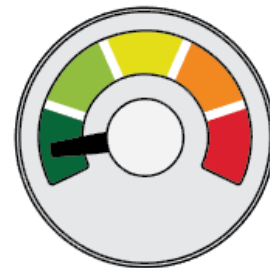
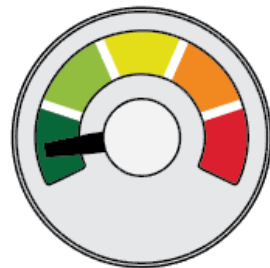
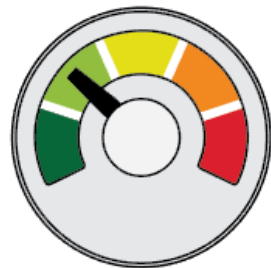
Phase 1 – Facility Assessment

DLR Group cataloged 1,343 items including the recent Decennial HLS Survey items previously identified.



Phase 1 – Facility Assessment

	Schools				
	Carleton Washburne	Crow Island	Hubbard Woods	Greeley School	Skokie School
Accessibility	27	25	16	15	31
Electrical	3	5	12	3	12
Equipment	25	37	26	15	40
Exterior	28	29	31	21	61
Finishes	100	63	82	61	210
Mechanical	16	8	12	12	8
Plumbing	2	9	4	5	9
Site	5	5	13	7	9
Health Life Safety	67	22	15	60	70
TOTAL	273	203	211	199	450



Carleton Washburne

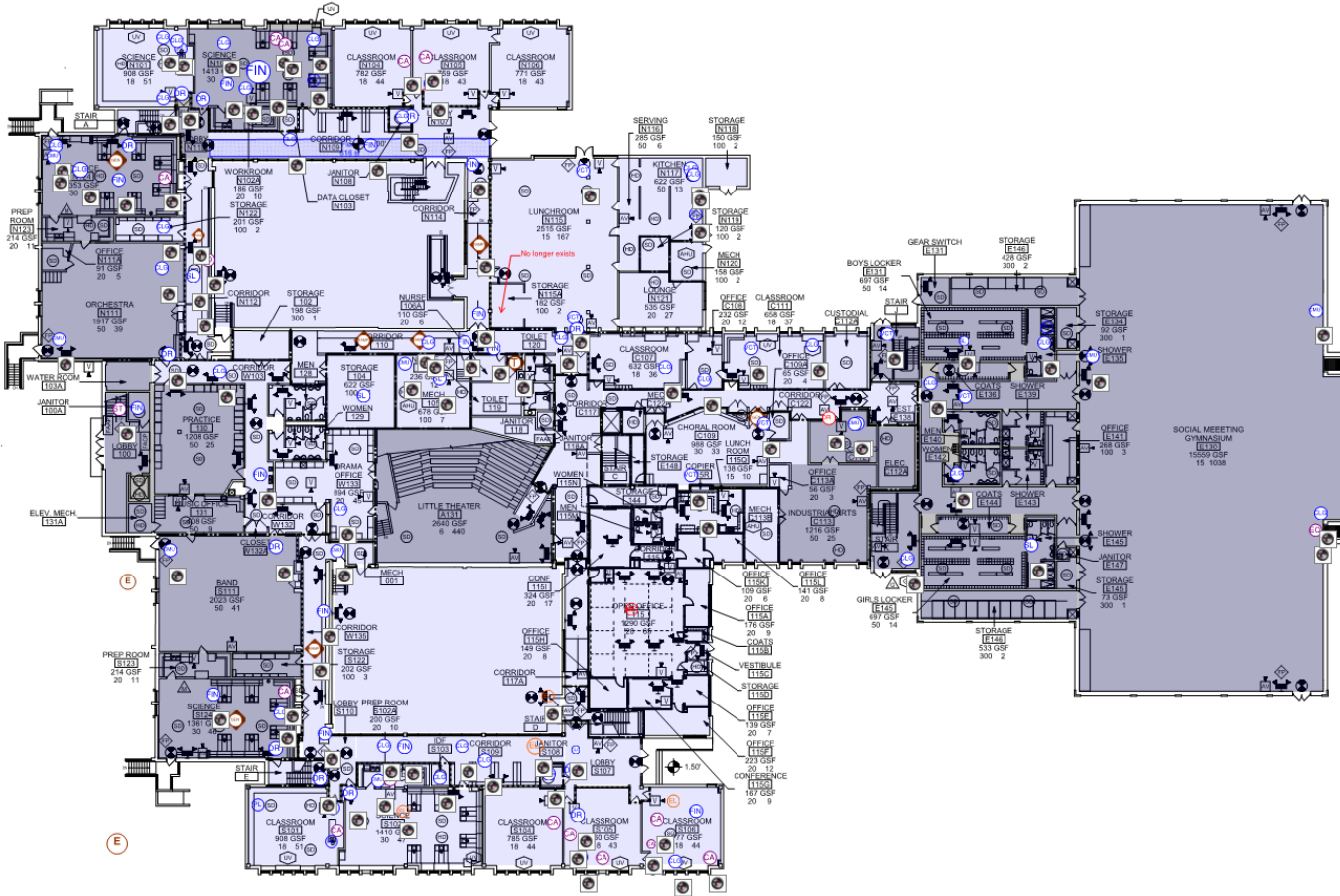
Quick Facts:

273 items found

- 67 remaining Health Life Safety
- 27 related to Accessibility
- 21 related to Mechanical, Electrical and Plumbing

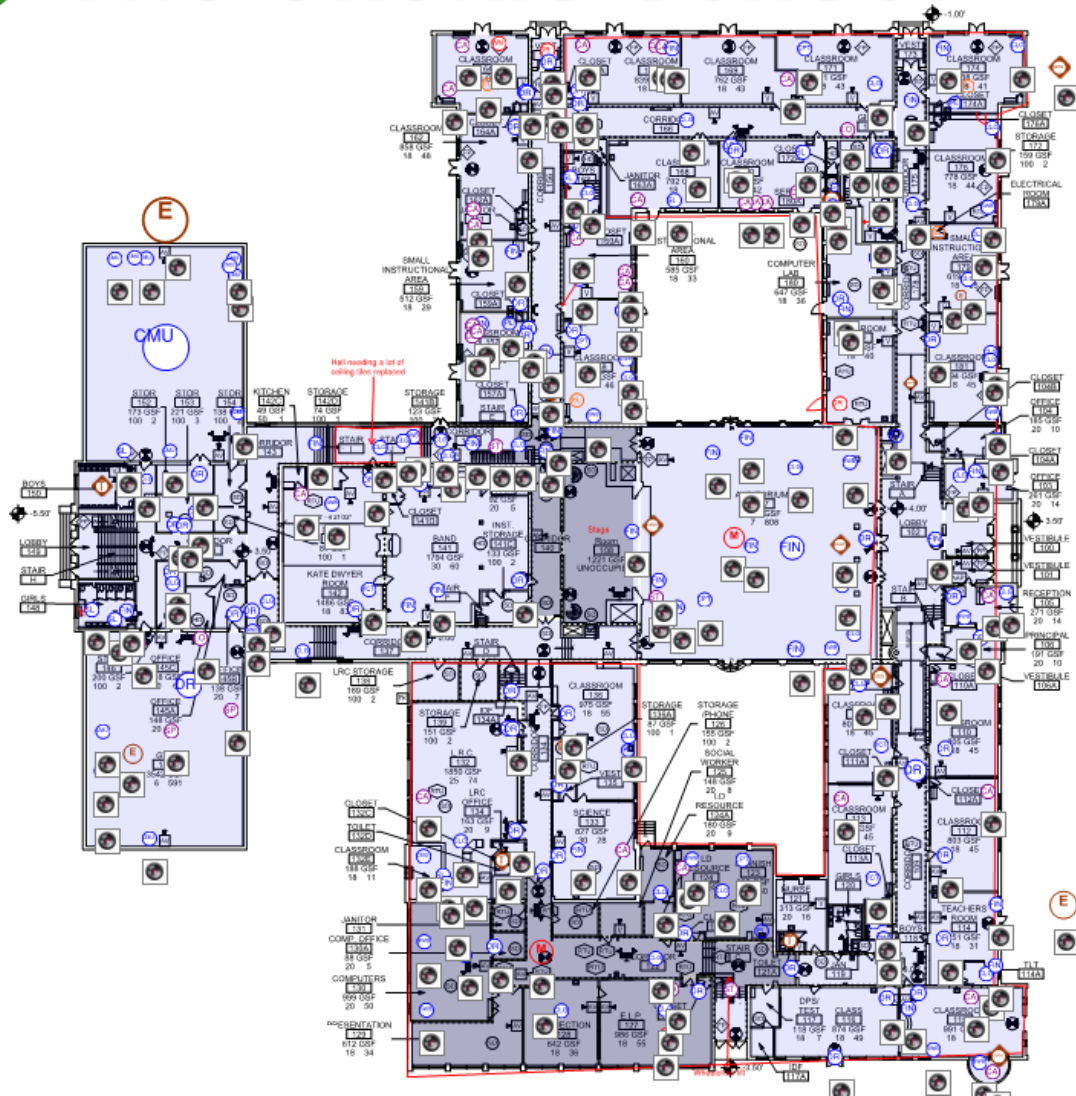
Items to explore:

Cracks in CMU (Orchestra / Band)
Possible Settlement – north hall
Accessibility improvements
Cause of water damaged tiles





The Skokie School



Quick Facts:

450 items found

- 70 remaining Health Life Safety
- 31 related to Accessibility
- 29 related to Mechanical, Electrical and Plumbing

Items to explore:

Masonry / CMU cracking at Gym
Slab cracking at auditorium
Accessibility improvements
Cause of water damaged tiles

Crow Island

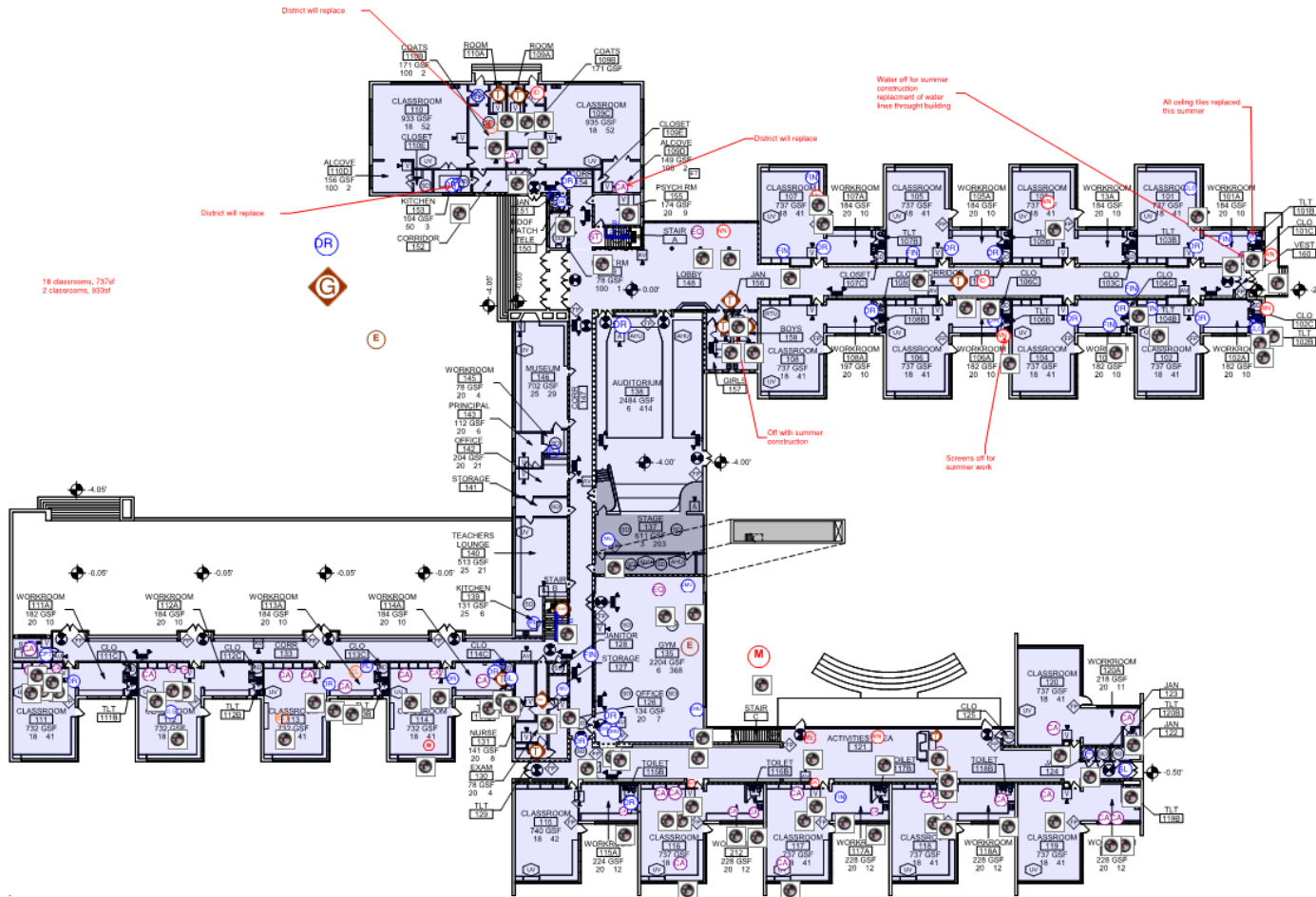
Quick Facts:

203 items found

- 22 remaining Health Life Safety
- 25 related to Accessibility
- 22 related to Mechanical, Electrical and Plumbing

Items to explore:

Egress from music room
Accessibility Improvements





Greeley School

Quick Facts:

199 items found

- 60 remaining Health Life Safety
- 15 related to Accessibility
- 20 related to Mechanical, Electrical and Plumbing

Items to explore:

Egress from Gym

Missing exhaust from Rm 133

Cause of water damaged tiles





Hubbard Woods

Quick Facts:

211 items found

- 15 remaining Health Life Safety
- 16 related to Accessibility
- 28 related to Mechanical, Electrical and Plumbing

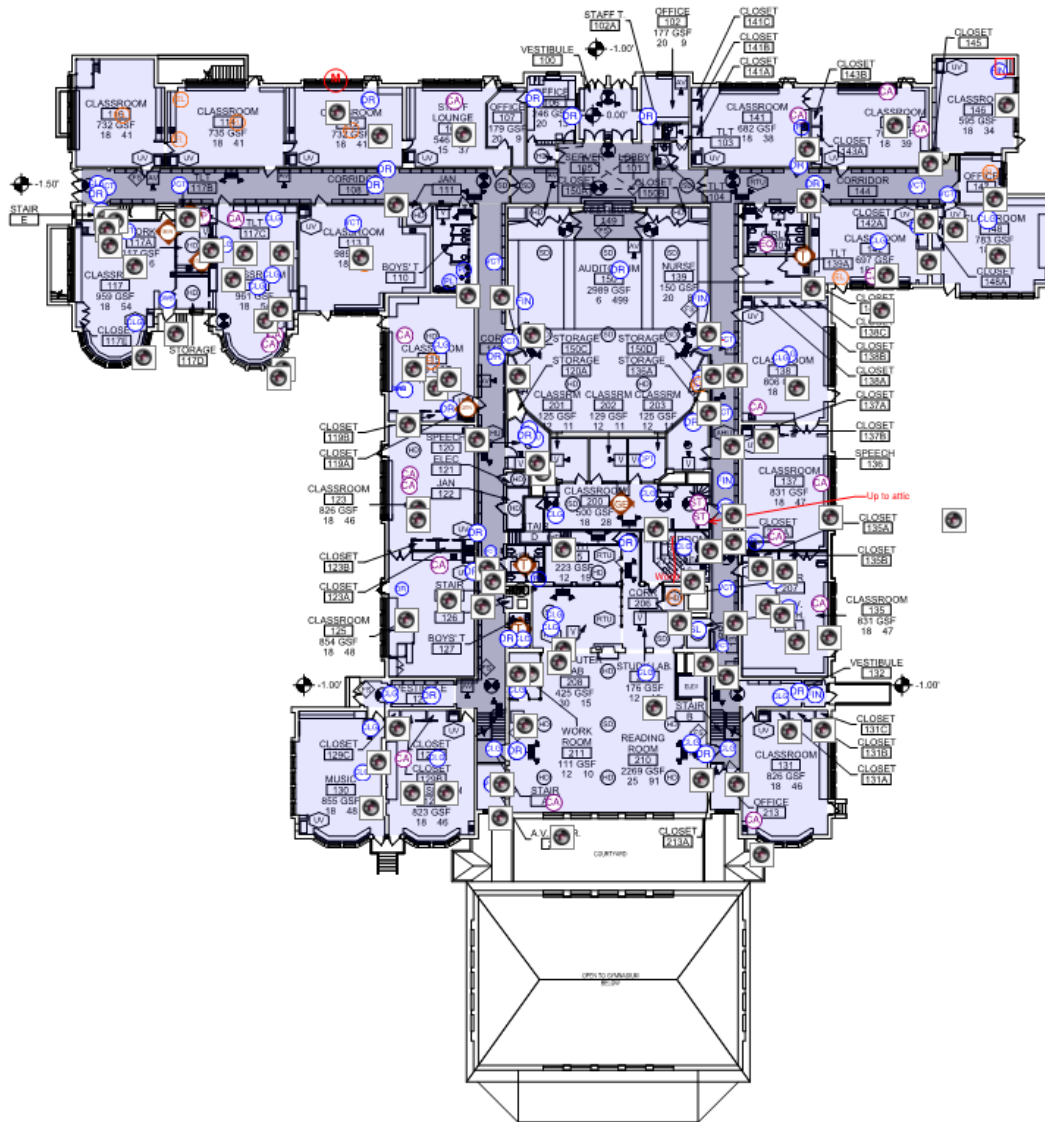
Items to explore:

Vertical crack in masonry

Loose / missing roofing

Exhaust at boiler room

Cause of water damaged tiles



A Day in the Life: Student Shadowing

Awareness Session: A Day in the Life of a Student

Date Observed: 9/11/17

Course Attributes:

Building: Greeley Elementary School

Name: 3rd Grade

Teacher: Melissa Cook

Room #: 226

Room SF: 20X34 - 680SF

Class Activities:	% of Time:
1. direct instruction	25
2. group discussion	40
3. small group work	5
4. individual work	25
5. one on one	5

Notes and Sketches

20 students in the class, classes began this year 8/28
 8:37 - individual work, self portrait
 8:50 - morning group meeting on carpet (library)
 9:00 - students move to resource center (library)
 - used by second grade and up
 - 5 students pulled out for sped at first half of session
 - review of space use with students at carpet
 - library day is one day a week
 9:23 - use i-pads to search for books
 9:40 - students move to computer lab
 - gaming to help typing skills (typing club)
 - each is progressing at their own pace
 - furniture is on wheels allowing space to quickly adapt and change modes
 - furniture is on wheels allowing space to quickly adapt and change modes
 10:00 - move to computer lab / maker space
 10:10 - class moves to KW (space is shared with multiple recess classes causing confusion of space and access to resources)
 - class starts with running laps
 - confers with 4 square
 10:27 - snack time on classroom carpet and video on math
 - discussion on encouraging mindset to learn math
 - prep for tomorrow's MAP test
 10:43 - group math problems on carpet
 - discussion of problem solving strategies
 11:10 - lunch hour
 12:10 - spelling
 12:30 - spelling workbook done as a group
 12:40 - Music (room is 22x32)
 - meet at music room carpet
 - group singing and discussion of music culture
 12:50 - connection of movement with music as a group and in pairs (music room is smaller than last year)
 1:00 - drumming as a group
 1:12 - piano sing along
 1:20 - science
 - start with reading at the carpet
 - whole class discussion on plants / reproduction / food chain
 1:30 - science video
 1:45 - science journals, individual work
 1:50 - recess
 2:15 - reading (readers workshop)
 - carpet meeting to review reading assignments
 2:23 - solo reading anywhere in the room
 - 3 kids pulled out
 2:45 - dismissal

Classroom issues:
 - technology connection is in the back of the room, screen is at the front, teacher has to run from front to back all day
 - mass of wires in the back of the room
 - this area of the building has no AC
 - door hardware is difficult to operate
 - larger classrooms on the first floor
 - inconsistent classroom size
 - carpet area is cramped
 - limited space for storage
 - need greater space at carpet
 - space needs and tech coordination is the biggest problem
 - need flexible furniture
 - are fixed desks needed
 - more efficient storage
 - better HVAC
 - small class is preferred over a larger room

Classroom opportunities:
 - two standing desks for flexible use
 - several but limited seating options
 - adjacent to other 3rd grade classrooms
 - classroom dog

Music room issues:
 - no carpet
 - heavy windows that are tough to open
 - kids need better access to instruments
 - last room had multiple instruction areas
 - have to use multiple storage rooms throughout the building

Notes and Sketches



Awareness Session: A Day in the Life of a Student

Date Observed: September 11, 2017

down the hall from room with chairs and small IKEA chairs students have little room to well focusing on individual/ dress-up, blocks, ng area, coloring table, desk/area; keep items teachers float around

- Furniture items include IKEA storage shelves/c IEQ
 - Room temperature is comfortable throughout the day (68 deg as high)
 - Room is adjacent to outdoor play area (with windows open)
 - lunch/recess is divided in half between 4
 - minimal power outlets available for use
 - sunny day; overhead lights not used at all day





**FUTURE
READY
D36**

Honoring our past.
Planning our future.

Schedule / Next Steps

Phase 1 Community Presentations

September 25 – October 3

Tentative Agenda for Each Campus:

- **Future Ready D36 Process Overview**
- **Audience Polling**
- **Campus History**
- **Campus Metrics**
- **Physical Condition**
- **Indoor Environmental Quality (IEQ)**
- **2017 Day in the Life Summary Findings**
- **Activity: Three Bold Ideas**
- **“Live” FAQs**

Phase 2 Preview: Global Perspectives



October 24th



**FUTURE
READY
D36**

Honoring our past.
Planning our future.

Questions?