



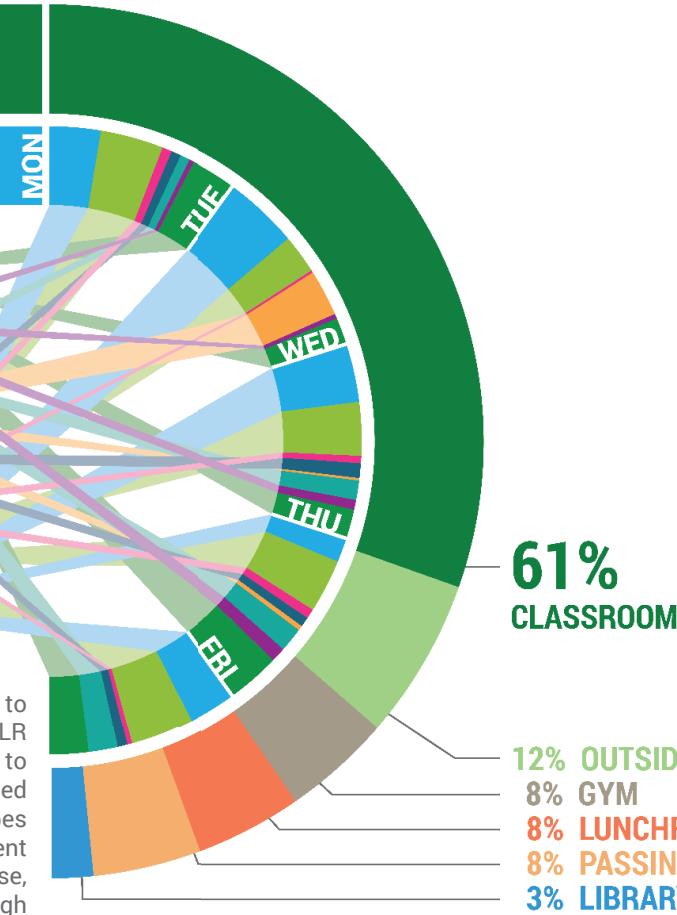
THE SKOKIE SCHOOL



The Skokie School was built in 1921 with additions in 1928, 1953, and 1962 on a 6.5 acre site. The school's gross square footage is 106,837 square feet, with an optimal capacity of 414 students.

PERCENTAGE OF TIME SPENT AT A LOCATION IN A MODALITY

- 20% FACILITATED
- 4% LECTURE
- 9% PRESENTATION
- 6% LARGE GROUP
- 5% SMALL GROUP
- 4% PAIRS
- 28% INDEPENDENT
- 27% TECHNOLOGY



TOP 5 TAKE-AWAYS

LISTENING TOUR

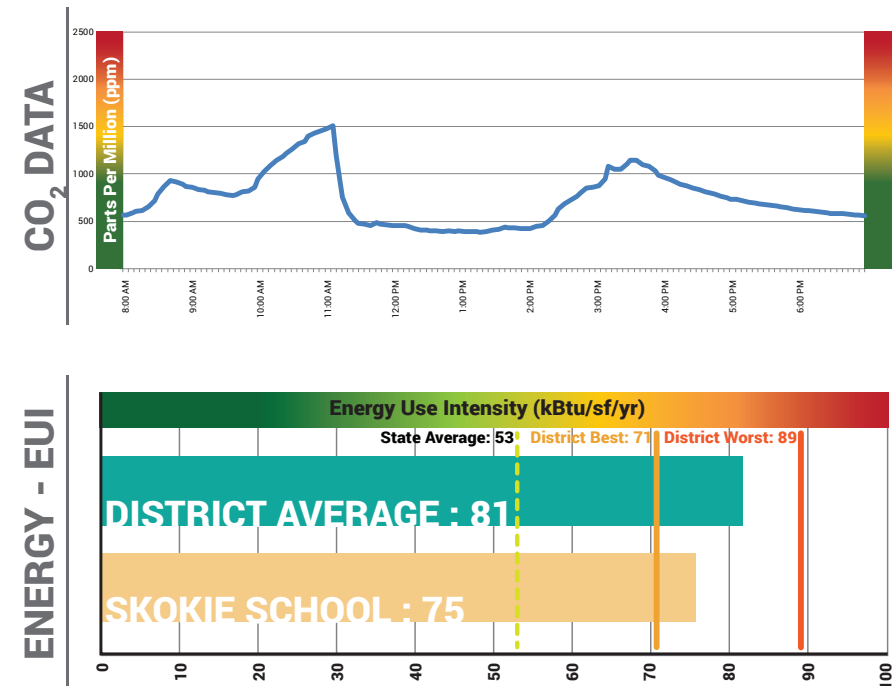
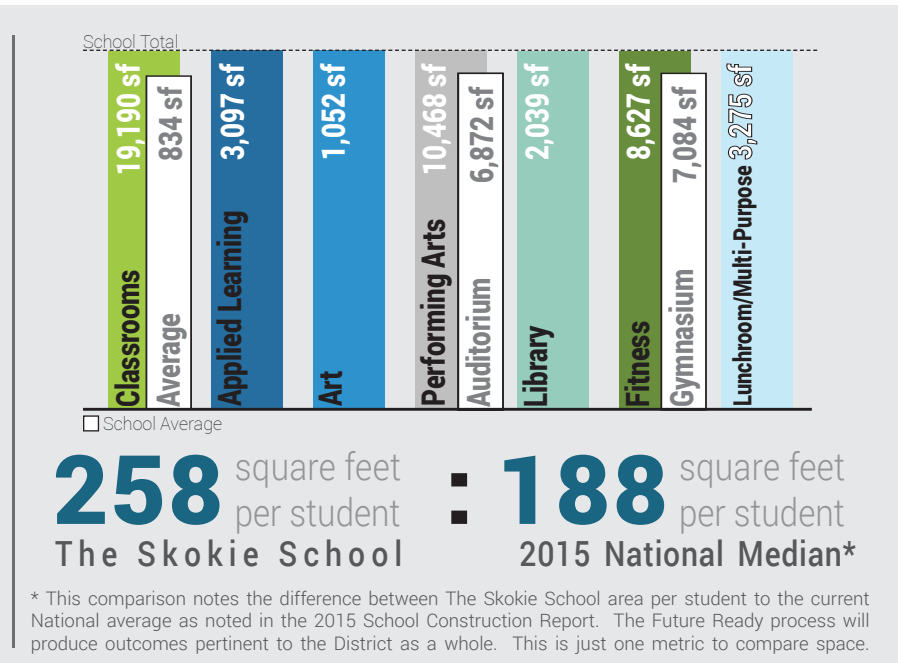
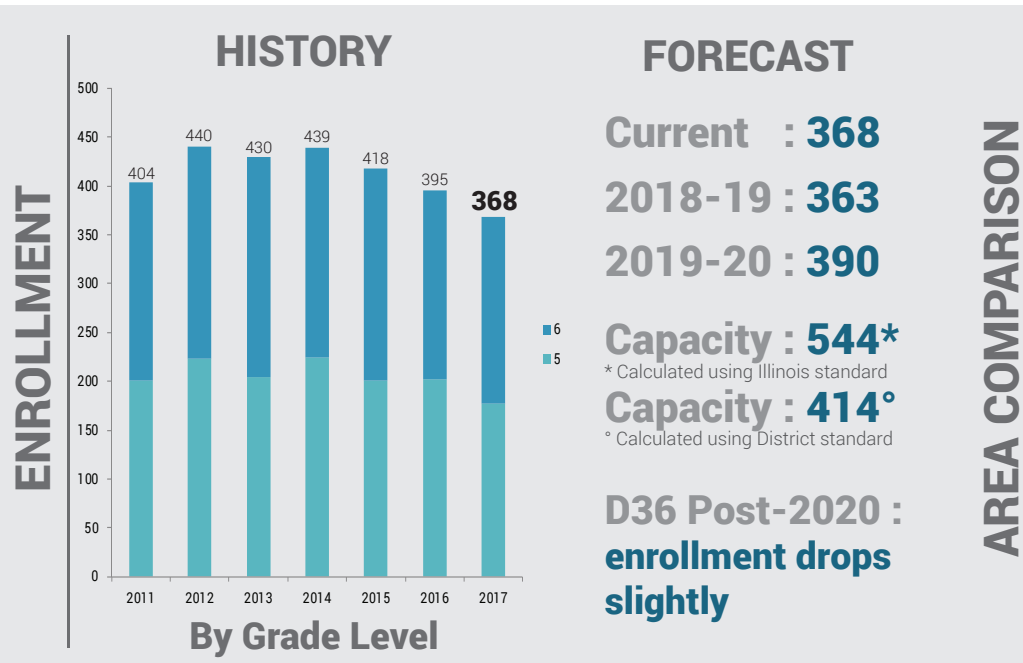
- Connect to the hallway for breakout space
- Lacking space for project-based learning
- Atmosphere is aesthetically pleasing
- Courtyard is great for outdoor learning
- Lacking flexible furniture

An all staff meeting (Listening Tour) was held at each school where faculty gave input about the strengths and weaknesses of the building. Architects and Engineers assessed each building noting deficiencies in material finish and code compliance.

PHYSICAL CONDITION

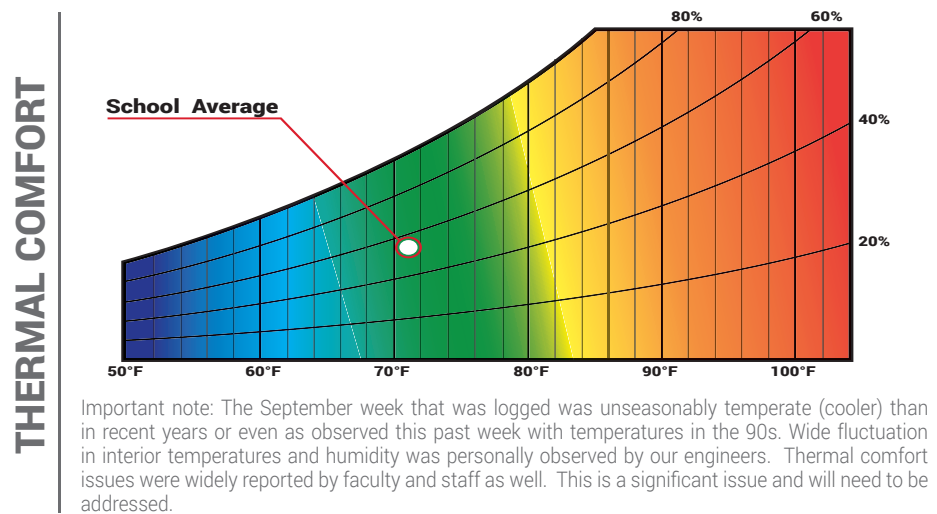
- Roof is at the end of its useful life
- No accessible access to second floor
- Extensive masonry cracking at Gyms
- Recommend replacing boilers
- Recommend replacing water piping

This Education Master Facility Plan, Future Ready D36, is a comprehensive look at your schools. In addition to physical condition, size and other practical measures, DLR Group is qualifying the buildings relative to their ability to foster the progressive learning that Winnetka is renowned for today as well preparing for progressive 2.0 and the types of spatial diversity and plurality that will support student exploration and collaboration in the future. In this phase, we gathered data on how learning is happening through student shadowing and activity logging. The results are captured in this graph above.



Did you know . . .

- 52% are satisfied with the building's acoustics
- 91% have access to daylight
- 95% are dissatisfied with building temperature in the summer



How is this information collected?

The DLR Group team collected data through the use of environmental sensors, District energy bills, and logging equipment. The sensors were placed in several rooms where they logged data from one to seven days. Spot measurements and multiple devices were then used to validate the results.

