

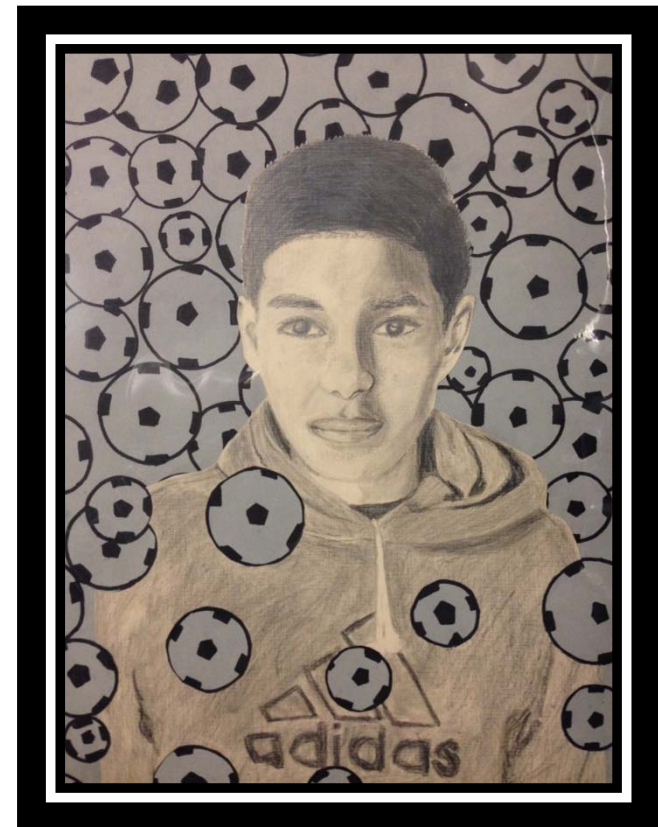
Natalie Jean Felix
Westover School – Grade 5



Student Enrollment

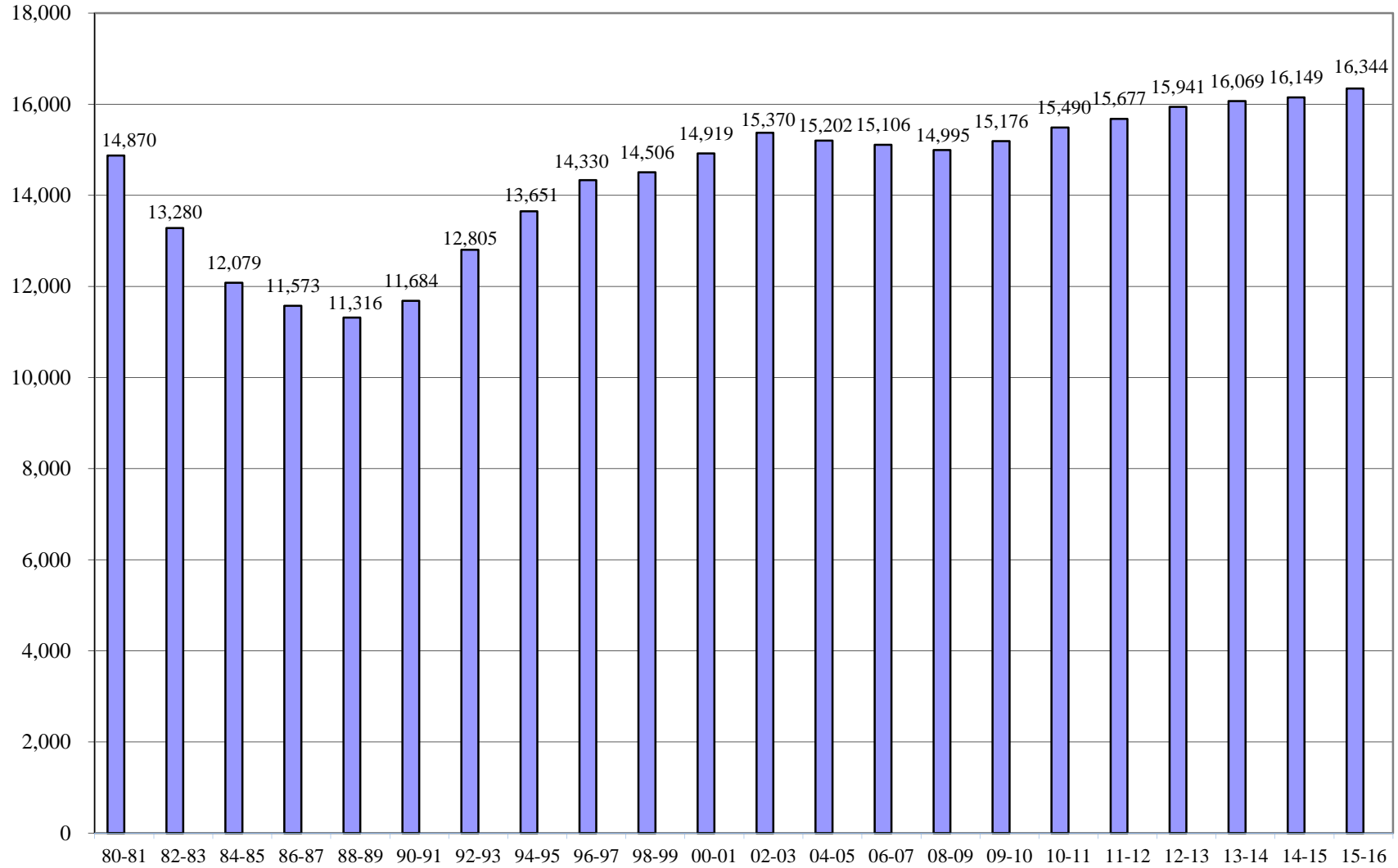


Hailey Braverman
Northeast School – Grade 3



Westhill High School

Stamford Public Schools
Enrollment Actual for 1980 - 2014 and Projected Enrollment for 2015-16
Grades PreK - 12



Actual

- Notes:**
1. All enrollment data (actual and projected) are as of October 1st.
 2. All enrollment data (actual and projected) include students placed outside the district.
 3. All actual enrollment data include out-of-town students at Rogers, AITE and the Vocational Agriculture Program at Westhill High School.
 4. Projections for 2015-16 are from the Research Office. Projections for future years are currently being developed.

2015-16 BUDGET OF THE STAMFORD PUBLIC SCHOOLS

Total Enrollment by Level: Actual 2010-11 to 2014-15 and Projected 2015-16

	Actual 2010-11	Actual 2011-12	Actual 2012-13	Actual 2013-14	Actual 2014-15	Projected 2015-16	Change Actual 2014-15 to Projected 2015-16
Elementary School	7,266	7,412	7,641	7,644	7,713	7,867	154
Middle School	3,170	3,183	3,258	3,318	3,447	3,446	(1)
High School	4,704	4,742	4,674	4,672	4,582	4,598	16
Pre-Kindergarten	79	91	121	182	162	188	26
Sub Total District	15,219	15,428	15,694	15,816	15,904	16,099	195
Out of District Placement	151	147	143	147	148	148	0
Home Instruction/ARTS Program	120	102	104	106	97	97	0
Total School Enrollment	15,490	15,677	15,941	16,069	16,149	16,344	195

Notes:

1. Enrollment at the elementary, middle, and high school levels include Special Education and Bilingual Program students, but do not include Home Instruction or students placed outside the district. Home Instruction and out-of-district students are noted separately.

2015-16 BUDGET OF THE STAMFORD PUBLIC SCHOOLS

Elementary Enrollment by School: Actual 2010-11 to 2014-15 and Projected 2015-16

	Actual 2010-11	Actual 2011-12	Actual 2012-13	Actual 2013-14	Actual 2014-15	Projected 2015-16	Change Actual 2014-15 to Projected 2015-16
Davenport	559	538	544	558	627	665	38
Hart	505	555	586	607	654	638	(16)
Toquam	624	648	680	683	709	719	10
K. T. Murphy	541	531	560	526	553	584	31
Newfield	644	689	691	706	655	674	19
Northeast	729	690	685	663	685	674	(11)
Rogers	574	559	566	545	536	538	2
Roxbury	659	646	646	646	614	614	0
Springdale	587	619	657	708	683	665	(18)
Stark	533	570	613	621	603	608	5
Stillmeadow	595	659	700	692	673	712	39
Westover	716	708	713	689	721	776	55
Sub Total	7,266	7,412	7,641	7,644	7,713	7,867	154
Pre-Kindergarten	79	91	121	182	162	188	26
Home Instruction			1				0
Total Elementary	7,345	7,503	7,763	7,826	7,875	8,055	180

Notes:

1. Special Education and Bilingual Program students are counted in their schools.
2. The estimated 277 sixth, seventh and eighth graders at Rogers are included in middle school counts, not in the elementary counts.

Middle School Enrollment by School: Actual 2010-11 to 2014-15 and Projected 2015-16

	Actual 2010-11	Actual 2011-12	Actual 2012-13	Actual 2013-14	Actual 2014-15	Projected 2015-16	Change Actual 2014-15 to Projected 2015-16
Cloonan	598	577	598	623	616	573	(43)
Dolan	552	528	532	571	533	514	(19)
Turn of River	573	558	583	549	610	575	(35)
Scofield	631	628	627	626	670	705	35
Rippowam	642	648	657	690	753	802	49
Rogers	174	244	261	259	265	277	12
Sub Total	3,170	3,183	3,258	3,318	3,447	3,446	(1)
Home Instruction/ARTS Program	6	4	1	0	0	0	0
Total Middle	3,176	3,187	3,259	3,318	3,447	3,446	(1)

Notes:

1. Enrollment at Rogers includes out-of-town students.

High School Enrollment By School: Actual 2010-11 to 2014-15 and Projected 2015-16

	Actual 2009-10	Actual 2010-11	Actual 2011-12	Actual 2012-13	Actual 2013-14	Actual 2014-15	Projected 2015-16	Change Actual 2014-15 to Projected 2015-16
Stamford	1,704	1,778	1,821	1,899	1,865	1,786	1,759	(27)
Westhill	2,227	2,248	2,229	2,091	2,111	2,103	2,139	36
AITE	675	678	692	684	696	693	700	7
Subtotal High School	4,606	4,704	4,742	4,674	4,672	4,582	4,598	16
Home Instruction/ARTS Program	89	113	98	102	106	97	97	0
Total High School	4,695	4,817	4,840	4,776	4,778	4,679	4,695	16

Notes:

1. Enrollment at AITE and the Westhill Vocational Agriculture Program includes out-of-town students.