

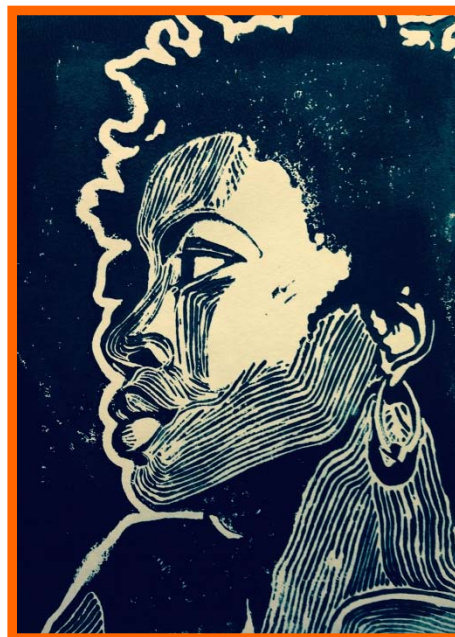


Rogers School – Grade 1

Human Resources



Alanna Harper
Newfield School – Grade 2



Stamford High School

**2015-16 HUMAN RESOURCES BUDGET
STAMFORD PUBLIC SCHOOLS**

Object	2010-11 Actual	2011-12 Actual	2012-13 Actual	2013-14 Actual	2014-15 Approved	2014-15 Adjusted	2015-16 Requested	Variance +/-
101 Teachers	1,261.7	1,264.2	1,284.7	1,318.6	1,353.6	1,354.5	1,367.9	13.4
102 Administrative	69.0	63.0	63.0	60.4	59.9	58.9	58.9	0.0
Total Certified	1,330.7	1,327.2	1,347.7	1,379.0	1,413.5	1,413.4	1,426.8	13.4
113 Administrative - Non Certified	6.0	7.1	6.4	7.0	7.0	7.0	7.0	0.0
114 Clerical	78.4	78.4	78.4	78.4	80.4	80.4	80.4	0.0
115 Paraeducators	286.6	300.6	321.0	339.0	356.0	359.0	360.0	1.0
116 Custodial/Mechanics	168.5	153.0	153.0	151.0	154.0	154.0	154.0	0.0
117 Other	38.0	38.0	38.0	37.0	37.0	37.0	37.0	0.0
Total Non-Certified	577.5	577.1	596.8	612.4	634.4	637.4	638.4	1.0
Total Operating Budget	1,908.2	1,904.3	1,944.5	1,991.4	2,047.9	2,050.8	2,065.2	14.4
101 Teachers	145.9	130.5	114.7	115.7	114.1	115.2	115.2	0.0
102 Administrative	5.0	5.0	5.0	4.6	5.6	4.6	4.6	0.0
Total Certified	150.9	135.5	119.7	120.3	119.7	119.8	119.8	0.0
113 Administrative - Non Certified	2.0	0.9	0.6	1.5	1.0	2.0	2.0	0.0
114 Clerical	3.2	2.3	2.3	2.3	3.3	3.3	3.3	0.0
115 Paraeducators	56.0	39.0	32.0	34.0	37.0	38.0	38.0	0.0
117 Other								0.0
Total Non-Certified	61.2	42.2	34.9	37.8	41.3	43.3	43.3	0.0
Total Grants Budget	212.1	177.7	154.6	158.1	161.0	163.1	163.1	0.0
101 Teachers	1,407.6	1,394.7	1,399.4	1,434.3	1,467.7	1,469.7	1,483.1	13.4
102 Administrative	74.0	68.0	68.0	65.0	65.5	63.5	63.5	0.0
Total Certified	1,481.6	1,462.7	1,467.4	1,499.3	1,533.2	1,533.2	1,546.6	13.4
113 Administrative - Non Certified	8.0	8.0	7.0	8.5	8.0	9.0	9.0	0.0
114 Clerical	81.6	80.7	80.7	80.7	83.7	83.7	83.7	0.0
115 Paraeducators	342.6	339.6	353.0	373.0	393.0	397.0	398.0	1.0
116 Custodial/Mechanics	168.5	153.0	153.0	151.0	154.0	154.0	154.0	0.0
117 Other	38.0	38.0	38.0	37.0	37.0	37.0	37.0	0.0
Total Non-Certified	638.7	619.3	631.7	650.2	675.7	680.7	681.7	1.0
Total System Budget	2,120.3	2,082.0	2,099.1	2,149.5	2,208.9	2,213.9	2,228.3	14.4

2015-16 BUDGET OF THE STAMFORD PUBLIC SCHOOLS
Operating and Grants Budget Positions - Additions/Reductions ()

No.	Object	2014-15 Positions	Elementary Schools	Middle Schools	ELL Teachers	Trauma Support Specialist	High Schools	Special Education	District Wide	2015-16 Positions	Change
101	Teachers	1,354.5	5.4	4.0	4.0	1.0	(1.0)	2.0	(2.0)	1,367.9	13.4
102	Administrative	58.9								58.9	0.0
113	Admin - Non Certified	7.0								7.0	0.0
114	Clerical	80.4								80.4	0.0
115	Paraeducators	359.0	(14.0)				(2.0)	17.0		360.0	1.0
116	Custodial/Mechanics	154.0								154.0	0.0
117	Other	37.0								37.0	0.0
Total Operating Budget		2,050.8	(8.6)	4.0	4.0	1.0	(3.0)	19.0	(2.0)	2,065.2	14.4
101	Teachers	115.2								115.2	0.0
102	Administrative	4.6								4.6	0.0
113	Admin - Non Certified	2.0								2.0	0.0
114	Clerical	3.3								3.3	0.0
115	Paraeducators	38.0								38.0	0.0
117	Other									0.0	
Total Grants Budget		163.1	0.0	0.0	0.0	0.0	0.0	0.0	0.0	163.1	0.0
Total System Budget		2,213.9	(8.6)	4.0	4.0	1.0	(3.0)	19.0	(2.0)	2,228.3	14.4

**Stamford Public Schools
2015-16 Position Budget Additions/Reductions ()**

- Superintendent's request 1/12/15
- BOE approved
- Final Budget

No.	Object	Operating Budget	Grant Budget	Total Budget
101	Teachers - adjusted budget 2014-15	1,354.5	115.2	1,469.7
	Elementary positions due to enrollment: Davenport +2, Newfield -1, Northeast (Classroom & Bilingual) +2, Roxbury -3, Springdale +1, Stark -1, Stillmeadow +1, Westover +1	2.0		2.0
	ELL Program support: Stamford High +1, Westhill +1, District-wide +2	4.0		4.0
	Special Education positions due to IEP requirements: KT Murphy -1, Newfield +1, Rogers -1, Roxbury +1, Stark +1, Westover +1	2.0		2.0
	Trauma Support Specialist for Mental Health Program	1.0		1.0
	Elementary Specialists - Davenport Music .4, Westover Dance or Drama teacher	1.4		1.4
	Middle School Specialists (to accommodate grade 5 students)- Scofield +2, Rippowam +1	3.0		3.0
	Middle School Specialists: Scofield Technology +1, Scofield Exploratory +.5, Scofield Art +1, Rippowam Art +.5	3.0		3.0
	Contingency Positions - Regular Ed +2	2.0		2.0
	Contingency Positions - Special Education +2	2.0		2.0
	Elementary World Language	(2.0)		(2.0)
	Transfer Physical Education teacher (.6) from ARTS Program to Rippowam			-
	Reduce district-wide TOSA: Language Arts and Math	(2.0)		(2.0)
	Reduce secondary positions: Dolan Language Arts -1, Stamford High Science -1, Cloonan In-School Suspension -1	(3.0)		(3.0)
	Reduce vacant Magnet position - Rogers	(1.0)		(1.0)
	Add Administrative Intern (.5 Westover, .5 Northeast)	1.0		1.0
	Teacher Budget 2015-16	1,367.9	115.2	1,483.1
102	Administrator- adjusted budget 2014-15	58.9	4.6	63.5
	Administrative Budget 2015-16	58.9	4.6	63.5

**Stamford Public Schools
2015-16 Position Budget Additions/Reductions ()**

Superintendent's request 1/12/15
BOE approved
Final Budget

No.	Object	Operating Budget	Grant Budget	Total Budget
113	Administrative - Non Certified - adjusted budget 2014-15	7.0	2.0	9.0
Admin Non-Cert. Budget 2015-16		7.0	2.0	9.0
114	Clerical- adjusted budget 2014-15	80.4	3.3	83.7
Clerical Budget 2015-16		80.4	3.3	83.7
115	Paraeducators- adjusted budget 2014-15	359.0	38.0	397.0
	Reduce building-wide Paras- Elementary Schools	(12.0)		(12.0)
	Reallocate Kindergarten Paras based on Kindergarten sections: Hart -1, Northeast +1, Roxbury -1, Springdale +1, Stark -1, Stillmeadow +1	0.0		0.0
	Add full-time Paras to cover part-time Special Education Para responsibilities	15.0		15.0
	Contingency for Special Education Paras	2.0		2.0
	Reduce High School Science Paras	(2.0)		(2.0)
	Reduce Elementary Science Paras	(2.0)		(2.0)
Paraeducators Budget 2015-16		360.0	38.0	398.0
116	Custodial/Mechanics- adjusted budget 2014-15	154.0		154.0
Custodial/Mechanic Budget 2015-16		154.0	0.0	154.0
117	Other- adjusted budget 2014-15	37.0		37.0
Other Budget 2015-16		37.0	0.0	37.0
Total BOE Budget 2015-16		2,065.2	163.1	2,228.3
Changes from 2014-15 Budget		14.4	0.0	14.4

Stamford Public Schools
 Organization Chart – 2014-15
 August 18, 2014

