

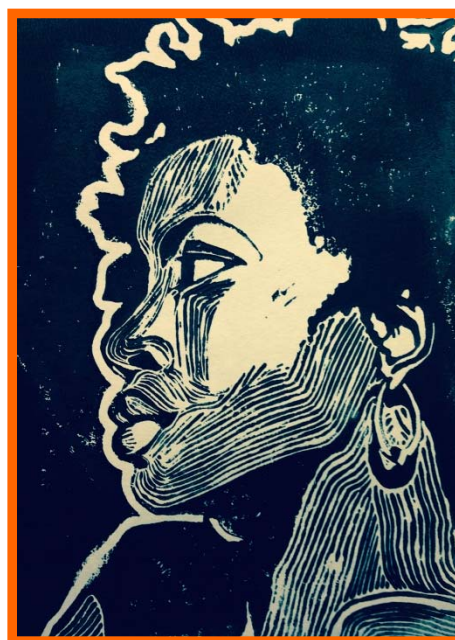


Rogers School – Grade 1

# *Human Resources*



Alanna Harper  
Newfield School – Grade 2



Stamford High School

**2015-16 HUMAN RESOURCES BUDGET  
STAMFORD PUBLIC SCHOOLS**

Object	2010-11 Actual	2011-12 Actual	2012-13 Actual	2013-14 Actual	2014-15 Approved	2014-15 Adjusted	2015-16 Approved	Variance +/-	
101	Teachers	1,261.7	1,264.2	1,284.7	1,318.6	1,353.6	1,354.5	1,359.3	4.8
102	Administrative	69.0	63.0	63.0	60.4	59.9	58.9	58.7	(0.2)
	<b>Total Certified</b>	<b>1,330.7</b>	<b>1,327.2</b>	<b>1,347.7</b>	<b>1,379.0</b>	<b>1,413.5</b>	<b>1,413.4</b>	<b>1,418.0</b>	4.6
113	Administrative - Non Certified	6.0	7.1	6.4	7.0	7.0	7.0	7.0	0.0
114	Clerical	78.4	78.4	78.4	78.4	80.4	80.4	80.4	0.0
115	Paraeducators	286.6	300.6	321.0	339.0	356.0	359.0	345.0	(14.0)
116	Custodial/Mechanics	168.5	153.0	153.0	151.0	154.0	154.0	154.0	0.0
117	Other	38.0	38.0	38.0	37.0	37.0	37.0	36.5	(0.5)
	<b>Total Non-Certified</b>	<b>577.5</b>	<b>577.1</b>	<b>596.8</b>	<b>612.4</b>	<b>634.4</b>	<b>637.4</b>	<b>622.9</b>	(14.5)
	<b>Total Operating Budget</b>	<b>1,908.2</b>	<b>1,904.3</b>	<b>1,944.5</b>	<b>1,991.4</b>	<b>2,047.9</b>	<b>2,050.8</b>	<b>2,040.9</b>	(9.9)
101	Teachers	145.9	130.5	114.7	115.7	114.1	115.2	111.2	(4.0)
102	Administrative	5.0	5.0	5.0	4.6	5.6	4.6	4.6	0.0
	<b>Total Certified</b>	<b>150.9</b>	<b>135.5</b>	<b>119.7</b>	<b>120.3</b>	<b>119.7</b>	<b>119.8</b>	<b>115.8</b>	(4.0)
113	Administrative - Non Certified	2.0	0.9	0.6	1.5	1.0	2.0	2.0	0.0
114	Clerical	3.2	2.3	2.3	2.3	3.3	3.3	3.3	0.0
115	Paraeducators	56.0	39.0	32.0	34.0	37.0	38.0	53.0	15.0
117	Other								0.0
	<b>Total Non-Certified</b>	<b>61.2</b>	<b>42.2</b>	<b>34.9</b>	<b>37.8</b>	<b>41.3</b>	<b>43.3</b>	<b>58.3</b>	15.0
	<b>Total Grants Budget</b>	<b>212.1</b>	<b>177.7</b>	<b>154.6</b>	<b>158.1</b>	<b>161.0</b>	<b>163.1</b>	<b>174.1</b>	11.0
101	Teachers	1,407.6	1,394.7	1,399.4	1,434.3	1,467.7	1,469.7	1,470.5	0.8
102	Administrative	74.0	68.0	68.0	65.0	65.5	63.5	63.3	(0.2)
	<b>Total Certified</b>	<b>1,481.6</b>	<b>1,462.7</b>	<b>1,467.4</b>	<b>1,499.3</b>	<b>1,533.2</b>	<b>1,533.2</b>	<b>1,533.8</b>	0.6
113	Administrative - Non Certified	8.0	8.0	7.0	8.5	8.0	9.0	9.0	0.0
114	Clerical	81.6	80.7	80.7	80.7	83.7	83.7	83.7	0.0
115	Paraeducators	342.6	339.6	353.0	373.0	393.0	397.0	398.0	1.0
116	Custodial/Mechanics	168.5	153.0	153.0	151.0	154.0	154.0	154.0	0.0
117	Other	38.0	38.0	38.0	37.0	37.0	37.0	36.5	(0.5)
	<b>Total Non-Certified</b>	<b>638.7</b>	<b>619.3</b>	<b>631.7</b>	<b>650.2</b>	<b>675.7</b>	<b>680.7</b>	<b>681.2</b>	0.5
	<b>Total System Budget</b>	<b>2,120.3</b>	<b>2,082.0</b>	<b>2,099.1</b>	<b>2,149.5</b>	<b>2,208.9</b>	<b>2,213.9</b>	<b>2,215.0</b>	1.1

**2015-16 BUDGET OF THE STAMFORD PUBLIC SCHOOLS**  
**Operating and Grants Budget Positions - Additions/Reductions ( )**

No.	Object	2014-15 Positions	Elementary	IDEA Grant	Medicaid Grant	Admin Intern	Math Support	Sco/Rip 5th & 6th	ELL Teachers	Pupil Services	Middle School	Secondary Science	TOSA's	Special Education	Contingency	New School	2015-16 Positions	Change
101	Teachers	1,354.5	(7.6)	4.0		2.0	(4.0)	4.4	4.0	1.0	(2.0)	(1.0)	(2.0)	4.0	2.0		1,359.3	4.8
102	Administrative	58.9														(0.2)	58.7	(0.2)
113	Admin - Non Certified	7.0															7.0	0.0
114	Clerical	80.4															80.4	0.0
115	Paraeducators	359.0	(14.0)									(2.0)		2.0			345.0	(14.0)
116	Custodial/Mechanics	154.0															154.0	0.0
117	Other	37.0								(0.5)							36.5	(0.5)
<b>Total Operating Budget</b>		<b>2,050.8</b>	<b>(21.6)</b>	<b>4.0</b>	<b>0.0</b>	<b>2.0</b>	<b>(4.0)</b>	<b>4.4</b>	<b>4.0</b>	<b>0.5</b>	<b>(2.0)</b>	<b>(3.0)</b>	<b>(2.0)</b>	<b>6.0</b>	<b>2.0</b>	<b>(0.2)</b>	<b>2,040.9</b>	<b>(9.9)</b>
101	Teachers	115.2		(4.0)													111.2	(4.0)
102	Administrative	4.6															4.6	0.0
113	Admin - Non Certified	2.0															2.0	0.0
114	Clerical	3.3															3.3	0.0
115	Paraeducators	38.0		7.0	8.0												53.0	15.0
117	Other																0.0	
<b>Total Grants Budget</b>		<b>163.1</b>	<b>0.0</b>				<b>0.0</b>		<b>0.0</b>	<b>0.0</b>		<b>0.0</b>		<b>0.0</b>		<b>0.0</b>	<b>174.1</b>	<b>11.0</b>
<b>Total System Budget</b>		<b>2,213.9</b>	<b>(21.6)</b>				<b>(4.0)</b>		<b>4.0</b>	<b>0.5</b>		<b>(3.0)</b>		<b>6.0</b>		<b>(0.2)</b>	<b>2,215.0</b>	<b>1.1</b>

**Stamford Public Schools  
2015-16 Position Budget Additions/Reductions ( )**

Superintendent's request 1/12/15  
BOE approved  
Final Budget

No.	Object	Operating Budget	Grant Budget	Total Budget
101	Teachers - adjusted budget 2014-15	1,354.5	115.2	1,469.7
	Elementary positions due to enrollment: Davenport +2, Newfield -1, Northeast ( Classroom & Bilingual) +2, Roxbury -3, Springdale +1, Stark -1, Stillmeadow +1, Westover +1	2.0		2.0
	ELL Program support: Stamford High +1, Westhill +1, District-wide +2	4.0		4.0
	Special Education positions due to IEP requirements: KT Murphy -1, Newfield +1, Rogers -1, Roxbury +1, Stark +1, Westover +1	2.0		2.0
	Trauma Support Specialist for Mental Health Program	1.0		1.0
	Elementary Specialists - Davenport Music .4, Westover Dance or Drama teacher	1.4		1.4
	Middle School Specialists (to accommodate grade 5 students)- Scofield +2, Rippowam +1	3.0		3.0
	Middle School Specialists: Scofield Technology +1, Scofield Exploratory +.5, Scofield Art +1, Rippowam Art +.5	3.0		3.0
	Contingency Positions - Regular Ed +2	2.0		2.0
	Contingency Positions - Special Education +2	2.0		2.0
	Elementary World Language	(2.0)		(2.0)
	Transfer Physical Education teacher (.6) from ARTS Program to Rippowam			-
	Reduce district-wide TOSA: Language Arts and Math	(2.0)		(2.0)
	Reduce secondary positions: Dolan Language Arts -1, Stamford High Science -1, Cloonan In-School Suspension -1	(3.0)		(3.0)
	Reduce vacant Magnet position - Rogers	(1.0)		(1.0)
	Add Administrative Intern (.5 Westover, .5 Northeast)	1.0		1.0
	Reduce Elementary Teachers (Toquam, KT Murphy, Newfield, Springdale, Stark, Westover and 2 at Northeast)	(8.0)		(8.0)
	Reclass SRBI teachers from Grant to Operating	4.0	(4.0)	-
	Reduce Middle School Math Support Specialists (Cloonan, Dolan, TOR, Rippowam)	(4.0)		(4.0)
	Reduce Technology at Scofield	(1.0)		(1.0)
	Reduce Music at Scofield	(0.6)		(0.6)
	Add Administrative Intern Hart	1.0		1.0
	<b>Teacher Budget 2015-16</b>	<b>1,359.3</b>	<b>111.2</b>	<b>1,470.5</b>
102	Administrator- adjusted budget 2014-15	58.9	4.6	63.5
	Reduce New School Principal	(0.2)		(0.2)

**Stamford Public Schools  
2015-16 Position Budget Additions/Reductions ( )**

Superintendent's request 1/12/15  
BOE approved  
Final Budget

No.	Object	Operating Budget	Grant Budget	Total Budget
<b>Administrative Budget 2015-16</b>		<b>58.7</b>	<b>4.6</b>	<b>63.3</b>
113	Administrative - Non Certified - adjusted budget 2014-15	7.0	2.0	9.0
<b>Admin Non-Cert. Budget 2015-16</b>		<b>7.0</b>	<b>2.0</b>	<b>9.0</b>
114	Clerical- adjusted budget 2014-15	80.4	3.3	83.7
<b>Clerical Budget 2015-16</b>		<b>80.4</b>	<b>3.3</b>	<b>83.7</b>
115	Paraeducators- adjusted budget 2014-15	359.0	38.0	397.0
	Reduce building-wide Paras- Elementary Schools	(12.0)		(12.0)
	Reallocate Kindergarten Paras based on Kindergarten sections: Hart -1, Northeast +1, Roxbury -1, Springdale +1, Stark -1, Stillmeadow +1	0.0		0.0
	Add full-time Paras to cover part-time Special Education Para responsibilities	15.0		15.0
	Contingency for Special Education Paras	2.0		2.0
	Reduce High School Science Paras	(2.0)		(2.0)
	Reduce Elementary Science Paras	(2.0)		(2.0)
	Reclass Special Education Paras to Grants (7 IDEA, 8 Medicaid)	(15.0)	15.0	-
<b>Paraeducators Budget 2015-16</b>		<b>345.0</b>	<b>53.0</b>	<b>398.0</b>
116	Custodial/Mechanics- adjusted budget 2014-15	154.0		154.0
<b>Custodial/Mechanic Budget 2015-16</b>		<b>154.0</b>	<b>0.0</b>	<b>154.0</b>
117	Other- adjusted budget 2014-15	37.0		37.0
	Reduce Full Time Employee to Part-Time	(0.5)		(0.5)
<b>Other Budget 2015-16</b>		<b>36.5</b>	<b>0.0</b>	<b>36.5</b>
<b>Total BOE Budget 2015-16</b>		<b>2,040.9</b>	<b>174.1</b>	<b>2,215.0</b>
<b>Changes from 2014-15 Budget</b>		<b>(9.9)</b>	<b>11.0</b>	<b>1.1</b>

Stamford Public Schools  
 Organization Chart – 2014-15  
 August 18, 2014

