

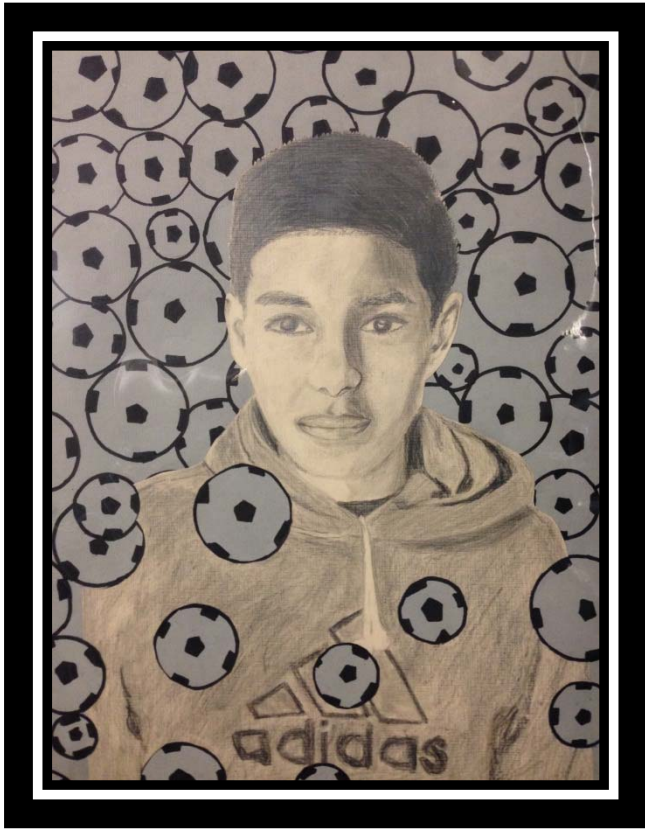
**Natalie Jean Felix**  
Westover School – Grade 5



# *Student Enrollment*

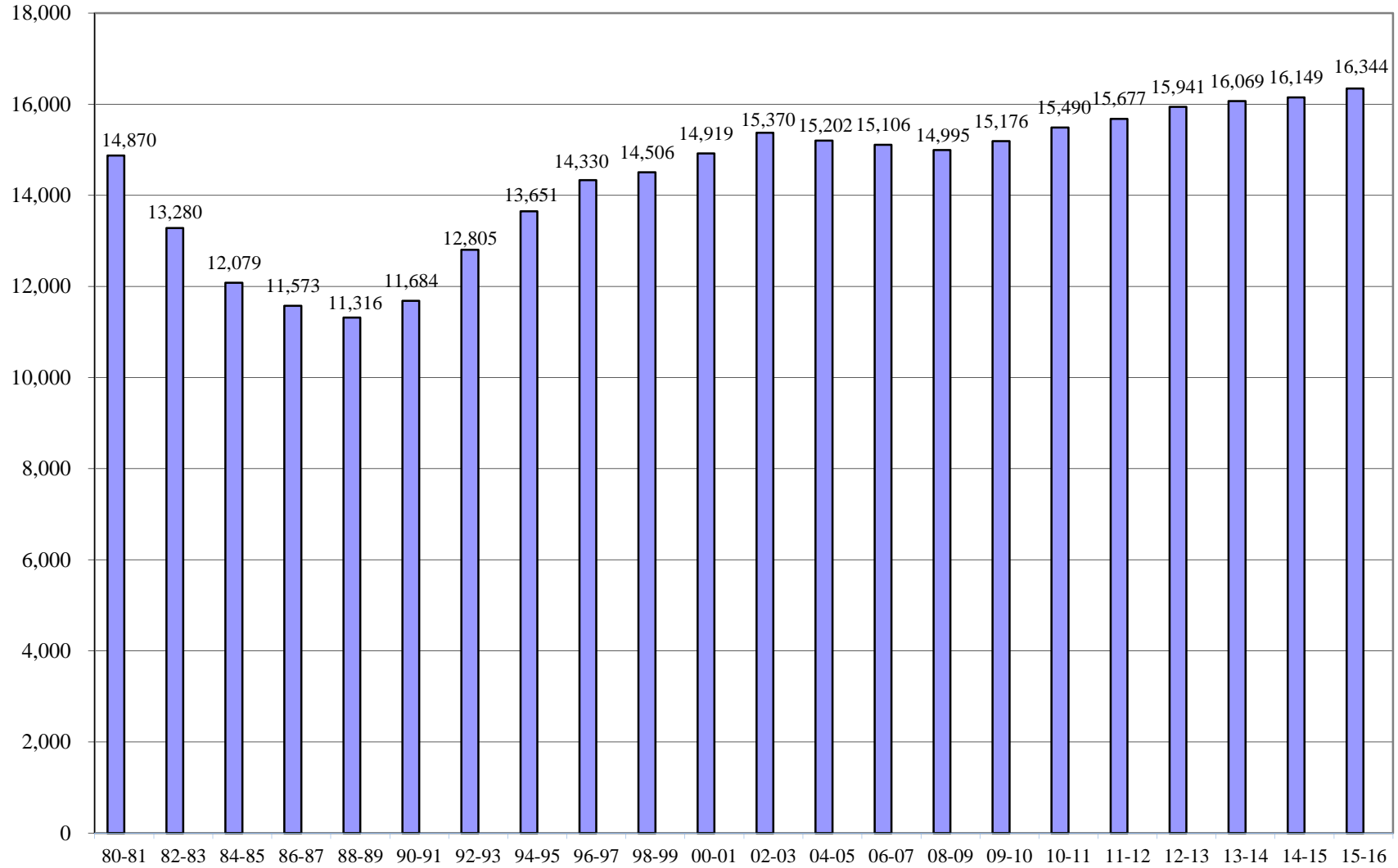


**Hailey Braverman**  
Northeast School – Grade 3



Westhill High School

**Stamford Public Schools**  
**Enrollment Actual for 1980 - 2014 and Projected Enrollment for 2015-16**  
**Grades PreK - 12**



**Actual**

- Notes:**
1. All enrollment data (actual and projected) are as of October 1<sup>st</sup>.
  2. All enrollment data (actual and projected) include students placed outside the district.
  3. All actual enrollment data include out-of-town students at Rogers, AITE and the Vocational Agriculture Program at Westhill High School.
  4. Projections for 2015-16 are from the Research Office. Projections for future years are currently being developed.

**2015-16 BUDGET OF THE STAMFORD PUBLIC SCHOOLS**

**Total Enrollment by Level: Actual 2010-11 to 2014-15 and Projected 2015-16**

	<b>Actual 2010-11</b>	<b>Actual 2011-12</b>	<b>Actual 2012-13</b>	<b>Actual 2013-14</b>	<b>Actual 2014-15</b>	<b>Projected 2015-16</b>	<b>Change Actual 2014-15 to Projected 2015-16</b>
<b>Elementary School</b>	7,266	7,412	7,641	7,644	7,713	7,867	154
<b>Middle School</b>	3,170	3,183	3,258	3,318	3,447	3,446	(1)
<b>High School</b>	4,704	4,742	4,674	4,672	4,582	4,598	16
<b>Pre-Kindergarten</b>	79	91	121	182	162	188	26
<b>Sub Total District</b>	<b>15,219</b>	<b>15,428</b>	<b>15,694</b>	<b>15,816</b>	<b>15,904</b>	<b>16,099</b>	<b>195</b>
<b>Out of District Placement</b>	151	147	143	147	148	148	0
<b>Home Instruction/ARTS Program</b>	120	102	104	106	97	97	0
<b>Total School Enrollment</b>	<b>15,490</b>	<b>15,677</b>	<b>15,941</b>	<b>16,069</b>	<b>16,149</b>	<b>16,344</b>	<b>195</b>

**Notes:**

1. Enrollment at the elementary, middle, and high school levels include Special Education and Bilingual Program students, but do not include Home Instruction or students placed outside the district. Home Instruction and out-of-district students are noted separately.

**2015-16 BUDGET OF THE STAMFORD PUBLIC SCHOOLS**

**Elementary Enrollment by School: Actual 2010-11 to 2014-15 and Projected 2015-16**

	<b>Actual 2010-11</b>	<b>Actual 2011-12</b>	<b>Actual 2012-13</b>	<b>Actual 2013-14</b>	<b>Actual 2014-15</b>	<b>Projected 2015-16</b>	<b>Change Actual 2014-15 to Projected 2015-16</b>
<b>Davenport</b>	559	538	544	558	627	665	38
<b>Hart</b>	505	555	586	607	654	638	(16)
<b>Toquam</b>	624	648	680	683	709	719	10
<b>K. T. Murphy</b>	541	531	560	526	553	584	31
<b>Newfield</b>	644	689	691	706	655	674	19
<b>Northeast</b>	729	690	685	663	685	674	(11)
<b>Rogers</b>	574	559	566	545	536	538	2
<b>Roxbury</b>	659	646	646	646	614	614	0
<b>Springdale</b>	587	619	657	708	683	665	(18)
<b>Stark</b>	533	570	613	621	603	608	5
<b>Stillmeadow</b>	595	659	700	692	673	712	39
<b>Westover</b>	716	708	713	689	721	776	55
<b>Sub Total</b>	<b>7,266</b>	<b>7,412</b>	<b>7,641</b>	<b>7,644</b>	<b>7,713</b>	<b>7,867</b>	<b>154</b>
<b>Pre-Kindergarten</b>	79	91	121	182	162	188	26
<b>Home Instruction</b>			1				0
<b>Total Elementary</b>	<b>7,345</b>	<b>7,503</b>	<b>7,763</b>	<b>7,826</b>	<b>7,875</b>	<b>8,055</b>	<b>180</b>

**Notes:**

1. Special Education and Bilingual Program students are counted in their schools.
2. The estimated 277 sixth, seventh and eighth graders at Rogers are included in middle school counts, not in the elementary counts.

**Middle School Enrollment by School: Actual 2010-11 to 2014-15 and Projected 2015-16**

	<b>Actual 2010-11</b>	<b>Actual 2011-12</b>	<b>Actual 2012-13</b>	<b>Actual 2013-14</b>	<b>Actual 2014-15</b>	<b>Projected 2015-16</b>	<b>Change Actual 2014-15 to Projected 2015-16</b>
<b>Cloonan</b>	598	577	598	623	616	573	(43)
<b>Dolan</b>	552	528	532	571	533	514	(19)
<b>Turn of River</b>	573	558	583	549	610	575	(35)
<b>Scofield</b>	631	628	627	626	670	705	35
<b>Rippowam</b>	642	648	657	690	753	802	49
<b>Rogers</b>	174	244	261	259	265	277	12
<b>Sub Total</b>	<b>3,170</b>	<b>3,183</b>	<b>3,258</b>	<b>3,318</b>	<b>3,447</b>	<b>3,446</b>	<b>(1)</b>
<b>Home Instruction/ARTS Program</b>	6	4	1	0	0	0	0
<b>Total Middle</b>	<b>3,176</b>	<b>3,187</b>	<b>3,259</b>	<b>3,318</b>	<b>3,447</b>	<b>3,446</b>	<b>(1)</b>

**Notes:**

1. Enrollment at Rogers includes out-of-town students.

### High School Enrollment By School: Actual 2010-11 to 2014-15 and Projected 2015-16

	Actual 2009-10	Actual 2010-11	Actual 2011-12	Actual 2012-13	Actual 2013-14	Actual 2014-15	Projected 2015-16	Change Actual 2014-15 to Projected 2015-16
<b>Stamford</b>	1,704	1,778	1,821	1,899	1,865	1,786	1,759	(27)
<b>Westhill</b>	2,227	2,248	2,229	2,091	2,111	2,103	2,139	36
<b>AITE</b>	675	678	692	684	696	693	700	7
<b>Subtotal High School</b>	<b>4,606</b>	<b>4,704</b>	<b>4,742</b>	<b>4,674</b>	<b>4,672</b>	<b>4,582</b>	<b>4,598</b>	<b>16</b>
<b>Home Instruction/ARTS Program</b>	89	113	98	102	106	97	97	0
<b>Total High School</b>	<b>4,695</b>	<b>4,817</b>	<b>4,840</b>	<b>4,776</b>	<b>4,778</b>	<b>4,679</b>	<b>4,695</b>	<b>16</b>

**Notes:**

1. Enrollment at AITE and the Westhill Vocational Agriculture Program includes out-of-town students.