



Cristian Vitti
Toquam School, Grade 4

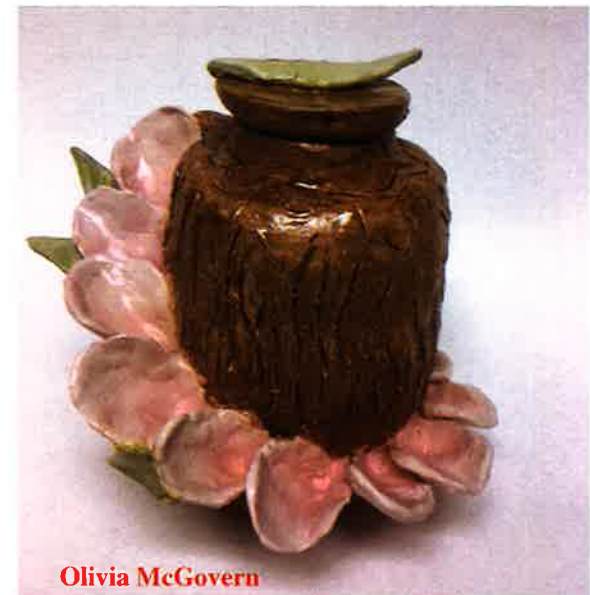


Kate Pelletier
Northeast School, Kindergarten



Frances Vandervoort
Dolan Middle School, Grade 8

Laurel Fuda
Scofield Magnet Middle School, Grade 6

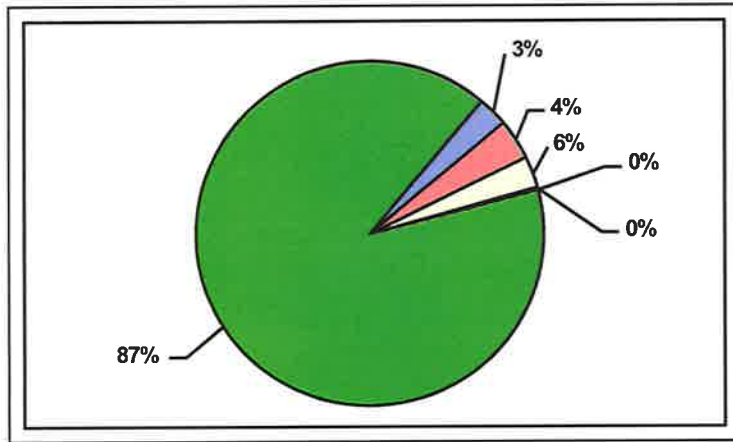


Olivia McGovern
Stamford High School, Grade 12

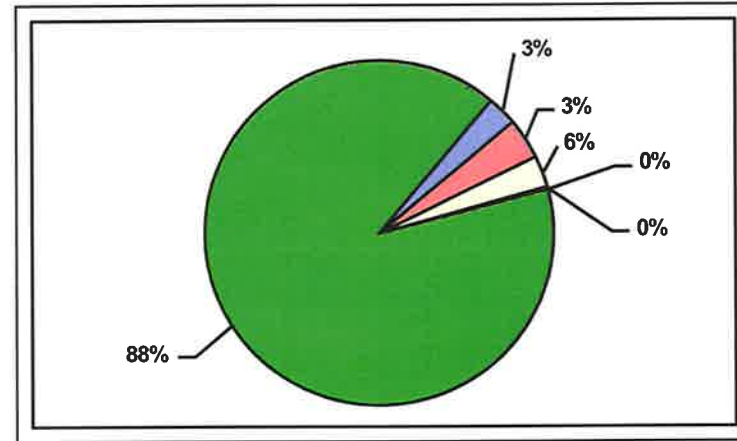
Revenue

2017-18 BUDGET OF THE STAMFORD PUBLIC SCHOOLS TOTAL REVENUE BUDGET

2016-17



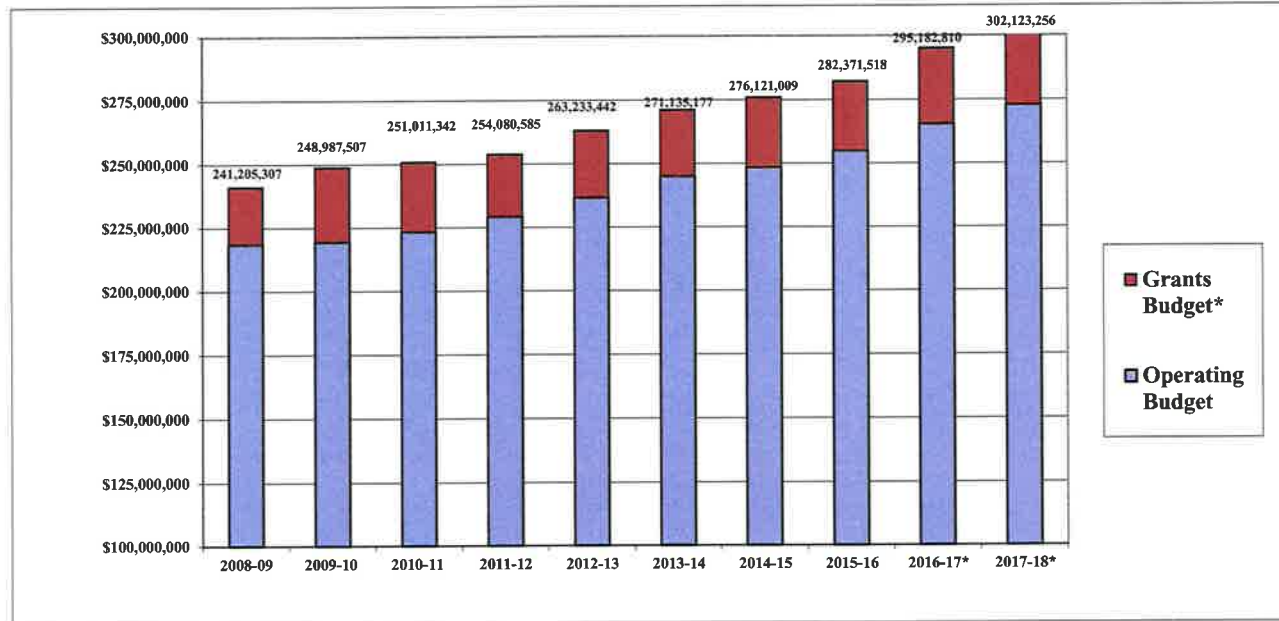
2017-18



City of Stamford- Operating Budget	\$257,138,570	87.1%
State Grants	\$18,247,952	6.2%
Federal Grants	\$11,129,862	3.8%
State Entitlements	\$8,240,529	2.8%
Private and Other Grants	\$261,697	0.1%
Other Income	\$164,200	0.1%
Total Operating & Grant Budget	\$295,182,810	100.0%

City of Stamford- Operating Budget	\$264,576,363	87.6%
State Grants	\$18,195,160	6.0%
Federal Grants	\$10,667,261	3.5%
State Entitlements	\$8,240,529	2.7%
Private and Other Grants	\$273,743	0.1%
Other Income	\$170,200	0.1%
Total Operating & Grant Budget	\$302,123,256	100.0%

2017-18 BUDGET OF THE STAMFORD PUBLIC SCHOOLS REVENUE BY SOURCE



	2008-09	2009-10	2010-11	2011-12	2012-13	2013-14	2014-15	2015-16	2016-17*	2017-18*
Operating Budget	\$218,609,176	\$219,408,146	\$223,382,203	\$229,275,948	\$236,717,158	\$245,072,959	\$248,574,216	\$255,113,422	\$265,543,299	\$272,987,092
Grants Budget*	\$22,596,131	\$29,579,361	\$27,629,139	\$24,804,637	\$26,516,284	\$26,062,218	\$27,546,793	\$27,258,096	\$29,639,511	\$29,136,164
Total	\$241,205,307	\$248,987,507	\$251,011,342	\$254,080,585	\$263,233,442	\$271,135,177	\$276,121,009	\$282,371,518	\$295,182,810	\$302,123,256

* = grant award amount or latest estimate as of budget printing date

**2017-18 BUDGET OF THE STAMFORD PUBLIC SCHOOLS
GENERAL FUND REVENUE TO CITY OF STAMFORD**

	2011-12 Actual	2012-13 Actual	2013-14 Actual	2014-15 Actual	2015-16 Actual	2016-17** Estimated	2017-18** Estimated
REVENUE STATE OF CONNECTICUT							
Education Cost Sharing***	\$8,066,574	\$7,894,337	\$7,925,459	\$8,120,437	\$8,031,326	\$7,978,877	\$7,978,877
Public Transportation	\$75,457	\$54,217	\$78,927	\$95,896	\$89,059		
Non-Public Transportation	\$43,441	\$30,892	\$52,488	\$70,551	\$59,978		
Special Education Equity	\$48,132						
Vocational Agriculture Operating Grant****	\$110,464	\$154,998	\$154,998	\$208,198	\$205,518	\$261,652	\$261,652
TOTAL STATE REVENUE	\$8,344,068	\$8,134,444	\$8,211,872	\$8,495,082	\$8,385,881	\$8,240,529	\$8,240,529
OTHER REVENUE							
Tuitions	\$49,983	\$101,874	\$120,769	\$171,130	\$200,801	\$164,000	\$170,000
Miscellaneous	\$2,908	\$415	\$205		\$243	\$200	\$200
TOTAL OTHER REVENUE	\$52,891	\$102,289	\$120,974	\$171,130	\$201,044	\$164,200	\$170,200
TOTAL REVENUE	\$8,396,959	\$8,236,733	\$8,332,846	\$8,666,212	\$8,586,925	\$8,404,729	\$8,410,729
TOTAL OPERATING BUDGET	\$229,275,948	\$236,717,158	\$245,072,959	\$248,574,216	\$255,113,422	\$265,543,299	\$272,987,092
NET COST TO CITY	\$220,878,989	\$228,480,425	\$236,740,113	\$239,908,004	\$246,526,497	\$257,138,570	\$264,576,363

**= latest estimate based on best available information

***= does not include Alliance District Grant which is shown in Section 9 as "Grant Revenue"

****= does not include additional Vo-Ag supplement of \$107,435 which is shown in Section 9 as "Grant Revenue"