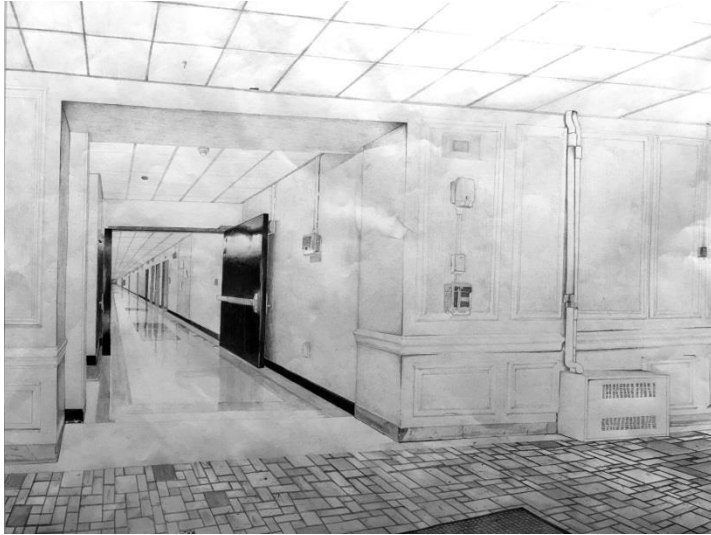


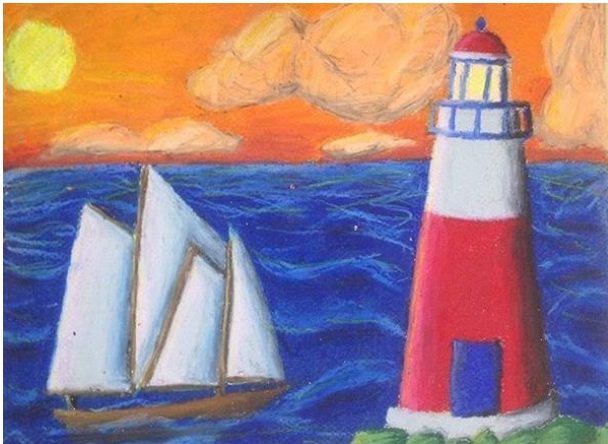
# Human Resources



Krantz Medeus  
Stamford High School, Grade 12



Sophia Abbazia  
Rogers International School, Grade 6



Charlotte Long  
Turn of River Middle School, Grade 8



Lilly Lapine  
Scofield Magnet Middle School, Grade 7



Emily Soruluz  
Stark School, Grade 4

## 2018-19 HUMAN RESOURCES BUDGET STAMFORD PUBLIC SCHOOLS

Object	2014-15 Actual	2015-16 Actual	2016-17 Actual	2017-18 Budget	2017-18 Adjusted	2018-19 Budget	Variance +/- to 2017-18
101 Teachers	1,354.5	1,350.6	1,373.8	1,366.0	1,367.6	1,382.6	15.0
102 Administrative	58.9	59.4	61.4	61.4	61.4	63.6	2.2
<b>Total Certified</b>	<b>1,413.4</b>	<b>1,410.0</b>	<b>1,435.2</b>	<b>1,427.4</b>	<b>1,429.0</b>	<b>1,446.2</b>	<b>17.2</b>
113 Administrative - Non-Certified	7.0	7.0	7.0	8.0	8.0	8.0	0.0
114 Clerical	80.4	71.4	81.4	79.9	79.9	80.4	0.5
115 Paraeducators	359.0	332.0	331.0	342.0	364.0	364.0	0.0
116 Custodial/Mechanics	154.0	153.0	155.0	153.0	153.0	153.0	0.0
117 Other	37.0	36.5	39.5	39.5	39.5	40.5	1.0
<b>Total Non-Certified</b>	<b>637.4</b>	<b>599.9</b>	<b>613.9</b>	<b>622.4</b>	<b>644.4</b>	<b>645.9</b>	<b>1.5</b>
<b>Total Operating Budget</b>	<b>2,050.8</b>	<b>2,009.9</b>	<b>2,049.1</b>	<b>2,049.8</b>	<b>2,073.4</b>	<b>2,092.1</b>	<b>18.7</b>
101 Teachers	115.2	111.2	118.7	128.7	122.1	126.6	4.5
102 Administrative	4.6	4.6	4.6	4.6	4.6	4.4	(0.2)
<b>Total Certified</b>	<b>119.8</b>	<b>115.8</b>	<b>123.3</b>	<b>133.3</b>	<b>126.7</b>	<b>131.0</b>	<b>4.3</b>
113 Administrative - Non-Certified	2.0	1.0	3.4	2.0	1.0	1.0	0.0
114 Clerical	3.3	4.3	4.3	4.3	5.3	4.8	(0.5)
115 Paraeducators	38.0	54.0	54.0	54.0	61.0	60.0	(1.0)
117 Other							
<b>Total Non-Certified</b>	<b>43.3</b>	<b>59.3</b>	<b>61.7</b>	<b>60.3</b>	<b>67.3</b>	<b>65.8</b>	<b>(1.5)</b>
<b>Total Grants Budget</b>	<b>163.1</b>	<b>175.1</b>	<b>185.0</b>	<b>193.6</b>	<b>194.0</b>	<b>196.8</b>	<b>2.8</b>
101 Teachers	1,469.7	1,461.8	1,492.5	1,494.7	1,489.7	1,509.2	19.5
102 Administrative	63.5	64.0	66.0	66.0	66.0	68.0	2.0
<b>Total Certified</b>	<b>1,533.2</b>	<b>1,525.8</b>	<b>1,558.5</b>	<b>1,560.7</b>	<b>1,555.7</b>	<b>1,577.2</b>	<b>21.5</b>
113 Administrative - Non-Certified	9.0	8.0	10.4	10.0	9.0	9.0	0.0
114 Clerical	83.7	75.7	85.7	84.2	85.2	85.2	0.0
115 Paraeducators	397.0	386.0	385.0	396.0	425.0	424.0	(1.0)
116 Custodial/Mechanics	154.0	153.0	155.0	153.0	153.0	153.0	0.0
117 Other	37.0	36.5	39.5	39.5	39.5	40.5	1.0
<b>Total Non-Certified</b>	<b>680.7</b>	<b>659.2</b>	<b>675.6</b>	<b>682.7</b>	<b>711.7</b>	<b>711.7</b>	<b>0.0</b>
<b>Total System Budget</b>	<b>2,213.9</b>	<b>2,185.0</b>	<b>2,234.1</b>	<b>2,243.4</b>	<b>2,267.4</b>	<b>2,288.9</b>	<b>21.5</b>

**2018-19 BUDGET OF THE STAMFORD PUBLIC SCHOOLS**  
**Operating and Grants Budget Positions - Additions/Reductions ( )**

No.	Object	2017-18 Positions	Elementary	Middle School	High School	Special Education	Pupil Svcs	Bilingual ELL	HS Athl Dir	DW C&I	From Grants	Contingency	2018-19 Positions	Change
101	Teachers	1,367.6	(5.5)	1.5	2.0	7.5	3.5	2.0	(2.0)		1.0	5.0	1,382.6	15.0
102	Administrative	61.4							2.0		0.2		63.6	2.2
113	Admin - Non-Certified	8.0											8.0	0.0
114	Clerical	79.9									0.5		80.4	0.5
115	Paraeducators	364.0	(1.0)					1.0					364.0	0.0
116	Custodial/Mechanics	153.0											153.0	0.0
117	Other	39.5		1.0									40.5	1.0
<b>Total Operating Budget</b>		<b>2,073.4</b>	<b>(6.5)</b>	<b>2.5</b>	<b>2.0</b>	<b>7.5</b>	<b>3.5</b>	<b>3.0</b>	<b>0.0</b>	<b>0.0</b>	<b>1.7</b>	<b>5.0</b>	<b>2,092.1</b>	<b>18.7</b>
101	Teachers	122.1	6.0								(1.5)		126.6	4.5
102	Administrative	4.6									(0.2)		4.4	(0.2)
113	Admin - Non-Certified	1.0											1.0	0.0
114	Clerical	5.3									(0.5)		4.8	(0.5)
115	Paraeducators	61.0									(1.0)		60.0	(1.0)
117	Other												0.0	
<b>Total Grants Budget</b>		<b>194.0</b>	<b>6.0</b>	<b>0.0</b>	<b>0.0</b>	<b>0.0</b>	<b>0.0</b>	<b>0.0</b>	<b>0.0</b>	<b>0.0</b>	<b>(3.2)</b>	<b>0.0</b>	<b>196.8</b>	<b>2.8</b>
<b>Total System Budget</b>		<b>2,267.4</b>	<b>(0.5)</b>	<b>2.5</b>	<b>2.0</b>	<b>7.5</b>	<b>3.5</b>	<b>3.0</b>	<b>0.0</b>	<b>0.0</b>	<b>(1.5)</b>	<b>5.0</b>	<b>2,288.9</b>	<b>21.5</b>

**Stamford Public Schools  
2018-19 Position Budget Additions/Reductions ( )**

**Superintendent's Recommended Budget - January 12, 2018**  
**Board of Education 2018-19 Approved Budget - February 13, 2018**  
**Final Budget**

<b>No.</b>	<b>Object</b>	<b>Operating Budget</b>	<b>Grant Budget</b>	<b>Total Budget</b>
<b>101</b>	Teachers - adjusted budget 2017-18	<b>1,367.6</b>	<b>122.1</b>	<b>1,489.7</b>
	<b>Elementary Teachers based on enrollment</b> - Davenport -1, Hart +1, KT Murphy -1, Newfield -1, Northeast +1, Roxbury -2, Stillmeadow -1, Westover -1	<b>(5.0)</b>		<b>(5.0)</b>
	<b>Kindergarten Teachers based on enrollment</b> - Davenport +.5, Springdale -1	<b>(0.5)</b>		<b>(0.5)</b>
	<b>Contingencies for elementary enrollment</b>	<b>3.0</b>		<b>3.0</b>
	<b>Strawberry Hill</b> -- an expansion of Rogers International School - Add Grade 3 (+ 6 Grant Funded positions)		<b>6.0</b>	<b>6.0</b>
	<b>Middle School Teachers based on enrollment</b> - Cloonan +3, Dolan +2.5, Turn of River +1, Scofield -5	<b>1.5</b>		<b>1.5</b>
	<b>High School Teachers based on enrollment</b> - English Coach SHS, English Coach Westhill	<b>2.0</b>		<b>2.0</b>
	<b>Special Education Teachers</b> - add 6.5 Special Education plus 2 Speech & Language	<b>8.5</b>		<b>8.5</b>
	Add <b>Bilingual/EL positions</b> at Turn of River 1.0, Stamford High .5, Westhill .5, Contingency 1.0	<b>3.0</b>		<b>3.0</b>
	<b>Reduction in Title II grant</b>		<b>(0.5)</b>	<b>(0.5)</b>
	<b>Change High School Athletic Directors</b> to Administrator Positions	<b>(2.0)</b>		<b>(2.0)</b>
	<b>High School Class Size - Contingency SHS</b>	<b>1.0</b>		<b>1.0</b>
	<b>Guidance Counsellor - Rippowam</b>	<b>0.5</b>		<b>0.5</b>
	<b>Psychology at Cloonan .5, Rippowam .5</b>	<b>1.0</b>		<b>1.0</b>
	<b>Special Education Contingency</b>	<b>1.0</b>		<b>1.0</b>
	<b>Reallocate Title IIA position from Grant to Operating</b>	<b>1.0</b>	<b>(1.0)</b>	<b>-</b>
<b>Teacher Budget 2018-19</b>		<b>1,382.6</b>	<b>126.6</b>	<b>1,509.2</b>

**Stamford Public Schools  
2018-19 Position Budget Additions/Reductions ( )**

Superintendent's Recommended Budget - January 12, 2018  
 Board of Education 2018-19 Approved Budget - February 13, 2018  
 Final Budget

No.	Object	Operating Budget	Grant Budget	Total Budget
102	Administrator- adjusted budget 2017-18	61.4	4.6	66.0
	Add Athletic Directors at Stamford High and Westhill	2.0		2.0
	Grant reduction -Title I	0.2	(0.2)	0.0
<b>Administrative Budget 2018-19</b>		<b>63.6</b>	<b>4.4</b>	<b>68.0</b>
113	Administrative - Non-Certified - adjusted budget 2017-18	8.0	1.0	9.0
<b>Admin Non-Cert. Budget 2018-19</b>		<b>8.0</b>	<b>1.0</b>	<b>9.0</b>
114	Clerical- adjusted budget 2017-18	79.9	5.3	85.2
	Reclass OSS from grants to operating budget	0.5	(0.5)	0.0
<b>Clerical Budget 2018-19</b>		<b>80.4</b>	<b>4.8</b>	<b>85.2</b>
115	<b>Paraeducators- adjusted budget 2017-18</b>	<b>364.0</b>	<b>61.0</b>	<b>425.0</b>
	Add Bilingual para due to grant reduction	1.0	(1.0)	0.0
	Reduce elementary Kindergarten para	(1.0)		(1.0)
	Reduce high school media paras (Stamford High -1, Westhill -1)	(2.0)		(2.0)
	Restore high school media paras (Stamford High -1, Westhill -1)	2.0		2.0
<b>Paraeducators Budget 2018-19</b>		<b>364.0</b>	<b>60.0</b>	<b>424.0</b>
116	<b>Custodial/Mechanics- adjusted budget 2017-18</b>	<b>153.0</b>		<b>153.0</b>
<b>Custodial/Mechanic Budget 2017-18</b>		<b>153.0</b>	<b>0.0</b>	<b>153.0</b>
117	Other- adjusted budget 2017-18	39.5		39.5
	Add Security Guard at Scofield	1.0		1.0
<b>Other Budget 2018-19</b>		<b>40.5</b>	<b>0.0</b>	<b>40.5</b>
<b>Total BOE Budget 2018-19</b>		<b>2,092.1</b>	<b>196.8</b>	<b>2,288.9</b>
<b>Changes from 2018-19 Budget</b>		<b>18.7</b>	<b>2.8</b>	<b>21.5</b>