

Student Enrollment



Bethany Welliver, Grade 12
Westhill High School

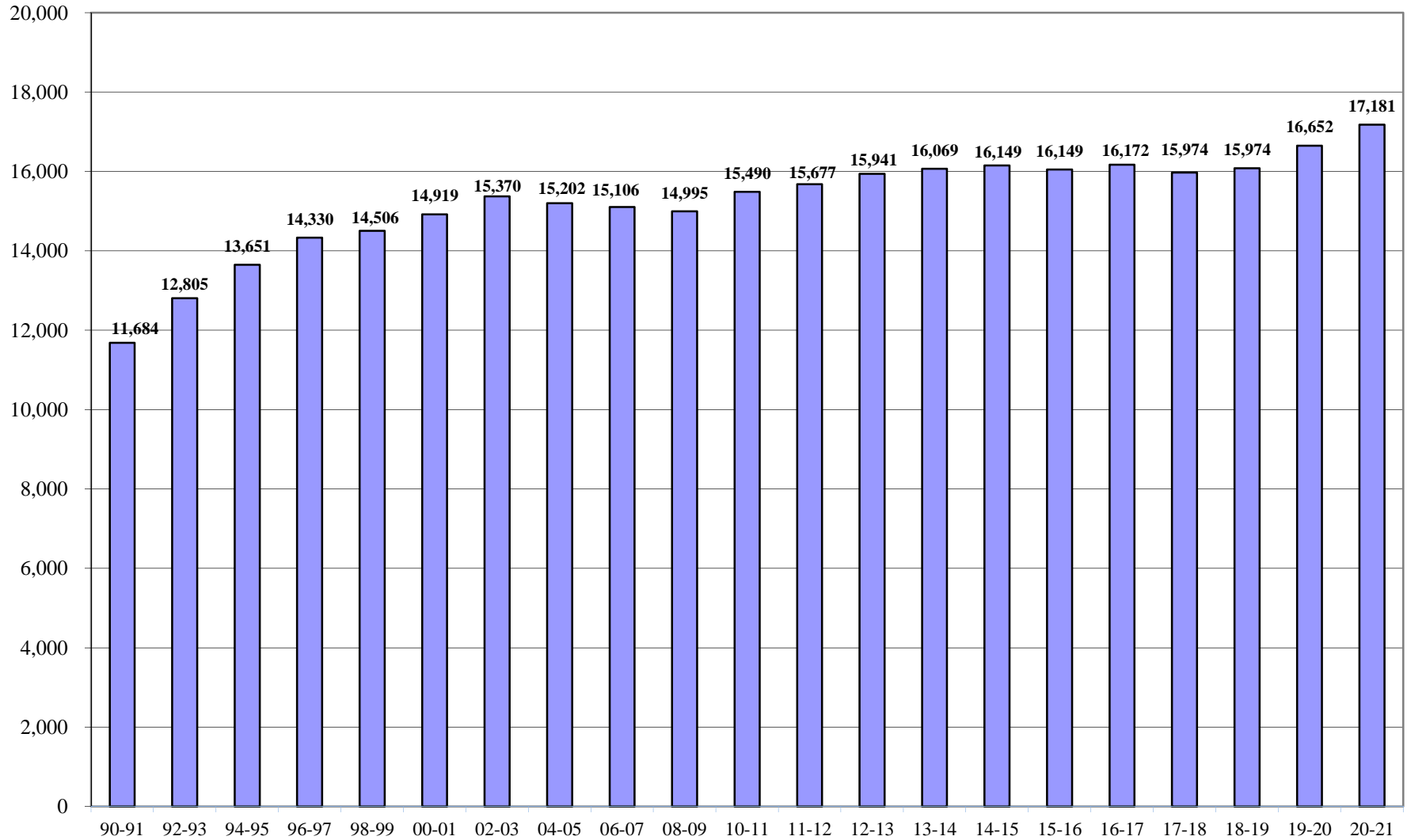


Leah Swan, Grade 12
Stamford High School



Jocelyn Findeisen, Grade 2
Stillmeadow Elementary School

Stamford Public Schools
Enrollment Actual for 1990 - 2019 and Projected Enrollment for 2020-21
Grades PreK - 12



Actual

- Notes:**
1. All enrollment data (actual and projected) are as of October 1st.
 2. All enrollment data (actual and projected) include students placed outside the district.
 3. All actual enrollment data include out-of-town students at Rogers, Strawberry Hill, AITE and the Vocational Agriculture Program at Westhill High School.
 4. Projections for 2020-21 are from the Research Office.
 5. *In addition to the 177 Out-of-District students there are approximately 95 students placed by State Agencies or the result of legal settlements that are the financial responsibility of Stamford Public Schools.

2020-21 BUDGET OF THE STAMFORD PUBLIC SCHOOLS

Total Enrollment by Level: Actual 2015-16 to 2019-20 and Projected 2020-21

	Actual 2015-16	Actual 2016-17	Actual 2017-18	Actual 2018-19	Actual 2019-20	Projected 2020-21	Change Actual 2019-20 to Projected 2020-21
Elementary School	7,691	7,828	7,721	7,526	7,659	7,728	69
Middle School	3,407	3,283	3,396	3,550	3,770	3,869	99
High School	4,496	4,568	4,398	4,506	4,682	5,054	372
Pre-Kindergarten	197	234	207	227	233	215	(18)
<hr/> Sub Total District <hr/>	15,791	15,913	15,722	15,809	16,344	16,866	522
Out-of-District Placement-*	144	170	162	177	186	177	(9)
Home Instruction/ARTS Program	88	67	63	73	103	120	17
Individuals Achieving Independence	23	22	27	23	19	18	(1)
<hr/> Total School Enrollment <hr/>	16,046	16,172	15,974	16,082	16,652	17,181	529

Notes:

1. Enrollment at the elementary, middle, and high school levels include Special Education and Bilingual Program students, but do not include Anchor program or students placed outside the district. Anchor program and out-of-district students are noted separately.

*Out-of District Placements does not include placements due to Legal Settlements

2020-21 BUDGET OF THE STAMFORD PUBLIC SCHOOLS

Elementary Enrollment by School: Actual 2015-16 to 2019-20 and Projected 2020-21

	Actual 2015-16	Actual 2016-17	Actual 2017-18	Actual 2018-19	Actual 2019-20	Projected 2020-21	Change Actual 2019-20 to Projected 2020-21
Davenport	646	650	625	620	632	622	(10)
Hart	630	641	629	609	604	595	(9)
K. T. Murphy	549	537	547	499	482	477	(5)
Newfield	625	614	569	522	554	553	(1)
Northeast	637	641	658	616	653	649	(4)
Rogers	546	558	552	542	560	556	(4)
Roxbury	623	601	590	569	603	606	3
Springdale	652	642	614	572	558	558	0
Stark	611	601	602	594	567	575	8
Stillmeadow	694	717	655	632	652	636	(16)
Strawberry Hill		229	350	431	523	622	99
Toquam	705	678	648	637	665	659	(6)
Westover	773	719	682	683	606	620	14
Sub Total	7,691	7,828	7,721	7,526	7,659	7,728	69
Pre-Kindergarten Anchor	197	234	207	227	233	215	(18)
Total Elementary	7,888	8,062	7,928	7,753	7,892	7,943	51

Notes:

1. Special Education and Bilingual Program students are counted in their schools.
2. The estimated 260 sixth, seventh and eighth graders at Rogers are included in middle school counts, not in the elementary counts.
3. Enrollment at Rogers and Strawberry Hill includes out-of-town students

Middle School Enrollment by School: Actual 2015-16 to 2019-20 and Projected 2020-21

	Actual 2015-16	Actual 2016-17	Actual 2017-18	Actual 2018-19	Actual 2019-20	Projected 2020-21	Change Actual 2018-19 to Projected 2019-20
Cloonan	543	537	570	632	712	727	15
Dolan	497	481	532	601	660	652	(8)
Turn of River	590	624	635	652	685	689	4
Scofield	716	675	672	646	645	679	34
Rippowam	804	705	727	752	787	830	43
Rogers	257	261	260	267	281	292	11
Sub Total	3,407	3,283	3,396	3,550	3,770	3,869	99
Anchor Program	0	0	0	0	12	36	24
Total Middle	3,407	3,283	3,396	3,550	3,782	3,905	123

Notes:

1. Enrollment at Rogers includes out-of-town students

2020-21 BUDGET OF THE STAMFORD PUBLIC SCHOOLS

High School Enrollment By School: Actual 2015-16 to 2019-20 and Projected 2020-21

	Actual 2015-16	Actual 2016-17	Actual 2017-18	Actual 2018-19	Actual 2019-20	Projected 2020-21	Change Actual 2019-20 to Projected 2020-21
Stamford	1,720	1,765	1,689	1,740	1,812	1,950	138
Westhill	2,090	2,136	2,058	2,128	2,241	2,452	211
AITE	686	667	651	638	629	652	23
Subtotal High School	4,496	4,568	4,398	4,506	4,682	5,054	372
Anchor Program	88	67	63	73	91	84	(7)
Individuals Achieving Independence	23	22	27	23	19	18	(1)
Total High School	4,607	4,657	4,488	4,602	4,792	5,156	364

Notes:

1. Enrollment at AITE and the Westhill Vocational Agriculture Program includes out-of-town students.