

SPEECH SOUNDS

GIRLS

3

y f

3 1/2

b sh s ch

4

l j z

2 1/2

p ng w
t d k

2

m n h g

6

r v

7 1/2

th

This indicates the approximate ages at which 75% of girls develop correct production of sounds in words, with children accumulating the sounds as they grow. There is variation between children. Many sounds are heard earlier than what is indicated however they are typically produced in an adult-like manner at the above ages.



SPEECH SOUNDS

BOYS

3

p b h
w k g

3 1/2

y t f l j
sh ch

4

s z

2 1/2

ng d

2

m n

6

r v

7 1/2

th

This indicates the approximate ages at which 75% of boys develop correct production of sounds in words, with children accumulating the sounds as they grow. There is variation between children. Many sounds are heard earlier than what is indicated however they are typically produced in an adult-like manner at the above ages.



CONSONANT CLUSTERS

Consonant clusters are where there are two consonants next to each other in a word e.g. *sp, pr*

2;6
pw
bw

3;0
bl st
sp pl

3;6
tw
kw

4;0
sk sm sn kl
gl sw fl skw

5;0
br dr pr tr
kr gr fr str

6;0
spl

7;0
spr skr
thr

In order to say a consonant cluster, they must be able to say the individual speech sounds.

theSpeel.com

Obtained from McLeod, 2003

INTELLIGIBILITY

Intelligibility refers to how much you understand of what the child is saying. It is usually judged as a percentage.

2 years old: 26-50%

2½ years old: 51-70%

3 years old: 71-80%

4 years old: 93%

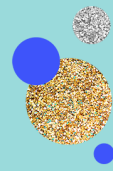
5 year olds

should be

100%

intelligible

TYPICAL ERRORS



The **SPEEL**
SPEECH & LANGUAGE

MANY CHILDREN MAKE ERRORS WHICH ARE CONSIDERED TYPICAL

To Speech Pathologists these are called Phonological Processes.

If you see these particular errors at the ages indicated then monitor these to ensure they go away. If you see errors not listed below or at an age when they should be gone, seek Speech Pathology advice.

1-2 years old

Deleting the last sound of words
Difficulty with consonant clusters.

*/k/ and /g/ change to /t/ and /d/
/s/ changes to /t/
/l/ and /r/ change to /w/*

2-3 years old

Difficulty with consonant clusters.

*/k/ and /g/ change to /t/ and /d/
/sh/ changes to /s/
/s/ changes to /t/
/th/ changes to /d/
/l/ and /r/ change to /w/*

3-4 years old

*/sh/ changes to /s/
/ch/ changes to /t/
/th/ changes to /d/ or /f/
/l/ and /r/ change to /w/*

4-5 years old

*/th/ changes to /d/ or /f/
/l/ and /r/ change to /w/*

**At 5 years,
there should
be minimal
errors seen**