

The background is a semi-transparent, reddish-brown map of a residential neighborhood. A circular area on the left side of the map is highlighted with a darker shade, indicating a specific school zone. Within this highlighted area, the text 'PR NORTHWIND ELEMENTARY SCHOOL' and 'CH-13195AG' is visible. Other street names like 'ROANOK', 'LAKEVIEW', 'GRANGER', and 'HUGHES' are scattered across the map. The overall aesthetic is clean and professional, typical of a public utility or school district announcement.

# Attendance Boundary Adjustment

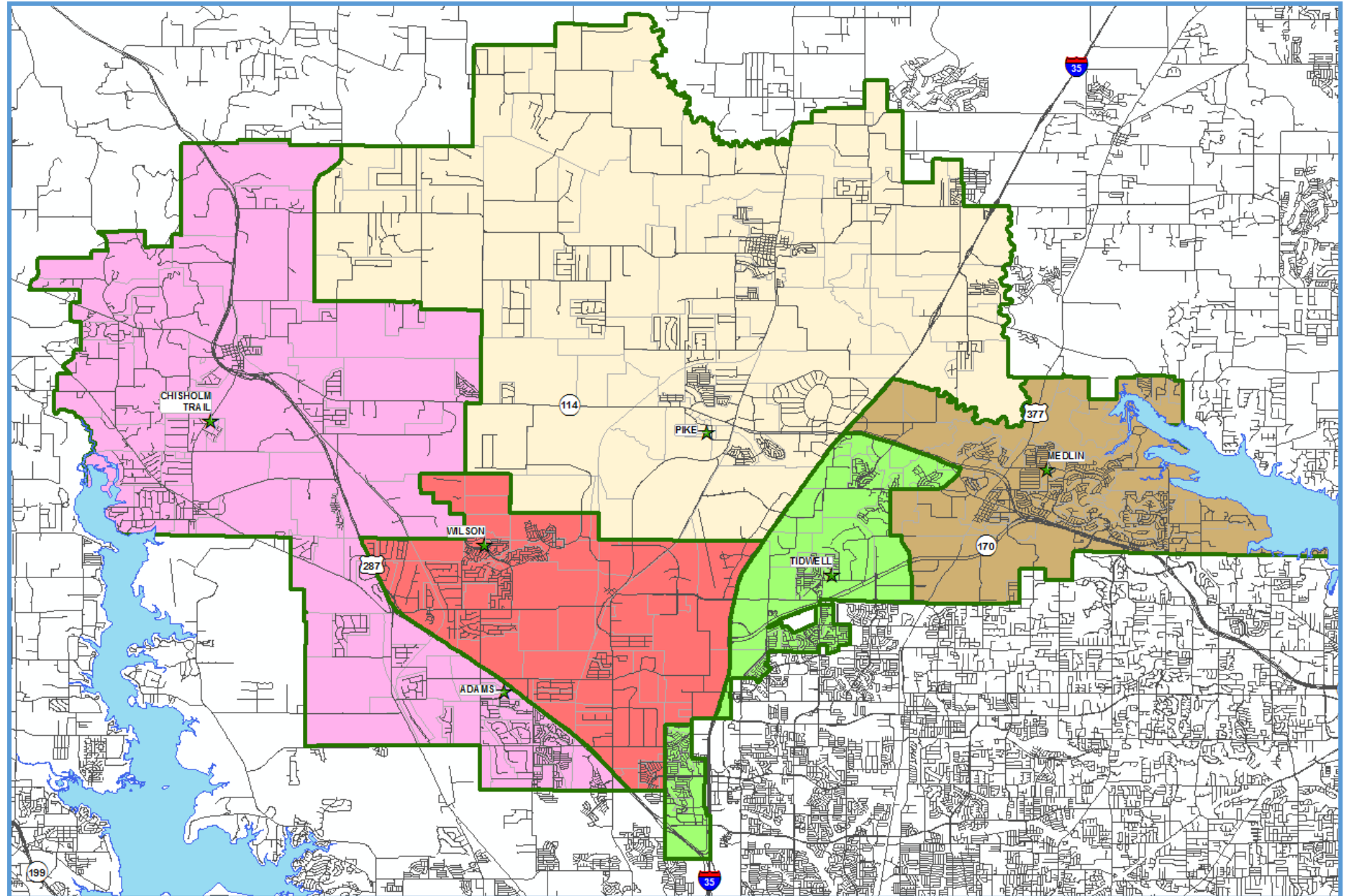
June 13, 2022

# Attendance Boundaries

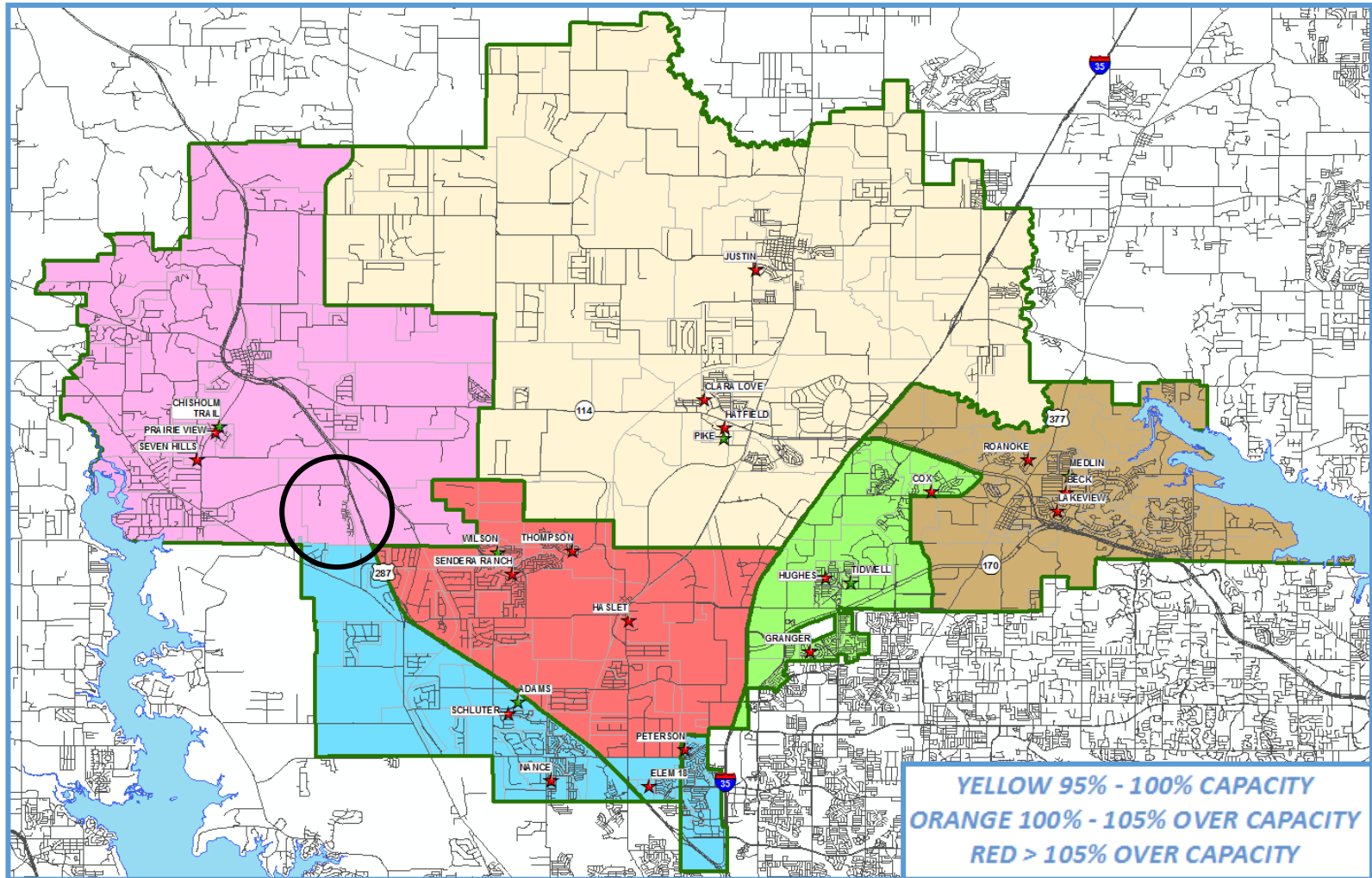
## Guiding Growth Strategies

- Prevent Campus Overcrowding
- Minimize Future Boundary Changes and its Impact on Students
- Maintain Student/Teacher Ratios
- Improve Efficiency of Schools

# 2017-18 Middle School Attendance Zones



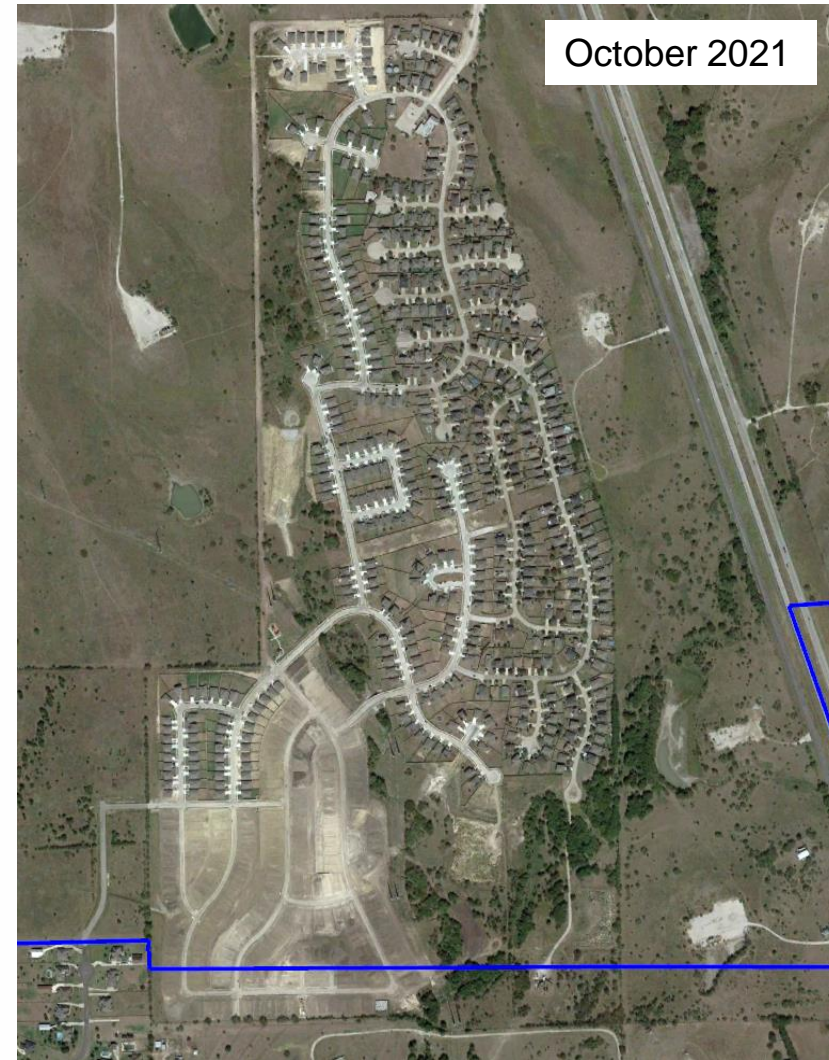
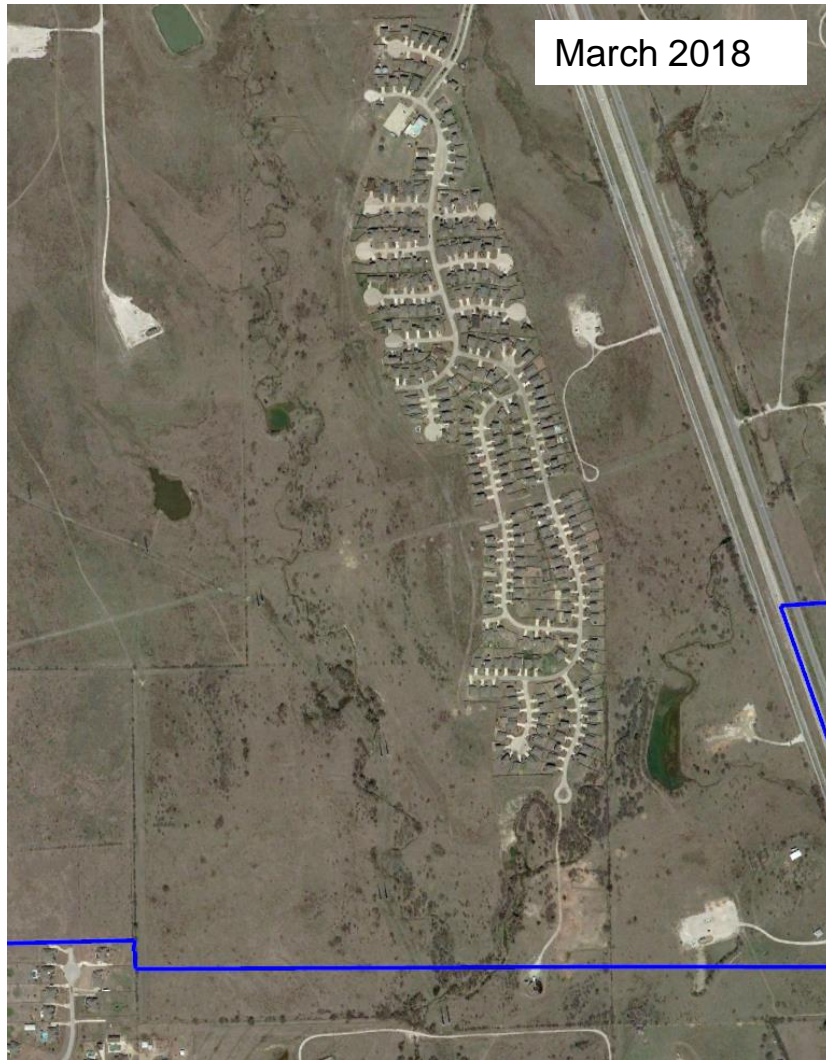
# 2018-19 Approved Attendance Zone



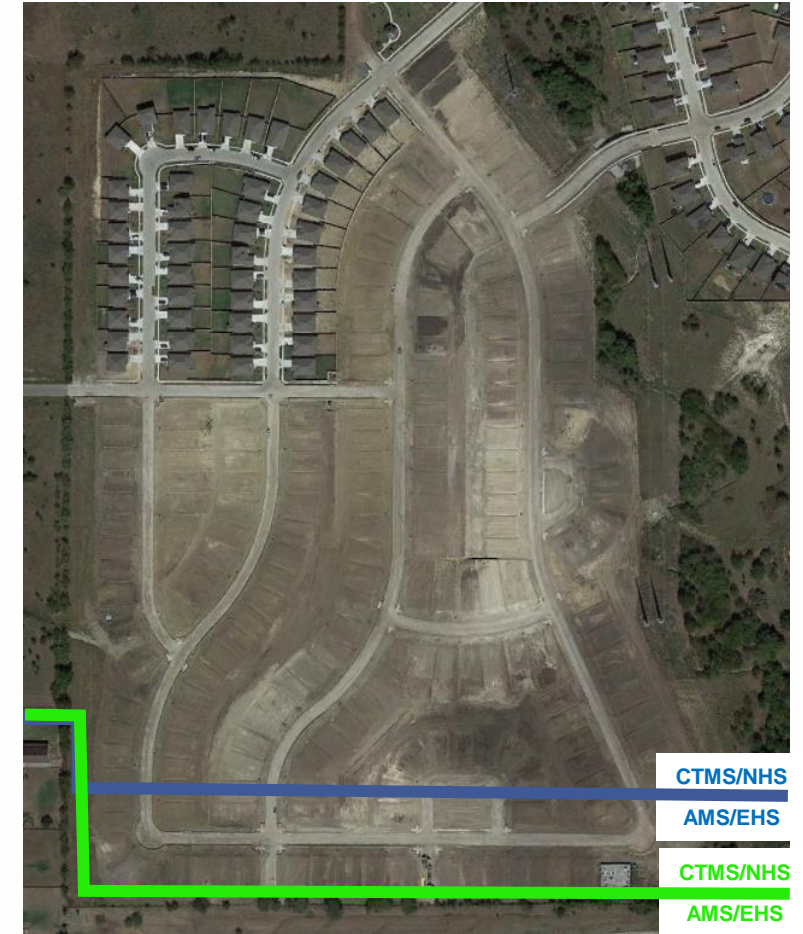
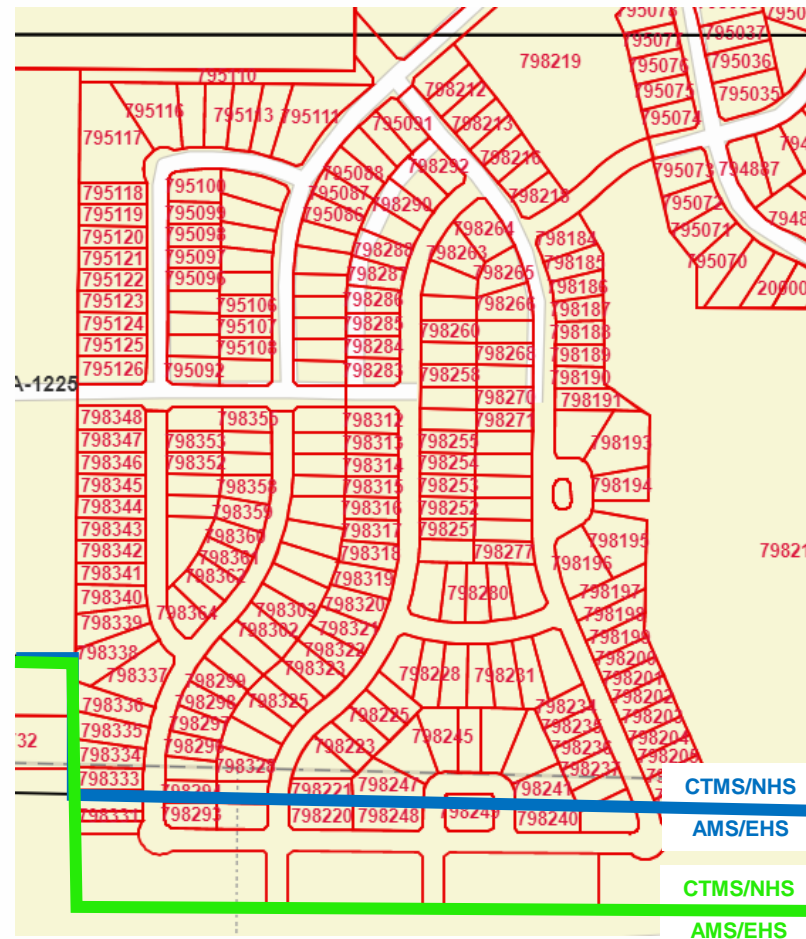
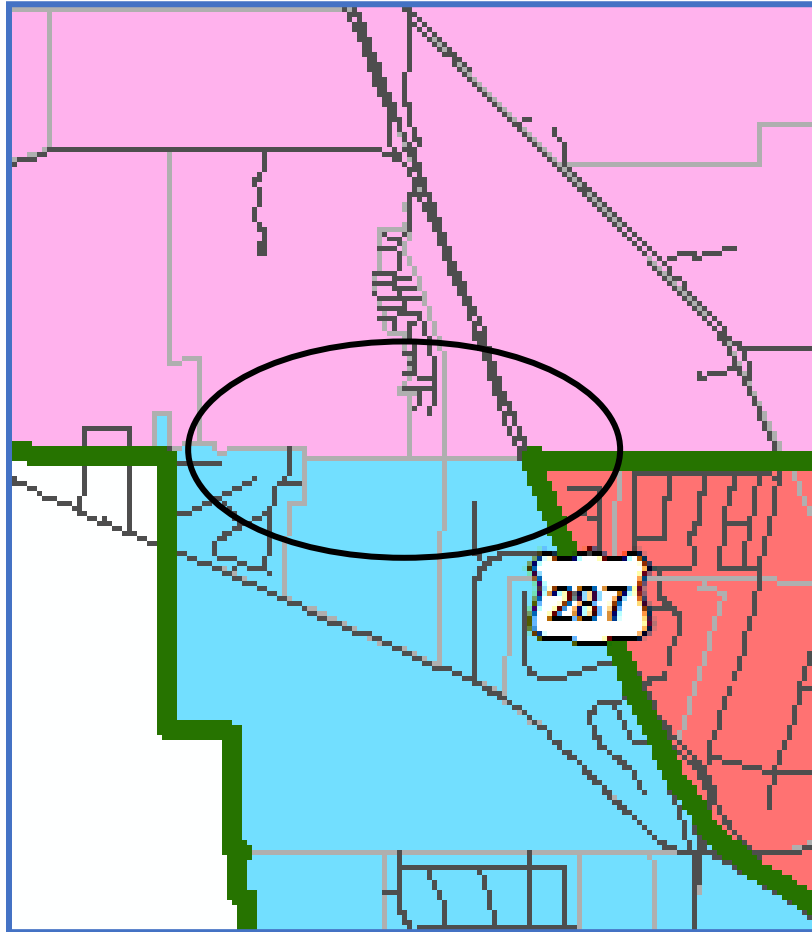
MID_PLAN1	2018/19	2019/20	2020/21	2021/22	2022/23	2023/24	2024/25	2025/26	2026/27	2027/28
ADAMS	1,097	1,216	1,367	1,455	1,539	1,622	1,729	1,828	1,894	1,938
CHISHOLM TRAIL	450	428	434	427	677	749	789	872	907	1,018
MEDLIN	1,157	1,201	1,233	1,184	1,188	1,224	1,280	1,329	1,332	1,354
PIKE	1,013	1,063	1,124	1,196	1,276	1,365	1,480	1,588	1,713	1,818
TIDWELL	972	1,050	1,102	1,167	1,217	1,297	1,361	1,437	1,464	1,482
WILSON	997	1,057	1,101	1,146	1,221	1,334	1,437	1,514	1,598	1,694



# Chisholm Springs Development 2018 to 2021



# Adjustment to the Southern Boundary of Chisholm Springs Development for Secondary Attendance Boundaries





# Discussion