



## Minnetonka Public Schools Total Special Education System (TSES)

This document serves as the Total Special Education System Plan for Minnetonka Public Schools in accordance with Minnesota Rule 3525.1100. This plan also includes an assurance for compliance with the federal requirements pertaining to districts' special education responsibilities found in United States Code, title 20, chapter 33, sections 1400 et seq., and Code of Federal Regulations, title 34, part 300. This document is a companion to the Application for Special Education Funds – Statement of Assurances (ED-01350-29).

Christine Breen, Minnetonka Public Schools Executive Director of Special Education, is responsible for program development, coordination, and evaluation; in-service training; and general special education supervision and administration. Christine Breen may be reached at 952-401 -5036.

### I. Child Study Procedures

The district's identification system is developed according to the requirement of nondiscrimination as Minnetonka Public Schools does not discriminate in education on the basis of race, color, creed, religion, national origin, sex, age, marital status, status with regard to public assistance, sexual orientation, or disability.

#### A. Identification

Minnetonka Public Schools has developed systems designed to identify pupils with disabilities beginning at birth, pupils with disabilities attending public and nonpublic schools, and pupils with disabilities who are of school age and are not attending any school.

Infant and toddler intervention services under United States Code, title 20, chapter 33, section 1431 et seq., and Code of Federal Regulations, title 34, part 303, are available in Minnetonka Schools to children from birth through two years of age who meet the outlined criteria.

The team determines that a child from birth through the age of two years is eligible for infant and toddler intervention services if:

- A. The child meets the criteria of one of the disability categories in United States Code, title 20, chapter 33, as defined in Minnesota Rules; or
- B. The child meets one of the criteria for developmental delay in subitem (1), (2), or (3):
  - (1) The child has a diagnosed physical or mental condition or disorder that has a high probability of resulting in developmental delay regardless of whether the child has a demonstrated need or delay; or
  - (2) The child is experiencing a developmental delay that is demonstrated by a score of 1.5 standard deviations or more below the mean, as measured by the appropriate diagnostic measures and procedures, in one or more of the following areas:
    - (a) Cognitive development;

- (b) Physical development, including vision and hearing;
  - (c) Communication development;
  - (d) Social or emotional development; and
  - (e) Adaptive development.
- (3) The child's eligibility is established through the application of informed clinical opinion. Informed clinical opinion may be used as an independent basis to establish a child's eligibility under this part even when other instruments do not establish eligibility; however, in no event may informed clinical opinion be used to negate the results of evaluation instruments to establish eligibility.

The team shall determine that a child from the age of three years through the age of six years is eligible for special education when:

- A. The child meets the criteria of one of the categorical disabilities in United States Code, title 20, chapter 33, as defined in Minnesota Rules; or
- B. The child meets one of the criteria for developmental delay in subitem (1) and the criteria in subitem (2). Minnetonka Schools has elected the option of implementing these criteria for developmental delay.

(1) The child:

- (a) Has a diagnosed physical or mental condition or disorder that has a high probability of resulting in developmental delay; or*
- (b) Has a delay in each of two or more of the areas of cognitive development; physical development, including vision and hearing; communication development; social or emotional development; and adaptive development, that is verified by an evaluation using one or more technically adequate, norm-referenced instruments. The instruments must be individually administered by appropriately trained professionals and the scores must be at least 1.5 standard deviations below the mean in each area.*

(2) The child's need for special education is supported by:

- (a) At least one documented, systematic observation in the child's routine setting by an appropriate professional or, if observation in the daily routine setting is not possible, the alternative setting must be justified;*
- (b) A developmental history; and*
- (c) At least one other evaluation procedure in each area of identified delay that is conducted on a different day than the medical or norm-referenced evaluation; which may include criterion references instruments, language samples, or curriculum-based measures.*

Minnetonka Public Schools plan for identifying a child with a specific learning disability is consistent with Minnesota Rule 3525.1341 criteria A, B, and C. Minnetonka Public Schools solely uses the severe discrepancy model to determine eligibility for special education services for a specific learning disability.

**B. Evaluation**

Evaluation of the child and assessment of the child and family will be conducted in a manner consistent with Code of Federal Regulations, title 34, section 303.321.

A. *General.* (1) The lead agency must ensure that, subject to obtaining parental consent in accordance with §303.420(a)(2), each child under the age of three who is referred for evaluation or early intervention services under this part and suspected of having a disability, receives—

- (i) A timely, comprehensive, multidisciplinary evaluation of the child in accordance with paragraph (b) of this section unless eligibility is established under paragraph (a)(3)(i) of this section; and
- (ii) If the child is determined eligible as an infant or toddler with a disability as defined in §303.21;
  - (A) A multidisciplinary assessment of the unique strengths and needs of that infant or toddler and the identification of services appropriate to meet those needs;
  - (B) A family-directed assessment of the resources, priorities, and concerns of the family and the identification of the supports and services necessary to enhance the family's capacity to meet the developmental needs of that infant or toddler. The assessments of the child and family are described in paragraph (c) of this section and these assessments may occur simultaneously with the evaluation, provided that the requirements of paragraph (b) of this section are met.

(2) As used in this part—

- (i) *Evaluation* means the procedures used by qualified personnel to determine a child's initial and continuing eligibility under this part, consistent with the definition of *infant or toddler with a disability* in §303.21. An *initial evaluation* refers to the child's evaluation to determine his or her initial eligibility under this part;
- (ii) *Assessment* means the ongoing procedures used by qualified personnel to identify the child's unique strengths and needs and the early intervention services appropriate to meet those needs throughout the period of the child's eligibility under this part and includes the assessment of the child, consistent with paragraph (c)(1) of this section and the assessment of the child's family, consistent with paragraph (c)(2) of this section; and
- (iii) *Initial assessment* refers to the assessment of the child and the family assessment conducted prior to the child's first IFSP meeting.

(3)(i) A child's medical and other records may be used to establish eligibility (without conducting an evaluation of the child) under this part if those records indicate that the child's level of functioning in one or more of the developmental areas identified in §303.21(a)(1) constitutes a developmental delay or that the child otherwise meets the criteria for an infant or toddler with a disability under §303.21. If the child's part C eligibility is established under this paragraph, the lead agency or EIS provider must conduct assessments of the child and family in accordance with paragraph (c) of this section.

(ii) Qualified personnel must use informed clinical opinion when conducting an evaluation and assessment of the child. In addition, the lead agency must ensure that informed clinical opinion may be used as an independent basis to establish a child's eligibility under this part even when other instruments do not establish eligibility; however, in no event may informed clinical opinion be used to negate the results of evaluation instruments used to establish eligibility under paragraph (b) of this

section.

- (4) All evaluations and assessments of the child and family must be conducted by qualified personnel, in a nondiscriminatory manner, and selected and administered so as not to be racially or culturally discriminatory.
  - (5) Unless clearly not feasible to do so, all evaluations and assessments of a child must be conducted in the native language of the child, in accordance with the definition of *native language* in §303.25.
  - (6) Unless clearly not feasible to do so, family assessments must be conducted in the native language of the family members being assessed, in accordance with the definition of *native language* in §303.25.
- B. Procedures for evaluation of the child. In conducting an evaluation, no single procedure may be used as the sole criterion for determining a child's eligibility under this part. Procedures must include—
- (1) Administering an evaluation instrument;
  - (2) Taking the child's history (including interviewing the parent);
  - (3) Identifying the child's level of functioning in each of the developmental areas in §303.21(a)(1);
  - (4) Gathering information from other sources such as family members, other care-givers, medical providers, social workers, and educators, if necessary, to understand the full scope of the child's unique strengths and needs; and
  - (5) Reviewing medical, educational, or other records.
- C. Procedures for assessment of the child and family.
- (1) An assessment of each infant or toddler with a disability must be conducted by qualified personnel in order to identify the child's unique strengths and needs and the early intervention services appropriate to meet those needs. The assessment of the child must include the following:
    - (i) A review of the results of the evaluation conducted by paragraph (b) of this section;
    - (ii) Personal observations of the child; and
    - (iii) The identification of the child's needs in each of the developmental areas in §303.21(a)(1).
  - (2) A family-directed assessment must be conducted by qualified personnel in order to identify the family's resources, priorities, and concerns and the supports and services necessary to enhance the family's capacity to meet the developmental needs of the family's infant or toddler with a disability. The family-directed assessment must –
    - (i) Be voluntary on the part of each family member participating in the assessment;
    - (ii) Be based on information obtained through an assessment tool and also through an interview with those family members who elect to participate in the assessment; and
    - (iii) Include the family's description of its resources, priorities, and concerns related to enhancing the child's development.

The team conducts an evaluation for special education purposes within a reasonable time not to exceed 30 school days from the date the district receives parental permission to conduct the evaluation or the expiration of the 14-calendar day parental response time in cases other than initial evaluation, unless a conciliation conference or hearing is requested.

Minnetonka Schools conducts full and individual initial evaluation before the initial provision of special education and related services to a pupil. The initial evaluation consists of procedures to determine whether a child is a pupil with a disability that adversely affects the child's educational performance as defined in Minnesota Statutes, section 125A.02, who by reason thereof needs special education and related services, and to determine the educational needs of the pupil. The district proposing to conduct an initial evaluation to determine if the child qualifies as a pupil with a disability obtains informed consent from the parent of the child before the evaluation is conducted. Parental consent for evaluation is not construed as consent for placement for receipt of special education and related services. The District will not override the written refusal of a parent to consent to an initial evaluation or re-evaluation.

### ***Evaluation Procedures***

Evaluations and reevaluations shall be conducted according to the following procedures:

- A. Minnetonka Public Schools shall provide notice to the parents of the pupil, according to Code of Federal Regulations, title 34, sections 300.500 to 300.505, that describes any evaluation procedures the district proposes to conduct.
- B. In conducting the evaluation, Minnetonka Public Schools shall:
  - (1) Uses a variety of evaluation tools and strategies to gather relevant functional and developmental information, including information provided by the parent, that are designed to assist in determining whether the child is a pupil with a disability and the content of the pupil's individualized education program, including information related to enabling the pupil to be involved in and profess in the general curriculum, or for preschool pupils, to participate in appropriate activities;
  - (2) Does not use any single procedure as the sole criterion for determining whether a child is a pupil with a disability or determining an appropriate education program for the pupil; and
  - (3) Uses technically sound instruments that are designed to assess the relative contribution of cognitive and behavioral factors, in addition to physical or developmental factors.
- C. Minnetonka Public Schools ensures that:
  - (1) Tests and other evaluation materials used to evaluate a child under this part are selected and administered so as not be discriminatory on a racial or cultural basis, and are provided and administered in the pupil's native language or other mode of communication, unless it is clearly not feasible to do so;
  - (2) Materials and procedures used to evaluate a child with limited English proficiency are selected and administered to ensure that they measure the extent to which the child has a disability and needs special education and related services, rather than measure the child's English language skills;
  - (3) Any standardized tests that are given to the child have been validated for the specific purpose for which they are used, are administered by trained and knowledgeable personnel, and are administered in accordance with any instructions provided by the producer of such tests;
  - (4) The child is evaluated in all areas of suspected disability, including, if appropriate, health, vision, hearing, social and emotional status, general intelligence, academic performance, communicative

status, and motor abilities;

- (5) Evaluation tools and strategies that provide relevant information that directly assists persons in determining the educational needs of the pupil are provided;
  - (6) If an evaluation is not conducted under standard conditions, a description of the extent to which it varied from standard conditions must be included in the evaluation report;
  - (7) Tests and other evaluation materials include those tailored to evaluate specific areas of educational need and not merely those that are designed to provide a single general intelligence quotient;
  - (8) Tests are selected and administered so as best to ensure that if a test is administered to a child with impaired sensory, manual, or speaking skills, the test results accurately reflect the child's aptitude or achievement level or whatever other factors the test purports to measure, rather than reflecting the child's impaired sensory, manual, or speaking skills, unless those skills are the factors that the test purports to measure; and
  - (9) In evaluating each pupil with a disability, the evaluation is sufficiently comprehensive to identify all of the pupil's special education and related service needs, whether or not commonly linked to the disability category in which the pupil has been classified.
- D. Upon completion of administration of tests and other evaluation materials, the determination of whether the child is a pupil with a disability as defined in Minnesota Statutes, section 125A.02, shall be made by a team of qualified professionals and the parent of the pupil in accordance with item E, and a copy of the evaluation report and the documentation of determination of eligibility will be given to the parent.
- E. In making a determination of eligibility under item D, a child shall not be determined to be a pupil with a disability if the determinant factor for such determination is lack of instruction in reading or math or limited English proficiency, and the child does not otherwise meet eligibility criteria under parts 3525.1325 to 3525.1351.

#### **Additional requirements for evaluations and reevaluations**

- A. As part of an initial evaluation, if appropriate, and as part of any reevaluation under this part, or a reinstatement under part 3525.3100, the IEP team and other qualified professionals, as appropriate, shall:
- (1) Review existing evaluation data on the pupil, including evaluations and information provided by the parents of the pupil, current classroom-based assessments and observations, and teacher and related services providers observation; and
  - (2) On the basis of the review, and input from the pupil's parents, identify what additional data, if any, are needed to determine whether the pupil has a particular category of disability, as described in Minnesota Statutes, section 125A.02, or, in case of a reevaluation of a pupil, whether the pupil continues to have such a disability, the present levels of performance and educational needs of the pupil, whether the pupil needs special education and related services, or in the case of a reevaluation of a pupil, whether the pupil continues to need special education and related services, and whether any additions or modifications to the special education and related services are needed to enable the pupil to meet the measurable annual goals set out in the individualized education program of the pupil and to participate, as appropriate, in the general curriculum.
- B. The district shall administer such tests and other evaluation materials as may be needed to produce the data identified by the IEP team under item A, subitem (2).
- C. The district shall obtain informed parental consent, in accordance with subpart 1, prior to conducting

any reevaluation of a pupil, except that such informed parental consent need not be obtained if the district can demonstrate that it had taken reasonable measures to obtain such consent and the pupil's parent has failed to respond.

- D. If the IEP team and other qualified professionals, as appropriate, determine that no additional data are needed to determine whether the pupil continues to be a pupil with a disability, the district shall notify the pupil's parents of that determination and the reasons for it, and the right of such parents to request an evaluation to determine whether the pupil continues to be a pupil with a disability, and shall not be required to conduct such an evaluation unless requested to by the pupil's parents.
- E. A district shall evaluate a pupil in accordance with this part before determining that the pupil is no longer a pupil with a disability.

The district intends to use restrictive procedures. See the attached Restrictive Procedure Plan. The district follows the restrictive procedure statute, Minnesota Statute 125A.094-125A.0942.

### **Procedures for determining eligibility and placement**

- A. In interpreting the evaluation data for the purpose of determining if a child is a pupil with a disability under parts 3525.1325 to 3525.1351 and the educational needs of the child, the school district:
  - (1) Draws upon information from a variety of sources, including aptitude and achievement tests, parent input, teacher recommendations, physical condition, social or cultural background, and adaptive behavior; and
  - (2) Ensures that the information obtained from all of the sources is documented and carefully considered.
- B. If a determination is made that a child is a pupil with a disability who needs special education and related services, an IEP must be developed for the pupil according to part 3525.2810.

### **Evaluation report**

An evaluation report must be completed and delivered to the pupil's parents within the specified evaluation timeline. At a minimum, the evaluation report must include:

- A. A summary of all evaluation results;
- B. Documentation of whether the pupil has a particular category of disability or, in the case of a reevaluation, whether the pupil continues to have such a disability;
- C. The pupil's present levels of performance and educational needs that derive from the disability;
- D. Whether the child needs special education and related services or, in the case of a reevaluation, whether the pupil continues to need special education and related services; and
- E. Whether any additions or modifications to the special education and related services are needed to enable the pupil to meet the measurable annual goals set out in the pupil's IEP and to participate, as appropriate, in the general curriculum.

### **C. Plan for Receiving Referrals**

Minnetonka Public Schools plan for receiving referrals from parents, physicians, private and public programs, and health and human services agencies is attached as **Appendix A**.

## **II. Method of Providing the Special Education Services for the Identified Pupils**

Minnetonka Public Schools provides a full range of educational service alternatives. All students with

disabilities are provided the special instruction and services which are appropriate to their needs. The following is representative of Minnetonka Public Schools method of providing the special education services for the identified pupils, sites available at which service may occur, and instruction and related services are available.

Appropriate program alternatives to meet the special education needs, goals, and objectives of a pupil are determined on an individual basis. Choice of specific program alternatives are based on the pupil's current levels of performance, pupil special education needs, goals, and objectives, and must be written in the IEP. Program alternatives are comprised of the type of services provided, the setting in which services occur, and the amount of time and frequency in which special education services occur. A pupil may receive special education services in more than one alternative based on the IEP or IFSP.

A. Method of providing the special education services for the identified pupils:

- (1) Direct Services
- (2) Indirect Services
- (3) Team Teaching
- (4) Instruction in Resource Room
- (5) Instruction in Self-Contained Program
- (6) Work-Based Services
- (7) Community-Based Services

B. Alternative sites available at which services may occur:

- (1) Clear Springs Elementary, 5701 County Road 101, Minnetonka, MN 55345  
Grades K-5 general education and special education services (Settings 1 and 2), DCD Program (Setting 3)
- (2) Deephaven Elementary, 4452 Vine Hill Road, Deephaven, MN 55391  
Grades K-5 general education and special education services (Settings 1 and 2)
- (3) Excelsior Elementary, 441 Oak Street, Excelsior, MN 55331  
Grades K-5 general education and special education services (Settings 1 and 2), DCD Program (Setting 3)
- (4) Groveland Elementary 17310 Minnetonka Blvd, Minnetonka, MN 55345  
Grades K-5 general education and special education services (Settings 1 and 2)
- (5) Minnewashta Elementary, 26350 Smithtown Road, Excelsior, MN 55331  
Grades K-5 general education and special education services (Settings 1 and 2), ASD Program (Setting 3)
- (6) Scenic Heights Elementary, 5650 Scenic Heights Drive, Minnetonka, MN 55345  
Grades K-5 general education and special education services (Settings 1 and 2), EBD Program (Setting 3)
- (7) Minnetonka Middle School East, 17000 Lake St. Ext., Minnetonka, MN 55345  
Grades 6-8 general education and special education services (Setting 1 and 2), EBD Program (Setting 3), DCD Program (Setting 3)



- (8) Minnetonka Middle School West, 6421 Hazeltine Blvd., Excelsior, MN 55331  
Grades 6-8 general education and special education services (Setting 1 and 2), ASD Program (Setting 3), DCD Program (Setting 3)
- (9) Minnetonka High School, 18301 West Highway 7, Minnetonka, MN 55345  
Grades 9-12 general education and special education services (Setting 1 and 2), ASD Program (Setting 3), EBD Program (Setting 3), DCD Program (Setting 3), Neurological Program (Setting 3)
- (10) Transition PLUS, 6715 Minnetonka Blvd, St. Louis Park, MN 55426  
Ages 18-21
- (11) Minnetonka Community Education Center, 4584 Vine Hill Road, Excelsior, MN 55331  
Early Childhood Special Education Classrooms, Community Based Early Childhood Programs, Home
- (12) St. Therese School, 18325 Minnetonka Blvd., Deephaven, MN 55391  
Grades K-8 general education and special education services (Setting 1)
- (13) SouthWest Metro Intermediate District 288. Programs, services, and locations can be accessed by clicking on the following link:  
<http://www.swmetro.k12.mn.us/page/2739> (Note: Minnetonka Public Schools is not a member district)

C. Available instruction and related services:

- (1) Direct Specialized Instruction
- (2) Consultation services
- (3) Speech/Language Therapy
- (4) Health services
- (5) Occupational Therapy
- (6) Physical Therapy
- (7) School Psychology Services
- (8) Educational Evaluation
- (9) Transportation
- (10) Deaf/Hard of Hearing Services
- (11) Vision Service
- (12) Adapted Physical Education
- (13) Social Work Services

### III. Administration and Management Plan.

Minnetonka Public Schools utilizes the following administration and management plan to assure effective and efficient results of child study procedures and method of providing special education services for the identified pupils:

A. The following table illustrates the organization of administration and management to assure effective and efficient results of child study procedures and method of providing special education services for the identified pupils:

<b>Staff Name and Title</b>	<b>Contact Information (phone/email/ mailing address/office location)</b>	<b>Brief Description of Staff Responsibilities relating to child study procedures and method of providing special education services</b>
Christine Breen Executive Director of Special Education	Phone: 952-401-5036  Email: <a href="mailto:christine.breen@minnetonka.schools.org">christine.breen@minnetonka.schools.org</a>  ISD 276 District Service Center 5621 Co. Rd. 101 Minnetonka, MN 55345	Develops, organizes, coordinates, implements, and evaluates areas related to special education. Aligns overall district leadership, coordination and supervision for staff involved in the creation and implementation of professional development process in all district special education programs.
Kristin Laughlin, Director of Special Education	Phone: 952-401-5045  Email: <a href="mailto:Kristin.Laughlin@minnetonka.schools.org">Kristin.Laughlin@minnetonka.schools.org</a>  ISD 276 District Service Center 5621 Co. Rd. 101 Minnetonka, MN 55345	Develop, organize, coordinate, implement, evaluate, and provide leadership and guidance related to special education programming. Align overall district leadership, coordination, and supervision for staff involved in the creation and implementation of professional development processes in all district special education programs.
Angela Kleinedler, Special Education Coordinator	Phone: 952-401-6808  Email: <a href="mailto:angela.kleinedler@minnetonka.schools.org">angela.kleinedler@minnetonka.schools.org</a>  ISD 276 Minnetonka Community Education Center 4584 Vine Hill Rd. Excelsior, MN 55331	Develop, organize, coordinate, implement, evaluate, and provide leadership and guidance related to early childhood special education programming. Align overall district leadership and coordination for staff involved in the creation and implementation of professional development processes in all district special education programs.

<p>Erin Valenta SAIL Transition Coordinator</p>	<p>Phone: 952-283-8222</p> <p>Email: <a href="mailto:Erin.Valenta@minnetonkasc hools.org">Erin.Valenta@minnetonkasc hools.org</a></p> <p>Minnetonka SAIL Transition Program 19695 Highway 7 Excelsior, MN 55331</p>	<p>Develop, organize, coordinate, implement, evaluate, and provide leadership and guidance related to Transition Age (18-21) special education programming. Align overall district leadership and coordination for staff involved in the creation and implementation of professional development processes in all district special education programs.</p>
---	---	--

- B. Due Process assurances available to parents: Minnetonka Public Schools has appropriate and proper due process procedures in place to assure effective and efficient results of child study procedures and method of providing special education services for the identified pupils, including alternative dispute resolution and due process hearings. A description of these processes are as follows:
- (1) Prior written notice to a) inform the parent that except for the initial placement of a child in special education, the school district will proceed with its proposal for the child's placement or for providing special education services unless the child's parent notifies the district of an objection within 14 days of when the district sends the prior written notice to the parent; and b) state that a parent who objects to a proposal or refusal in the prior written notice may request a conciliation conference or another alternative dispute resolution procedure.
  - (2) Minnetonka Public Schools will not proceed with the initial evaluation of a child, the initial placement of a child in a special education program, or the initial provision of special education services for a child without the prior written consent of the child's parent. A district may not override the written refusal of a parent to consent to an initial evaluation or reevaluation.
  - (3) A parent, after consulting with health care, education, or other professional providers, may agree or disagree to provide the parent's child with sympathomimetic medications unless medical, dental, mental and other health services are necessary, in the professional's judgment, that the risk to the minor's life or health is of such a nature that treatment should be given without delay and the requirement of consent would result in delay or denial of treatment.
  - (4) Parties are encouraged to resolve disputes over the identification, evaluation, educational placement, manifestation determination, interim alternative educational placement, or the provision of a free appropriate public education to a child with a disability through conciliation, mediation, facilitated team meetings, or other alternative process. All dispute resolution options are voluntary on the part of the parent and must not be used to deny or delay the right to a due process hearing. All dispute resolution processes are provided at no cost to the parent.
  - (5) Conciliation Conference: a parent has the opportunity to meet with appropriate district staff in at least one conciliation conference if the parent objects to any proposal of which the parent receives prior written notice. Minnetonka Public Schools holds a conciliation conference within ten calendar days from the date the district receives a parent's objection to a proposal or refusal in the prior written notice. All discussions held during a conciliation conference are confidential and are not admissible in a due process hearing. Within five school days after the final conciliation conference, the district must prepare and provide to the parent a conciliation conference memorandum that describes the district's final proposed offer of service. This memorandum is admissible in evidence in any subsequent proceeding.
  - (6) In addition to offering at least one conciliation conference, Minnetonka Public Schools informs parents of other dispute resolution processes, including at least mediation and facilitated team

meetings. The fact that an alternative dispute resolution process was used is admissible in evidence at any subsequent proceeding. State-provided mediators and team meeting facilitators shall not be subpoenaed to testify at a due process hearing or civil action under special education law nor are any records of mediators or state-provided team meeting facilitators accessible to the parties.

- (7) Descriptions of the mediation process, facilitated team meetings, state complaint, and impartial due process hearings may be found in Minnetonka Public Schools Procedure Safeguard Notice, found [https://minnetonka.finalseite.com/uploaded/Documents/Dist/Support-Services/Procedural\\_Safeguards.pdf](https://minnetonka.finalseite.com/uploaded/Documents/Dist/Support-Services/Procedural_Safeguards.pdf)

#### **IV. Interagency Agreements the District has Entered**

Minnetonka Public Schools does not have a membership with an interagency agreements or joint powers board agreements, however, we are fortunate to work with Southwest Metro for eligible children, ages 3 to 21 that need additional services.

## V. Special Education Advisory Council

In order to increase the involvement of parents of children with disabilities in district policy making and decision making, Minnetonka Public Schools has a special education advisory council.

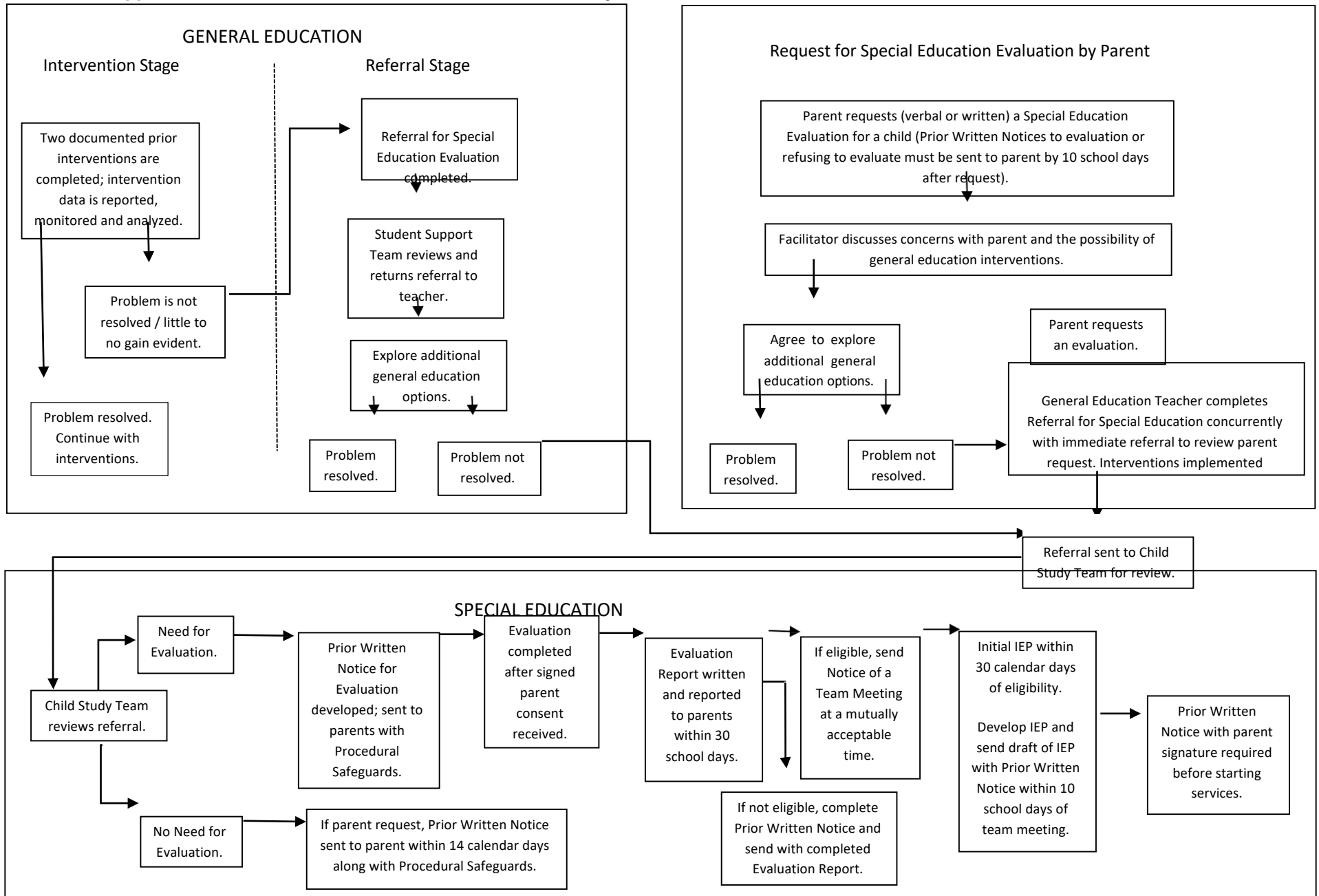
- A. Minnetonka Public Schools Special Education Advisory Council is individually established and established in cooperation with other districts who are members of the same special education cooperative.
- B. Minnetonka Public Schools Special Education Advisory Council is not a subgroup of existing board/council/committee.
- C. Minnetonka Public Schools Special Education Advisory Council consists of the following Individuals:  
Christine Breen, Executive Director of Special Education  
Kristin Laughlin, Director of Special Education  
Angela Kleinedler, Special Education Coordinator  
Jon DeVries, Parent of student with disability  
Trish Barnabee, Parent of student with disability  
Tracy Penn, Parent of student with disability  
Wendy Wichelt, Parent of student with disability  
Carrie Hahn, Parent of student with disability  
Molly Ekstrand, Parent of student with disability  
Teri Pullen, Parent of student with disability  
Autum Toussaint, Parent of student with disability  
Danielle Dahlstrom, Parent of student with a disability  
Theresa Bourdage, Parent of student with a disability  
Sarah Solmonson, Parent of student with a disability  
Jessica Kirk, Parent of a student with a disability  
Christine Ritchie, School Board Member
- D. Minnetonka Public Schools Special Education Advisory Council meets 3 times a year.
- E. The operational procedures of Minnetonka Public Schools Special Education Advisory Council are attached as **Appendix B**.

## VI. Assurances

Code of Federal Regulations, section 300.201: Consistency with State policies. Minnetonka Public Schools, in providing for the education of children with disabilities within its jurisdiction, has in effect policies, procedures, and programs that are consistent with the State policies and procedures established under sections 300.101 through 300.163, and sections 300.165 through 300.174. (Authority: 20 U.S.C. § 1413(a)(1)).

Yes: Assurance given.

**Appendix A: Minnetonka Public Schools Process for Special Education Referrals for Initial Evaluations**



## **Appendix B: Minnetonka Public Schools Special Education Advisory Council (SEAC)**

### **Purpose of SEAC**

The mission of SEAC is to enhance sound district policy and decision-making for special education programming. It works towards respect, support and appropriate education for all children with special needs in our community and to insure that the students' needs under applicable laws are being met.

The goals of SEAC are:

- Increase the involvement of parents/guardians of children with disabilities in district policymaking through honest cooperative dialog.
- Work together with teachers, administrators, and outside sources to enhance the opportunity of parents/guardians with special needs children to develop advocacy skills, establish honest team relationships, and have resources available for parents/guardians.
- Work as a team with teachers and administrators to provide a compassionate, common sense source of support and information to parents/guardians and students with special needs.
- Work as a team to disseminate information pertinent to special education quickly and effectively to parents/guardians of children with disabilities within our district.
- Work as a team to inform parents/guardians of children with disabilities and the community about state law and any other pertinent mandates.

**Members of the SEAC are appointed by the special education director to voluntarily serve as representatives for a two year term, with the opportunity to reapply for additional terms.**

The council will consist of approximately 12 people, including parents, community representatives, and school staff. At least 50 percent of the members must be parents of students from diverse disability areas.