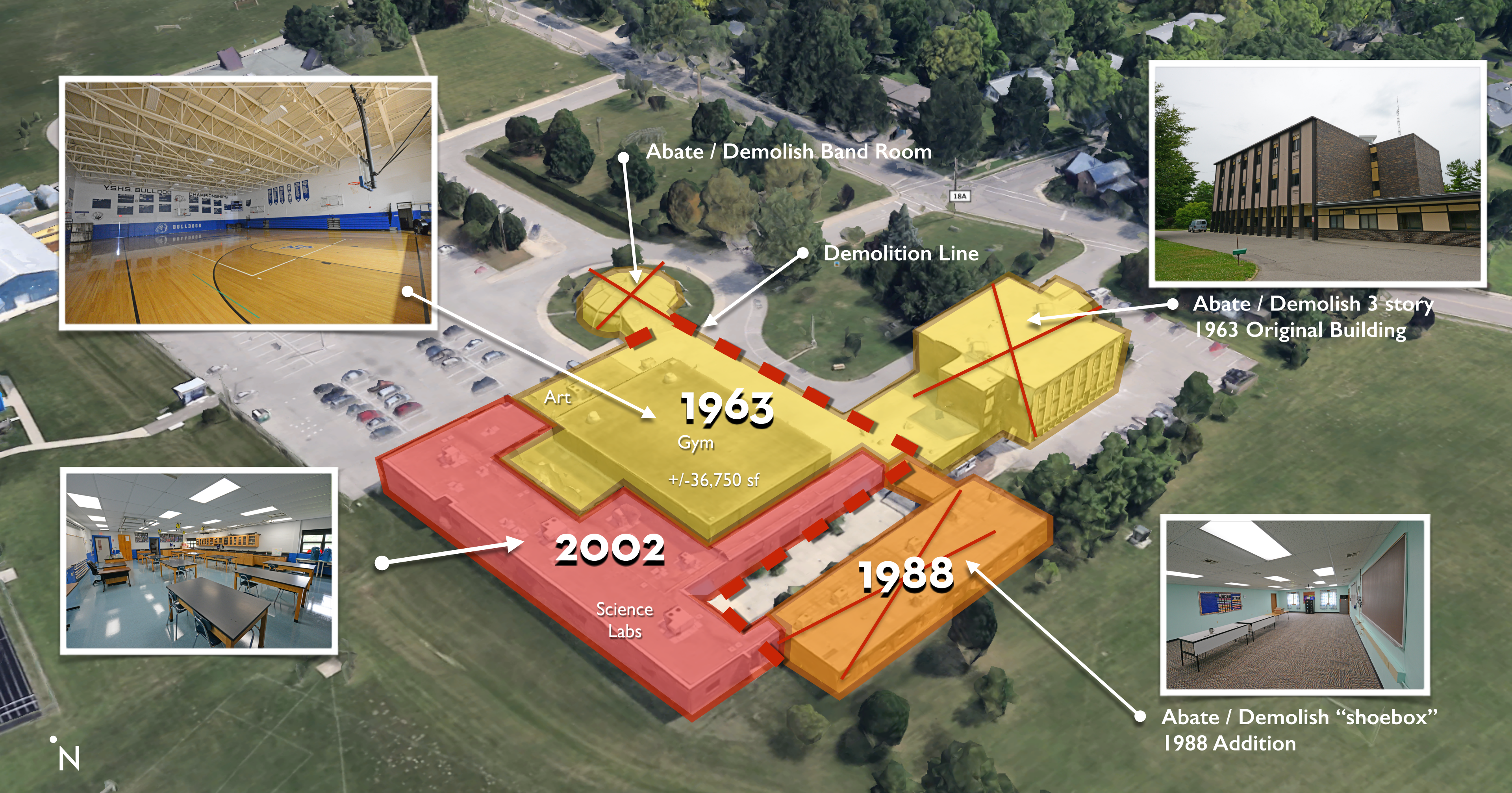




Facility Master Plan

Board Meeting
December 14, 2017



7-12 at MS/HS - Existing / Demo Plan Facility Master Plan



7-12 MS/HS Addition / Renovation Plan

Facility Master Plan

Project Budget = \$18.5M

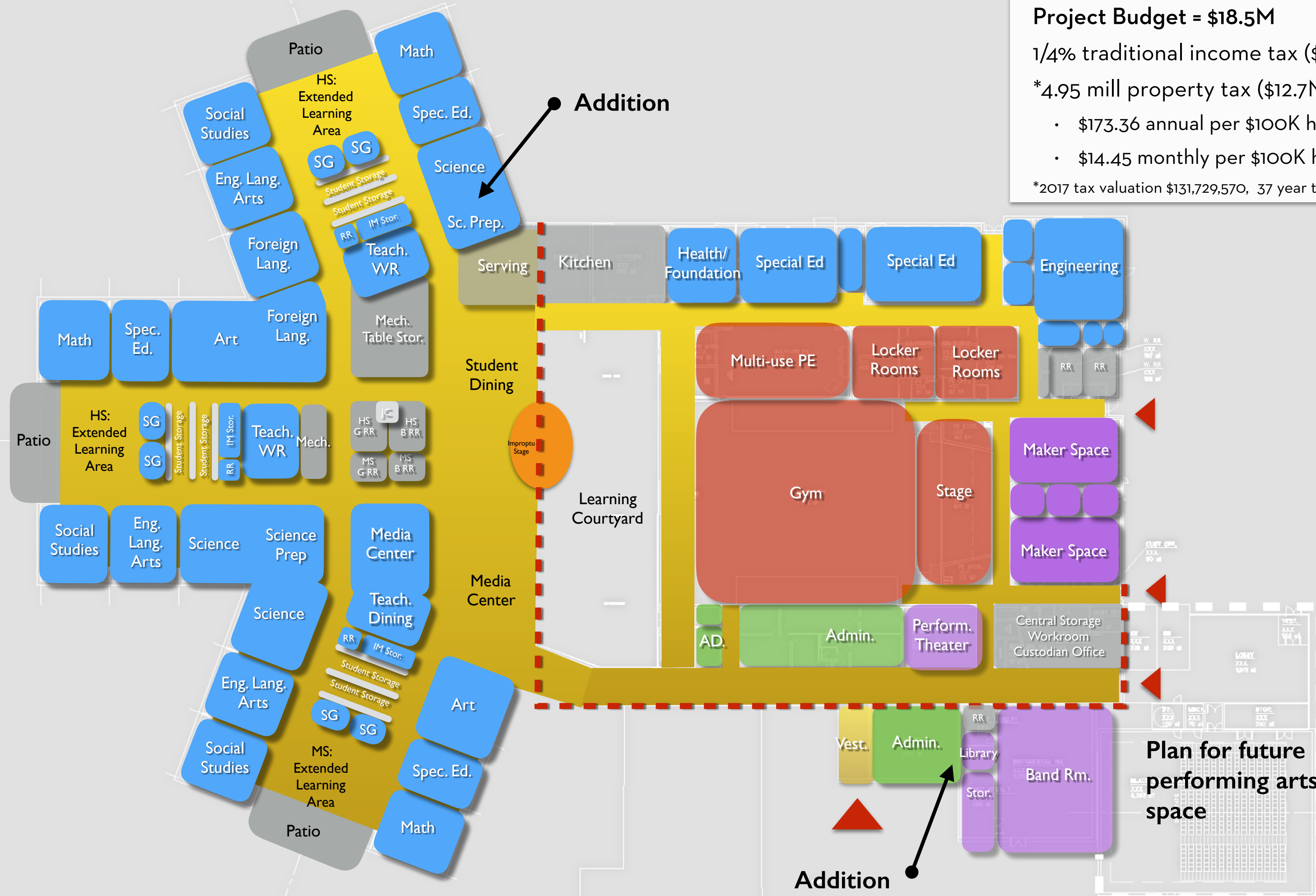
1/4% traditional income tax (\$5.8M)

*4.95 mill property tax (\$12.7M)

- \$173.36 annual per \$100K home value

- \$14.45 monthly per \$100K home value

*2017 tax valuation \$131,729,570, 37 year term, 4.75% interest



7-12 MS/HS Addition / Renovation Plan

Facility Master Plan

				Addition			Renovation			
		OFCC key	#	sf	Total sf		#	sf	Total sf	Notes
	Administration									
1	Reception Area	M/H-AD-1	1	200	200					
2	Secretarial Area	M/H-AD-2	1	200	200					
3	Principals Office	M/H-AD-3	1	150	150					
4	Assistant Principals Office	M/H-AD-4	1	150	150					
5	Conference Room	M/H-AD-5	1	250	250					
6	Mail Work Copy Room	M/H-AD-6					1	200	200	
7	Administrative Storage	M/H-AD-7					1	150	150	
8	Vault Records Storage	M/H-AD-8					1	85	85	
9	Restroom	M/H-AD-10					1	60	60	
10	Guidance Counselors Office	M/H-AD-11					2	120	240	
11	Guidance Records Storage	M/H-AD-12					1	100	100	
12	Health Clinic (incl. RR)	M/H-AD-15					1	250	250	
13	Speech / OT / PT	M/H-AD-16					1	450	450	
14	School Psychologist	M/H-AD-16					1	120	120	
15	Student Services	M/H-AD-16					1	120	120	
16	Advancement	M/H-AD-16					1	120	120	
17	Mental Heath Services	M/H-AD-16					1	120	120	
					950				2,015	

7-12 MS/HS Addition / Renovation Facility Master Plan

				Addition			Renovation			
		OFCC key	#	sf	Total sf		#	sf	Total sf	Notes
	Academic Core (386 Students)									
18	Social Studies	H-AC-1	3	810	2,430					1 per neighborhood
19	English Language Arts	H-AC-1	3	810	2,430					1 per neighborhood
20	Math	H-AC-1	3	810	2,430					1 per neighborhood
21	Foreign Language	H-AC-1	2	810	1,620					
22	Health / Foundation	H-PE-11					1	822	822	
23	Science Lab	H-AC-4	3	1,080	3,240					1 per neighborhood
24	Science Prep	H-AC-5	2	300	600					1 back to back in adjacent neighborhoods
25	Extended Learning Area	H-AC-11	3	1,558	4,674					1 per neighborhood
26	Small Group Room	H-AC-9	6	150	900					2 per neighborhood
27	Teacher Prep / Workroom	H-AC-6	2	700	1,400					1 Teacher dining as Teacher WR
28	Individual Restroom	H-AC-7	3	60	180					
29	Instructional Material Storage	H-AC-10	3	175	525					
30	Engineering Lab						1	2,016	2,016	includes support spaces
31	Performance / Theater						1	696	696	
32	Maker Space / Scene Shop						2	1,341	2,682	includes support spaces
					20,429			6,216		

7-12 MS/HS Addition / Renovation Facility Master Plan

			Addition			Renovation				
		OFCC key	#	sf	Total sf	#	sf	Total sf		Notes
	Special Ed									
33	Self Contained Classroom	M/H-SE-1				1	1,147	1,147		MH
34	Self Contained Classroom	M/H-SE-1				1	1,358	1,358		
35	Workroom / Conference	M/H-SE-2				1	169	169		Kitchenette
36	Restroom / Shower	M/H-SE-3				1	100	100		
37	Small Self Contained Classroom	M/H-SE5	3	600	1,800					
					1,800			2,774		
	Art									
38	Art Room	H-VA-1	2	1,080	2,160					
39	Kiln / Ceramic Storage	H-VA-2	2	100	200					
40	Art Material Storage	H-VA-3	2	150	300					
					2,660			0		
	Music									
41	Music Room	H-MU-1	1	2,000	2,000					
42	Music Library	H-MU-4	1	200	200					
43	Music Storage	H-MU-2	1	450	450					
44	Music Storage	H-MU-2	1	580	580					mezzanine
					3,230			0		
	Media Center									
45	Reading Room	H-MC-1	1	1,540	1,540					
46	Media Specialist Office	H-MC-2	1	120	120					
47	Workroom / Storage	H-MC-3	1	350	350					
48	Network Operations Room	H-MC-4	1	300	300					
49	Conference Room	H-MC-5	1	200	200					
					2,510			0		

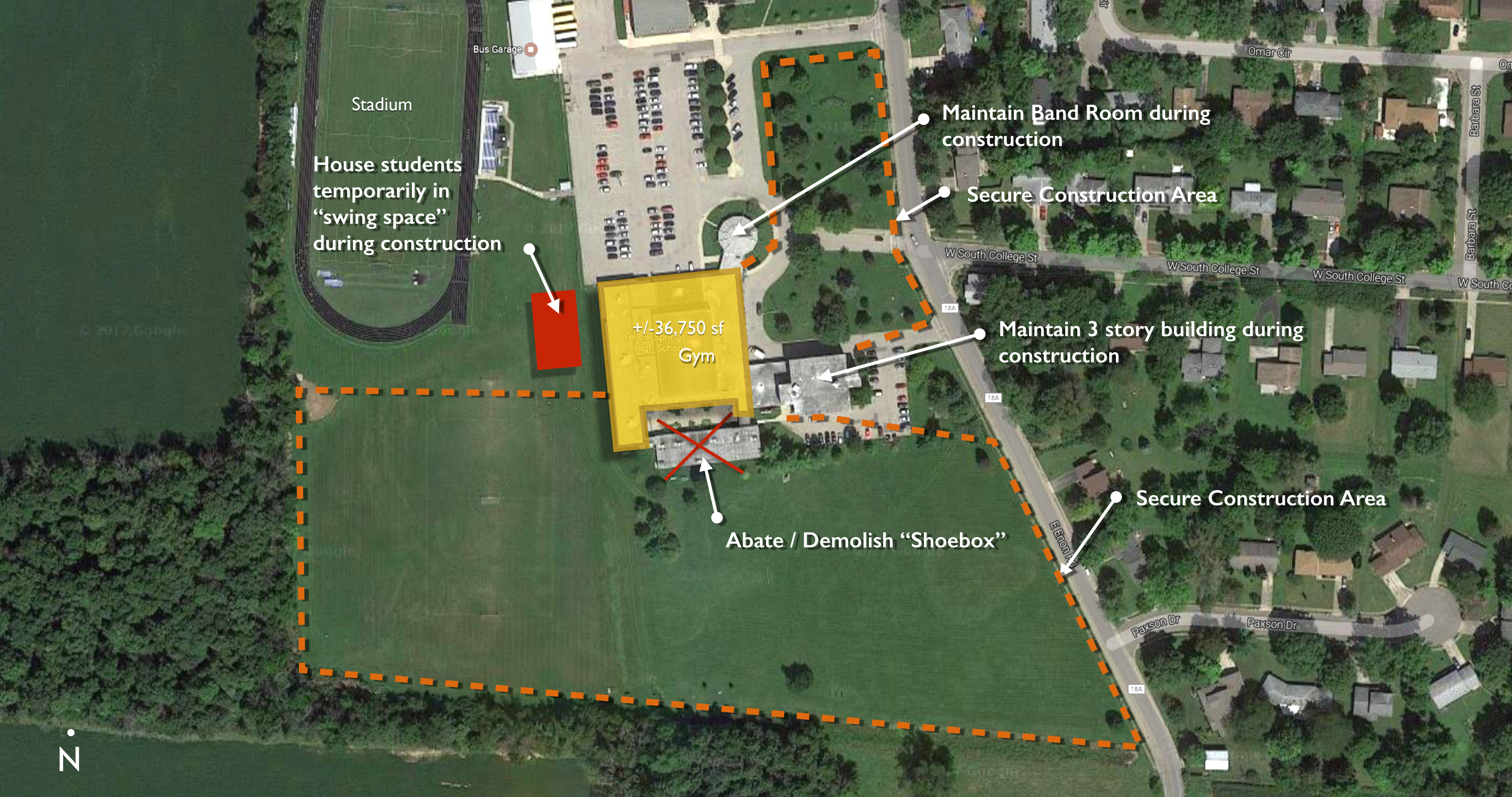
7-12 MS/HS Addition / Renovation Facility Master Plan

				Addition			Renovation			
		OFCC key	#	sf	Total sf	#	sf	Total sf		Notes
	Student Dining / Kitchen									
50	Kitchen - Preperation Area	M/H-FS-1a				1	650	650		
51	Kitchen - Serving Area	M/H-FS-1b				1	750	750		
52	Kitchen - Dry Food Storage	M/H-FS-1c				1	225	225		
53	Kitchen - Cooler	M/H-FS-1d				1	175	175		
54	Kitchen - Ware Washing	M/H-FS-1e				1	150	150		
55	Dietician Office	M/H-FS-2				1	100	100		
56	Restroom / Locker Room	M/H-FS-3				1	150	150		
57	Student Dining Room	M/H-SD-1	1	2,197	2,197					
58	Table Storage	H-SD-8	1	450	450					
59	Stage	M/H-SD-2	1	275	275					Presenters Platform
60	Staff Dining	M/H-SD-1	1	740	740					doubles at Teacher Workroom
					3,662			2,200		
	Athletics									
61	Gymnaism	H-PE-1				1	7,786	7,786		
62	Stage	M/H-SD-2				1	881	881		
63	Student Locker Room	H-PE-3				2	469	938		
64	Student Restroom / Shower	H-PE-4				2	274	548		
65	P.E. / Athletic Office	H-PE-6				2	87	174		
66	Multi-use P.E. Room	H-PE-12				1	1,451	1,451		
67	Phsyical Education Storage	H-PE-5				3	157	471		
					0			12,249		

7-12 MS/HS Addition / Renovation Facility Master Plan

			Addition			Renovation				
		OFCC key	#	sf	Total sf	#	sf	Total sf		Notes
	Building Services									
68	Custodial Workroom / Storage	M/H-CU-1				1	758	758		
69	Custodial Office	M/H-CU-2				1	120	120		
70	Restroom	M/H-BS-10				1	60	60		
71	Large Group Restrooms	M/H-BS-1	1	834	834	1	372	372		
72	Storm Shelter Restroom	M/H-BS-1				1	135	135		
73	Custodial Closet	M/H-BS-2	1	46	46	1	39	39		
74	Electrical Closet	M/H-BS-3	3	50	150	2	80	160		
75	Technology Closet	M/H-BS-4	3	50	150	2	40	80		
76	Corridors	M/H-BS-5	1	7,668	7,668	1	7,442	7,442		
77	Student Storage / Cubbies		3	600	1,800					
78	Mechanical Rooms	M/H-BS-6	1	3,169	3,169					
79	Storm Shelter Mech. Rooms	M/H-BS-6				1	135	135		
80	Loading / Receiving	M/H-BS-9				1	90	90		
81	Recycling Room	M/H-BS-11				1	76	76		
					13,817			9,467		
					49,058			34,921		Subtotal sf
					5,094			1,826		Construction Factor
					54,152			36,747		Subtotal sf + Const. Factor

7-12 MS/HS Addition / Renovation Facility Master Plan



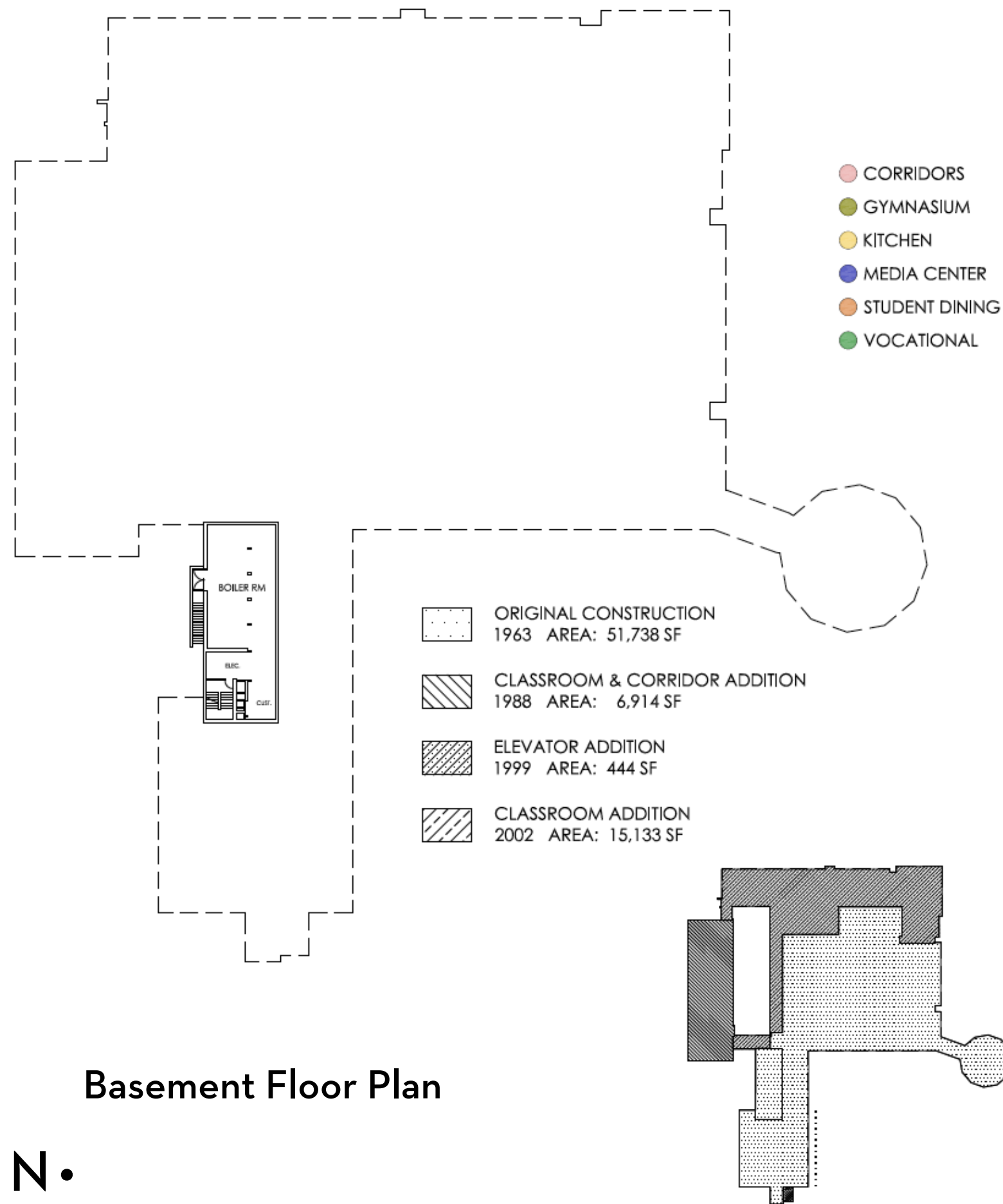
7-12 MS/HS Addition / Renovation Plan

Facility Master Plan

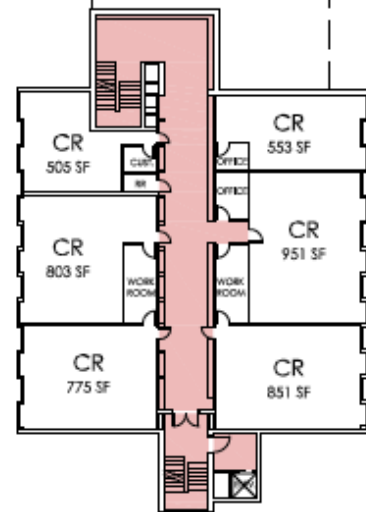
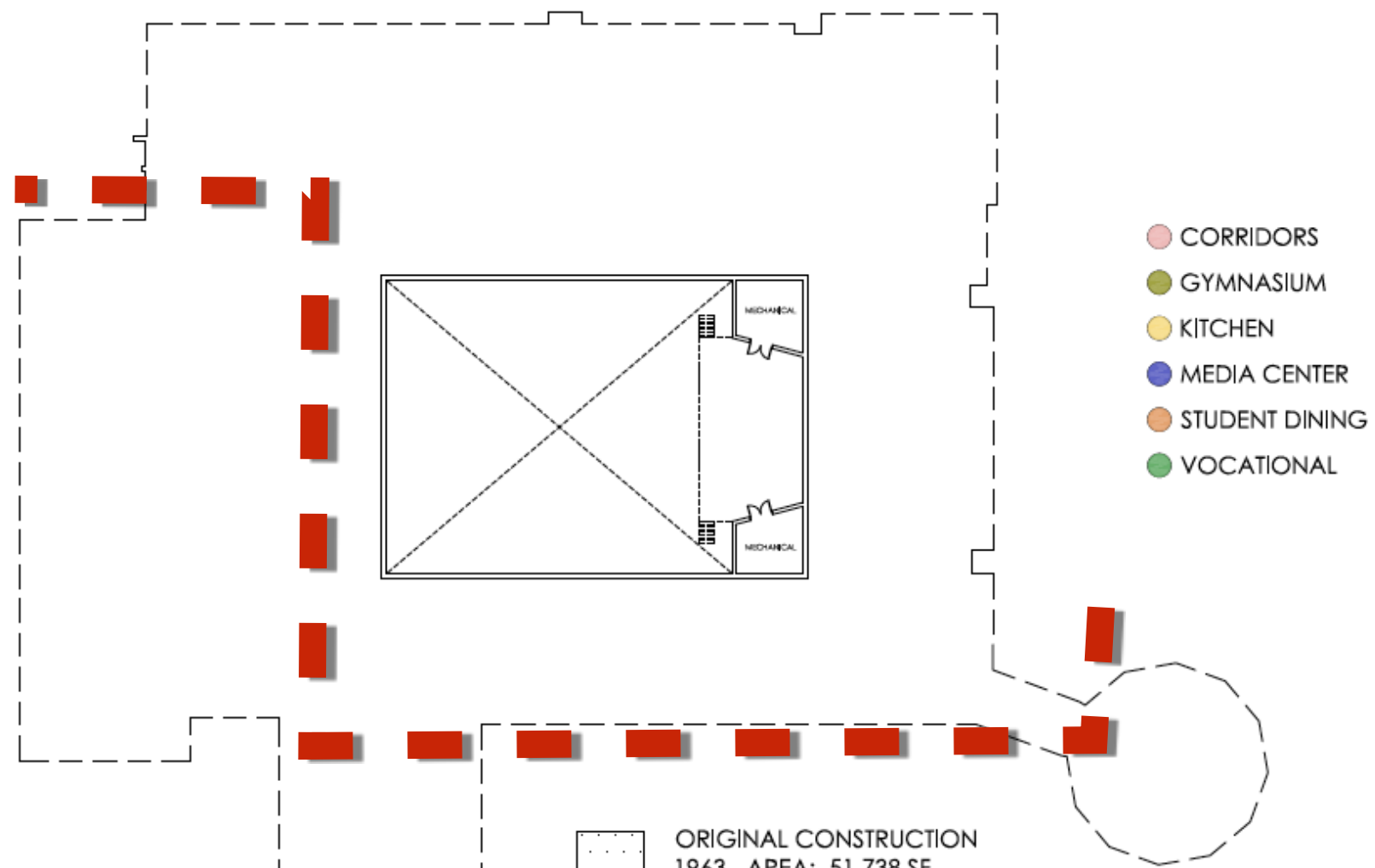


7-12 MS/HS Addition / Renovation Plan

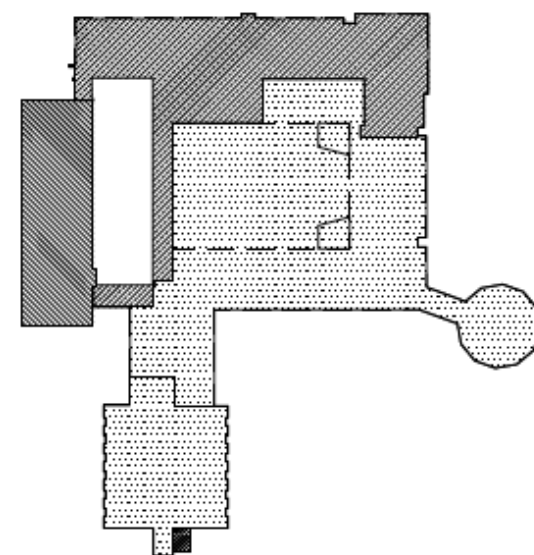
Facility Master Plan



7-12 MS/HS - Existing Floor Plans Facility Master Plan

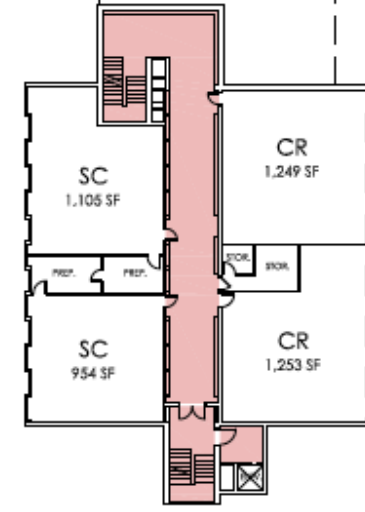
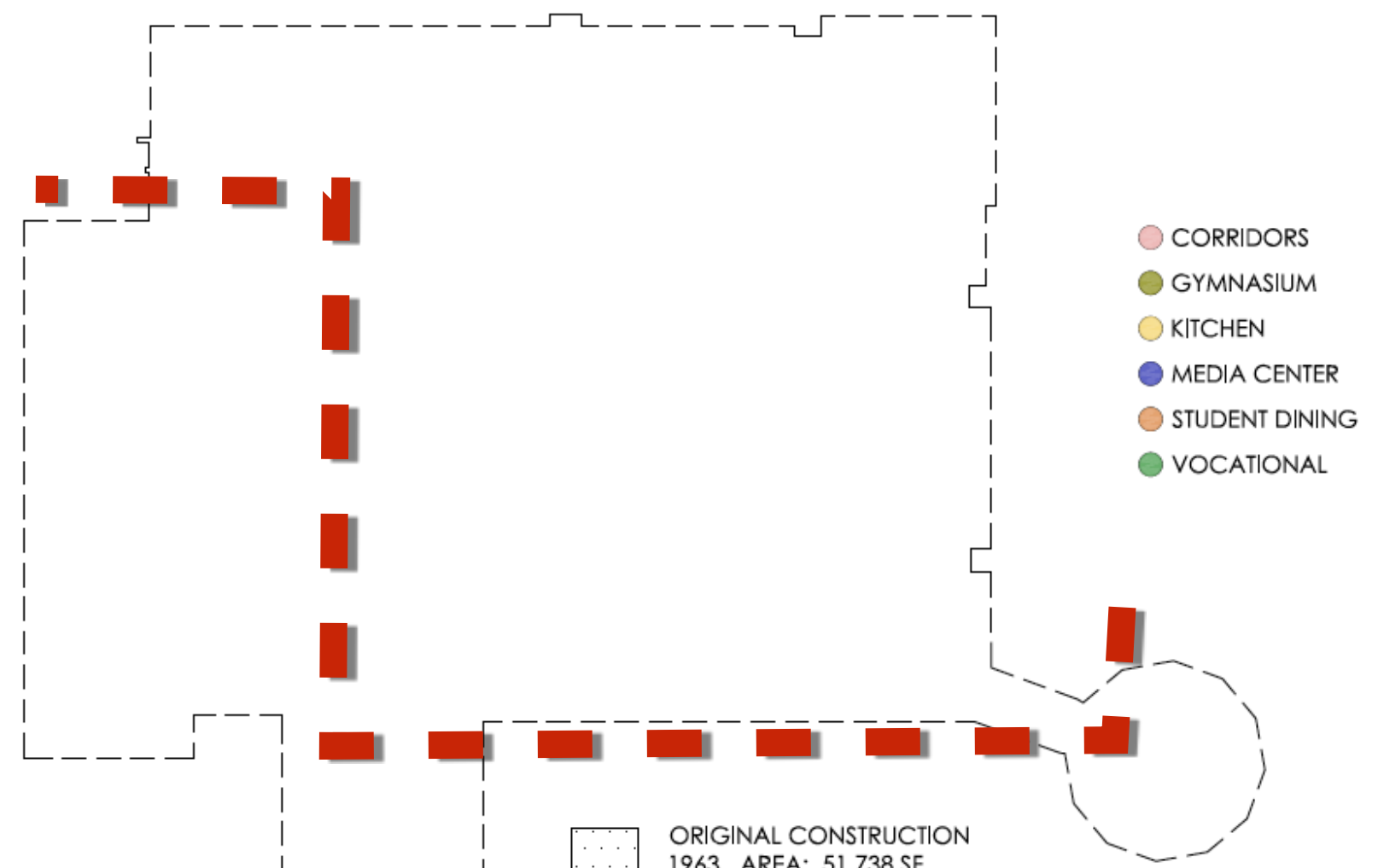


- ORIGINAL CONSTRUCTION
1963 AREA: 51,738 SF
- CLASSROOM & CORRIDOR ADDITION
1988 AREA: 6,914 SF
- ELEVATOR ADDITION
1999 AREA: 444 SF
- CLASSROOM ADDITION
2002 AREA: 15,133 SF

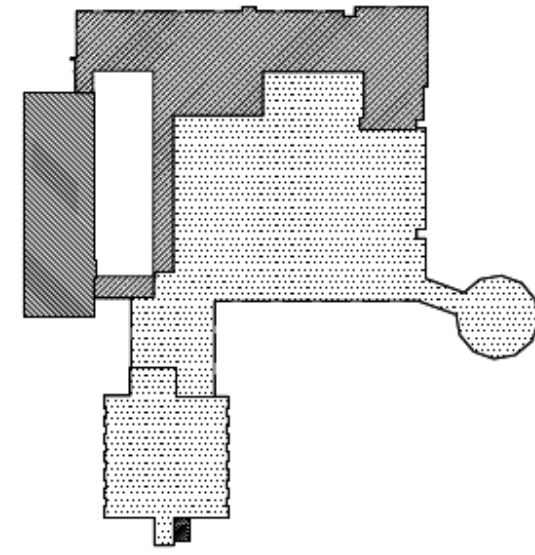


Second Floor Plan

N.



- ORIGINAL CONSTRUCTION
1963 AREA: 51,738 SF
- CLASSROOM & CORRIDOR ADDITION
1988 AREA: 6,914 SF
- ELEVATOR ADDITION
1999 AREA: 444 SF
- CLASSROOM ADDITION
2002 AREA: 15,133 SF



Third Floor Plan

N.

7-12 MS/HS - Existing Floor Plans

Facility Master Plan