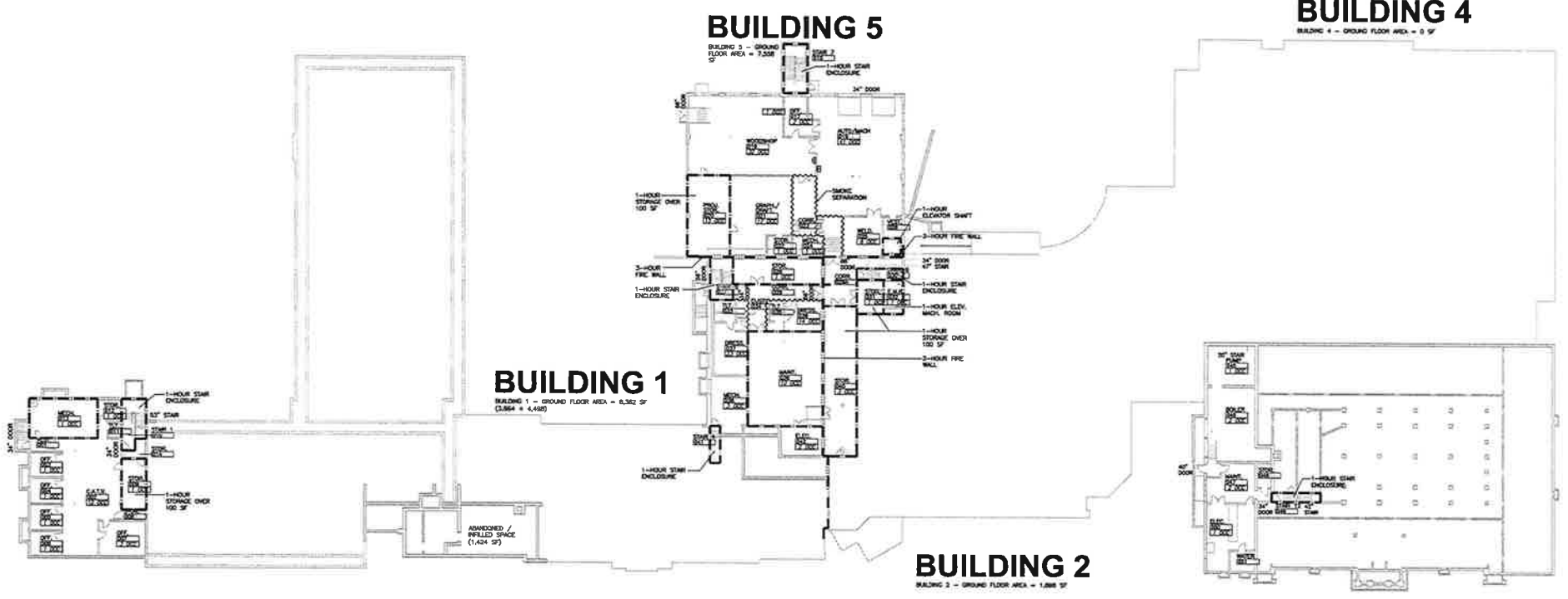


OCCUPANT LOAD	EXIT CAPACITY
<b>BUILDING 1</b> GROUND FLOOR - 76 FIRST FLOOR - 890 SECOND FLOOR - 938 THIRD FLOOR - 340 TOTAL = 2244	<b>BUILDING 1</b> GROUND FLOOR - DOORS 102"/2 = 510 FIRST FLOOR - DOORS 502"/2 = 2510 SECOND FLOOR - DOORS 102"/2 = 510; STAIRS 226"/3 = 753; TOTAL = 1263 THIRD FLOOR - STAIRS 120"/3 = 400
<b>BUILDING 2</b> GROUND FLOOR - 5 FIRST FLOOR - 357 SECOND FLOOR - 189 TOTAL = 551	<b>BUILDING 2</b> GROUND FLOOR - DOORS 56"/2 = 280; STAIRS 47"/3 = 157; TOTAL = 437 FIRST FLOOR - DOORS 340"/2 = 1700 SECOND FLOOR - DOORS 102"/2 = 510
<b>BUILDING 3</b> GROUND FLOOR - 6 FIRST FLOOR - 263 SECOND FLOOR - 8 TOTAL = 277	<b>BUILDING 3</b> GROUND FLOOR - DOORS 40"/2 = 200; STAIRS 62"/3 = 207; TOTAL = 407 FIRST FLOOR - DOORS 358"/2 = 1790 SECOND FLOOR - STAIRS 42"/3 = 140
<b>BUILDING 4</b> GROUND FLOOR - 0 FIRST FLOOR - 1900 SECOND FLOOR - 0 TOTAL = 1900	<b>BUILDING 4</b> GROUND FLOOR - 0 FIRST FLOOR - DOORS 408"/2 = 2040 SECOND FLOOR - 0
<b>BUILDING 5</b> GROUND FLOOR - 114 FIRST FLOOR - 468 SECOND FLOOR - 227 TOTAL = 809	<b>BUILDING 5</b> GROUND FLOOR - DOORS 170"/2 = 850 FIRST FLOOR - DOORS 294"/2 = 1470 SECOND FLOOR - DOORS 66"/2 = 340; STAIRS 48"/3 = 160; TOTAL = 500

MAXIMUM TRAVEL DISTANCE TO EXIT: 200' (E), 250' (A), SPRINKLER PROTECTED



CODE DATA																																											
<b>APPLICABLE CODES</b> INTERNATIONAL BUILDING CODE - 2000 EDITION BOCA NATIONAL BUILDING CODE - 1999 EDITION NFPA 101 LIFE SAFETY CODE - 2003 EDITION	<b>CONSTRUCTION TYPES</b> BUILDING 1: 3B NONCOMBUSTIBLE/COMBUSTIBLE, UNPROTECTED BUILDING 2: 5B COMBUSTIBLE, UNPROTECTED BUILDING 3: 3B NONCOMBUSTIBLE/COMBUSTIBLE, UNPROTECTED BUILDING 4: 2C (BOCA) 2B (IBC) NONCOMBUSTIBLE, UNPROTECTED BUILDING 5: 3B NONCOMBUSTIBLE/COMBUSTIBLE, UNPROTECTED																																										
<b>USE GROUP CLASSIFICATIONS:</b> BUILDING 1: E - EDUCATIONAL (CLASSROOMS) B - BUSINESS (ADMINISTRATIVE OFFICES) BUILDING 2: A2 - ASSEMBLY (CAFETERIA) A3 - ASSEMBLY (MEDIA) E - EDUCATIONAL (CLASSROOMS) BUILDING 3: E - EDUCATIONAL (CLASSROOMS) B - BUSINESS (ADMINISTRATIVE OFFICES) BUILDING 4: A3 - ASSEMBLY (GYMNASIUM) E - EDUCATIONAL BUILDING 5: A1 - THEATER E - EDUCATIONAL F1 - FACTORY (SHOP AREAS)	<b>FULL AUTOMATIC SPRINKLER SYSTEM</b>																																										
<b>BUILDING AREAS</b>																																											
	<table border="1"> <thead> <tr> <th></th> <th>BLDG 1</th> <th>BLDG 2</th> <th>BLDG 3</th> <th>BLDG 4</th> <th>BLDG 5</th> <th>GROSS</th> </tr> </thead> <tbody> <tr> <td>GROUND FLOOR</td> <td>8,362</td> <td>1,898</td> <td>2,777</td> <td>0</td> <td>7,558</td> <td>20,595</td> </tr> <tr> <td>FIRST FLOOR</td> <td>38,322</td> <td>19,836</td> <td>18,077</td> <td>20,486</td> <td>7,569</td> <td>105,290</td> </tr> <tr> <td>SECOND FLOOR</td> <td>38,409</td> <td>7,772</td> <td>1,886</td> <td>0</td> <td>3,221</td> <td>52,388</td> </tr> <tr> <td>THIRD FLOOR</td> <td>12,373</td> <td>0</td> <td>0</td> <td>0</td> <td>0</td> <td>12,373</td> </tr> <tr> <td>TOTAL</td> <td>99,466</td> <td>29,506</td> <td>22,840</td> <td>20,486</td> <td>18,348</td> <td>190,646</td> </tr> </tbody> </table>		BLDG 1	BLDG 2	BLDG 3	BLDG 4	BLDG 5	GROSS	GROUND FLOOR	8,362	1,898	2,777	0	7,558	20,595	FIRST FLOOR	38,322	19,836	18,077	20,486	7,569	105,290	SECOND FLOOR	38,409	7,772	1,886	0	3,221	52,388	THIRD FLOOR	12,373	0	0	0	0	12,373	TOTAL	99,466	29,506	22,840	20,486	18,348	190,646
	BLDG 1	BLDG 2	BLDG 3	BLDG 4	BLDG 5	GROSS																																					
GROUND FLOOR	8,362	1,898	2,777	0	7,558	20,595																																					
FIRST FLOOR	38,322	19,836	18,077	20,486	7,569	105,290																																					
SECOND FLOOR	38,409	7,772	1,886	0	3,221	52,388																																					
THIRD FLOOR	12,373	0	0	0	0	12,373																																					
TOTAL	99,466	29,506	22,840	20,486	18,348	190,646																																					



**0.0 OVERALL GROUND FLOOR PLAN**  
 SCALE: 1" = 24'-0" (1:288)

WALL RATING KEY	
	3 HOUR RATED
	2 HOUR RATED
	1 HOUR RATED
	SMOKE SEPARATION

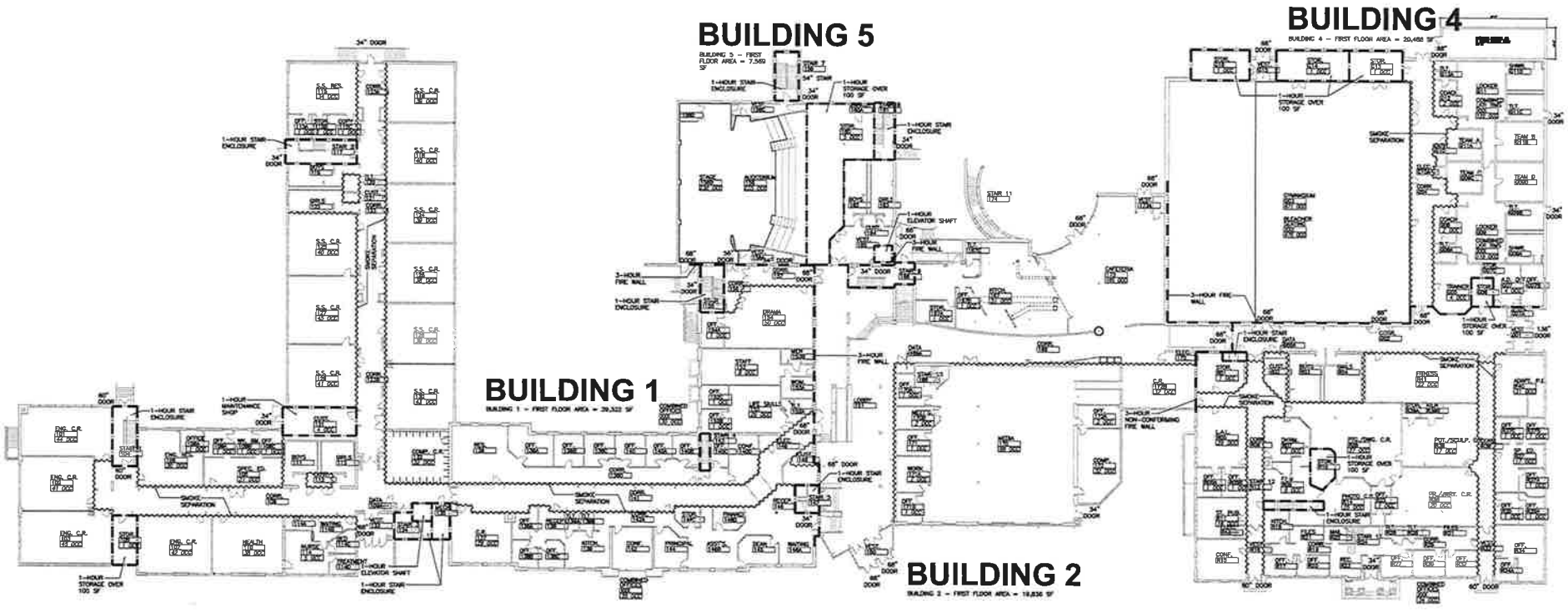


OCCUPANT LOAD	EXIT CAPACITY
<b>BUILDING 1</b> GROUND FLOOR - 76 FIRST FLOOR - 890 SECOND FLOOR - 938 <b>THIRD FLOOR - 340</b> TOTAL = 2244	<b>BUILDING 1</b> GROUND FLOOR - DOORS 102"/2 = 510 FIRST FLOOR - DOORS 502"/2 = 2510 SECOND FLOOR - DOORS 102"/2 = 510; STAIRS 226"/3 = 753; TOTAL = 1263 THIRD FLOOR - STAIRS 120"/3 = 400
<b>BUILDING 2</b> GROUND FLOOR - 5 FIRST FLOOR - 357 <b>SECOND FLOOR - 189</b> TOTAL = 551	<b>BUILDING 2</b> GROUND FLOOR - DOORS 56"/2 = 280; STAIRS 47"/3 = 157; TOTAL = 437 FIRST FLOOR - DOORS 340"/2 = 1700 SECOND FLOOR - DOORS 102"/2 = 510
<b>BUILDING 3</b> GROUND FLOOR - 6 FIRST FLOOR - 263 <b>SECOND FLOOR - 8</b> TOTAL = 277	<b>BUILDING 3</b> GROUND FLOOR - DOORS 40"/2 = 200; STAIRS 62"/3 = 207; TOTAL = 407 FIRST FLOOR - DOORS 358"/2 = 1790 SECOND FLOOR - STAIRS 42"/3 = 140
<b>BUILDING 4</b> GROUND FLOOR - 0 FIRST FLOOR - 1900 <b>SECOND FLOOR - 0</b> TOTAL = 1900	<b>BUILDING 4</b> GROUND FLOOR - 0 FIRST FLOOR - DOORS 408"/2 = 2040 SECOND FLOOR - 0
<b>BUILDING 5</b> GROUND FLOOR - 114 FIRST FLOOR - 468 <b>SECOND FLOOR - 227</b> TOTAL = 809	<b>BUILDING 5</b> GROUND FLOOR - DOORS 170"/2 = 850 FIRST FLOOR - DOORS 294"/2 = 1470 SECOND FLOOR - DOORS 68"/2 = 340; STAIRS 48"/3 = 160; TOTAL = 500

MAXIMUM TRAVEL DISTANCE TO EXIT: 200' (E), 250' (A), SPRINKLER PROTECTED



CODE DATA						
<b>APPLICABLE CODES:</b> INTERNATIONAL BUILDING CODE - 2000 EDITION BOCA NATIONAL BUILDING CODE - 1998 EDITION NFPA 101 LIFE SAFETY CODE - 2003 EDITION	<b>CONSTRUCTION TYPES:</b> BUILDING 1: 3B NONCOMBUSTIBLE/COMBUSTIBLE, UNPROTECTED BUILDING 2: 5B COMBUSTIBLE, UNPROTECTED BUILDING 3: 3B NONCOMBUSTIBLE/COMBUSTIBLE, UNPROTECTED BUILDING 4: 2C (BOCA) 2B (IBC) NONCOMBUSTIBLE, UNPROTECTED BUILDING 5: 3B NONCOMBUSTIBLE/COMBUSTIBLE, UNPROTECTED					
<b>USE GROUP CLASSIFICATIONS:</b> BUILDING 1: E - EDUCATIONAL (CLASSROOMS) B - BUSINESS (ADMINISTRATIVE OFFICES) BUILDING 2: A2 - ASSEMBLY (CAFETERIA) A3 - ASSEMBLY (MEDIA) E - EDUCATIONAL (CLASSROOMS) BUILDING 3: E - EDUCATIONAL (CLASSROOMS) B - BUSINESS (ADMINISTRATIVE OFFICES) BUILDING 4: A3 - ASSEMBLY (GYMNASIUM) E - EDUCATIONAL BUILDING 5: A1 - THEATER E - EDUCATIONAL F1 - FACTORY (SHOP AREAS)	<b>FULL AUTOMATIC SPRINKLER SYSTEM</b>					
BUILDING AREAS						
	BLDG 1	BLDG 2	BLDG 3	BLDG 4	BLDG 5	GROSS
GROUND FLOOR	8,362	1,898	2,777	0	7,558	20,595
FIRST FLOOR	39,322	19,836	18,077	20,486	7,569	105,290
SECOND FLOOR	39,409	7,772	1,866	0	3,221	52,388
THIRD FLOOR	12,373	0	0	0	0	12,373
TOTAL	99,466	29,506	22,640	20,486	18,348	190,646



**1.0 OVERALL FIRST FLOOR PLAN**  
 SCALE: 1" = 24'-0" (1:288)

WALL RATING KEY	
	3 HOUR RATED
	2 HOUR RATED
	1 HOUR RATED
	SMOKE SEPARATION

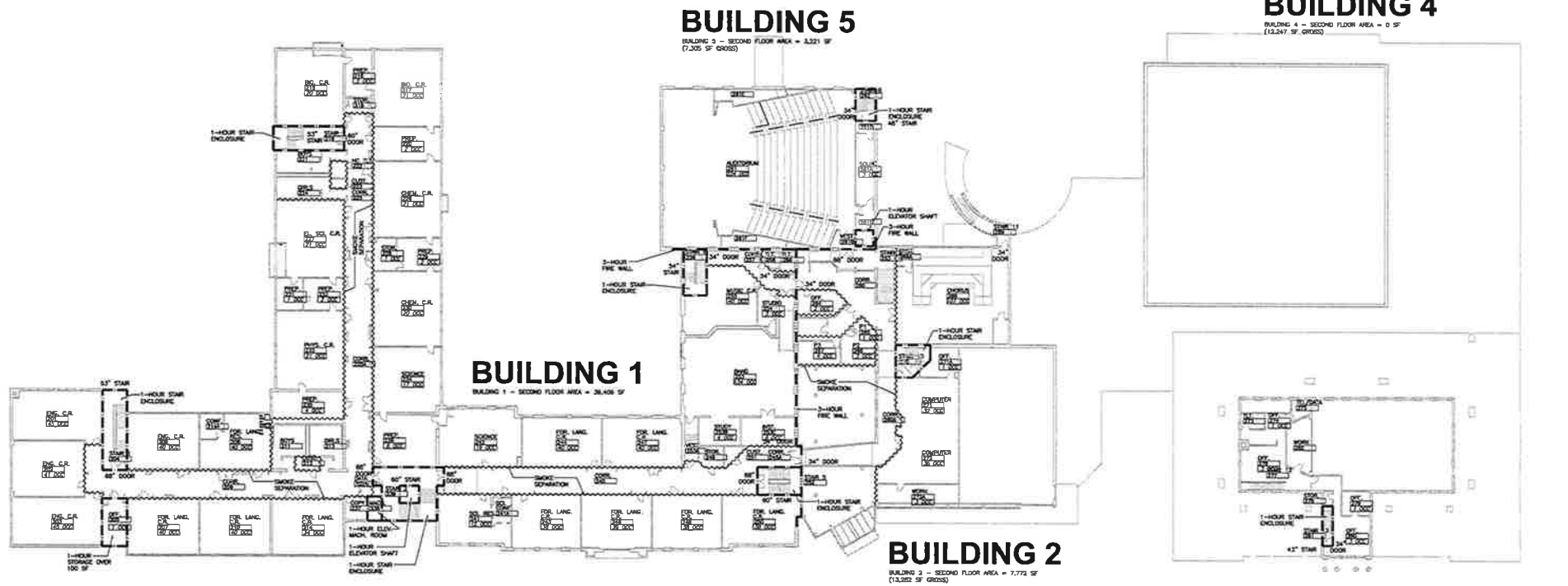


OCCUPANT LOAD	EXIT CAPACITY
<b>BUILDING 1</b> GROUND FLOOR - 76 FIRST FLOOR - 890 SECOND FLOOR - 938 THIRD FLOOR - 340 TOTAL = 2244  <b>BUILDING 2</b> GROUND FLOOR - 5 FIRST FLOOR - 357 SECOND FLOOR - 189 TOTAL = 551  <b>BUILDING 3</b> GROUND FLOOR - 6 FIRST FLOOR - 263 SECOND FLOOR - 8 TOTAL = 277  <b>BUILDING 4</b> GROUND FLOOR - 0 FIRST FLOOR - 1900 SECOND FLOOR - 0 TOTAL = 1900  <b>BUILDING 5</b> GROUND FLOOR - 114 FIRST FLOOR - 458 SECOND FLOOR - 227 TOTAL = 809	<b>BUILDING 1</b> GROUND FLOOR - DOORS 102"/2 = 510 FIRST FLOOR - DOORS 502"/2 = 2510 SECOND FLOOR - DOORS 102"/2 = 510; STAIRS 226"/.3 = 753; TOTAL = 1263 THIRD FLOOR - STAIRS 120"/.3 = 400  <b>BUILDING 2</b> GROUND FLOOR - DOORS 56"/2 = 280; STAIRS 47"/.3 = 157; TOTAL = 437 FIRST FLOOR - DOORS 340"/2 = 1700 SECOND FLOOR - DOORS 102"/2 = 510  <b>BUILDING 3</b> GROUND FLOOR - DOORS 40"/2 = 200; STAIRS 62"/.3 = 207; TOTAL = 407 FIRST FLOOR - DOORS 358"/2 = 1790 SECOND FLOOR - STAIRS 42"/.3 = 140  <b>BUILDING 4</b> GROUND FLOOR - 0 FIRST FLOOR - DOORS 408"/2 = 2040 SECOND FLOOR - 0  <b>BUILDING 5</b> GROUND FLOOR - DOORS 170"/2 = 850 FIRST FLOOR - DOORS 294"/2 = 1470 SECOND FLOOR - DOORS 68"/2 = 340; STAIRS 48"/.3 = 160; TOTAL = 500

MAXIMUM TRAVEL DISTANCE TO EXIT: 200' (E), 250' (A), SPRINKLER PROTECTED



CODE DATA						
<b>APPLICABLE CODES:</b> INTERNATIONAL BUILDING CODE - 2000 EDITION BOCA NATIONAL BUILDING CODE - 1999 EDITION NFPA 101 LIFE SAFETY CODE - 2003 EDITION  <b>USE GROUP CLASSIFICATIONS:</b> BUILDING 1: E - EDUCATIONAL (CLASSROOMS) B - BUSINESS (ADMINISTRATIVE OFFICES) BUILDING 2: A2 - ASSEMBLY (CAFETERIA) A3 - ASSEMBLY (MEDIA) E - EDUCATIONAL (CLASSROOMS) BUILDING 3: E - EDUCATIONAL (CLASSROOMS) B - BUSINESS (ADMINISTRATIVE OFFICES) BUILDING 4: A3 - ASSEMBLY (GYMNASIUM) E - EDUCATIONAL BUILDING 5: A1 - THEATER E - EDUCATIONAL F1 - FACTORY (SHOP AREAS)	<b>CONSTRUCTION TYPES:</b> BUILDING 1: 3B NONCOMBUSTIBLE/COMBUSTIBLE, UNPROTECTED BUILDING 2: 5B COMBUSTIBLE, UNPROTECTED BUILDING 3: 3B NONCOMBUSTIBLE/COMBUSTIBLE, UNPROTECTED BUILDING 4: 2C (BOCA) 2B (IBC) NONCOMBUSTIBLE, UNPROTECTED BUILDING 5: 3B NONCOMBUSTIBLE/COMBUSTIBLE, UNPROTECTED  <b>FULL AUTOMATIC SPRINKLER SYSTEM</b>					
BUILDING AREAS						
	BLDG 1	BLDG 2	BLDG 3	BLDG 4	BLDG 5	GROSS
GROUND FLOOR	8,362	1,898	2,777	0	7,558	20,595
FIRST FLOOR	35,322	19,836	18,077	20,486	7,569	105,290
SECOND FLOOR	39,409	7,772	1,986	0	3,221	52,388
THIRD FLOOR	12,373	0	0	0	0	12,373
TOTAL	95,466	29,506	22,840	20,486	18,348	190,646

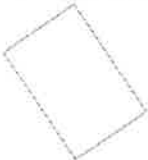


**2.0** OVERALL SECOND FLOOR PLAN  
 SCALE: 1" = 24'-0" (1:288)

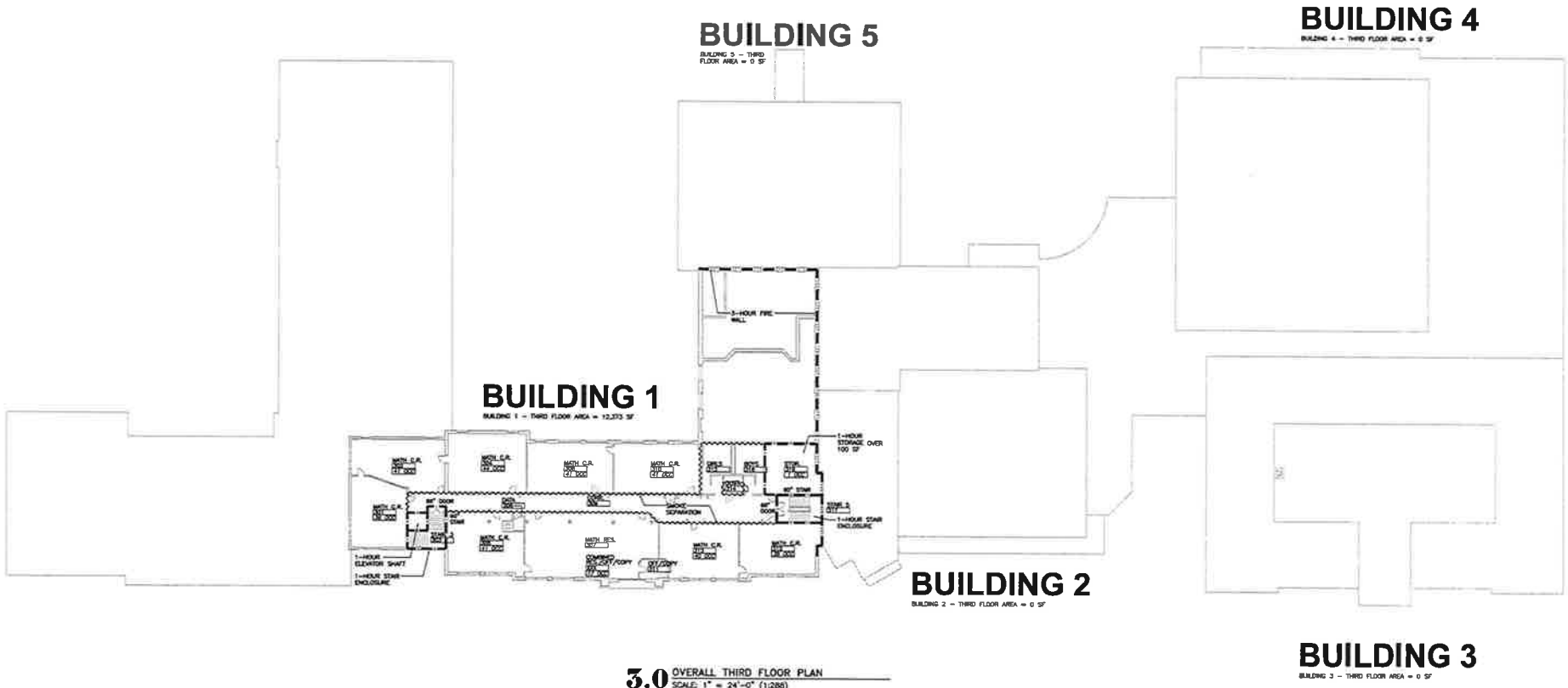
WALL RATING KEY	
	3 HOUR RATED
	2 HOUR RATED
	1 HOUR RATED
	SMOKE SEPARATION

OCCUPANT LOAD	EXIT CAPACITY
<b>BUILDING 1</b> GROUND FLOOR - 76 FIRST FLOOR - 890 SECOND FLOOR - 938 THIRD FLOOR - 340 TOTAL = 2244	<b>BUILDING 1</b> GROUND FLOOR - DOORS 102"/2 = 510 FIRST FLOOR - DOORS 502"/2 = 2510 SECOND FLOOR - DOORS 102"/2 = 510; STAIRS 226"/3 = 753; TOTAL = 1263 THIRD FLOOR - STAIRS 120"/3 = 400
<b>BUILDING 2</b> GROUND FLOOR - 5 FIRST FLOOR - 357 SECOND FLOOR - 189 TOTAL = 551	<b>BUILDING 2</b> GROUND FLOOR - DOORS 56"/2 = 280; STAIRS 47"/3 = 157; TOTAL = 437 FIRST FLOOR - DOORS 340"/2 = 1700 SECOND FLOOR - DOORS 102"/2 = 510
<b>BUILDING 3</b> GROUND FLOOR - 6 FIRST FLOOR - 263 SECOND FLOOR - 8 TOTAL = 277	<b>BUILDING 3</b> GROUND FLOOR - DOORS 40"/2 = 200; STAIRS 62"/3 = 207; TOTAL = 407 FIRST FLOOR - DOORS 358"/2 = 1790 SECOND FLOOR - STAIRS 42"/3 = 140
<b>BUILDING 4</b> GROUND FLOOR - 0 FIRST FLOOR - 1900 SECOND FLOOR - 0 TOTAL = 1900	<b>BUILDING 4</b> GROUND FLOOR - 0 FIRST FLOOR - DOORS 408"/2 = 2040 SECOND FLOOR - 0
<b>BUILDING 5</b> GROUND FLOOR - 114 FIRST FLOOR - 468 SECOND FLOOR - 227 TOTAL = 809	<b>BUILDING 5</b> GROUND FLOOR - DOORS 170"/2 = 850 FIRST FLOOR - DOORS 294"/2 = 1470 SECOND FLOOR - DOORS 68"/2 = 340; STAIRS 48"/3 = 160; TOTAL = 500

MAXIMUM TRAVEL DISTANCE TO EXIT: 200' (E), 250' (A), SPRINKLER PROTECTED



CODE DATA						
<b>APPLICABLE CODES:</b> INTERNATIONAL BUILDING CODE - 2000 EDITION BOCA NATIONAL BUILDING CODE - 1999 EDITION NFPA 101 LIFE SAFETY CODE - 2003 EDITION	<b>CONSTRUCTION TYPES:</b> BUILDING 1: 3B NONCOMBUSTIBLE/COMBUSTIBLE, UNPROTECTED BUILDING 2: 5B COMBUSTIBLE, UNPROTECTED BUILDING 3: 3B NONCOMBUSTIBLE/COMBUSTIBLE, UNPROTECTED BUILDING 4: 2C (BOCA) 2B (IBC) NONCOMBUSTIBLE, UNPROTECTED BUILDING 5: 3B NONCOMBUSTIBLE/COMBUSTIBLE, UNPROTECTED					
<b>USE GROUP CLASSIFICATIONS:</b> BUILDING 1: E - EDUCATIONAL (CLASSROOMS) B - BUSINESS (ADMINISTRATIVE OFFICES)	<b>FULL AUTOMATIC SPRINKLER SYSTEM</b>					
BUILDING 2: A2 - ASSEMBLY (CAFETERIA) A3 - ASSEMBLY (MEDIA) E - EDUCATIONAL (CLASSROOMS)						
BUILDING 3: E - EDUCATIONAL (CLASSROOMS) B - BUSINESS (ADMINISTRATIVE OFFICES)						
BUILDING 4: A3 - ASSEMBLY (GYMNASIUM) E - EDUCATIONAL						
BUILDING 5: A1 - THEATER E - EDUCATIONAL F1 - FACTORY (SHOP AREAS)						
BUILDING AREAS						
	BLDG 1	BLDG 2	BLDG 3	BLDG 4	BLDG 5	GROSS
GROUND FLOOR	8,362	1,898	2,777	0	7,558	20,595
FIRST FLOOR	39,322	19,836	18,077	20,486	7,569	105,290
SECOND FLOOR	39,409	7,772	1,986	0	3,221	52,388
THIRD FLOOR	12,373	0	0	0	0	12,373
TOTAL	99,466	29,506	22,840	20,486	16,348	190,646



**3.0** OVERALL THIRD FLOOR PLAN  
 SCALE: 1" = 24'-0" (1:288)

WALL RATING KEY	
	3 HOUR RATED
	2 HOUR RATED
	1 HOUR RATED
	SMOKE SEPARATION

