



# School Safety Public Input Session

June 12, 2018

# Agenda

- Opening Remarks
- Social & Emotional Learning
- Overview of Current Safety Policies and Procedures
- Enhanced School Security
- New Safety Procedures beginning August 7
- Public Input Gathering at Tables
- Closing



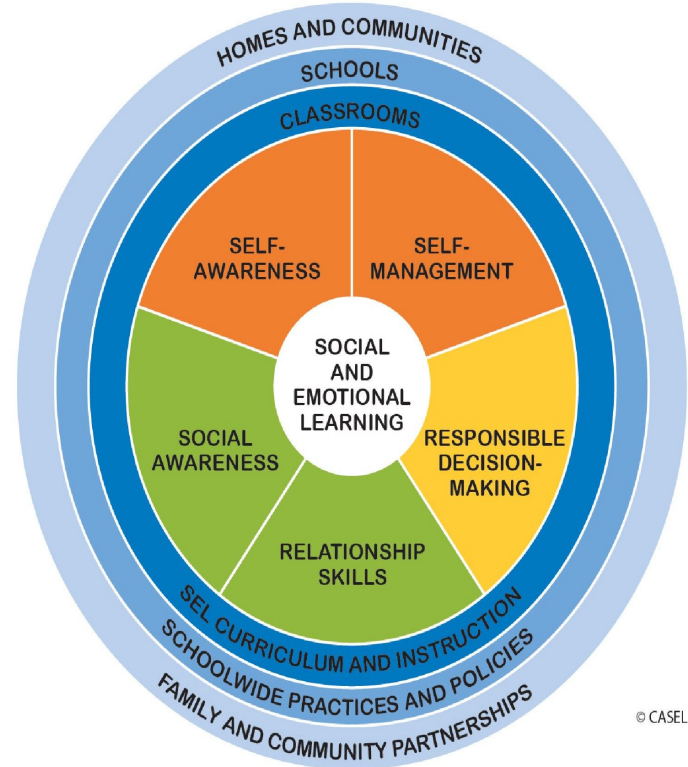
# Opening Remarks

- Welcome and Introductions
- School, Community, City/Public Safety Partnerships
- A comprehensive approach to School Safety
- Purpose of Community Input Session



# Social and Emotional Learning

- \*CASEL Framework-Collaborative for Academic, Social, and Emotional Learning
- \*CLASS (CONNECTING LEARNING ASSURES SUCCESSFUL STUDENTS)-Cognitive Development and Curriculum Design and Instruction
- \*Counseling Services-WWS K-12  
MTSS/PBIS building teams
- \*ASPIRE/4 County Services
- \*DESSA-The Devereux Student Strengths Assessment
- \*Panorama-Climate/Culture Survey
- \*Community Partnerships and Planning  
Alignment with Stakeholders



# Current Safety Policies & Procedures

- Collaboration with Westfield Police Department
- Armed WPD School Resource Officers at WHS and WMS
- District Safety Committee with School Safety Specialists
- Safety drills/flowcharts for every drill (All Hazards Approach)
- Safety drills observed by WPD and scored on a rubric
- Unannounced school safety audits by WPD
- Use of schools for active shooter training by WPD
- TIPS line: See something, Say something, Human Detectors
- ALiCE lockdown response procedures



## **ALERT**

Initial Alert may be a gunshot, PA announcement, etc...  
Avoid code words.

## **LOCKDOWN**

If Evacuation is not a safe option, barricade entry points.  
Prepare to Evacuate or Counter if needed.

## **INFORM**

Communicate real time information on shooter location.  
Use clear and direct language using any communication means possible.

## **COUNTER**

As a last resort, distract shooters ability to shoot accurately.  
Move toward exits while making noise, throwing objects,  
or adults swarm shooter.

## **EVACUATE**

Run from danger when safe to do so using non-traditional exits if necessary. Rallying point should be predetermined.

	=	<b>Alert</b>
	=	<b>Lockdown</b>
	=	<b>Inform</b>
	=	<b>Counter</b>
	=	<b>Evacuate</b>

## **What is ALICE?**

- **ALICE** training changes how schools respond to intruders in the school.
- **ALICE** is a set of proactive strategies that provide options for everyone to be safe.
- **ALICE** is not sequential.





# New Safety Procedures Beginning August 7

- Additional WPD Armed School Resource Officer
- Schools as WPD substations
- School camera access for WPD vehicles
- Increased frequency of safety audits by WPD
- SafeVisitor visitor management system & enhanced visitor background checks
- Enhanced ALiCE training with students and staff members - *Hamilton County Sheriff's Deputy Jon Tindal*
- School building entrance/front office designs
- Review of school access points/supervision
- Trauma packs/supplies for school nurses as recommended by Riverview Hospital





# Table Discussion Groups

Purpose of Table Discussions

Table Facilitation Process

Discussion Questions

1. What questions do you have about current safety policies and procedures?  
What would you like to know more about?
2. What are your concerns about safety?
3. What ideas or suggestions do you have for us to consider safety and security?



# Thank you for attending!!!

## Next Steps

[www.k12.in.us](http://www.k12.in.us)

Inside the Rock podcast

July 19 Symposium 6:30 p.m. at WHS Auditorium

Contact Info: [grates@wws.k12.in.us](mailto:grates@wws.k12.in.us) (Dr. Sherry Grate)

[baldwinc@wws.k12.in.us](mailto:baldwinc@wws.k12.in.us) (Chris Baldwin)

