

# C

## Summer Songs

### Star Wars Theme

Musical notation for the Star Wars Theme in G major, 4/4 time. The melody consists of a series of eighth notes with triplets: G4, A4, B4, C5, D5, E5, F5, G5, A5, B5, C6, D6, E6, F6, G6, A6, B6, C7. The piece ends with a double bar line and repeat dots.

### Duel of the Fates (from Star Wars Episode 1)

Musical notation for the Duel of the Fates in G major, 4/4 time. The melody starts with a quarter rest, followed by eighth notes: G4, A4, B4, C5, D5, E5, F5, G5, A5, B5, C6, D6, E6, F6, G6, A6, B6, C7. The piece ends with a double bar line and repeat dots.

### Star Trek Theme (original)

Musical notation for the Star Trek Theme (original) in G major, 4/4 time, marked *slowly*. The melody starts with a quarter rest, followed by eighth notes: G4, A4, B4, C5, D5, E5, F5, G5, A5, B5, C6, D6, E6, F6, G6, A6, B6, C7. The piece ends with a double bar line and repeat dots.

Musical notation for the Star Trek Theme (original) in G major, 4/4 time, marked *faster*. The melody starts with a quarter rest, followed by eighth notes: G4, A4, B4, C5, D5, E5, F5, G5, A5, B5, C6, D6, E6, F6, G6, A6, B6, C7. The piece ends with a double bar line and repeat dots.

Musical notation for the Star Trek Theme (original) in G major, 4/4 time, marked *faster*. The melody starts with a quarter rest, followed by eighth notes: G4, A4, B4, C5, D5, E5, F5, G5, A5, B5, C6, D6, E6, F6, G6, A6, B6, C7. The piece ends with a double bar line and repeat dots.

### Lord of the Rings - Shire Theme

Musical notation for the Lord of the Rings - Shire Theme in G major, 2/4 time. The melody starts with a quarter rest, followed by eighth notes: G4, A4, B4, C5, D5, E5, F5, G5, A5, B5, C6, D6, E6, F6, G6, A6, B6, C7. The piece ends with a double bar line and repeat dots.

Musical notation for the Lord of the Rings - Shire Theme in G major, 2/4 time. The melody starts with a quarter rest, followed by eighth notes: G4, A4, B4, C5, D5, E5, F5, G5, A5, B5, C6, D6, E6, F6, G6, A6, B6, C7. The piece ends with a double bar line and repeat dots.

### Lord of the Rings - Fellowship Theme

Musical notation for the Lord of the Rings - Fellowship Theme in G major, 4/4 time. The melody starts with a quarter rest, followed by eighth notes: G4, A4, B4, C5, D5, E5, F5, G5, A5, B5, C6, D6, E6, F6, G6, A6, B6, C7. The piece ends with a double bar line and repeat dots.

Musical notation for the Lord of the Rings - Fellowship Theme in G major, 4/4 time. The melody starts with a quarter rest, followed by eighth notes: G4, A4, B4, C5, D5, E5, F5, G5, A5, B5, C6, D6, E6, F6, G6, A6, B6, C7. The piece ends with a double bar line and repeat dots.

Lord of the Rings - One Ring to Rule Them All

1

5

Detailed description: This block contains the first two staves of music for 'Lord of the Rings - One Ring to Rule Them All'. The first staff starts at measure 1 and ends at measure 4. The second staff starts at measure 5 and ends at measure 8. The music is in 4/4 time and features a melody with eighth and sixteenth notes, often beamed together. There are some accidentals, including a flat in the second staff.

Monsters Inc.

1

7

13

19

25

28

Detailed description: This block contains six staves of music for 'Monsters Inc.'. The first staff starts at measure 1 and ends at measure 6. The second staff starts at measure 7 and ends at measure 12. The third staff starts at measure 13 and ends at measure 18. The fourth staff starts at measure 19 and ends at measure 24. The fifth staff starts at measure 25 and ends at measure 30. The sixth staff starts at measure 28 and ends at measure 32. The music is in 4/4 time and features a melody with eighth and sixteenth notes, often beamed together. There are some accidentals, including flats and a sharp.

Theme from Up

1

9

Detailed description: This block contains two staves of music for 'Theme from Up'. The first staff starts at measure 1 and ends at measure 8. The second staff starts at measure 9 and ends at measure 16. The music is in 3/4 time and features a melody with quarter and eighth notes.

Harry Potter

1

9

Spongebob Squarepants

1

Sponge- bob Square pants!

8

Sponge- bob Square pants!

Pirates of the Carribean

1

8

16

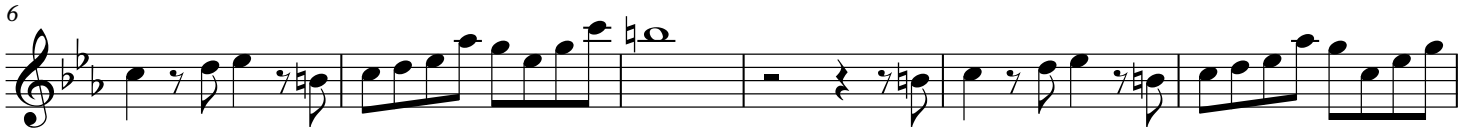
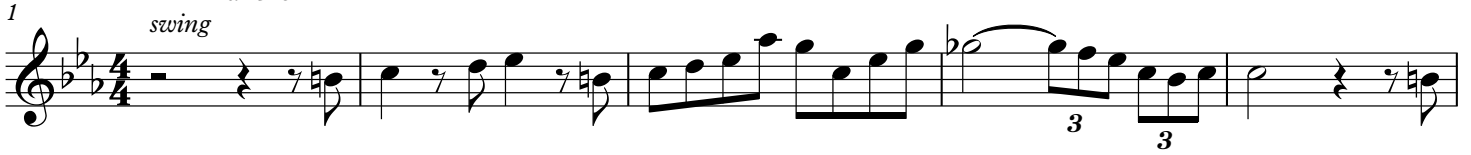
24

Spiderman (original)

1

6

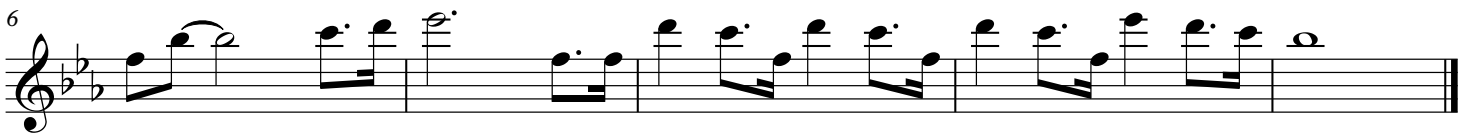
Pink Panther  
*swing*



The Simpsons



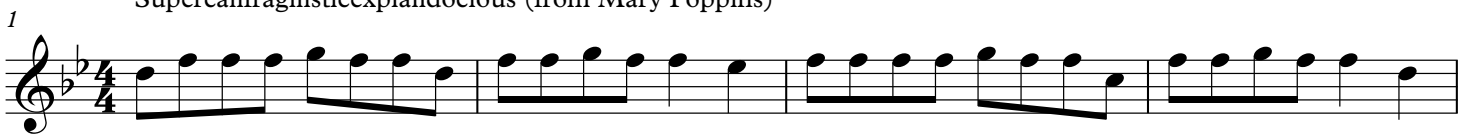
Indiana Jones



The Flintstones



Supercalifragilisticexpialidocious (from Mary Poppins)



Let It Go (from Frozen)

1

6

12

Angry Birds

1

5

Subway Surfers

1

8

The Backyardigans

1

10

6

Super Mario Bros.

1

Measures 1-5 of the Super Mario Bros. melody. The key signature has two flats (B-flat and E-flat), and the time signature is 4/4. The melody starts with a quarter note G4, followed by eighth notes A4, B-flat4, and C5. Measure 2 has a quarter rest, a quarter note D5, and a quarter rest. Measure 3 has a quarter note E5, a quarter rest, and a quarter note F5. Measure 4 has eighth notes G5, A5, B-flat5, and C6. Measure 5 has eighth notes D6, E6, F6, and G6.

6

Measures 6-10 of the Super Mario Bros. melody. Measure 6 has eighth notes G5, A5, B-flat5, and C6. Measure 7 has a quarter note D6, a quarter rest, and a quarter note E6. Measure 8 has eighth notes F6, G6, A6, and B-flat6. Measure 9 has eighth notes C7, D7, E7, and F7. Measure 10 has eighth notes G7, A7, B-flat7, and C8.

11

Measures 11-14 of the Super Mario Bros. melody. Measure 11 has eighth notes G7, A7, B-flat7, and C8. Measure 12 has eighth notes D8, E8, F8, and G8. Measure 13 has eighth notes A8, B-flat8, C9, and D9. Measure 14 has eighth notes E9, F9, G9, and A9.

15

Measures 15-19 of the Super Mario Bros. melody. Measure 15 has eighth notes B-flat9, C10, D10, and E10. Measure 16 has eighth notes F10, G10, A10, and B-flat10. Measure 17 has eighth notes C11, D11, E11, and F11. Measure 18 has a quarter note G11, a quarter rest, and a quarter note A11. Measure 19 has eighth notes B11, C12, D12, and E12.

20

Measures 20-23 of the Super Mario Bros. melody. Measure 20 has eighth notes F12, G12, A12, and B-flat12. Measure 21 has eighth notes C13, D13, E13, and F13. Measure 22 has a quarter note G13, a quarter rest, and a quarter note A13. Measure 23 has eighth notes B13, C14, D14, and E14.

24

Measures 24-27 of the Super Mario Bros. melody. Measure 24 has eighth notes F14, G14, A14, and B-flat14. Measure 25 has eighth notes C15, D15, E15, and F15. Measure 26 has a quarter note G15, a quarter rest, and a quarter note A15. Measure 27 has a quarter note B15, a quarter rest, and a quarter note C16.

Cocomelon - Yes Yes Vegetables Song

1

Measures 1-8 of the Cocomelon - Yes Yes Vegetables Song melody. The key signature has two flats (B-flat and E-flat), and the time signature is 6/8. The melody starts with a half note G4, followed by quarter notes A4, B4, and C5. Measure 2 has a half note D5, followed by quarter notes E5, F5, and G5. Measure 3 has a half note A5, followed by quarter notes B5, C6, and D6. Measure 4 has a half note E6, followed by quarter notes F6, G6, and A6. Measure 5 has a half note B6, followed by quarter notes C7, D7, and E7. Measure 6 has a half note F7, followed by quarter notes G7, A7, and B7. Measure 7 has a half note C8, followed by quarter notes D8, E8, and F8. Measure 8 has a half note G8, followed by quarter notes A8, B8, and C9.

9

Measures 9-16 of the Cocomelon - Yes Yes Vegetables Song melody. Measure 9 has a half note D9, followed by quarter notes E9, F9, and G9. Measure 10 has a half note A9, followed by quarter notes B9, C10, and D10. Measure 11 has a half note E10, followed by quarter notes F10, G10, and A10. Measure 12 has a half note B10, followed by quarter notes C11, D11, and E11. Measure 13 has a half note C11, followed by quarter notes D11, E11, and F11. Measure 14 has a half note D11, followed by quarter notes E11, F11, and G11. Measure 15 has a half note E11, followed by quarter notes F11, G11, and A11. Measure 16 has a half note F11, followed by quarter notes G11, A11, and B11.