

LEA Name : Scranton SD
Address : 425 N Washington Ave
Scranton , PA 18503

County : Lackawanna
AUN Number : 119357402
LEA Type : SD

Annual Financial Report Accuracy Certification Statement

For Fiscal Year Ending
6/30/2017

Pennsylvania Department of Education
&
Office of Comptroller Operations
PDE-2056: Intermediate Unit
PDE-2057: School District, AVTS/CTC, Charter School,
and Special Program Jointure

CERTIFICATION: By signing this page I agree that the electronic data submitted is a complete and accurate statement of the financial operations and status of the local education agency for the fiscal year. It has been prepared in accordance with generally accepted accounting principles and established Commonwealth of PA reporting guidelines.


Chief School Administrator Signature

Date 4-3-19


Board Secretary Signature

Date 4-3-19

Pat Laffey

(570)348-3443 Ext :

Contact Person

Contact Person Telephone Number

pat.laffey@scrsd.org

(570)348-3451

Contact Person E-mail Address

Contact Person Fax Number

Audit Certification

Annual Financial Report:

For Fiscal Year Ending 6/30/2017

(Pursuant to PA School Code Section 218(b))

LEA Name : Scranton SD
AUN Number : 119357402
County : Lackawanna

Audit Certification Due: 12/31/2017
--

This certification is applicable to the Annual Financial Report data submitted through the Consolidated Financial Reporting System on: 4-3-19
Date

Auditing Firm:

Auditor Contact Name:
Auditor Phone:
Auditor E-mail:

CERTIFICATION: By signing this page I agree that the financial statements of the school have been properly audited as noted above pursuant to Article XXIV, and in the auditor's professional opinion, the Annual Financial Report (PDE-2057) submitted on the date referenced is materially consistent with the audited financial statements.

Chief School Administrator

Pat Laffey
Signature Date 4/3/19

Board Secretary

Virginia Orso
Signature Date 4-3-19

Pat Laffey

(570)348-3443

Ext :

Contact Person

Contact Person Telephone Number

pat.laffey@scrscd.org

(570)348-3451

Contact Person E-mail Address

Contact Person Fax Number

LEA Name : Scranton SD
Address : 425 N Washington Ave
Scranton, PA 18503

County : Lackawanna
AUN Number : 119357402
LEA Type : SD

Annual Financial Report Accuracy Certification Statement

For Fiscal Year Ending
6/30/2017

Pennsylvania Department of Education
&
Office of Comptroller Operations

PDE-2056: Intermediate Unit
PDE-2057: School District, AVTS/CTC, Charter School,
and Special Program Jointure

CERTIFICATION: By signing this page I agree that the electronic data submitted is a complete and accurate statement of the financial operations and status of the local education agency for the fiscal year. It has been prepared in accordance with generally accepted accounting principles and established Commonwealth of PA reporting guidelines.

Deanna H. Yarbrough, Ed.S.

Chief School Administrator Signature

3/18/19

Date

Virginia Orr

Board Secretary Signature

Pat Laffey

(570)348-3443 Ext:

Contact Person

Contact Person Telephone Number

pat.laffey@scrasd.org

(570)348-3451

Contact Person E-mail Address

Contact Person Fax Number

Audit Certification
Annual Financial Report:
For Fiscal Year Ending 6/30/2017
(Pursuant to PA School Code Section 218(b))

LEA Name : Scranton SD
AUN Number : 119357402
County : Lackawanna

Audit Certification Due: 12/31/2017
--

This certification is applicable to the Annual Financial Report data submitted through the Consolidated Financial Reporting System on: _____
Date _____

Auditing Firm:

Auditor Contact Name:
Auditor Phone:
Auditor E-mail:

CERTIFICATION: By signing this page I agree that the financial statements of the school have been properly audited as noted above pursuant to Article XXIV, and in the auditor's professional opinion, the Annual Financial Report (PDE-2057) submitted on the date referenced is materially consistent with the audited financial statements.

Chief School Administrator

Signature *Pat Laffey* Date 3/8/19

Pat Laffey

Contact Person _____

pat.laffey@scrsd.org

Contact Person E-mail Address _____

Board Secretary

Signature *Virginia Orr* Date 3/8/19

(570)348-3443

Ext: _____

Contact Person Telephone Number _____

(570)348-3451

Contact Person Fax Number _____

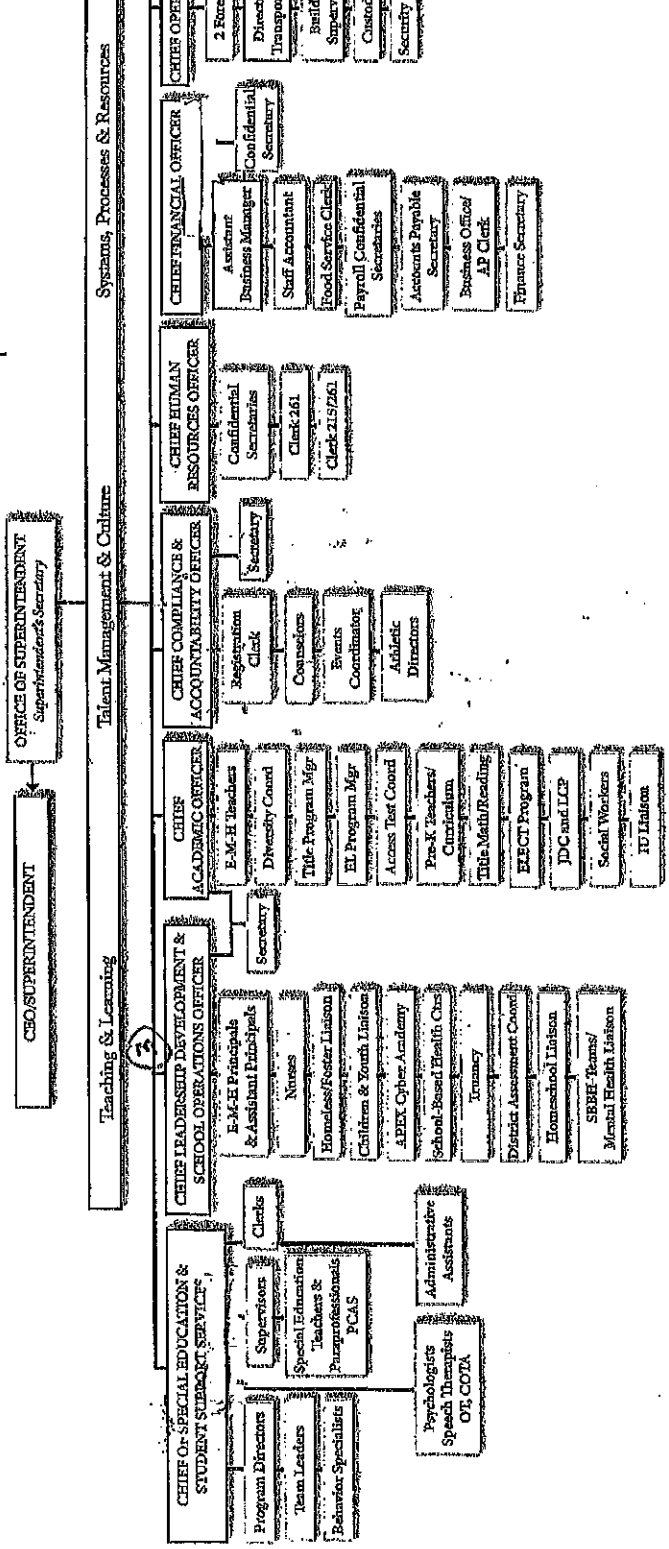
SCHEDULE TO CALCULATE PERCENTAGE OF OTHER COSTS ADJUSTED FOR THE RESTRICTED RATE

PERIOD ENDING: June 30, 2017

Scranton School District

Department		Staff Names	Position	Indirect Salaries	Indirect Fringes	Total Salaries & Fringes	Total Adjusted Amounts	Restricted Rate Adjustments
Executive Offices - Indirect Salaries and Fringe Benefits								
2380 - Office of the Superintendent		Alexis Kilian	Superintendent	\$ 180,805.06	\$ 104,213.00	\$ 285,018.06		
2380 - Office of the Superintendent		Molly Abadala	Superintendent Secretary	\$ 35,671.86	\$ 20,563.00	\$ 56,234.86		
Subtotal 2380 - Office of the Superintendent Services				\$ 216,476.92	\$ 124,806.00	\$ 341,282.92		
2511 - Office of Chief Financial Officer								
2511 - Office of Chief Financial Officer		Gregg Sunday	Chief Financial Officer	\$ 120,976.00	\$ 71,771.61	\$ 192,747.61		
2511 - Office of Chief Financial Officer		Cathy Delontra	Chief Secretary	\$ 49,083.00	\$ 29,398.37	\$ 78,481.37		
Subtotal 2511 - Supervision of Fiscal Services - Head				\$ 170,059.00	\$ 98,129.98	\$ 268,188.98		
2821 - Office of Chief Information Officer								
2821 - Office of Chief Information Officer		Joe Brazzi	Chief Information Officer	\$ 89,073.87	\$ 54,165.47	\$ 143,241.34		
Subtotal 2821 - Supervision of Information Technology - Head				\$ 89,073.87	\$ 54,165.47	\$ 143,241.34		
2831 - Chief Human Resources Officer								
2831 - Chief Human Resources Officer		Bill Gayward	Chief HR Officer	\$ 87,184.00	\$ 57,514.00	\$ 144,698.00		
Subtotal 2831 - Supervision of Staff Services - Head				\$ 87,184.00	\$ 57,514.00	\$ 144,698.00		
2611 - Office of Chief Operations Officer								
2611 - Office of Chief Operations Officer		Jeff Brazzi	Chief Operations Officer	\$ 82,335.00	\$ 48,320.10	\$ 130,655.10		
2611 - Office of Chief Operations Officer		Paula Giordano	COO Secretary	\$ 44,510.97	\$ 31,721.42	\$ 76,238.39		
Subtotal 2611 - Supervision of Op. Maint. Of Plant Svcs. - Head				\$ 126,845.97	\$ 78,041.52	\$ 204,893.49		
Total Adjusted Salaries & Fringes								
				\$ 689,641.76	\$ 412,662.97	\$ 1,102,304.73		
Total Salaries & Fringe Benefits				\$ 73,738,235.96	\$ 47,168,095.24	\$ 120,906,331.20		
Rate to Apply to Operational Expenses								1.00%
Unrestricted Indirect Related Operation Expenses Adjusted for the Restricted Rate								
				Total	Operational Exp.	Restricted Operational Exp.	Total Adjusted Amounts	
2380 - Office of the Superintendent				\$ 26,117.49	\$ -	\$ 26,117.49		
2372-2390 Support Service Business				\$ 177,469.00	\$ 1,174.88	\$ 178,643.88		
2832-2839 Staff Services				\$ 15,267.00	\$ 157.37	\$ 15,424.37		
2618-2690 Operation and Maintenance of Plant Services				\$ 4,749,606.38	\$ 47,436.06	\$ 4,797,042.44		
Total Unrestricted Indirect Costs Adjusted for the Restricted Rate				\$ 1,978,469.87	\$ 126,798.31	\$ 2,105,268.18		
Subtotal Salaries and Fringe Benefits Adjusted for the Restricted Rate								
				\$ 1,102,304.73	\$ 412,662.97	\$ 1,514,967.70		
Total Unrestricted Indirect Costs Adjusted for the Restricted Rate				\$ 1,978,469.87	\$ 126,798.31	\$ 2,105,268.18		
				\$ 5,957,966.48	\$ 3,839,697.25	\$ 9,797,663.73		

ORGANIZATIONAL CHART



Val Number	Description	Justification
13040	REG: The amount reported in 9120 representing refunded bond proceeds is not consistent with the amount in 5120 for refunded bond payments. Please correct or enter a justification. REG 9120, GOV Funds: \$98,885,000.00 REG 5120, GOV Funds: \$75,600,000.00	More bonds were refunded than were fully paid off.
30685	Revenue Detail: Current Tax Revenue amount cannot exceed 50% variance from prior year amount. Correct the data or enter a justification. 6153, Current AFR Rev Detail: \$890,623.40 6153, Prior AFR Rev Detail: \$486,642.28	The Scranton School District had increased Real Estate Transfer Tax Collections in fiscal year 16-17 due to a few large property sale transactions that are not experience in a typical year.
30730	Revenue Detail - Fund 10: Data has been entered for Revenue code 9910 - Other Financing Sources. Please provide a description of this entry. REV Detail 9910, Fund 10: \$601,742.00	Insurance Stop/Loss revenue
41150	Expenditure Detail - There is an entry in function 5150- 990 object "Other". Please explain what constitutes "Other". Expenditure 5150-990, Fund 40: \$1,809,223.00	Bond discounts on refunded bonds.
50400	SESS - 2120 Guidance Services: SESS Schedule amounts for Special Education vary from prior year by 40% or more. Correct the data or enter a justification. SESS Schedule 2120: \$399,966.97 Prior Year SESS Schedule 2120: \$233,199.39	16/17 School year the Scranton School District experienced an increase in its Special Education population of 250 new students as well as a contractual salary increase. Including step movement plus 1%.
50420	SESS - 2150 Speech Pathology and Audiology Services: SESS Schedule amounts for Special Education vary from prior year by 40% or more. Correct the data or enter a justification. SESS Schedule 2150: \$169,925.95 Prior Year SESS Schedule 2150: \$12,024.73	Correction: 15/16 speech teachers were coded to incorrect account codes. This along with the Special Education population increase of 250 new students as well as contractual salary increase, including step movement plus 1%.
50460	SESS - 2420 Medical Services: SESS Schedule amounts for Special Education vary from prior year by 40% or more. Correct the data or enter a justification. SESS Schedule 2420: \$130,966.06 Prior Year SESS Schedule 2420: \$71,656.99	Correction 15/16 LPN's coded to incorrect account codes. This along with the Special Education population increase of 250 new students as well as contractual salary increase, including step movement plus 1%.

Amounts Expressed in Whole Dollars

Liabilities And Deferred Inflows Of Resources And Fund Balances

Liabilities

0400 Due to Other Funds 4,126,600

0411 Due to Other Governments

0412 Due to Primary Government

0413 Due to Component Unit

0420 Accounts Payable 1,254,744

0430 Contracts Payable

0440 Current Portion of Long-Term Debt

0450 Short-Term Payables

0461 Accrued Salaries and Benefits 7,457,548

0462 Payroll Deductions and Withholding 1,684,702

0480 Unearned Revenues

0490 Other Current Liabilities 19,000,000

Total Liabilities \$33,523,594

0950 Deferred Inflows of Resources 2,150,739

Fund Balances

0810 Nonspendable Fund Balance

0820 Restricted Fund Balance 35,698,564

0830 Committed Fund Balance

0840 Assigned Fund Balance

(30,269,905)

Total Fund Balances \$5,428,659

Total Liabilities, Deferred Inflows Of Resources And Fund Balances \$41,102,992

General Fund (10) Public Purpose Trust (27) Other Compt Approved (28) Athletic / Activity (29) Capital Reserve (690) 1850 (31)

Amounts Expressed in Whole Dollars

Page - 4 of 4

Liabilities And Deferred Inflows Of Resources And Fund Balances
 Liabilities

	Capital Reserve (1431) (32)	Other Capital Projects Fund (39)	Debt Service (40)	Permanant (90)	Total Governmental Funds
--	--------------------------------	----------------------------------	-------------------	----------------	--------------------------

0400 Due to Other Funds					
0411 Due to Other Governments					
0412 Due to Primary Government					4,126,600
0413 Due to Component Unit		(2,135,049)			(2,135,049)
0420 Accounts Payable					
0430 Contracts Payable					
0440 Current Portion of Long-Term Debt					1,254,744
0450 Short-Term Payables					
0461 Accrued Salaries and Benefits					
0462 Payroll Deductions and Withholding					
0480 Unearned Revenues					7,457,548
0490 Other Current Liabilities					1,684,702

Total Liabilities

0950 Deferred Inflows of Resources					19,000,000
Fund Balances					\$31,388,545

0810 Nonspendable Fund Balance					2,150,739
0820 Restricted Fund Balance					
0830 Committed Fund Balance					
0840 Assigned Fund Balance		15,746,406	6,034,716		35,698,564
0850 Unassigned Fund Balance	288,322				21,781,122
Total Fund Balances	288,322				288,322

Total Liabilities, Deferred Inflows Of Resources And Fund Balances	\$288,322	\$15,746,406	\$6,034,716		(30,269,905)
	\$288,322	\$13,611,357	\$6,034,716		\$27,498,103
					\$61,037,387

	Amounts Expressed in Whole Dollars	General Fund (10)	Public Purpose Trust (27)	Other Compt Approved (28)	Athletic / Activity (29)	Capital Reserve (30)
Revenues						
6000 Revenue from Local Sources		63,306,605				
7000 Revenue from State Sources		77,748,613				
8000 Revenue from Federal Sources		5,807,324				
Total Revenues		\$146,862,542				
Expenditures						
1000 Instruction		101,571,721				
2000 Support Services		41,795,733				
3000 Operation of Non-Instructional Services		1,595,038				
4000 Facilities Acquisition, Construction and Improvement Services						
5110 Debt Service		9,441,846				
5130 Refund of Prior Year Revenues / Receipts						
Total Expenditures		\$154,404,338				
Excess (Deficiency) Of Revenues Over Expenditures		(\$7,541,796)				
Other Financing Sources (Uses)						
9110 Face Value of Bonds Issued						
9120 Proceeds from Refunding of Bonds						
9130 Bond Premiums						
9200 Proceeds from Extended-Term Financing						
9300 Interfund Transfers - IN						
9400 Sale of or Compensation for Loss of Fixed Assets						
9710 Transfers from Component Units						
9720 Transfers from Primary Governments						
9910 Other Financing Sources Not Listed in the 9000 Series		601,742				
9990 Insurance Recoveries						
5120 Debt Service - Refunded Bonds						
5150 Bond Discounts						
5200 Interfund Transfers - Out		1,146,418				
5300 Transfers Out to Component Units/Primary Governments						
Total Other Financing Sources (Uses)		(\$544,676)				

Amounts Expressed in Whole Dollars	Capital Reserve (1431) (32)	Other Capital Projects Fund (39)	Debt Service (40)	Permanent (90)	Total Governmental Funds
Revenues					
6000 Revenue from Local Sources	2,440	11,891	8,223		63,329,159
7000 Revenue from State Sources					77,748,613
8000 Revenue from Federal Sources					5,807,324
Total Revenues	\$2,440	\$11,891	\$8,223		\$146,885,096
Expenditures					
1000 Instruction		301,389			101,873,110
2000 Support Services					41,795,733
3000 Operation of Non-Instructional Services		497,796	2,800		2,095,634
4000 Facilities Acquisition, Construction and Improvement Services		1,121,438			1,121,438
5110 Debt Service		13,356	9,619,171		19,074,373
5130 Refund of Prior Year Revenues / Receipts					
Total Expenditures	\$2,440	\$1,933,979	\$9,621,971		\$165,960,288
Excess (Deficiency) Of Revenues Over Expenditures		(\$1,922,088)	(\$9,613,748)		(\$19,075,192)
Other Financing Sources (Uses)					
9110 Face Value of Bonds Issued			98,885,000		98,885,000
9120 Proceeds from Refunding of Bonds			2,368,491		2,368,491
9130 Bond Premiums					
9200 Proceeds from Extended-Term Financing					
9300 Interfund Transfers - IN		12,605,768	26,400		12,632,168
9400 Sale of or Compensation for Loss of Fixed Assets					
9710 Transfers from Component Units					
9720 Transfers from Primary Governments					
9910 Other Financing Sources Not Listed in the 9000 Series					601,742
9990 Insurance Recoveries					
5120 Debt Service - Refunded Bonds			75,600,000		75,600,000
5150 Bond Discounts			1,809,223		1,809,223
5200 Interfund Transfers - Out			12,605,768		13,752,186
5300 Transfers Out to Component Units/Primary Governments					
Total Other Financing Sources (Uses)			\$12,605,768	\$11,264,900	\$23,325,992

Amounts Expressed In Whole Dollars	General Fund	Public Purpose Trust	Other Compt Approved	Athletic / Activity	Capital Reserve (690)
Special And Extraordinary Items					
9920 Special Items – Gains	(10)				1850
9930 Extraordinary Items – Gains		(27)		(29)	(31)
5520 Special Items – Losses			(28)		
5530 Extraordinary Items – Losses					
Net Change In Fund Balances					
Fund Balance					
0001 Fund Balance - Beginning of Fiscal Year	13,515,132				
Fund Balance - End Of Year	\$5,428,660				

Amounts Expressed in Whole Dollars		Capital Reserve (1431)	Other Capital Projects Fund (39)	Debt Service (40)	Permanent (90)	Total Governmental Funds
Special And Extraordinary Items						
9920	Special Items – Gains					
9930	Extraordinary Items – Gains					
5520	Special Items – Losses					
5530	Extraordinary Items – Losses					
Net Change In Fund Balances		\$2,440	\$10,693,680	\$1,651,152		\$4,250,800
Fund Balance						
0001	Fund Balance - Beginning of Fiscal Year	285,882	5,062,726	4,383,564		23,247,304
	Fund Balance - End Of Year	\$288,322	\$15,746,406	\$6,034,716		\$27,498,104

Amounts Expressed in Whole Dollars		Food Service (51)	Child Care Operations (52)	Other Enterprise (58)	TOTAL	Internal Service (60)
Assets And Deferred Outflows Of Resources						
Current Assets						
0100	Cash and Cash Equivalents	1,196,855		413,076	1,609,931	529,797
0110	Investments					
0130	Due From Other Funds	1,951,150			1,951,150	
0141	Due From Other Governments					
0142	State Revenue Receivable					
0143	Federal Revenue Receivable					
0146	Due from Primary Government					
0147	Due from Component Unit					
0150	Other Receivables					
0170	Inventories	56,438			56,438	
0180	Prepaid Expenses (Expenditures)					
0190	Other Current Assets					
Total Current Assets		\$3,204,443		\$413,076	\$3,617,519	\$529,797
Noncurrent Assets						
0211	Land					
0212	Site Improvements (Net)					
0220	Buildings and Building Improvements (Net)	52,992			52,992	
0230	Machinery, Equipment and Furniture (Net)	489,259		31,066	520,325	
0250	Construction In Progress					
0260	Long Term Prepayments					
0290	Other Noncurrent Assets					
Total Noncurrent Assets		\$542,251		\$31,066	\$573,317	
0910	Deferred Outflows of Resources					
Total Assets And Deferred Outflows Of Resources		\$3,746,694		\$444,142	\$4,190,836	\$529,797

	Amounts Expressed in Whole Dollars	Food Service (51)	Child Care Operations (52)	Other Enterprise (58)	TOTAL	Internal Service (60)
Liabilities And Deferred Inflows Of Resources And Net Position						
Current Liabilities						
0400 Due to Other Funds	24,000				24,000	
0411 Due to Other Governments				73,000	73,000	
0413 Due to Component Unit						
0420 Accounts Payable						
0430 Contracts Payable						
0440 Current Portion of Long-Term Debt						
0450 Short-Term Payables						
0461 Accrued Salaries and Benefits						
0462 Payroll Deductions and Withholding						
0480 Unearned Revenues						
0490 Other Current Liabilities						
Total Current Liabilities	\$24,000			\$73,000	\$97,000	
Noncurrent Liabilities						
0510 Bonds Payable						
0520 Extended-Term Financing Agreements Payable						
0530 Lease-Purchase Obligations						
0540 Accumulated Compensated Absences						
0550 Authority Lease Obligations						
0560 Other Post-Employment Benefits (OPEB)						
0570 Net Pension Liability						
0599 Other Noncurrent Liabilities						
Total Noncurrent Liabilities	\$24,000			\$73,000	\$97,000	
Total Liabilities						
0950 Deferred Inflows of Resources						
Net Position						
0791 Net Investment in Capital Assets	489,259			31,066	520,325	
0008 Restricted Net Position (0792 - 0798)						
0799 Unrestricted Net Position	3,233,435			340,076	3,573,511	529,797
Total Net Position	\$3,722,694			\$371,142	\$4,093,836	\$529,797
Total Liabilities And Deferred Inflows Of Resources And Net Position	\$3,746,694			\$444,142	\$4,190,836	\$529,797

Amounts Expressed in Whole Dollars	Food Service (51)	Child Care Operations (52)	Other Enterprise (58)	TOTAL	Internal Service (60)
Operating Revenues					
6600 Food Service Revenue	242,437			242,437	
0071 Charges for Services			10,688	10,688	
0072 Other Operating Revenue			79,137	79,137	
Total Operating Revenues	\$242,437		\$89,825	\$332,262	
Operating Expenses					
100 Personnel Services - Salaries	147,827			147,827	
200 Personnel Services - Employee Benefits	63,355			63,355	
300 Purchased Professional and Technical Services					
400 Purchased Property Services					
500 Other Purchased Services	5,485,607			5,485,607	
600 Supplies					
740 Depreciation	66,905		4,728	71,633	
810 Dues and Fees					
890 Miscellaneous Expenditures			22,632	22,632	875,612
Total Operating Expenses	\$5,763,684		\$27,360	\$5,791,054	\$875,612
Operating Income (Loss)	(\$5,521,257)		\$62,465	(\$5,458,792)	(\$875,612)
Non Operating Revenues (Expenses)					
6500 Earnings on Investments	11,927		3,362	15,289	2,480
6920 Contributions and Donations from Private Sources	166,766			166,766	
6930 Gains or Losses on Sale of Fixed Assets					
6991 Refunds of a Prior Year Expenditure					
7000 Revenue from State Sources	258,913			258,913	
8000 Revenue from Federal Sources	5,956,795			5,956,795	
820 Claims and Judgments Against the LEA					
830 Interest					
TOTAL Non Operating Revenues (Expenses)	\$6,394,401		\$3,362	\$6,397,763	\$2,480
Income (Loss) Before Contributions And Transfers	\$873,144		\$65,827	\$938,971	(\$873,132)

Amounts Expressed in Whole Dollars	Food Service	Child Care Operations	Other Enterprise	TOTAL	Internal Service
	(51)	(52)	(58)		(60)
Contributions, Transfers, and Special and Extraordinary Items					
5200 Interfund Transfers - Out					
5300 Transfers Out to Component Units/Primary Governments					
5520 Special Items - Losses					
5530 Extraordinary Items - Losses					
9300 Interfund Transfers - IN					1,120,018
9500 Capital Contributions					
9700 Transfers IN From Component Units/Primary Governments					
9920 Special Items - Gains					
9930 Extraordinary Items - Gains					
Change in Net Position	\$873,144		\$65,827	\$938,971	\$246,886
0002 Net Position - Beginning of Fiscal Year	2,849,550		305,315	3,154,865	282,911
0003 Accounting Changes / Residual Equity Transfers					
Net Position - End Of Year	\$3,722,694		\$371,142	\$4,093,836	\$529,797

Amounts Expressed in Whole Dollars	Food Service (51)	Child Care Operations (52)	Other Enterprise (58)	TOTAL	Internal Service(s) (60)
Cash Flows From Operating Activities					
0011 Cash Receipts From Users	242,437		89,825	332,262	
0012 Cash Receipts From Assessments Made to Other Funds					
0013 Cash Receipts From Earnings on Investments					
0014 Cash Receipts From Other Operating Revenue					
0015 Cash Payments To Employees For Services					
0016 Cash Payments For Insurance Claims					
0017 Cash Payments To Suppliers For Goods and Services	5,480,712		22,632	5,503,344	875,612
0018 Cash Payments For Other Operating Expenses					
Net Cash Provided By (Used For) Operating Activities	(\$5,238,275)		\$67,193	(\$5,171,082)	(\$875,612)
Cash Flows From Non-Capital Financing Activities					
0021 Receipts From Local Sources - 6000	166,766			166,766	
0022 Receipts From State Sources - 7000	258,913			258,913	
0023 Receipts From Federal Sources -8000	3,457,241			3,457,241	
0024 Notes and Loans Received (Repaid)					
0025 Interest Paid on Notes/Loans - 5100-830					
0026 Operating Transfers In (Out)/Residual Equity Trans					
0027 Operating Transfers In (Out) Primary Government / Comp Unit					1,120,018
0028 Receipts From Refund of Prior Year Expenditures - 6991					
0029 Special and Extraordinary Gains (losses)					
Net Cash Prov By (Used for) Non-Capital Financing Activities	\$3,882,920			\$3,882,920	\$1,120,018
Cash Flows From Capital and Related Financing Activities					
0031 Payments For Fac Acq, Const, and Imp - 4000	(464,021)			(464,021)	
0032 Gain / (Loss) on Sale of Fixed Assets - 6930			(14,995)	(14,995)	
0033 Proceeds From Extended Term Financing - 9200					(479,016)
0034 Principal Paid on Financing Agreements					
0035 Interest Paid on Financing Agreements - 5100-830					
0036 (Inc) Dec in Contributed Capital					
Net Cash Prov By (Used for) Capital and Related Financing Activities	(\$464,021)		(\$14,995)	(\$479,016)	
Cash Flows From Investing Activities					
0041 Earnings on Investments - 6500	11,927			11,927	
0042 Purchase of Inv Securities / Deposits to Inv Pools			3,362	3,362	15,289
0043 Receipts From Investment Pool Withdrawals					
0044 Proceeds from Sale and Maturity of Inv Securities					
0045 Loans Received (Paid)					
Net Cash Prov By (Used for) Investing Activities	\$11,927		\$3,362	\$15,289	\$2,480

	Food Service (51)	Child Care Operations (52)	Other Enterprise (58)	TOTAL	Internal Service (60)
Net Increase (Decrease) In Cash Flows	(1,807,449)		55,560	(1,751,889)	246,886
0004 Cash and Cash Equivalents Beginning of Year	3,004,304		357,516	3,361,820	282,911
Cash and Cash Equivalents at Year End	\$1,196,855		\$413,076	\$1,609,931	\$529,797

Reconciliation of Operating Income (Loss) To Net Cash Provided by (Used For) Operating Activities

0005 Operating Income (Loss) per REP	(5,521,257)	62,465	(5,458,792)	(875,612)
Adjustments				
0051 Depreciation and Net Amortization		66,905	66,905	
0052 Provision for Uncollectible Accounts			4,728	
0053 Other Adjustments				
Effect of Changes in Assets, Liabilities, Deferred Outflows and Deferred Inflows				
0054 (Inc) Dec In Accounts Receivable (0120-0150)			211,182	
0055 Advances to Other Funds (0160)			4,895	
0056 (Inc) Dec in Inventories (0170)				
0057 (Inc) Dec in Prepaid Expenses (0180)				
0058 (Inc) Dec in Other Current or Noncurrent Assets				
0064 Deferred Outflows (0910)				
0059 Inc (Dec) in Accounts Payable (0400-0450)				
0060 Inc (Dec) in Accrued Salaries/Benefits (0461)				
0065 Inc (Dec) in Net Pension Liabilities (0570)				
0066 Inc (Dec) in Other Postemp Benefit Oblig (0560)				
0061 Inc (Dec) in Payroll Deductions/Withholding (0462)				
0062 Inc (Dec) in Unearned Revenue (0480)				
0063 Inc (Dec) in Other Current or Noncurrent Liabilities				
0067 Deferred Inflows (0950)				
Total Adjustments			\$282,982	\$4,728
Cash Provided By (Used for) Total			(\$5,238,275)	\$67,193
			\$287,710	(\$5,171,082)
				(\$875,612)

COMBINED STATEMENT OF CASH FLOWS
SCHEDULE OF NONCASH INVESTING, CAPITAL, AND FINANCING ACTIVITIES

Explanation of Transaction and Balance Sheet Effect

Total

Amount

	Amounts Expressed in Whole Dollars	Private Purpose Trust (71)	Investment Trust (72)	Pension Trust (73)	Activity (81)
Assets And Deferred Outflows Of Resources					
Assets					
0100 Cash and Cash Equivalents					401,963
0110 Investments					25,164
0130 Due From Other Funds					
0147 Due from Component Unit					
0150 Other Receivables					
0170 Inventories					
0180 Prepaid Expenses (Expenditures)					
0190 Other Current Assets					
0220 Buildings and Building Improvements (Net)					
0230 Machinery, Equipment and Furniture (Net)					
Total Assets		\$3,755			\$427,127
0910 Deferred Outflows of Resources					
Total Assets And Deferred Outflows Of Resources		\$3,755			\$427,127

	Amounts Expressed in Whole Dollars	Other Agency (89)	Discrete Component Units (98)	Discrete Component Units (99)	Total Fiduciary Funds
Assets And Deferred Outflows Of Resources					
Assets					
0100	Cash and Cash Equivalents				405,718
0110	Investments				25,164
0130	Due From Other Funds				
0147	Due from Component Unit				
0150	Other Receivables				
0170	Inventories				
0180	Prepaid Expenses (Expenditures)				
0190	Other Current Assets				
0220	Buildings and Building Improvements (Net)				
0230	Machinery, Equipment and Furniture (Net)				
Total Assets					\$430,882
0910	Deferred Outflows of Resources				
Total Assets And Deferred Outflows Of Resources					\$430,882

Amounts Expressed in Whole Dollars

Page - 3 of 4

Liabilities, Deferred Inflows Of Resources And Net Position

Private Purpose Trust (71)

Investment Trust (72)

Pension Trust (73)

Activity (81)

0400 Due to Other Funds

0411 Due to Other Governments

0412 Due to Primary Government

0413 Due to Component Unit

0420 Accounts Payable

0430 Contracts Payable

0450 Short-Term Payables

0461 Accrued Salaries and Benefits

0462 Payroll Deductions and Withholding

0480 Unearned Revenues

0490 Other Current Liabilities

Total Liabilities

0950 Deferred Inflows of Resources

Net Position

0791 Net Investment in Capital Assets

0009 Restricted Net Position (0792 - 0798)

0799 Unrestricted Net Position

Total Net Position

Total Liabilities, Deferred Inflows Of Resources And Net Position

3,755
\$3,755
\$3,755

427,127
\$427,127
\$427,127

Amounts Expressed in Whole Dollars

Liabilities, Deferred Inflows Of Resources And Net Position

Liabilities

0400 Due to Other Funds	
0411 Due to Other Governments	
0412 Due to Primary Government	
0413 Due to Component Unit	
0420 Accounts Payable	
0430 Contracts Payable	
0450 Short-Term Payables	
0461 Accrued Salaries and Benefits	
0462 Payroll Deductions and Withholding	
0480 Unearned Revenues	
0490 Other Current Liabilities	

Total Liabilities

0950 Deferred Inflows of Resources

Net Position

0791 Net Investment In Capital Assets

0009 Restricted Net Position (0792 - 0798)

0799 Unrestricted Net Position

Total Net Position

Total Liabilities, Deferred Inflows Of Resources And Net Position

Other Agency	Discrete Component Units	Discrete Component Units	Total Fiduciary Funds
(89)	(98)	(99)	

	427,127			
	\$427,127			
			3,755	
			\$3,755	
			\$430,882	

Amounts Expressed in Whole Dollars	Private Purpose Trust	Investment Trust	Pension Trust	Discrete Component	Discrete Component	Total Fiduciary
	(71)	(72)	(73)	Units (98)	Units (99)	Funds
Additions						
0091 Gifts and Contributions						
0092 Other Additions						
Deductions						
0093 Scholarships Awarded						
0094 Other Deductions						
Change In Net Position	\$32					\$32
0006 Net Position - Beginning of Fiscal Year		3,723				3,723
0007 Net Position Held in Trust for Pension Benefits						
Net Position - End of Fiscal Year	\$3,755					\$3,755

	Revenue Reported In Current Year	Current Year Tax Accrual	Prior Year Tax Accrual	Taxes Collected In Current Year
Revenue from Local Sources				
6111 Current Real Estate Taxes	37,720,648.41			37,720,648.41
6113 Public Utility/Realty Taxes	67,104.38			67,104.38
6114 Payments in Lieu of Current Taxes - State / Local	105,690.54			105,690.54
6142 Current Act 511 Occupation Taxes - Flat Rate	187,217.15			187,217.15
6151 Current Act 511 Earned Income Taxes	10,814,283.50			10,814,283.50
6153 Current Act 511 Real Estate Transfer Taxes	890,623.40			890,623.40
6155 Current Act 511 Business Privilege Taxes	5,264,257.62			5,264,257.62
6157 Current Act 511 Mercantile Taxes	1,234,825.87			1,234,825.87
6411 Delinquent Real Estate Taxes	4,307,178.19			4,307,178.19
6500 Earnings on Investments	312,888.47			
6832 Federal IDEA Revenue Received as Pass Through	2,011,258.95			
6910 Rentals	60,710.00			
6942 Summer School Tuition	73,344.00			
6999 Other Revenues Not Specified Above	256,575.00			
TOTAL Revenue from Local Sources	\$63,306,605.48			\$60,591,829.06

<u>Revenue from State Sources</u>	<u>Revenue Reported In Current Year</u>
7110 Basic Education Funding	41,337,046.46
7160 Tuition for Orphans Subsidy	134,233.68
7271 Special Education funds for School-Aged Pupils	5,858,141.75
7311 Pupil Transportation Subsidy	1,176,913.53
7312 Nonpublic and Charter School Pupil Transportation Subsidy	167,475.00
7320 Rental and Sinking Fund Payments / Building Reimbursement Subsidy	4,900,303.12
7340 State Property Tax Reduction Allocation	4,368,794.37
7505 Ready to Learn Block Grant	2,155,739.00
7599 Other State Revenue Not Listed Elsewhere in the 7000 Series	412,797.73
7810 State Share of Social Security and Medicare Taxes	3,201,960.39
7820 State Share of Retirement Contributions	14,035,208.26
TOTAL Revenue from State Sources	\$77,748,613.29

Revenue from Federal Sources

	Revenue Reported In Current Year
8390 Other Restricted Federal Grants-in-Aid Directly from the Federal Government	349,042.81
8514 NCLB, Title I - Improving the Academic Achievement of the Disadvantaged	3,888,606.83
8515 NCLB, Title II - Preparing, Training and Recruiting High Quality Teachers and Principals	553,066.35
8516 NCLB, Title III - Language Instruction for Limited English Proficient and Immigrant Students	305,812.94
8810 School-Based Access Medicaid Reimbursement Program (SBAP) Reimbursements (Access)	710,795.42
TOTAL Revenue from Federal Sources	\$5,807,324.35

Other Financing Sources

9910 Other Financing Sources Not Listed in the 9000 Series

	Revenue Reported In Current Year	
TOTAL Other Financing Sources	601,742.00	
TOTAL FROM ALL SOURCES	\$601,742.00	\$60,591,829.06

Revenue from Local Sources	63,306,605.48
Revenue from State Sources	77,748,613.29
Revenue from Federal Sources	5,807,324.35
Other Financing Sources	601,742.00
TOTAL FROM ALL SOURCES	\$147,464,285.12

General Fund (10)

1000 Instruction

100 Personnel Services - Salaries

100 Personnel Services - Salaries

Total Personnel Services - Salaries

200 Personnel Services - Employee Benefits

210 Group Insurance - Contracted Provider

220 Social Security Contributions

230 PSERS Retirement Contributions

250 Unemployment Compensation

260 Workers' Compensation

Total Personnel Services - Employee Benefits

300 Purchased Professional and Technical Services

310 Official / Administrative Services

322 Professional Educational Services - Ius

323 Professional Educational Services - Other Educational Agencies

329 Professional Educational Services - Other

Total Purchased Professional and Technical Services

400 Purchased Property Services

430 Repairs and Maintenance Services

440 Rentals

Total Purchased Property Services

500 Other Purchased Services

510 Student Transportation Services

550 Printing and Binding

561 Tuition To Other School Districts Within the State

562 Tuition To Pennsylvania Charter Schools

563 Tuition To Nonpublic Schools

564 Tuition To Career and Technology Centers

567 Tuition To Approved Private Schools (APS) and PA Chartered Schools for the Deaf and Blind

568 Tuition To Private Residential Rehabilitative Institutions (PRRI) [In-State] and Detention Centers

580 Travel

594 IU Payment By Withholding for Institutionalized Children's Programs - Special Classes

Total Other Purchased Services

600 Supplies

610 General Supplies

640 Books and Periodicals

Total Supplies

700 Property

752 Capital Equipment - Original and Additional

762 Capitalized Equipment - Replacement

Total Property

800 Other Objects

810 Dues and Fees

Total

54,395,089.65

\$54,395,089.65

14,874,427.32

3,946,641.51

15,710,187.28

44,016.63

195,881.29

\$34,771,154.03

36,949.27

1,225,994.01

83,284.88

1,118,607.77

\$2,464,835.93

9,561.99

214,825.04

\$224,387.03

11,373.49

2,306.70

141,947.69

5,362,932.15

1,153,657.28

1,819,696.19

197,607.00

67,242.52

8,023.17

32,075.15

\$8,796,961.34

475,374.67

208,380.20

\$683,754.87

203,622.47

10,408.96

\$214,031.43

10,429.92

General Fund (10)	
1000 Instruction	
800 <u>Other Objects</u>	
890 Miscellaneous Expenditures	
Total Other Objects	11,177.25
Total 1000 Instruction	\$21,607.17
	\$101,571,721.45

	Elementary	Secondary	Federal	Total
General Fund (10)				
1100 Regular Programs - Elementary / Secondary				
100 Personnel Services - Salaries	19,329,814.85	20,940,632.76	1,662,137.12	41,932,584.73
Total Personnel Services - Salaries	\$19,329,814.85	\$20,940,632.76	\$1,662,137.12	\$41,932,584.73
200 Personnel Services - Employee Benefits	5,380,640.43	5,829,027.14	369,478.19	11,579,145.76
220 Social Security Contributions	1,394,261.90	1,510,450.39	121,700.61	3,026,412.90
230 PSERS Retirement Contributions	5,455,708.65	5,910,357.22	503,934.94	11,870,000.81
250 Unemployment Compensation	15,764.45	17,078.15	1,198.77	34,041.37
260 Workers' Compensation	63,041.16	68,294.58	3,081.20	134,416.94
Total Personnel Services - Employee Benefits	\$12,309,416.59	\$13,335,207.48	\$999,393.71	\$26,644,017.78
300 Purchased Professional and Technical Services	14,772.66	16,003.71	6,172.90	36,949.27
310 Official / Administrative Services				
329 Professional Educational Services - Other		59,297.00		59,297.00
Total Purchased Professional and Technical Services	\$14,772.66	\$75,300.71	\$6,172.90	\$96,246.27
400 Purchased Property Services	4,589.76	4,972.23		9,561.99
430 Repairs and Maintenance Services				
440 Rentals	103,116.02	111,709.02		214,825.04
Total Purchased Property Services	\$107,705.78	\$116,681.25		\$224,387.03
500 Other Purchased Services	4,352.59	4,715.31	9,067.90	18,135.80
510 Student Transportation Services				
550 Printing and Binding	1,107.22	1,199.48		2,306.70
561 Tuition To Other School Districts Within the State	61,119.25	66,212.52	127,331.77	254,663.54
562 Tuition To Pennsylvania Charter Schools	1,732,848.00	1,877,251.99	3,610,099.99	7,220,199.98
568 Tuition To Private Residential Rehabilitative Institutions (PRRI) [In-State] and Detention Centers	32,276.41	34,966.11		67,242.52
580 Travel	1,831.63	1,984.27		3,815.90
Total Other Purchased Services	\$1,833,535.10	\$1,986,329.68		\$3,819,864.78
600 Supplies	81,518.40	88,311.60	222,478.39	392,308.39
610 General Supplies				
640 Books and Periodicals	53,291.55	57,732.51		111,024.06
Total Supplies	\$134,809.95	\$146,044.11	\$222,478.39	\$503,332.45
700 Property	1,824.00	1,976.00		3,800.00
752 Capital Equipment - Original and Additional				
762 Capitalized Equipment - Replacement	4,996.30	5,412.66		10,408.96
Total Property	\$6,820.30	\$7,388.66		\$14,208.96
800 Other Objects	5,006.36	5,423.56	10,429.92	20,859.84
810 Dues and Fees				
890 Miscellaneous Expenditures	3,322.53	3,599.41	6,921.94	13,843.88
Total Other Objects	\$8,328.89	\$9,022.97	\$17,351.86	\$34,703.72
Total 1100 Regular Programs - Elementary / Secondary	\$33,745,204.12	\$36,616,607.62	\$2,890,182.12	\$73,251,993.86

	Elementary	Secondary	Federal	Total
General Fund (10)				
1110 Regular Programs				
100 Personnel Services - Salaries				
100 Personnel Services - Salaries	19,329,814.85	20,940,632.76		40,270,447.61
Total Personnel Services - Salaries	\$19,329,814.85	\$20,940,632.76		\$40,270,447.61
200 Personnel Services - Employee Benefits				
210 Group Insurance - Contracted Provider	5,380,640.43	5,829,027.14		11,209,667.57
220 Social Security Contributions	1,394,261.90	1,510,450.39		2,904,712.29
230 PSEERS Retirement Contributions	5,455,708.65	5,910,357.22		11,366,065.87
250 Unemployment Compensation	15,764.45	17,078.15		32,842.60
260 Workers' Compensation	63,041.16	68,294.58		131,335.74
Total Personnel Services - Employee Benefits	\$12,309,416.59	\$13,335,207.48		\$25,644,624.07
300 Purchased Professional and Technical Services				
310 Official / Administrative Services	14,772.66	16,003.71		30,776.37
329 Professional Educational Services - Other		59,297.00		59,297.00
Total Purchased Professional and Technical Services	\$14,772.66	\$75,300.71		\$90,073.37
400 Purchased Property Services				
430 Repairs and Maintenance Services	4,589.76	4,972.23		9,561.99
440 Rentals	103,116.02	111,709.02		214,825.04
Total Purchased Property Services	\$107,705.78	\$116,681.25		\$224,387.03
500 Other Purchased Services				
510 Student Transportation Services	4,352.59	4,715.31		9,067.90
550 Printing and Binding	1,107.22	1,199.48		2,306.70
561 Tuition To Other School Districts Within the State	61,119.25	66,212.52		127,331.77
562 Tuition To Pennsylvania Charter Schools	1,732,848.00	1,877,251.99		3,610,099.99
568 Tuition To Private Residential Rehabilitative Institutions (PRRI) [In-State] and Detention Centers	32,276.41	34,986.11		67,262.52
580 Travel	1,831.63	1,984.27		3,815.90
Total Other Purchased Services	\$1,833,535.10	\$1,986,329.68		\$3,819,864.78
600 Supplies				
610 General Supplies	81,518.40	88,311.60		169,830.00
640 Books and Periodicals	53,291.55	57,732.51		111,024.06
Total Supplies	\$134,809.95	\$146,044.11		\$280,854.06
700 Property				
752 Capital Equipment - Original and Additional	1,824.00	1,976.00		3,800.00
762 Capitalized Equipment - Replacement	4,996.30	5,412.66		10,408.96
Total Property	\$6,820.30	\$7,388.66		\$14,208.96
800 Other Objects				
810 Dues and Fees	5,006.36	5,423.56		10,429.92
890 Miscellaneous Expenditures	3,322.53	3,599.41		6,921.94
Total Other Objects	\$8,328.89	\$9,022.97		\$17,351.86
Total 1110 Regular Programs	\$33,745,204.12	\$36,616,607.62		\$70,361,811.74

	Elementary	Secondary	Federal	Total
General Fund (10)				
1190 Federally-Funded Regular Programs				
100 Personnel Services - Salaries				
100 Personnel Services - Salaries			1,662,137.12	1,662,137.12
Total Personnel Services - Salaries			\$1,662,137.12	\$1,662,137.12
200 Personnel Services - Employee Benefits				
210 Group Insurance - Contracted Provider			369,478.19	369,478.19
220 Social Security Contributions			121,700.61	121,700.61
230 PSEERS Retirement Contributions			503,934.94	503,934.94
250 Unemployment Compensation			1,198.77	1,198.77
260 Workers' Compensation			3,081.20	3,081.20
Total Personnel Services - Employee Benefits			\$999,393.71	\$999,393.71
300 Purchased Professional and Technical Services				
310 Official / Administrative Services			6,172.90	6,172.90
Total Purchased Professional and Technical Services			\$6,172.90	\$6,172.90
600 Supplies				
610 General Supplies			222,478.39	222,478.39
Total Supplies			\$222,478.39	\$222,478.39
Total 1190 Federally-Funded Regular Programs			\$2,890,182.12	\$2,890,182.12

	Elementary	Secondary	Federal	Total
General Fund (10)				
1200 Special Programs - Elementary / Secondary				
100 Personnel Services - Salaries	3,773,038.09	4,241,125.75	2,722,154.00	10,736,317.84
Total Personnel Services - Salaries	\$3,773,038.09	\$4,241,125.75	\$2,722,154.00	\$10,736,317.84
200 Personnel Services - Employee Benefits				
210 Group Insurance - Contracted Provider	1,391,726.74	1,507,703.95		2,899,430.69
220 Social Security Contributions	378,588.16	413,215.92		791,804.08
230 PSERS Retirement Contributions	1,580,729.78	1,724,542.75		3,305,272.53
250 Unemployment Compensation	4,182.74	4,531.29		8,714.03
260 Workers' Compensation	27,110.08	29,369.28		56,479.36
Total Personnel Services - Employee Benefits	\$3,382,337.50	\$3,679,363.19		\$7,061,700.69
300 Purchased Professional and Technical Services				
322 Professional Educational Services - Lus	588,477.12	637,516.89		1,225,994.01
323 Professional Educational Services - Other Educational Agencies	39,976.74	43,308.14		83,284.88
329 Professional Educational Services - Other	503,130.53	545,058.10		1,048,188.63
Total Purchased Professional and Technical Services	\$1,131,584.39	\$1,225,883.13		\$2,357,467.52
500 Other Purchased Services				
510 Student Transportation Services	1,106.69	1,198.90		2,305.59
562 Tuition To Pennsylvania Charter Schools	841,359.44	911,472.72		1,752,832.16
563 Tuition To Nonpublic Schools	553,755.49	599,901.79		1,153,657.28
567 Tuition To Approved Private Schools (APS) and PA Chartered Schools for the Deaf and Blind	94,851.36	102,755.64		197,607.00
580 Travel	2,019.49	2,187.78		4,207.27
594 IU Payment By Withholding for Institutionalized Children's Programs - Special Classes	15,396.07	16,679.08		32,075.15
Total Other Purchased Services	\$1,508,488.54	\$1,634,195.91		\$3,142,684.45
600 Supplies				
610 General Supplies	28,403.91	30,188.93		58,592.84
640 Books and Periodicals	46,259.81	50,114.80		96,374.61
Total Supplies	\$74,663.72	\$80,303.73		\$154,967.45
700 Property				
752 Capital Equipment - Original and Additional	94,761.83	102,658.64		197,420.47
Total Property	\$94,761.83	\$102,658.64		\$197,420.47
800 Other Objects				
890 Miscellaneous Expenditures	2,042.55	2,212.76		4,255.31
Total Other Objects	\$2,042.55	\$2,212.76		\$4,255.31
Total 1200 Special Programs - Elementary / Secondary	\$9,966,916.62	\$10,965,743.11	\$2,722,154.00	\$23,654,813.73

	Elementary	Secondary	Federal	Total
General Fund (10)				
1210 Life Skills Support				
100 Personnel Services - Salaries	249,224.56	277,411.10	178,028.00	704,663.66
Total Personnel Services - Salaries	\$249,224.56	\$277,411.10	\$178,028.00	\$704,663.66
200 Personnel Services - Employee Benefits				
210 Group Insurance - Contracted Provider	92,482.56	100,189.44		192,672.00
220 Social Security Contributions	24,829.59	26,898.72		51,728.31
230 PSERS Retirement Contributions	103,693.57	112,334.70		216,028.27
250 Unemployment Compensation	282.31	305.83		588.14
260 Workers' Compensation	2,132.86	2,310.60		4,443.46
Total Personnel Services - Employee Benefits	\$223,420.89	\$242,039.29		\$465,460.18
300 Purchased Professional and Technical Services				
322 Professional Educational Services - Lus	185,639.05	201,108.98		386,748.03
329 Professional Educational Services - Other	69,961.31	75,791.42		145,752.73
Total Purchased Professional and Technical Services	\$255,600.36	\$276,900.40		\$532,500.76
500 Other Purchased Services				
510 Student Transportation Services	120.00	130.00		250.00
563 Tuition To Nonpublic Schools	34,854.96	37,759.54		72,614.50
Total Other Purchased Services	\$34,974.96	\$37,889.54		\$72,864.50
600 Supplies				
610 General Supplies	4,293.97	4,651.80		8,945.77
640 Books and Periodicals	3,558.75	3,855.32		7,414.07
Total Supplies	\$7,852.72	\$8,507.12		\$16,359.84
700 Property				
752 Capital Equipment - Original and Additional	4,540.66	4,919.05		9,459.71
Total Property	\$4,540.66	\$4,919.05		\$9,459.71
Total 1210 Life Skills Support	\$775,614.15	\$847,666.50	\$178,028.00	\$1,801,308.65

General Fund (10)		Elementary	Secondary	Federal	Total
1220 Sensory Support					
100 Personnel Services - Salaries					
100 Personnel Services - Salaries		19,319.40	21,519.14	14,155.00	54,993.54
Total Personnel Services - Salaries		\$19,319.40	\$21,519.14	\$14,155.00	\$54,993.54
200 Personnel Services - Employee Benefits					
210 Group Insurance - Contracted Provider		6,376.05	6,907.38		13,283.43
220 Social Security Contributions		1,924.54	2,084.92		4,009.46
230 PSERS Retirement Contributions		8,178.96	8,860.55		17,039.51
250 Unemployment Compensation		20.01	21.67		41.68
260 Workers' Compensation		109.56	118.69		228.25
Total Personnel Services - Employee Benefits		\$16,609.12	\$17,993.21		\$34,602.33
300 Purchased Professional and Technical Services					
323 Professional Educational Services - Other Educational Agencies		39,976.74	43,308.14		83,284.88
Total Purchased Professional and Technical Services		\$39,976.74	\$43,308.14		\$83,284.88
500 Other Purchased Services					
562 Tuition To Pennsylvania Charter Schools		720.00	780.00		1,500.00
563 Tuition To Nonpublic Schools		43,172.64	46,770.36		89,943.00
Total Other Purchased Services		\$43,892.64	\$47,550.36		\$91,443.00
600 Supplies					
610 General Supplies		3,586.89	3,885.80		7,472.69
640 Books and Periodicals		2,086.65	2,280.54		4,347.19
Total Supplies		\$5,673.54	\$6,146.34		\$11,819.88
700 Property					
752 Capital Equipment - Original and Additional		2,398.08	2,597.92		4,996.00
Total Property		\$2,398.08	\$2,597.92		\$4,996.00
Total 1220 Sensory Support		\$127,869.52	\$139,115.11	\$14,155.00	\$281,139.63

	Elementary	Secondary	Federal	Total
General Fund (10)				
1230 Emotional Support				
100 Personnel Services - Salaries				
100 Personnel Services - Salaries	1,050,882.67	1,169,738.30	750,770.00	2,971,390.97
Total Personnel Services - Salaries	\$1,050,882.67	\$1,169,738.30	\$750,770.00	\$2,971,390.97
200 Personnel Services - Employee Benefits				
210 Group Insurance - Contracted Provider	346,362.10	375,225.61		721,587.71
220 Social Security/Contributions	104,776.55	113,507.94		218,284.49
230 PSERS Retirement Contributions	439,582.79	476,214.68		915,797.47
250 Unemployment Compensation	1,074.18	1,163.70		2,237.88
260 Workers' Compensation	6,245.08	6,765.52		13,010.60
Total Personnel Services - Employee Benefits	\$898,040.70	\$972,877.45		\$1,870,918.15
300 Purchased Professional and Technical Services				
322 Professional Educational Services - Lus	200,241.56	216,928.35		417,169.91
329 Professional Educational Services - Other	189,691.87	205,499.55		395,191.42
Total Purchased Professional and Technical Services	\$389,933.43	\$422,427.90		\$812,361.33
500 Other Purchased Services				
510 Student Transportation Services	986.69	1,068.90		2,055.59
562 Tuition To Pennsylvania Charter Schools	6,308.64	6,834.36		13,143.00
563 Tuition To Nonpublic Schools	338,142.48	366,321.02		704,463.50
Total Other Purchased Services	\$345,437.81	\$374,224.28		\$719,662.09
600 Supplies				
610 General Supplies	1,166.28	1,263.47		2,429.75
640 Books and Periodicals	24,039.08	26,042.33		50,081.41
Total Supplies	\$25,205.36	\$27,305.80		\$52,511.16
700 Property				
752 Capital Equipment - Original and Additional	37,200.24	40,300.25		77,500.49
Total Property	\$37,200.24	\$40,300.25		\$77,500.49
Total 1230 Emotional Support	\$2,746,700.21	\$3,006,873.98	\$750,770.00	\$6,504,344.19

	Elementary	Secondary	Federal	Total
General Fund (10)				
1240 Academic Support				
100 Personnel Services - Salaries				
100 Personnel Services - Salaries	2,453,611.46	2,772,457.21	1,779,201.00	7,005,269.67
Total Personnel Services - Salaries	\$2,453,611.46	\$2,772,457.21	\$1,779,201.00	\$7,005,269.67
200 Personnel Services - Employee Benefits				
210 Group Insurance - Contracted Provider	946,506.03	1,025,381.52		1,971,887.55
220 Social Security/Contributions	247,057.48	270,724.34		517,781.82
230 PSERS Retirement Contributions	1,029,274.46	1,127,132.82		2,156,407.28
250 Unemployment Compensation	2,806.24	3,040.09		5,846.33
260 Workers' Compensation	18,622.58	20,174.47		38,797.05
Total Personnel Services - Employee Benefits	\$2,244,266.79	\$2,446,453.24		\$4,690,720.03
300 Purchased Professional and Technical Services				
322 Professional Educational Services - Ius	48.00	52.00		100.00
329 Professional Educational Services - Other	234,107.35	253,616.29		487,723.64
Total Purchased Professional and Technical Services	\$234,155.35	\$253,668.29		\$487,823.64
500 Other Purchased Services				
562 Tuition To Pennsylvania Charter Schools	834,330.80	903,858.36		1,738,189.16
563 Tuition To Nonpublic Schools	74,126.50	80,303.71		154,430.21
580 Travel	2,019.49	2,187.78		4,207.27
Total Other Purchased Services	\$910,476.79	\$986,349.85		\$1,896,826.64
600 Supplies				
610 General Supplies	13,855.43	15,010.04		28,865.47
640 Books and Periodicals	16,575.33	17,956.61		34,531.94
Total Supplies	\$30,430.76	\$32,966.65		\$63,397.41
700 Property				
752 Capital Equipment - Original and Additional	36,149.19	39,161.63		75,310.82
Total Property	\$36,149.19	\$39,161.63		\$75,310.82
800 Other Objects				
890 Miscellaneous Expenditures	2,042.55	2,212.76		4,255.31
Total Other Objects	\$2,042.55	\$2,212.76		\$4,255.31
Total 1240 Academic Support	\$5,911,132.89	\$6,533,269.63	\$1,779,201.00	\$14,223,603.52

	Elementary	Secondary	Federal	Total
1241 Learning Support - Public				
100 Personnel Services - Salaries				
100 Personnel Services - Salaries	2,362,809.01	2,671,388.38	1,714,413.00	6,748,610.39
Total Personnel Services - Salaries	\$2,362,809.01	\$2,671,388.38	\$1,714,413.00	\$6,748,610.39
200 Personnel Services - Employee Benefits				
210 Group Insurance - Contracted Provider	925,037.13	1,002,123.55		1,927,160.68
220 Social Security Contributions	237,935.54	260,842.23		498,777.77
230 PSERS Retirement Contributions	991,129.34	1,085,808.94		2,076,938.28
250 Unemployment Compensation	2,740.53	2,968.90		5,709.43
260 Workers' Compensation	18,536.59	20,081.31		38,617.90
Total Personnel Services - Employee Benefits	\$2,175,379.13	\$2,371,824.93		\$4,547,204.06
300 Purchased Professional and Technical Services				
322 Professional Educational Services - Lus	48.00	52.00		100.00
329 Professional Educational Services - Other	231,137.35	250,398.79		481,536.14
Total Purchased Professional and Technical Services	\$231,185.35	\$250,450.79		\$481,636.14
500 Other Purchased Services.				
562 Tuition To Pennsylvania Charter Schools	834,330.80	903,858.36		1,738,189.16
563 Tuition To Nonpublic Schools	74,126.50	80,303.71		154,430.21
580 Travel	2,019.49	2,187.78		4,207.27
Total Other Purchased Services	\$910,476.79	\$986,349.85		\$1,896,826.64
600 Supplies				
610 General Supplies	13,690.79	14,831.68		28,522.47
640 Books and Periodicals	16,575.33	17,956.61		34,531.94
Total Supplies	\$30,266.12	\$32,788.29		\$63,054.41
700 Property				
752 Capital Equipment - Original and Additional	32,252.95	34,940.70		67,193.65
Total Property	\$32,252.95	\$34,940.70		\$67,193.65
800 Other Objects				
890 Miscellaneous Expenditures	2,042.55	2,212.76		4,255.31
Total Other Objects	\$2,042.55	\$2,212.76		\$4,255.31
Total 1241 Learning Support - Public	\$5,744,411.90	\$6,349,955.70	\$1,714,413.00	\$13,808,780.60

General Fund (10)		Elementary	Secondary	Federal	Total
1243 Gifted Support					
100 Personnel Services - Salaries					
100 Personnel Services - Salaries		90,802.45	101,068.83	64,788.00	256,659.28
Total Personnel Services - Salaries		\$90,802.45	\$101,068.83	\$64,788.00	\$256,659.28
200 Personnel Services - Employee Benefits					
210 Group Insurance - Contracted Provider		21,468.90	23,257.97		44,726.87
220 Social Security Contributions		9,121.94	9,882.11		19,004.05
230 PSERS Retirement Contributions		38,145.12	41,323.88		79,469.00
250 Unemployment Compensation		65.71	71.19		136.90
260 Workers' Compensation		85.99	93.16		179.15
Total Personnel Services - Employee Benefits		\$68,887.66	\$74,628.31		\$143,515.97
300 Purchased Professional and Technical Services					
329 Professional Educational Services - Other		2,970.00	3,217.50		6,187.50
Total Purchased Professional and Technical Services		\$2,970.00	\$3,217.50		\$6,187.50
600 Supplies					
610 General Supplies		164.64	178.36		343.00
Total Supplies		\$164.64	\$178.36		\$343.00
700 Property					
752 Capital Equipment - Original and Additional		3,896.24	4,220.93		8,117.17
Total Property		\$3,896.24	\$4,220.93		\$8,117.17
Total 1243 Gifted Support		\$166,720.99	\$183,313.93	\$64,788.00	\$414,822.92

	Elementary	Secondary	Federal	Total
General Fund (10)				
1270 Multi-Handicapped Support				
300 Purchased Professional and Technical Services				
322 Professional Educational Services – Ius	202,548.51	219,427.56		421,976.07
329 Professional Educational Services – Other	9,370.00	10,150.84		19,520.84
Total Purchased Professional and Technical Services	\$211,918.51	\$229,578.40		\$441,496.91
500 Other Purchased Services				
563 Tuition To Nonpublic Schools	63,458.91	68,747.16		132,206.07
Total Other Purchased Services	\$63,458.91	\$68,747.16		\$132,206.07
600 Supplies				
610 General Supplies	4,964.15	5,377.82		10,341.97
Total Supplies	\$4,964.15	\$5,377.82		\$10,341.97
700 Property				
752 Capital Equipment – Original and Additional	14,473.66	15,679.79		30,153.45
Total Property	\$14,473.66	\$15,679.79		\$30,153.45
Total 1270 Multi-Handicapped Support	\$294,815.23	\$319,383.17		\$614,198.40

	Elementary	Secondary	Federal	Total
General Fund (10)				
1280 Early Intervention Support				
600 Supplies				
610 General Supplies	537.19			537.19
Total Supplies	\$537.19			\$537.19
Total 1280 Early Intervention Support	\$537.19			\$537.19

	Elementary	Secondary	Federal	Total
General Fund (10)				
1290 Special Programs - Other Support				
500 Other Purchased Services				
567 Tuition To Approved Private Schools (APS) and PA Chartered Schools for the Deaf and Blind	94,851.36	102,755.64		197,607.00
594 IU Payment By Withholding for Institutionalized Children's Programs - Special Classes	15,396.07	16,679.08		32,075.15
Total Other Purchased Services	\$110,247.43	\$119,434.72		\$229,682.15
Total 1290 Special Programs - Other Support	\$110,247.43	\$119,434.72		\$229,682.15

	Elementary	Secondary	Federal	Total
General Fund (10)				
1300 Vocational Education				
500 Other Purchased Services				
564 Tuition To Career and Technology Centers				
Total Other Purchased Services				
600 Supplies	1,819,696.19			1,819,696.19
610 General Supplies		6,308.44		6,308.44
640 Books and Periodicals		981.53		981.53
Total Supplies	\$1,819,696.19	\$7,289.97		\$1,819,696.19
700 Property				
752 Capital Equipment - Original and Additional		2,402.00		2,402.00
Total Property		\$2,402.00		\$2,402.00
Total 1300 Vocational Education		\$1,829,388.16		\$1,829,388.16

	Elementary	Secondary	Federal	Total
General Fund (10)				
1400 Other Instructional Programs - Elementary / Secondary				
100 Personnel Services - Salaries				
100 Personnel Services - Salaries	2,900.04	295,517.14		298,417.18
Total Personnel Services - Salaries	\$2,900.04	\$295,517.14		\$298,417.18
200 Personnel Services - Employee Benefits				
210 Group Insurance - Contracted Provider		75,685.53		75,685.53
220 Social Security Contributions	221.07	22,404.91		22,625.98
230 PSERS Retirement Contributions		94,124.54		95,024.70
250 Unemployment Compensation	900.16	240.67		240.67
260 Workers' Compensation		953.10		953.10
Total Personnel Services - Employee Benefits		\$193,408.75		\$194,529.98
300 Purchased Professional and Technical Services				
329 Professional Educational Services - Other		11,122.14		11,122.14
Total Purchased Professional and Technical Services		\$11,122.14		\$11,122.14
500 Other Purchased Services				
561 Tuition To Other School Districts Within the State		14,615.92		14,615.92
Total Other Purchased Services		\$14,615.92		\$14,615.92
Total 1400 Other Instructional Programs - Elementary / Secondary	\$18,637.19	\$500,048.03		\$518,685.22

	Elementary	Secondary	Federal	Total
General Fund (10)				
1420 Summer School				
100 Personnel Services - Salaries				
100 Personnel Services - Salaries	2,900.04			2,900.04
Total Personnel Services - Salaries	\$2,900.04			\$2,900.04
200 Personnel Services - Employee Benefits				
220 Social Security Contributions		221.07		221.07
230 PSERS Retirement Contributions		900.16		900.16
Total Personnel Services - Employee Benefits		\$1,121.23		\$1,121.23
Total 1420 Summer School	\$4,021.27			\$4,021.27

	Elementary	Secondary	Federal	Total
General Fund (10)				
1430 Homebound Instruction				
100 Personnel Services - Salaries				
100 Personnel Services - Salaries		41,080.38		41,080.38
Total Personnel Services - Salaries		\$41,080.38		\$41,080.38
200 Personnel Services - Employee Benefits				
220 Social Security Contributions		3,131.20		3,131.20
230 PSERS Retirement Contributions		12,751.50		12,751.50
Total Personnel Services - Employee Benefits		\$15,882.70		\$15,882.70
Total 1430 Homebound Instruction		\$56,963.08		\$56,963.08

	Elementary	Secondary	Federal	Total
General Fund (10)				
1440 Alternative Regular Education Programs				
500 Other Purchased Services				
561 Tuition To Other School Districts Within the State	14,615.92			14,615.92
Total Other Purchased Services	\$14,615.92			\$14,615.92
Total 1440 Alternative Regular Education Programs	\$14,615.92			\$14,615.92

General Fund (10)		Elementary	Secondary	Federal	Total
1441 Adjudicated / Court-Placed Programs					
500 Other Purchased Services					
561 Tuition To Other School Districts Within the State	14,615.92				14,615.92
Total Other Purchased Services	\$14,615.92				\$14,615.92
Total 1441 Adjudicated / Court-Placed Programs	\$14,615.92				\$14,615.92

	Elementary	Secondary	Federal	Total
General Fund (10)				
1490 Additional Other Instructional Programs				
100 Personnel Services - Salaries				
100 Personnel Services - Salaries		254,436.76		254,436.76
Total Personnel Services - Salaries		\$254,436.76		\$254,436.76
200 Personnel Services - Employee Benefits				
210 Group Insurance - Contracted Provider		75,685.53		75,685.53
220 Social Security Contributions		19,273.71		19,273.71
230 PSERS Retirement Contributions		81,373.04		81,373.04
250 Unemployment Compensation		240.67		240.67
260 Workers' Compensation		953.10		953.10
Total Personnel Services - Employee Benefits		\$177,526.05		\$177,526.05
300 Purchased Professional and Technical Services				
329 Professional Educational Services - Other		11,122.14		11,122.14
Total Purchased Professional and Technical Services		\$11,122.14		\$11,122.14
Total 1490 Additional Other Instructional Programs		\$443,084.95		\$443,084.95

	Elementary	Secondary	Federal	Total
General Fund (10)				
1500 Nonpublic School Programs				
600 Supplies				
610 General Supplies			980.00	980.00
Total Supplies			\$980.00	\$980.00
Total 1500 Nonpublic School Programs			\$980.00	\$980.00

General Fund (10)		Elementary	Secondary	Federal	Total
1600 Adult Education Programs					
100	Personnel Services -- Salaries				
100	Personnel Services -- Salaries				3,922.24
Total Personnel Services -- Salaries					\$3,922.24
200 Personnel Services -- Employee Benefits					
220	Social Security Contributions				298.55
230	PSEERS Retirement Contributions				1,217.60
Total Personnel Services -- Employee Benefits					\$1,516.15
Total 1600 Adult Education Programs					\$5,438.39

	Elementary	Secondary	Federal	Total
General Fund (10)				
1800 Pre-Kindergarten				
100 Personnel Services - Salaries				
100 Personnel Services - Salaries			1,423,847.66	1,423,847.66
Total Personnel Services - Salaries			\$1,423,847.66	\$1,423,847.66
200 Personnel Services - Employee Benefits				
210 Group Insurance - Contracted Provider			320,165.34	320,165.34
220 Social Security Contributions			105,500.00	105,500.00
230 PSEERS Retirement Contributions			438,671.64	438,671.64
250 Unemployment Compensation			1,020.56	1,020.56
260 Workers' Compensation			4,031.89	4,031.89
Total Personnel Services - Employee Benefits			\$869,389.43	\$869,389.43
600 Supplies				
610 General Supplies			17,185.00	17,185.00
Total Supplies			\$17,185.00	\$17,185.00
Total 1800 Pre-Kindergarten			\$2,310,422.09	\$2,310,422.09

	Elementary	Secondary	Federal	Total
General Fund (10)				
1801 Pre-K Instruction				
100 Personnel Services - Salaries				
100 Personnel Services - Salaries			1,423,847.66	1,423,847.66
Total Personnel Services - Salaries			\$1,423,847.66	\$1,423,847.66
200 Personnel Services - Employee Benefits				
210 Group Insurance - Contracted Provider			320,165.34	320,165.34
220 Social Security Contributions			105,500.00	105,500.00
230 PSERS Retirement Contributions			438,671.64	438,671.64
250 Unemployment Compensation			1,020.56	1,020.56
260 Workers' Compensation			4,031.89	4,031.89
Total Personnel Services - Employee Benefits			\$869,389.43	\$869,389.43
600 Supplies				
610 General Supplies			17,185.00	17,185.00
Total Supplies			\$17,185.00	\$17,185.00
Total 1801 Pre-K Instruction			\$2,310,422.09	\$2,310,422.09

General Fund (10)

2000 Support Services

100 Personnel Services - Salaries

100 Personnel Services - Salaries

Total Personnel Services - Salaries

18,612,978.71
\$18,612,978.71

200 Personnel Services - Employee Benefits

210 Group Insurance - Contracted Provider

220 Social Security/Contributions

230 PSERS Retirement Contributions

250 Unemployment Compensation

260 Workers' Compensation

Total Personnel Services - Employee Benefits

4,901,789.52
1,381,480.26
5,643,923.47
14,879.91
58,764.78
\$12,000,837.94

300 Purchased Professional and Technical Services

310 Official / Administrative Services

329 Professional Educational Services - Other

Total Purchased Professional and Technical Services

846,291.61
11,472.85
\$857,764.46

400 Purchased Property Services

420 Utility Services

430 Repairs and Maintenance Services

440 Rentals

Total Purchased Property Services

1,839,006.00
965,517.07
282,965.77
\$3,087,488.84

500 Other Purchased Services

513 Contracted Carriers

516 Student Transportation Services From the IU

521 Fire Insurance

523 General Property and Liability Insurance

529 Other Insurance

530 Communications

541 Advertising Related to Federal Grant Awards

549 Other Advertising/Public Relations

550 Printing and Binding

580 Travel

595 IU Payments By Withholding

Total Other Purchased Services

4,030,368.00
222,658.00
5,393.00
438,532.00
1,750.00
415,077.04
1,909.00
13,683.50
962.71
41,680.79
107,090.20
\$5,279,104.24

600 Supplies

610 General Supplies

620 Energy

640 Books and Periodicals

Total Supplies

689,238.55
451,711.00
39,827.70
\$1,180,777.25

700 Property

752 Capital Equipment - Original and Additional

762 Capitalized Equipment - Replacement

Total Property

154,387.68
459,148.50
\$613,536.18

General Fund (10)	
2000 Support Services	
800 Other Objects	
810 Dues and Fees	
Total Other Objects	163,245.31
Total 2000 Support Services	\$163,245.31
	<u>Total</u>
	\$41,795,732.93

	Elementary	Secondary	Federal	Total
General Fund (10)				
2100 Support Services - Students				
100 Personnel Services - Salaries				
100 Personnel Services - Salaries	1,372,302.92	1,485,646.28	108,722.09	3,275,732.11
Total Personnel Services - Salaries	\$1,372,302.92	\$1,485,646.28	\$108,722.09	\$3,275,732.11
200 Personnel Services - Employee Benefits				
210 Group Insurance - Contracted Provider	348,647.90	377,701.89		797,050.79
220 Social Security Contributions	102,587.85	111,059.17	8,317.21	244,934.05
230 PSERS Retirement Contributions	439,070.24	474,333.71	8,149.25	1,017,223.43
250 Unemployment Compensation	1,102.65	1,194.52		2,541.59
260 Workers' Compensation	4,817.43	5,218.87		10,036.30
Total Personnel Services - Employee Benefits	\$896,226.07	\$969,508.16	\$16,466.46	\$2,071,786.16
300 Purchased Professional and Technical Services				
310 Official / Administrative Services	1,521.60	1,648.40		3,170.00
Total Purchased Professional and Technical Services	\$1,521.60	\$1,648.40		\$3,170.00
500 Other Purchased Services				
580 Travel	168.43	182.46		637.30
Total Other Purchased Services	\$168.43	\$182.46		\$637.30
600 Supplies				
610 General Supplies	503.96	545.96		1,049.92
Total Supplies	\$503.96	\$545.96		\$1,049.92
Total 2100 Support Services - Students	\$2,270,722.98	\$2,457,531.26	\$125,188.55	\$5,352,375.49

General Fund (10)		Elementary	Secondary	Federal	Total
2110 Supervision of Student Services					
100 Personnel Services – Salaries					
100 Personnel Services – Salaries		278,547.50	301,759.81		580,307.31
Total Personnel Services – Salaries		\$278,547.50	\$301,759.81		\$580,307.31
200 Personnel Services – Employee Benefits					
210 Group Insurance – Contracted Provider		30,629.74	33,182.22		63,811.96
220 Social Security Contributions		20,550.05	22,262.56		42,812.61
230 PSERS Retirement Contributions		85,816.54	92,967.92		178,784.46
250 Unemployment Compensation		130.31	141.16		271.47
260 Workers' Compensation		2,490.19	2,697.70		5,187.89
Total Personnel Services – Employee Benefits		\$139,616.83	\$151,251.56		\$290,868.39
500 Other Purchased Services					
580 Travel		168.43	182.46		350.89
Total Other Purchased Services		\$168.43	\$182.46		\$350.89
Total 2110 Supervision of Student Services		\$418,332.76	\$453,193.83		\$871,526.59

General Fund (10)

2111 Supervision of Student Services - Head of Component

100 Personnel Services - Salaries

100 Personnel Services - Salaries

Total Personnel Services - Salaries

200 Personnel Services - Employee Benefits

210 Group Insurance - Contracted Provider

220 Social Security Contributions

230 PSEERS Retirement Contributions

250 Unemployment Compensation

260 Workers' Compensation

Total Personnel Services - Employee Benefits

500 Other Purchased Services

580 Travel

Total Other Purchased Services

Total 2111 Supervision of Student Services - Head of Component

	Elementary	Secondary	Federal	Total
100 Personnel Services - Salaries	18,906.62	20,482.18		39,388.80
Total Personnel Services - Salaries	\$18,906.62	\$20,482.18		\$39,388.80
200 Personnel Services - Employee Benefits				
210 Group Insurance - Contracted Provider	997.16	1,080.25		2,077.41
220 Social Security Contributions	1,183.86	1,282.52		2,466.38
230 PSEERS Retirement Contributions	5,168.48	5,599.19		10,767.67
250 Unemployment Compensation	5.92	6.41		12.33
260 Workers' Compensation	101.09	109.51		210.60
Total Personnel Services - Employee Benefits	\$7,456.51	\$8,077.88		\$15,534.39
500 Other Purchased Services				
580 Travel	168.43	182.46		350.89
Total Other Purchased Services	\$168.43	\$182.46		\$350.89
Total 2111 Supervision of Student Services - Head of Component	\$26,531.56	\$28,742.52		\$55,274.08

General Fund (10)

2119 Supervision of Student Services - All Other Supervision

	Elementary	Secondary	Federal	Total
100 <u>Personnel Services - Salaries</u>				
100 Personnel Services - Salaries	259,640.88	281,277.63		540,918.51
Total Personnel Services - Salaries	\$259,640.88	\$281,277.63		\$540,918.51
200 <u>Personnel Services - Employee Benefits</u>				
210 Group Insurance - Contracted Provider	29,632.58	32,101.97		61,734.55
220 Social Security Contributions	19,366.19	20,980.04		40,346.23
230 PSERS Retirement Contributions	80,648.06	87,368.73		168,016.79
250 Unemployment Compensation	124.39	134.75		259.14
260 Workers' Compensation	2,389.10	2,588.19		4,977.29
Total Personnel Services - Employee Benefits	\$132,160.32	\$143,173.68		\$275,334.00
Total 2119 Supervision of Student Services - All Other Supervision	\$391,801.20	\$424,451.31		\$816,252.51

	Elementary	Secondary	Federal	Total
General Fund (10)				
2120 Guidance Services				
100 Personnel Services - Salaries				
100 Personnel Services - Salaries	594,296.11	643,820.79		1,238,116.90
Total Personnel Services - Salaries	\$594,296.11	\$643,820.79		\$1,238,116.90
200 Personnel Services - Employee Benefits				
210 Group Insurance - Contracted Provider	265,279.32	287,385.93		552,665.25
220 Social Security Contributions	44,520.48	48,230.52		92,751.00
230 PSERS Retirement Contributions	187,080.87	202,670.94		389,751.81
250 Unemployment Compensation	747.13	809.39		1,556.52
260 Workers' Compensation	2,327.24	2,521.17		4,848.41
Total Personnel Services - Employee Benefits	\$499,955.04	\$541,617.95		\$1,041,572.99
300 Purchased Professional and Technical Services				
310 Official / Administrative Services	1,521.60	1,648.40		3,170.00
Total Purchased Professional and Technical Services	\$1,521.60	\$1,648.40		\$3,170.00
600 Supplies				
610 General Supplies	503.96	545.96		1,049.92
Total Supplies	\$503.96	\$545.96		\$1,049.92
Total 2120 Guidance Services	\$1,096,276.71	\$1,187,633.10		\$2,283,909.81

	Elementary	Secondary	Federal	Total
General Fund (10)				
2130 Attendance Services				
100 Personnel Services - Salaries				
100 Personnel Services - Salaries				44,528.42
Total Personnel Services - Salaries				\$44,528.42
200 Personnel Services - Employee Benefits				
210 Group Insurance - Contracted Provider				43,518.66
220 Social Security Contributions				3,394.91
230 PERS Retirement Contributions				13,513.02
250 Unemployment Compensation				125.69
Total Personnel Services - Employee Benefits				\$60,552.28
Total 2130 Attendance Services				\$105,080.70

	Elementary	Secondary	Federal	Total
General Fund (10)				
2140 Psychological Services				
100 Personnel Services - Salaries				
100 Personnel Services - Salaries	153,779.36	161,048.99		314,828.35
Total Personnel Services - Salaries	\$153,779.36	\$161,048.99		\$314,828.35
200 Personnel Services - Employee Benefits				
210 Group Insurance - Contracted Provider	31,611.45	34,245.73		65,857.18
220 Social Security Contributions	11,556.05	12,094.83		23,650.88
230 PSEERS Retirement Contributions	47,154.55	49,418.83		96,573.38
250 Unemployment Compensation	99.56	107.85		207.41
Total Personnel Services - Employee Benefits	\$90,421.61	\$95,867.24		\$186,288.85
Total 2140 Psychological Services	\$244,200.97	\$256,916.23		\$501,117.20

	Elementary	Secondary	Federal	Total
General Fund (10)				
2150 Speech Pathology and Audiology Services				
100 Personnel Services - Salaries				
100 Personnel Services - Salaries	324,175.57	351,190.20		675,365.77
Total Personnel Services - Salaries	\$324,175.57	\$351,190.20		\$675,365.77
200 Personnel Services - Employee Benefits				
210 Group Insurance - Contracted Provider	17,107.64	18,533.28		35,640.92
220 Social Security Contributions	24,403.30	26,436.90		50,840.20
230 PSERS Retirement Contributions	99,976.48	108,307.85		208,284.33
250 Unemployment Compensation	101.78	110.26		212.04
Total Personnel Services - Employee Benefits	\$141,589.20	\$153,388.29		\$294,977.49
Total 2150 Speech Pathology and Audiology Services	\$465,764.77	\$504,578.49		\$970,343.26

	Elementary	Secondary	Federal	Total
General Fund (10)				
2160 Social Work Services				
100 <u>Personnel Services - Salaries</u>				
100 Personnel Services - Salaries				204,020.24
Total Personnel Services - Salaries				\$204,020.24
200 <u>Personnel Services - Employee Benefits</u>				
210 Group Insurance - Contracted Provider				10,760.86
220 Social Security Contributions				15,094.27
230 PSERS Retirement Contributions				63,328.18
250 Unemployment Compensation				64.04
Total Personnel Services - Employee Benefits				\$89,247.35
500 <u>Other Purchased Services</u>				
580 Travel				286.41
Total Other Purchased Services				\$286.41
Total 2160 Social Work Services				\$293,554.00

	Elementary	Secondary	Federal	Total
General Fund (10)				
2170 Student Accounting Services				
100 Personnel Services - Salaries				
100 Personnel Services - Salaries				60,512.16
Total Personnel Services - Salaries				\$60,512.16
200 Personnel Services - Employee Benefits				
210 Group Insurance - Contracted Provider				16,421.48
220 Social Security Contributions				4,480.64
230 PSERS Retirement Contributions				18,829.03
250 Unemployment Compensation				54.89
Total Personnel Services - Employee Benefits				\$39,785.84
Total 2170 Student Accounting Services				\$100,298.00

General Fund (10)		Elementary	Secondary	Federal	Total
2190 Other Student Services					
100 Personnel Services - Salaries					
100 Personnel Services - Salaries		21,504.38	27,826.49	108,722.09	158,052.96
Total Personnel Services - Salaries		\$21,504.38	\$27,826.49	\$108,722.09	\$158,052.96
200 Personnel Services - Employee Benefits					
210 Group Insurance - Contracted Provider		4,019.75	4,354.73		8,374.48
220 Social Security Contributions		1,557.97	2,034.36	8,317.21	11,909.54
230 PSERS Retirement Contributions		19,041.80	20,968.17	8,149.25	48,159.22
250 Unemployment Compensation		23.87	25.86		49.73
Total Personnel Services - Employee Benefits		\$24,643.39	\$27,383.12	\$16,466.46	\$68,492.97
Total 2190 Other Student Services		\$46,147.77	\$55,209.61	\$125,188.55	\$226,545.93

	Elementary	Secondary	Federal	Total
General Fund (10)				
2200 Support Services - Instructional Staff				
100 Personnel Services - Salaries				
100 Personnel Services - Salaries	813,263.65	876,343.18		1,689,606.83
Total Personnel Services - Salaries	\$813,263.65	\$876,343.18		\$1,689,606.83
200 Personnel Services - Employee Benefits				
210 Group Insurance - Contracted Provider	191,982.70	207,981.25		399,963.95
220 Social Security Contributions	60,393.57	65,067.42		125,460.99
230 PSERS Retirement Contributions	252,749.85	272,403.27		525,153.12
250 Unemployment Compensation	612.28	663.32		1,275.60
260 Workers' Compensation	2,417.19	2,618.62		5,035.81
Total Personnel Services - Employee Benefits	\$508,155.59	\$548,733.88		\$1,056,889.47
300 Purchased Professional and Technical Services				
310 Official / Administrative Services	15,181.03	16,446.12		31,627.15
Total Purchased Professional and Technical Services	\$15,181.03	\$16,446.12		\$31,627.15
400 Purchased Property Services				
430 Repairs and Maintenance Services	3,014.30	3,265.50		6,279.80
Total Purchased Property Services	\$3,014.30	\$3,265.50		\$6,279.80
500 Other Purchased Services				
580 Travel	17,022.04	18,440.56		35,462.60
Total Other Purchased Services	\$17,022.04	\$18,440.56		\$35,462.60
600 Supplies				
610 General Supplies	37,227.83	34,974.70		72,202.53
640 Books and Periodicals	18,987.22	20,569.48		39,556.70
Total Supplies	\$56,215.05	\$55,544.18		\$111,759.23
800 Other Objects				
810 Dues and Fees	67.71	73.35		141.06
Total Other Objects	\$67.71	\$73.35		\$141.06
Total 2200 Support Services - Instructional Staff	\$1,412,919.37	\$1,518,846.77		\$2,931,766.14

	Elementary	Secondary	Federal	Total
General Fund (10)				
2210 Supervision of Educational Media Services				
600 Supplies				
610 General Supplies	4,942.74			4,942.74
Total Supplies	\$4,942.74			\$4,942.74
Total 2210 Supervision of Educational Media Services	\$4,942.74			\$4,942.74

	Elementary	Secondary	Federal	Total
General Fund (10)				
2211 Supervision of Educational Media Services - Head of Component				
600 Supplies				
610 General Supplies	4,942.74			4,942.74
Total Supplies	\$4,942.74			\$4,942.74
Total 2211 Supervision of Educational Media Services - Head of Component	\$4,942.74			\$4,942.74

	Elementary	Secondary	Federal	Total
General Fund (10)				
2220 Technology Support Services				
600 Supplies				
610 General Supplies				
Total Supplies	17,038.00	18,457.00		35,495.00
Total 2220 Technology Support Services	\$17,038.00	\$18,457.00		\$35,495.00
	\$17,038.00	\$18,457.00		\$35,495.00

	Elementary	Secondary	Federal	Total
General Fund (10)				
2250 School Library Services				
100 Personnel Services - Salaries				
100 Personnel Services - Salaries	559,538.76	606,167.00		1,165,705.76
Total Personnel Services - Salaries	\$559,538.76	\$606,167.00		\$1,165,705.76
200 Personnel Services - Employee Benefits				
210 Group Insurance - Contracted Provider	140,824.71	152,560.10		293,384.81
220 Social Security Contributions	41,528.14	44,988.81		86,516.95
230 PSERS Retirement Contributions	176,201.97	190,885.46		367,087.43
250 Unemployment Compensation	455.13	493.07		948.20
260 Workers' Compensation	1,624.70	1,760.10		3,384.80
Total Personnel Services - Employee Benefits	\$360,634.65	\$390,687.54		\$751,322.19
400 Purchased Property Services				
430 Repairs and Maintenance Services	1,341.12	1,452.88		2,794.00
Total Purchased Property Services	\$1,341.12	\$1,452.88		\$2,794.00
600 Supplies				
610 General Supplies	3,004.92	3,255.34		6,260.26
640 Books and Periodicals	18,987.22	20,569.48		39,556.70
Total Supplies	\$21,992.14	\$23,824.82		\$45,816.96
Total 2250 School Library Services	\$943,506.67	\$1,022,132.24		\$1,965,638.91

	Elementary	Secondary	Federal	Total
General Fund (10)				
2260 Instruction and Curriculum Development Services				
100 Personnel Services - Salaries				
100 Personnel Services - Salaries	218,515.75	218,527.29		437,043.04
Total Personnel Services - Salaries	\$218,515.75	\$218,527.29		\$437,043.04
200 Personnel Services - Employee Benefits				
220 Social Security Contributions	16,716.41	16,717.32		33,433.73
230 PSERS Retirement Contributions	65,621.71	65,625.39		131,247.10
Total Personnel Services - Employee Benefits	\$82,338.12	\$82,342.71		\$164,680.83
500 Other Purchased Services				
580 Travel	1,953.59	2,116.39		4,069.98
Total Other Purchased Services	\$1,953.59	\$2,116.39		\$4,069.98
600 Supplies				
610 General Supplies	1,223.77	1,325.76		2,549.53
Total Supplies	\$1,223.77	\$1,325.76		\$2,549.53
Total 2260 Instruction and Curriculum Development Services	\$304,031.23	\$304,312.15		\$608,343.38

	Elementary	Secondary	Federal	Total
General Fund (10)				
2270 Instructional Staff Professional Development Services				
100 Personnel Services - Salaries				
100 Personnel Services - Salaries	3,944.07	4,272.74		8,216.81
Total Personnel Services - Salaries	\$3,944.07	\$4,272.74		\$8,216.81
200 Personnel Services - Employee Benefits				
210 Group Insurance - Contracted Provider	134.39	145.59		279.98
230 PSERS Retirement Contributions	43.84	47.49		91.33
250 Unemployment Compensation	0.45	0.49		0.94
260 Workers' Compensation	6.80	7.36		14.16
Total Personnel Services - Employee Benefits	\$185.48	\$200.93		\$386.41
300 Purchased Professional and Technical Services				
310 Official / Administrative Services	15,181.03	16,446.12		31,627.15
Total Purchased Professional and Technical Services	\$15,181.03	\$16,446.12		\$31,627.15
500 Other Purchased Services				
580 Travel				
Total Other Purchased Services	14,793.77	16,026.59		30,820.36
600 Supplies				
610 General Supplies	10,610.18	11,494.37		22,104.55
Total Supplies	\$10,610.18	\$11,494.37		\$22,104.55
Total 2270 Instructional Staff Professional Development Services	\$44,714.53	\$48,440.75		\$93,155.28

	Elementary	Secondary	Federal	Total
General Fund (10)				
2290 Other Instructional Staff Services				
100 Personnel Services - Salaries				
100 Personnel Services - Salaries	31,265.07	47,376.15		78,641.22
Total Personnel Services - Salaries	\$31,265.07	\$47,376.15		\$78,641.22
200 Personnel Services - Employee Benefits				
210 Group Insurance - Contracted Provider	51,023.60	55,275.56		106,299.16
220 Social Security Contributions	2,149.02	3,361.29		5,510.31
230 PSERS Retirement Contributions	10,882.33	15,844.93		26,727.26
250 Unemployment Compensation	156.70	169.76		326.46
260 Workers' Compensation	785.69	851.16		1,636.85
Total Personnel Services - Employee Benefits	\$64,997.34	\$75,502.70		\$140,500.04
400 Purchased Property Services				
430 Repairs and Maintenance Services	1,673.18	1,812.62		3,485.80
Total Purchased Property Services	\$1,673.18	\$1,812.62		\$3,485.80
500 Other Purchased Services				
580 Travel	274.68	297.58		572.26
Total Other Purchased Services	\$274.68	\$297.58		\$572.26
600 Supplies				
610 General Supplies	408.22	442.23		850.45
Total Supplies	\$408.22	\$442.23		\$850.45
800 Other Objects				
810 Dues and Fees	67.71	73.35		141.06
Total Other Objects	\$67.71	\$73.35		\$141.06
Total 2290 Other Instructional Staff Services	\$98,686.20	\$125,504.63		\$224,190.83

	Elementary	Secondary	Federal	Total
General Fund (10)				
2300 Support Services - Administration				
100 Personnel Services - Salaries	2,033,517.41	2,202,977.19		4,910,234.70
Total Personnel Services - Salaries	\$2,033,517.41	\$2,202,977.19		\$4,910,234.70
200 Personnel Services - Employee Benefits				
210 Group Insurance - Contracted Provider	524,440.94	568,144.36		1,245,353.78
220 Social Security Contributions	150,742.93	163,304.84		361,856.22
230 PSERS Retirement Contributions	628,519.39	680,896.00		1,427,277.92
250 Unemployment Compensation	1,665.49	1,804.28		3,969.72
260 Workers' Compensation	7,071.71	7,661.02		15,681.67
Total Personnel Services - Employee Benefits	\$1,312,440.46	\$1,421,810.50		\$3,054,139.31
300 Purchased Professional and Technical Services				
310 Official / Administrative Services				
Total Purchased Professional and Technical Services				\$364,782.45
400 Purchased Property Services				
430 Repairs and Maintenance Services				
440 Rentals	89.41	96.86		186.27
Total Purchased Property Services	1,951.57	2,114.20		4,065.77
500 Other Purchased Services				
530 Communications				
549 Other Advertising/Public Relations				
550 Printing and Binding				
580 Travel	5,714.42	6,190.62		11,905.04
Total Other Purchased Services	\$5,714.42	\$6,190.62		\$29,694.14
600 Supplies				
610 General Supplies	2,069.54	2,242.01		23,921.32
Total Supplies	\$2,069.54	\$2,242.01		\$23,921.32
700 Property				
752 Capital Equipment - Original and Additional				
762 Capitalized Equipment - Replacement				
Total Property				473.68
800 Other Objects				
810 Dues and Fees	13,353.60	14,466.40		156,721.25
Total Other Objects	\$13,353.60	\$14,466.40		\$156,721.25
Total 2300 Support Services - Administration	\$3,369,136.41	\$3,649,897.78		\$8,544,440.39

	Elementary	Secondary	Federal	Total
General Fund (10)				
2310 Board Services				
100 Personnel Services - Salaries				
100 Personnel Services - Salaries				
Total Personnel Services - Salaries				
200 Personnel Services - Employee Benefits				
210 Group Insurance - Contracted Provider				39,194.71
220 Social Security Contributions				\$39,194.71
230 PSERS Retirement Contributions				8,278.48
250 Unemployment Compensation				2,988.21
260 Workers' Compensation				12,222.61
Total Personnel Services - Employee Benefits				27.00
500 Other Purchased Services				24.63
549 Other Advertising/Public Relations				\$23,540.93
580 Travel				13,683.50
Total Other Purchased Services				2,764.47
600 Supplies				\$16,447.97
610 General Supplies				9,672.97
Total Supplies				\$9,672.97
800 Other Objects				112,762.87
810 Dues and Fees				\$112,762.87
Total Other Objects				\$201,619.45
Total 2310 Board Services				

	Elementary	Secondary	Federal	Total
General Fund (10)				
2330 Tax Assessment and Collection Services				
100 Personnel Services - Salaries				
100 Personnel Services - Salaries				
Total Personnel Services - Salaries				418,068.47
200 Personnel Services - Employee Benefits				
210 Group Insurance - Contracted Provider				100,432.33
220 Social Security Contributions				31,466.74
230 PSERS Retirement Contributions				38,436.91
250 Unemployment Compensation				327.62
260 Workers' Compensation				877.82
Total Personnel Services - Employee Benefits				\$171,541.42
Total 2330 Tax Assessment and Collection Services				\$589,609.89

	<u>Elementary</u>	<u>Secondary</u>	<u>Federal</u>	<u>Total</u>
General Fund (10)				
2350 Legal and Accounting Services				
300 <u>Purchased Professional and Technical Services</u>				
310 Official / Administrative Services				
Total Purchased Professional and Technical Services				364,782.45
Total 2350 Legal and Accounting Services				\$364,782.45
				\$364,782.45

	Elementary	Secondary	Federal	Total
General Fund (10)				
2360 Office of the Superintendent / Executive Director Services				
100 Personnel Services - Salaries				
100 Personnel Services - Salaries				216,476.92
Total Personnel Services - Salaries				\$216,476.92
200 Personnel Services - Employee Benefits				
210 Group Insurance - Contracted Provider				44,057.67
220 Social Security Contributions				13,353.50
230 PSEERS Retirement Contributions				67,203.01
250 Unemployment Compensation				145.33
260 Workers' Compensation				46.49
Total Personnel Services - Employee Benefits				\$124,806.00
500 Other Purchased Services				
550 Printing and Binding				962.71
580 Travel				378.42
Total Other Purchased Services				\$1,341.13
600 Supplies				
610 General Supplies				9,936.80
Total Supplies				\$9,936.80
700 Property				
752 Capital Equipment - Original and Additional				473.68
762 Capitalized Equipment - Replacement				221.50
Total Property				\$695.18
800 Other Objects				
810 Dues and Fees				16,138.38
Total 2360 Office of the Superintendent / Executive Director Services				\$369,394.41

	Elementary	Secondary	Federal	Total
General Fund (10)				
2380 Office of the Principal Services				
100 Personnel Services - Salaries				
100 Personnel Services - Salaries	2,033,517.41	2,202,977.19		4,236,494.60
Total Personnel Services - Salaries	\$2,033,517.41	\$2,202,977.19		\$4,236,494.60
200 Personnel Services - Employee Benefits				
210 Group Insurance - Contracted Provider	524,440.94	568,144.36		1,092,585.30
220 Social Security Contributions	150,742.93	163,304.84		314,047.77
230 PSERS Retirement Contributions	628,519.39	680,896.00		1,309,415.39
250 Unemployment Compensation	1,665.49	1,804.28		3,469.77
260 Workers' Compensation	7,071.71	7,661.02		14,732.73
Total Personnel Services - Employee Benefits	\$1,312,440.46	\$1,421,810.50		\$2,734,250.96
400 Purchased Property Services				
430 Repairs and Maintenance Services	89.41	96.86		186.27
440 Rentals	1,951.57	2,114.20		4,065.77
Total Purchased Property Services	\$2,040.98	\$2,211.06		\$4,252.04
500 Other Purchased Services				
530 Communications	5,714.42	6,190.62		11,905.04
Total Other Purchased Services	\$5,714.42	\$6,190.62		\$11,905.04
600 Supplies				
610 General Supplies	2,069.54	2,242.01		4,311.55
Total Supplies	\$2,069.54	\$2,242.01		\$4,311.55
800 Other Objects				
810 Dues and Fees	13,353.60	14,466.40		27,820.00
Total 2380 Office of the Principal Services	\$3,369,136.41	\$3,649,897.78		\$7,019,034.19

General Fund (10)

	Elementary	Secondary	Federal	Total
2400 Support Services - Pupil Health				
100 Personnel Services - Salaries				
100 Personnel Services - Salaries				
Total Personnel Services - Salaries				1,256,639.00
200 Personnel Services - Employee Benefits				\$1,256,639.00
210 Group Insurance - Contracted Provider				
220 Social Security Contributions				
230 PSERS Retirement Contributions				327,410.00
250 Unemployment Compensation				92,793.00
260 Workers' Compensation				389,414.00
Total Personnel Services - Employee Benefits				1,044.00
300 Purchased Professional and Technical Services				4,122.00
310 Official / Administrative Services				\$614,783.00
Total Purchased Professional and Technical Services				38,000.00
400 Purchased Property Services				\$38,000.00
430 Repairs and Maintenance Services				
Total Purchased Property Services				5,537.00
500 Other Purchased Services				\$5,537.00
580 Travel				
Total Other Purchased Services				662.00
600 Supplies				\$662.00
610 General Supplies				
Total Supplies				17,076.00
Total 2400 Support Services - Pupil Health				\$17,076.00
				\$2,132,697.00

	Elementary	Secondary	Federal	Total
General Fund (10)				
2420 Medical Services				
100 Personnel Services - Salaries				
100 Personnel Services - Salaries				
Total Personnel Services - Salaries				431,866.00
200 Personnel Services - Employee Benefits				\$431,866.00
210 Group Insurance - Contracted Provider				92,729.00
220 Social Security Contributions				31,224.00
230 PSEERS Retirement Contributions				133,045.00
250 Unemployment Compensation				254.00
260 Workers' Compensation				87.00
Total Personnel Services - Employee Benefits				\$257,339.00
300 Purchased Professional and Technical Services				
310 Official / Administrative Services				
Total Purchased Professional and Technical Services				38,000.00
400 Purchased Property Services				\$38,000.00
430 Repairs and Maintenance Services				5,537.00
Total Purchased Property Services				\$5,537.00
500 Other Purchased Services				
580 Travel				662.00
Total Other Purchased Services				\$662.00
600 Supplies				
610 General Supplies				14,489.00
Total Supplies				\$14,489.00
Total 2420 Medical Services				\$747,893.00

	Elementary	Secondary	Federal	Total
General Fund (10)				
2440 Nursing Services				
100 Personnel Services - Salaries				
100 Personnel Services - Salaries				
Total Personnel Services - Salaries				824,773.00
200 Personnel Services - Employee Benefits				824,773.00
210 Group Insurance - Contracted Provider				234,681.00
220 Social Security Contributions				61,569.00
230 PSERS Retirement Contributions				286,369.00
250 Unemployment Compensation				790.00
260 Workers' Compensation				4,035.00
Total Personnel Services - Employee Benefits				557,444.00
Total 2440 Nursing Services				1,382,217.00

	Elementary	Secondary	Federal	Total
General Fund (10)				
2450 Nonpublic Health Services				
600 Supplies				
610 General Supplies				
Total Supplies				2,587.00
Total 2450 Nonpublic Health Services				\$2,587.00
				\$2,587.00

	Elementary	Secondary	Federal	Total
General Fund (10)				
2500 Support Services - Business				
100 Personnel Services - Salaries				
100 Personnel Services - Salaries				
Total Personnel Services - Salaries				584,767.07
200 Personnel Services - Employee Benefits				\$584,767.07
210 Group Insurance - Contracted Provider				148,311.00
220 Social Security Contributions				42,776.00
230 PSEERS Retirement Contributions				182,088.00
250 Unemployment Compensation				473.00
260 Workers' Compensation				1,867.00
Total Personnel Services - Employee Benefits				\$375,515.00
300 Purchased Professional and Technical Services				
310 Official / Administrative Services				
329 Professional Educational Services - Other				35,037.01
Total Purchased Professional and Technical Services				11,472.85
400 Purchased Property Services				\$46,509.86
430 Repairs and Maintenance Services				87,449.00
Total Purchased Property Services				\$87,449.00
500 Other Purchased Services				
530 Communications				6,808.00
580 Travel				1,776.00
Total Other Purchased Services				\$8,584.00
600 Supplies				
610 General Supplies				68,522.40
Total Supplies				\$68,522.40
800 Other Objects				
810 Dues and Fees				1,143.00
Total Other Objects				\$1,143.00
Total 2500 Support Services - Business				\$1,172,490.33

General Fund (10)

	Elementary	Secondary	Federal	Total
2510 Fiscal Services				
100 <u>Personnel Services - Salaries</u>				
100 Personnel Services - Salaries				
Total Personnel Services - Salaries				
200 <u>Personnel Services - Employee Benefits</u>				
210 Group Insurance - Contracted Provider				496,190.06
220 Social Security Contributions				\$496,190.06
230 PSEERS Retirement Contributions				141,934.00
250 Unemployment Compensation				36,293.00
260 Workers' Compensation				154,593.00
Total Personnel Services - Employee Benefits				429.00
Total Personnel Services - Salaries				1,867.00
300 <u>Purchased Professional and Technical Services</u>				\$335,116.00
310 Official / Administrative Services				
329 Professional Educational Services - Other				26,776.01
Total Purchased Professional and Technical Services				11,472.85
500 <u>Other Purchased Services</u>				\$38,248.86
530 Communications				
580 Travel				
Total Other Purchased Services				6,808.00
600 <u>Supplies</u>				1,776.00
610 General Supplies				\$8,584.00
Total Supplies				46,763.40
800 <u>Other Objects</u>				\$46,763.40
810 Dues and Fees				
Total Other Objects				1,143.00
Total 2510 Fiscal Services				\$1,143.00
				\$926,045.32

General Fund (10)

	<u>Elementary</u>	<u>Secondary</u>	<u>Federal</u>	<u>Total</u>
2511 Supervision of Fiscal Services - Head of Component				
100 <u>Personnel Services - Salaries</u>				
100 Personnel Services - Salaries				170,059.00
Total Personnel Services - Salaries				
200 <u>Personnel Services - Employee Benefits</u>				\$170,059.00
210 Group Insurance - Contracted Provider				34,432.00
220 Social Security Contributions				12,629.98
230 PSERS Retirement Contributions				51,068.00
Total Personnel Services - Employee Benefits				
300 <u>Purchased Professional and Technical Services</u>				\$98,129.98
310 Official / Administrative Services				334.70
329 Professional Educational Services - Other				143.41
Total Purchased Professional and Technical Services				
500 <u>Other Purchased Services</u>				\$478.11
530 Communications				
580 Travel				85.10
Total Other Purchased Services				
600 <u>Supplies</u>				22.20
610 General Supplies				\$107.30
Total Supplies				
Total 2511 Supervision of Fiscal Services - Head of Component				
				\$269,363.67

	Elementary	Secondary	Federal	Total
2512 Budgeting Services				
100 Personnel Services - Salaries				
100 Personnel Services - Salaries				
Total Personnel Services - Salaries				
200 Personnel Services - Employee Benefits				
210 Group Insurance - Contracted Provider				38,111.75
220 Social Security Contributions				\$38,111.75
230 PSERS Retirement Contributions				4,529.00
250 Unemployment Compensation				2,767.00
Total Personnel Services - Employee Benefits				11,854.00
Total 2512 Budgeting Services				10.00
				\$19,160.00
				\$57,271.75

General Fund (10)

	Elementary	Secondary	Federal	Total
2513 Receiving and Disbursing Funds Services				
100 Personnel Services - Salaries				
100 Personnel Services - Salaries				
Total Personnel Services - Salaries				
200 Personnel Services - Employee Benefits				
210 Group Insurance - Contracted Provider				
220 Social Security Contributions				
230 PERS Retirement Contributions				
250 Unemployment Compensation				
Total Personnel Services - Employee Benefits				
Total 2513 Receiving and Disbursing Funds Services				
				62,640.76
				\$62,640.76
				7,889.00
				4,520.00
				19,486.00
				18.00
				\$31,913.00
				\$94,553.76

	<u>Elementary</u>	<u>Secondary</u>	<u>Federal</u>	<u>Total</u>
General Fund (10)				
2514 Payroll Services				
100 Personnel Services - Salaries				
100 Personnel Services - Salaries				
Total Personnel Services - Salaries				
200 Personnel Services - Employee Benefits				
210 Group Insurance - Contracted Provider				
220 Social Security Contributions				
230 PSEERS Retirement Contributions				
250 Unemployment Compensation				
Total Personnel Services - Employee Benefits				
Total 2514 Payroll Services				
				81,429.18
				\$81,429.18
				9,716.00
				5,929.00
				25,328.00
				22.00
				\$40,995.00
				\$122,424.18

	<u>Elementary</u>	<u>Secondary</u>	<u>Federal</u>	<u>Total</u>
General Fund (10)				
2515 Financial Accounting Services				
100 <u>Personnel Services – Salaries</u>				
100 Personnel Services – Salaries				40,194.88
Total Personnel Services – Salaries				\$40,194.88
200 Personnel Services – Employee Benefits				
210 Group Insurance – Contracted Provider				3,534.00
220 Social Security Contributions				2,905.00
230 PSERS Retirement Contributions				12,497.00
250 Unemployment Compensation				9.00
Total Personnel Services – Employee Benefits				\$18,945.00
Total 2515 Financial Accounting Services				\$59,139.88

	Elementary	Secondary	Federal	Total
General Fund (10)				
2519 Other Fiscal Services				
100 <u>Personnel Services - Salaries</u>				
100 Personnel Services - Salaries				103,754.49
Total Personnel Services - Salaries				\$103,754.49
200 <u>Personnel Services - Employee Benefits</u>				
210 Group Insurance - Contracted Provider				81,834.00
220 Social Security Contributions				7,542.02
230 PSERS Retirement Contributions				34,360.00
250 Unemployment Compensation				370.00
260 Workers' Compensation				1,867.00
Total Personnel Services - Employee Benefits				\$125,973.02
300 <u>Purchased Professional and Technical Services</u>				
310 Official / Administrative Services				26,441.31
329 Professional Educational Services - Other				11,329.44
Total Purchased Professional and Technical Services				\$37,770.75
500 <u>Other Purchased Services</u>				
530 Communications				6,722.90
580 Travel				1,753.80
Total Other Purchased Services				\$8,476.70
600 <u>Supplies</u>				
610 General Supplies				46,174.12
Total Supplies				\$46,174.12
800 <u>Other Objects</u>				
810 Dues and Fees				1,143.00
Total Other Objects				\$1,143.00
Total 2519 Other Fiscal Services				\$323,292.08

	Elementary	Secondary	Federal	Total
General Fund (10)				
2540 Printing, Publishing and Duplicating Services				
100 Personnel Services - Salaries				
100 Personnel Services - Salaries				88,577.01
Total Personnel Services - Salaries				\$88,577.01
200 Personnel Services - Employee Benefits				
210 Group Insurance - Contracted Provider				6,377.00
220 Social Security Contributions				6,483.00
230 PSERS Retirement Contributions				27,495.00
250 Unemployment Compensation				44.00
Total Personnel Services - Employee Benefits				\$40,399.00
300 Purchased Professional and Technical Services				
310 Official / Administrative Services				8,261.00
Total Purchased Professional and Technical Services				\$8,261.00
400 Purchased Property Services				
430 Repairs and Maintenance Services				87,449.00
Total Purchased Property Services				\$87,449.00
600 Supplies				
610 General Supplies				21,759.00
Total Supplies				\$21,759.00
Total 2540 Printing, Publishing and Duplicating Services				\$246,445.01

	Elementary	Secondary	Federal	Total
General Fund (10)				
2600 Operation and Maintenance of Plant Services				
100 Personnel Services - Salaries				
100 Personnel Services - Salaries				5,606,921.00
Total Personnel Services - Salaries				\$5,606,921.00
200 Personnel Services - Employee Benefits				
210 Group Insurance - Contracted Provider				1,656,759.00
220 Social Security Contributions				419,147.00
230 PSERS Retirement Contributions				1,730,580.00
250 Unemployment Compensation				4,533.00
260 Workers' Compensation				17,906.00
Total Personnel Services - Employee Benefits				\$3,828,925.00
400 Purchased Property Services				
420 Utility Services				1,839,006.00
430 Repairs and Maintenance Services				866,065.00
440 Rentals				278,900.00
Total Purchased Property Services				\$2,983,971.00
500 Other Purchased Services				
521 Fire Insurance				5,393.00
523 General Property and Liability Insurance				438,532.00
529 Other Insurance				1,750.00
530 Communications				396,364.00
Total Other Purchased Services				\$842,039.00
600 Supplies				
610 General Supplies	193,934.10	210,095.28		404,029.38
620 Energy				451,711.00
Total Supplies	\$193,934.10	\$210,095.28		\$855,740.38
700 Property				
752 Capital Equipment - Original and Additional				47,586.00
762 Capitalized Equipment - Replacement				14,997.00
Total Property				\$62,583.00
Total 2600 Operation and Maintenance of Plant Services	\$193,934.10	\$210,095.28		\$14,180,179.38

	Elementary	Secondary	Federal	Total
General Fund (10)				
2610 Supervision of Operation and Maintenance of Plant Services				
100 Personnel Services - Salaries				243,033.97
100 Personnel Services - Salaries				\$243,033.97
Total Personnel Services - Salaries				
200 Personnel Services - Employee Benefits				
210 Group Insurance - Contracted Provider				57,820.00
220 Social Security Contributions				18,209.03
230 PSERS Retirement Contributions				73,365.49
250 Unemployment Compensation				92.00
260 Workers' Compensation				117.00
Total Personnel Services - Employee Benefits				
400 Purchased Property Services				
420 Utility Services				\$149,603.52
430 Repairs and Maintenance Services				18,390.06
440 Rentals				8,660.65
Total Purchased Property Services				
500 Other Purchased Services				
521 Fire Insurance				53.93
523 General Property and Liability Insurance				4,385.32
529 Other Insurance				17.50
530 Communications				3,963.64
Total Other Purchased Services				
600 Supplies				
610 General Supplies				\$8,420.39
620 Energy				4,040.29
Total Supplies				
700 Property				
752 Capital Equipment - Original and Additional				4,517.11
762 Capitalized Equipment - Replacement				142.70
Total Property				
Total 2610 Supervision of Operation and Maintenance of Plant Services				
				\$618.56
				\$440,073.55

	Elementary	Secondary	Federal	Total
General Fund (10)				
2611 Supervision of Operation and Maintenance of Plant Services – Head of Component				
100 Personnel Services – Salaries				
100 Personnel Services – Salaries				126,845.97
Total Personnel Services – Salaries				\$126,845.97
200 Personnel Services – Employee Benefits				
210 Group Insurance – Contracted Provider				30,964.00
220 Social Security Contributions				9,442.03
230 PERS Retirement Contributions				37,641.49
Total Personnel Services – Employee Benefits				\$78,047.52
400 Purchased Property Services				
420 Utility Services				18,390.06
430 Repairs and Maintenance Services				8,660.65
440 Rentals				2,789.00
Total Purchased Property Services				\$29,839.71
500 Other Purchased Services				
521 Fire Insurance				53.93
523 General Property and Liability Insurance				4,385.32
529 Other Insurance				17.50
530 Communications				3,963.64
Total Other Purchased Services				\$8,420.39
600 Supplies				
610 General Supplies				4,040.29
620 Energy				4,517.11
Total Supplies				\$8,557.40
700 Property				
752 Capital Equipment – Original and Additional				475.86
762 Capitalized Equipment - Replacement				142.70
Total Property				\$618.56
Total 2611 Supervision of Operation and Maintenance of Plant Services – Head of Component				\$252,329.55

	Elementary	Secondary	Federal	Total
General Fund (10)				
2619 Supervision of Operation and Maintenance of Plant Services - All Other Supervision				
100 Personnel Services - Salaries				
100 Personnel Services - Salaries				116,188.00
Total Personnel Services - Salaries				\$116,188.00
200 Personnel Services - Employee Benefits				
210 Group Insurance - Contracted Provider				26,856.00
220 Social Security Contributions				8,767.00
230 PSERS Retirement Contributions				35,724.00
250 Unemployment Compensation				92.00
260 Workers' Compensation				117.00
Total Personnel Services - Employee Benefits				\$71,556.00
Total 2619 Supervision of Operation and Maintenance of Plant Services - All Other Supervision				\$187,744.00

	Elementary	Secondary	Federal	Total
General Fund (10)				
2620 Operation of Buildings Services				
100 Personnel Services - Salaries				
100 Personnel Services - Salaries				5,363,887.03
Total Personnel Services - Salaries				\$5,363,887.03
200 Personnel Services - Employee Benefits				
210 Group Insurance - Contracted Provider				1,598,939.00
220 Social Security Contributions				400,937.97
230 PSERS Retirement Contributions				1,657,214.51
250 Unemployment Compensation				4,441.00
260 Workers' Compensation				17,789.00
Total Personnel Services - Employee Benefits				\$3,679,321.48
400 Purchased Property Services				
420 Utility Services				1,820,615.94
430 Repairs and Maintenance Services				867,404.35
440 Rentals				276,111.00
Total Purchased Property Services				\$2,964,131.29
500 Other Purchased Services				
521 Fire Insurance				5,339.07
523 General Property and Liability Insurance				434,146.68
529 Other Insurance				1,732.50
530 Communications				392,400.36
Total Other Purchased Services				\$833,618.61
600 Supplies				
610 General Supplies				193,934.10
620 Energy				206,054.99
Total Supplies				\$399,989.09
700 Property				
752 Capital Equipment - Original and Additional				447,193.89
762 Capitalized Equipment - Replacement				47,110.14
Total Property				\$51,964.44
Total 2620 Operation of Buildings Services	\$193,934.10	\$206,054.99	\$61,964.44	\$13,740,105.83

	Elementary	Secondary	Federal	Total
General Fund (10)				
2700 Student Transportation Services				
100 Personnel Services - Salaries				62,444.00
100 Personnel Services - Salaries				
Total Personnel Services - Salaries				\$62,444.00
200 Personnel Services - Employee Benefits				
210 Group Insurance - Contracted Provider				15,837.00
220 Social Security Contributions				4,624.00
230 PSERS Retirement Contributions				19,383.00
250 Unemployment Compensation				50.00
260 Workers' Compensation				199.00
Total Personnel Services - Employee Benefits				\$40,093.00
500 Other Purchased Services				
513 Contracted Carriers				4,030,368.00
516 Student Transportation Services From the IU				222,658.00
Total Other Purchased Services				\$4,253,026.00
Total 2700 Student Transportation Services				\$4,355,563.00

General Fund (10)

	Elementary	Secondary	Federal	Total
2710 Supervision of Student Transportation Services				
100 <u>Personnel Services - Salaries</u>				
100 Personnel Services - Salaries				
Total Personnel Services - Salaries				62,444.00
200 <u>Personnel Services - Employee Benefits</u>				\$62,444.00
210 Group Insurance - Contracted Provider				15,837.00
220 Social Security Contributions				4,624.00
230 PSERS Retirement Contributions				19,383.00
250 Unemployment Compensation				50.00
260 Workers' Compensation				199.00
Total Personnel Services - Employee Benefits				\$40,093.00
Total 2710 Supervision of Student Transportation Services				\$102,537.00

General Fund (10)

	Elementary	Secondary	Federal	Total
2711 Supervision of Student Transportation Services - Head of Component				
100 Personnel Services - Salaries				
100 Personnel Services - Salaries				
Total Personnel Services - Salaries				62,444.00
200 Personnel Services - Employee Benefits				
210 Group Insurance - Contracted Provider				15,837.00
220 Social Security Contributions				4,624.00
230 PSEERS Retirement Contributions				19,383.00
250 Unemployment Compensation				50.00
260 Workers' Compensation				199.00
Total Personnel Services - Employee Benefits				\$40,093.00
Total 2711 Supervision of Student Transportation Services - Head of Component				\$102,537.00

	Elementary	Secondary	Federal	Total
General Fund (10)				
2720 Vehicle Operation Services				
500 Other Purchased Services				
513 Contracted Carriers				
516 Student Transportation Services From the IU				
Total Other Purchased Services				3,529,236.00
Total 2720 Vehicle Operation Services				222,658.00
				\$3,751,894.00
				\$3,751,894.00

	Elementary	Secondary	Federal	Total
General Fund (10)				
2750 Nonpublic Transportation				
500 Other Purchased Services				
513 Contracted Carriers				
Total Other Purchased Services				496,859.00
Total 2750 Nonpublic Transportation				\$496,859.00
				\$496,859.00

General Fund (10)

Page - 51 of 61

	Elementary	Secondary	Federal	Total
2790 Other Student Transportation Services				
500 Other Purchased Services				
513 Contracted Carriers				
Total Other Purchased Services				4,273.00
Total 2790 Other Student Transportation Services				\$4,273.00
				\$4,273.00

	Elementary	Secondary	Federal	Total
General Fund (10)				
2800 Support Services - Central				
100 Personnel Services - Salaries				
100 Personnel Services - Salaries				
Total Personnel Services - Salaries				1,226,634.00
200 Personnel Services - Employee Benefits				\$1,226,634.00
210 Group Insurance - Contracted Provider				311,104.00
220 Social Security/Contributions				89,889.00
230 PSERS Retirement Contributions				352,804.00
250 Unemployment Compensation				993.00
260 Workers' Compensation				3,917.00
Total Personnel Services - Employee Benefits				\$758,707.00
300 Purchased Professional and Technical Services				
310 Official / Administrative Services				
Total Purchased Professional and Technical Services				373,675.00
500 Other Purchased Services				\$373,675.00
541 Advertising Related to Federal Grant Awards				1,909.00
Total Other Purchased Services				\$1,909.00
600 Supplies				
610 General Supplies				102,437.00
640 Books and Periodicals				271.00
Total Supplies				\$102,708.00
700 Property				
752 Capital Equipment - Original and Additional				106,328.00
762 Capitalized Equipment - Replacement				443,930.00
Total Property				\$550,258.00
800 Other Objects				
810 Dues and Fees				5,240.00
Total Other Objects				\$5,240.00
Total 2800 Support Services - Central				\$3,019,131.00

	Elementary	Secondary	Federal	Total
General Fund (10)				
2820 Information Services				
100 Personnel Services - Salaries				
100 Personnel Services - Salaries				
Total Personnel Services - Salaries				89,075.87
200 Personnel Services - Employee Benefits				\$89,075.87
210 Group Insurance - Contracted Provider				20,745.00
220 Social Security/Contributions				6,670.91
230 PSERS Retirement Contributions				26,749.56
Total Personnel Services - Employee Benefits				\$54,165.47
Total 2820 Information Services				\$143,241.34

	<u>Elementary</u>	<u>Secondary</u>	<u>Federal</u>	<u>Total</u>
General Fund (10)				
2821 Supervision of Information Services				
100 <u>Personnel Services - Salaries</u>				
100 <u>Personnel Services - Salaries</u>				89,076.87
Total Personnel Services - Salaries				\$89,076.87
200 <u>Personnel Services - Employee Benefits</u>				
210 <u>Group Insurance - Contracted Provider</u>				20,745.00
220 <u>Social Security Contributions</u>				6,670.91
230 <u>PSEERS Retirement Contributions</u>				26,749.56
Total Personnel Services - Employee Benefits				\$54,165.47
Total 2821 Supervision of Information Services				\$143,241.34

	Elementary	Secondary	Federal	Total
General Fund (10)				
2830 Staff Services				
100 Personnel Services - Salaries				
100 Personnel Services - Salaries				244,825.00
Total Personnel Services - Salaries				\$244,825.00
200 Personnel Services - Employee Benefits				
210 Group Insurance - Contracted Provider				64,663.00
220 Social Security Contributions				17,945.00
230 PSERS Retirement Contributions				76,243.00
250 Unemployment Compensation				182.00
260 Workers' Compensation				802.00
Total Personnel Services - Employee Benefits				\$159,835.00
300 Purchased Professional and Technical Services				
310 Official / Administrative Services				6,817.00
Total Purchased Professional and Technical Services				\$6,817.00
500 Other Purchased Services				
541 Advertising Related to Federal Grant Awards				1,909.00
Total Other Purchased Services				\$1,909.00
600 Supplies				
610 General Supplies				1,064.00
640 Books and Periodicals				271.00
Total Supplies				\$1,335.00
800 Other Objects				
810 Dues and Fees				5,240.00
Total Other Objects				\$5,240.00
Total 2830 Staff Services				\$419,961.00

	Elementary	Secondary	Federal	Total
General Fund (10)				
2831 Supervision of Staff Services				
100 Personnel Services - Salaries				87,184.00
100 Personnel Services - Salaries				\$87,184.00
200 Personnel Services - Employee Benefits				
210 Group Insurance - Contracted Provider				23,424.00
220 Social Security Contributions				6,479.00
230 PSEERS Retirement Contributions				27,157.00
250 Unemployment Compensation				73.00
260 Workers' Compensation				381.00
Total Personnel Services - Employee Benefits				
				\$57,514.00
300 Purchased Professional and Technical Services				
310 Official / Administrative Services				68.17
Total Purchased Professional and Technical Services				
				\$68.17
500 Other Purchased Services				
541 Advertising Related to Federal Grant Awards				20.20
Total Other Purchased Services				
				\$20.20
600 Supplies				
610 General Supplies				64.00
Total Supplies				
				\$64.00
Total 2831 Supervision of Staff Services				
				\$144,850.37

	Elementary	Secondary	Federal	Total
General Fund (10)				
2832 Recruitment and Placement Services				
100 Personnel Services - Salaries				
100 Personnel Services - Salaries				157,641.00
Total Personnel Services - Salaries				\$157,641.00
200 Personnel Services - Employee Benefits				
210 Group Insurance - Contracted Provider				41,239.00
220 Social Security Contributions				11,466.00
230 PSERS Retirement Contributions				49,086.00
250 Unemployment Compensation				109.00
260 Workers' Compensation				421.00
Total Personnel Services - Employee Benefits				\$102,321.00
300 Purchased Professional and Technical Services				
310 Official / Administrative Services				
Total Purchased Professional and Technical Services				6,748.83
500 Other Purchased Services				
541 Advertising Related to Federal Grant Awards				\$6,748.83
Total Other Purchased Services				1,888.80
600 Supplies				
610 General Supplies				1,000.00
640 Books and Periodicals				271.00
Total Supplies				\$1,271.00
800 Other Objects				
810 Dues and Fees				5,240.00
Total Other Objects				\$5,240.00
Total 2832 Recruitment and Placement Services				\$275,110.63

	Elementary	Secondary	Federal	Total
General Fund (10)				
2840 Data Processing Services				
100 Personnel Services - Salaries				
100 Personnel Services - Salaries				756,452.13
Total Personnel Services - Salaries				\$756,452.13
200 Personnel Services - Employee Benefits				
210 Group Insurance - Contracted Provider				182,722.00
220 Social Security/Contributions				55,121.09
230 PSERS Retirement Contributions				207,509.44
250 Unemployment Compensation				685.00
260 Workers' Compensation				2,050.00
Total Personnel Services - Employee Benefits				\$448,087.53
300 Purchased Professional and Technical Services				
310 Official / Administrative Services				366,858.00
Total Purchased Professional and Technical Services				\$366,858.00
600 Supplies				
610 General Supplies				101,373.00
Total Supplies				\$101,373.00
700 Property				
752 Capital Equipment - Original and Additional				106,328.00
762 Capitalized Equipment - Replacement				443,930.00
Total Property				\$550,258.00
Total 2840 Data Processing Services				\$2,223,028.66

	Elementary	Secondary	Federal	Total
General Fund (10)				
2850 State and Federal Agency Liaison Services				
100 Personnel Services - Salaries				
100 Personnel Services - Salaries				
Total Personnel Services - Salaries				
200 Personnel Services - Employee Benefits				136,281.00
210 Group Insurance - Contracted Provider				42,974.00
220 Social Security Contributions				10,152.00
230 PSERS Retirement Contributions				42,302.00
250 Unemployment Compensation				126.00
260 Workers' Compensation				1,065.00
Total Personnel Services - Employee Benefits				
Total 2850 State and Federal Agency Liaison Services				
				\$96,619.00
				\$232,900.00

General Fund (10)

2900 Other Support Services

500 Other Purchased Services

595 IU Payments By Withholding

Total Other Purchased Services

Total 2900 Other Support Services

	Elementary	Secondary	Federal	Total
				107,090.20
				\$107,090.20
				\$107,090.20

	<u>Elementary</u>	<u>Secondary</u>	<u>Federal</u>	<u>Total</u>
General Fund (10)				
2910 Support Services Not Listed Elsewhere In the 2000 Series				
500 Other Purchased Services				
595 IU Payments By Withholding				107,090.20
Total Other Purchased Services				\$107,090.20
Total 2910 Support Services Not Listed Elsewhere In the 2000 Series				\$107,090.20

General Fund (10)		
3000 Operation of Non-Instructional Services		
100 Personnel Services - Salaries		
100 Personnel Services - Salaries		
Total Personnel Services - Salaries		<u>730,167.60</u>
200 Personnel Services - Employee Benefits		
210 Group Insurance - Contracted Provider		
220 Social Security Contributions		
230 PSERS Retirement Contributions		185,188.29
250 Unemployment Compensation		55,663.00
260 Workers' Compensation		152,309.01
		611.14
Total Personnel Services - Employee Benefits		<u>2,331.83</u>
500 Other Purchased Services		
510 Student Transportation Services		
580 Travel		
Total Other Purchased Services		<u>270,357.00</u>
600 Supplies		
610 General Supplies		
Total Supplies		<u>58,658.00</u>
700 Property		
752 Capital Equipment - Original and Additional		
762 Capitalized Equipment - Replacement		
Total Property		<u>16,033.00</u>
800 Other Objects		
810 Dues and Fees		
Total Other Objects		<u>50,483.00</u>
Total 3000 Operation of Non-Instructional Services		<u>\$1,595,037.87</u>

	Elementary	Secondary	Federal	Total
General Fund (10)				
3200 Student Activities				
100 <u>Personnel Services - Salaries</u>				
100 Personnel Services - Salaries				
Total Personnel Services - Salaries				
200 Personnel Services - Employee Benefits				
210 Group Insurance - Contracted Provider				
220 Social Security Contributions				
230 PSERS Retirement Contributions				
250 Unemployment Compensation				
260 Workers' Compensation				
Total Personnel Services - Employee Benefits				
500 Other Purchased Services				
510 Student Transportation Services				
580 Travel				
Total Other Purchased Services				
600 Supplies				
610 General Supplies				
Total Supplies				
700 Property				
752 Capital Equipment - Original and Additional				
762 Capitalized Equipment - Replacement				
Total Property				
800 Other Objects				
810 Dues and Fees				
Total Other Objects				
Total 3200 Student Activities				

50,483.00
 \$50,483.00
 \$1,370,153.00

	Elementary	Secondary	Federal	Total
General Fund (10)				
3300 Community Services				
100 Personnel Services - Salaries				
100 Personnel Services - Salaries				142,420.60
Total Personnel Services - Salaries				\$142,420.60
200 Personnel Services - Employee Benefits				
210 Group Insurance - Contracted Provider				36,121.29
220 Social Security Contributions				10,859.00
230 PSERS Retirement Contributions				4,314.01
250 Unemployment Compensation				115.14
260 Workers' Compensation				454.83
Total Personnel Services - Employee Benefits				\$51,864.27
600 Supplies				
610 General Supplies				30,600.00
Total Supplies				\$30,600.00
Total 3300 Community Services				\$224,884.87

General Fund (10) Page - 1 of 6

5000 Other Expenditures and Financing Uses

800 Other Objects

830 Interest

Total Other Objects

900 Other Uses of Funds

910 Redemption of Principal

930 Fund Transfers

Total Other Uses of Funds

Total 5000 Other Expenditures and Financing Uses

	Total
830 Interest	3,491,846.00
Total Other Objects	3,491,846.00
910 Redemption of Principal	1,146,418.00
930 Fund Transfers	7,096,418.00
Total Other Uses of Funds	8,242,836.00
Total 5000 Other Expenditures and Financing Uses	\$10,588,264.00

General Fund (10) Page - 2 of 6

5100 Debt Service / Other Expenditures and Financing Uses

	Elementary	Secondary	Federal	Total
--	------------	-----------	---------	-------

800 Other Objects				
830 Interest				
Total Other Objects				3,491,846.00

900 Other Uses of Funds				\$3,491,846.00
910 Redemption of Principal				
Total Other Uses of Funds				5,950,000.00

Total 5100 Debt Service / Other Expenditures and Financing Uses				\$9,441,846.00
--	--	--	--	-----------------------

	Elementary	Secondary	Federal	Total
General Fund (10)				
5110 Debt Service				
800 Other Objects				
830 Interest				
Total Other Objects				3,491,846.00
900 Other Uses of Funds				
910 Redemption of Principal				\$3,491,846.00
Total Other Uses of Funds				5,950,000.00
Total 5110 Debt Service				\$9,441,846.00

	Elementary	Secondary	Federal	Total
General Fund (10)				
5200 Interfund Transfers - Out				
900 Other Uses of Funds				
930 Fund Transfers				
Total Other Uses of Funds				1,146,418.00
Total 5200 Interfund Transfers - Out				\$1,146,418.00
				\$1,146,418.00

General Fund (10)

	Elementary	Secondary	Federal	Total
5240 Debt Service Fund Transfers				
900 Other Uses of Funds				
930 Fund Transfers				
Total Other Uses of Funds				26,400.00
Total 5240 Debt Service Fund Transfers				\$26,400.00
				\$26,400.00

	Elementary	Secondary	Federal	Total
General Fund (10)				
5260 Internal Service Fund Transfers				
900 Other Uses of Funds				
930 Fund Transfers				
Total Other Uses of Funds				1,120,018.00
Total 5260 Internal Service Fund Transfers				\$1,120,018.00
				\$1,120,018.00

Other Capital Projects Fund (39)	
1000 Instruction	
800 Other Objects	
890 Miscellaneous Expenditures	
Total Other Objects	301,389.00
Total 1000 Instruction	\$301,389.00
	\$301,389.00

	Elementary	Secondary	Federal	Total
Other Capital Projects Fund (39)				
1100 Regular Programs – Elementary / Secondary				
800 Other Objects				
890 Miscellaneous Expenditures	301,389.00			301,389.00
Total Other Objects	\$301,389.00			\$301,389.00
Total 1100 Regular Programs – Elementary / Secondary	\$301,389.00			\$301,389.00

	Elementary	Secondary	Federal	Total
Other Capital Projects Fund (39)				
1110 Regular Programs				
800 Other Objects				
890 Miscellaneous Expenditures	301,389.00			301,389.00
Total Other Objects	\$301,389.00			\$301,389.00
Total 1110 Regular Programs	\$301,389.00			\$301,389.00

Other Capital Projects Fund (39)	
3000 Operation of Non-Instructional Services	
800 Other Objects	
890 Miscellaneous Expenditures	
Total Other Objects	497,796.00
Total 3000 Operation of Non-Instructional Services	\$497,796.00
	<u>Total</u>
	\$497,796.00

	Elementary	Secondary	Federal	Total
Other Capital Projects Fund (39)				
3200 Student Activities				
800 Other Objects				
890 Miscellaneous Expenditures				497,796.00
Total Other Objects				\$497,796.00
Total 3200 Student Activities				\$497,796.00

Other Capital Projects Fund (39)	
4000 Facilities Acquisition, Construction and Improvement Services	
400 Purchased Property Services	
450 Construction Services	
Total Purchased Property Services	1,121,438.00
Total 4000 Facilities Acquisition, Construction and Improvement Services	\$1,121,438.00
	<u>Total</u>
	\$1,121,438.00

	Elementary	Secondary	Federal	Total
Other Capital Projects Fund (39)				
4100 Site Acquisition Services - Original and Additional				
400 Purchased Property Services				
450 Construction Services				
Total Purchased Property Services				1,121,438.00
Total 4100 Site Acquisition Services - Original and Additional				\$1,121,438.00
				\$1,121,438.00

Other Capital Projects Fund (39)

5000 Other Expenditures and Financing Uses

800 Other Objects

830 Interest

Total Other Objects

Total 5000 Other Expenditures and Financing Uses

13,356.00
\$13,356.00
\$13,356.00

	Elementary	Secondary	Federal	Total
Other Capital Projects Fund (39)				
5100 Debt Service / Other Expenditures and Financing Uses				
800 Other Objects				
830 Interest				13,356.00
Total Other Objects				\$13,356.00
Total 5100 Debt Service / Other Expenditures and Financing Uses				\$13,356.00

	Elementary	Secondary	Federal	Total
Other Capital Projects Fund (39)				
5110 Debt Service				
800 Other Objects				
830 Interest				
Total Other Objects				13,356.00
Total 5110 Debt Service				\$13,356.00
				\$13,356.00

Debt Service Fund (40)

3000 Operation of Non-Instructional Services

300 Purchased Professional and Technical Services

330 Other Professional Services

Total Purchased Professional and Technical Services

Total 3000 Operation of Non-Instructional Services

	Total
2,800.00	
\$2,800.00	
\$2,800.00	

	Elementary	Secondary	Federal	Total
Debt Service Fund (40)				
3300 Community Services				
300 Purchased Professional and Technical Services				
330 Other Professional Services				
Total Purchased Professional and Technical Services				2,800.00
Total 3300 Community Services				\$2,800.00
				\$2,800.00

Debt Service Fund (40) Page - 1 of 7

5000 Other Expenditures and Financing Uses

800 Other Objects Total

830 Interest 5,904,171.00

Total Other Objects 5,904,171.00

900 Other Uses of Funds \$5,904,171.00

910 Redemption of Principal 79,315,000.00

939 Other Fund Transfers 12,605,768.00

990 Miscellaneous Other Uses of Funds 1,809,223.00

Total Other Uses of Funds \$93,729,991.00

Total 5000 Other Expenditures and Financing Uses \$99,634,162.00

	Elementary	Secondary	Federal	Total
Debt Service Fund (40)				
5100 Debt Service / Other Expenditures and Financing Uses				
800 Other Objects				
830 Interest				5,904,171.00
Total Other Objects				\$5,904,171.00
900 Other Uses of Funds				
910 Redemption of Principal				79,315,000.00
990 Miscellaneous Other Uses of Funds				1,809,223.00
Total Other Uses of Funds				\$81,124,223.00
Total 5100 Debt Service / Other Expenditures and Financing Uses				\$87,028,394.00

	Elementary	Secondary	Federal	Total
Debt Service Fund (40)				
5110 Debt Service				
800 Other Objects				
830 Interest				
Total Other Objects				5,904,171.00
900 Other Uses of Funds				
910 Redemption of Principal				3,715,000.00
Total Other Uses of Funds				\$3,715,000.00
Total 5110 Debt Service				\$9,619,171.00

	Elementary	Secondary	Federal	Total
Debt Service Fund (40)				
5120 Debt Service - Refunded Bonds				
900 Other Uses of Funds				
910 Redemption of Principal				75,600,000.00
Total Other Uses of Funds				\$75,600,000.00
Total 5120 Debt Service - Refunded Bonds				\$75,600,000.00

	<u>Elementary</u>	<u>Secondary</u>	<u>Federal</u>	<u>Total</u>
Debt Service Fund (40)				
5150 Bond Discounts				
900 Other Uses of Funds				
990 Miscellaneous Other Uses of Funds				
Total Other Uses of Funds				1,809,223.00
Total 5150 Bond Discounts				\$1,809,223.00
				\$1,809,223.00

	Elementary	Secondary	Federal	Total
Debt Service Fund (40)				
5200 Interfund Transfers - Out				
900 Other Uses of Funds				
939 Other Fund Transfers				12,605,768.00
Total Other Uses of Funds				\$ 12,605,768.00
Total 5200 Interfund Transfers - Out				\$ 12,605,768.00

	Elementary	Secondary	Federal	Total
Debt Service Fund (40)				
5230 Capital Projects Fund Transfers				
900 Other Uses of Funds				
939 Other Fund Transfers				
Total Other Uses of Funds				12,605,768.00
Total 5230 Capital Projects Fund Transfers				\$12,605,768.00
				\$12,605,768.00

	General Fund(10)	Public Purpose Trust(27)	Other Compt Approved (28)	Athletic /Activity(29)	Capital Reserve (690, 1850)(31)
1000 Instruction					
1100 Regular Programs - Elementary / Secondary	73,251,993.86				
1200 Special Programs - Elementary / Secondary	23,654,813.73				
1300 Vocational Education	1,829,388.16				
1400 Other Instructional Programs - Elementary / Secondary	518,685.22				
1500 Nonpublic School Programs	980.00				
1600 Adult Education Programs	5,438.39				
1800 Pre-Kindergarten	2,310,422.09				
Total Instruction	\$101,571,721.45				
2000 Support Services					
2100 Support Services - Students	5,352,375.49				
2200 Support Services - Instructional Staff	2,931,766.14				
2300 Support Services - Administration	8,544,440.39				
2400 Support Services - Pupil Health	2,132,697.00				
2500 Support Services - Business	1,172,490.33				
2600 Operation and Maintenance of Plant Services	14,180,179.38				
2700 Student Transportation Services	4,355,563.00				
2800 Support Services - Central	3,019,131.00				
2900 Other Support Services	107,090.20				
Total Support Services	\$41,795,732.93				
3000 Operation of Non-Instructional Services					
3200 Student Activities	1,370,153.00				
3300 Community Services	224,884.87				
Total Operation of Non-Instructional Services	\$1,595,037.87				
4000 Facilities Acquisition, Construction and Improvement Services					
4100 Site Acquisition Services - Original and Additional					
Total Facilities Acquisition, Construction and Improvement					
5000 Other Expenditures and Financing Uses					
5100 Debt Service / Other Expenditures and Financing Uses	9,441,846.00				
5200 Interfund Transfers - Out	1,146,418.00				
Total Other Expenditures and Financing Uses	\$10,588,264.00				
TOTAL ACTUAL EXPENDITURES & OTHER FINANCING USES	\$155,550,756.25				

	Capital Reserve (143)(32)	Other Capital Projects Fund(39)	Debt Service(40)	Permanent(90)	Total
1000 Instruction					
1100 Regular Programs - Elementary / Secondary					73,553,382.86
1200 Special Programs - Elementary / Secondary		301,389.00			23,654,813.73
1300 Vocational Education					1,829,388.16
1400 Other Instructional Programs - Elementary / Secondary					518,685.22
1500 Nonpublic School Programs					980.00
1600 Adult Education Programs					5,438.39
1800 Pre-Kindergarten					2,310,422.09
Total Instruction					\$101,873,110.45
2000 Support Services					
2100 Support Services - Students	\$301,389.00				5,352,375.49
2200 Support Services - Instructional Staff					2,931,786.14
2300 Support Services - Administration					8,544,440.39
2400 Support Services - Pupil Health					2,132,697.00
2500 Support Services - Business					1,172,490.33
2600 Operation and Maintenance of Plant Services					14,180,179.38
2700 Student Transportation Services					4,355,563.00
2800 Support Services - Central					3,019,131.00
2900 Other Support Services					107,090.20
Total Support Services					\$41,795,732.93
3000 Operation of Non-Instructional Services					
3200 Student Activities					1,867,949.00
3300 Community Services	497,796.00				227,684.87
Total Operation of Non-Instructional Services					\$2,095,633.87
4000 Facilities Acquisition, Construction and Improvement Services					
4100 Site Acquisition Services - Original and Additional	\$497,796.00		\$2,800.00		1,121,438.00
Total Facilities Acquisition, Construction and Improvement					\$1,121,438.00
5000 Other Expenditures and Financing Uses					
5100 Debt Service / Other Expenditures and Financing Uses		13,356.00	87,028,394.00		96,483,596.00
5200 Interfund Transfers - Out			12,605,768.00		13,752,186.00
Total Other Expenditures and Financing Uses					\$110,235,782.00
TOTAL ACTUAL EXPENDITURES & OTHER FINANCING USES					\$257,121,697.25

PSERS Salary Data (Salary Data should relate to the General Fund only)

Amount Description	Amount
Total Salary Base for salaries subject to PSERS withholding	70,998,061.98
Total Federally Funded salaries subject to PSERS withholding	4,828,003.87

Title I Expenditure Data

Amount Description	Amount
Expenditures Funded with Current Title I Funds	4,299,551.74
Expenditures Funded with Carry over Title I Funds	
Total Title I Expenditure Data	\$4,299,551.74

Title I ARRA Amount

Amount Description	Amount
Portion of Total Title I Expenditures funded with ARRA Title I	

Benefits for Staff Relative to Collective Bargaining Agreements

FUND	SUBJECT	Benefits for Staff Relative to Collective Bargaining Agreements		TOTAL
		COVERED	NOT COVERED	
10 General Fund	No Self Insurance data to report			
	211 Medical Insurance	19,081,107.16	880,297.29	19,961,404.45
	212 Dental Insurance			
	215 Eye Care Insurance			
	216 Prescription Insurance			
	271 Self-Insurance Medical Benefits			
	272 Self-Insurance Dental Benefits			
	275 Self-Insurance Eye Care Benefits			
	276 Self-Insurance Prescription Benefits			
	FUND TOTAL			
50 Enterprise Fund	No Self Insurance data to report			
	211 Medical Insurance			
	212 Dental Insurance			
	215 Eye Care Insurance			
	216 Prescription Insurance			
	271 Self-Insurance Medical Benefits			
	272 Self-Insurance Dental Benefits			
	275 Self-Insurance Eye Care Benefits			
	276 Self-Insurance Prescription Benefits			
	FUND TOTAL			
60 Internal Service Fund	No Self Insurance data to report			
	211 Medical Insurance			
	212 Dental Insurance			
	215 Eye Care Insurance			
	216 Prescription Insurance			
	271 Self-Insurance Medical Benefits			
	272 Self-Insurance Dental Benefits			
	275 Self-Insurance Eye Care Benefits			
	276 Self-Insurance Prescription Benefits			
	FUND TOTAL			
Total of All Funds		\$19,081,107.16	\$880,297.29	\$19,961,404.45

Function

Page - 1 of 1

Function	Special Education (Prior Year)	Nonspecial Education (Prior Year)	Total (Prior Year)	Special Education (Current Year)	Nonspecial Education (Current Year)	Total (Current Year)
2120 Guidance Services	233,199.39	1,326,662.77	1,559,862.16	399,956.97	1,883,952.84	2,283,909.81
2140 Psychological Services	85,383.27	485,742.31	571,125.58	87,745.62	413,371.58	501,117.20
2150 Speech Pathology and Audiology Services	12,024.73	68,408.27	80,433.00	169,925.95	800,417.31	970,343.26
2160 Social Work Services	38,168.79	217,140.84	255,309.63	51,407.01	242,146.99	293,554.00
2260 Instruction and Curriculum Development Services	122,974.70	434,078.16	557,052.86	155,043.07	453,300.31	608,343.38
2350 Legal and Accounting Services	38,370.33	299,004.75	337,375.08	44,501.72	320,280.28	364,782.00
2420 Medical Services	71,655.99	407,648.32	479,304.31	130,956.06	616,936.94	747,893.00
2440 Nursing Services	199,518.45	1,135,053.17	1,334,571.62	242,052.87	1,140,163.13	1,382,216.00
2700 Student Transportation Services	2,203,972.61	2,535,537.23	4,739,509.84	2,045,950.30	2,309,612.70	4,355,563.00
Total	\$3,005,268.26	\$6,909,275.82	\$9,914,544.08	\$3,327,539.57	\$8,180,182.08	\$11,507,721.65

GOVERNMENTAL FUNDS/ACTIVITIES

(PRINCIPAL AMOUNTS ONLY)

	Short-Term Borrowing	General Obligation Bonds/Notes	Authority Building Obligations	Other Long-Term Debt	Other Post-Employment Benefits (OPEB)	Compensated Absences	Net Pension Liability	Total
1. Debt at Beginning of Fiscal Year	19,473,410.00	186,235,000.00			8,047,500.00	18,121,659.00	227,189,000.00	459,066,569.00
2. Additional Debt Incurred During Year	19,000,000.00	98,885,000.00			245,000.00		36,255,000.00	154,385,000.00
3. Retirements and Repayments		19,288,032.00						
4. Debt at End of Fiscal Year	19,185,378.00	199,855,000.00			2,100,000.00	299,094.00	263,444,000.00	106,952,126.00
5. Accreted Interest at End Of Fiscal Year					6,192,500.00	17,822,565.00		506,499,443.00
6. Total Debt and Accreted Interest	19,185,378.00	199,855,000.00			6,192,500.00	17,822,565.00	263,444,000.00	506,499,443.00
7. Current Portion P&I - Due within 1 year	19,061,925.00	17,050,817.00						36,112,742.00
8. Interest Paid during current fiscal year	468,717.00	8,940,656.00						9,409,373.00

(PRINCIPAL AMOUNTS ONLY)

- PROPRIETARY FUNDS**
1. Debt at Beginning of Fiscal Year
 2. Additional Debt Incurred During Year
 3. Retirements and Repayments
 4. Debt at End of Fiscal Year
 5. Accreted Interest at End Of Fiscal Year
 6. Total Debt and Accreted Interest
 7. Current Portion P&I - Due within 1 year
 8. Interest Paid during current fiscal year

Debt Details
Governmental Funds/ Activities

Debt Category	Debt Issue Date (MM/YYYY)	Debt at Beginning of Fiscal Year	Principal Amounts Only			Debt at End of Fiscal Year	Current Portion Due Within One Year (Principal and Interest)	Interest Paid During Fiscal Year
			Additions	Reductions / Repayments				
Other Short Term Debt	01/2017	19,000,000.00	19,000,000.00	19,000,000.00	19,000,000.00	19,000,000.00	455,361.00	
General Obligation Bonds/Notes - CIB	03/2017	473,410.00	29,105,000.00	288,032.00	185,378.00	61,925.00	13,356.00	
General Obligation Bonds/Notes - CIB	03/2017		7,510,000.00	665,000.00	26,540,000.00	4,069,300.00	237,021.00	
General Obligation Bonds/Notes - CIB	03/2017		2,675,000.00	5,000.00	6,845,000.00	1,050,100.00	61,147.00	
General Obligation Bonds/Notes - CIB	03/2017		21,795,000.00	10,000.00	2,670,000.00	119,850.00	19,797.00	
General Obligation Bonds/Notes - CIB	12/2016		30,045,000.00	30,045,000.00	21,785,000.00	935,100.00	159,357.00	
General Obligation Bonds/Notes - CIB	12/2016		7,755,000.00	7,755,000.00			469,453.00	
General Obligation Bonds/Notes - CIB	03/2016	5,625,000.00			5,625,000.00	237,031.00	121,172.00	
General Obligation Bonds/Notes - CIB	03/2016	2,830,000.00			2,830,000.00	116,738.00	280,371.00	
General Obligation Bonds/Notes - CIB	12/2015	32,170,000.00		32,170,000.00			141,058.00	
General Obligation Bonds/Notes - CIB	12/2015	8,335,000.00		8,335,000.00			643,400.00	
General Obligation Bonds/Notes - CIB	02/2015	6,315,000.00		505,000.00	5,810,000.00	823,241.00	166,700.00	
General Obligation Bonds/Notes - CIB	02/2015	14,555,000.00		715,000.00	13,840,000.00	1,488,406.00	203,341.00	
General Obligation Bonds/Notes - CIB	12/2014	31,005,000.00		210,000.00	30,795,000.00	1,800,016.00	499,857.00	
General Obligation Bonds/Notes - CIB	03/2014	2,600,000.00		1,280,000.00	1,320,000.00	1,372,800.00	1,793,245.00	
General Obligation Bonds/Notes - CIB	04/2014	22,680,000.00		320,000.00	22,360,000.00	1,348,869.00	91,200.00	
General Obligation Bonds/Notes - CIB	04/2014	1,345,000.00		655,000.00	690,000.00	723,031.00	1,043,469.00	
General Obligation Bonds/Notes - CIB	12/2007	26,930,000.00		15,000.00	26,915,000.00	1,360,293.00	72,563.00	
General Obligation Bonds/Notes - CIB	12/2007	11,565,000.00		5,000.00	11,560,000.00	582,847.00	1,345,878.00	
General Obligation Bonds/Notes - CIB	12/2007	20,280,000.00		10,000.00	20,270,000.00	1,023,195.00	578,042.00	
Compensated Absences	12/2007	18,121,659.00		299,094.00	17,822,565.00		1,013,585.00	
Other Post-Employment Benefits (OPEB)		8,047,500.00		245,000.00	6,192,500.00			
Net Pension Liability		227,189,000.00		36,255,000.00	263,444,000.00			
Totals for Debt Entered:		\$459,066,569.00	\$154,385,000.00	\$106,952,126.00	\$506,499,443.00	\$36,112,742.00	\$9,409,373.00	

General Fund (10)

Section 1: Tuition/Purchased Services as Reported within Expenditure Detail
 Tuition Reported in General Fund Expenditures 1000-560
 Purchased Services in General Fund Expenditures 1000-594 and 1000-597

Section 1 Total

Amount
 8,743,082.83
 32,075.15
\$8,775,157.98

Section 2: Tuition Paid to Institution Types During Fiscal Year

	Tuition Paid For Nonspecial Education	Tuition Paid For Special Education	Total
1 1306 Institutions			
2 Institutionalized Children's Programs			
3 Juveniles Incarcerated in Adult Facilities			
4 Residential Treatment Facilities			
5 Other Local Education Agencies			
6 Brick and Mortar Charter Schools	15,960.00	356,373.00	372,333.00
7 Cyber Charter Schools	48,312.39	344,645.05	392,957.44
8 Career and Technology Centers	1,587,958.43	519,858.14	2,107,816.57
9 Approved Private Schools	2,022,141.56	1,232,974.02	3,255,115.58
10 PA Chartered Schools for the Deaf and Blind	1,819,696.00		1,819,696.00
11 Private Residential Rehabilitative Institutions	56,955.00	515,547.94	572,502.94
12 Juvenile Detention Centers		89,943.00	89,943.00
13 Special Program Jointures		82,241.27	82,241.27
14 Other Tuition Not Included Elsewhere In This Section	840.00	28,377.14	29,217.14
Section 2 Total	4,286.58	49,048.46	53,335.04
	\$5,556,149.96	\$3,219,008.02	\$8,775,157.98

Food Service / Cafeteria Operations Fund (51)		
3000 Operation of Non-Instructional Services		
100 Personnel Services - Salaries		
100 Personnel Services - Salaries		
Total Personnel Services - Salaries		Total
200 Personnel Services - Employee Benefits	147,827.00	
210 Group Insurance - Contracted Provider		
220 Social Security Contributions		
230 PSEERS Retirement Contributions		
Total Personnel Services - Employee Benefits	\$147,827.00	
500 Other Purchased Services	7,654.00	
570 Food Service Management	11,309.00	
Total Other Purchased Services	44,392.00	
700 Property	63,355.00	
740 Depreciation	5,485,607.00	
Total Property	\$5,485,607.00	
Total 3000 Operation of Non-Instructional Services	66,905.00	
	\$66,905.00	
	\$5,763,694.00	

Food Service / Cafeteria Operations Fund (51)
 3100 Food Services

	Elementary	Secondary	Federal	Total
100 Personnel Services - Salaries				
100 Personnel Services - Salaries				
Total Personnel Services - Salaries				
200 Personnel Services - Employee Benefits				
210 Group Insurance - Contracted Provider				147,827.00
220 Social Security Contributions				\$147,827.00
230 PSERS Retirement Contributions				
Total Personnel Services - Employee Benefits				7,654.00
500 Other Purchased Services				
570 Food Service Management				11,309.00
Total Other Purchased Services				44,392.00
700 Property				
740 Deprecation				5,485,607.00
Total Property				\$5,485,607.00
Total 3100 Food Services				66,905.00
				\$66,905.00
				\$5,753,694.00

	Food Service(51)	Child Care Operations(52)	Other Enterprise(58)	Internal Service(60)	Total
3000 Operation of Non-Instructional Services					
3100 Food Services	5,763,694.00				5,763,694.00
Total Operation of Non-Instructional Services	\$5,763,694.00				\$5,763,694.00
TOTAL ACTUAL EXPENDITURES & OTHER FINANCING USES	\$5,763,694.00				\$5,763,694.00