



NOTRE DAME LOWER SCHOOL  
NOTRE DAME MIDDLE SCHOOL  
VIEWBOOK

grow...







**YOU WANT MORE.** You want a school where your child will learn, grow, have fun and be loved. You want a community whose mission is to develop Christians, citizens and scholars who will make our world a better place. Notre Dame offers a world-class educational experience where academic excellence flourishes and all students are encouraged to be their best selves. Now is the time to go where you belong.



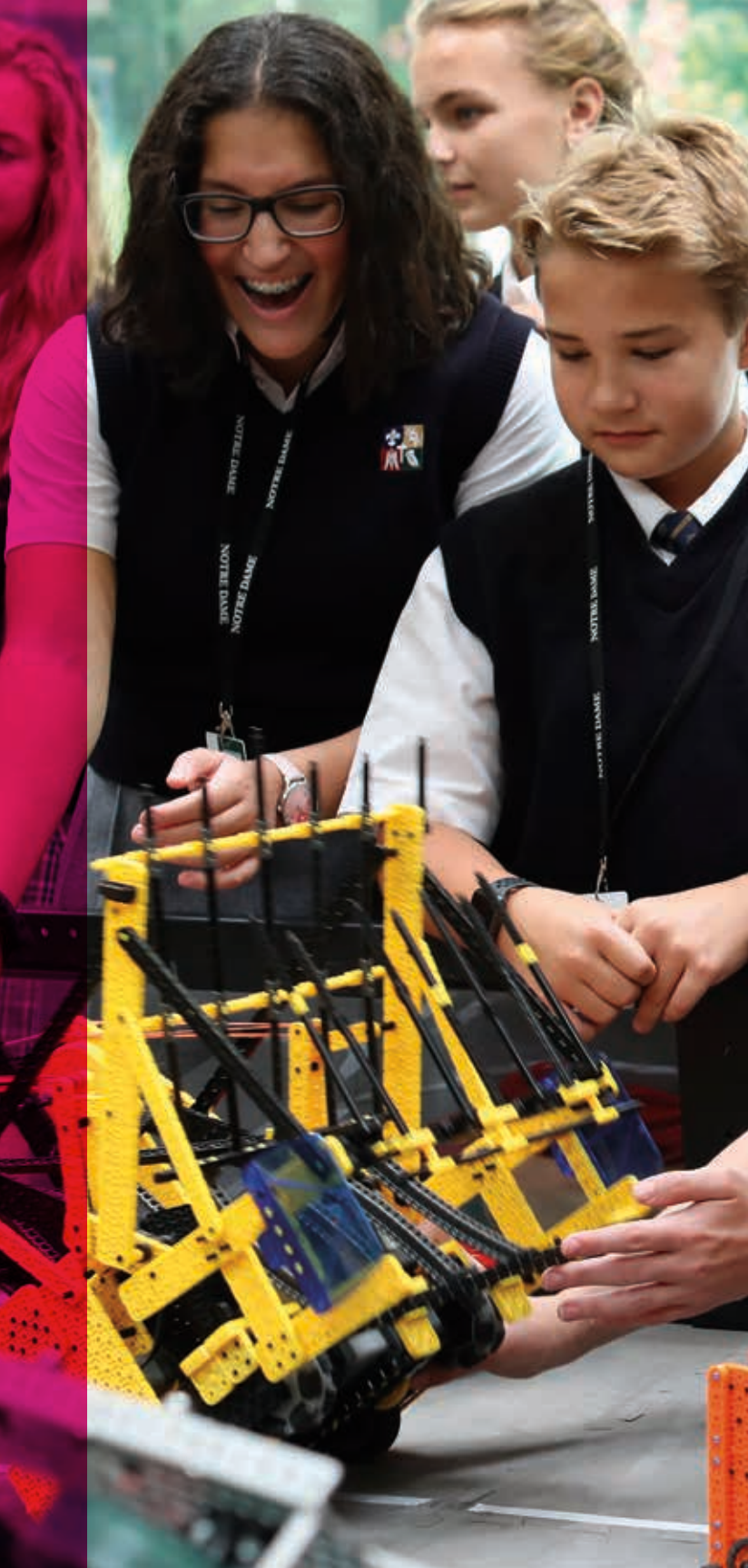
*“The kids are very smart and talented at Notre Dame. I always have a difficult decision in choosing what show to do because I always want to challenge them.”*

— MEREDITH (THEATRE DIRECTOR)

# *be creative*

**PAINT! SING! PLAY! PERFORM!** At Notre Dame, students excel as artists, singers, musicians, actors, inventors and explorers. They express themselves and develop new talents. In this creative community, *your child belongs.*





## IMMERSIVE LEARNING THROUGH ROBOTICS

There's no greater reward for you as a parent than watching the light bulb go off in your child's head. At Notre Dame, we take mastery of academic principles as well as life skills such as team-working and problem-solving out of the classroom and immerse students in a hands-on learning approach. Through our after-school robotics program, students are exposed to fun and exciting ways of mastering concepts like math, science and computer coding in a team-based learning environment. Learn more about our K-12 robotics program at [www.ndpma.org](http://www.ndpma.org).



## APPLYING CRITICAL THINKING TO REAL-WORLD ISSUES

Have you ever sought a window into your child's mind, especially when it comes to complex issues today? At Notre Dame, we encourage students to actively explore life's questions and solutions, creating well-balanced children who are prepared for the future. The apex of the International Baccalaureate journey at the lower level is the fifth-grade exhibition and eighth grade community project, both of which are designed to give students a platform to showcase their ability to problem-solve. Understanding your place in the broader community and how to affect positive change also is a focal point through student-led community service. Learn more about the IB program and Notre Dame's approach to learning at [www.ndpma.org](http://www.ndpma.org).



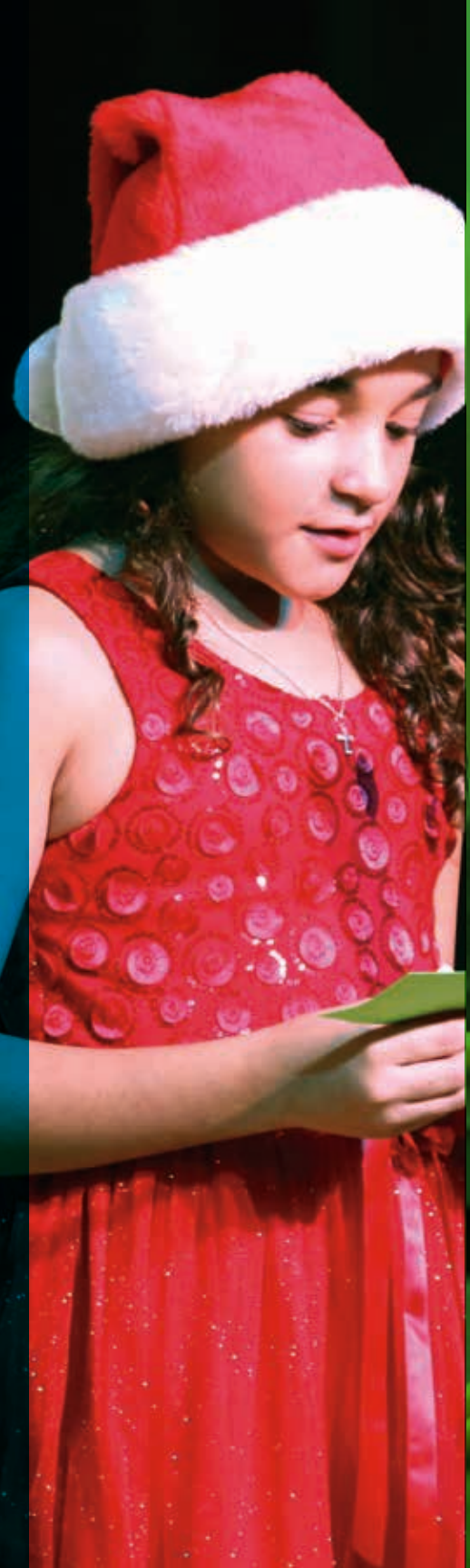
*"I really liked learning about machines and the Kellogg brothers last year in third grade." — BRADY*

*"Teaching within an IB school allows student-driven inquiry and open-ended learning. I truly enjoy watching my students take ownership of their learning." — TINA (TEACHER)*

*be challenged*

**REACH HIGHER. DIG DEEPER. MAKE CONNECTIONS.** Students go further in their discovery of themselves and the world by asking important questions and gaining new perspectives. In an environment where young minds are empowered to learn, *your child belongs.*







"I feel like I know everyone,  
everyone knows me, and  
everyone is nice. It is a great  
community." — THOMAS

*be confident*

DARE TO ASK. DARE TO TRY. DARE TO DREAM BIG. At Notre Dame, students bravely  
discover knowledge, purpose and happiness. Among the bold, *your child belongs.*



*"I liked figuring out our talent show routine with my partner."*  
— EMILY

*"Notre Dame gives its students the tools for personal development in the classroom, in the chapel, and on the field. But it also skillfully provides them with a sense of community and teamwork. I don't believe many schools offer such a unique blend of development for a young person."*  
— MARK (PARENT)

*be involved*

NOTRE DAME PROVIDES STUDENTS with many life-enriching opportunities, like sports, drama, robotics, student council, service and other fun activities. On a team, in a cast or in any group of supportive friends, *your child belongs.*







## A SAFE PLACE TO CONNECT WITH GOD

Explaining the gospel is no small task. Explaining the gospel to children can be even more difficult. The challenge comes in simplifying the language without simplifying the concepts. At Notre Dame we address each child's understanding of spirituality with reverence and respect. One way this is accomplished for our youngest students is through the Atrium, a specially prepared environment that allows the relationship between God and the child to grow through hands-on learning. Students who use the Atrium are free to explore very deep concepts of Catholic faith, and familiar rituals and traditions at a level they can understand through imagination and exploration at their own pace. Learn more about faith at Notre Dame at [www.ndpma.org](http://www.ndpma.org).





*"I like my school because I have fun with my friends and I learn about Jesus and Mary."*

— GRAYSON

*"Every day, before school and before each class, we say a prayer. At the end of the day, we also say a prayer. It is so nice to be reminded throughout the day to be thankful for our blessings." — ELIZABETH*

*be faithful*

STRIVING TO FOLLOW CHRIST, students at Notre Dame embrace opportunities to grow in their faith through daily prayer and spiritual development. At Notre Dame, *every child of God belongs.*

*"The most important part of my job is welcoming each student into my classroom with loving arms. Allowing them to develop in an environment where they feel loved and supported is very important to me."*

— KELLY (TEACHER)

*"Notre Dame is special because almost all of my favorite memories are here. I love it! I want to stay here until college!"*

— CRISTIANA

# *be loved*

TEACHERS WHO CARE. Parents who support. Community that uplifts and empowers.

Embraced and secure, *your child belongs.*





## MIDDLE SCHOOL HOUSES OFFER SENSE OF CONNECTION

Making friends and finding your tribe isn't always easy. But at Notre Dame, community is built into the experience. Every student is assigned a "house" upon enrolling and stays with that house throughout the entirety of his or her middle school journey. Houses include a diverse blend of students from all middle school grade levels. Throughout the year, students engage in several activities, allowing them to grow in their leadership and decision-making skills, gain more confidence, and ultimately move closer to becoming Christian people, upright citizens and academic scholars. Learn more about the Notre Dame Middle School experience at [www.ndpma.org](http://www.ndpma.org).

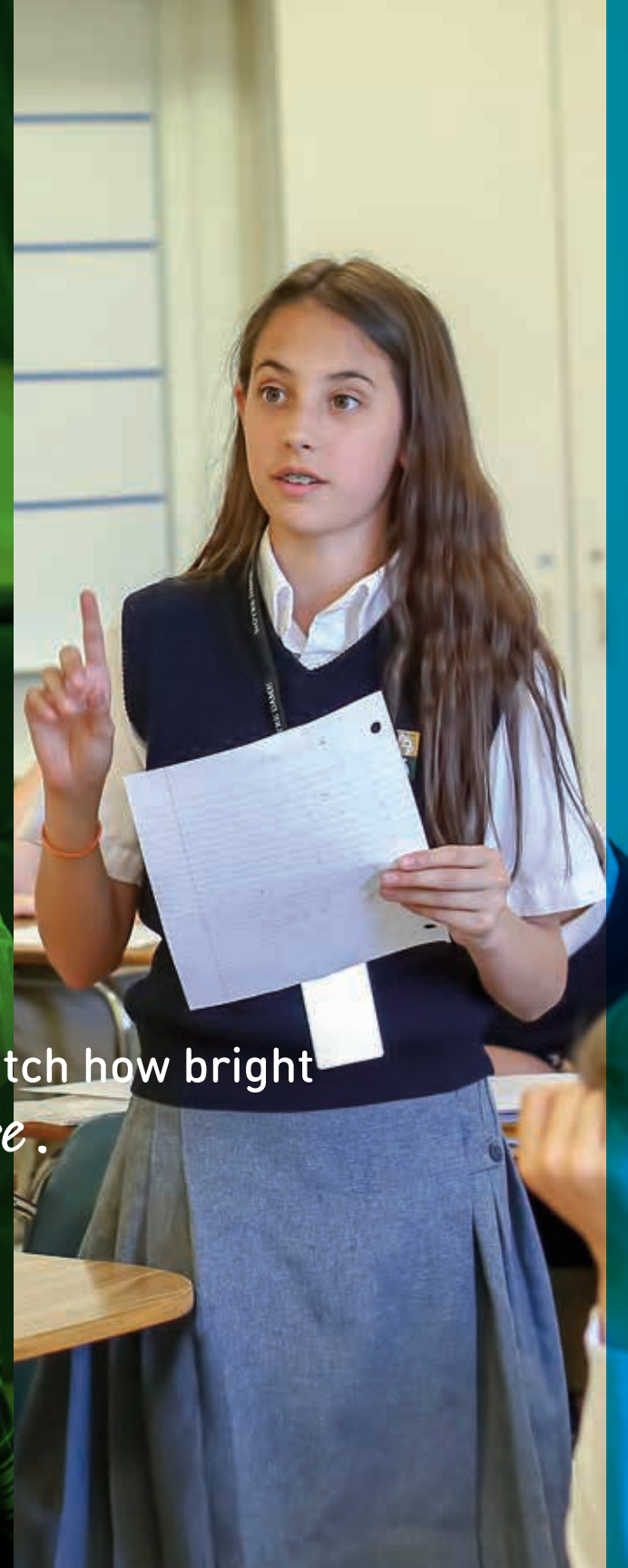
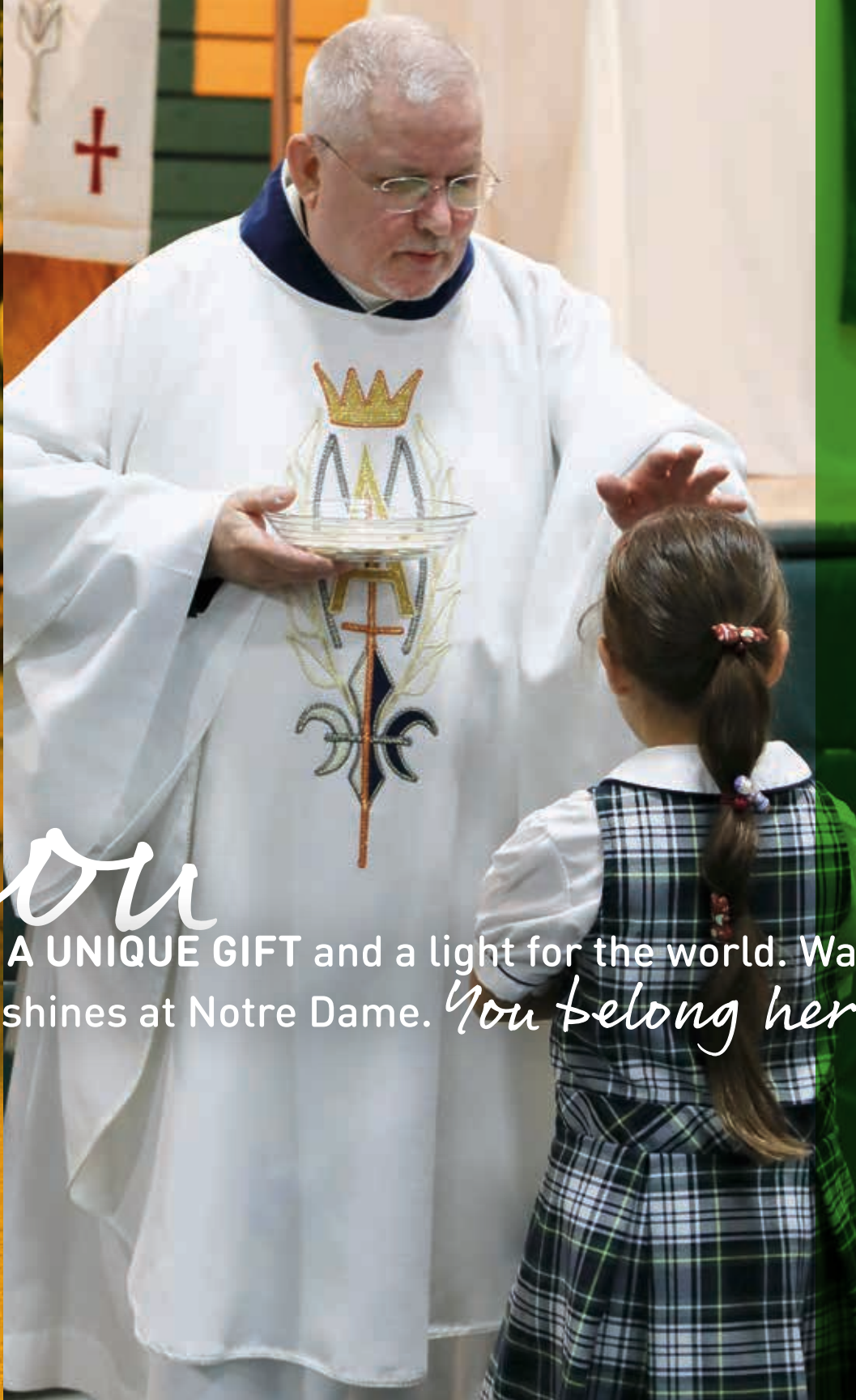




NOTRE DAME LOWER SCHOOL // NOTRE DAME MIDDLE SCHOOL







*be you*

YOUR CHILD IS A UNIQUE GIFT and a light for the world. Watch how bright his or her light shines at Notre Dame. *You belong here.*



**NOTRE DAME PREPARATORY SCHOOL  
AND MARIST ACADEMY PROVIDES ITS  
DIVERSE STUDENT BODY A CATHOLIC  
AND INTERNATIONALLY RECOGNIZED  
COLLEGE-PREPARATORY EXPERIENCE  
OF LASTING VALUE. OUR MISSION:  
WITH GOD, WE FORM CHRISTIAN  
PEOPLE, UPRIGHT CITIZENS AND  
ACADEMIC SCHOLARS.**

Notre Dame is a co-educational school run by the Marist Fathers and Brothers, and is welcoming to students and families of all faiths. We are an authorized International Baccalaureate World School, providing the Primary Years Programme (PYP) from pre-kindergarten through grade 5, the Middle Years Programme (MYP) from grades 6 to 10, and the prestigious Diploma Programme (DP) to juniors and seniors.

Notre Dame students in grades 6 through 12 begin their school day at 7:45 a.m., and finish at 2:45 p.m. They carry eight courses, but sit for four 80-minutes classes per day in a rotating schedule. Built into each day is Community Time, giving all students 30 to 35 minutes to meet with clubs, catch up on schoolwork, collaborate with peers, or visit with a teacher/advisor in a small-group setting. Students in our Lower School, located at 1425 Giddings Road, attend school on the same academic calendar as their older peers. Their school day runs from 7:45 a.m. to 3:05 p.m.





## **ADMISSIONS INFORMATION**

The admission process at Notre Dame is designed to build a diverse student body that strives to fulfill all the major components of our school mission in developing Christians, citizens and scholars. Though Notre Dame serves a predominantly Roman Catholic population, applicants from other Christian denominations or non-Christian faiths are welcome. Based on this approach, Notre Dame focuses on attracting students prepared to thrive in a challenging academic program and interested in becoming a contributor to our learning community through their development in arts, athletics, leadership, and faith life. Notre Dame's model applicant strives to grow in all these areas.

### **REQUIREMENTS FOR ADMISSION TO NOTRE DAME (GRADES PK-8)**

- Complete online application available at [ndpma.org](http://ndpma.org).
- Download and submit Academic Information Request form to student's current school.
- Send online Student Evaluation form(s) to student's current teacher(s).
- Interview.
  - o Parent interview for applicants to PK3 and PK4.
  - o Student-parent interview on scheduled Visit Day—includes math and reading assessments—for applicants to grades K to 5.
  - o Student-parent interview for applicants to grades 6 to 8.

## **ADMISSION TO NOTRE DAME**

Notre Dame begins accepting applications in October, and reviews applicants once all requirements have been met. Admission decisions typically are delivered 24 to 48 hours following the student-parent interview. The initial deadline for applications is December 17. After that date, applicants may continue to pursue admission and ultimately enroll as space permits. Enrollment for the 2022-23 school year opens to admitted students on Acceptance Day, January 21, which is the same date that initial admission decisions will be communicated.

### **SHADOWING AT NOTRE DAME**

Parents wishing to schedule a child who is entering grades 6 to 8 to be "Irish for a Day" may call the Notre Dame Office of Admissions at 248-373-1061, or schedule online by visiting [www.ndpma.org/shadow](http://www.ndpma.org/shadow). A "Visit Day" for students entering K to 5 will be scheduled on the same day as the student-parent interview, at the completion of the admission process.

### **TUITION AT NOTRE DAME**

Notre Dame utilizes a 12-month tuition calendar, beginning in February. In addition to tuition, students are assessed fees for materials such as a tablet, apps, books, etc. Tuition information is available at [www.ndpma.org](http://www.ndpma.org).

## **FINANCIAL AID AT NOTRE DAME**

Notre Dame understands that Catholic education is an investment, and so we aspire to provide every family the opportunity to attend our school regardless of their financial background. All families are welcome to apply online for assistance through Financial Aid for School Tuition (FAST), which requires all filed tax documentation and W-2s (if applicable) as part of its application. Notre Dame begins accepting FAST applications in October. The review period for new families runs from December 1 to January 31. Applications will be accepted after that date, as long as funds remain available. Whenever possible, qualified applicants in the aforementioned two-month review window will receive notice of an award at the same time as their student's acceptance. Awards are applied on September 1.

### **ALUMNI AWARD**

Children of NDP, NDHS (Harper Woods), Oakland Catholic and Pontiac Catholic alumni are eligible for yearly discounts in tuition at Notre Dame. The award is \$1,000 for the first student and is prorated for additional students. Alumni awards cannot be combined with financial aid awards.





NOTRE DAME

Notre Dame Lower School (Grades PK-5)  
1425 Giddings Rd., Pontiac, MI 48340  
248-373-1061

Notre Dame Middle School (Grades 6-8)  
1300 Giddings Rd., Pontiac, MI 48340  
248-373-1061

[ndpma.org](http://ndpma.org)

