

NORTH/SOUTH TRAFFIC HAS NO OBLIGATION TO STOP, UNTIL THEY TURN WEST AT WHICH TIME THEY WOULD THEN BE PASSING THE BUS.

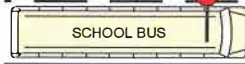
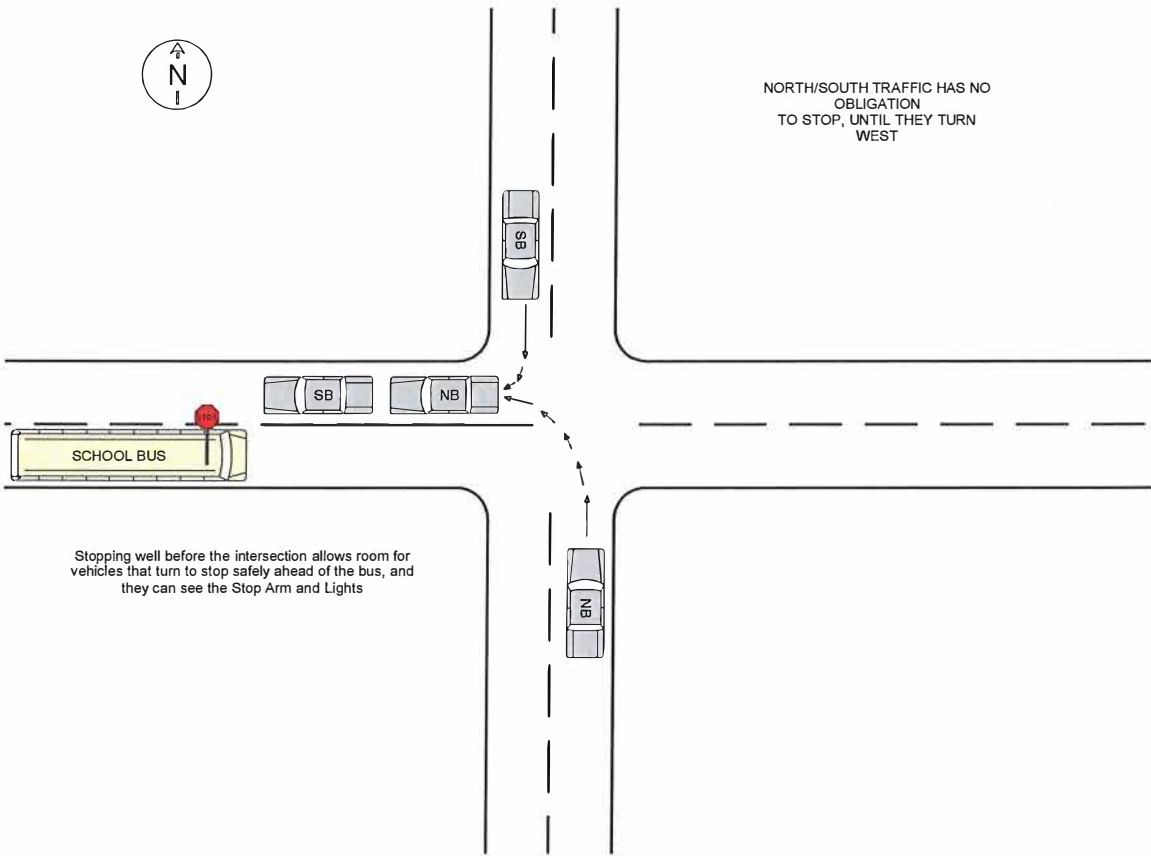
A BETTER PRACTICE WOULD BE TO STOP BEFORE/AFTER THE INTERSECTION

Vehicles traveling North or South do not have ample warning that the bus is loading/unloading. The lights are projected to the front and rear, not to the sides.

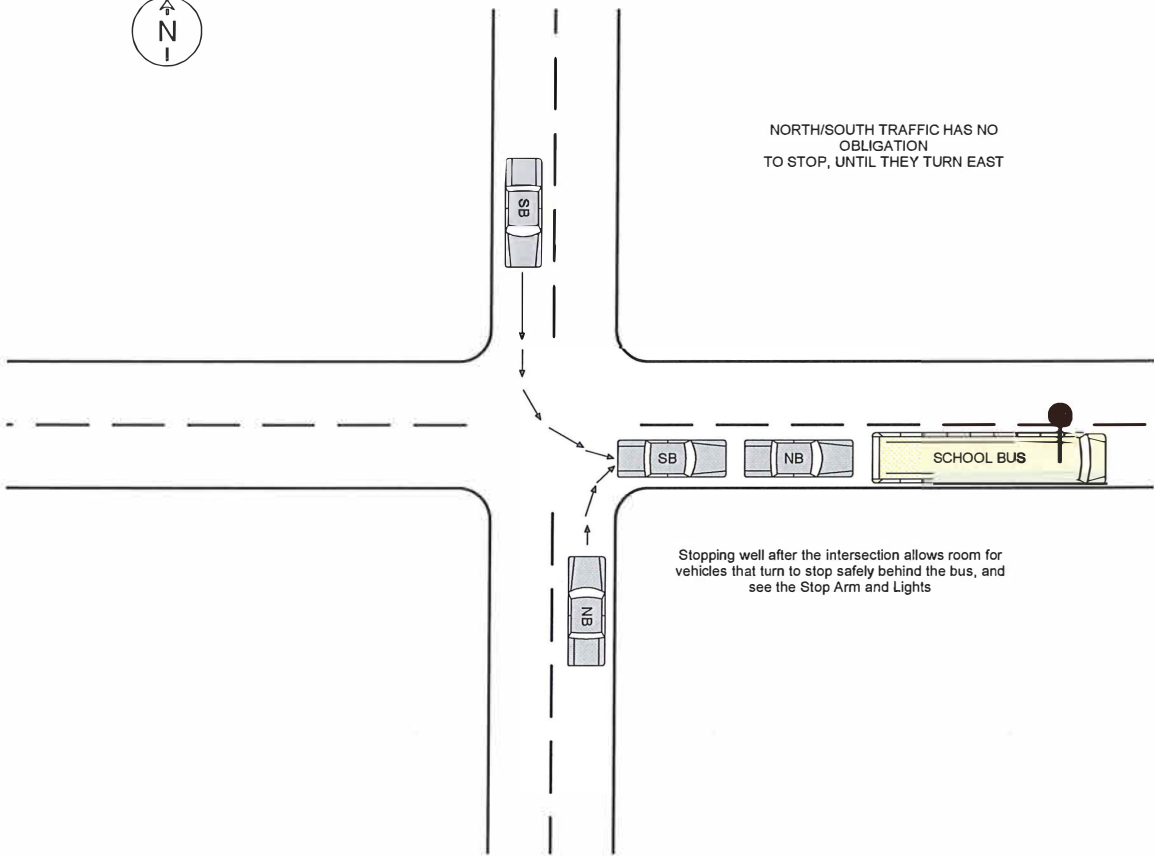
When that North or South vehicle turns West, there is no room for it to stop safely.



NORTH/SOUTH TRAFFIC HAS NO  
OBLIGATION  
TO STOP, UNTIL THEY TURN  
WEST



Stopping well before the intersection allows room for  
vehicles that turn to stop safely ahead of the bus, and  
they can see the Stop Arm and Lights



NORTH/SOUTH TRAFFIC HAS NO OBLIGATION TO STOP, UNTIL THEY TURN EAST

Stopping well after the intersection allows room for vehicles that turn to stop safely behind the bus, and see the Stop Arm and Lights