

Name:

Grade:

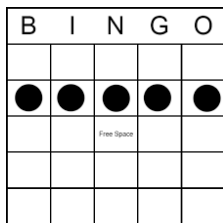
About Someone Different Than You	From a Series	Attend a KML program (name the program)	Short Story	A Book With A Female Heroine
A Book from The Public Library (Sign Off By Librarian)	LGBTQIA+	Discover A New Author	A Book Set In The Past	A scary read
Judged By Its Cover	A Book Set In The Future	Author Of Color	Award Winner	A Book Published In 2022
Recommended By A Friend	Set Outside The U.S.	Explore Nonfiction	Comic Or Graphic Novel	A Book That Became A Movie/TV Show
Read For 30 Minutes	Poetry	Read In One Day	A Book With A Break Up	A Book About Mental Health

Name:
Grade:

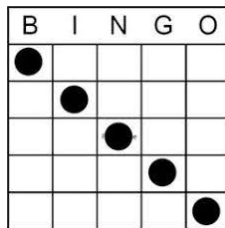
How Does Book Bingo work?

Book Bingo starts on June 17th and all Book Bingo cards must be received by the start of the 2022-2023 school year. Your new ELA teacher will tell you your exact due date when you return to school. Teachers will submit completed Bingo cards to Mrs. Wright, who will enter names into a raffle. Winners will be announced by Monday, September 18th and prizes must be claimed by Friday, September 23rd. Middle schoolers are invited to participate to win Amazon gift cards, Dunkin Donuts gift cards, Barnes and Noble gift cards, and more!!

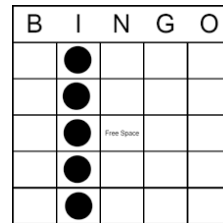
How do I play? Fill in each square with the title of the books you read and/or the activity you completed—each book title can only be used once.



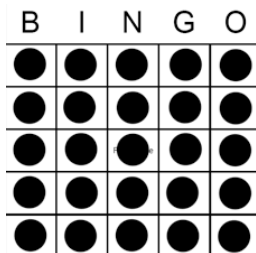
Horizontal Example



Diagonal Example



Vertical Example



Blackout Example

*Adapted from the Seattle Public Library Book Bingo