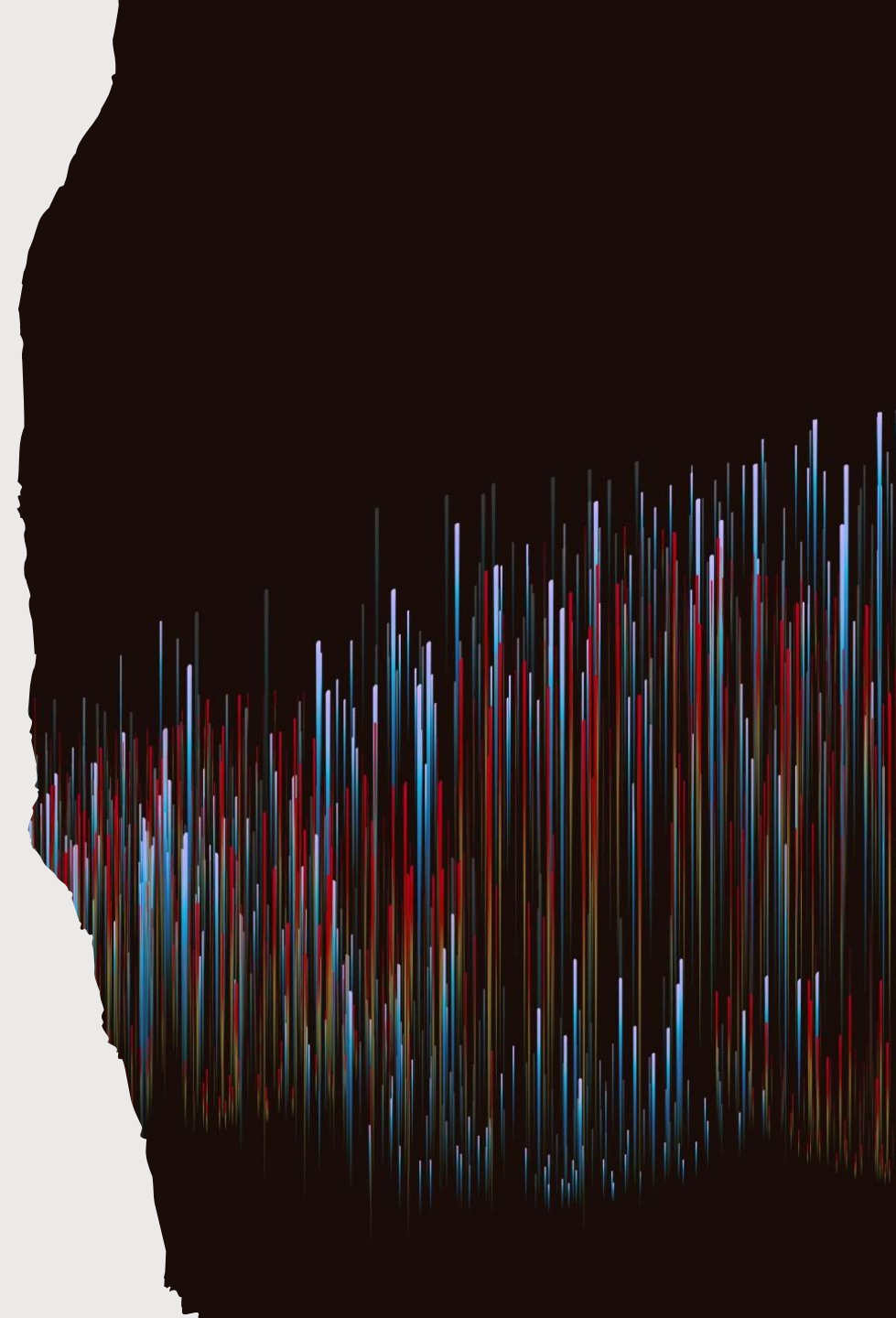


MEASURE X UPDATE

Board of Trustees
February 18, 2021



MEASURE X OVERVIEW

- Measure X Bond Measure approved by the voters in November 2015
- \$148m. for facilities for increased/increasing enrollments
- Phase I—planning began in 2016 for 4 projects
- Phase II—planning began in 2020 for 4 additional projects

MEASURE X PHASE I

Bayside Academy--new gym and locker rooms

Abbott MS—new gym and locker rooms and additional classrooms

Borel MS—new gym and locker rooms and additional classrooms

New elementary school in Foster City for 400–420 students

BAYSIDE GYM AND LOCKER ROOMS

Planning Team

- School Team of parent leaders and staff
- John Cosmos, Principal and Megan Gurka, Assistant Principal
- District Facilities Team

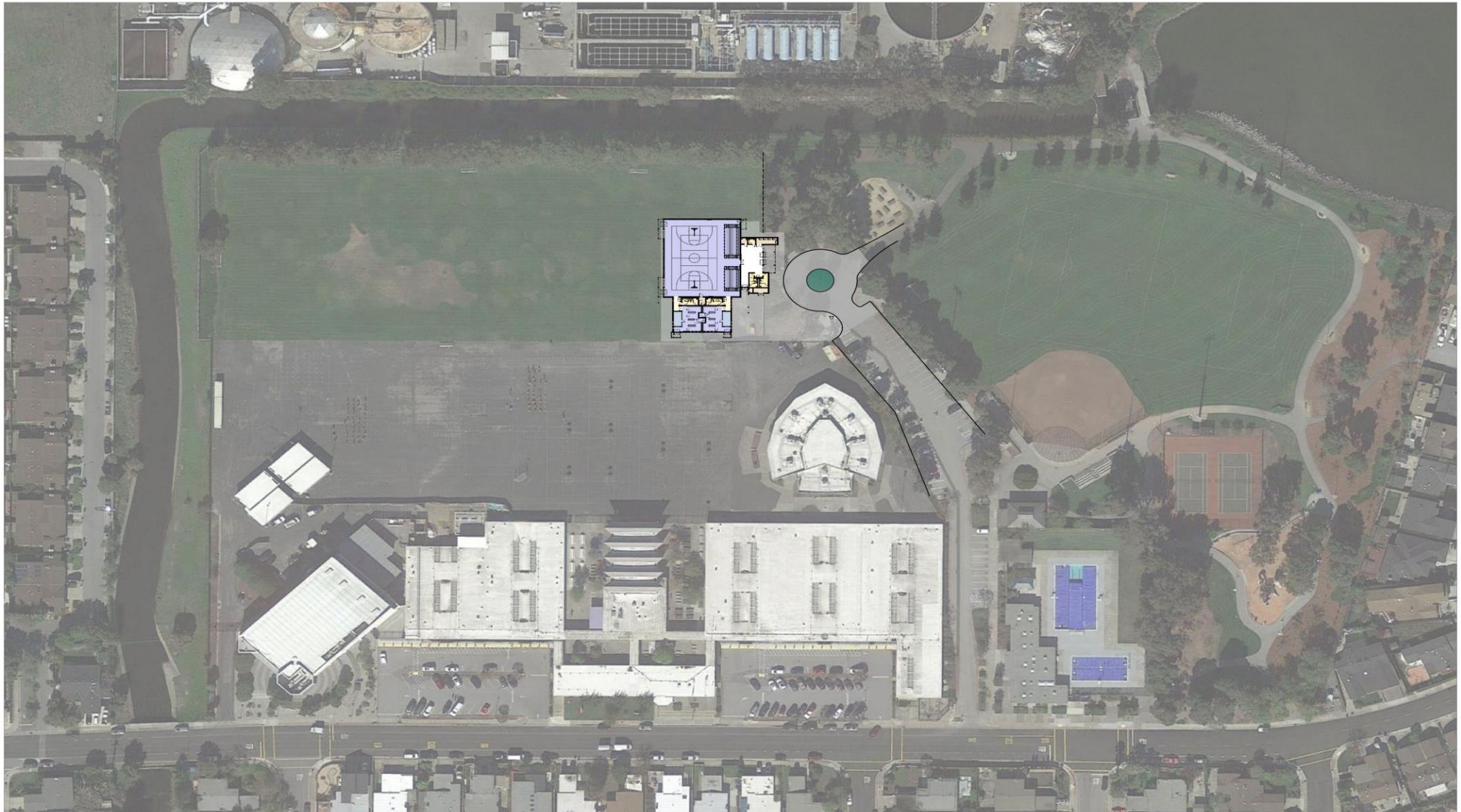
Architect: QKA

General Contractor: Rodan

SMFCSD Construction Project Manager: Kevin Sanders



BAYSIDE GYM AND LOCKER ROOM LOCATION



CAMPUS SITE PLAN
1" = 50'





BAYSIDE GYM AND LOCKER
ROOMS EXTERIOR

BAYSIDE LOCKER ROOMS AND GYM FROM SCHOOL LOOKING NORTH





BAYSIDE GYM INTERIOR

BAYSIDE GYM AND LOCKER ROOMS: STATUS

- COMPLETED, ready for use
- Total budget—construction and soft costs: \$14,464,924
- Change orders paid from Contingency: 2.84%
- Tentative Budget Remaining: \$1,787,754

ABBOTT CLASSROOMS, GYM AND LOCKER ROOMS

- 6 additional classrooms
 - 2 new on top of the locker rooms
 - 4 created from existing spaces/conversion
- New gym and locker rooms
- Planning Team
 - School Team of parent leaders, previous administration, and staff with later assistance from Jeremy Packman, Principal, and Walter Valencia, Assistant Principal
 - District Facilities Team
- Architect: CAW
- General Contractor: Rodan
- SMFCSD Construction Project Manager: Mark Sherrill



ABBOTT LOCATION



Alameda de las Pulgas



ABBOTT EXTERIORS

ABBOTT GYM INTERIOR





ABBOTT INTERIOR
WITH BLEACHERS OPEN



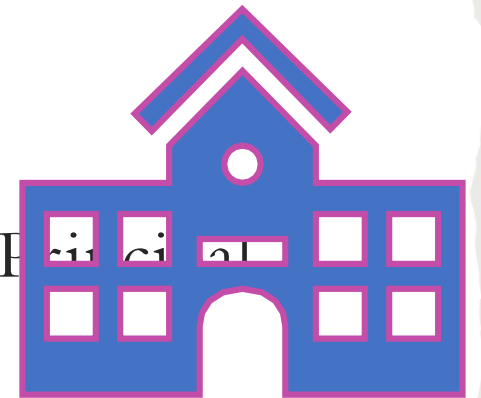
ABBOTT CLASSROOMS

ABBOTT CLASSROOMS, GYM AND LOCKER ROOMS: STATUS

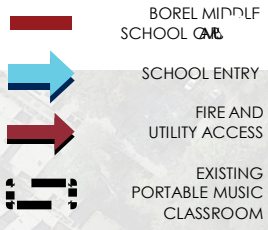
- Classrooms COMPLETED, ready for use August 2020
- Gym and Locker Rooms—final stage—March 2021 ready for use
- Total budget—construction and soft costs: \$22,983,856
- Change orders paid from Contingency: 4.56%
- Tentative Budget Remaining: \$2,320,816

BOREL CLASSROOMS, GYM AND LOCKER ROOMS

- 8 additional classrooms
 - 6 new
 - 2 created from existing spaces/conversion
- New gym and locker rooms
- Planning Team
 - School Team of parent leaders and staff
 - Kenyetta Cook, Principal, and Jessica Notte, Assistant Principal
 - District Facilities Team
- Architect: CSDA
- General Contractors: Rodan and Beals Martin
- SMFCSD Construction Project Manager: Bob Price



LEGEND



BOREL LOCATION





BOREL EXTERIOR—
GYM AND LOCKER ROOMS



BOREL GYM INTERIOR

BOREL LOCKER ROOM





BOREL CLASSROOM WINGS
LOOKING TOWARD GYM

BOREL CLASSROOMS, GYM AND LOCKER ROOMS: STATUS

- Classrooms 7 COMPLETED, ready for use August 2020; 1 more to renovate as soon as new locker rooms are done
- Gym and Locker Rooms—final stage—March 2021 ready for use
- Total budget—construction and soft costs: \$26,520,394
- Change orders paid from Contingency: 3.06% (Beals Martin)
- Tentative Budget Remaining: \$3,805,289

NEW SCHOOL IN FOSTER CITY— BEACH PARK ELEMENTARY SCHOOL

- 17 classrooms built around collaboration areas, multipurpose room, library/resource center, administration building, outdoor play areas and learning nodes
- Planning Team
 - Original Team: parent leaders & staff from existing FC schools
 - Finishing: Amy Snow, Beach Park School Principal, and staff
 - District Facilities Team
- Architect: HMC
- General Contractors: Overaa
- SMFCSD Construction Project Manager: Kevin Sanders



BEACH PARK SCHOOL LOOKING
NORTH FROM ADMINISTRATION
BUILDING ALONG SHELL BLVD.



BEACH PARK SCHOOL CLASSROOM



BEACH PARK SCHOOL LIBRARY/RESOURCE CENTER





BEACH PARK SCHOOL PLAY STRUCTURES

BEACH PARK SCHOOL: STATUS

- Nearing completion with the addition of Lunch Shade Structure and Walkway Canopy that was not within budget until January 2021
- Projected Occupancy—spring 2021
- Total budget—purchase of site, construction and soft costs: \$75,918,830
- Change orders paid from Contingency: 4.53% including Lunch and Walkway Canopy
- Tentative Budget Remaining: \$4,180,217

WRAPPING UP MEASURE X PHASE I

Finishing the three projects

Celebrating when safely
done

Inviting all to enjoy the
gyms and new school

Finalizing the expenditures
for each project and
remaining balances—two
steps

- *now, to un-encumber any remaining encumbrances for items that are done such as technical studies*
- *after close out—reconciling final total expenditures against budget*

MEASURE X
PHASE II:
OVERVIEW

New Elementary School in North
Central San Mateo

New Science and Drama
Buildings at Bowditch MS

New Multipurpose Building and
additional classrooms at Sunnybrae
and George Hall Schools

FIVE MAJOR PHASES IN THE PROCESS FOR A SCHOOL BUILDING PROJECT

Technical Studies,
Location and
Schematic Design
Phase

Construction
Documentation and
Specifications Phase

Division of State
Architect Review
and approval

Public Bidding
Phase and Award
of Contract to
General
Contractor

Site Mobilization
and Construction

SMFCSD PROCESS

District Standards



School Team meetings



Community meetings and opportunity for input

NEW ELEMENTARY SCHOOL IN NORTH CENTRAL SAN MATEO

- Consultation services approved for PAN to begin community engagement and program development for the new school
- Recommendations for North Central School Vision and Program projected for late spring 2021
- Start of school facility planning aligned with school vision and program projected to begin in second half of 2021 after Board direction
- Original Budget (250 student school): \$23 million

BOWDITCH PROJECT

MAJOR ELEMENTS:
NEW SCIENCE AND
DRAMA BUILDINGS

ARCHITECT: HED

TOTAL PROJECT
BUDGET: \$19.5M

BOWDITCH PROJECT LOCATION



BOWDITCH EXTERIORS: DRAMA AND SCIENCE BUILDINGS

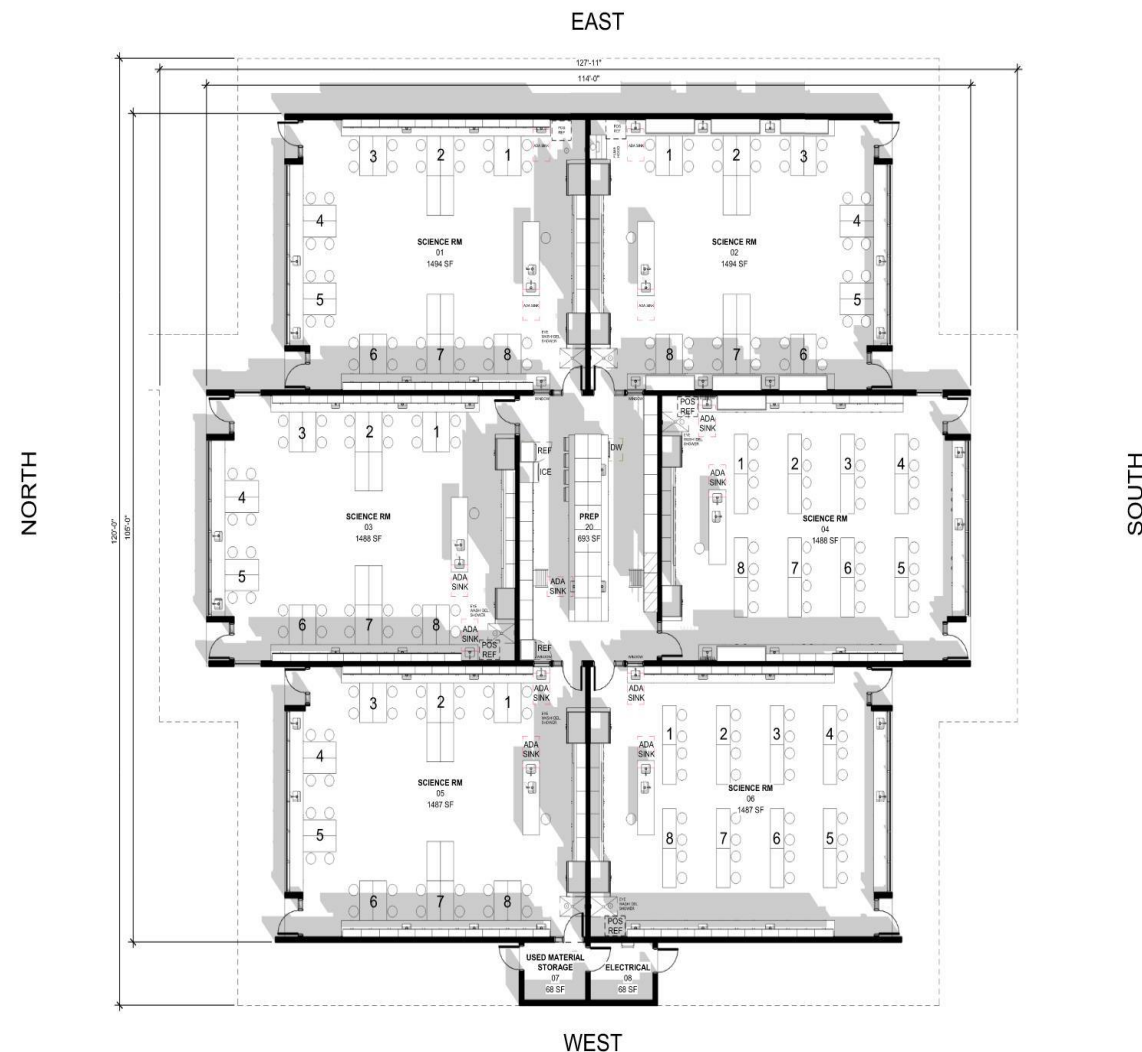


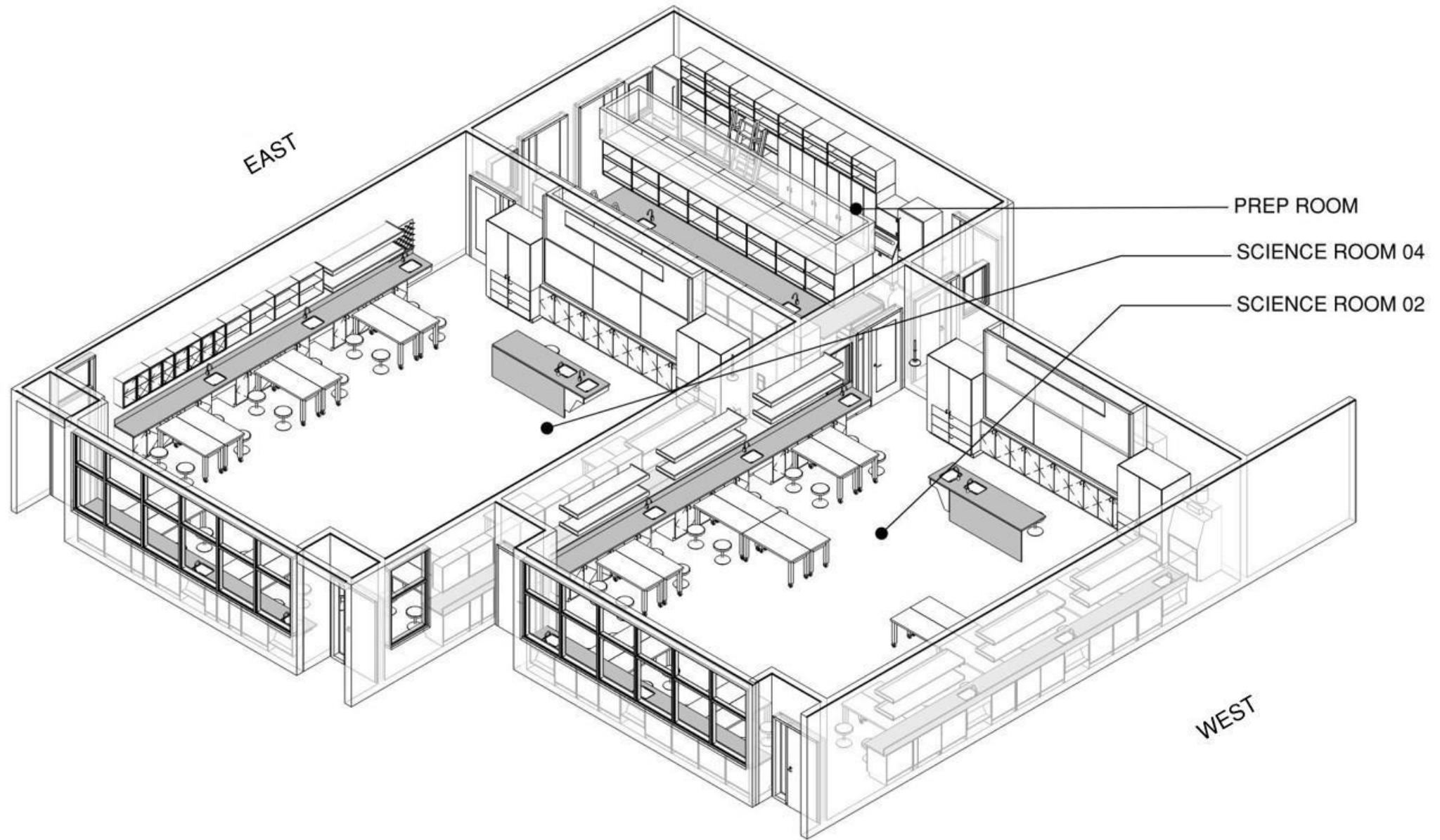
BOWDITCH MIDDLE SCHOOL
CENTER CLASSROOMS CLERESTORY MONITORS
4 NOVEMBER, 2020

EXTERIORS WITH COLOR PALETTE



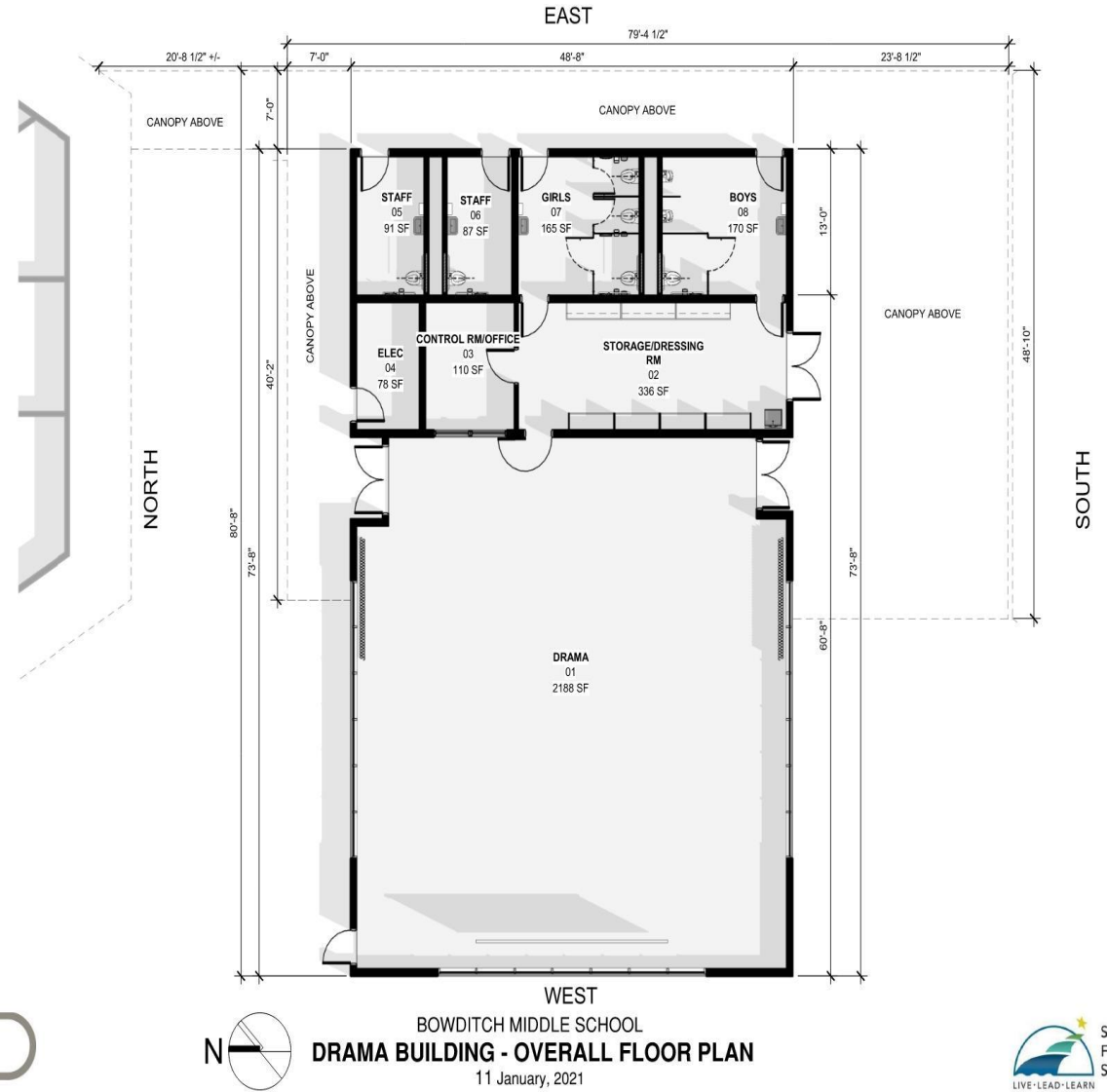
NEW SCIENCE BUILDING INTERIOR



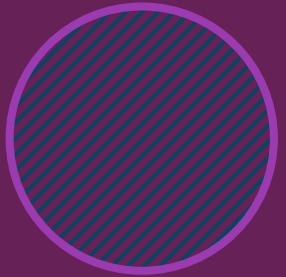


NEW DRAMA BUILDING INTERIOR

HED



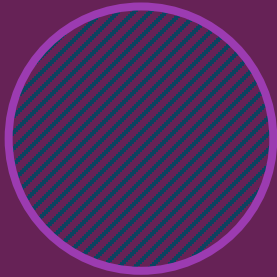
CURRENT PROJECTED TIMELINE—BOWDITCH NEW SCIENCE AND DRAMA BUILDINGS



Technical Studies,
Location and
Schematic Design
Phase

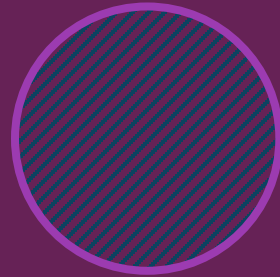
DONE

Summer 2020–
Spring 2021



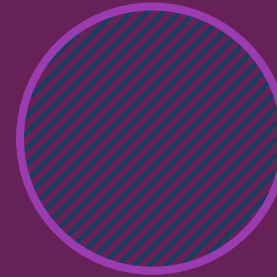
Construction
Documentation
and Specifications
Phase

Now–
Summer 2021



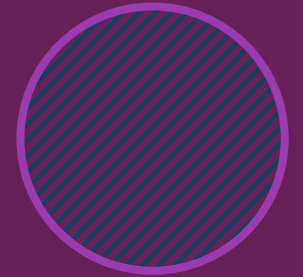
Division of State
Architect Review
and Approval

Summer 2021–
Winter 2022



Public Bidding
Phase and Award
of Contract to
General
Contractor

Spring 2022



Site Mobilization
and Construction

Summer 2022–
end of 2023

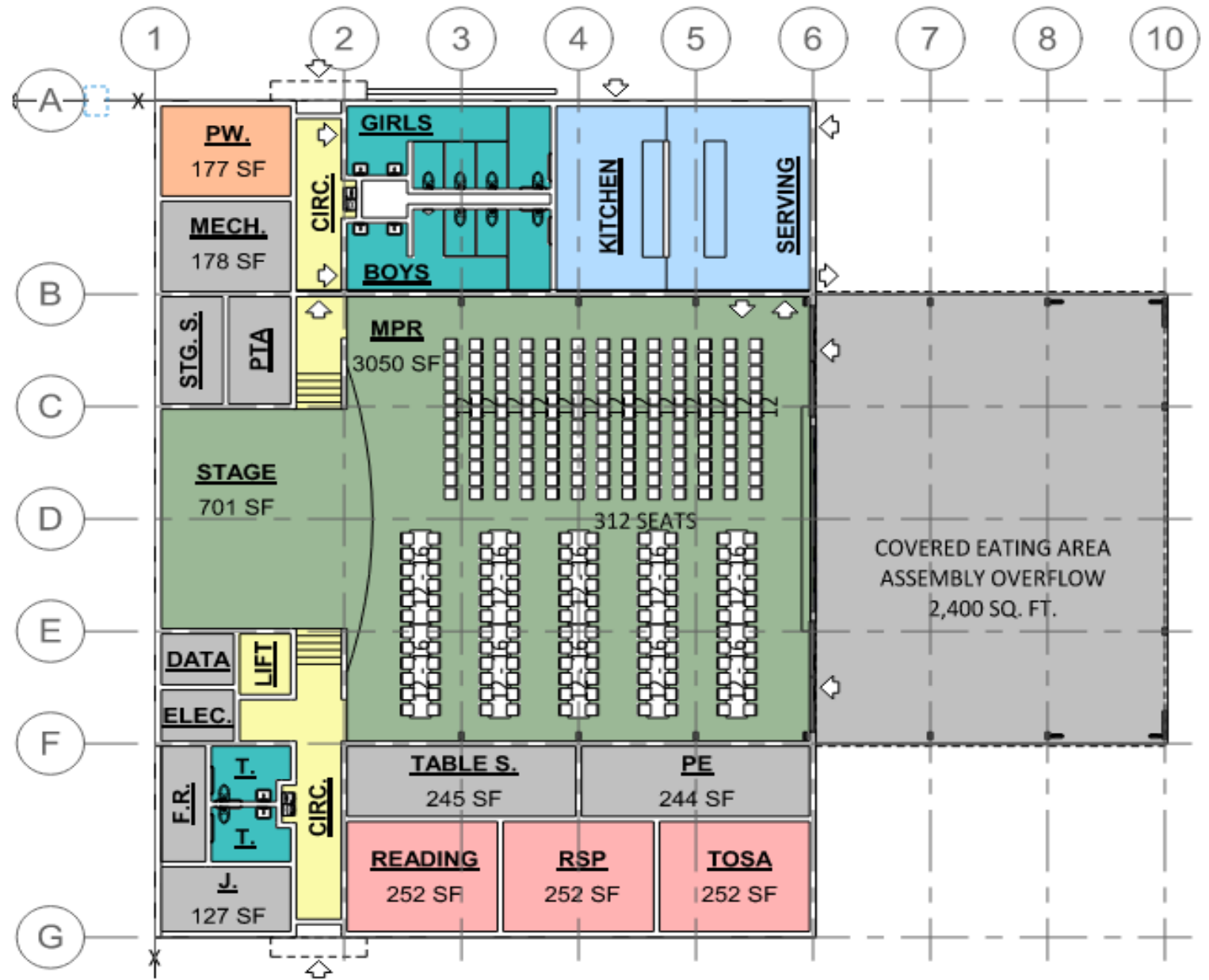
SUNNYBRAE AND GEORGE HALL PROJECTS

- District Standards with unique designs for each school
- Scope: Multipurpose Room
Small instructional rooms/offices to free up classrooms for enrollment growth
Kitchen and serving room
Outside areas
Exterior improvements
Restrooms and storage room
Total Budget: \$11.6 million each

SUNNYBRAE
CAMPUS
WITH NEW
MULTI-
PURPOSE
BUILDING:
LOCATION



SUNNYBRAE MULTI- PURPOSE BUILDING PLAN



GEORGE HALL MULTI- PURPOSE BUILDING: LOCATION



GEORGE HALL MULTIPURPOSE BUILDING PLAN



George Hall Elementary School - Multi Purpose Building

0' 8' 16' 32'

FLOOR PLAN

Jan 2021



GEORGE HALL EXTERIOR FROM LUNCH
SHELTER (BUILT 2018)



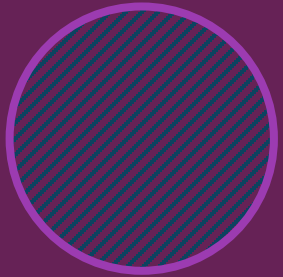
GEORGE HALL MULTIPURPOSE EXTERIORS

Looking northeast from Curtiss Street

GEORGE HALL MULTIPURPOSE BUILDING FROM PLAYGROUND



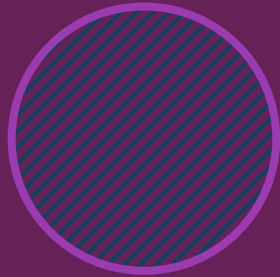
CURRENT PROJECTED TIMELINE—GEORGE HALL AND SUNNYBRAE MULTIPURPOSE BUILDINGS



Technical Studies,
Location and
Schematic
Design Phase

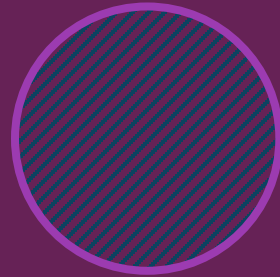
NEARING
COMPLETION

Spring 2020–
Early 2021



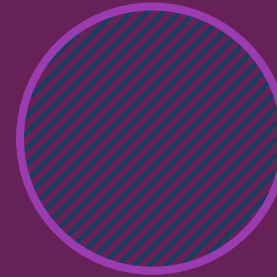
Construction
Documentation
and
Specifications
Phase

Early 2021–
Late Spring
2021



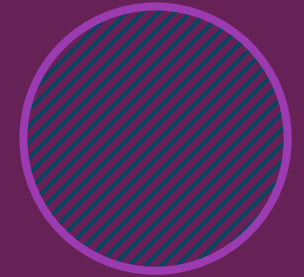
Division of
State Architect
Review and
Approval

Summer 2021–
Early 2022



Public Bidding
Phase and
Award of
Contract to
General
Contractor

Spring 2022



Site
Mobilization
and
Construction

Summer 2022–
Summer 2023

MEASURE X PHASE II PROJECTS: BUDGETS

- *Current independent cost estimates as of Schematic Phase*

Bowditch: within budget

George Hall and Sunnybrae: \$.4–1.6 million over budget each

North Central School—no independent cost estimates yet

- *Considerations*

Phase I has unexpended funds currently and is projected to have positive balances at the end of each project

Independent cost estimates for Phase II have contingencies and escalation to midpoint of construction

SMFCSD Phase II total budget has \$7 million set aside for escalation for all 4 Phase II projects

MEASURE X PHASE II SUNNYBRAE AND GEORGE HALL MPR BUDGETS: NEXT STEPS

1

Complete
projection
of ending
balances on
Phase I

2

Continue to look at
value engineering
possibilities without
losing District
Standards

3

Request will be made in the
future for Board to approve
additional funds to complete
the George Hall and
Sunnybrae Projects

QUESTIONS
AND
COMMENTS

