



YELLOW SPRINGS EXEMPTED VILLAGE SCHOOL DISTRICT FACILITIES MAINTENANCE PLAN ADVISOR

May 3, 2022



MOTZ ENGINEERING

447 MORGAN STREET
CINCINNATI, OH 45206
PHONE 513-621-5400

7800 SOUTHLAND BOULEVARD, SUITE III
ORLANDO, FL 32809
PHONE 407-205-8207

34 W GAY STREET SUITE 100
COLUMBUS, OH 43215
PHONE 614-564-9773



MOTZ ENGINEERING

May 3, 2022

Via Email

Yellow Springs Exempted Village School District
Attn: Dr. Terri L. Holden, Superintendent
201 South Walnut Street
Yellow Springs, OH 45387

Re: Facilities Maintenance Plan Advisor

Dear Dr. Holden:

As a woman owned, Ohio EDGE and WBE certified firm, we are excited to submit herewith our Proposal and Statement of Qualifications to provide Maintenance Planning Services for Yellow Springs Exempted Village School District. We hope that our qualifications will convey to you and your colleagues our firm's interest in your upcoming projects, our firm's capabilities in the areas of engineering and planning, and our firm's direct experience with your specific project types.

Our firm is looking forward to being a pivotal member of your team. Our firm has performed similar services for a variety of clients on numerous recent projects – it is what we do every day. For any Structural Engineering needs we have partnered with THP Limited, a well-established and well-qualified firm established in 1973. Motz Engineering and THP have a 50-year working relationship, delivering a seamless project process with mutual respect and understanding.

Motz Engineering is committed to award winning design, program expertise, and managed project delivery, all key elements to the success of your upcoming projects for your facilities. Our overwhelming experience will produce innovative, cost effective, and energy conscious designs that will serve Yellow Springs Schools.

We greatly appreciate being considered and we are very enthusiastic about your upcoming projects. We are qualified to provide the professional engineering services you need, and we look forward to working with your team. We believe that our experience, familiarity with your facilities and standards, competence, personnel, reputation, availability, and ability justify your selection of our firm.

Sincerely,

MOTZ ENGINEERING

Patricia S. Murdock, EI
President

447 MORGAN STREET | CINCINNATI, OH 45206
34 W GAY STREET | SUITE 100 | COLUMBUS, OH 43215
7800 SOUTHLAND BLVD | SUITE III | ORLANDO, FL 32809

Proposal Form

Proposer's Name: Motz Consulting Engineers, Inc. dba Motz Engineering
Proposer's Address: 447 Morgan Street, Cincinnati OH 45206
Principal Contact: Patricia S. (Suzie) Murdock, President
Telephone Number: 513-621-5400
Federal Tax ID Number: 31-0997126
Date Submitted: May 3, 2022

Article 1 — Pricing Proposal

1.1 Price. The Proposer will perform all Services required under the Facilities Maintenance Plan Advisor Agreement (the "Agreement") for the sum of:

<u>Forty Eight Thousand Seven Hundred and Fifty</u>	<u>Dollars</u>	<u>\$ 48,750</u>
<i>Amount in Words</i>		<i>Amount in Numerals</i>

1.2 If Proposer is submitting proposed modifications to the Scope of Services included in the draft Agreement included in the RFP Materials, attach a list of proposed modifications and corresponding price adjustments, to this Proposal Form as an exhibit.

Article 2 — Addenda

2.1 Receipt of the following Addenda is hereby acknowledged:

Addendum No.	<u>1</u>	Date:	<u>April 26, 2022</u>
Addendum No.	<u> </u>	Date:	<u> </u>
Addendum No.	<u> </u>	Date:	<u> </u>

Article 3 — Acknowledgements & Information

3.1 Proposer hereby acknowledges that the following representations in this proposal are material and not mere recitals:

3.1.1 Proposer has read and understands the Agreement and agrees to comply with all requirements of the Agreement.

3.1.2 Proposer represents that the Proposal is based upon the requirements of the Agreement.

3.1.3 Proposer, and each person signing on behalf of Proposer, certifies, under penalty of perjury, that to the best of the undersigned's knowledge and belief:

3.1.3.1 The Pricing Proposal amount has been arrived at independently without collusion, consultation, communication or agreement, for the purpose of restricting competition as to any matter relating to such price;

3.1.3.2 Unless otherwise required by law, the Pricing Proposal has not been knowingly disclosed by the Proposer and will not knowingly be disclosed by the Proposer prior to the Response Deadline, directly or indirectly, to any other Proposer; and

3.1.3.3 No attempt has been made or will be made by the Proposer to induce any other individual, partnership, or corporation to submit or not to submit a proposal for the purpose of restricting competition.

3.1.4 Proposer will enter into and execute the Agreement with the Owner that is awarded on the basis of this Proposal.

3.1.5 Proposer certifies that the upon the award of the Agreement, the Proposer will ensure that all of the Proposer's employees, while working at the Facilities, will not purchase, transfer, use, or possess illegal drugs or alcohol or abuse prescription drugs in any way.

3.1.6 Proposer agrees to furnish any information requested by the Owner to evaluate the experience, resources, and qualifications of the Proposer.

3.1.7 Proposer represents that it is not subject to a finding for recovery under Section 9.24, ORC, or that Proposer has taken the appropriate remedial steps required under Section 9.24, ORC, or otherwise qualifies under this section.

Signed and Submitted:

Motz Engineering

Proposer's Name

By: 

Signature

Patricia S Murdock, President

Printed Name & Title

May 3, 2022

Date



MOTZ ENGINEERING FIRM BACKGROUND

MOTZ ENGINEERING

ABOUT US

Founded in 1935, and purchased from the Motz family in 2016, Motz Engineering continues today under the leadership of Suzie Murdock. Suzie is passionate about engineering and conveys that passion to our clients, employees and partners. As a proud woman owned, family business, Motz Engineering continues our tradition of high quality professional engineering services.

Motz Engineering specializes in complex mechanical, electrical and plumbing professional engineering and design services. Motz also offers full commissioning services including LEED commissioning for K-12, Higher Education, Healthcare, Central Plant, Data Center, Aviation and clean environments. Motz Engineering also provides construction management services and program management for complex mechanical system such as chiller plants, fueling stations, central energy plants, mechanical and control system upgrades, and specialized MEP aspects of large projects.

LOCATIONS

CINCINNATI

447 Morgan Street
Cincinnati, OH 45206

COLUMBUS

34 W Gay Street
Suite 100
Columbus, OH 43215

ORLANDO

7800 Southland Boulevard
Suite III
Orlando, FL 32809

WOMEN-OWNED, WBE & EDGE CERTIFIED



MECHANICAL:

Air Distribution Systems; Building Automation and Control Systems; Building Management Systems; Central Utility Plant Systems; Steam, Chilled Water, Hot Water; Chiller / Boiler

Systems; Cooling Tower Replacement; Dedicated Outside Air Systems; Energy Modeling; Heat & Energy Recovery Systems; Geothermal Systems; Energy-Efficient Designs; Energy Code Compliance, meeting ASHRAE 90.1 Standards; Laboratory Exhaust Systems; Life Cycle Analysis; LEED Certification; Hydronic Piping Systems; Radiant In-Floor Heat Systems; Under Floor Air Distribution; Water Source Heat Pump Systems; Variable Refrigerant Flow Systems



ELECTRICAL:

Audio Visual and Information Technology Design; Arc Flash Hazard Analysis; Critical Power Systems; Emergency Power Systems;

Energy Code Compliance, meeting ASHRAE 90.1 Standards; Fire Detection and Alarm System Design; Fire Pump Design; Interior and Exterior Lighting Control, Design and Modeling; Generator Systems; Grounding/Lightning Protection; Medium & Low Voltage Distribution Systems; Life Safety Design; Power Supply and Distribution Security and Access Systems; Short Circuit Analysis & Coordination Studies; Uninterruptible Power Supply Systems; Utility Distribution Systems



PLUMBING:

Cross Connection Systems; Domestic Hot Water Systems; Fire Protection Systems; Fire Pump Systems; Foam Fire Protection Systems;

Laboratory Gas Systems; Laboratory Water Systems; Medical Gas Systems; Natural Gas Systems; Religious Water Systems; Sanitary System Design; Sewage Ejector Systems

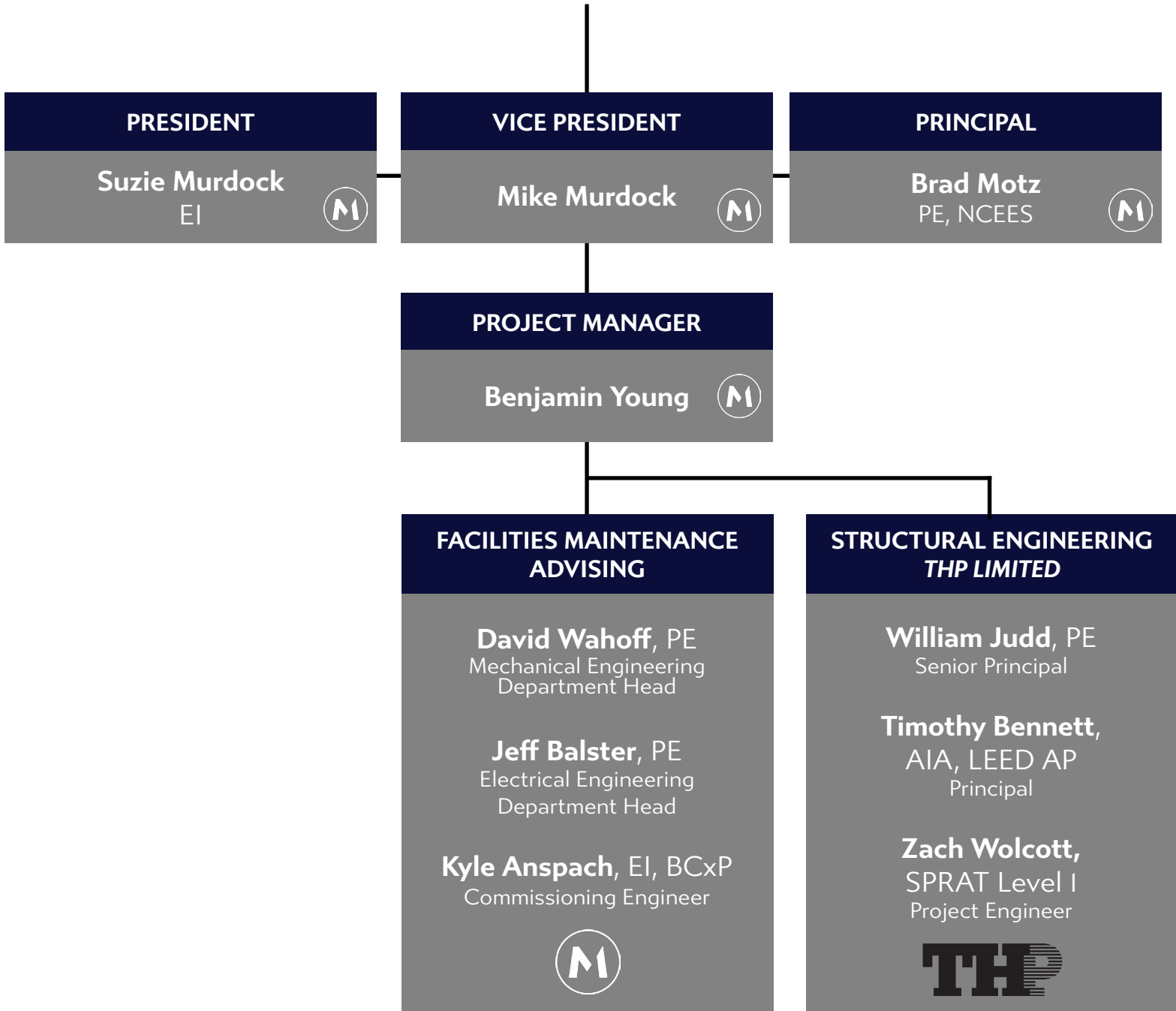


COMMISSIONING:

Healthcare; Aviation; Data Centers; Corporate and Educational Facilities; Design Reviews; HVAC Systems; Emergency Power Systems;

Equipment Pre-Functional Tests & Start-Ups; Boilers; Chillers; Cooling Towers; Fire Pumps; Generators; Switchboards; Geothermal Systems; LEED Design Standards







MOTZ ENGINEERING

Founded in 1935 and purchased from the Motz family in 2016, Motz Engineering continues today under the leadership of Suzie Murdock. As a proud woman owned, family business, Motz Engineering continues our tradition of high quality professional engineering services.



Suzie Murdock, EI President

Since joining the firm in January of 2016 Suzie has been transitioning her prior engineering experience to the Motz Engineering model while stepping into her managerial role with the Motz team of Professional Engineers. She is involved in all aspects of project management, design and coordination, and continues to expand her customer and market relationships through weekly meetings with clients and architects, managing project submittals and information requests.

Relevant Experience: NKCAC Head Start, Mariemont High School, Elder High School; Indian Hill Exempted Village Schools, Notre Dame Academy, Purcell Marian High School, Forest Hills Local School District, Xavier University



Michael Murdock Vice President

With over 30 years in the industry, Mike successfully managed multiple teams of professional builders, engineers and designers, on highly complex projects. Mike is highly proficient in LEED Commissioning projects and maintenance planning. Mike is a constructive, hands-on, customer advocate and outcome focused leader who works successfully with architects, highly demanding clients, and contractors.

Relevant Experience: Great Parks of Cincinnati, Notre Dame Academy, Mariemont High School, Elder High School; Indian Hill Exempted Village Schools, Forest Hills Local School District, Xavier University



Brad Motz, PE Principal

Since joining the firm in 1979, Brad's responsibilities have increased to include the design of mechanical and electrical systems, energy conservation, access/security, construction observation, cost estimating, life-cycle cost analysis, and overall project coordination.

Relevant Experience: Elder High School, Forest Hills Local School District, Indian Hill Exempted Village School District, Madeira City Schools, Mariemont City Schools, Notre Dame Academy, Xavier University





Ben Young Operations Manager

Ben has 27 years of experience in construction management. His experience ranges from zoos, apartment buildings, athletic complexes, industrial, to commercial, and everything in between. Ben works with Motz Engineering's Leadership Team to determine key areas of growth to make our firm run effectively and efficiently.

Relevant Experience: Indian Hill Exempted Village Schools, Great Oaks Career Centers, Xavier University



David Wahoff, PE Mechanical + Plumbing Department Head

Since joining the firm in 1987, David has been involved in the design and detailing of air handling units, mechanical piping, temperature control, underground storage tanks, computer rooms, refrigeration systems and the selection of mechanical equipment. Dave's responsibilities have increased to include site preparation work, construction, and assistance with specification writing for smaller scope jobs observation.

Relevant Experience: NKCAC Head Start, Mariemont High School, Elder High School; Indian Hill Exempted Village Schools, Notre Dame Academy, Purcell Marian High School, Forest Hills Local School District, Xavier University



Jeff Balster, PE Electrical Department Head

An electrical Engineer with 17 years of experience in electrical distribution, lighting and ancillary system design, Jeff reliably demonstrates his abilities in investigating electrical deficiencies, producing detailed reports summarizing results, completing code compliance evaluations, delivering design support, and compiling cost estimates of preliminary and final project milestones.

Relevant Experience: Indian Hill Exempted Village Schools, Mariemont High School, Notre Dame Academy, Purcell Marian High School, Great Oaks Career Centers, NKCAC Head Start, Xavier University



Kyle Anspach, EI, BCxP Commissioning Engineer

Kyle is experienced through all phases of commissioning from design through post occupancy. Specific key commissioning tasks executed within each phase include review of construction documents, OPR/BOD submittals, document development includes commissioning plans, pre-functional checklists, functional performance checklists, and integrated system tests.

Relevant Experience: Brunswick City Schools, Chillicothe City Schools, Miami Trace High School, West Clermont Local School District, Winton Woods, Xavier University





SERVICES

Structural Engineering

Restoration &
Waterproofing

Building Envelope

Parking

Firm Profile

THP is a client-focused, professional structural and architectural engineering consulting firm established in 1973. The firm specializes in large-scale, complex structural engineering, parking, restoration and building envelope.

THP assesses and designs structures for institutions, governmental owners, corporate owners, developers, contractors and architectural clients. These projects are completed under delivery methods ranging from traditional competitive bidding to design-build to multi-phase, fast track construction, Construction Manager at Risk, and Integrated Project Delivery (IPD).

THP principals and project managers closely monitor projects and have a reputation for adherence to the most demanding schedules. We strive to produce practical, buildable designs through the application of sound technical principles. Like the clients we serve, THP is committed to restraining construction costs.

Our Reach

THP provides structural engineering, building envelope consulting for new and existing construction, and parking garage consulting for new and existing construction. Projects designed by THP are located throughout the United States and abroad.



WILLIAM M. JUDD, PE, SENIOR PRINCIPAL

Bill's primary focus involves structural restoration and building envelopes. He has a passion for solving the unique challenges that come with existing structures and fully utilizing field assessments. Bill strives to bring effective communication to projects by listening to clients and partners to achieve a superior level of service for all parties.

PROJECT EXPERIENCE: University of Cincinnati Braunstein Hall, Crosley Tower, circa 1966, Memorial Hall, circa 1923, Scioto Dormitories, circa 1960's, Armory Fieldhouse, circa 1954, Clermont College Snyder Building, Daniels Hall, circa 1965, Engineering Records Center; The Ohio



TIMOTHY J. BENNETT, AIA, LEED AP, PRINCIPAL

Tim specializes in the assessment and repair of many structures' building envelopes. His experience includes maintaining façades, diagnosing failures, and identifying liabilities to determine repair scopes. He takes pride in detailing solutions that are simple, buildable, cost-effective, and aesthetically appropriate. He emphasizes the importance of quality construction administration and works to create repairs that are indistinguishable from the original work.

PROJECT EXPERIENCE: University of Cincinnati Braunstein Hall, Engineering Research Center, Memorial Hall, circa 1923; The Ohio State University Hayes Hall, Hale Hall, Graves Hall and Biological Sciences Building; Miami University Western Campus Bridge



ZACH WOLCOTT, SPRAT LEVEL 1, PROJECT ENGINEER

Zachary works within THP's Restoration Service Group to craft solutions to the complex problems that come with different projects. He collaborates with contractors, owners, and team members to restore and maintain existing structures while focusing on the client's vision. He takes pride in his ability to complete projects in a cost-effective and efficient manner. Zachary also serves on the rope access team for THP's building envelope group to inspect façade.

PROJECT EXPERIENCE: University of Cincinnati assessment of parking garages; Western Kentucky University parking garage; Columbus State Community College assessment of 31 buildings; CampusParc assessment of parking garages and master planning

MOTZ + THP TEAM EXPERIENCE



84.51

Floors 2, 3, 4 Study

Dan Beard Council – Boy Scouts of America

Scout Achievement Center

Fifth Third Bank

8th, 14th, 15th, and 17th Floors Renovation
25th, 28th, and 29th Floors Renovation
Bank Lobby (Museum)
Madisonville Operations Center Loading Dock
Project Connect
The Forum

Fifth Third Center Garage, Dayton Ohio

Structural Repairs

Indian Hill Exempted Village School District

Middle School/High School Campus - Mechanical
System Upgrades

Kingston House, Cincinnati, Ohio

Garage Upgrade

Madeira City Schools

High School Addition and Renovation
New Middle School
New Elementary School

Miami University – Oxford Campus – Oxford, Ohio

New Ice Arena
New Southwest Campus Garage Facility
North Campus Academic Garage

The Ohio State University

Research Center
Chiller/Condenser Replacement

The Provident Bank

Data Center
Disaster Recovery Expansion Project

The Public Library of Cincinnati and Hamilton County

New Reading Branch
New St. Bernard Branch

St. Xavier Church

Undercroft Renovation

University of Cincinnati

Braunstein Hall Rehabilitation
Langsam Library and Garage
New 20" Chilled Water Mains
Southwest Quadrant
Teachers College/Dyer Hall Rehabilitation –
Phases 2 and 3

University of Toledo

Carlson Library

MASTER PLANNING EXPERIENCE



Cincinnati/No. Kentucky International Airport

Master Plan for Central Refrigeration Plant
Preparation of Master Mechanical Specifications

Cincinnati Public Schools

Development of MEP Standards

City of Cincinnati Park Board

Krohn Conservatory - Master Planning

Central Trust Tower

Development of Master Plan for HVAC Systems

Elder High School

Energy Audit and Facilities Assessment

Federal Reserve Bank of Cleveland

Columbus Branch Master Plan
Development of Master Plan for Chilled Water System

Forest Hills Local School District

District-Wide Master Planning

- Anderson High School
- Turpin High School
- Nagel Middle School
- Ayer Elementary School
- Maddux Elementary School
- Mercer Elementary School
- Sherwood Elementary School
- Summit Elementary School
- Wilson Elementary School

Great Parks of Hamilton County

Sustainability Master Plan

Greater Cincinnati Energy Alliance

200 West Fourth Street Building
Energy Audit and Facilities Assessment

Greater Cincinnati Homeless Coalition

Energy Audit and Facilities Assessment

Hamilton County Mental Health and Recovery Services Board

Energy Audit and Facilities Assessment

2340 Auburn Avenue

2350 Auburn Avenue

3009 Burnet Avenue

Indian Hill Exempted Village School District

Auxiliary Facilities Master Planning - Athletic and Art Performance Venues
Commons Air Conditioning Feasibility Study
District Facility Master Plan Update
Energy Audit and Facilities Assessment
Energy Audit and Facilities Assessment Update
Pre-Bond Levy Planning

La Salle High School

Energy Audit and Facilities Assessment

Latonia Baptist Church

Energy Audit and Facilities Assessment

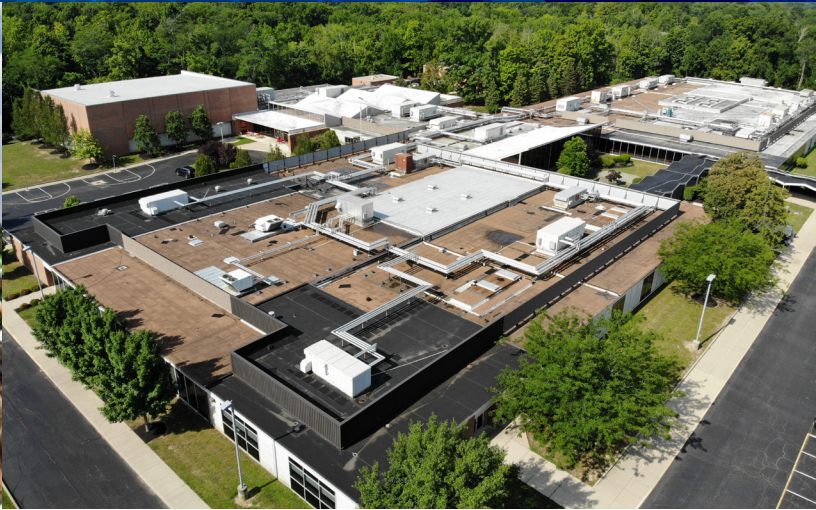
Madeira City Schools

District Master Planning

Mariemont City Schools

High School Master Planning

MASTER PLANNING EXPERIENCE



Montgomery Community Church

Energy Audit and Facilities Assessment

Mt. Notre Dame High School

Master Planning

Notre Dame Academy

HVAC System Study

Oxford Presbyterian Church – Memorial Building

Development of Master Plan for HVAC Systems

Pauline Warfield Lewis Center

Campus Consolidation – Master Planning Work

The Provident Bank

925 Dalton Street Data Center
Master Planning of Dalton Street Complex

St. Antoninus Parish

Energy Audit and Facilities Assessment

St. Ignatius Loyola School & Church

Energy Audit and Facilities Assessment

St. Xavier Church

Energy Audit and Facilities Assessment

St. Ursula Villa School

Master Plan of Mechanical and Electrical Systems
Energy Audit and Facilities Assessment

Tri-County Baptist Church

Master Plan of Mechanical and Electrical Systems

Union Presbyterian Church

Development of Master Plan for HVAC Systems

US Bank

425 Walnut Street Energy Audit and Facilities
Assessment
Operations Center Energy Assessment

University of Cincinnati

121 East McMillan Study
Daniels Hall Energy Audit and Facilities
Assessment

Xavier University

Campus Utility Master Plan (2005/2009/2014)
Central Utility Plant Master Planning
Joseph Hall Energy Audit
Kuhlman Hall Energy Audit
Schmidt Hall Master Planning

K-12 EDUCATION EXPERIENCE



Blanchester Local School District - \$31 Million

Middle School Renovation
New High School
Original Putman Elementary School
Putman Elementary Addition and Renovation

Brunswick City Schools (\$65 Million)

New Middle School - Commissioning

Chillicothe City Schools - \$51.7 Million

New K-2 Primary School - Commissioning
New 3-7 Elementary School - Commissioning

Clark-Shawnee Local School District - \$43.9 Million

New Elementary/Middle (PK-6) School - Commissioning
Middle/High School Renovation - Commissioning

Cincinnati Public Schools

Cheviot School - Boiler Replacement
Development of Generic Specification for Boiler Projects
Development of MEP Standards
Gamble Middle School - Replacement of Electric Service
Guilford School Renovation
Hoffman - Replacement of Electric Service
Millvale School - Boiler Replacement
Queen City Vocational Center - Replacement of Rooftop A.C.U.
Taft High School - Air Conditioning of Cafeteria
Walnut Hills High School - New Science and Arts Wing (\$8 Million)
Western Hills High School - Security Alarm Analysis
Woodward High School - Air Conditioning of Five Classrooms

Edgewood City School District - \$22 Million

Babeck Elementary - Classroom, Media Center, and Gym Addition
Edgewood High School - Classroom, Gym, and Auditorium Addition
Trenton/Bloomfield Elementary - Classroom, Media Center, and Gym

Elder High School

Energy Audit and Facilities Assessment
Panther Fitness Center

Fairfield City School District - \$1.5 Million

Various Facilities - Electrical Upgrade for Computers in Classrooms

Fayetteville-Perry Local School District - \$500,000

Disability Access Project
OSFC Improvements - Emergency Repairs
Improvements to Aboveground Fuel Storage Tank

Forest Hills Local School District

2014 Bond Levy Projects - \$103 Million
Anderson and Turpin High Schools - Additions and Renovations
Ayer Elementary School - Addition and Renovation
Maddux Elementary School - Addition and Renovation
Mercer Elementary School - Addition and Renovation
Nagel Middle School - Addition and Renovation
Sherwood Elementary School - Addition and Renovation
Summit Elementary School - Addition and Renovation
Wilson Elementary School - New Building
Anderson High School

K-12 EDUCATION EXPERIENCE



Forest Hills Local School District Cont.

- Fire Alarm System Upgrade and Boiler Replacement
- Ayer Elementary School HVAC Upgrade Feasibility Studies
- Ayer, Maddux, Sherwood, Summit and Wilson Maddux Elementary School
 - Boiler and Fire Alarm System Replacements
- Mercer Elementary School
 - HVAC Upgrade and Fire Alarm System Replacement
- Nagel Middle School – VFD Upgrade
- Sherwood Elementary School – HVAC Upgrade
- Summit Elementary School - Fire Alarm System Replacement
- Turpin High School
 - Chiller and Cooling Tower Replacement
 - Fire Alarm and HVAC System Upgrades
 - Utility Assessments
- Wilson Elementary School – Fire Alarm System Upgrade

Global Impact STEM Academy - \$8 Million

- Phase II - Commissioning

Green Local Schools - \$24 Million

- New PK-12 - Commissioning

Great Oaks

- Live Oaks Extensive Renovation & Addition
 - Electrical Upgrade
 - Canopy Renovations
 - Water / Fire Service Upgrade

Indian Hill Exempted Village School District

- District Wide
 - Auxiliary Facilities Assessment – Athletics and Auditorium

Indian Hill Exempted Village School District Cont.

- Energy Audit and Facilities Assessment
- Energy Audit and Facilities Assessment Update
- Energy Conservation Measures
- Home of the Braves
- Server Room
- Underground Piping from Plant to Auditorium Upper Fields
- High School
 - Auditorium Addition
 - Auditorium – Replacement of AHUs
 - Auditorium – Theatrical Lighting Upgrade
 - Athletic Director's Office - HVAC Upgrade
 - Coaches Locker/Training Room – HVAC Upgrade
 - Gymnasium Air Conditioning Feasibility Study
 - Gymnasium Boys Locker Room Ventilation
 - Gymnasium Lighting Feasibility Study
 - Gymnasium Locker Room Remodeling
 - Kiln Exhaust
 - Stadium – New Field Lighting
- High School/Middle School
 - Central Plant and Piping Expansion
 - Geothermal System Design
 - Mechanical System Upgrades - Phase I
 - Underground Piping to Auditorium
- Commons Building
 - Air Conditioning Feasibility Study
 - Air Conditioning Design
- Middle School
 - AHU Replacement
 - AHU No. 6 Replacement
 - AHU No. 14 Replacement
 - AHU Nos. 33, 34, 36 Replacement
 - Chilled and Hot Water Piping Upgrade

K-12 EDUCATION EXPERIENCE



Indian Hill Exempted Village School District Cont.

- Gymnasium Air Conditioning Feasibility Study
- Gymnasium Air Conditioning Design
- HVAC Unit Replacements
- HVAC Upgrade
- Piping Repair and Insulation Replacement
- Elementary School
 - Gymnasium – LED Lighting Upgrade
 - Media Center Lighting
- Primary School
 - Auditorium – LED Lighting Upgrade
 - Boiler Replacement and VFD Upgrade
 - Chiller Replacement
 - New Generator

Lakota Local School District

- House Bill H-264
 - Assessment Report
 - Implementation of Energy Conservation
- Freedom Elementary School - Investigation of Operational Problems
- Freshman School - Library/Media Room Lighting Revisions
- Shawnee Elementary School – Review of Audio Visual Equipment

Logan Elm Local Schools - \$53 Million

- New PK-12 - Commissioning

Loveland City School District - \$5 Million

- Assistance with Grant Application - Power Up Technology Program
- Early Childhood Center Addition & Renovation
- Elementary School Addition & Renovation
- Intermediate School Addition & Renovation

Madeira City Schools - \$24 Million

- High School Addition and Renovation
- New Elementary School
- New Middle School

Mariemont City Schools

- New High School
- Bond Levy Projects - Engineering and Commissioning Services - \$41.9 Million
 - New Mariemont Junior High
 - Mariemont and Terrace Park Elementary
- Additions and Renovations
- Electric Upgrade Studies
 - Mariemont, Fairfax, and Terrace Park Elementary Schools
- Emergency Upgrade - Fairfax Elementary School
- HB 264 Design Services
- Mariemont Elementary - Boiler Incident
- Mariemont High School - Air Handling Unit Replacement
- Preventative Maintenance Program – All District Schools

Miami Trace High School - \$47.5 Million

- New High School - Commissioning
- Junior High School - HVAC System Evaluation - Commissioning

Milford Exempted Village School District - \$2 Million

- Assistance with Grant Application - Power Up Technology Program
- Immediate Electrical Changes - Main Middle and Junior High Schools
- Electrical Upgrades – Technology Program



K-12 EDUCATION EXPERIENCE



Mt. Notre Dame High School - \$5 Million

Chemistry Lab & Home Economics Renovation
Gymnasium Addition
Main Building Renovation - Computer Labs and Media Center
Master Planning
Theater Improvements - Complete Services and Programming

New Bremen Local Schools - \$20 Million

New Bremen PK-6 Elementary School - Commissioning

Notre Dame Academy

HVAC System Study & Upgrades

Purcell Marian High School

New Cavalier Athletic Complex

Oak Hills Local School District

Bridgetown Middle School - Boiler Replacement
District Wide Maintenance Service Work
J.F. Dulles Elementary School - Special Needs Classroom
Oak Hills High School - New Chiller
Oak Hills High School - Field Lighting
Server Room

Southwest Local School District - \$22 Million

Crosby Elementary School - 8 Classroom, Kitchen, & Cafeteria Addition
Miami town Elementary - 8 Classroom, Kitchen, & Cafeteria Addition
Whitewater Valley Elementary School - 8 Classroom Addition
Junior High School - 4 Classroom Addition

Junior High School - New Cafeteria
New Activity Center - Gymnasium and Auditorium
High School Addition and Renovation
New Concession Stand and Comfort Station

Talawanda School District

Middle School HVAC Study and Upgrade of HVAC Systems

Tallmadge City School District - \$42.9 Million

New Elementary School - Commissioning
New Middle School - Commissioning

Warren Local School District - \$61 Million

New PK-4 Elementary School - Commissioning
Renovation of 5-8 Middle School - Commissioning
New 9-12 High School - Commissioning

Wayne Local Schools (\$31 Million)

New PK-6 School - Commissioning

West Clermont Local School District - \$146.8 Million

New High School Complex - Commissioning
Two New PK-5 Elementary Schools - Commissioning
Renovated PK-5 Elementary School - Commissioning

Winton Woods - \$110 Million

New K-6 School - Commissioning
New 7-12 School - Commissioning

Wyoming City Schools - \$25 Million

New High School - Commissioning

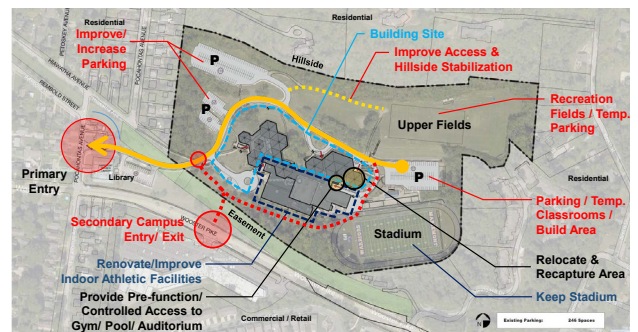
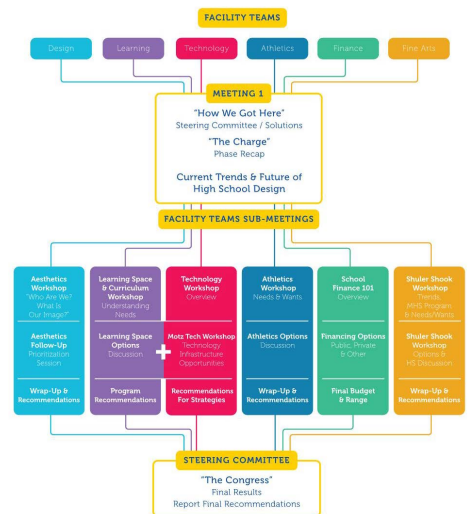


MOTZ ENGINEERING

CASE STUDY: THE NEW MARIEMONT HIGH SCHOOL

Mariemont City Schools, the high-performing school district just east of Downtown Cincinnati prides itself as a prominent piece of the historic, quaint and safe planned neighborhood. Without a major renovation since the original high school was built in 1970, the district approached its voters with a 5.75-mill permanent improvements levy in support of a partial replacement and major renovation project to their high school.

After the successful passage of the issue at an impressive 54% of community support, design began immediately. The work on the campus includes construction and renovation of existing facilities for academics, athletics and performing arts. The project will consist of a complete replacement of the academic wing with a renovation of the remainder of the facility. Specifically, existing classrooms will be replaced with new classrooms, new laboratories and collaboration spaces, and new secure entrances. The existing auditorium, gymnasiums, and performing arts space will be renovated, and athletics will receive infrastructure repairs and replacements. The mechanical, electrical, plumbing, fire protection, and technology systems throughout the entire facility will be replaced, while the entire facility will also receive new windows and roofs, new and renovated restroom facilities, new ADA accessibility features, updated security features, and site and access improvements.



MOTZ ENGINEERING

MARIEMONT HIGH SCHOOL



As a part of a rigorous two-year community engagement process, the Mariemont Community formed the following teams to identify the strategic needs of the Mariemont City School District with a focus on their High School Campus:

Design Team - Aesthetics - Priorities/Options
Learning Team - Space and Curriculum Options
Technology Team - Infrastructure & System Opportunities (Motz led)
Athletics Team
Finance Team - School Finance IOI - Options
Fine Arts Team
Green Team - Sustainability/LEED (Motz led)

Working with the local architect and a specialty consultant for fine arts/theater, Motz Engineering led the Technology Team and the Green (Sustainability) Team. The Technology Team interfaced regularly with the Learning Team given the strong correlation between a robust technology component and 21st Century Learning. One such combined Learning/Technology Team Meeting involved a field trip to Xavier University where the teams spent an evening touring a newly renovated classroom building as well as gaining insight from Xavier Professors and facility personnel.

The Green/Sustainability Team consisting of architects, engineers, and innovative thinkers from the community focused on energy and operations goals relating to this Campus. The Team met regularly with the District Treasurer, Business Manager, and Facility personnel to identify historical trends and to formulate new goals and objectives for a more energy efficient and low maintenance campus.

The focus of the Technology Team included the following:

Networks	Electronic Signage
Collaboration Tools	Virtual Reality (VR)
Internet - Wifi	Computer Charging Carts
Classroom A/V	



MOTZ ENGINEERING

MARIEMONT HIGH SCHOOL



Using input from the Technology Team, Motz Engineering designed:

- A robust infrastructure providing flexibility for the future Wi-fi coverage across the entire campus
- A modern STEM lab
- Remote collaboration - telepresence
- Flexible learning environments with multiple monitors and easily-configured furniture groupings
- Immersive and active learning capabilities
- Maximized collaboration spaces

With feedback from the Green Team, the following features were integrated into the mechanical and electrical design:

- High efficiency boilers
- Variable speed energy efficient chiller
- Air-handling units with integral energy recovery
- Robust digital control and automation system
- Day-lighting and natural lighting
- LED lighting
- Occupancy/vacancy sensors to control the lighting and HVAC systems
- Low flow plumbing features

Motz Engineering was honored to be a trusted partner during this extensive community engagement process as well as the resulting engineering design effort. The insights learned and the goals formulated with this holistic team approach provided a great foundation as Motz Engineering began the MEP design work once this historic bond levy was passed.



MOTZ ENGINEERING



MOTZ ENGINEERING

CLIENT REFERENCES



Chillicothe City School District
Michael T. Mendenhall
T: 740-253-1620
E: mendenhallmcs@gmail.com

Indian Hill Exempted Village School District
Mick Davis
Director of Facilities
T: 513-212-4513
E: mick.davis@ih.k12.oh.us



Mariemont City Schools
Lance Hollander
T: 513-272-7606
E: LHollander@mariemontschools.org

Winton Woods City Schools
Steve Denny
T: 513-619-2400
E: denny.steve@wintonwoods.org

West Clermont Local School District
Ed Dyer
T: 513-615-4659
E: dyer_e@westcler.org



Xavier University
Robert M. Sheeran
T: 513-745-2072
E: sheeran@xavier.edu

Elder High School
Doug Guenther
T: 513-921-3408
E: guenthererds@elderhs.net



Paint Valley Local Schools
Evan Keaton
T: 740-634-2826 x 14103
E: evan.keaton@pvlsd.org



Resources and Communication:

Our team is experienced with working on K-12 programs and can provide appropriate and timely interaction as needed with school-based staff to communicate any coordination or access needs to support the project. All managers and engineers will be available by phone, email or virtual meeting setting to provide prompt responses. We also provide our staff project specific briefings so that our entire team engage in your projects will understand if there are topics or concerns on specific project sites.

Workload

Our team is committed to serve Yellow Springs Schools. We are perfectly organized to guarantee our project team's availability immediately upon our selection. We have the proposed staff available to begin work immediately upon selection and can assign more personnel as the project develops. Key team members who would be involved in the initial phase are ready to start immediately. Motz Engineering concentrates its staff and efforts on a limited number of projects rather than over committing to multiple projects. We have the capacity and financial capability to take on your projects.

Subcontractors

Motz Engineering is pleased to bring **THP Limited** on our team for any Structural Engineering consultant that may be needed during the course of this project. THP and Motz have an over **50 year working relationship** that spans dozens of projects listed in the Work History portion of these qualifications.

State + Local Laws / Drug-Free Workplace

Motz Engineering is proud to be celebrating our 86th year of continuous business, dedicated to compliance in compliance with federal, state and local laws, rules and regulations.

While Motz Engineering is not officially a member of Ohio BWC's Drug-Free Safety Program, our own Drug & Alcohol-Free Workplace guidelines and expectations are clearly communicated to all employees as an integral aspect of their employment.

PREVIOUS FACILITY PLAN EXAMPLES



MOTZ ENGINEERING

With the permission of the clients, our team is pleased to present 4 examples of facilities plans completed by our team for a similar scope of work. Please access these plans by typing in the following link or clicking on the Dropbox Icon in the PDF.

https://www.dropbox.com/sh/5tnco0u63oj7p9i/AABshfATg79FB_tq8ijEUNPia?dl=0



MOTZ ENGINEERING