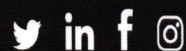




HENSEL PHELPS

Plan. Build. Manage.



Delivering

EXCELLENCE

in all we do.



OUR VALUES

OWNERSHIP

We take responsibility. As an employee-owned company, we have a stake in everything we do.

INTEGRITY

We work with integrity and are committed to honesty, building trust and doing the right thing. We provide a workplace free from hazards.

BUILDER

We are builders. We safely self-perform our work while building teams, people, partnerships and legacies.

DIVERSITY

We embrace diversity. From our people, to our partners, to our projects—these differences strengthen our teams and our business.

COMMUNITY

We support our community. We care for our employees, colleagues and neighbors like a family.

APPLY ONLINE AT **[HENSELPHELPS.COM/CAREERS](https://www.henselphelps.com/careers)**

Hensel Phelps is an Equal Opportunity and Affirmative Action Employer. Hensel Phelps shall not discriminate against any employee or applicant for employment on the basis of race, color, religion, including performance of religious obligations, age, weight, height, sex, sexual orientation, gender identity or transgender status, marital or domestic partner status, ancestry, national origin, disability or AIDS/HIV status, or protected veteran status in regard to any position for which the employee or applicant for employment is qualified, or because of association with members of classes protected in this policy or any other characteristic protected by federal, state, or local law.



HENSEL PHELPS

Plan. Build. Manage.

1,000+ EMPLOYEE OWNERS

EST. 1937

SUSTAINABILITY

LEED Accredited Professionals **400+**

255+ Sustainable Projects

Engineering News-Record
TOP Green Builder



**ZEROACCIDENT
SAFETYCULTURE**



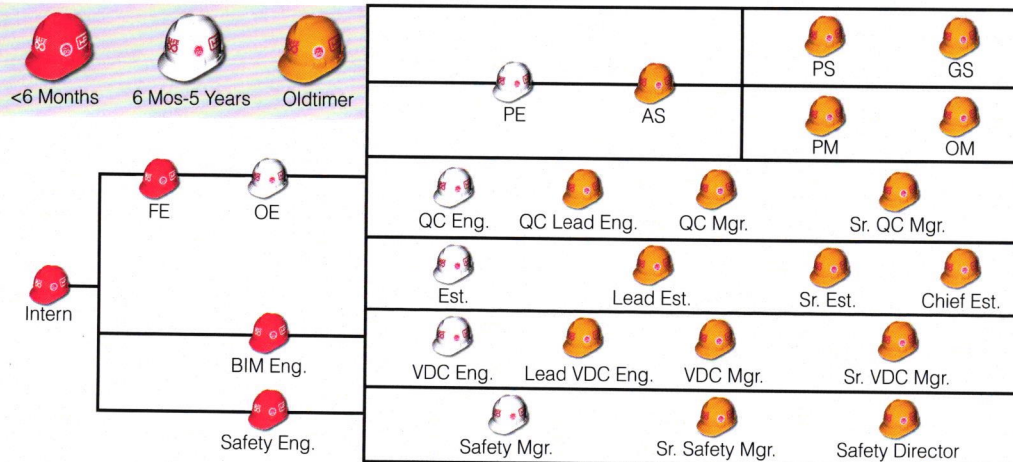
INTERNSHIPS

IN 2021 WE HIRED

256

INTERNS.

\$1M ANNUAL CHARITABLE CONTRIBUTIONS & 100k SERVICE HOURS



* Above are options showing sample career paths. Each individual's progression may vary.

Retirement

Qualified Retirement Plan
Last year Hensel Phelps contributed
15% of each employee's base salary.

Healthcare

Last year Hensel Phelps paid
\$44.5M for employees and their
families' health coverage.

Markets

Commercial, Aviation, Development,
Healthcare, Education, Hospitality,
Justice, Public, Mission Critical,
Renewable, Facility Life Solutions

236 PROJECTS IN PROCESS

\$5.2B+ PROJECTED REVENUE