

# King/Weeks

4201 Indiana Ave, Kansas City, MO 64130



## Historical Brief

**Year Built:**

1968

**Historic Designation:**

Not Determined

## Site Overview

**Acreage:**

20 acres

**Square Footage:**

78,016/128,370 sq. ft

**Number of Floors:**

3 floors

**Neighborhood:**

Oak Park

**Zoning:**

B1-1, B3-2, M1-5, R-2.5

**Council District:**

3rd

## Site Details

- Closed in 2010 (Weeks) /2014 (King)
- 2 Auditoriums/ Gymnasiums
- Shared Cafeteria
- Floor/building plans upon request
- New Markets Tax Credit: Eligible
- CCED Sales Tax: Eligible
- Demolition candidate

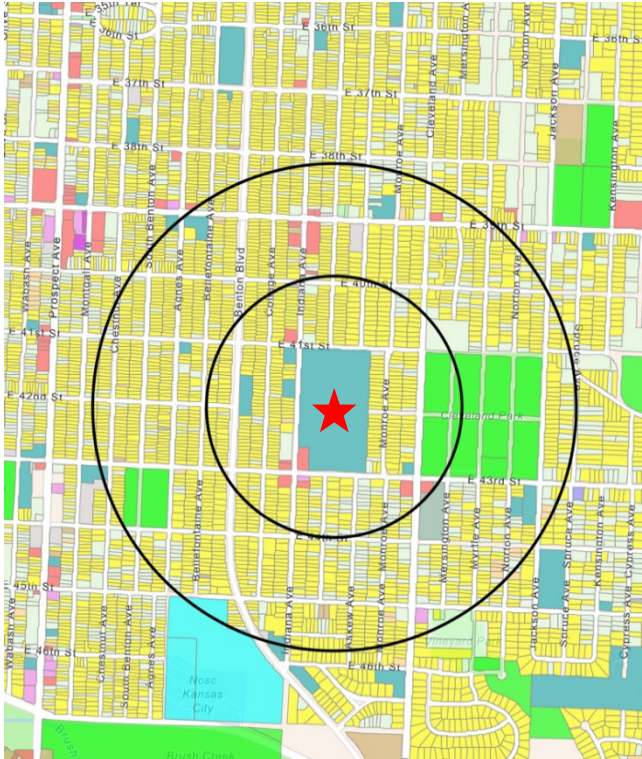
## Annual Operating Cost

(2020-21)

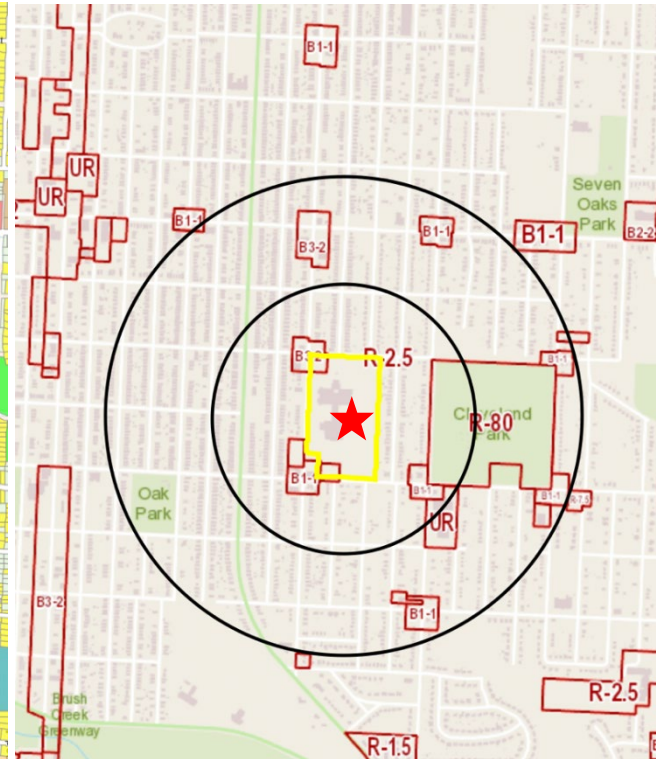
**Utilities:** \$28,664

**Grounds:** \$17,600

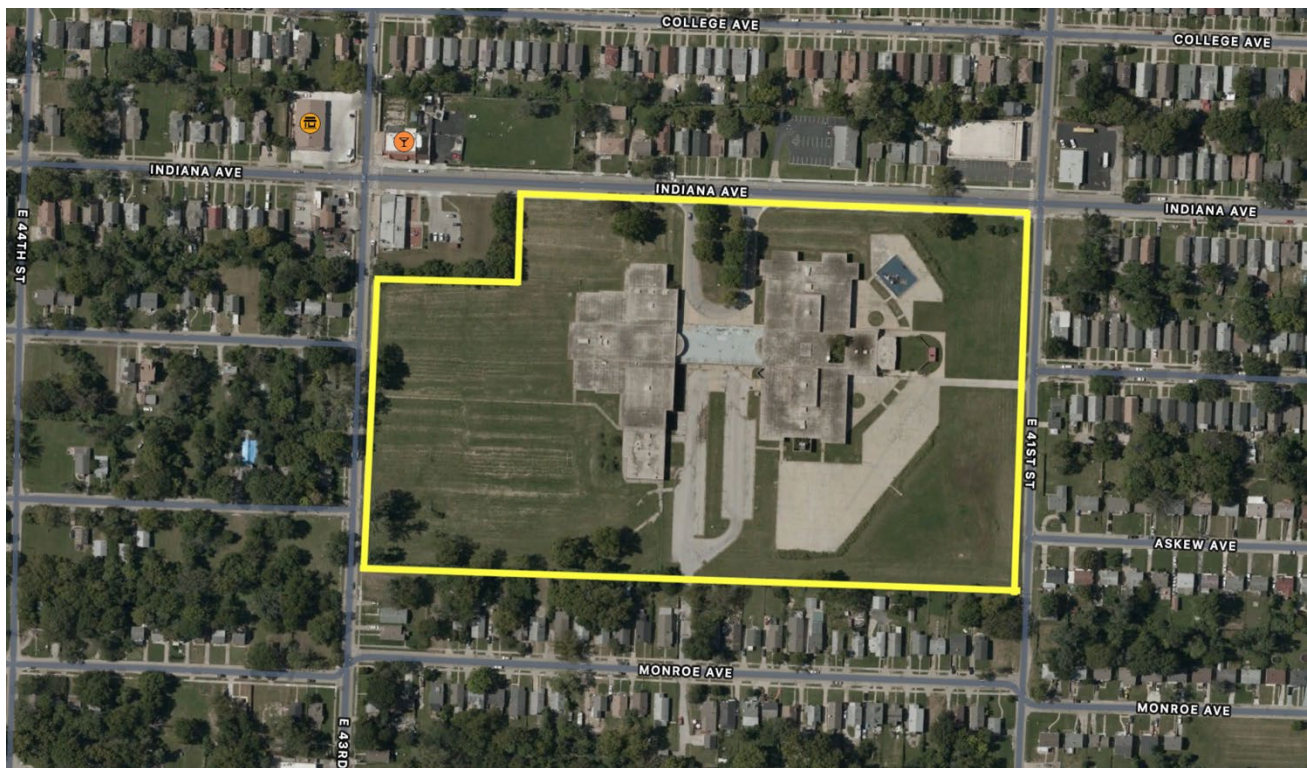




**Current Land Use Map**



**Zoning Map**



**Aerial View**



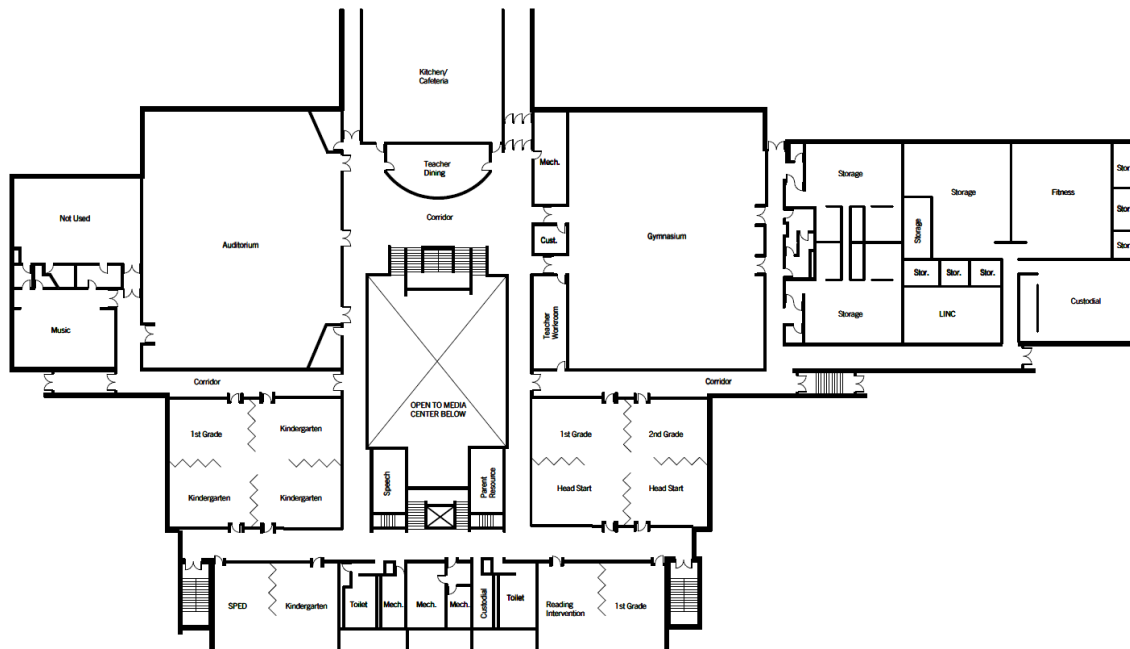


## FLOOR PLANS

King- Level 1

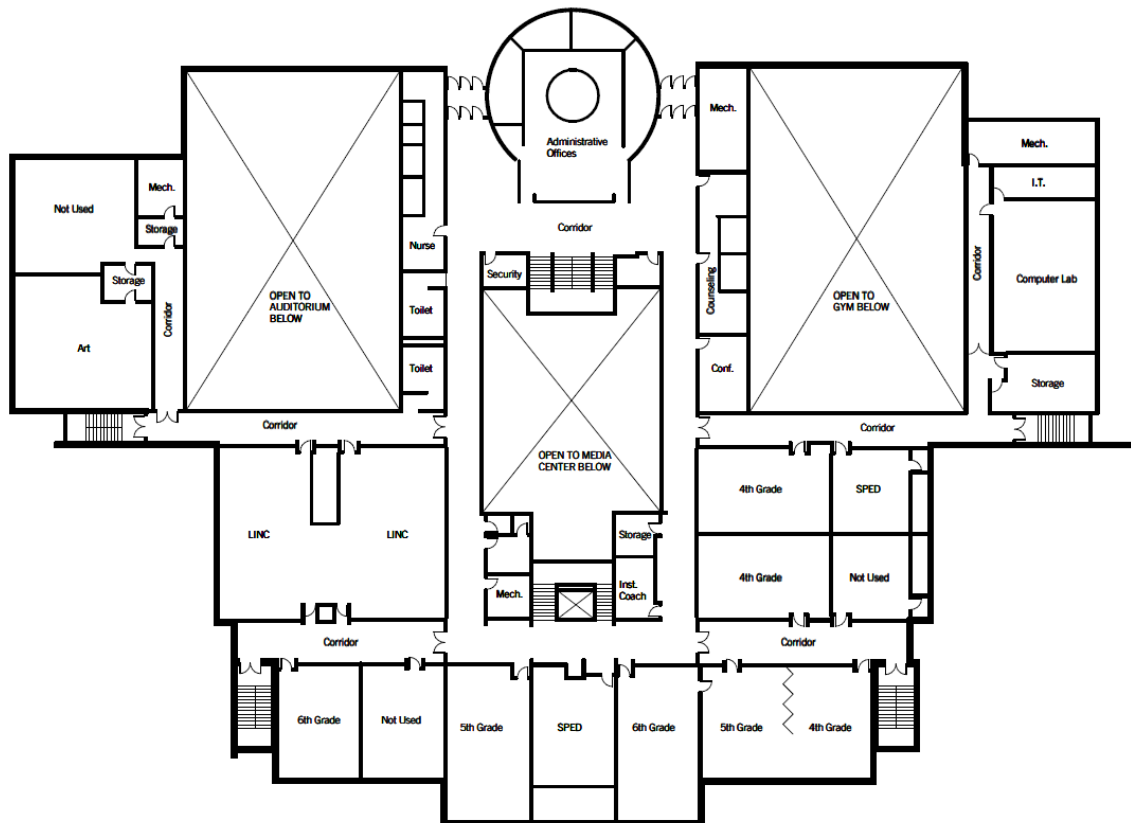


King- Level 2



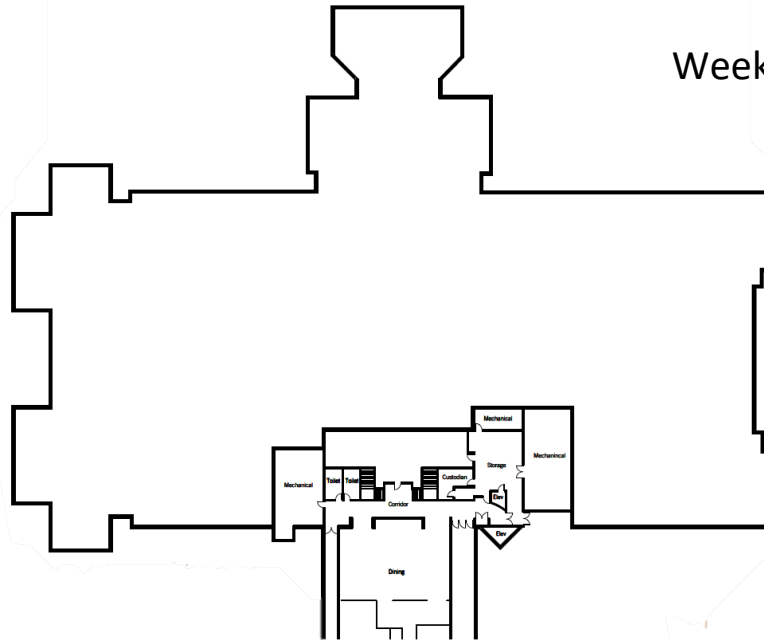
## FLOOR PLANS

### King- Level 3



## FLOOR PLANS

Weeks - Level 1



Weeks - Level 2

