

Leigh School Improvement Plan





Mission and Vision

Our Mission

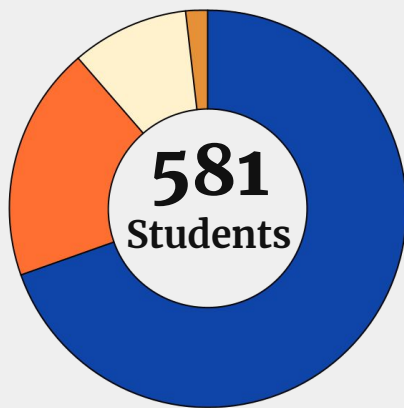
Inspiring Educational Excellence in a Nurturing Environment.

Our Vision

Our students are the focus of all we do at Norridge School District 80. The Student centered classroom will promote an independent, collaborative, and motivated learning environment. Our Administrators, Teachers, and Staff will set high standards in a safe, nurturing, and positive school environment which will prepare our graduates to take on their future with confidence.

Our Students

BY THE NUMBERS



- White- 69.5%
- Hispanic- 19.1%
- Asian- 9.5%
- Two or More- 1.8%



30%
Free and Reduced lunch
status



26%
English Language Learners



12%
Students with an IEP

Strengths

Supportive Environment

| Measures | Performance ↓ | Respondent |
|--------------------------------|----------------|------------|
| Peer Support for Academic Work | 99 Most | Student |
| Student-Teacher Trust | 97 Most | Student |
| Academic Personalism | 92 Most | Student |

What is Tiger Pride?

Goal= To create a positive and productive sense of community for the entire Leigh School family- students, families and staff.

- Be safe.
- Be respectful.
- Be responsible.

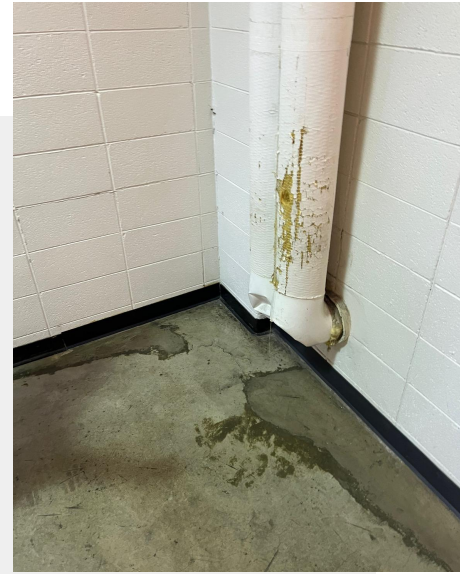
Strengths



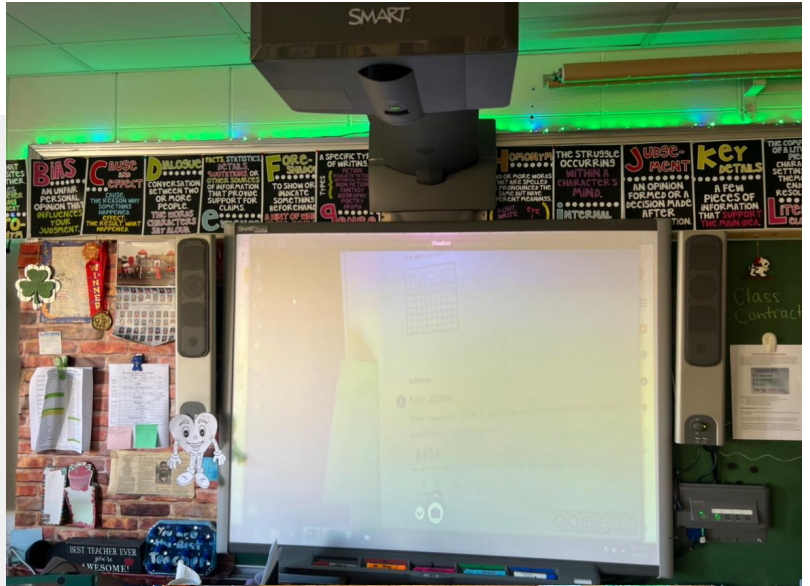
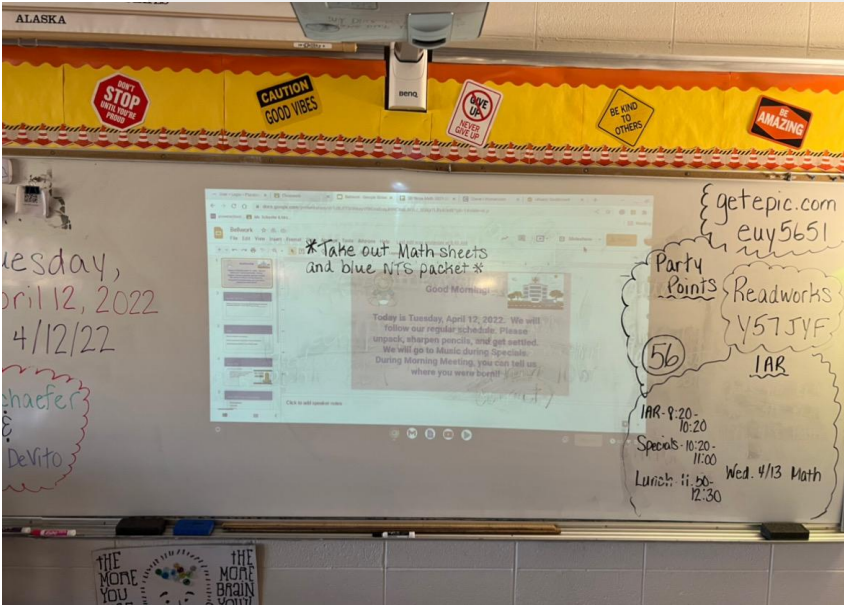
Strengths

- Providing students opportunities to receive a well-rounded education;
 - Daily specials (Art, Music, Media, P.E.)
 - After school enrichment programs
 - Second Step curriculum for social emotional learning
 - Summer offerings currently being provided in response to COVID learning loss.

Challenges...



Challenges...



Data Analysis

Table 1: Student Attendance and Demographic Information

| | 17-18 SY | 18-19 SY | 19-20 SY | 20-21 SY |
|---------------------|----------|----------|----------|----------|
| | % | % | % | % |
| Attendance | 95.6 | 95.7 | 96.6 | 97.6 |
| Chronic Absenteeism | 7 | 7 | 3 | 2 |
| Mobility Rate | 3 | 4 | 2 | 3 |
| White | 75.6 | 74.2 | 72.2 | 69.5 |
| Black | 0.3 | 0.3 | 0.2 | 0 |
| Hispanic | 16.6 | 17.1 | 16.8 | 19.1 |
| Asian | 6.7 | 6.9 | 9 | 9.5 |
| American Indian | 0.3 | 0.5 | 0.2 | 0 |
| Two or More | 0.5 | 1 | 1.7 | 1.8 |

Table 2: Student Enrollment Data

| | 17-18 SY | 18-19 SY | 19-20 SY | 20-21 SY |
|-------------------|----------|----------|----------|----------|
| | # | # | # | # |
| School Population | 614 | 609 | 543 | 545 |
| Pre-school | 19 | 24 | 14 | 22 |
| Kindergarten | 102 | 102 | 95 | 99 |
| Grade 1 | 120 | 108 | 96 | 96 |
| Grade 2 | 111 | 120 | 108 | 99 |
| Grade 3 | 138 | 115 | 118 | 109 |
| Grade 4 | 124 | 140 | 112 | 120 |

Table 3: Student Demographics Receiving ELL Services

| | # | % | # | % | # | % |
|--------------------------------------|-----|----|-----|--------|-----|--------|
| Total Enrollment | 614 | | 609 | | 543 | |
| Total English Language Limited (ELL) | 129 | 21 | 146 | 24 | 130 | 2 |
| Spanish | 14 | 11 | 17 | 12.32% | 13 | 10 |
| Polish | 60 | 47 | 65 | 47.10% | 16 | 1 |
| Ukrainian | 23 | 18 | 17 | 12.32% | 60 | 49.18% |

Table 10: 3rd Grade MAP-Reading Data

| 3rd Grade Reading Mean RIT | Fall 17-18 | Winter 17-18 | Spring 17-18 | Fall 18-19 | Winter 18-19 | Spring 18-19 | Fall 19-20 | Winter 19-20 | Spring 19-20 | Fall 20-21 | Winter 20-21 | Spring 20-21 |
|----------------------------|------------|--------------|--------------|------------|--------------|--------------|------------|--------------|--------------|------------|--------------|--------------|
| School | 190.9 | 197.4 | 201.9 | 186.5 | 195.1 | 200 | 194.7 | 199.7 | 198.1 | 197.12 | 197.12 | 203 |
| Norm | 186.62 | 193.9 | 197.12 | 186.62 | 193.9 | 197.12 | 186.62 | 193.9 | 193.9 | 193.9 | 193.9 | 197.12 |
| +/- Norm | 4.28 | 3.5 | 4.78 | -0.12 | 1.2 | 2.88 | 8.08 | 5.8 | 4.2 | 5.88 | | |

| 3rd Grade Reading Making Expected Gains | Winter 2016-2017 to Winter 17-18 | Winter 17-18 to Winter 18-19 | Winter 18-19 to Winter 19-20 | Winter 19-20 to Winter 20-21 |
|---|----------------------------------|------------------------------|------------------------------|------------------------------|
| | 46% | 43% | 68% | 47% |

| 3rd Grade Reading Mean by Instructional Area | Norm (based on 2020 Norms) | Overall Mean RIT | At/Below Norm | Literary Text Key Ideas and Details | Literary Text Language, Craft and Structure | Informational Text: Key Ideas and Details | Information Text: Language, Craft and Structure | Vocabulary: Acquisition and Use |
|--|----------------------------|------------------|---------------|-------------------------------------|---|---|---|---------------------------------|
| Fall 17-18 | 186.62 | 190.9 | 4.28 | 192 | 190.7 | 191.7 | 189.3 | 190.9 |
| Winter 17-18 | 193.9 | 197.4 | 3.5 | 197.9 | 196.7 | 198.4 | 196.5 | 198 |
| Spring 17-18 | 197.12 | 201.9 | 4.78 | 202.3 | 200.7 | 201.5 | 202.7 | 202.8 |
| Fall 18-19 | 186.62 | 186.5 | -0.12 | 187 | 185.6 | 186.4 | 186 | 187.7 |
| Winter 18-19 | 193.9 | 195.1 | 1.2 | 196 | 193.7 | 194.7 | 195 | 196.1 |
| Spring 18-19 | 197.12 | 200 | 2.88 | 200.5 | 198.2 | 199.2 | 200.6 | 201.1 |
| Fall 19-20 | 186.62 | 194.7 | 8.08 | 196.3 | 191.8 | 195.3 | 195.8 | 194.1 |
| Winter 19-20 | 193.9 | 199.7 | 5.8 | 201.1 | 198.7 | 199.2 | 199.9 | 199.7 |
| Winter 20-21 | 193.9 | 198.1 | 4.2 | 200.1 | 196.9 | 198.6 | 199.1 | 195.6 |
| Spring 20-21 | 197.12 | 203 | 5.88 | 203.7 | 201.5 | 203.6 | 204.2 | 202.6 |
| Fall 21-22 ** | 186.62 | 187.8 | 1.18 | 187 | | 188 | | 188 |

** NWEA adjusted from a 5 instructional area focus to a 3 instructional area focus in July 2021

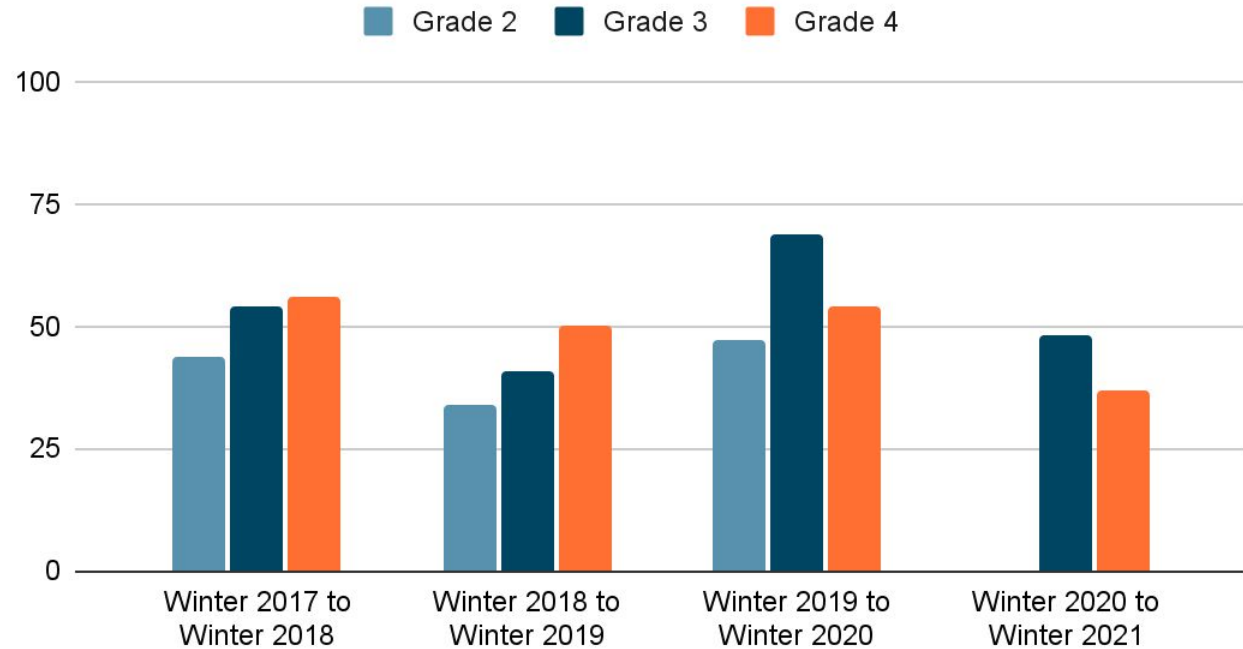
Above the Mean RIT
Below the Mean RIT

| 2nd Grade Math Making Expected Gains | Winter 2016-2017 to Winter 17-18 | Winter 17-18 to Winter 18-19 | Winter 18-19 to Winter 19-20 |
|--------------------------------------|----------------------------------|------------------------------|------------------------------|
| | 44% | 34% | 47% |

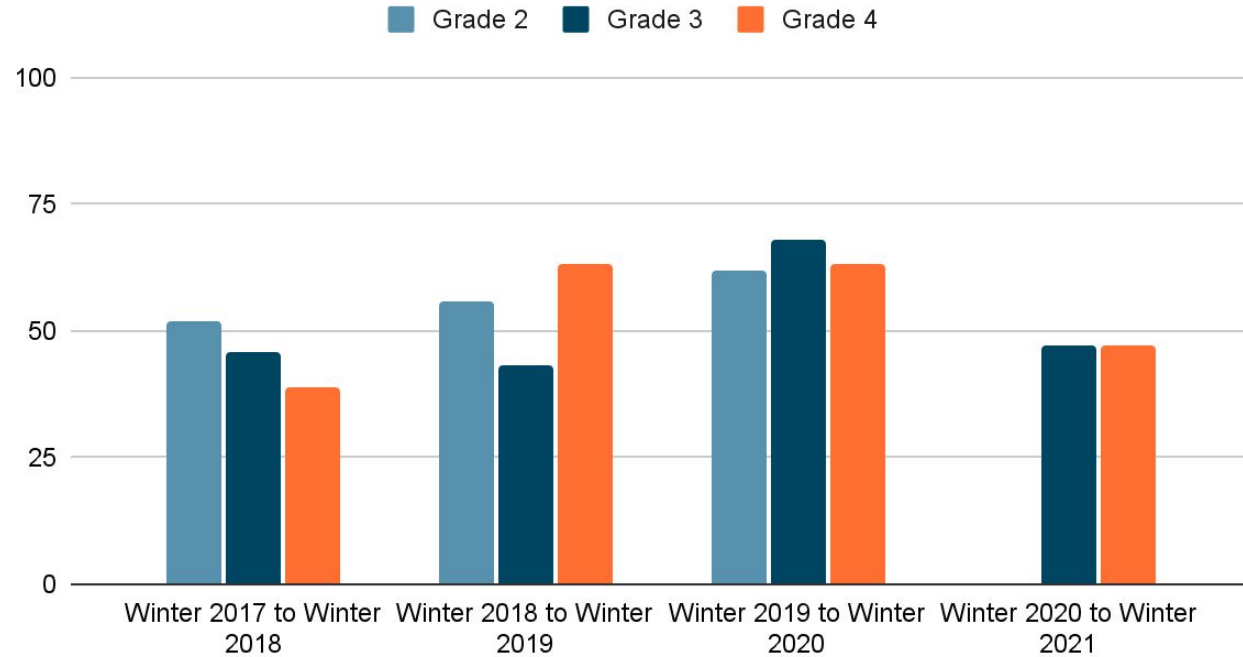
| 2nd Grade Math Mean by Instructional Area | Norm (based on 2020 Norms) | Overall Mean RIT | At/Below Norm | Operations and Algebraic Thinking | Numbers and Operations | Measurement and Data |
|---|----------------------------|------------------|---------------|-----------------------------------|------------------------|----------------------|
| Fall 17-18 | 175.04 | 177.3 | 2.26 | 176.5 | 178.3 | 176.3 |
| Winter 17-18 | 184.07 | 185.2 | 1.13 | 185.2 | 186.3 | 184.3 |
| Spring 17-18 | 189.42 | 190.3 | 0.88 | 190.3 | 190.5 | 191.5 |
| Fall 18-19 | 175.04 | 176.2 | 1.16 | 176.1 | 175.9 | 174.5 |
| Winter 18-19 | 184.07 | 185.2 | 1.13 | 186 | 185.4 | 183 |
| Spring 18-19 | 189.42 | 193.9 | 4.48 | 194.1 | 192.9 | 19 |
| Fall 19-20 | 175.04 | 177.4 | 2.36 | 176 | 174.5 | |
| Winter 19-20 | 184.07 | 184.9 | 0.83 | 185.3 | 183.3 | |
| Winter 20-21 | 184.07 | 186.4 | 2.33 | 182 | 185.6 | |
| Spring 20-21 | 189.42 | 189.8 | 0.38 | 188.1 | 188.8 | |
| Fall 21-22 | 175.04 | 172 | -3.04 | 173 | 170 | |

Above the Mean RIT
Below the Mean RIT

Percentage of Students Making Expected Gains (Math)



Percentage of Students Making Expected Gains (Reading)



Problem Statements

Problem Statement 1

Over a three year period, we have averaged 46% of our students making expected gains in Math. In our most recent MAP Math data from Winter 19-20 to Winter 20-21, 43% of our students made expected gains.

Problem Statement 2

Over a three year period, we have averaged 54% of our students making expected gains in Reading. In our most recent MAP Reading data from Winter 19-20 to Winter 20-21, 47% of our students made expected gains.

Problem Statement 3

In the fall of 2021, 15% of students were flagged as having some or more risk on the Social, Academic and Emotional Behavior Risk Screener.



Goal 1: Math

60% of our students will make expected gains in MAP Math data from Winter 21-22 to Winter 22-23.



Goal 2: ELA

60% of our students will make expected gains in MAP Math data from Winter 21-22 to Winter 22-23.



Goal 3: SEL

Each October, February and May, 90% of students who are identified as needing additional support will be accessing relevant evidence based interventions to support their SEL growth.

Each month 70% of students participating in evidence based tier 2 or tier 3 SEL interventions will be on track to meet their individual goal.

**A GOAL
WITHOUT A PLAN
IS JUST A WISH**



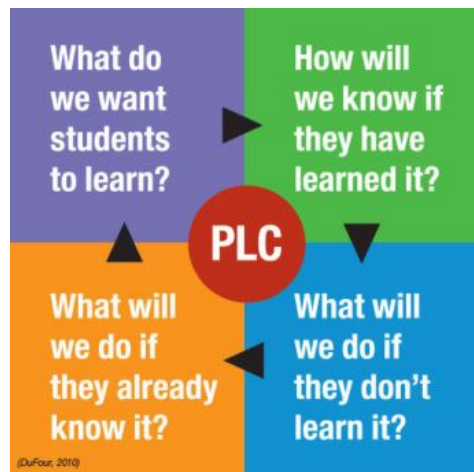
PREVENTION
for all Students

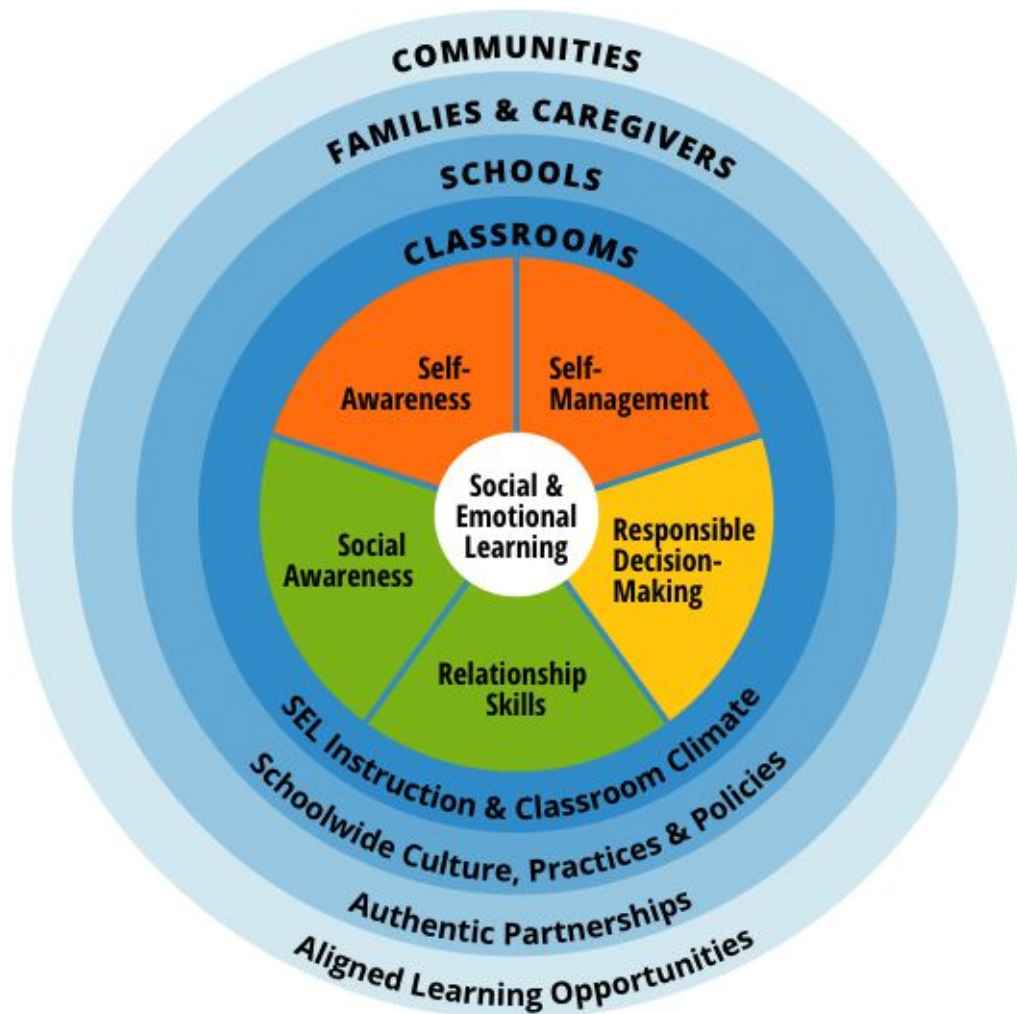
ENRICHMENT
for all Students

INTERVENTION
for all Students

Multi Tiered Systems of Support (MTSS)

All Children | Whole Child





Monitoring our plan

An ongoing agenda item at each of our building level leadership team meetings will focus around our school improvement plan and updating the status of our action items. This will help to ensure collective accountability.

“What gets measured, gets improved.”