

PAUL MELLON ARTS CENTER

50 Years of Artistic Excellence at Choate Rosemary Hall

Today, our beloved PMAC serves as the hub of the arts on campus: a space for education, expression, and entertainment. For the past 50 years, the arts program of Choate Rosemary Hall has been invigorated and expanded all due to the establishment and presence of this arts center. From annual celebrations such as Convocation and Reunion to theatrical productions, artists' exhibits, symphonies, and more, the PMAC has served as home to these events and memories.

1967

Paul Mellon C'25 makes a \$2,000,000 gift for the construction of a performing arts center. The Arts, which had been previously stretched across more than 20 make-shift spaces on The Choate School campus, will now all live under one roof.

Paul Mellon, '25, Gives Performing Arts Center

A gift of \$2 million from Paul Mellon was announced today by the Board of Trustees of Choate Rosemary Hall, the Choate School's governing body. The gift will enable the school to construct a new performing arts center on the Choate campus.

The Board of Trustees will identify the site for the new center and will have the center built and equipped by the Choate School's organization. The gift will be used to cover the cost of construction and to provide for the maintenance and operation of the center.

The Board of Trustees will identify the site for the new center and will have the center built and equipped by the Choate School's organization. The gift will be used to cover the cost of construction and to provide for the maintenance and operation of the center.

Mr. Mellon speaks in Chapel—Alumni Day, 1966.

Mr. Mellon speaks in Chapel—Alumni Day, 1966.



1968

Headmaster Seymour St. John announces world-renowned architect I.M. Pei will design the new Arts Center. Plans are submitted for a concrete and glass structure on the site of the old Choate Model Dairy, originally Rosemary Farm.



1972

The four-day-long opening celebration of the Paul Mellon Arts Center takes place May 12-15. Events include: the Boston Pops Orchestra conducted by Arthur Fiedler, a student production of *Zoo Story*, Shakespeare's *Measure for Measure*, dance recitals, and student exhibitions of pottery, weaving, painting, and film. The new PMAC, meant to serve as a gateway between the two campuses of Rosemary Hall and The Choate School, will lay claim to thousands of budding and professional artists in the years to come.

1972

Production of *The Canterbury Tales*.



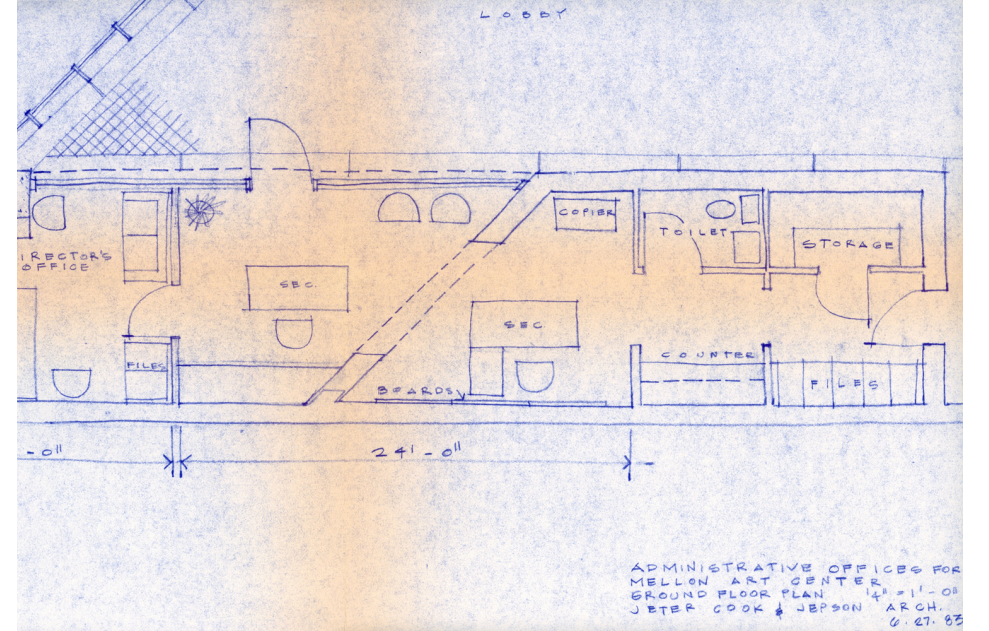
1979

Edward Albee C'46 arrives with his touring company for *Albee Directs Albee*. Albee leaves his mark on the PMAC, literally, by spray-painting his name on the wall of the Scene Shop.



1983

Director of the Physical Plant, Phil Horan, requests from I.M. Pei and Partners for a "minor modification to the lounge area...because of inevitable changes in usage of new buildings." Jeter, Cook & Jepson Architects draw up plans for the East Wing to remove the snack bar area on the first floor and add administrative offices for the Director of the PMAC, secretary, and ticket sales.



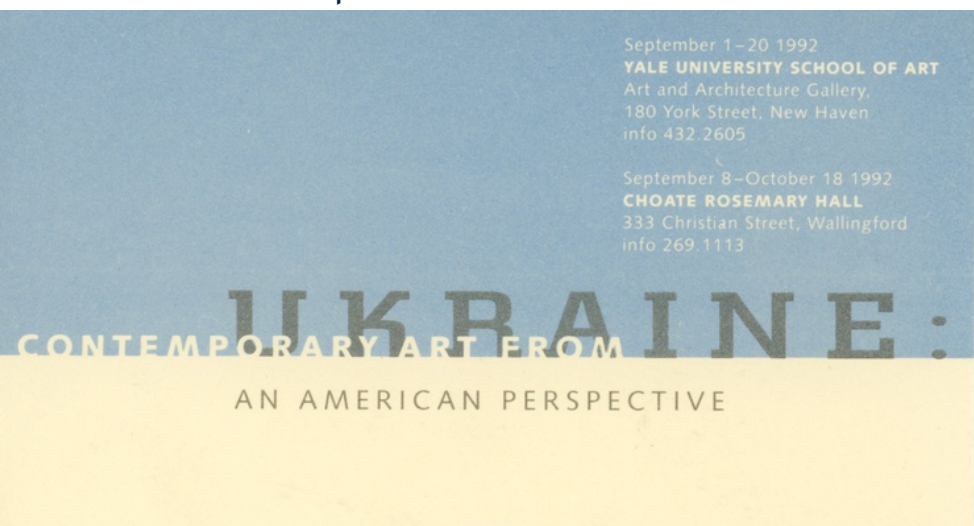
1991

Production of *The Me Nobody Knows*.



1992

The first foreign art exhibit is held at the PMAC after Reginald Bradford, instructor of Fine Arts, travels to Ukraine to select 135 art works by 95 diverse artists. *Contemporary Art From Ukraine: An American Perspective* is a joint exhibition between Choate Rosemary Hall and Yale University. At the opening reception, the world-renown Leontovych String Quartet from Kiev performs in the Main Theater.



1996-97

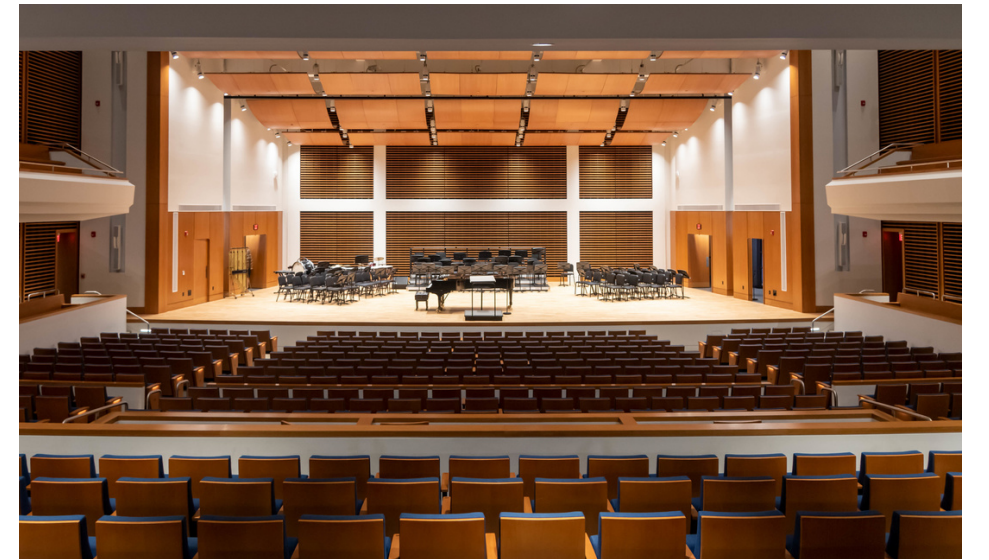
The PMAC celebrates its 25th Anniversary with productions of *The Nutcracker* by the New Haven Ballet & Wallingford Symphony Orchestra, *Curiouser and Curiouser* by the National Theatre of The Deaf, a performance by the Vienna Boys Choir, and selected "Reprises" of alumni's previous performances.

2001

A first of its kind in the independent school world, the Arts Concentration program launches in the fall with five students focusing on theater, visual arts, and music. The mission of the Arts Concentration program is to allow students with exceptional talent in the visual or performing arts to develop within the context of a rigorous academic program.

2019

Ann & George '72 Colony Hall opens next to the PMAC as a 51,761 square foot dedicated space for dance and music. Colony Hall, conceived by architect Rober A.M. Stern, takes its design lead from the PMAC.



2020-21

The PMAC adjusts to COVID-19 safety guidelines through both virtual performances and exhibits and outdoor and socially distanced productions.



2022

The PMAC remains the center of the Arts experience for students today. Productions and exhibits resumed much to the excitement of the entire community.

