



**Urban Neighborhood
Initiative**

Partners growing Kansas City's Core

*Kansas City Public Schools Public Meeting No. 2 KCNA Building Repurpose
May 23, 2022*

URBAN NEIGHBORHOOD INITIATIVE (UNI)

Implementing Purpose Built Communities Initiative
(PBC) – Wendell Phillips Neighborhood

PBC Components:

- 1) Quality Mixed Income Housing
- 2) Community Wellness
- 3) Quality Education Pipeline
- 4) Community Quarterback (UNI)



URBAN NEIGHBORHOOD INITIATIVE (UNI)

Development Context Map



URBAN NEIGHBORHOOD INITIATIVE (UNI)

Conceptual Rendering



URBAN NEIGHBORHOOD INITIATIVE (UNI)

Organization and Program Presentations

- Urban Neighborhood Initiative (Youth & Community Impact Programs)
- iSTEAMkc (Gem Cultural & Education Center)
- The Prospect KC & Cafe
- Operation Breakthrough (Early Learning)



URBAN NEIGHBORHOOD INITIATIVE (UNI)

Community Benefit



URBAN NEIGHBORHOOD INITIATIVE

- ▶ Summer Authors Program (Write Brain)
 - ▶ Youth grades 3-5
 - ▶ Six-week writer's workshop
 - ▶ Write, illustrate, & publish their book
- ▶ Policy & Advocacy Collective (PAC)
 - ▶ High school youth
 - ▶ Seven-week collective around policy
 - ▶ Guest speakers
 - ▶ Present policy to Mayor Q



URBAN NEIGHBOHOOD INITIATIVE

- ▶ STEAM Programming
- ▶ Arts
- ▶ Dance
- ▶ Workforce Development
- ▶ Community Trainings



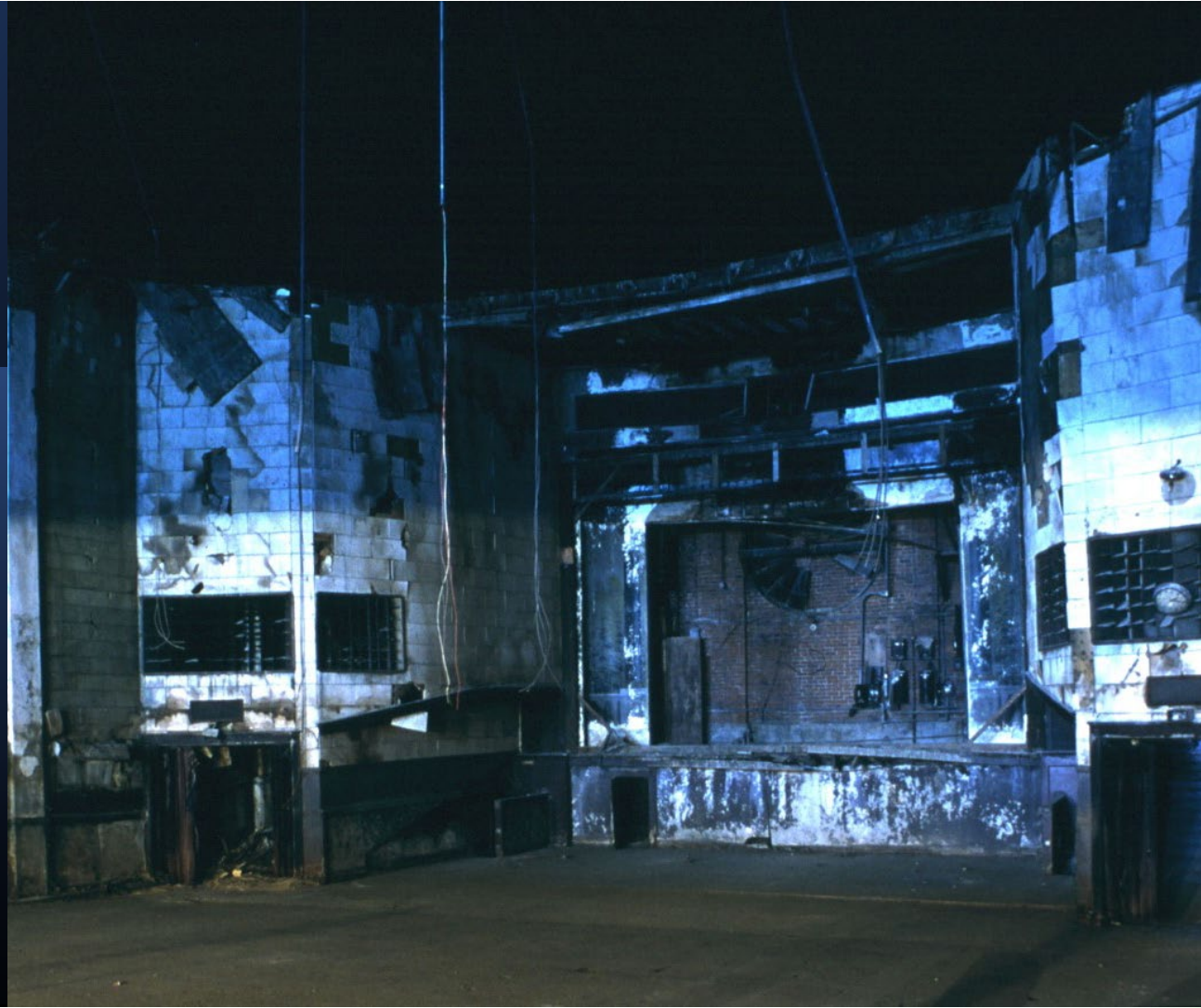
URBAN NEIGHBORHOOD INITIATIVE (UNI)

Community Benefit

iSTEAMK



Our story
begins....



The
Gem.....under
construction







Podcast Studio








New Headquarters for iSTEAMkc





Media equipment for student use

PRODUCTION _____

DIRECTOR _____

CAMERA _____

SCENE _____

TAKE _____

iSTEAMkc Partners to Date

Black Repertory
Theater

R.A.O.M. Sound &
Video Recording
Studio

Hollywood Animation
School

Seguna Talent Agency

Byrd Fleming
Drumming

KC Scholars

We Code KC

William Jewell
College: Educational
Programming

URBAN NEIGHBORHOOD INITIATIVE (UNI)

Community Benefit





Who We Are

The Prospect KC is a non-profit organization that specializes in transforming our community by using food as the means of transformation.

The Prospect KC Area of Focus

Food Access

- grocery store and a twice-weekly local farmer's market that increases access to healthy, whole foods on Kansas City's eastside.

Nutritional Literacy

- offered in-person, as well as virtually using state-of-the-art, innovative QR codes, these education sessions are accessible to everyone, expanding the positive impact of good nutrition throughout the community

Workforce Development

- 16-week Workforce Development Program provides pre-apprenticeship training, hands-on apprenticeships, and gainful employment opportunities for people living in poverty.

The Prospect KC Mission



The Prospect's mission is to empower people and communities through food-based solutions that support the needs of the whole person, giving them the ability to effect lasting change in their community



Using food as the vehicle, The Prospect's nonprofit social enterprise increases access to healthy food, provides education to help people eat healthy, and feeds community members who struggle with food insecurity



The driving force behind this is the organization's workforce development initiative, which is an innovative integration of wraparound support services with classroom education, job training, apprenticeships, employment, and entrepreneurship opportunities. The Prospect's programs do not simply offer a "band-aid," instead they are designed to address the root cause of generational poverty, giving individuals, families, and communities the chance to generate the changes they wish to see in their lives.



The Prospect's programs do not simply offer a "band-aid," instead they are designed to address the root cause of generational poverty, giving individuals, families, and communities the chance to generate the changes they wish to see in their lives.



Who Do We Serve?

Youth: FEC serves 400 homeless youth, which represents only 10% of the 3,990 currently living in the county

Women: Women comprise only 36% of FEC's participants, but constitute 46% of homeless shelter residents

Families in Poverty: 39% of single-parent households live in poverty, and the majority lack opportunities to improve their situation



Overview of Our Workforce Development Initiative



Workforce Development Initiative



The Prospect's comprehensive training program builds a strong foundation and support system for every student and challenges them with a rigorous hands-on experience that focuses on accountability. To help participants stay focused on their education and career goals, The Prospect provides comprehensive wraparound support that fosters the success of working learners. Individualized to each student's needs, support starts at the beginning of career exploration, is maintained through the apprenticeship phase, and continues during the transition to employment.

Workforce Development Initiative

Case management: individualized, one-on-one assistance that coordinates and streamlines access to healthcare, mental health services, dental/vision care, SNAP, rental assistance, and other support programs with the goal of supporting the whole person and their family

Childcare: access to childcare for all program participants

Nutritional literacy: offered in-person, as well as virtually using state-of-the-art, innovative QR codes, these education sessions are accessible to everyone, expanding the positive impact of good nutrition throughout the community. Covering wide-ranging topics about the importance of nutritious food, sessions also offer easy-to-make, healthy recipes that taste good

Skill building: by learning and practicing life skills (such as conflict resolution, communicating, problem-solving, adaptability, and self-confidence), participants become self-empowered, understand their responsibilities, and develop the ability to advocate for their rights

Job readiness “essential skills”: teaching the variety of skills needed to improve opportunities and succeed in the working world, including prioritizing, time management, interpersonal skills, teamwork, creativity, critical thinking, and maintaining professionalism



How Our Organization is Financed



The Prospect KC's social enterprise business model generates income that helps sustain the programs and services that transform individual lives and the community



The Prospect's financial plan generates nearly a third of its annual revenue through the operation of its mission-focused businesses



The Prospect secured funding from the Ewing Marion Kauffman Foundation and the Hall Family Foundation for use in 2021 and the Hall Family Foundation for use in 2021 and 2022

URBAN NEIGHBORHOOD INITIATIVE (UNI)

Community Benefit

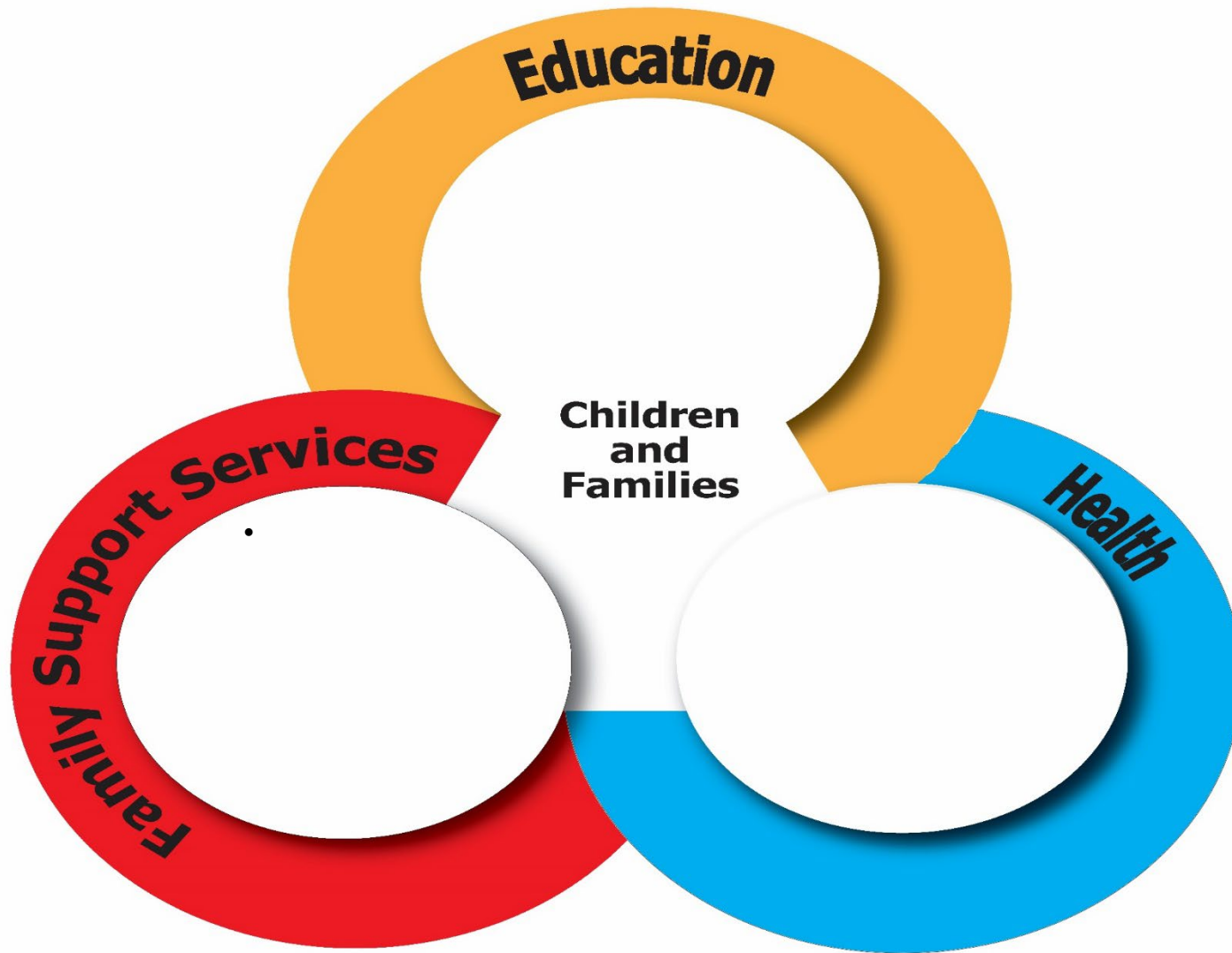
OPERATION Breakthrough



OPERATION Breakthrough



OPERATION Breakthrough



OPERATION Breakthrough

For children, OB provides:

- Up to 55 hours per week of safe, loving care and education
- A full-day early learning program for children ages 0-5 with an emphasis on language and social skills and school readiness
- Before- and after-school care and full-day summer programming for children 5 to 18, which focuses on literacy, STEM and arts activities, while fostering critical thinking, collaboration and social skills.
- Workforce development program for HS students
- Speech and occupational therapy
- Preventive mental health programming for all and one-on-one therapy for children who have experienced trauma
- Health care in a full-service, on-site clinic
- On-site dental care
- Daily breakfast, lunch and snacks

For parents/caregivers, OB provides:

- Parenting classes for various stages of child development
- “Ready for Kindergarten” program to engage parents as their children’s first teachers
- Support groups
- Employment counseling
- Help with budgeting, housing searches, legal matters, relationship issues, etc.
- GED prep/high school completion online
- One-on-one therapy for adults
- Family therapy, for parents with their children
- Food pantry
- Clothing closet for children and adults
- Used furniture and appliances
- Holiday and birthday gift program for children
- Parent Resource Center/computer lab
- Health and fitness programming

STEM started out small in 2015 with a MakerSpace for preschool children...



Projects include:

- Alternative Energy
(e.g. wind turbines, solar luminaries, solar powered cars)
- Circuits/Robotics
(e.g. circuit greeting cards, snap circuits, sphero ball coding, bits and bricks, Lego boost)
- Construction
(e.g. zipline cart, simple machine pulley, bridge building.)

When our children **MAKE THINGS** and **MAKE THEM WORK** ... they learn important principles

OPERATION
Breakthrough



- Different materials can be a good or poor choice for a task.
- A single problem can be solved using many different materials.
- Solving problems takes more than one step.
- You evaluate your design based on how well it meets the goal.

URBAN NEIGHBORHOOD INITIATIVE (UNI)

Additional Community Benefit Ideas

This is not an exclusive list

- Wendell Phillips Neighborhood Office Space & Storage
- Shared Neighborhood Meeting & Office Space
- Additional Workforce Development Opportunities
- Other Ideas?



URBAN NEIGHBORHOOD INITIATIVE (UNI)

Thank you!

Feel free to contact UNI
816-231-0822
information@uni-kc.org



KCNA CAMPUS COMMUNITY DESIGN WORKSHOP

Urban Neighborhood Initiative needs your help designing a beautiful place in the heart of Wendell Phillips neighborhood! Please come participate in a hands-on design workshop to reimagine the grounds of the KCNA building and field as a new community gathering space.

Tuesday, June 7, 2022

6:30-8:30p

Gregg Klice Community Center

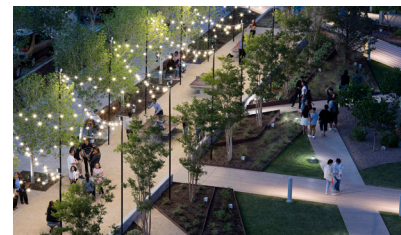
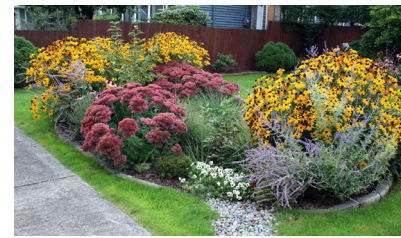
1600 E. 17th Terrace, KCMO 64108

Dinner and kid's activity table provided!

Please RSVP for dinner headcount to:

choxie@hoxiecollective.com

785.840.5507



Urban Neighborhood Initiative

KCNA CAMPUS COMMUNITY DESIGN WORKSHOP

Urban Neighborhood Initiative needs your help designing a beautiful place in the heart of Wendell Phillips neighborhood! Please come participate in a hands-on design workshop to reimagine the grounds of the KCNA building and field as a new community gathering space.

Tuesday, June 7, 2022

6:30-8:30p

Gregg Klice Community Center

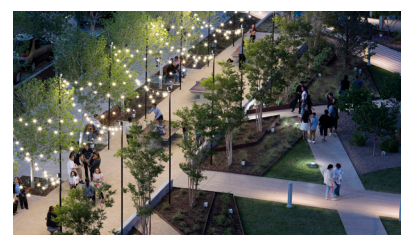
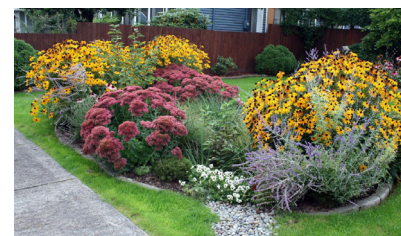
1600 E. 17th Terrace, KCMO 64108

Dinner and kid's activity table provided!

Please RSVP for dinner headcount to:

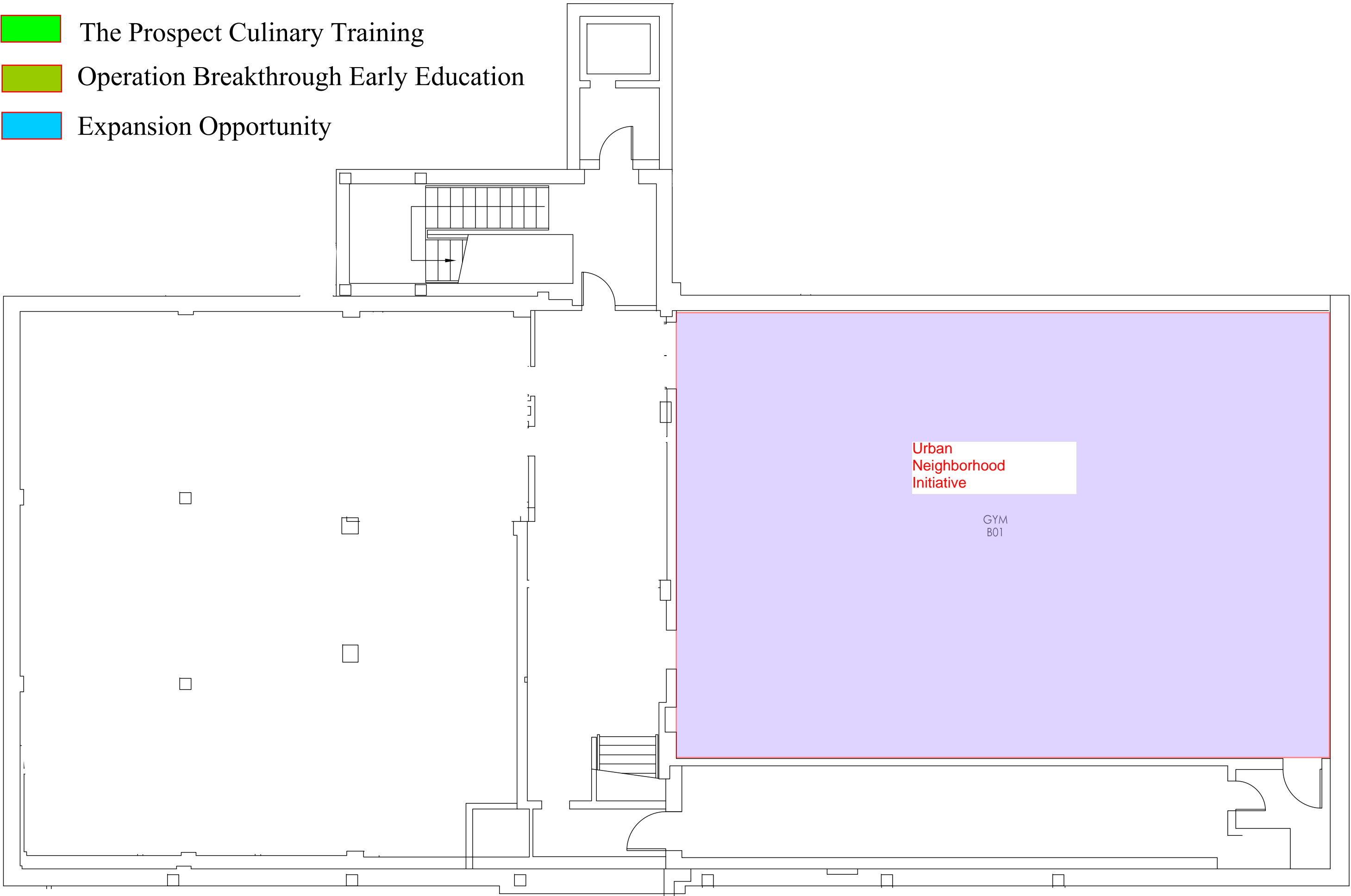
choxie@hoxiecollective.com

785.840.5507



Urban Neighborhood Initiative

- Urban Neighborhood Initiative (UNI)
- STEAM Artists Collaborative
- The Prospect Culinary Training
- Operation Breakthrough Early Education
- Expansion Opportunity



1 BASEMENT PLAN
3/32" = 1'-0"



PROJECT TEAM
Architect
Wellner Architects, Inc.
802 Broadway, 4th Floor
Kansas City, MO 64105-1507
E. wai@wellner.com
P. 816.221.0017
F. 816.221.9456

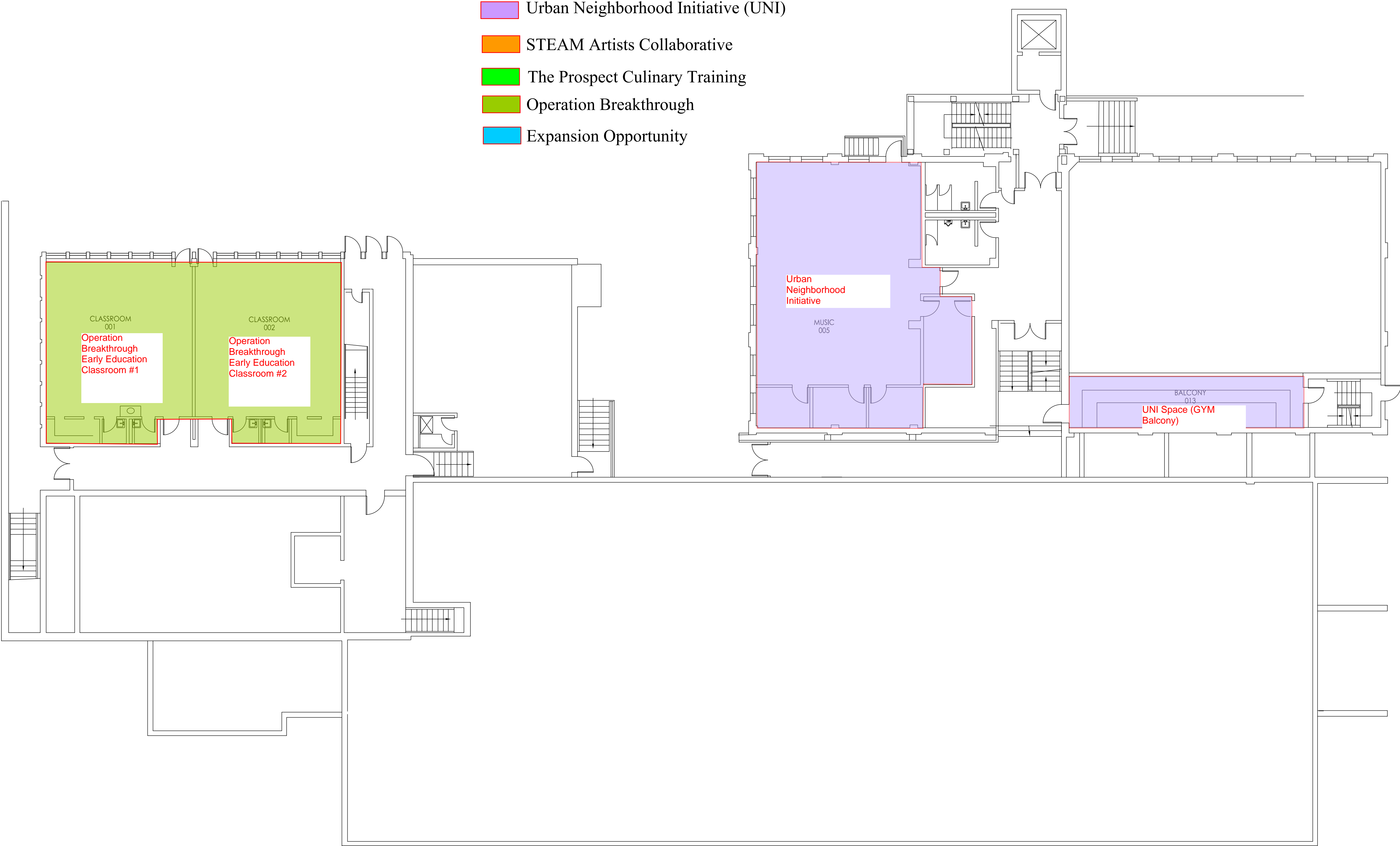
KANSAS CITY, MISSOURI
SCHOOL DISTRICT
PHILLIPS ELEMENTARY
1619 E 24TH TERRACE, KANSAS CITY, MO 64108

ISSUE		DATE
DR	CH	
NO.	DATE	DESCRIPTION

KEY PLAN

BASEMENT
PLAN

PROJ. NO. 1319
COPYRIGHT © 2015



- Urban Neighborhood Initiative (UNI)
- STEAM Artists Collaborative
- The Prospect Culinary Training
- Operation Breakthrough
- Expansion Opportunity

1 GROUND FLOOR PLAN
3/32" = 1'-0"



WELLNER architects
INC.

PROJECT TEAM

Architect
Wellner Architects, Inc.
802 Broadway, 4th Floor
Kansas City, MO 64105-1507
E. wai@wellner.com
P. 816.221.0017
F. 816.221.9456

KANSAS CITY, MISSOURI
SCHOOL DISTRICT
PHILLIPS ELEMENTARY

1619 E 24TH TERRACE, KANSAS CITY, MO 64108

ISSUE		DATE
OR		CH
NO.	DATE	DESCRIPTION

KEY PLAN

GROUND FLOOR PLAN

PROJ. NO. 1319
COPYRIGHT © 2015





1 SECOND FLOOR PLAN
3/32" = 1'-0"



PROJECT TEAM

Architect
Wellner Architects, Inc.
802 Broadway, 4th Floor
Kansas City, MO 64105-1507
E. wai@wellner.com
P. 816.221.0017
F. 816.221.9456

KANSAS CITY, MISSOURI
SCHOOL DISTRICT
PHILLIPS ELEMENTARY
1619 E 24TH TERRACE, KANSAS CITY, MO 64108

ISSUE		DATE
DR	CH	
NO.	DATE	DESCRIPTION

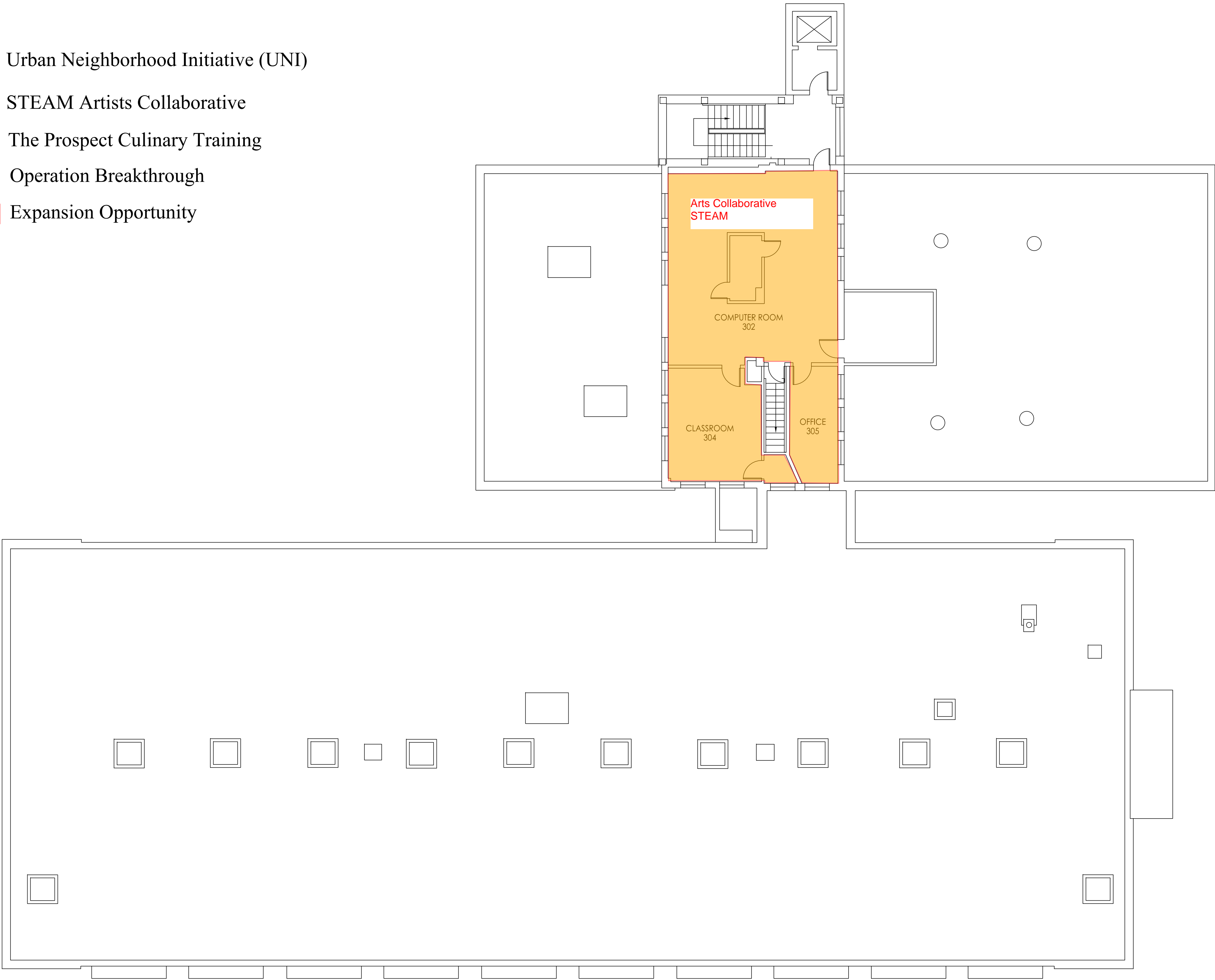
KEY PLAN

SECOND FLOOR
PLAN

PROJ. NO. 1319
COPYRIGHT © 2015


THE PROFESSIONAL WHOSE SIGNATURE AND PERSONAL SEAL APPEARS ON THIS PAGE ASSUMES RESPONSIBILITY ONLY FOR WHAT APPEARS ON THIS PAGE. AND DISCLAIMS (PURSUANT TO SECTION 327.411, RSMO) ANY RESPONSIBILITY FOR ALL OTHER PLANS, SPECIFICATIONS, ESTIMATES, REPORTS, OR OTHER DOCUMENTS OR INSTRUMENTS NOT SEALED BY THE UNDERSIGNED PROFESSIONAL RELATING TO OR INTENDED TO BE USED FOR ANY PART OR PARTS OF THE PROJECT TO WHICH THIS PAGE REFERS.

- Urban Neighborhood Initiative (UNI)
- STEAM Artists Collaborative
- The Prospect Culinary Training
- Operation Breakthrough
- Expansion Opportunity



1 THIRD FLOOR PLAN
3/32" = 1'-0"






WELLNER architects
INC.

PROJECT TEAM

Architect
Wellner Architects, Inc.
802 Broadway, 4th Floor
Kansas City, MO 64105-1507
E. wai@wellner.com
P. 816.221.0017
F. 816.221.9456



KANSAS CITY, MISSOURI
SCHOOL DISTRICT
PHILLIPS ELEMENTARY

1619 E 24TH TERRACE, KANSAS CITY, MO 64108

ISSUE	DATE	
DR	CH	
NO.	DATE	DESCRIPTION

KEY PLAN

THIRD FLOOR PLAN

PROJ. NO. 1319
COPYRIGHT © 2015

THE PROFESSIONAL WHOSE SIGNATURE AND PERSONAL SEAL APPEARS ON THIS PAGE ASSUMES RESPONSIBILITY ONLY FOR WHAT APPEARS ON THIS PAGE. AND DISCLAIMS (PURSUANT TO SECTION 327.411, ICSMO) ANY RESPONSIBILITY FOR ALL OTHER PLANS, SPECIFICATIONS, ESTIMATES, REPORTS, OR OTHER DOCUMENTS OR INSTRUMENTS NOT SEALED BY THE UNDERSIGNED PROFESSIONAL RELATING TO OR INTENDED TO BE USED FOR ANY PART OR PARTS OF THE PROJECT TO WHICH THIS PAGE REFERS.