



**MEADOW HEIGHTS**

**ELEMENTARY SCHOOL**

SAN MATEO - FOSTER CITY SCHOOL DISTRICT

# Principal's Virtual Coffee Chat



October 25, 2021

# Agenda

- Gratitude
- Pooled Testing
- Modified Quarantine
- Visitors on campus
- The Big 5
- Facilities Update
- Harvest Carnival
- Closing/Questions

Thank you  
Meadow Heights  
Community



# SMFCSD Pooled Testing Webpage/Página de Web Del Distrito



Pooled Testing  
Plan

SAN MATEO-  
FOSTER CITY  
SCHOOL  
DISTRICT

FOLLOW US ONLINE

 SAN MATEO-  
FOSTER CITY  
SCHOOL DISTRICT

LIVE · LEAD · LEARN

The poster features a young boy wearing a blue face mask, sitting on a school bench with backpacks. The background is a black and white photograph of a school hallway.



Plan de Pruebas  
Colectivas

DISTRITO  
ESCOLAR DE  
SAN MATEO-  
FOSTER CITY

SÍGUENOS EN LÍNEA

 DISTRITO ESCOLAR  
DE SAN MATEO -  
FOSTER CITY

LIVE · LEAD · LEARN

The poster features a young boy wearing a blue face mask, sitting on a school bench with backpacks. The background is a black and white photograph of a school hallway.

**San Mateo County Coalition  
for Safe Schools and Communities**

# **Pandemic Recovery Framework**

**October 20, 2021**

---

## [Updated Pandemic Recovery Framework](#)

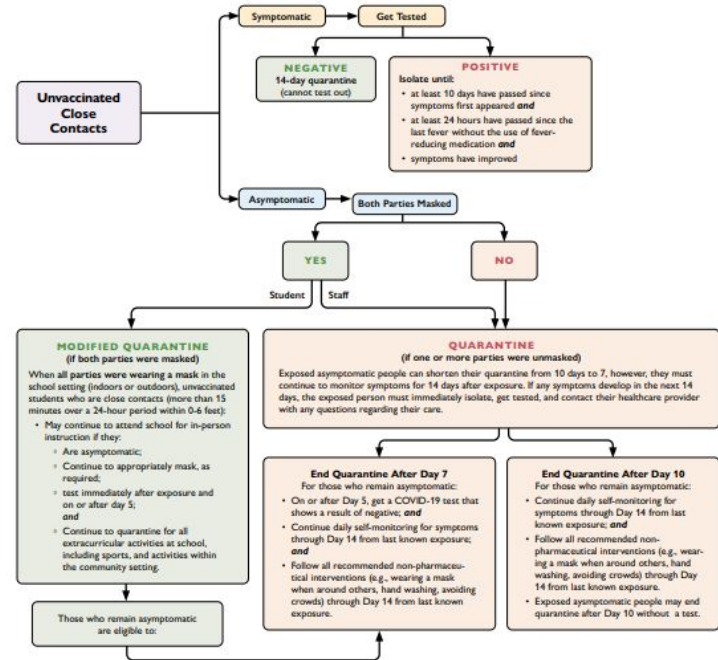
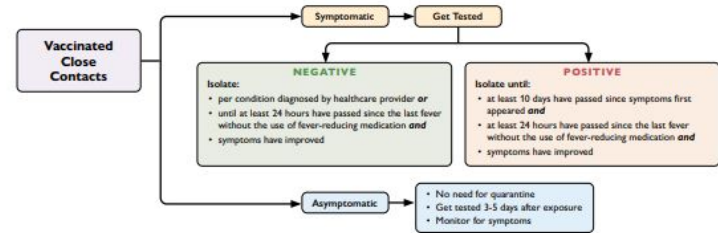
*(Page 3 lists areas that have been updated)*

---

# San Mateo County Guidance

- Modified quarantine
- After school programs
- Page 26 of the Framework

## COVID-19 Exposure at School (CDPH)



# School Visitors & Keeping Students, Staff and Families Healthy

- All schools must verify the vaccination status of all visitors/*Todos las escuelas deben verificar la vacunación de visitantes*
- Proof of a vaccination card must be provided in the office each visit/*Prueba de vacunación se debe proveer en la oficina cada visita*

**OR**

- Negative COVID-19 test up to 48 hours before visit/*Tener prueba negativa de examen de COVID-19 entre 48 horas*

**AND**

- Masks worn at ALL times indoors and outdoors/*Usar mascarilla adentro y afuera siempre*
-

# San Mateo County: The Big 5



## IMMEDIATE ACTION RESPONSE: THE BIG FIVE

When an emergency occurs, it is critical that staff members take **immediate** steps to protect themselves, their students, and other people on campus. Become familiar with The Big Five, and be prepared to perform all assigned responsibilities.

ACTION	DESCRIPTION
	Implement to isolate students and staff from the outdoor <b>environment</b> and provide greater protection from external airborne contaminants or wildlife. Close windows and air vents, and shut down air conditioning/heating units.
	Implement during an <b>earthquake</b> or explosion to protect building occupants from flying and falling debris.
	Initiate for a <b>potential threat</b> of danger in the surrounding community. All classroom/office doors are closed and locked, and all students and staff remain inside until otherwise directed. Instruction continues as planned.
	Initiate for an <b>immediate threat</b> of <b>danger</b> to occupants of a campus or school building and when any movement will put students and staff in jeopardy. Once implemented, no one is allowed to enter or exit rooms for any reason unless directed by law enforcement.
	Implement when conditions outside the building or off-site are safer than inside or on-site. Requires moving or directing students and staff to move from school buildings to a pre-determined safe location.



## REPUESTA DE ACCIÓN INMEDIATA LAS CINCO GRANDES

En caso de una emergencia, es fundamental que todo miembro del personal tome medidas necesarias **inmediatamente** para protegerse así mismo, a sus estudiantes, y a todo el personal en el establecimiento. Familiarizarse con Las Cinco Grandes y estar preparados para desempeñar todas las responsabilidades asignadas.

ACCIÓN	DESCRIPCIÓN
	Poner en practica el como aislar a los estudiantes y al personal docente del <b>medio ambiente</b> , la intemperie y proporcionar una mayor protección contra las contaminaciones del aire de afuera o la fauna y la flora. Cerrar las ventanas, las rejillas de la ventilación y apagar las unidades de aire acondicionado y calefacción.
	Poner en practica el como proteger a los ocupantes que se encuentran en el establecimiento de la caída de escombros durante un <b>terremoto</b> o una explosión.
	Prepararse para una <b>amenaza potencial</b> de peligro en la comunidad inmediata. Todas las puertas de las clases / oficinas deben estar cerradas con llave y todos los estudiantes y el personal deben de permanecer adentro hasta que se les indique lo contrario. Continuar las instrucción como se han establecido.
	Prepararse para proteger de <b>cualquier amenaza de peligro</b> a los ocupantes del establecimiento o edificio de la escuela. Todas las puertas de las clases / oficinas deben estar cerradas con llave y todos los estudiantes y el personal deben de permanecer adentro hasta que se les indique lo contrario. Continuar las instrucción como se han establecido.
	Poner en practica cuando las condiciones fuera del edificio o del establecimiento sean más seguras que adentro del lugar. Requiere dirigir o mover a los estudiantes y al personal de los edificios de una escuela a una localidad predeterminada más segura.



# Facilities Update

## Measure T Funds At Work...



Year	Project
October 2021	Install 2 water bottle fillers on campus
Spring 2022	Start laying down new electrical feed for classrooms and new MPR (on the lower yard)
Spring 2022	Fire Entrance on Falda Street
Spring 2022	Restroom assessment to see if updates are needed
Summer 2022	HVAC Installation of new HVAC units in all classrooms that do not have AC
Summer 2022	Cleaning crew to clean classrooms before school starts
Anticipated Summer 2022	Replace grass w/Turf field
Summer 2023	New flooring in all classrooms
When MRP is complete	New slurry and striping on the lower yard
When MRP is complete	Add solar units on new MPR

# Meadow Heights PTA Harvest Carnival

## Friday, Oct. 29<sup>th</sup> 2021

Kindergarten

Front Yard

11:30am to 12:15pm

Grades 1-5

Lower Playground

1:30pm to 2:15pm

Parent Volunteers Needed to Supervise Carnival Stations!

Sign up on Sign up Genius  
[Kindergarten Volunteer Registration](#)  
[Grades 1-5 Volunteer Registration](#)

Only Parent Volunteers will be allowed on Campus

All Parent Volunteers must be vaccinated against COVID-19.

[Attestation and Vaccination Card Upload Required](#)

- Only volunteers allowed on campus
- Kindergarten wears costume to school
- 1st-5th Graders change after lunch
- 1st-5th need to get into costume independently
- Students will rotate activities as a class outdoors

# Meadow Heights PTA Carnaval de la Cosecha

## Viernes 29 de Octubre 2021

Kindergarten

Patio De  
Enfrente

11:30am to 12:15pm

Grados 1-5

Patio de recreo de  
nivel inferior

1:30pm to 2:15pm

¡Se necesitan padres voluntarios para supervisar las  
estaciones de carnaval!

Regístrate en "Sign up Genius"  
[Kindergarten Registro Voluntario](#)  
[Grados 1-5 Registro Voluntario](#)

Solo se permitirán padres voluntarios en el campus

Todos los padres voluntarios deben estar vacunados contra  
COVID-19.

[Se Requiere la Carga de la Tarjeta de  
Certificación y de Vacunación](#)

# Friday Mustang Newsletter/Boletín Informativo en viernes



This newsletter goes out each Friday. It includes important school and some district information. Contact the office if you are not receiving this weekly newsletter from Meadow Heights.

Este boletín sale todos los viernes. Incluye información importante sobre la escuela y parte del distrito. Comuníquese con la oficina si no está recibiendo este boletín semanal de Meadow Heights.





**THANK  
YOU  
FOR  
YOUR  
TIME**