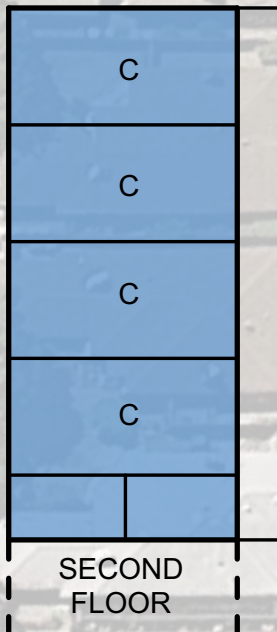


**CLASSROOMS:**  
 New 2 story classroom building  
 HVAC improvements needed  
 Collaboration space between classrooms  
 Access between classrooms  
 Additional power/ data  
 New flooring, carpet tiles  
 Expand gardens for outdoor learning  
 Music, Art & Science classrooms



**MULTI PURPOSE ROOM:**  
 Expand bldg. to allocate all activities  
 Flexible spaces for before and after school activities.  
 Folding partitions  
 Improve layout for lunch service  
 Permanent stage  
 Music classroom behind MPR  
 Improve: Acoustics, ventilation

**PLAYGROUND:**  
 Covered outdoor eating area  
 New fencing for security  
 Upgrade yard lighting  
 Upgrade drainage -flooding-

**DROP-OFF/ PICK-UP:**  
 Traffic coordination with City: Signs and lights, street bumps. ADA parking  
 Expand drop-off area on Calhoun St.  
 Safety for bikers.

**ADMIN:**  
 Relocate Main office to building entrance  
 Directional sign throughout campus  
 Need Conference/ meeting rooms  
 Health office needs an efficient layout

**MEDIA CENTER / LIBRARY:**  
 Need larger space  
 Improve efficiency of layout  
 Provide teaching and reading spaces  
 Improve lighting and finishes at Comp. Lab

- KEY**
- NEW BUILDING
  - RECONFIGURED / EXPANDED
  - MODERNIZED
  - NEW / RECONFIGURED SITE WORK
  - SHADE STRUCTURE
  - NEW GRASS AREA
  - POSSIBLE FUTURE GROWTH
  - NEW FENCE
  - MAIN ENTRY POINT
  - OUTER PERIMETER ENTRY POINT
  - INNER PERIMETER ENTRY POINT
  - C CLASSROOM
  - T TOILET

DRAFT

FOR DISCUSSION ONLY

