

WELCOME

Please take the first few minutes to look at the Facility Master Plans

We will begin the presentation at approximately 7:15 pm

PLEASE NOTE:

- These Master Plans represent long term visions of the future of each school.
- It is anticipated that these plans will take many years and multiple funding sources to complete.
- First phase projects may include improvements from any of the three categories.

Community Outreach Meetings

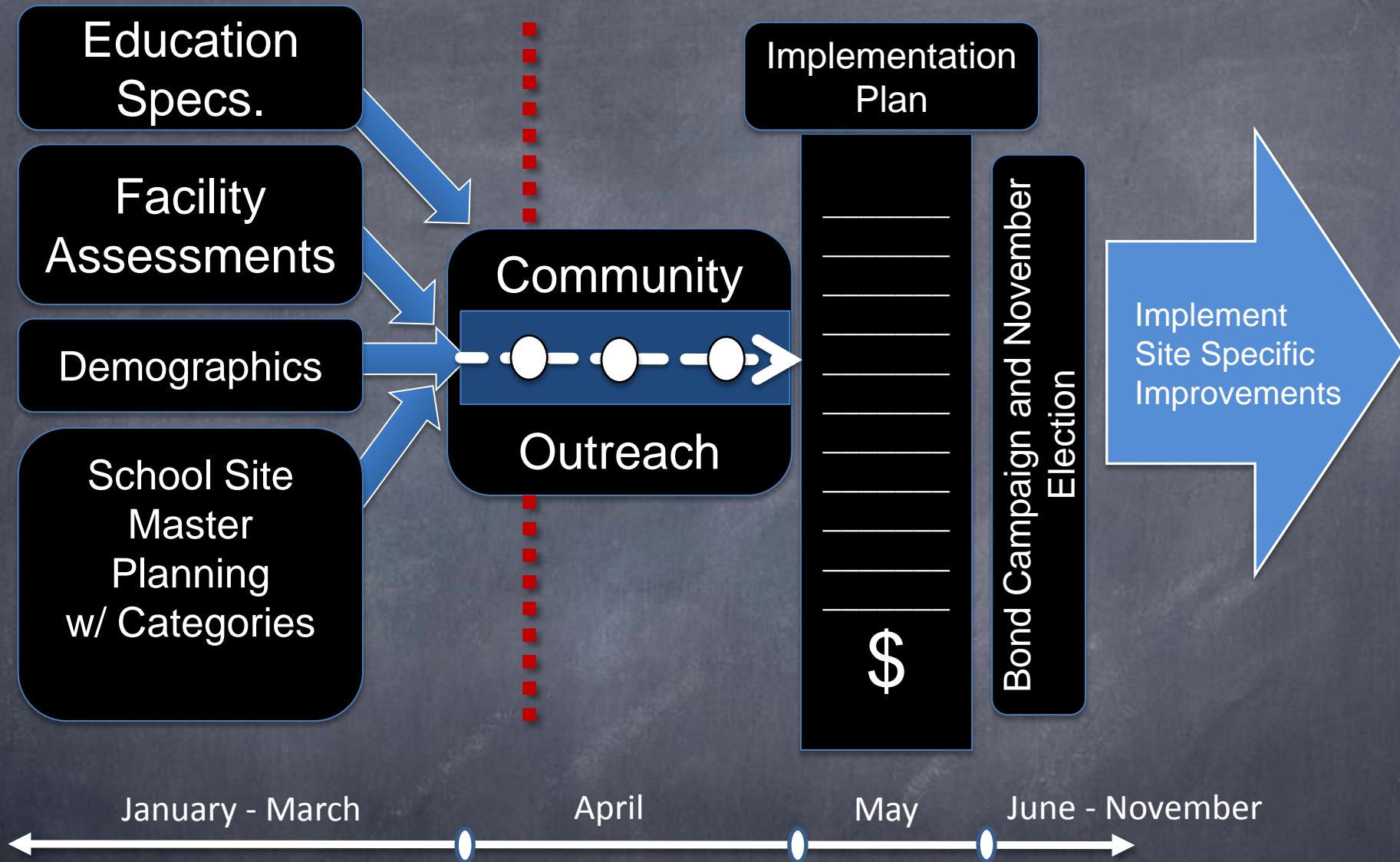
April 21, 24 & 30, 2014

Alameda Unified School District

Facilities Master Planning Process Update



QUATTROCCHI KWOK
ARCHITECTS



Elements of a Master Plan*

*Modified from Sept. 17, 2013 AUSD BOE presentation

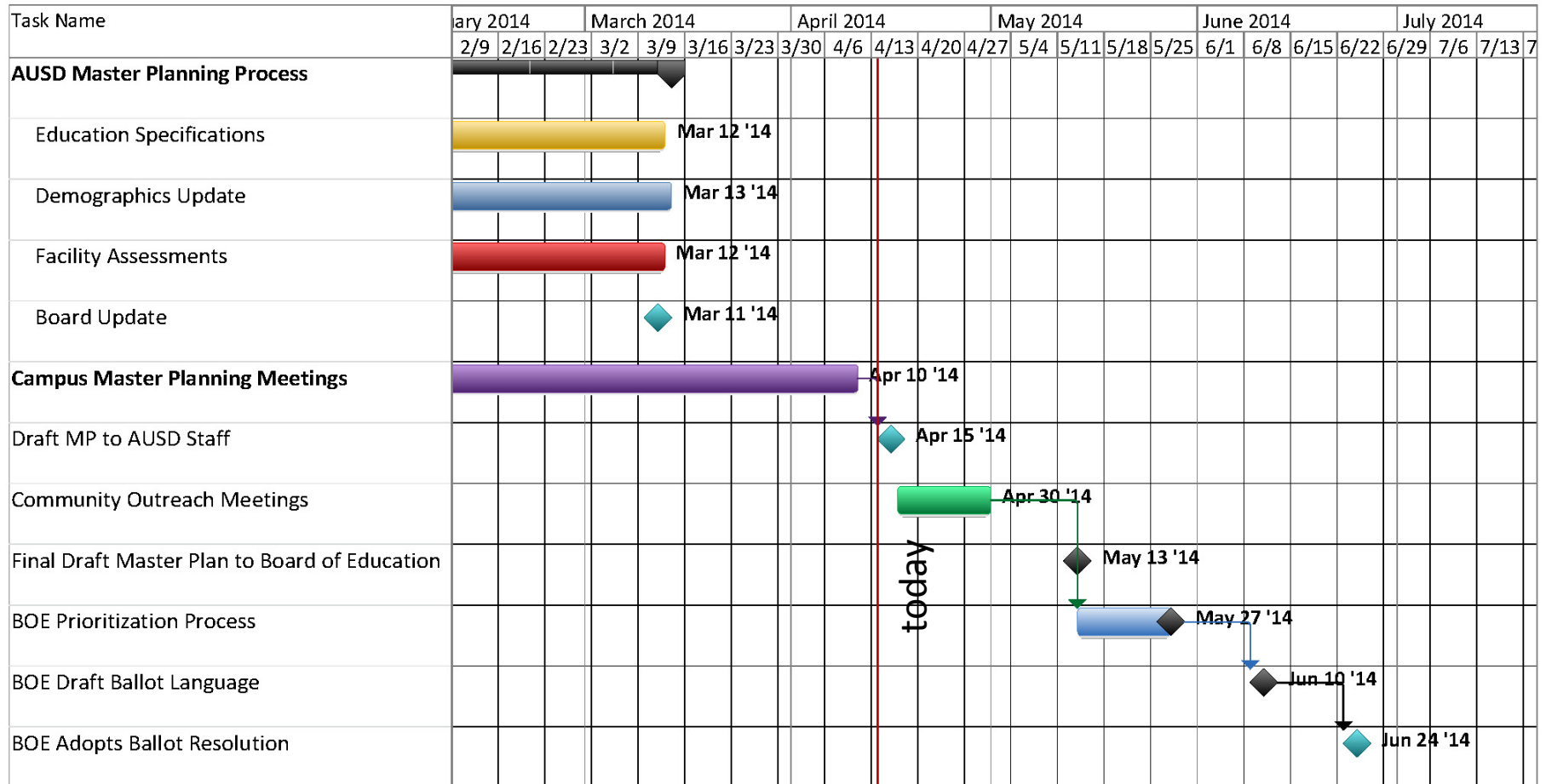
Overview of Master Plan Process

- Master Plans are Long-Term Plans
 - Living Document – regularly revisited & revised
- Start with 2012 Facilities Assessments of 17 schools
- Update Demographics
 - Completed March 20th by Jack Schreder & Associates
- Complete Education Specifications
 - Approved March 25th
- Obtain User and Community Input
 - Over 50 Individual School Master Planning meetings
 - Nearly 400 attendees at Master Planning meetings

Overview of Master Plan Process

- Additional Facility Assessments
 - Historic Alameda High School
 - Maintenance & Supplies Yard
 - The Warehouse
 - Thompson Field
 - 2 Singleton Ave. former school sites (Navy sites)
 - Eagle Avenue (former Island HS site)
 - District Offices (Staff Needs Assessment)
- 3 Outreach Meetings – April 21, 24 & 30
- Cost Estimates
 - High Schools
- FMP Approval on May 27th BOE agenda.

Schedule Update



Master Plan Categories

Facilities Master Plan - Categories

Category 1: Critical Facility Needs (CFN)

Improvements to meet code requirements, student safety, building infrastructure systems and preservation of buildings from the deleterious impacts of the environment. Examples include:

- ADA – Code Compliancy to the Americans with Disabilities Act
- Roofing Repair or Replacement
- Building Weather Protection, Including Windows, Siding & Exterior Doors
- Mechanical, Plumbing, Electrical, Utility Systems Repair or Replacement
- Security/Student Safety Upgrades
- Improvements for Student Safety such as Pedestrian Paths or Unsafe Vehicular Traffic Crossing
- Notification Systems (phones and intercoms)

Facilities Master Plan - Categories

Category 2: Educational Program Needs (EPN)

Improvements that impact the student learning environment and support the District's Educational Program/ Education Specifications. EPN improvements will impact more than just classrooms.

Examples include:

- Spaces Needed for Enrollment Capacity
- Information Technology Improvements
- Architectural Upgrades, Including Finishes & Cabinetry
- Outdoor Learning Environments and Libraries
- PE and Playground Improvements Including Fields
- Energy Efficiencies Upgrades
- Parking & Traffic – not identified in CFN
- Site Improvements, such as Drainage or Paving






Facilities Master Plan - Categories

Category 3: Future Facility Needs (FFN)

Improvements not covered under Critical Facilities Needs or Educational Program Needs.

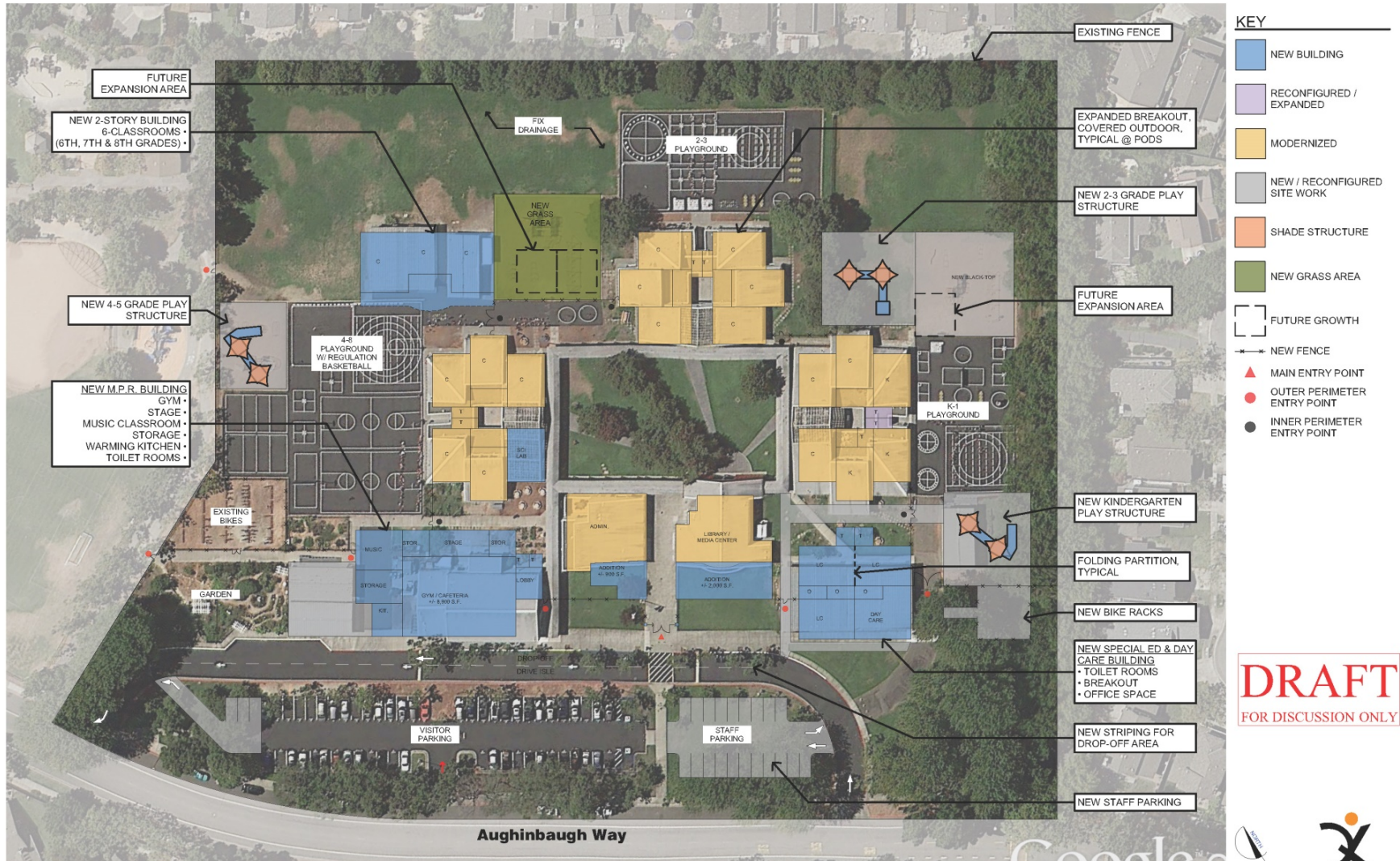
Provides desired improvements that may include aesthetic considerations, optional upgrades or other non-critical but desired work to each school.

District Wide Trends

	DISTRICT COMMON TRENDS	COMMON PROPOSED RESPONSE
	Safety and Security	New or improved fencing to create a secure perimeter, door hardware and visual Control, access control through Administration
	Accessibility	Upgraded wheelchair ramps, restroom upgrades, accessible parking improvements and changes to site features
	Technology	A/V systems in classrooms, wireless internet access at all locations and A/V systems at Multi-Purpose Rooms
	Science, Technology, Engineering, Art, Mathematics	21 st Century adaptable and flexible Classrooms and Lab spaces, small group learning spaces and outdoor work areas
	Facilities Support Infrastructure	Additional private meeting spaces of various sizes, a clear and welcoming sense of entry at Administration and Reception area

School Master Plans

Bay Farm Elementary School



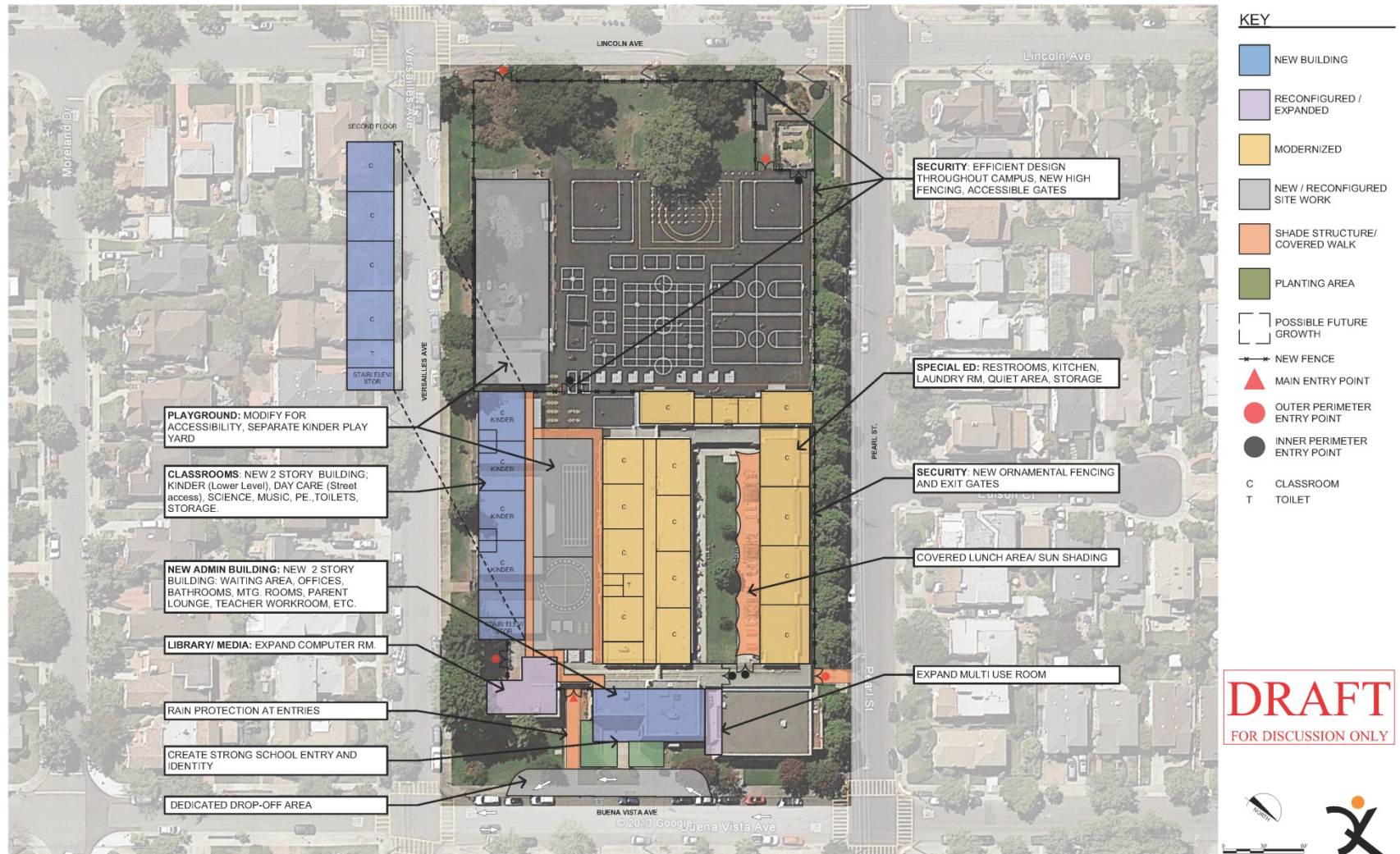
BAY FARM ELEMENTARY SCHOOL SITE PLAN

Earhart Elementary School



EARHART ELEMENTARY SCHOOL SITE PLAN

Edison Elementary School



EDISON ELEMENTARY SCHOOL SITE PLAN

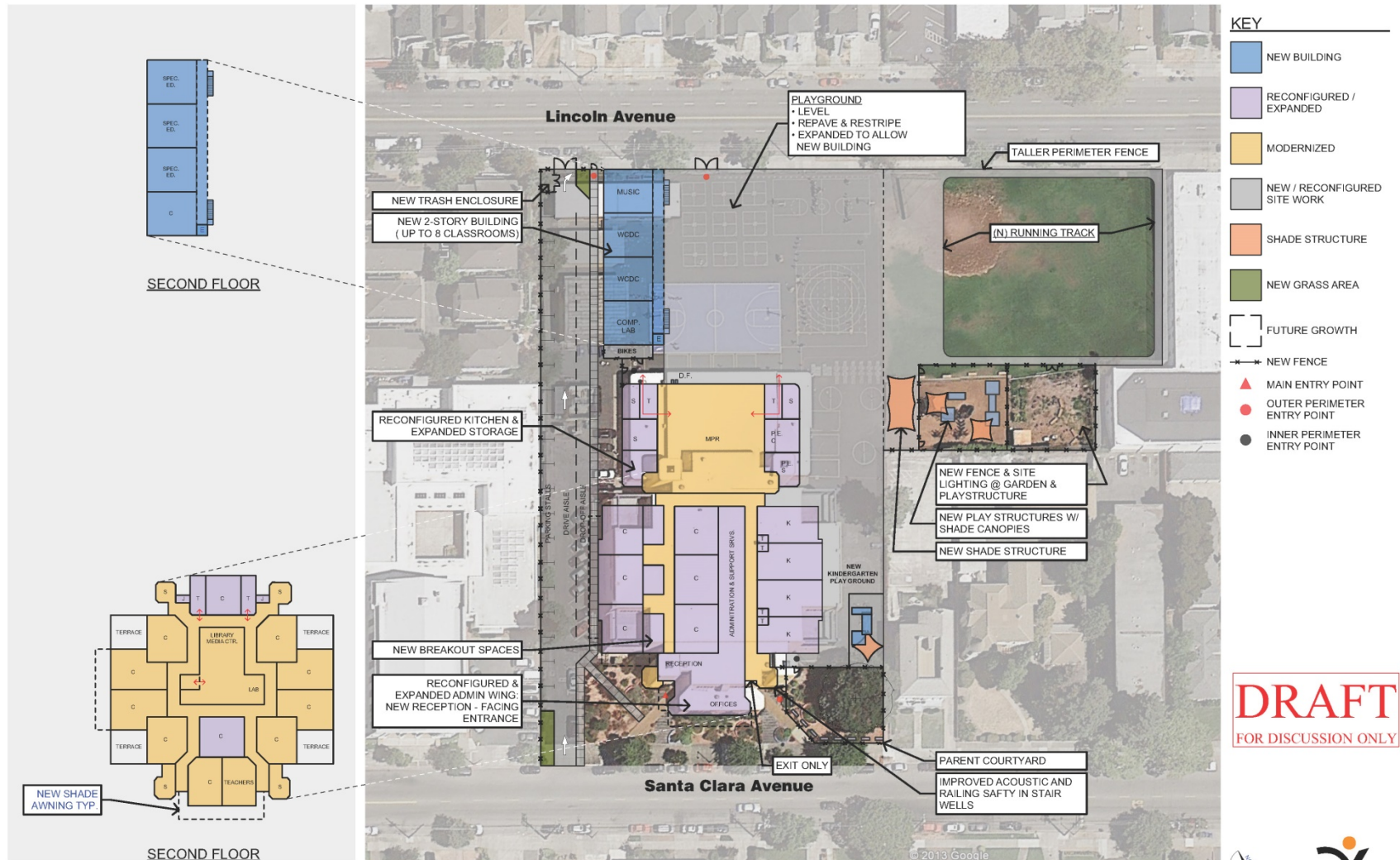
DRAFT
FOR DISCUSSION ONLY

Franklin Elementary School

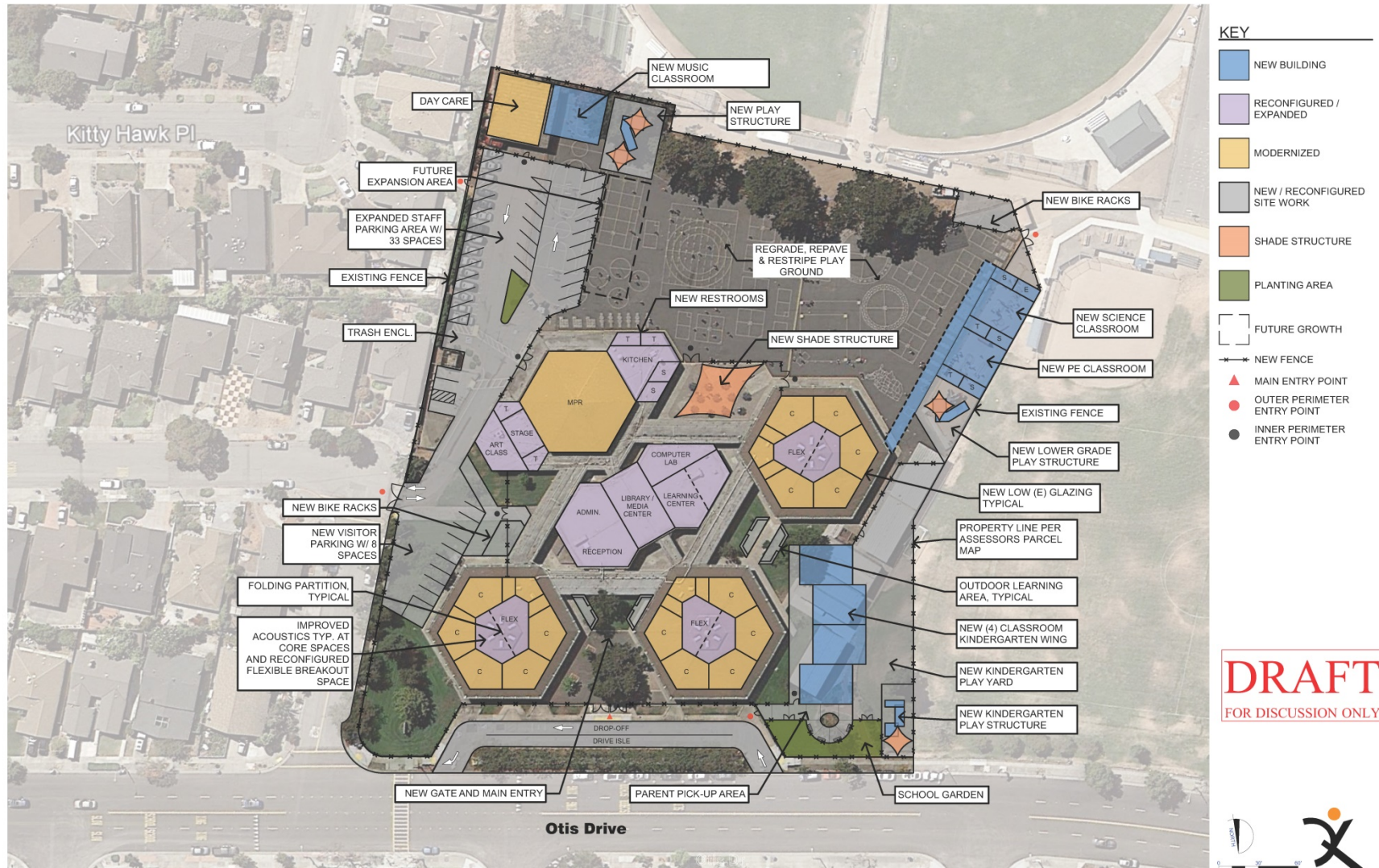


FRANKLIN ELEMENTARY SCHOOL SITE PLAN

Haight Elementary School

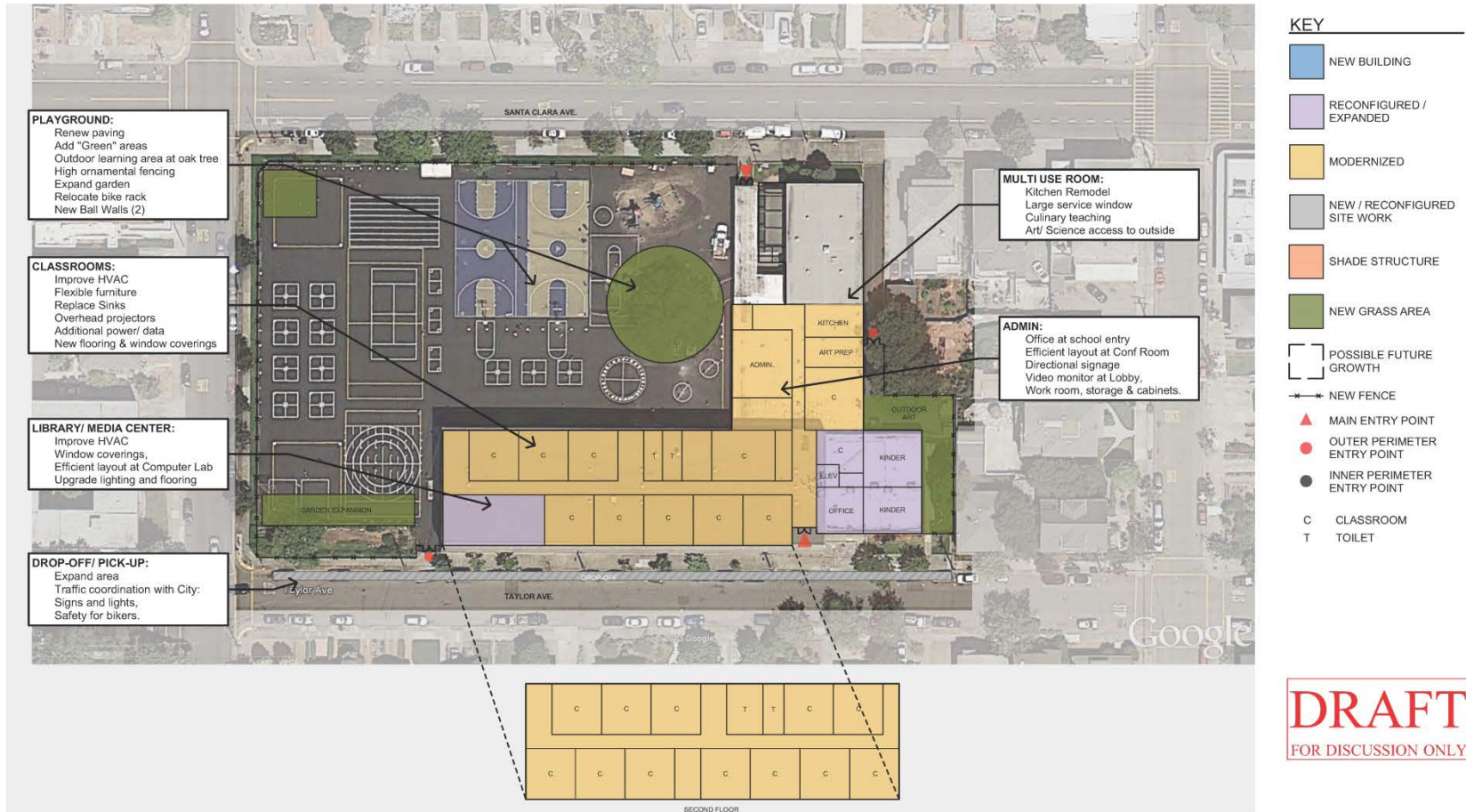


Lum Elementary School



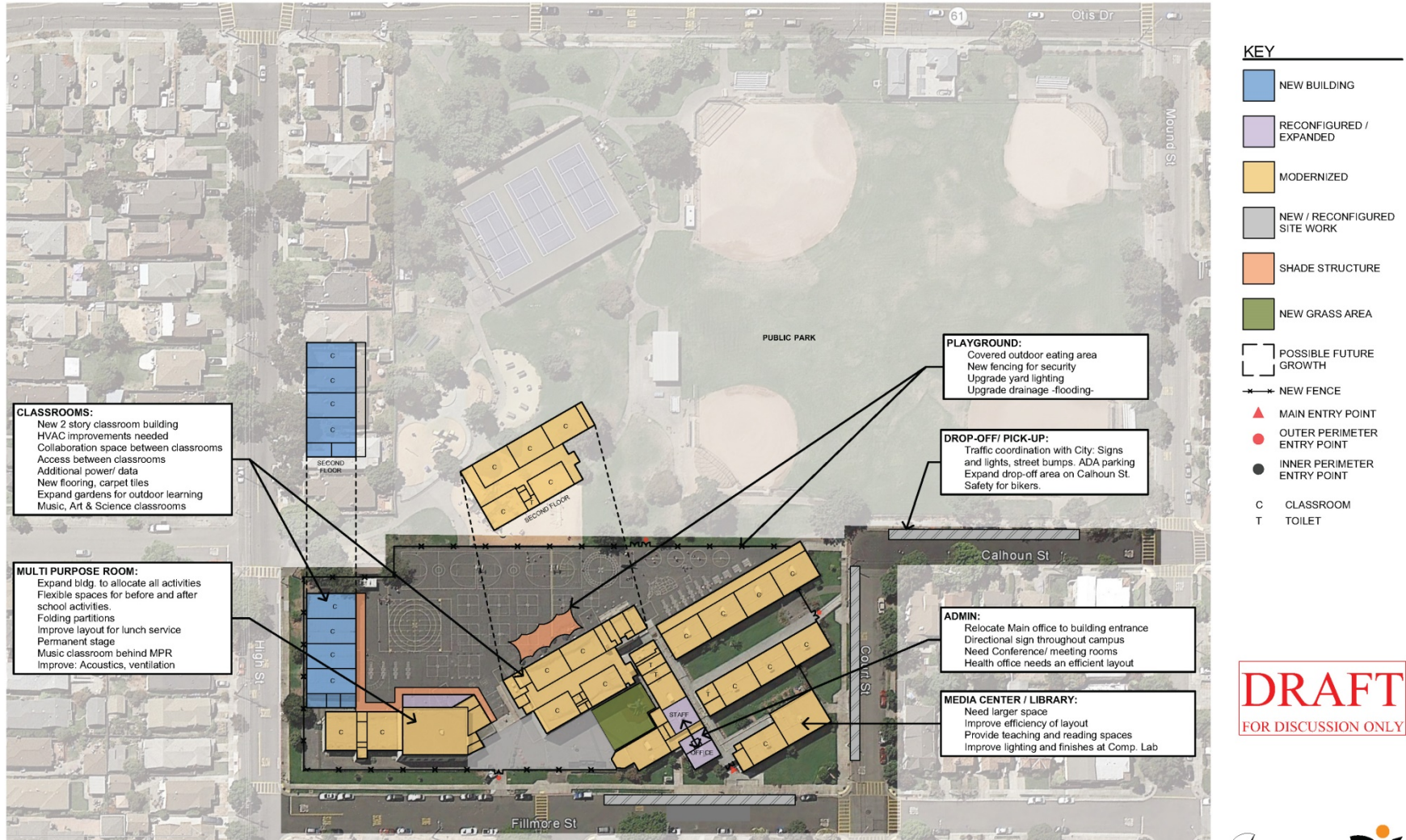
LUM ELEMENTARY SCHOOL SITE PLAN

Maya Lin School



DRAFT
 FOR DISCUSSION ONLY

Otis Elementary School



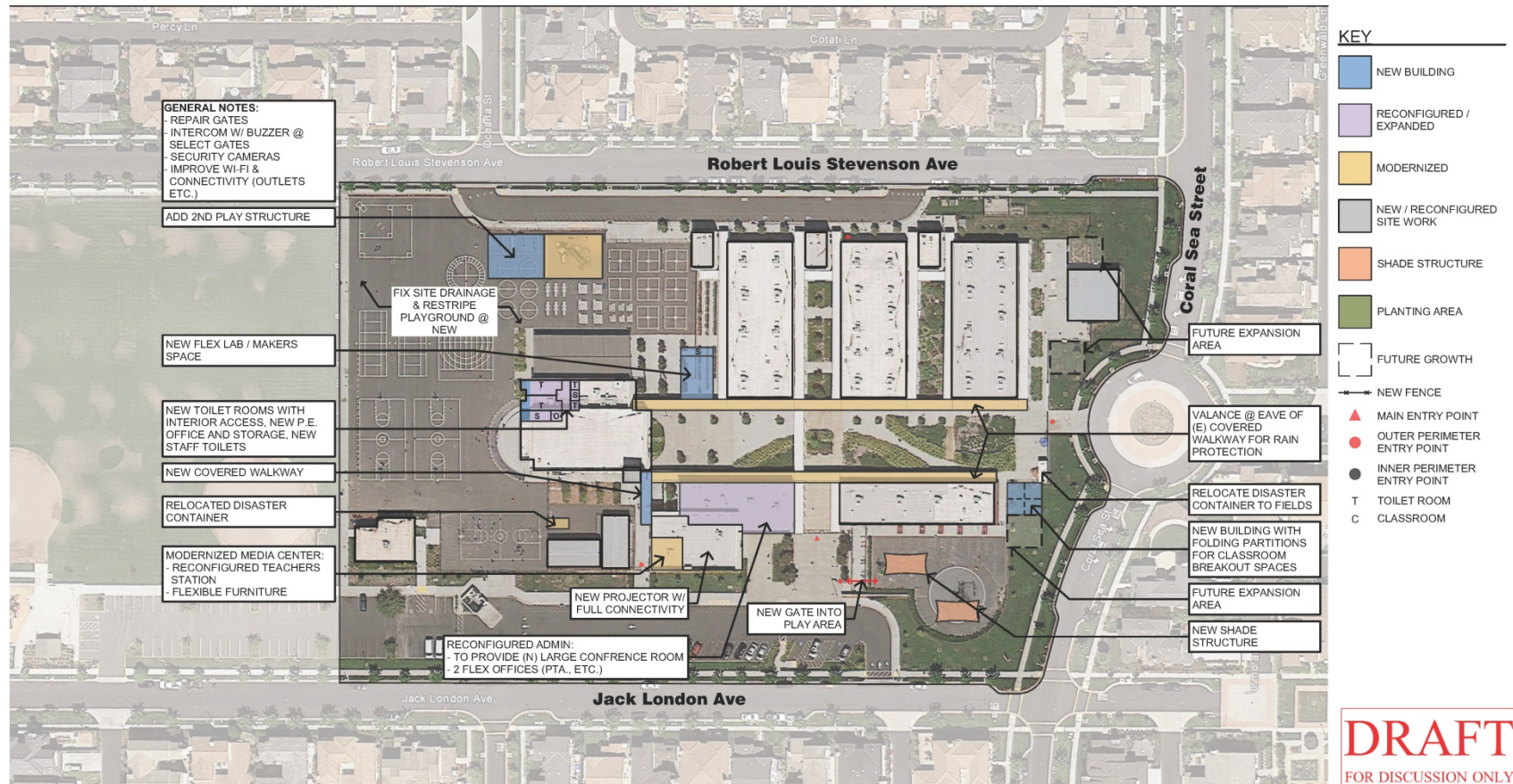
DRAFT
FOR DISCUSSION ONLY



Paden Elementary School



Ruby Bridges Elementary School



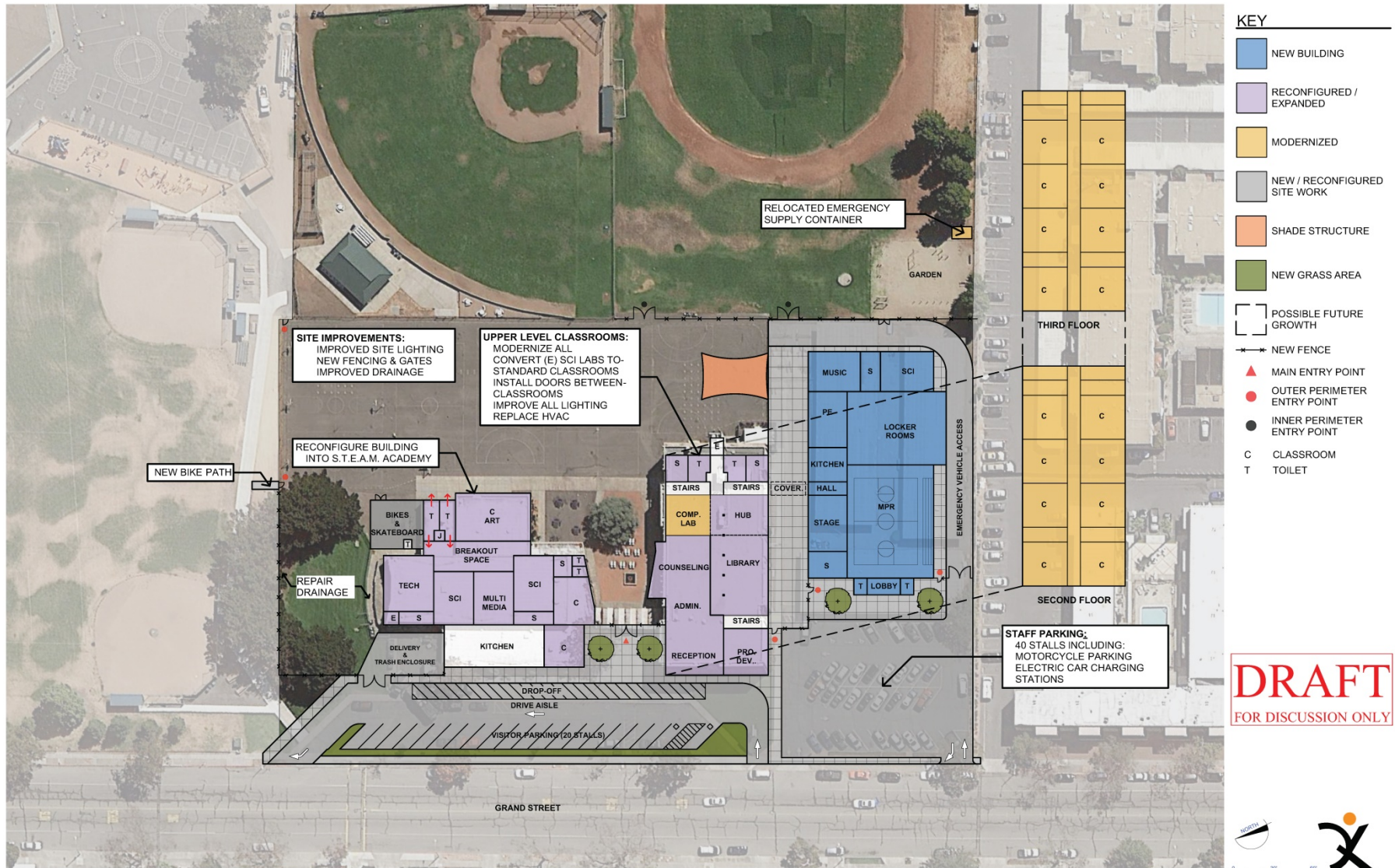
Lincoln Middle School



LINCOLN MIDDLE SCHOOL SITE PLAN

DRAFT
FOR DISCUSSION ONLY

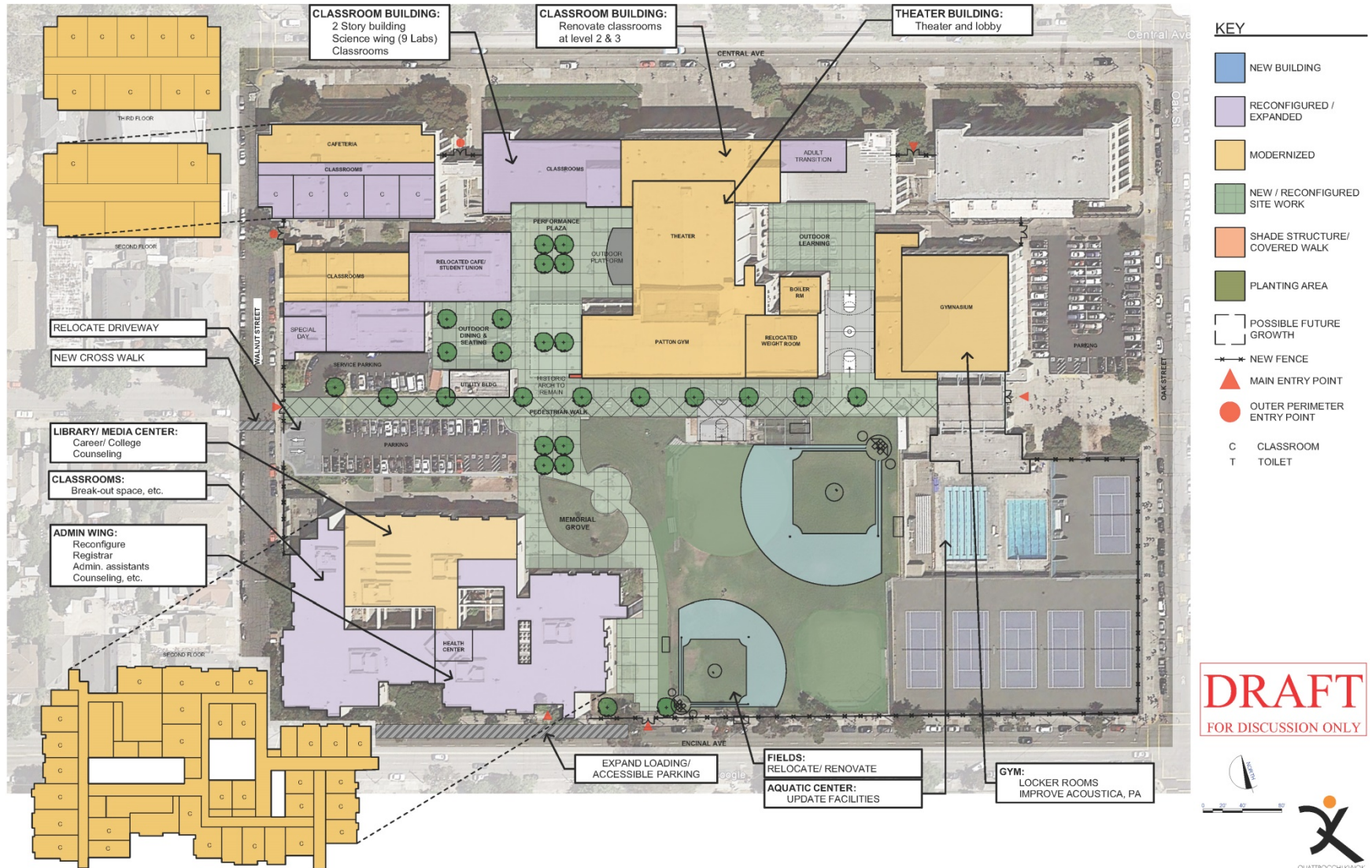
Wood Middle School



WOOD MIDDLE SCHOOL SITE PLAN

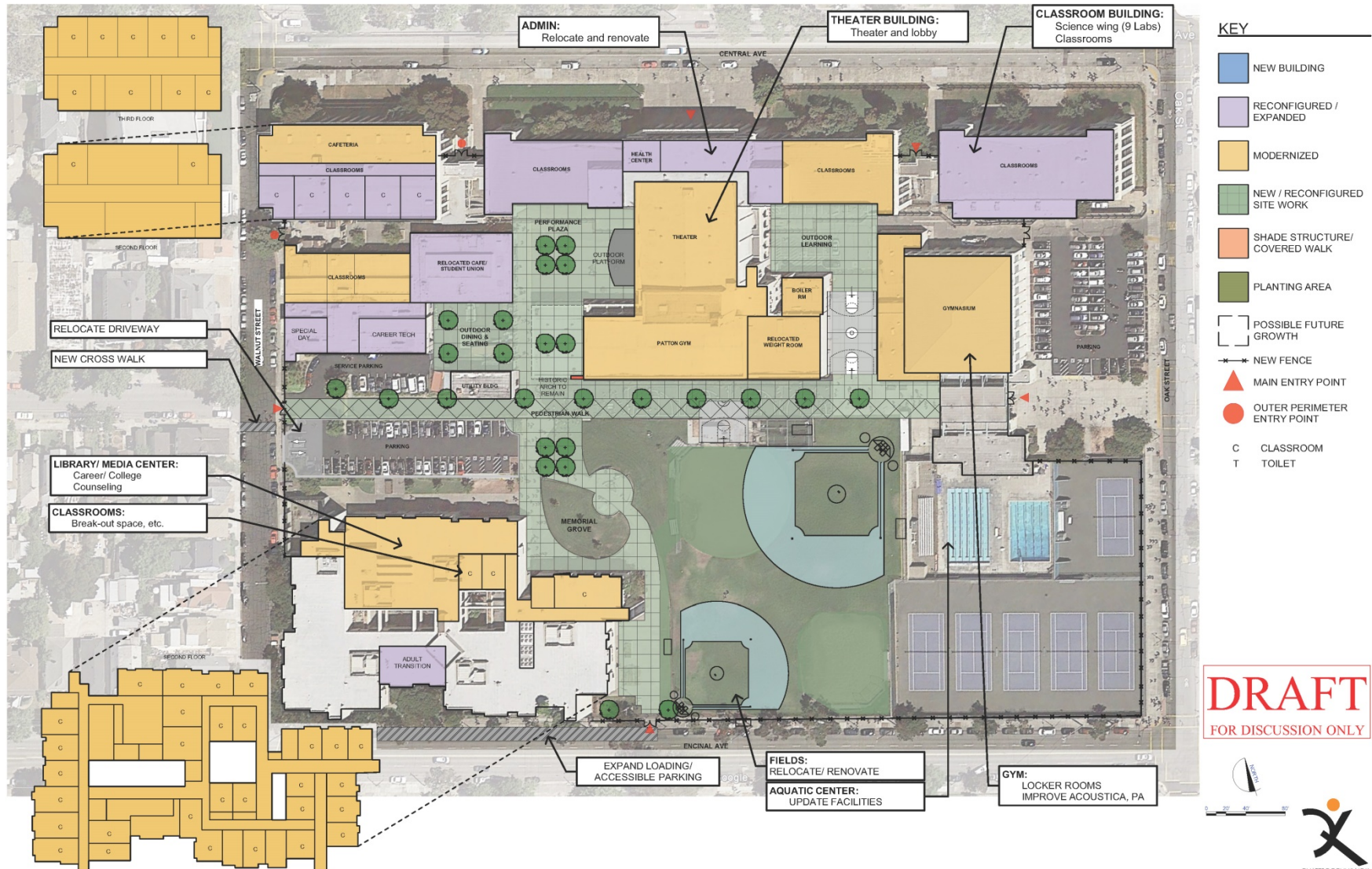
DRAFT
FOR DISCUSSION ONLY

Alameda High School – Option 1



ALAMEDA HIGH SCHOOL SITE PLAN - OPTION 1

Alameda High School – Option 2



ALAMEDA HIGH SCHOOL SITE PLAN - OPTION 2

DRAFT
FOR DISCUSSION ONLY

Thompson Field



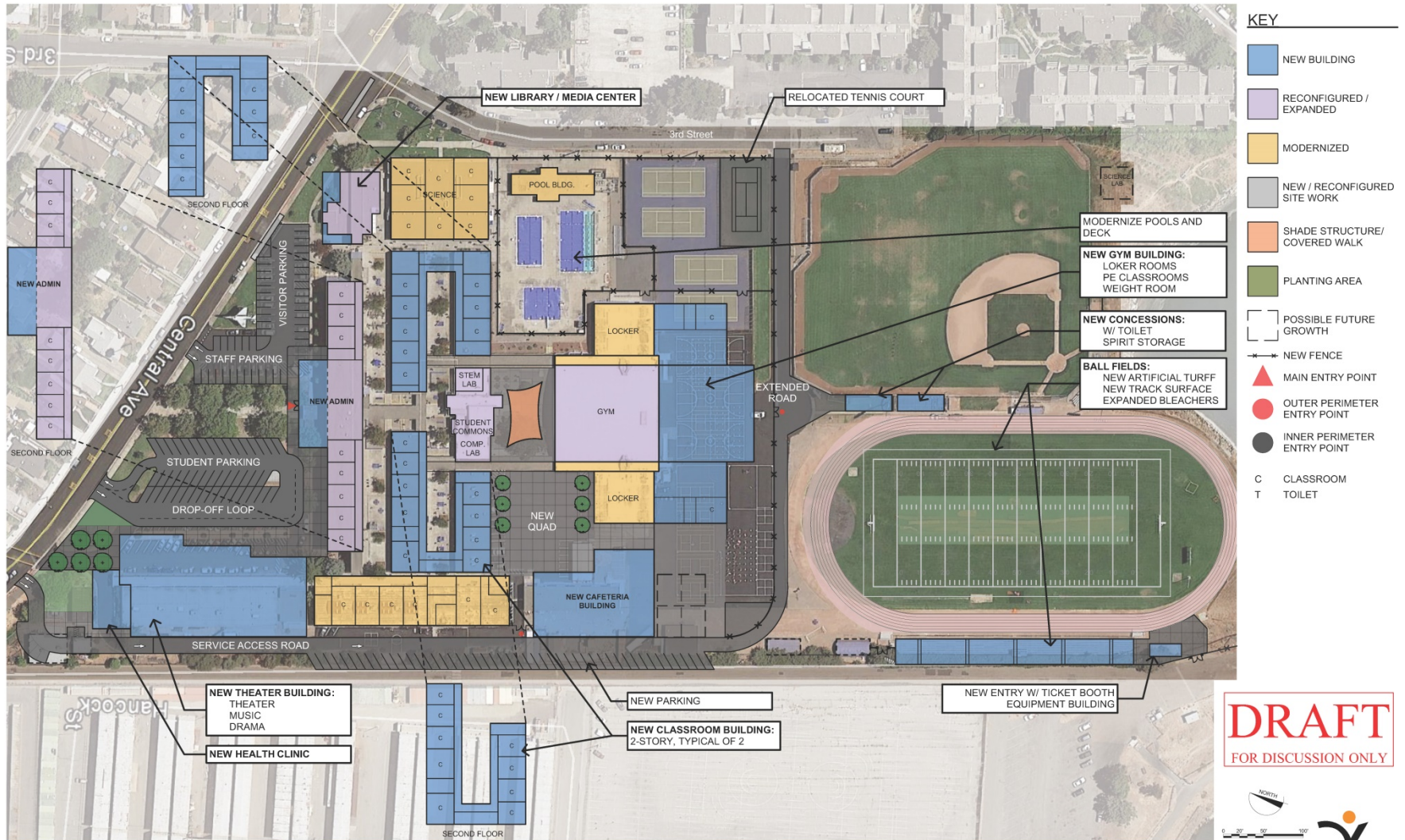
KEY

- NEW BUILDING
- RECONFIGURED / EXPANDED
- MODERNIZED
- NEW / RECONFIGURED SITE WORK
- SHADE STRUCTURE
- NEW GRASS AREA
- POSSIBLE FUTURE GROWTH
- NEW FENCE
- MAIN ENTRY POINT
- OUTER PERIMETER ENTRY POINT
- INNER PERIMETER ENTRY POINT
- C CLASSROOM
- T TOILET

DRAFT
FOR DISCUSSION ONLY



Encinal High School



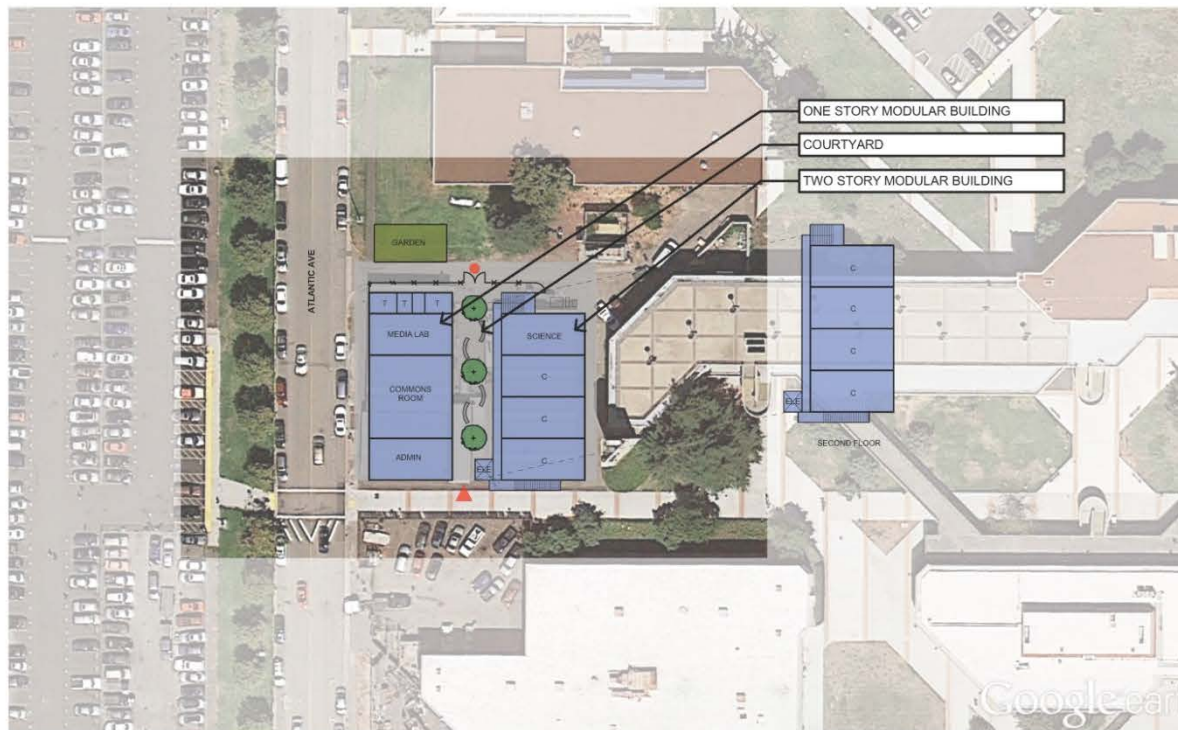
ENCINAL HIGH SCHOOL SITE PLAN

DRAFT
FOR DISCUSSION ONLY



ASTI High School and Charter School Sites

A.S.T.I. High School

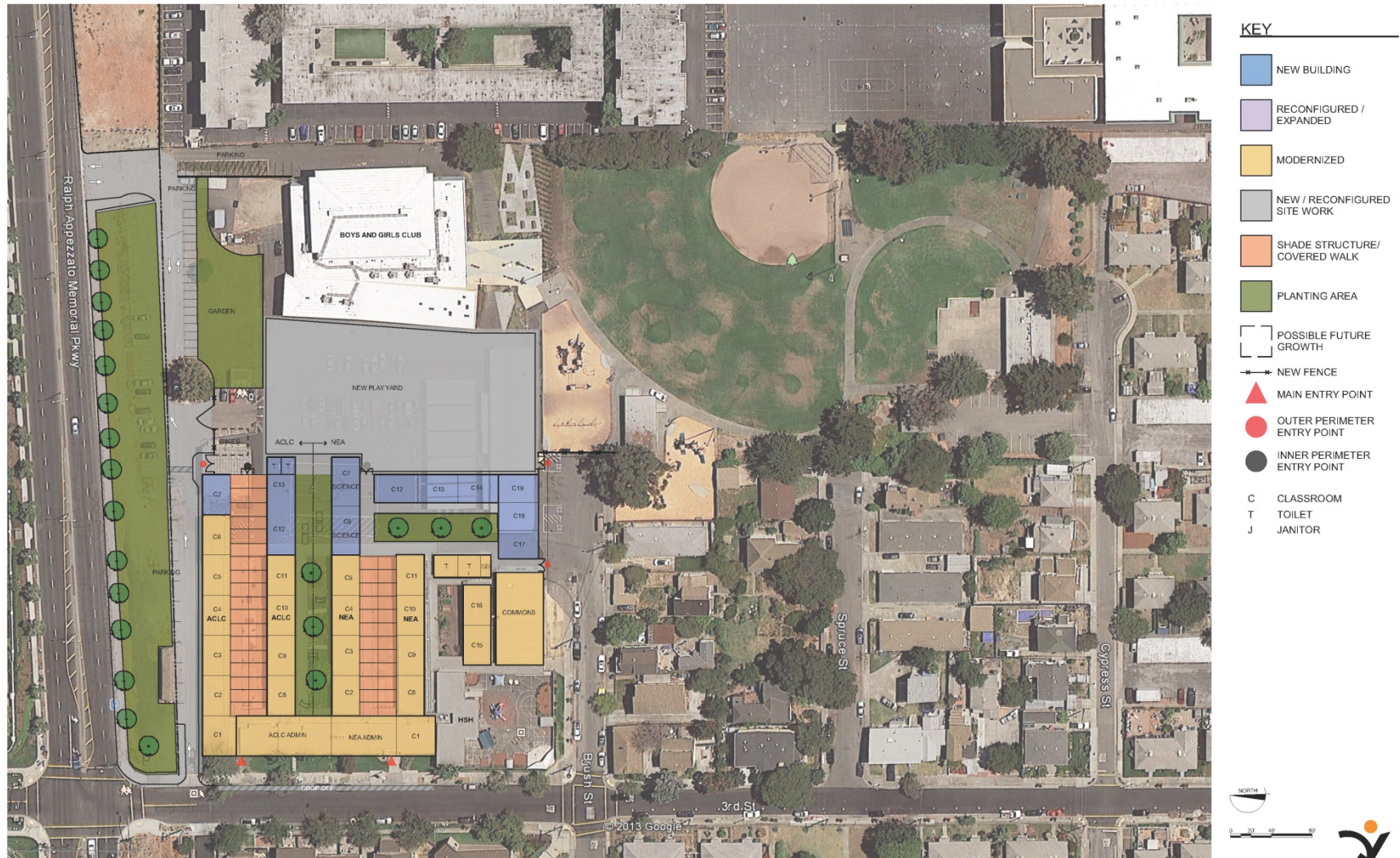


KEY

- NEW BUILDING
- RECONFIGURED / EXPANDED
- MODERNIZED
- NEW / RECONFIGURED SITE WORK
- SHADE STRUCTURE/ COVERED WALK
- PLANTING AREA
- POSSIBLE FUTURE GROWTH
- NEW FENCE
- MAIN ENTRY POINT
- OUTER PERIMETER ENTRY POINT
- INNER PERIMETER ENTRY POINT
- C CLASSROOM
- T TOILET
- J JANITOR



ACLC & Nea Community Learning Center



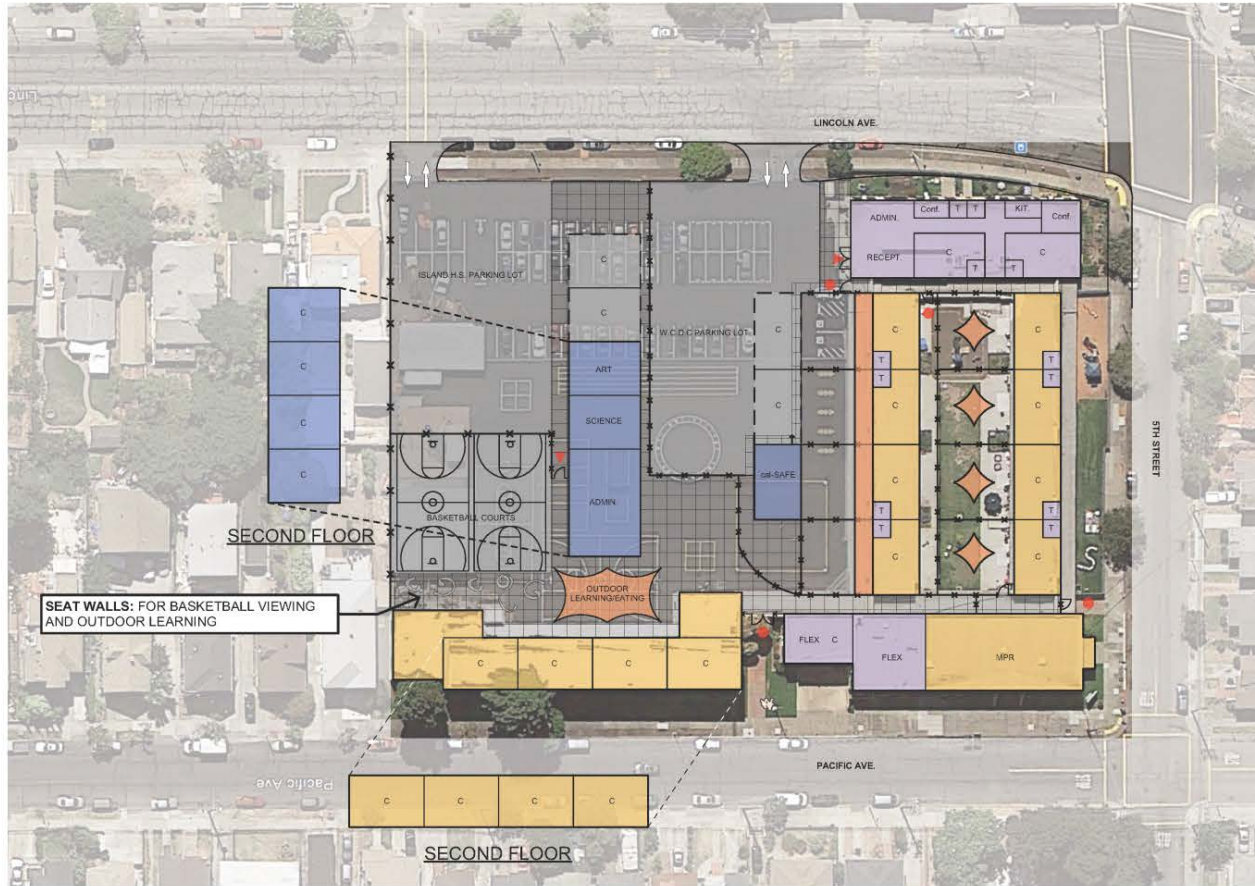
Academy of Alameda/ Adult School



- KEY**
- NEW BUILDING
 - RECONFIGURED / EXPANDED
 - MODERNIZED
 - NEW / RECONFIGURED SITE WORK
 - SHADE STRUCTURE
 - NEW GRASS AREA
 - POSSIBLE FUTURE GROWTH
 - NEW FENCE
 - ▲ MAIN ENTRY POINT
 - OUTER PERIMETER ENTRY POINT
 - INNER PERIMETER ENTRY POINT
 - C CLASSROOM
 - T TOILET

DRAFT
FOR DISCUSSION ONLY

WCDC & Island High School



KEY

- NEW BUILDING
- RECONFIGURED / EXPANDED
- MODERNIZED
- NEW / RECONFIGURED SITE WORK
- SHADE STRUCTURE/ COVERED WALK
- PLANTING AREA
- POSSIBLE FUTURE GROWTH
- NEW FENCE
- MAIN ENTRY POINT
- OUTER PERIMETER ENTRY POINT
- INNER PERIMETER ENTRY POINT
- C CLASSROOM
- T TOILET

DRAFT
FOR DISCUSSION ONLY



Next Steps

- Summarize and Incorporate Community Outreach findings into Facilities Master Plan
- Board Review and Approval of final FMP
- Develop Implementation Plan
- Prepare for November Bond
- Design and Construction starting in 2015

Please give us your impressions

Look closely at all the Master Plans

Write on them. (yes it is ok)

or

Place a comment on a Post-it.

or

Fill out a Community Input card and
drop in one of the boxes.

or

All of the above.

Questions & Discussion

