

Lincoln Middle School Modernization

Site Committee Meeting #3

December 15, 2016

Draft Print

12/14/2016 10:14:41 AM

ALAMEDA UNIFIED SCHOOL DISTRICT



QUATTROCCHI KWOK
ARCHITECTS

Agenda

1. Review meeting #2 and 2A (with Science Department)
2. Discuss science and computer lab locations and relate work
3. Review perimeter security solutions at main entry and bike path
4. Next Steps

SITE COMMITTEE MEETING #2:

- GOT DIRECTION ON BIKE STORAGE LOCATIONS AND CAPACITY
- GOT DIRECTION ON RELOCATION OF EMERGENCY SUPPLY SHED
- DISCUSSED POTENTIAL SOLUTIONS FOR SECURE CAMPUS PERIMETER AT BCDC BIKE PATH. FURTHER DISCUSSION REQUIRED
- DISCUSSED POTENTIAL SOLUTIONS FOR SECURE CAMPUS PERIMETER AT MAIN ENTRY TO CAMPUS. FURTHER DISCUSSION REQUIRED

MEETING #2A – FOCUSED MEETING WITH SCIENCE DEPARTMENT:

- DISCUSSED WAYS IN WHICH THE MODERNIZATION BUDGET MIGHT BEST SERVE THE NEEDS OF THE SCIENCE DEPARTMENT. FURTHER DISCUSSION REQUIRED
- DIRECTED TO STUDY A VARIETY OF POTENTIAL SOLUTIONS.

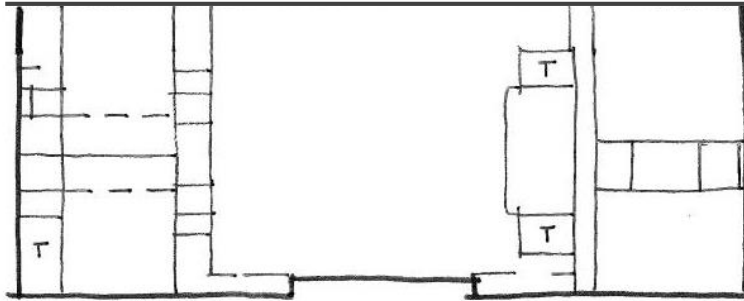
Science and computer lab locations and relate work



Science and computer lab locations and relate work

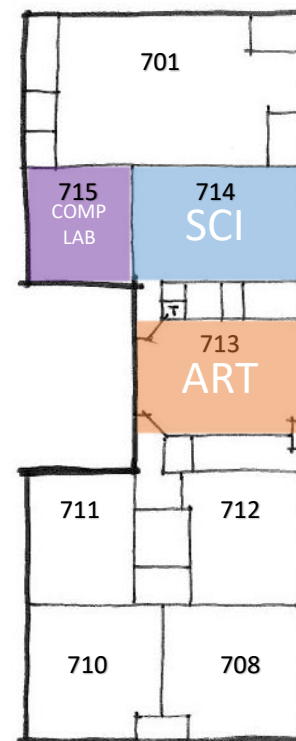
existing conditions

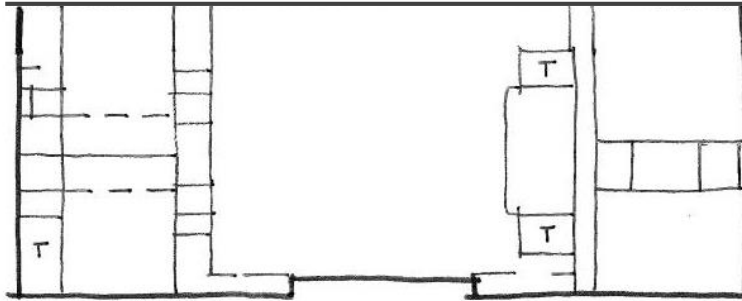




EXISTING LOCATIONS:

- 715: Computer lab (841 s.f.)
- 714: Science lab (1,295 s.f.)
- 713: Art studio (1,240 s.f.)
- 202: Science lab (819 s.f.)
- 801: Special Ed. (1,100 s.f.)
- Maint. At 801 (400 s.f.)

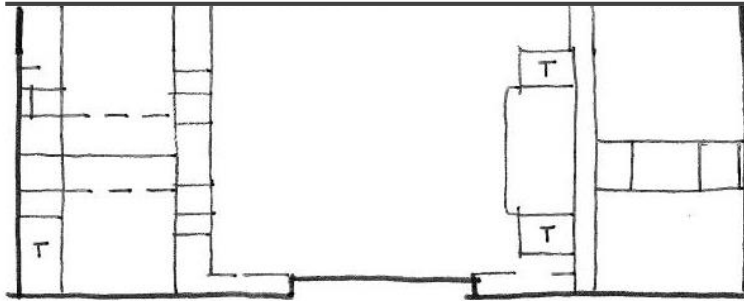




OPTION 1 PROPOSED LOCATIONS:

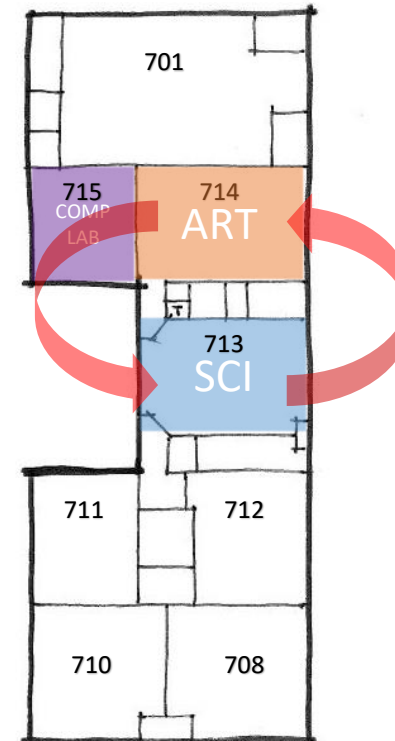
- 715: remains comp. lab. – no work
- 714: remains science lab. – no work
- 713: becomes new science lab - **modernize**
- 202: becomes special ed. classroom – **modernize**
- 801: becomes new art studio – **modernize**

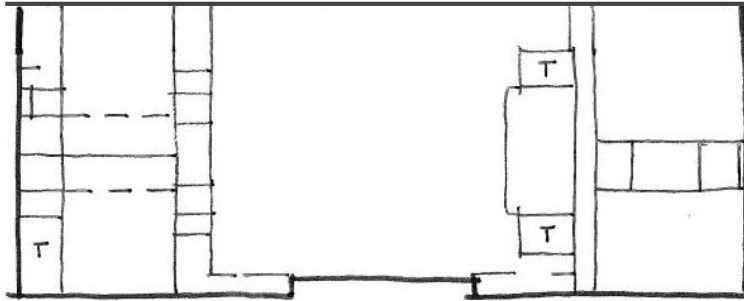




OPTION 3 PROPOSED LOCATIONS:

- 715: remains comp. lab. – no work
- 714: becomes new art studio – **modernize**
- 713: becomes new science lab - **modernize**
- 202: becomes special ed. – **modernize**
- 801: becomes new science lab – **modernize**

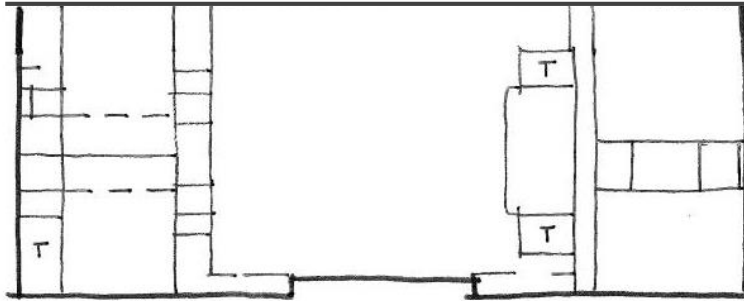




OPTION 2A PROPOSED LOCATIONS:

- 715: enlarge and **modernize** into new science lab (from 841 s.f. to 1,060 s.f.)
- 714: reduce size of science lab and **modernize** (from 1,295 s.f. to 1,060 s.f.)
- 713: stays art lab – no work
- 202: becomes computer lab – **modernize**
- 801: remains special ed. classroom – no work

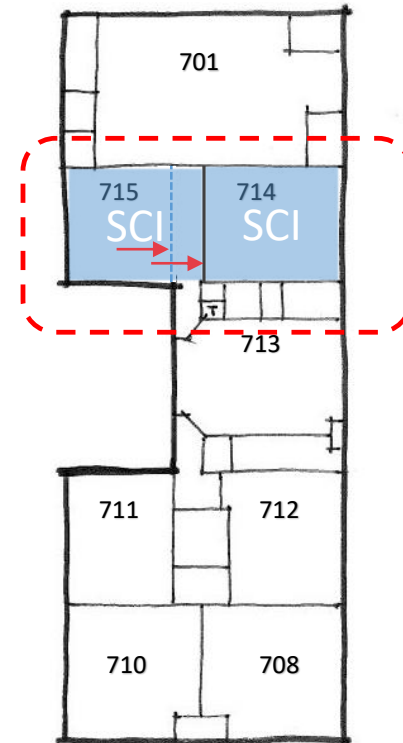
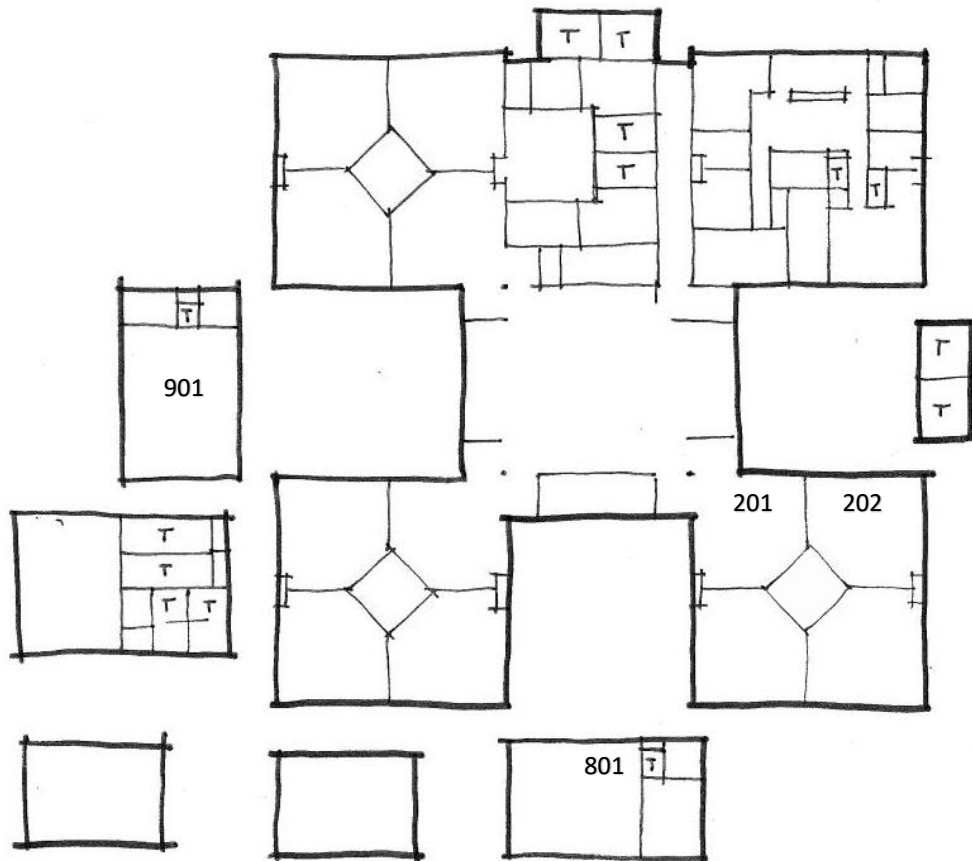
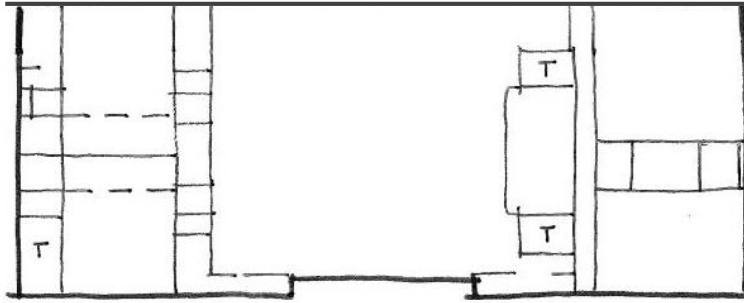




OPTION 2B PROPOSED LOCATIONS:

- 715: enlarge and **modernize** into new science lab
- 714: reduce size of science lab and **modernize**
- 713: stays art lab – no work
- **201: becomes computer lab – modernize**
- *202: vacated by computer lab – New use?*
- 801: remains special ed. classroom – no work



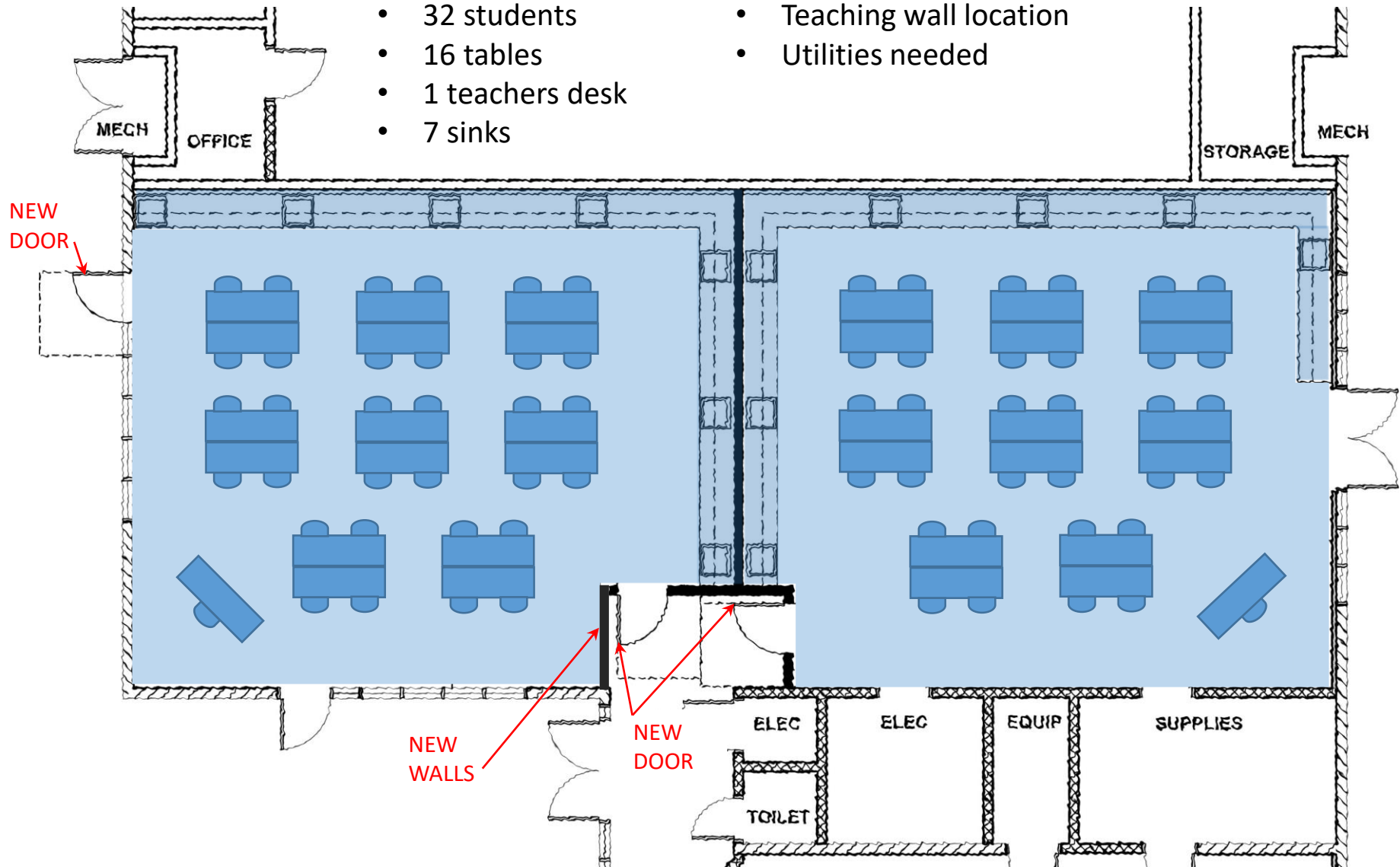


Draft layouts show:

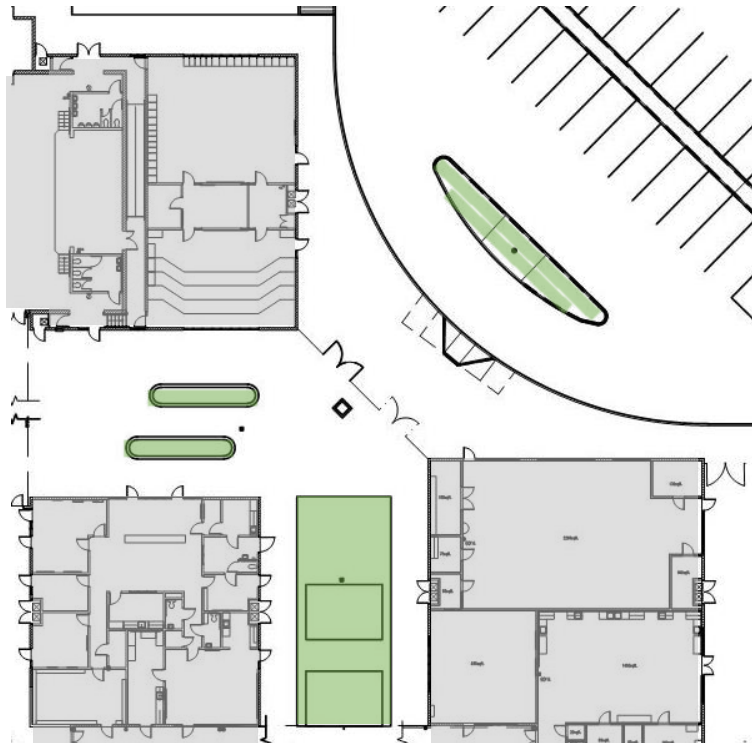
- 32 students
- 16 tables
- 1 teachers desk
- 7 sinks

Discuss:

- Teaching wall location
- Utilities needed

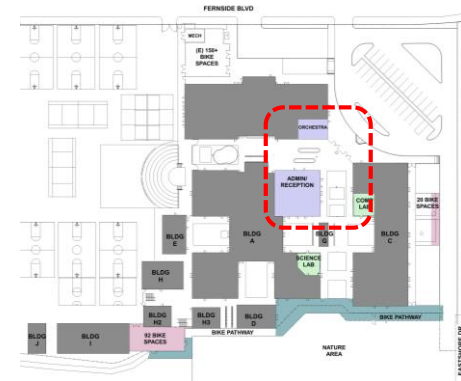
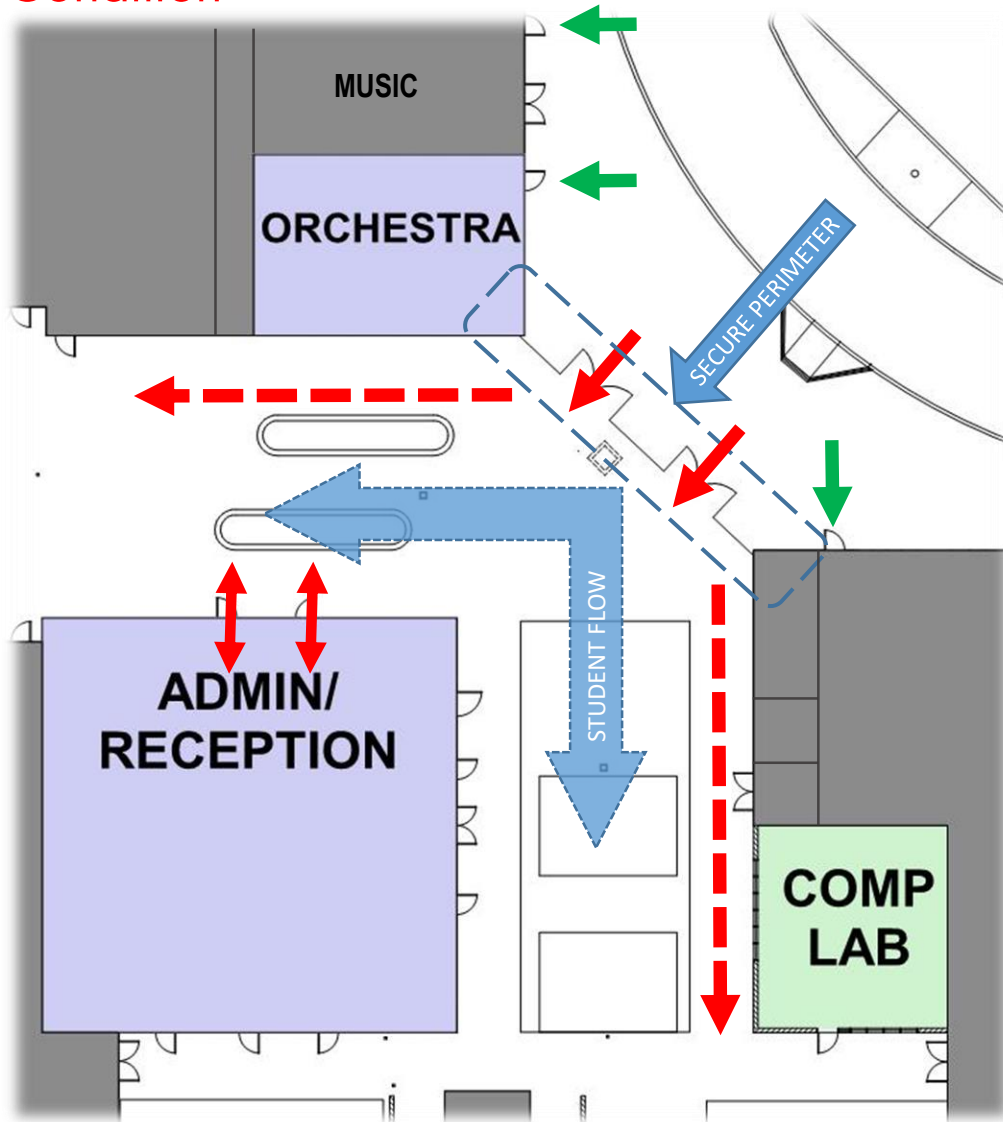


Perimeter security solutions at Main Entry



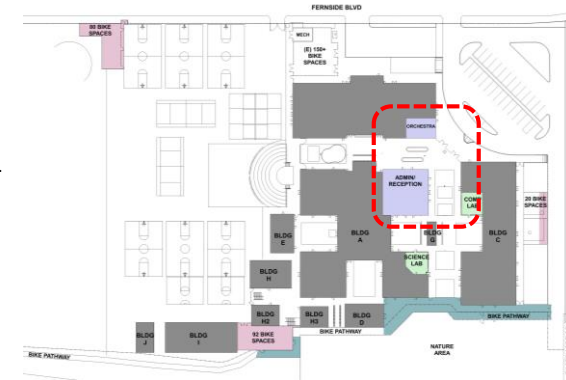
Perimeter security solutions at Main Entry

Existing Condition



Option 1

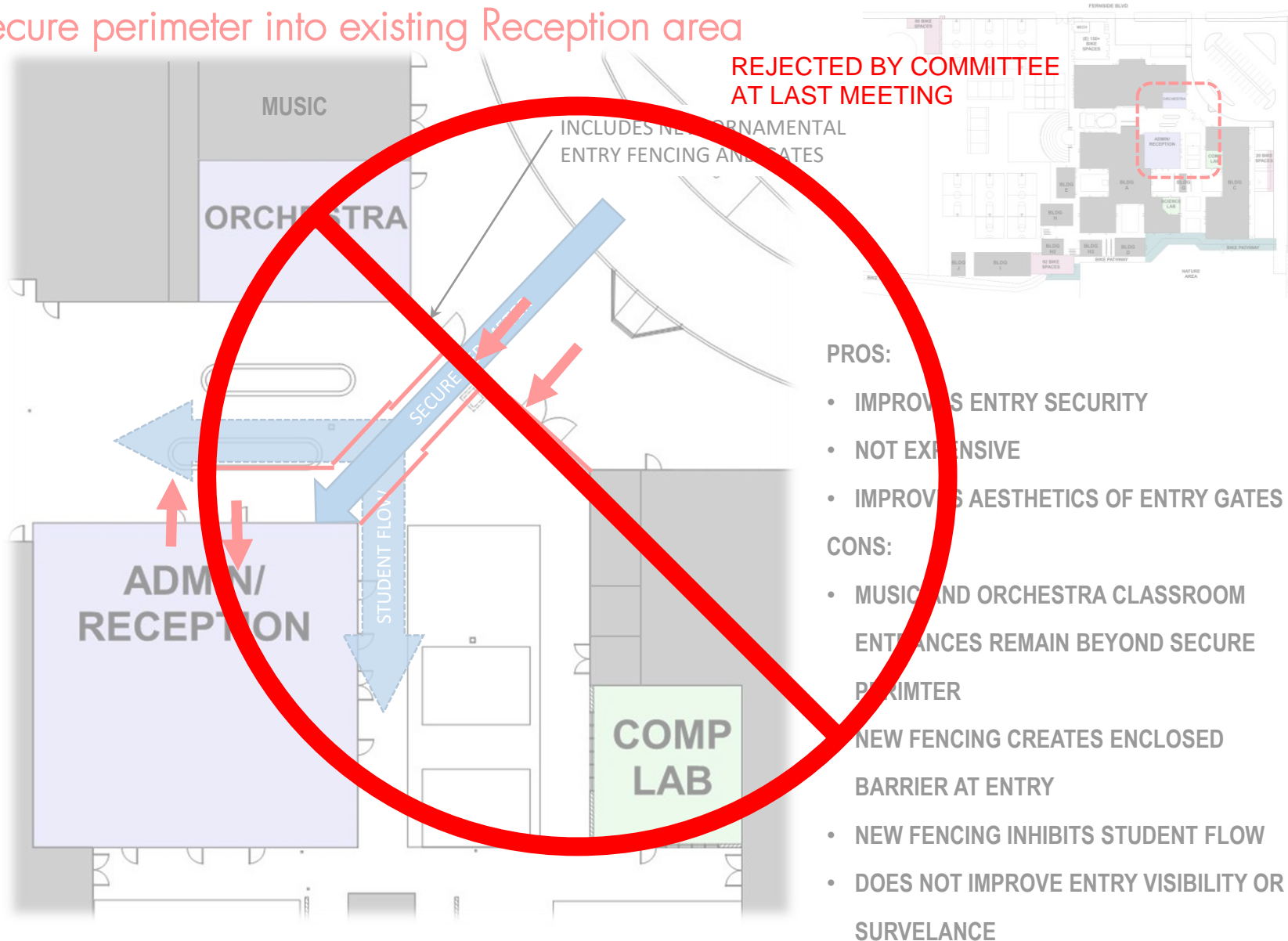
The site plan illustrates the layout of the proposed new building. Key functional areas are color-coded: Music (grey), Orchestra (purple), Admin/Reception (purple), Comp Lab (green), and a central corridor (blue). Circulation is indicated by red arrows for general access and blue arrows for student flow. A 'SECURE PERIMETER' is marked along the right side of the building. A note indicates that the plan includes new ornamental entry fencing and gates.



- IMPROVES ENTRY SECURITY
- NOT EXPENSIVE
- IMPROVES AESTHETICS OF ENTRY GATES

- **MUSIC AND ORCHESTRA CLASSROOM ENTRANCES REMAIN BEYOND SECURE PERIMETER**
- **NEW FENCING CREATES ENCLOSED BARRIER AT ENTRY**
- **NEW FENCING INHIBITS STUDENT FLOW**
- **DOES NOT IMPROVE ENTRY VISIBILITY OR SURVEILLANCE**

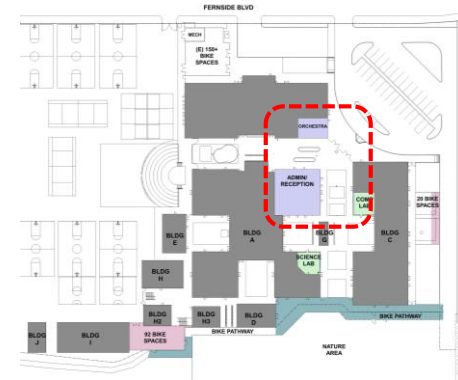
Draw secure perimeter into existing Reception area



The site plan illustrates the proposed layout of the new school building. Key areas include:

- MUSIC** (top center)
- RECEPTION** (center, highlighted in purple)
- ADMIN/** (bottom left, highlighted in purple)
- STUDENT FLOW** (center, indicated by a large blue dashed arrow pointing downwards)
- COMP LAB** (bottom right, highlighted in green)
- SECURE PERIMETER** (indicated by a blue dashed line and a blue arrow pointing to the perimeter fence)
- INCLUDES NEW ORNAMENTAL ENTRY FENCING AND GATES** (indicated by a black arrow pointing to the perimeter fence)

The plan also shows various circulation paths: a red curved arrow indicating a path from the Admin/ area to the Reception area; a red straight arrow pointing from the Reception area towards the center; a green straight arrow pointing from the top right towards the Reception area; a green straight arrow pointing from the top right towards the perimeter fence; a green straight arrow pointing from the perimeter fence towards the Comp Lab; and a green straight arrow pointing from the perimeter fence towards the Student Flow area.

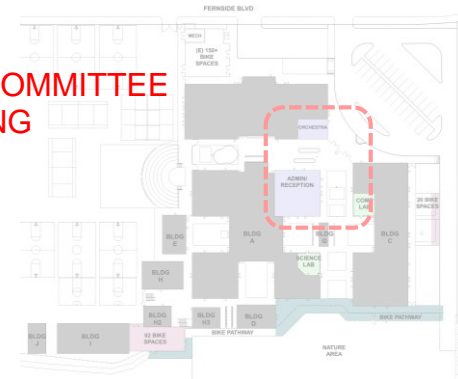


- IMPROVES ENTRY SECURITY
- IMPROVES ENTRY VISIBILITY & SURVELANCE
- IMPROVES AESTHETICS OF ENTRY GATES
- MAINTAINS OPEN STUDENT FLOW

- MUCH MORE EXPENSIVE THEN OPTION 1
- MUSIC CLASSROOM ENTRANCES REMAIN BEYOND SECURE PERIMTER
- SEPARATES RECEPTION FROM ADMIN.

Option 2

REJECTED BY COMMITTEE
AT LAST MEETING



- IMPROVE ENTRY SECURITY
- IMPROVE ENTRY VISIBILITY & SURVEILLANCE
- IMPROVE AESTHETICS OF ENTRY GATES
- MAINTAIN OPEN STUDENT FLOW

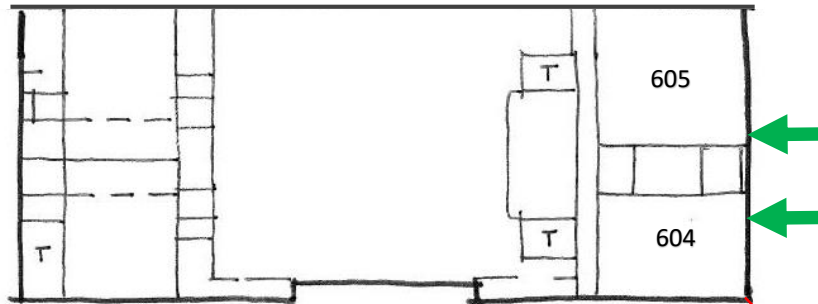
- MUCH MORE EXPENSIVE THEN OPTION 1
- MUSIC CLASSROOM ENTRANCES REMAIN BEYOND SECURE PERIMTER
- SEPARATES RECEPTION FROM ADMIN.

Perimeter security solutions at Main Entry

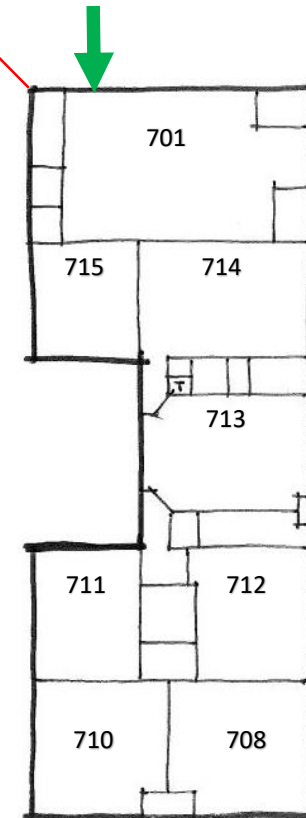
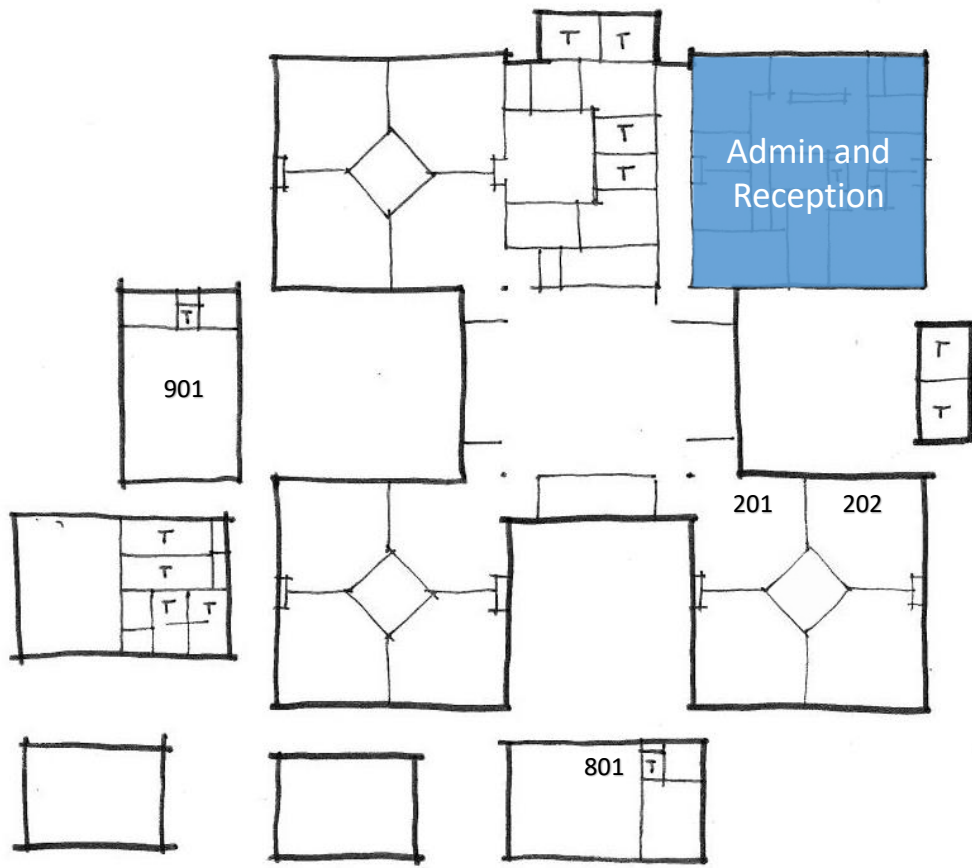


Perimeter security solutions at Main Entry

Existing Conditions

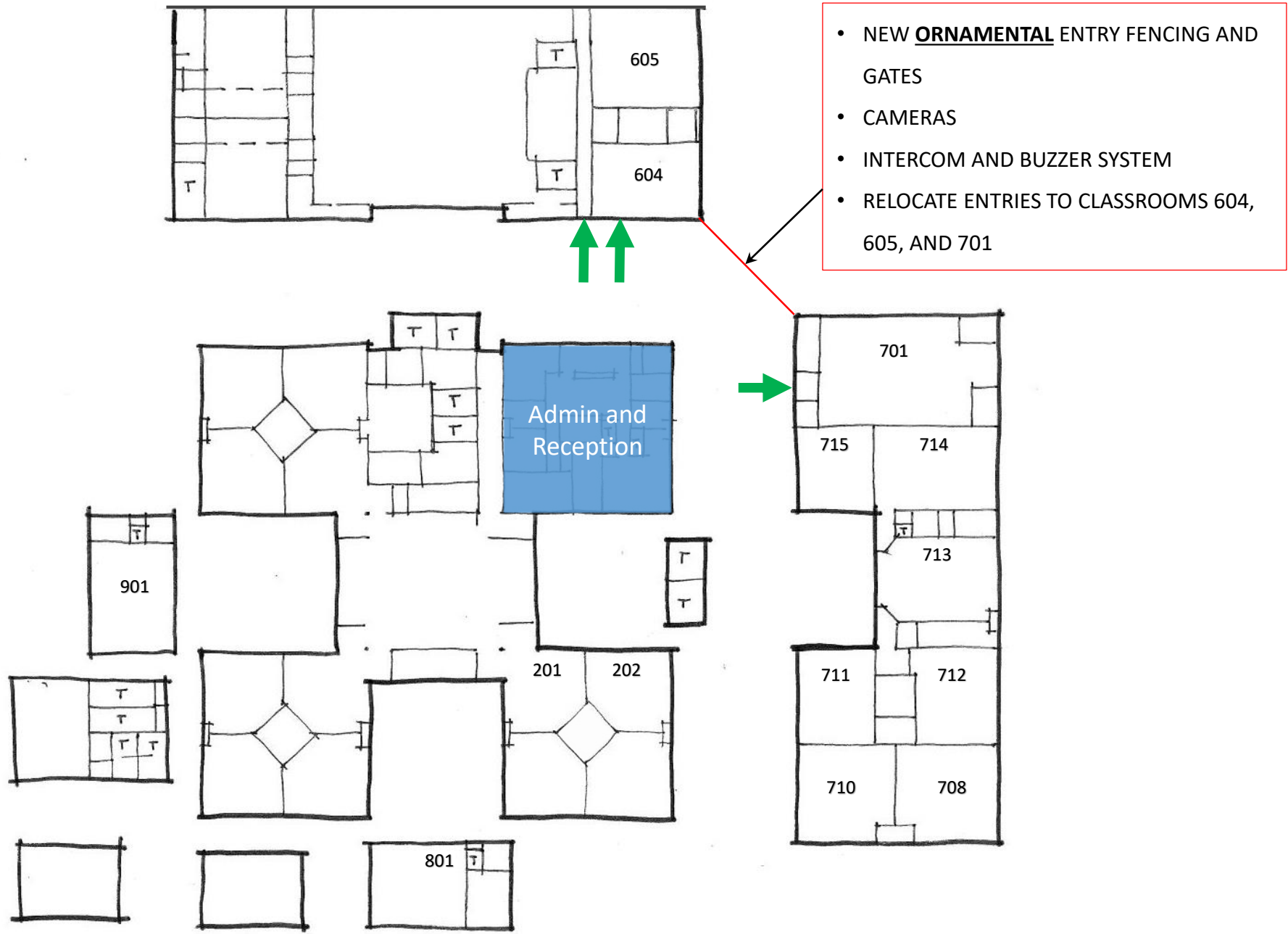


- EXISTING GRAY CHAINLINK FENCING AND GATES REMAIN OPEN ALL DAY
- ENTRIES TO CLASSROOMS 604, 605, AND 701 ARE BEYOND FENCE LINE



Perimeter security solutions at Main Entry

Option 3 – Intercom and Buzzer



Examples of what is and what is not ornamental Fencing



Debris Fence Height is 8'-0" Tall.

Purpose is to protect pedestrians from falling debris from building in event of a structural failure.



Debris Fence Height is 8'-0"
Tall.

Purpose is to protect
pedestrians from falling
debris from building in
event of a structural failure.



Target height for
Ornamental fencing is
6'-0" Tall.

Goal of Committee is
to establish a single
District-wide standard.



Target height for
Ornamental fencing is
6'-0" Tall.

Goal of Committee is
to establish a single
District-wide standard.



Target height for
Ornamental fencing is
6'-0" Tall.

Goal of Committee is
to establish a single
District-wide standard.





GOALS:

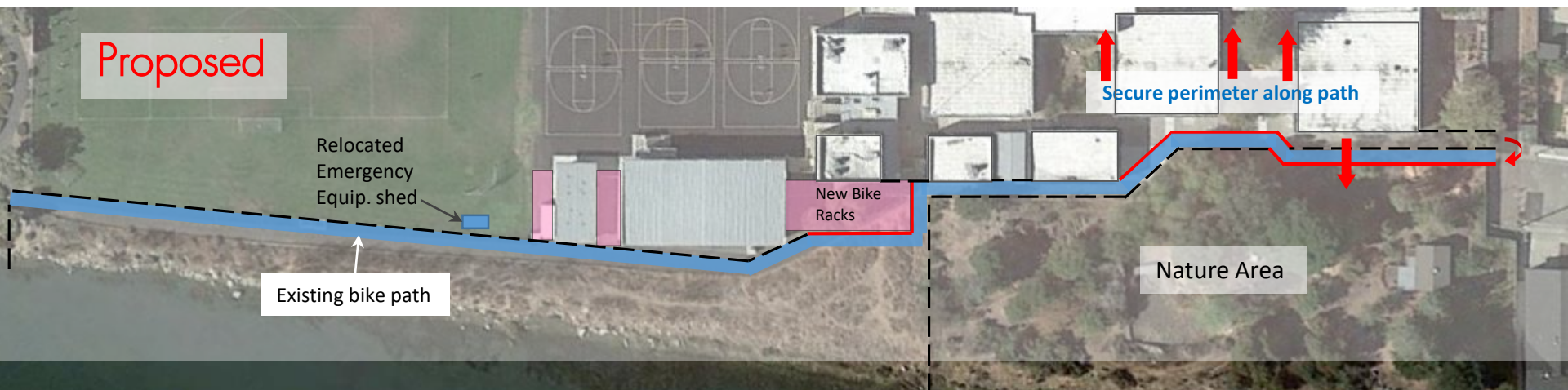
- SECURE PERIMETER FENCING AT BIKE PATH
- SECURE ACCESS TO NATURE AREA
- RELOCATE EMERGENCY EQUIPMENT STORAGE



Perimeter security solutions at bike path

GOALS:

- SECURE PERIMETER FENCING AT BIKE PATH
- SECURE ACCESS TO NATURE AREA
- RELOCATE EMERGENCY EQUIPMENT STORAGE



Lincoln Middle School Modernization

Next Steps

ALAMEDA UNIFIED SCHOOL DISTRICT