

Schematic Design Board Presentation

Measure I Bond Projects

Lincoln Middle School

April 10, 2018



Schematic Design Board Presentation

AGENDA:

Measure I Bond Implementation Plan Project for Lincoln Middle School

- Review Lincoln MS scopes of work as presented in January 2018
- Review direction from the Board in January 2018
- Report back on subsequent Site Committee meetings 7 and 8
- Discuss project cost estimate and schedule
- Receive approval to proceed

AUSD
ALAMEDA UNIFIED SCHOOL DISTRICT
Excellence & Equity For All Students



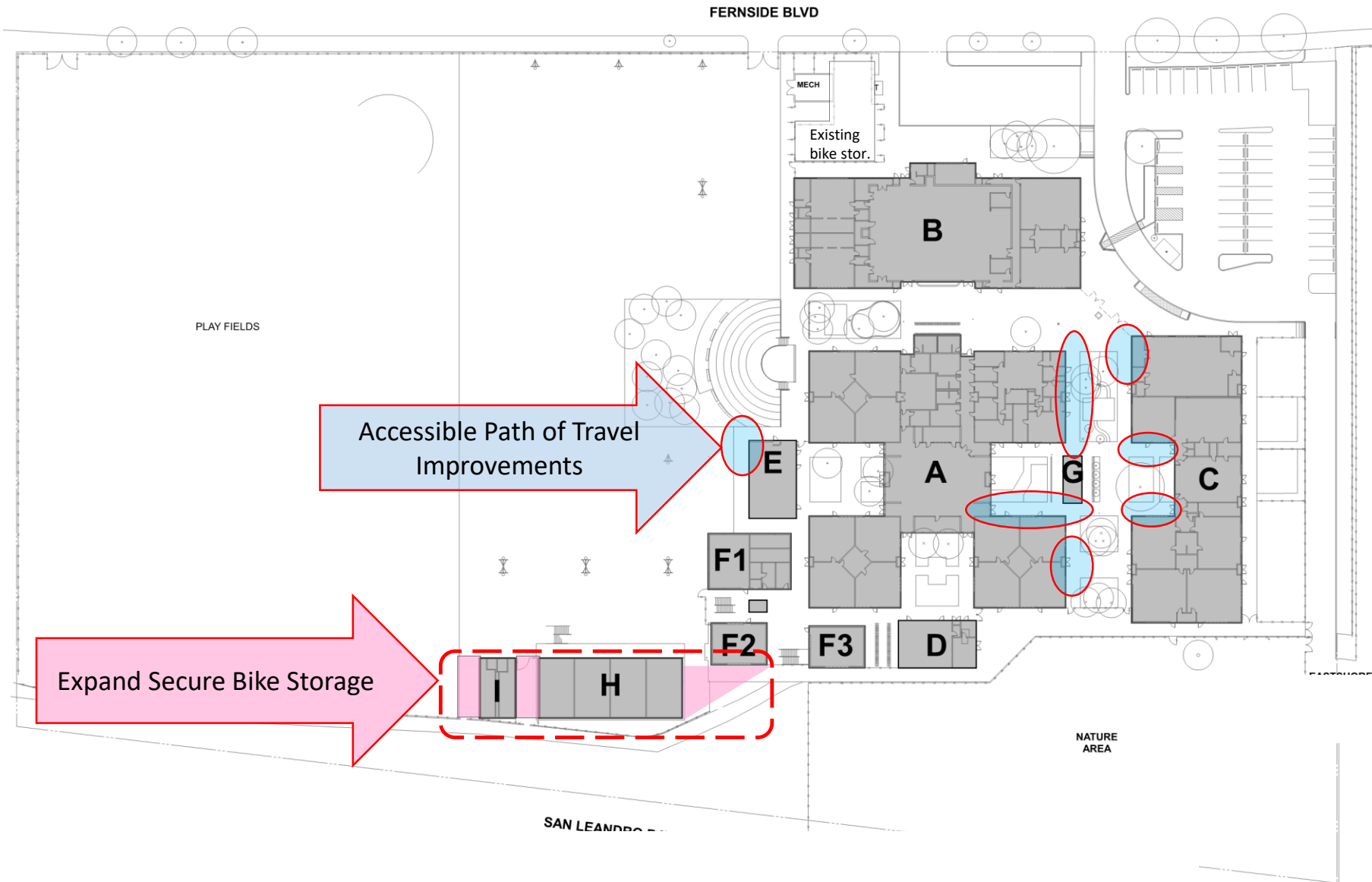
2018 04 10

Lincoln MS Measure I Bond Project

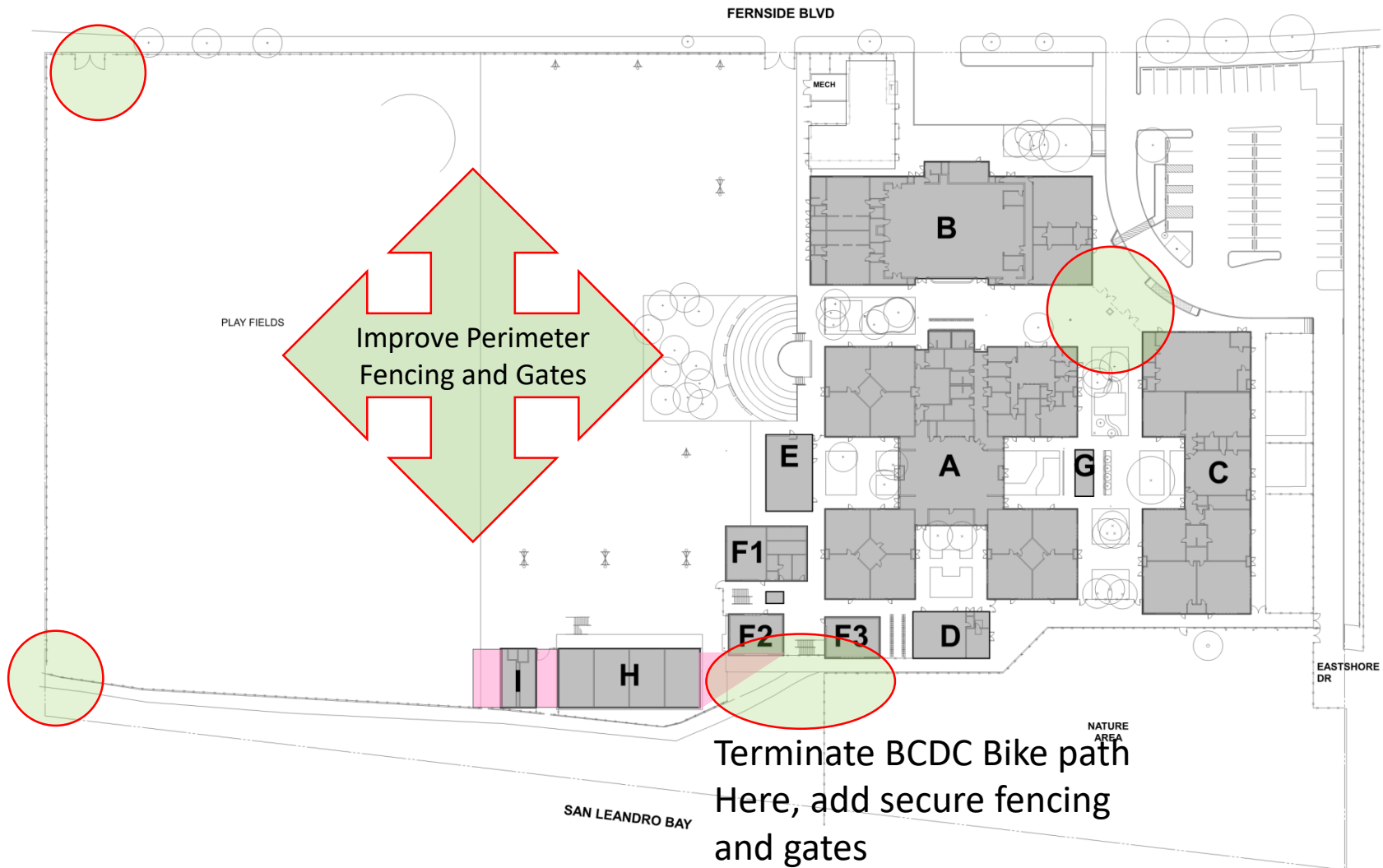
GENERAL SITE IMPROVEMENTS



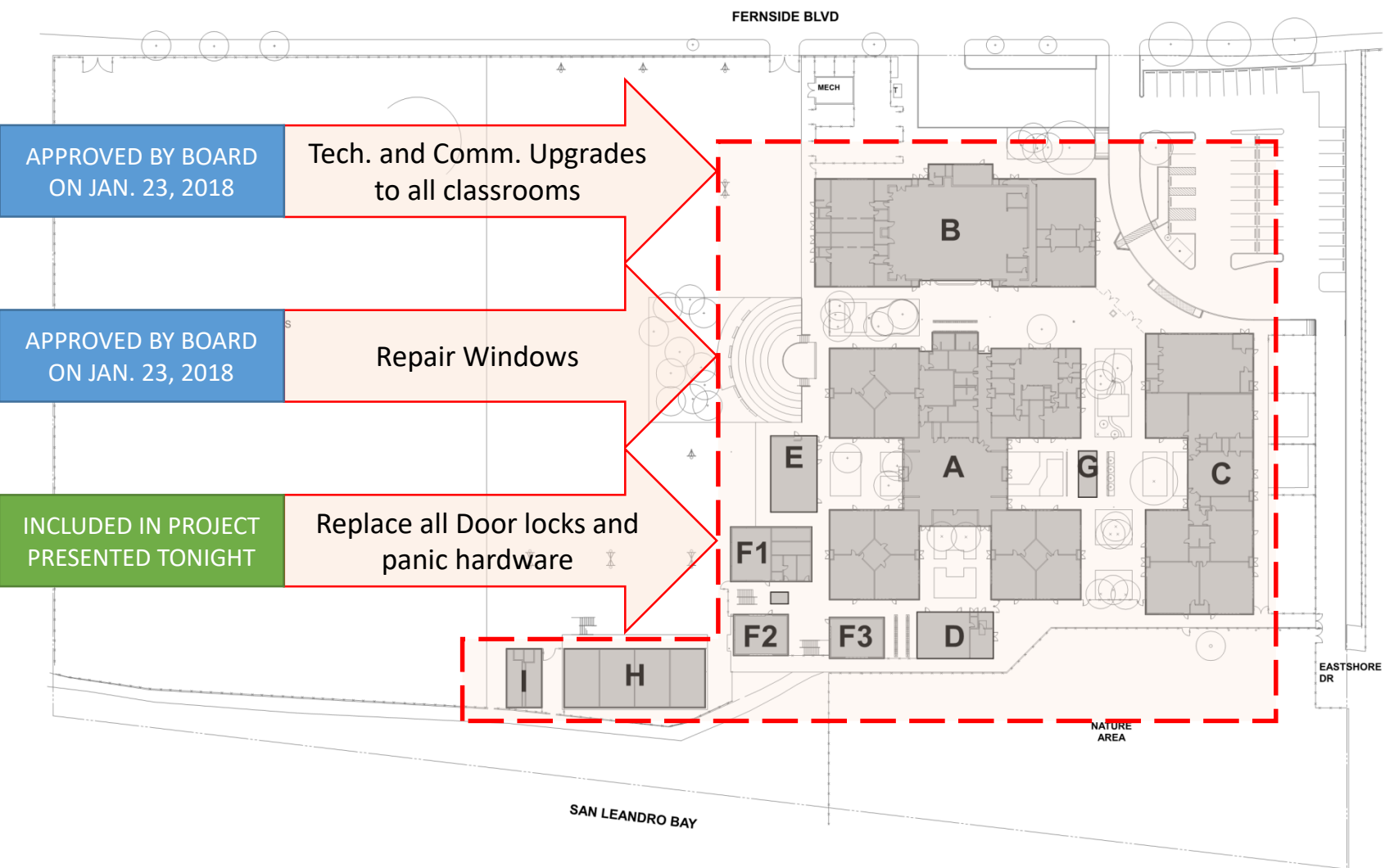
GENERAL SITE IMPROVEMENTS



GENERAL SITE IMPROVEMENTS

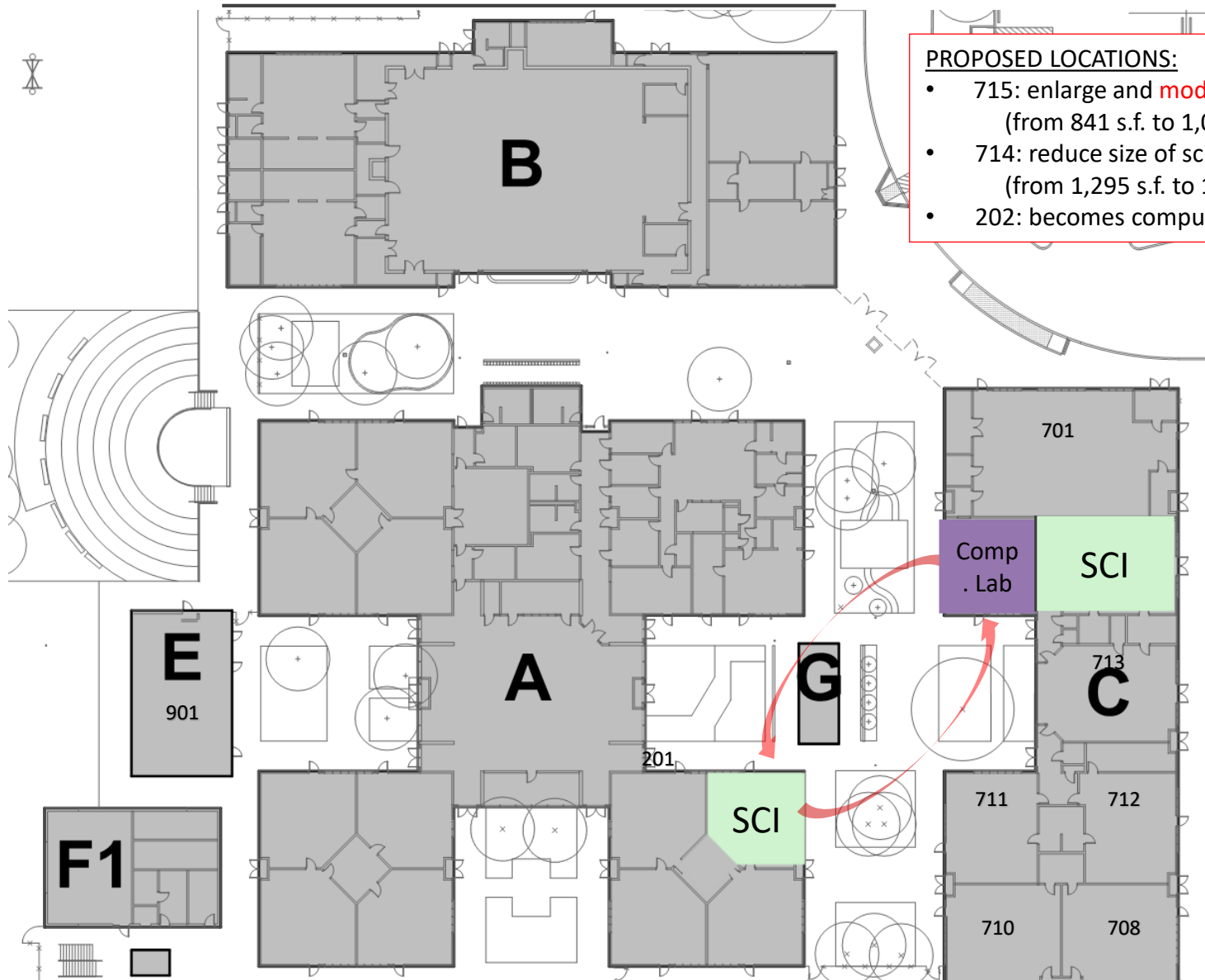


GENERAL BUILDING IMPROVEMENTS



Science lab locations and related work to improve size of Science Lab

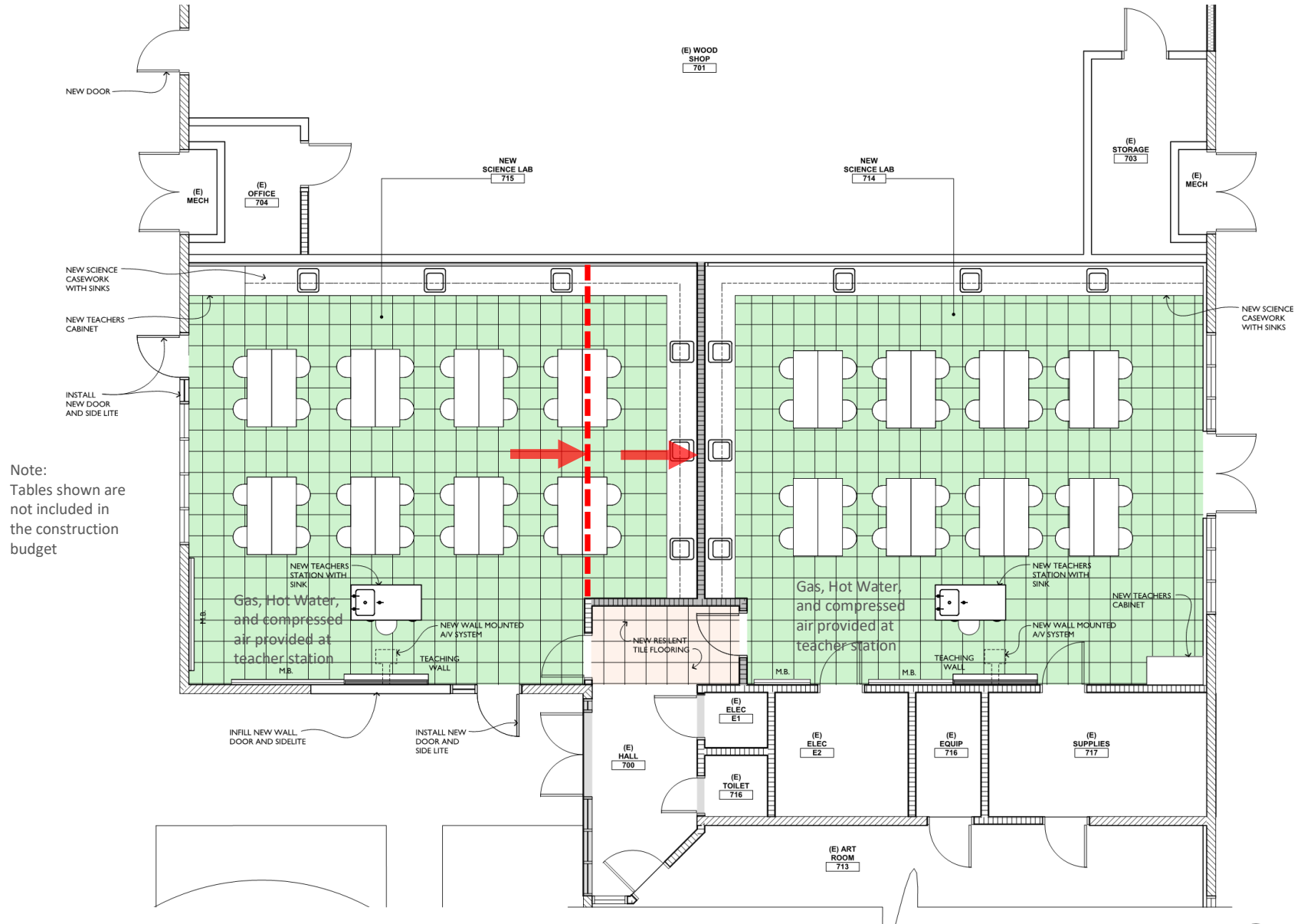
Science and computer lab locations and related work



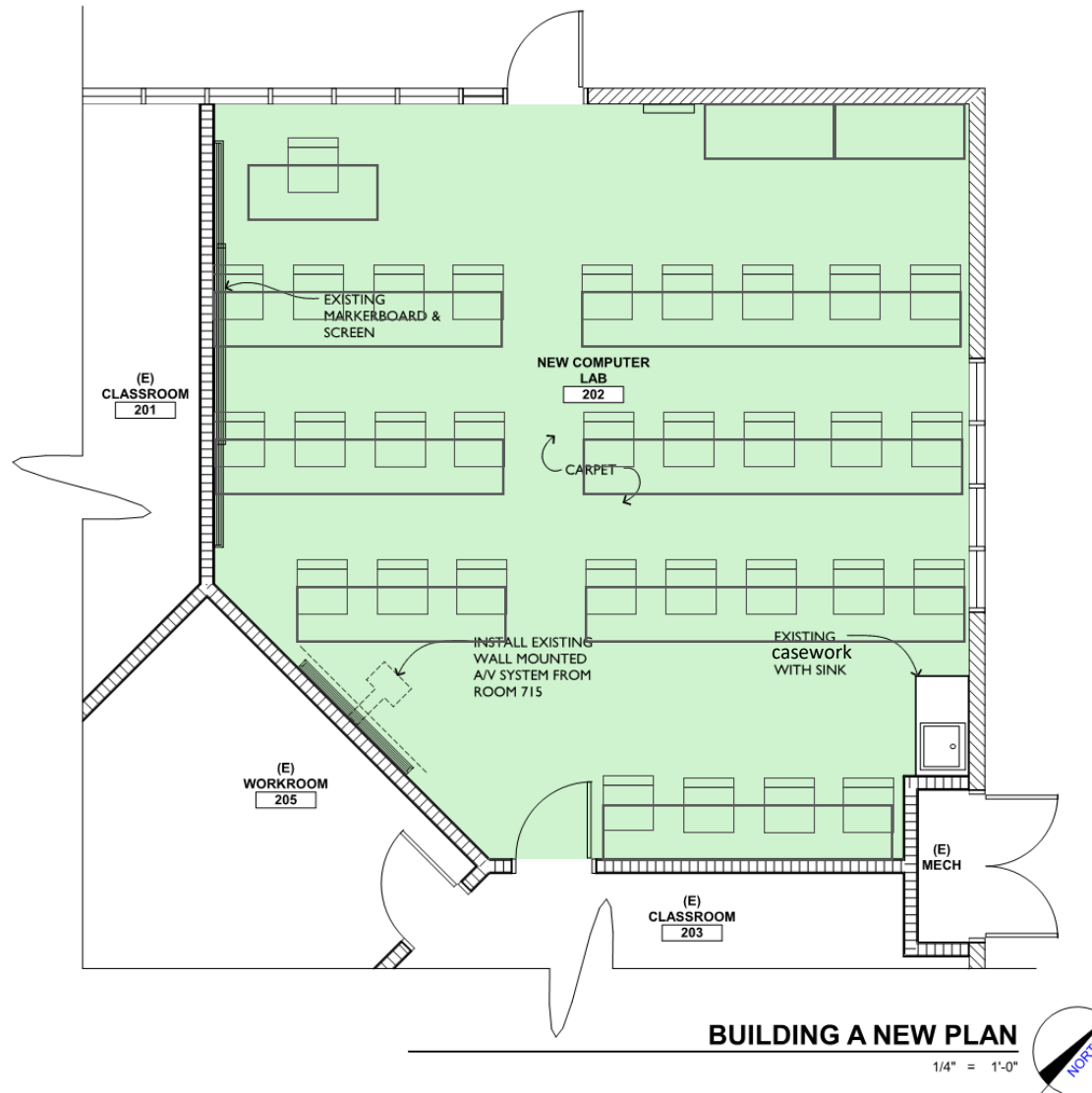
PROPOSED LOCATIONS:

- 715: enlarge and **modernize** into new science lab (from 841 s.f. to 1,060 s.f.)
- 714: reduce size of science lab and **modernize** (from 1,295 s.f. to 1,060 s.f.)
- 202: becomes computer lab – **modernize**

Schematic Design Drawings – New Science Labs



Schematic Design Drawings – Building A Floor Plan at New Comp. Lab



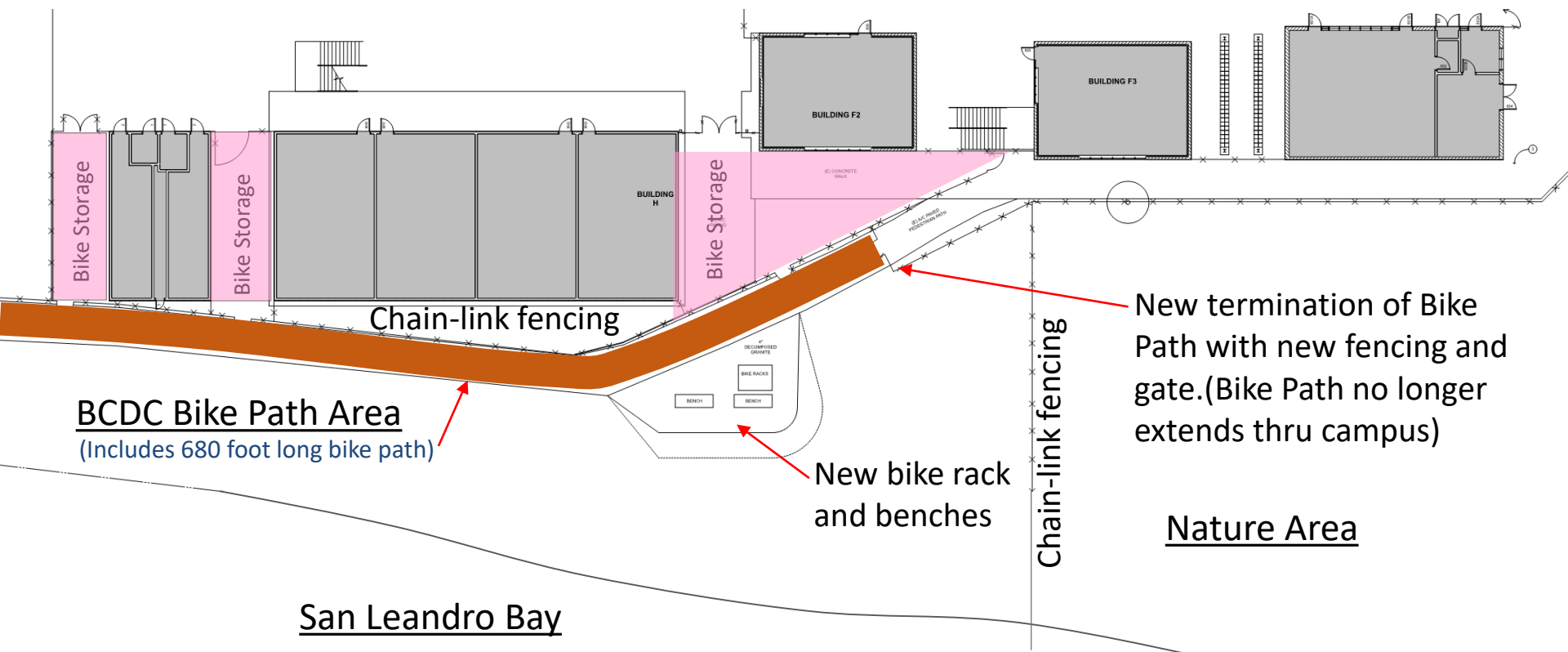
BCDC Bike Path

BCDC Bike Path



BCDC Bike Path

Note:
Thanks to Committee members Jenni Hartigan and Tom Miro who measured the bike path and figured out where it appropriately terminates.



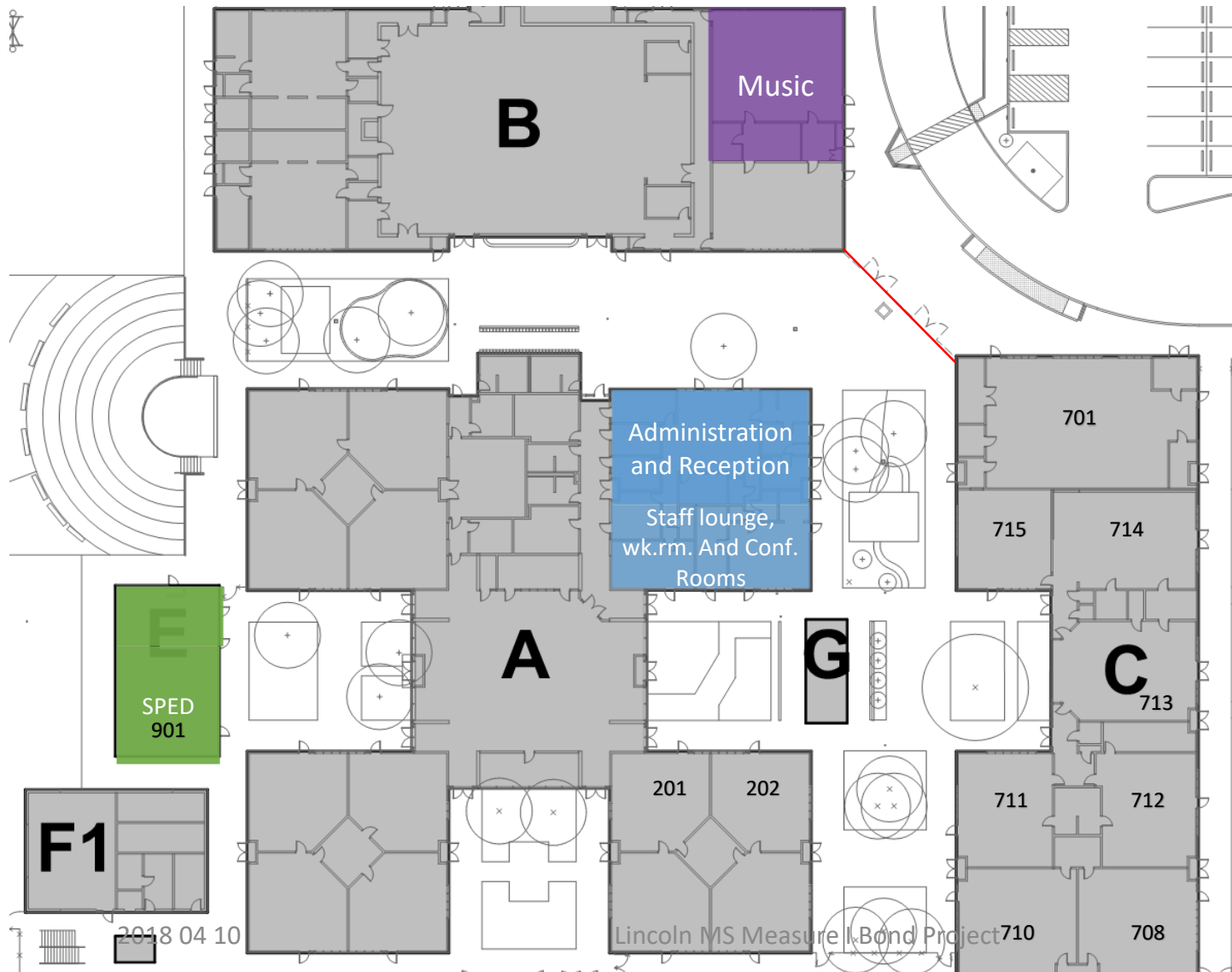
SPECIFIC BUILDING IMPROVEMENTS

Entry Security - Administration location and related work to improve safety and security



Entry Security Options – Brief History (Option 4) and Recap from Last Meeting

Existing locations

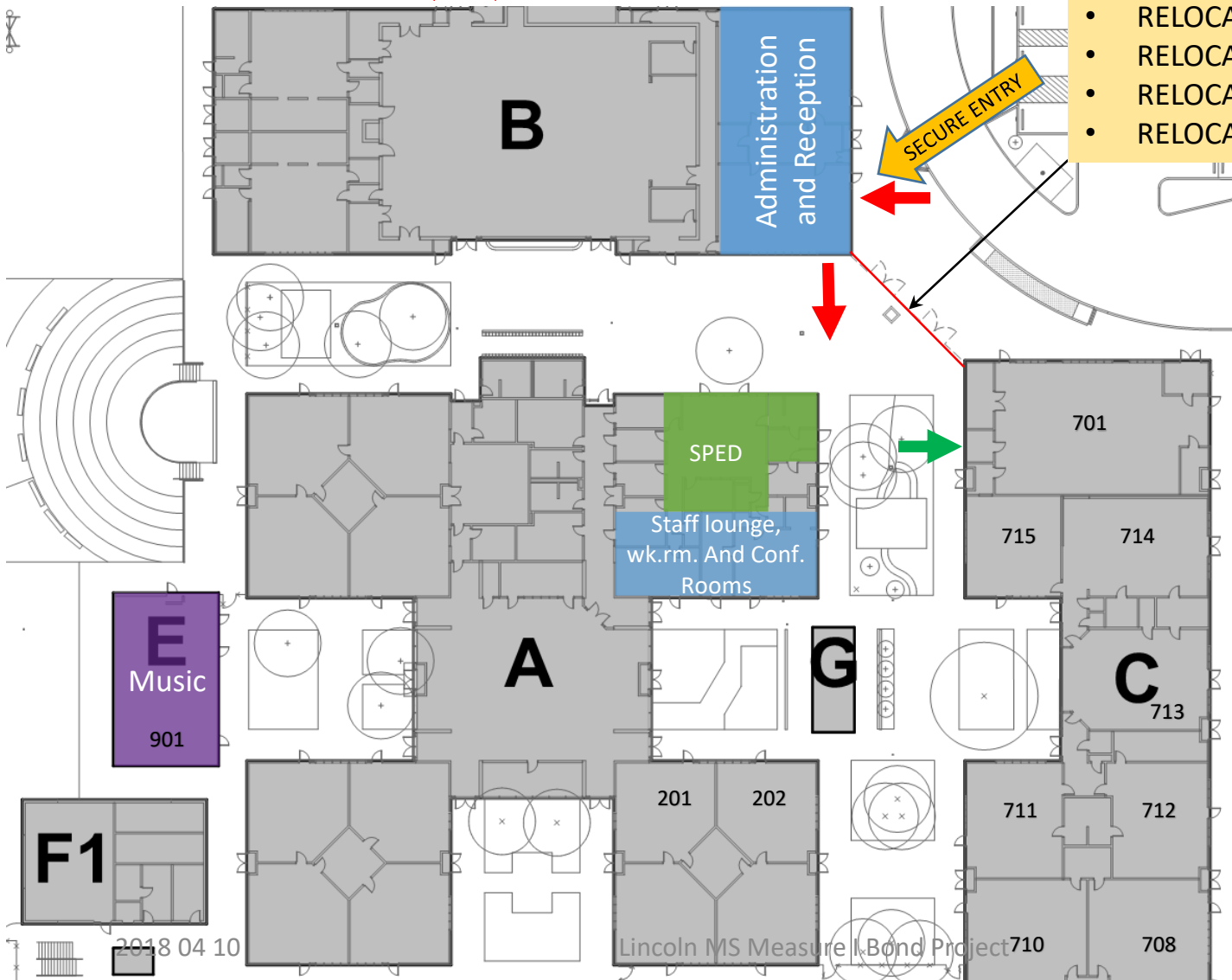


Entry Security Options – Brief History (Option 4) and Recap from Last Meeting

Option 4 – Relocate Reception and Administration

- Approved by committee after Site Committee #6 on 6/6/17
- Presented to Board on 1/23/18

- NEW ORNAMENTAL ENTRY FENCING AND GATES
- RELOCATE ADMIN. AND RECEPTION
- RELOCATE MUSIC CLASSROOM
- RELOCATE SPECIAL ED. CLASSROOM
- RELOCATE CLASSROOM 701 ENTRY

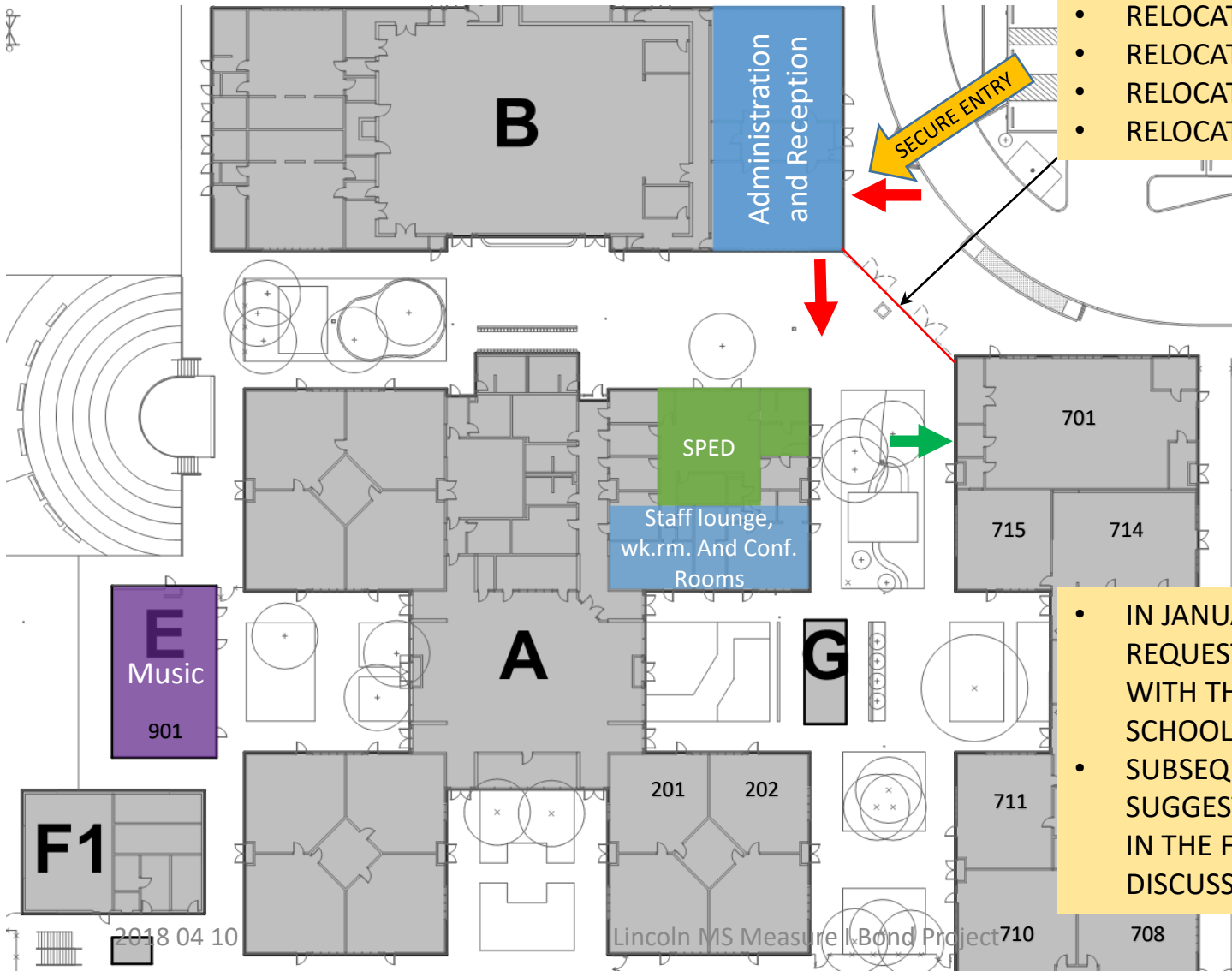


Entry Security Options – Brief History (Option 4) and Recap from Last Meeting

Option 4 – Relocate Reception and Administration

- Approved by committee after Site Committee #6 on 6/6/17
- Presented to Board on 1/23/18

- NEW ORNAMENTAL ENTRY FENCING AND GATES
- RELOCATE ADMIN. AND RECEPTION
- RELOCATE MUSIC CLASSROOM
- RELOCATE SPECIAL ED. CLASSROOM
- RELOCATE CLASSROOM 701 ENTRY



- IN JANUARY THE BOARD REQUESTED FURTHER DISCUSSION WITH THE LINCOLN MIDDLE SCHOOL COMMUNITY
- SUBSEQUENT OPTIONS HAVE BEEN SUGGESTED AND ARE PRESENTED IN THE FOLLOWING SLIDES FOR DISCUSSION PURPOSES

Entry Security Options as discussed with the Site Committee after January 23 Board meeting

Option 4 was revisited:

- Consensus was not reached through additional discussion.

Three additional options were presented by Committee members for consideration over the course of two meetings.

- Consensus was not reached on options 5 or 6.
 - Option 7 was the last option presented and discussed.
 - Consensus was reached on option 7 contingent on a favorable acoustic analysis.
 - Option 7, along with acoustic analysis, is presented today for approval.

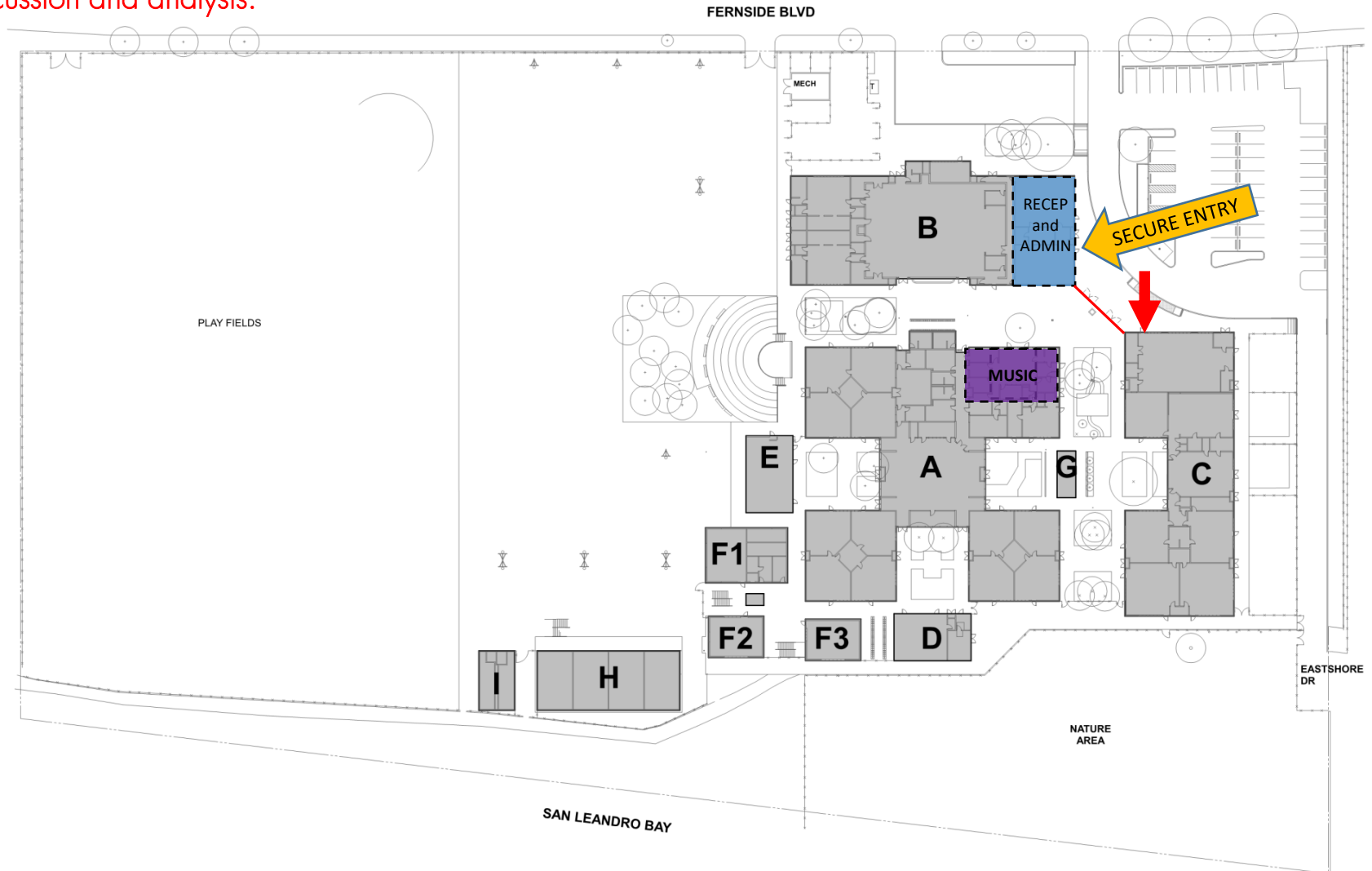
Entry Security Option #7

Option 7 – Move Administration and Reception to Building B and move the Music Classroom to building A. As proposed by Site Committee member via email on March 5, 2018. QKA was directed to develop for further discussion and analysis.



Entry Security Option #7

Option 7 – Move Administration and Reception to Building B and move the Music Classroom to building A. As proposed by Site Committee member via email on March 5, 2018. QKA was directed to develop for further discussion and analysis.

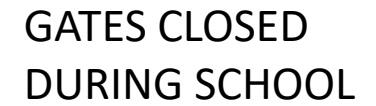


Entry Security Options Proposed After Site Committee Meeting 7

Option 7 – Move Administration and Reception to Building B and move the Music Classroom to building A. As proposed by Site Committee member via email on March 5, 2018. QKA was directed to develop for further discussion and analysis.

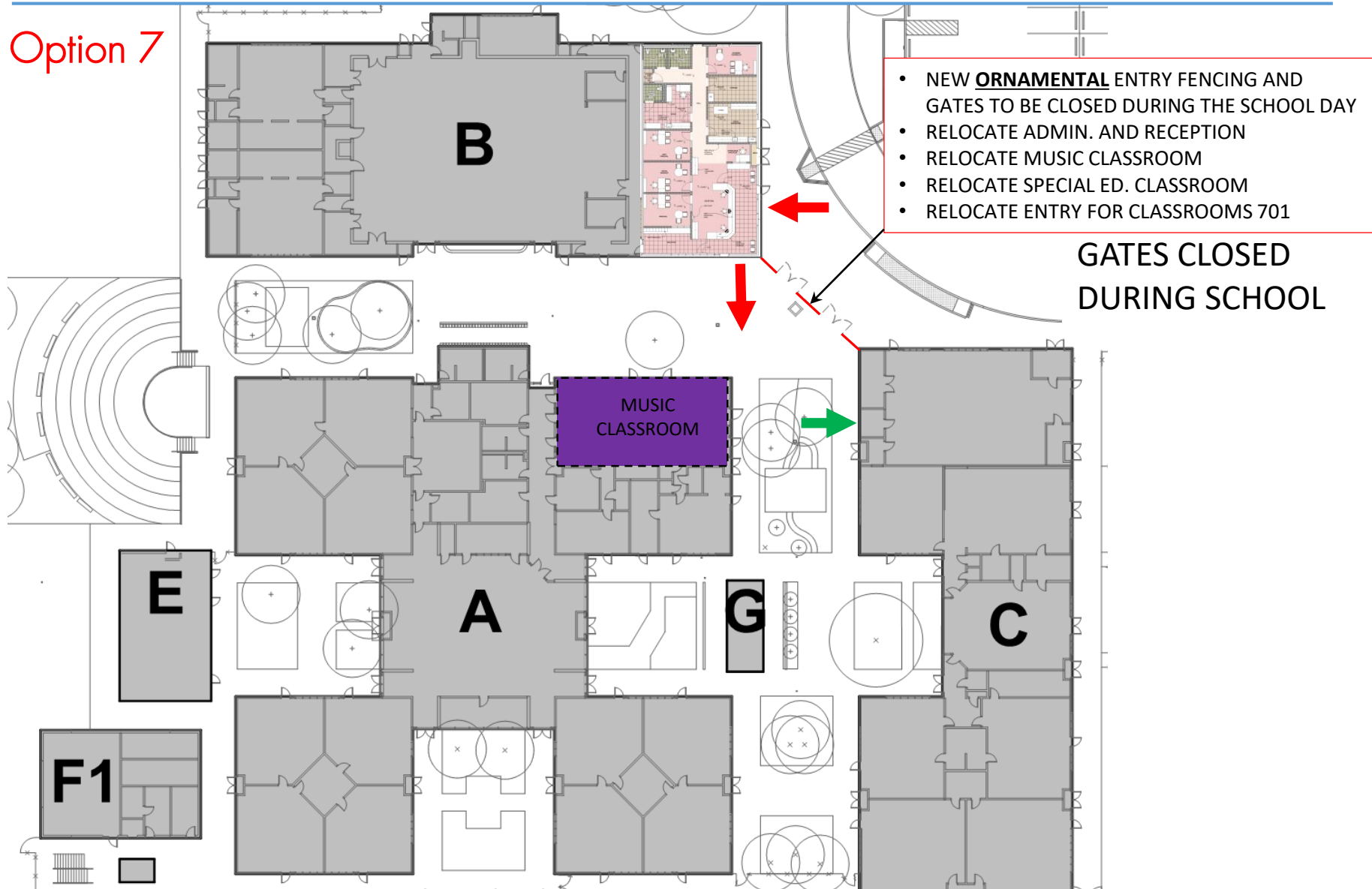


Option 7



Entry Security Option #7

Option 7

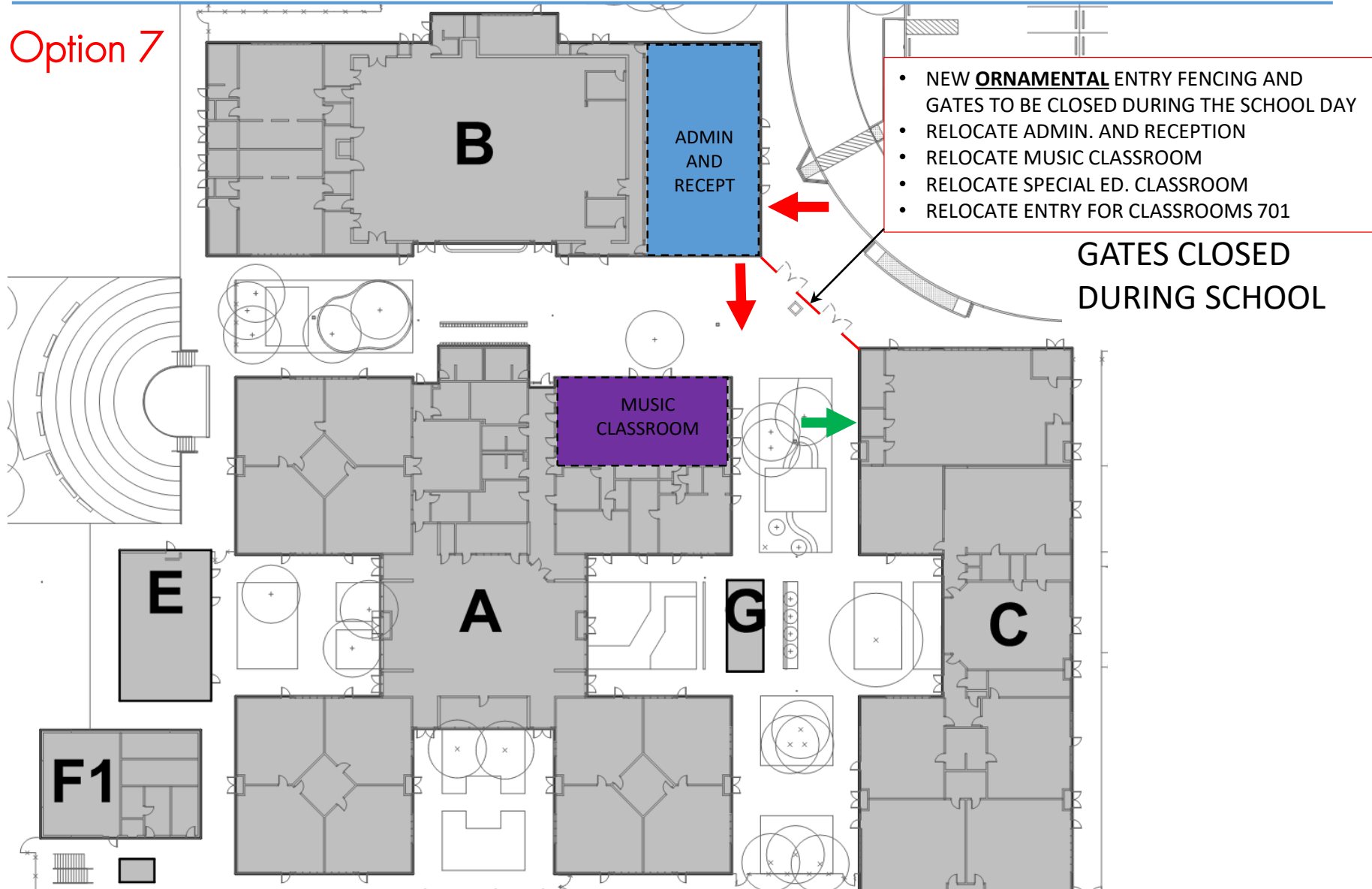


Entry Security Option #7 (Same administration plan as option #4)

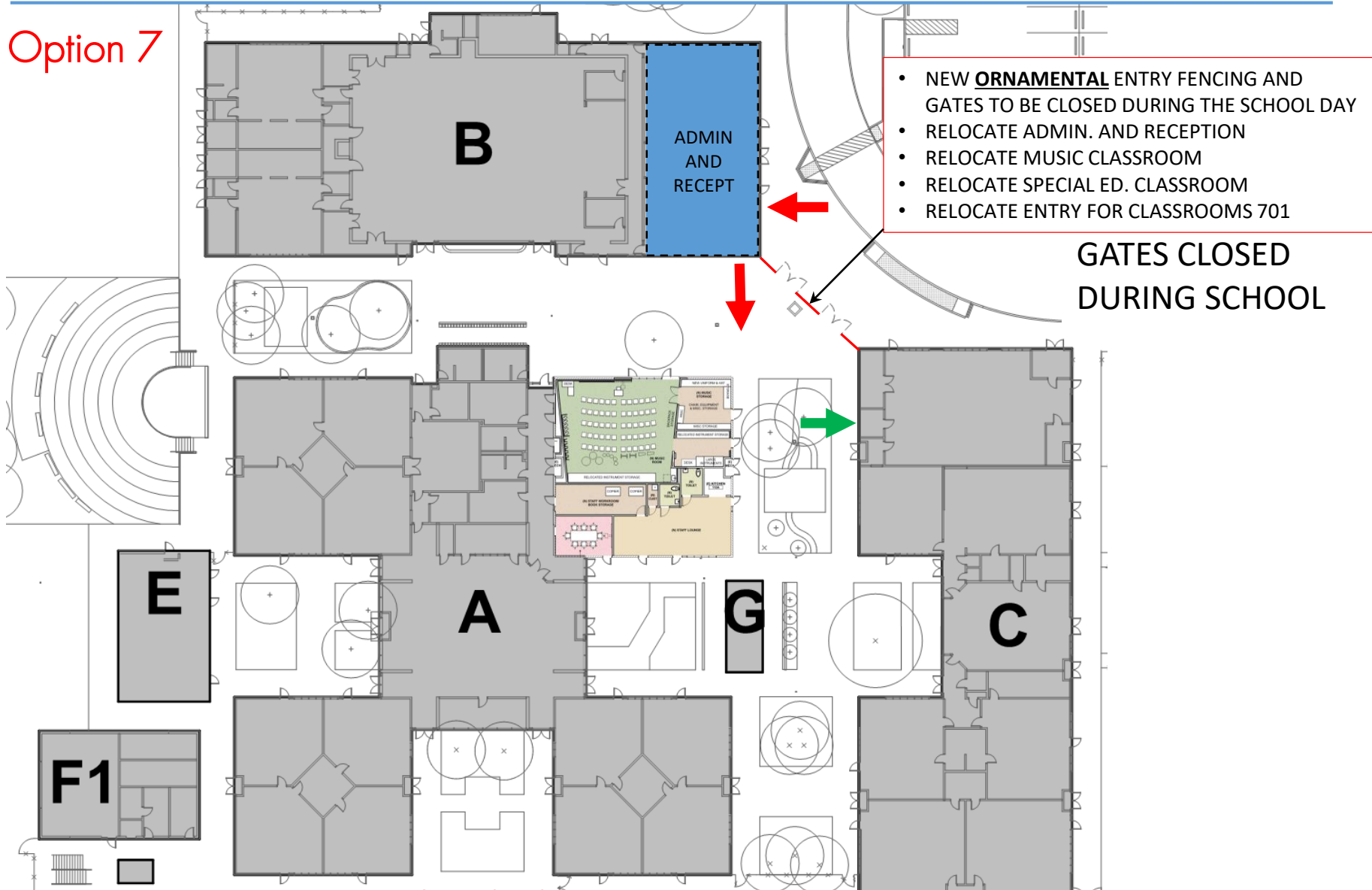


Entry Security Option #7

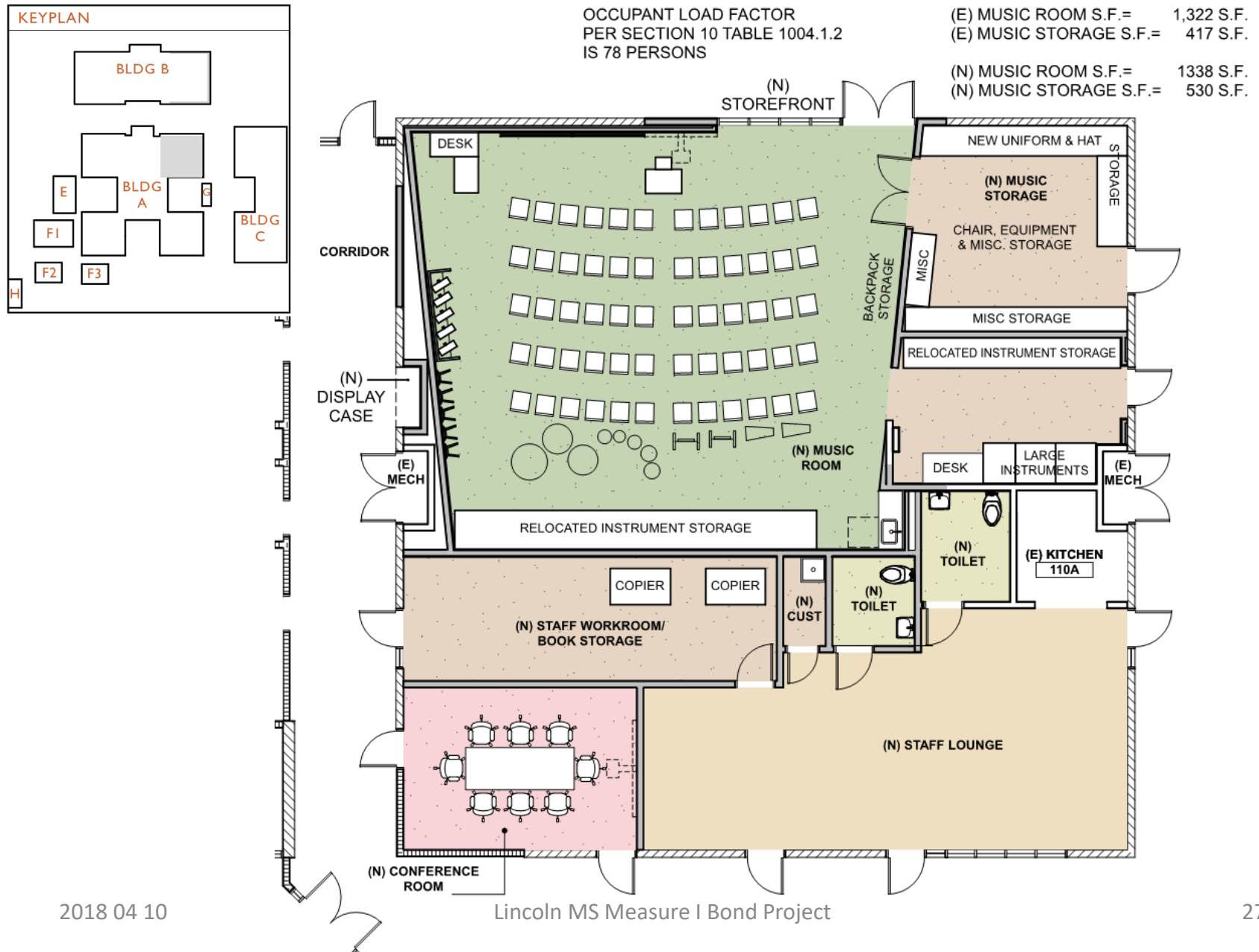
Option 7



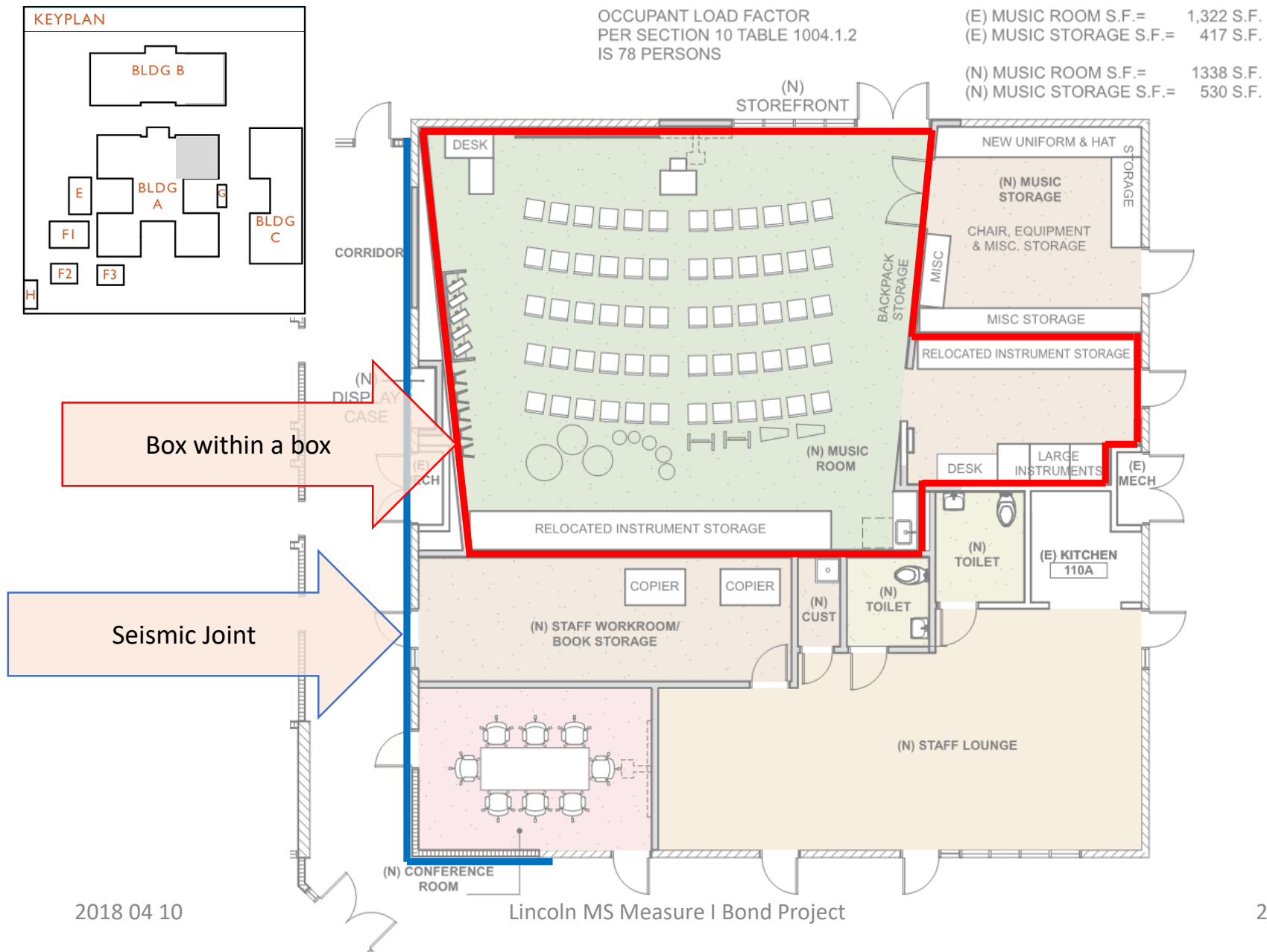
Option 7



Entry Security Option #7 – Building A remodel for Music



Entry Security Option #7 – New Music at Bldg. A – Acoustic Isolation



Entry Security Option #7 – New Music at Bldg. A – Acoustic Isolation



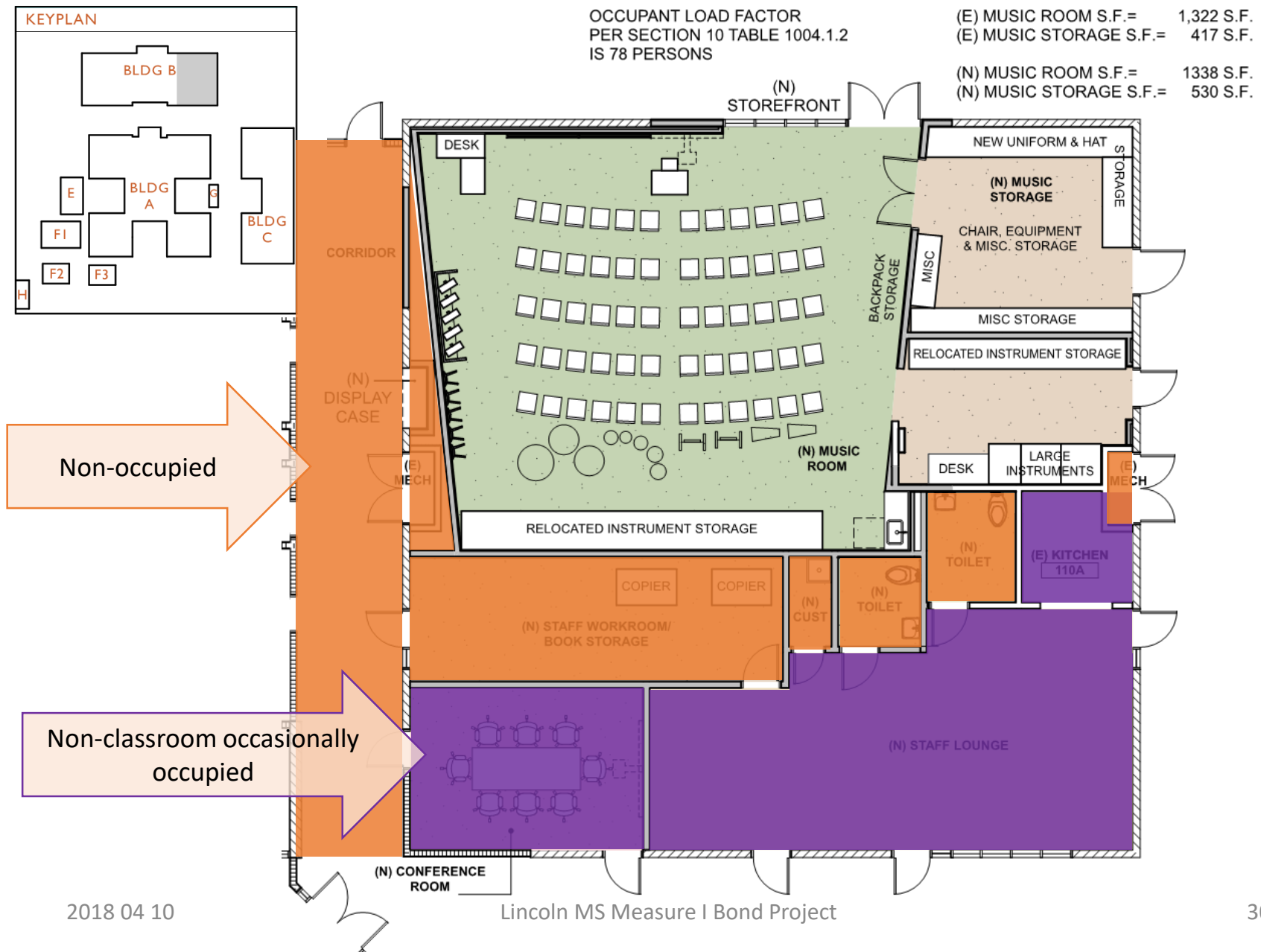
Seismic joint at roof

Seismic joint at ceiling

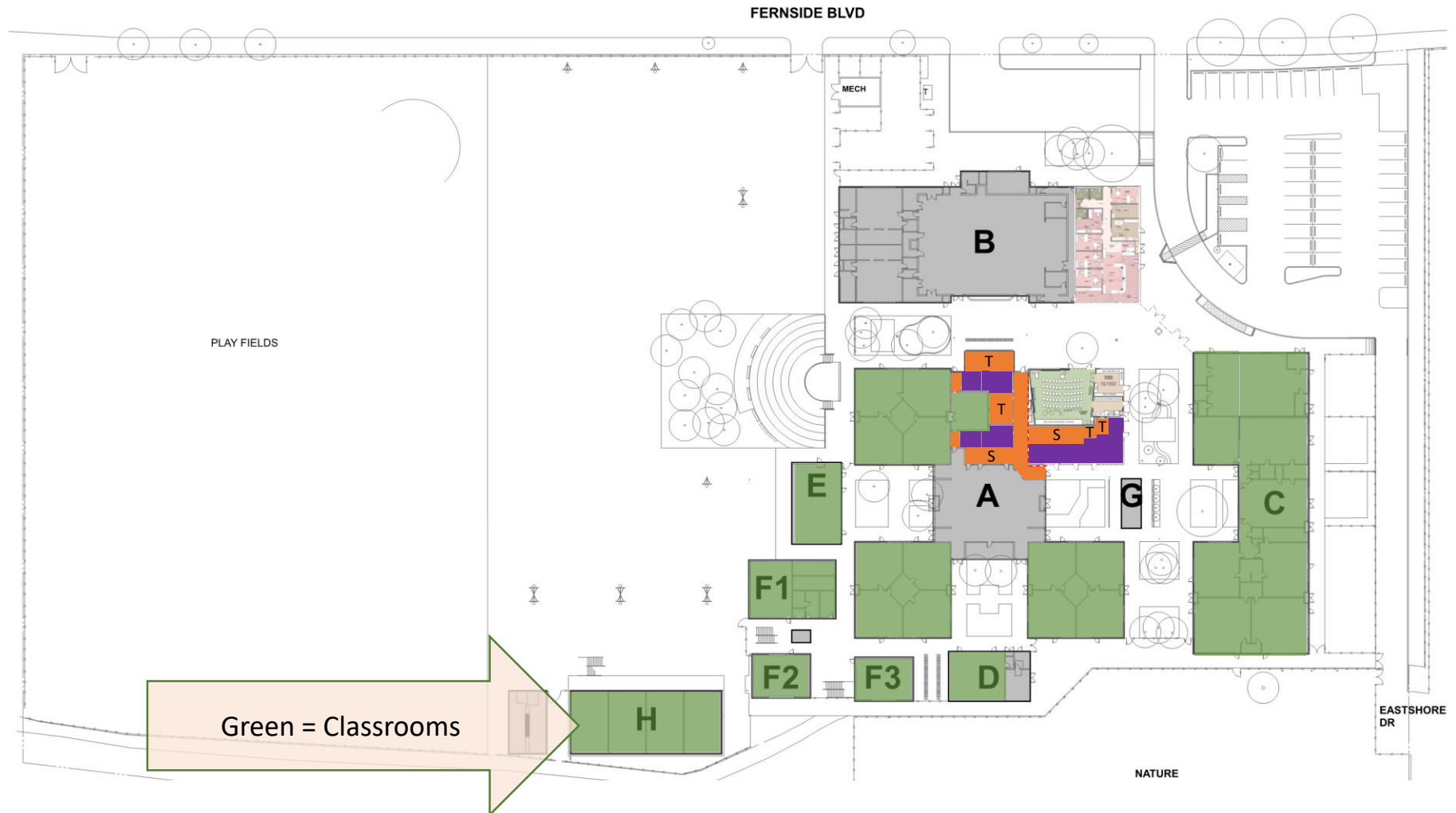
Seismic joint at exterior wall



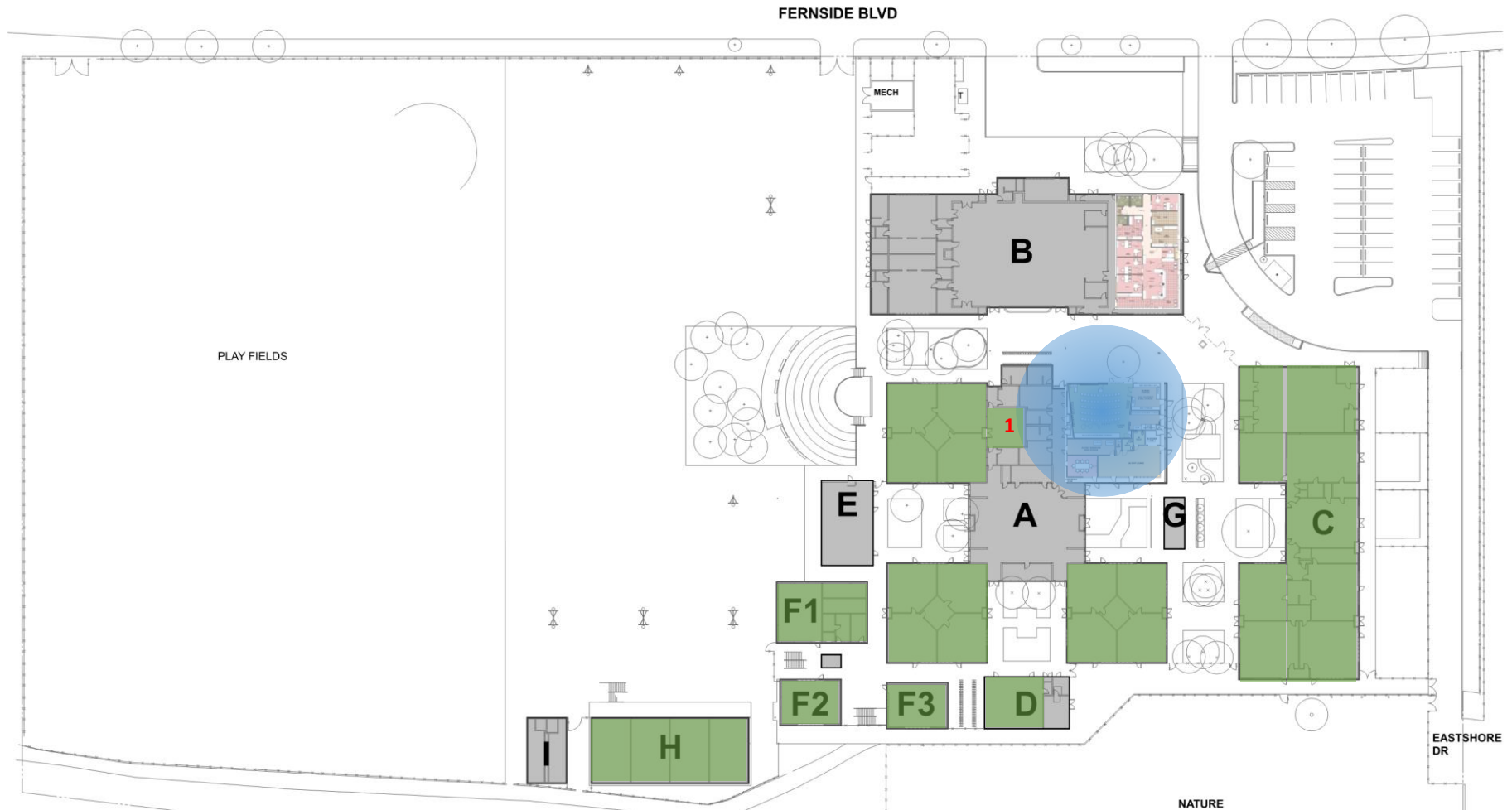
Entry Security Option #7 – New Music at Bldg. A – Acoustic Isolation



Entry Security Option #7 – New Music at Bldg. A – Acoustic Isolation

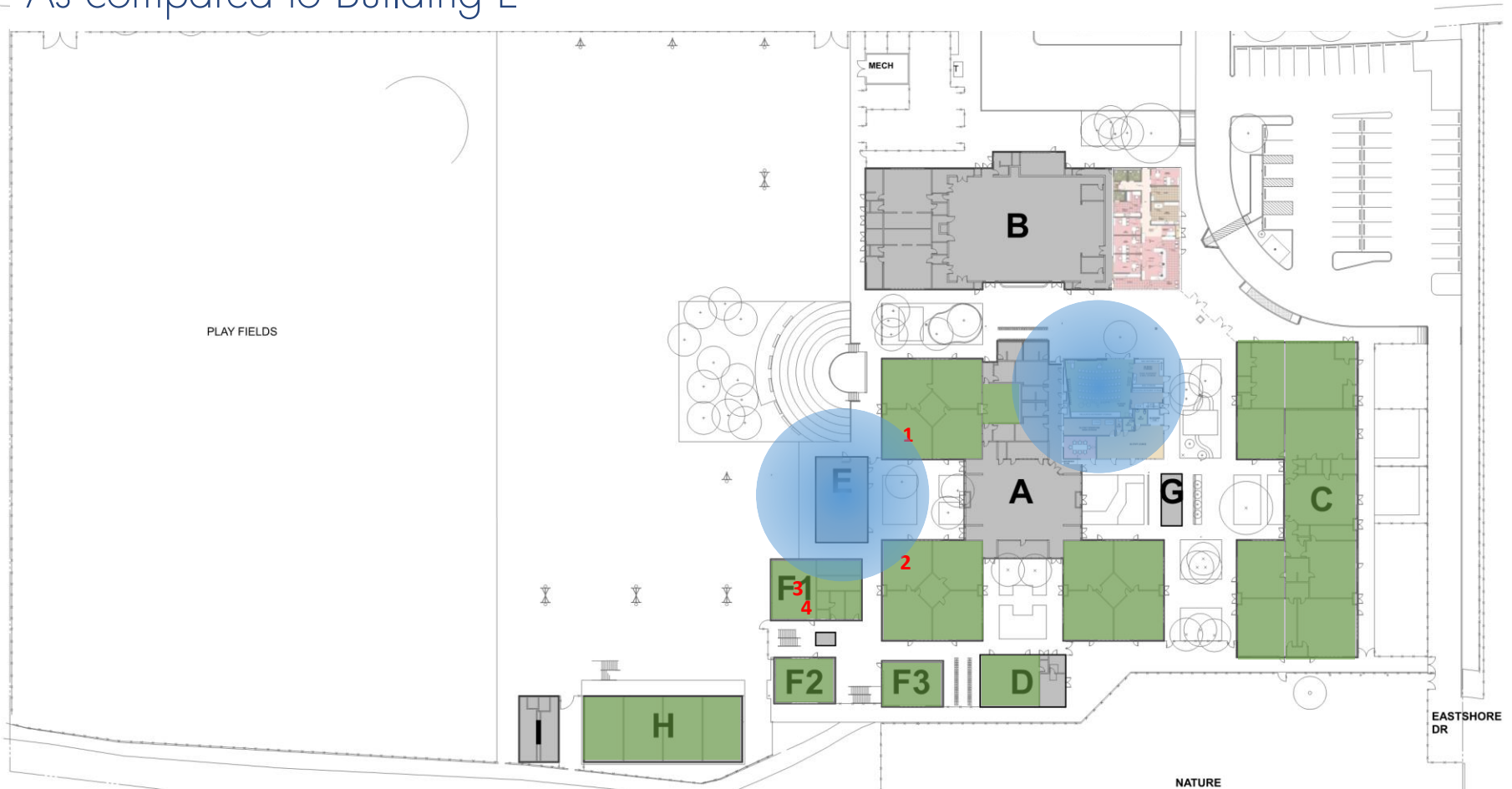


Entry Security Option #7 – New Music at Bldg. A – Acoustic Isolation



Entry Security Option #7 – New Music at Bldg. A – Acoustic Isolation

– As compared to Building E



Entry Security Option #7 – New Music at Bldg. A – Acoustic Isolation

Option 7 – Move Administration and Reception to Building B and move the Music Classroom to building A

Acoustic Engineers Analysis:

Although this can be subjective, we feel that a new music room in the original Administration Pod of Building A can be sufficiently isolated so that music does not bother other Users in Building A.

- The existing pod is constructed of CMU walls and a concrete roof.
- There exists a physical seismic joint between this pod of building A and the balance of the building.
- The addition of a framed/gypsum “box within-a-box” music classroom inside the pod will provide a very high level of (airborne and structure-borne) noise and vibration isolation to adjacent spaces in Building A.

Option 7 presented tonight for your approval

Option 7 presented for approval tonight

Lincoln Middle	Growth: -76	Net Clsrm Chg: 0	Project Budget	\$	6,700,000
Minus 25% soft costs plus cost of 2016 roofing =			Construction Budget	\$	4,976,000
ESTIMATES					
➤ modernize one science and one computer lab				\$	896,328
➤ Technology, communication				\$	733,851
➤ Safety/security (Administration and Music CR swap, and campuswide door hardware, entry fencing)				\$	1,867,497
➤ <u>Critical</u> mechanical, electrical, roofing and accessibility improvements				\$	638,382
				83.12%	\$ 4,136,058
<u>Added during programming and design:</u>					
➤ BCDC bike path improvements				\$	10,010
				83.32%	\$ 4,146,068
BID CONTINGENCY IF BID IN JANUARY				4.00%	\$ 165,843
ESCALATION CONTINGENCY TO SUMMER 2019				12.00%	\$ 517,429
Window repair project to be completed summer of 2018					\$ 637,380
TECHNOLOGY DEVICE ALLOWANCE (FROM AUSD ESTIMATES)					\$ 101,422
				Construction Estimate	\$ 5,568,142
					111.90%

Schematic Design Board Presentation

Measure I Bond Projects

Lincoln Middle School

THANK YOU

April 10, 2018



2018 04 10

Lincoln MS Measure I Bond Project

36