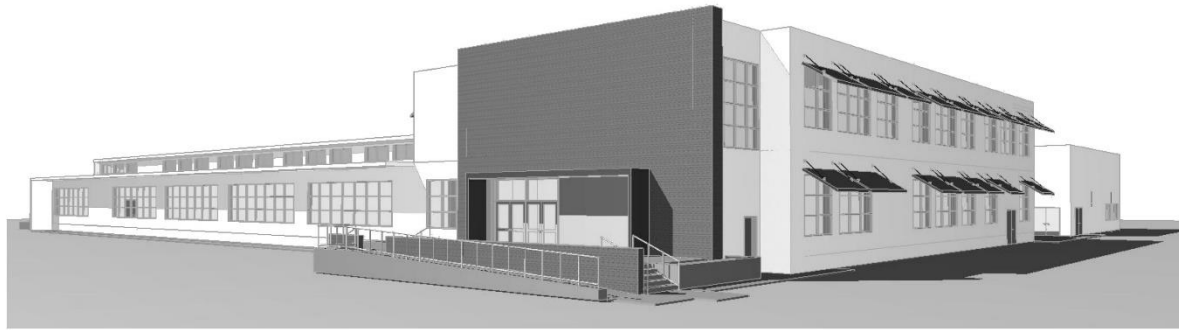


Paden Elementary School

Measure I Bond Project

Site Committee Meeting #04 – Final SD Presentation

September 21, 2016



QUATTROCCHI KWOK
ARCHITECTS



Goals for Todays Meeting

1. Review Priority Lists established in previous meetings
2. Present Final Schematic Design Plans
3. Review Budget
4. Get Site Design Committee Schematic Design Approval



QUATTROCCHI KWOK
ARCHITECTS



Scope of work included in Draft Schematic Design presented in June:

Top Priorities included in current scope*

- New operable windows for temperature regulation and ventilation (in select locations)
- Awnings outside of classrooms (In select locations)
- Path of travel to lower play area
- New and expanded carpet (in original building only)
- Provide Infrastructure for wall mounted AV Technology
- Improve distribution for power and data
- Improve phone system
- Improve Clock/Bell/Speaker system

Additional items in current scope*

- DSA/Code required upgrades:
 - Exterior path of travel upgrades
 - Toilet Room upgrades
- Perimeter fencing (under separate project)
- Select Structural improvements
- Fire Life Safety Upgrades as required
- Exterior and interior emergency lighting

*Priorities established at prior Committee Meetings

*From Board approved Implementation Plan



Scope of work not yet included back in June:

Items not in current modernization scope* (To be implemented as budget allows):

- Additional operable windows for temperature regulation and ventilation
- K/TK toilet rooms that are clean and ventilated
- Window treatment to reduce glare
- Convert computer lab to makerspace
- New and expanded carpet in kindergarten building
- New counters
- Canopies over the kindergarten ext doors
- Interior Painting Exterior painting

*Items established at prior Committee Meetings



Scope of work included in current design

Top Priorities included in draft SD scope*

- New operable windows for temperature regulation and ventilation (in select locations)
- Awnings outside of classrooms (In select locations)
- Path of travel to lower play area
- Remove carpet from classrooms and replace with VCT (Site to purchase rugs)
- Provide Infrastructure for wall mounted AV Technology
- Improve distribution for power and data
- Improve phone system
- Improve Clock/Bell/Speaker system

Top Priorities *added* to current SD scope*

- Additional operable windows for temperature regulation and ventilation
- K/TK toilet rooms that are clean and ventilated
- Window treatment to reduce glare
- Canopies over the kindergarten ext doors

Additional items in current SD scope*

1. DSA/Code required upgrades:
 - Exterior path of travel upgrades
 - Toilet Room upgrades
2. Perimeter fencing (under separate project)
3. Select Structural improvements
4. Fire Life Safety Upgrades as required
5. Exterior and interior emergency lighting

*Priorities established at prior Committee Meetings

*From Board approved Implementation Plan



SCHOOL SITE PLAN

Elementary School Modernization

(E) ADMIN/CLASSROOM BLDG
DSA APP # 10248 & 102033

(E) MEDIA CENTER
DSA APP# 54985

(E) CLASSROOMS
DSA APP# 54985

(E) PORTABLES
DSA APP# 66119

(E) MULTI-PURPOSE RM
DSA APP# 54985

(N) AC PAVING

REPLACE NON-CONFORMING AC W/ CONCRETE PARKING AT STALLS

REMOVE (E) PREPARE SUBGRADE & REPLACE NON-CONFORMING CONCRETE

(E) CURB TO REMAIN

(E) DROP OFF TO REMAIN

(E) CONC WALK W/ (N) RAMP & CHAIRLIFT HANDRAIL

(E) KMF SHEDS N.I.C.

RECONSTRUCT RAMP & EXTEND ON GUARD & HAND RAIL

ELEVATION SIDE AND CORNERS ARE NOT ACCESSIBLE

REMOVE SHED TOO CLOSE TO BUILDING FOR NO FIELD ACT

ADD CONC WALKS TO PORTABLES TO CREATE ACCESSIBLE P.O.T.

REPLACE NON-CONFORMING AC W/ CONCRETE SLOPED WALK

2 STORY

1 STORY

25' MAX SLOPE

JULY 2016

GENERAL NOTES:

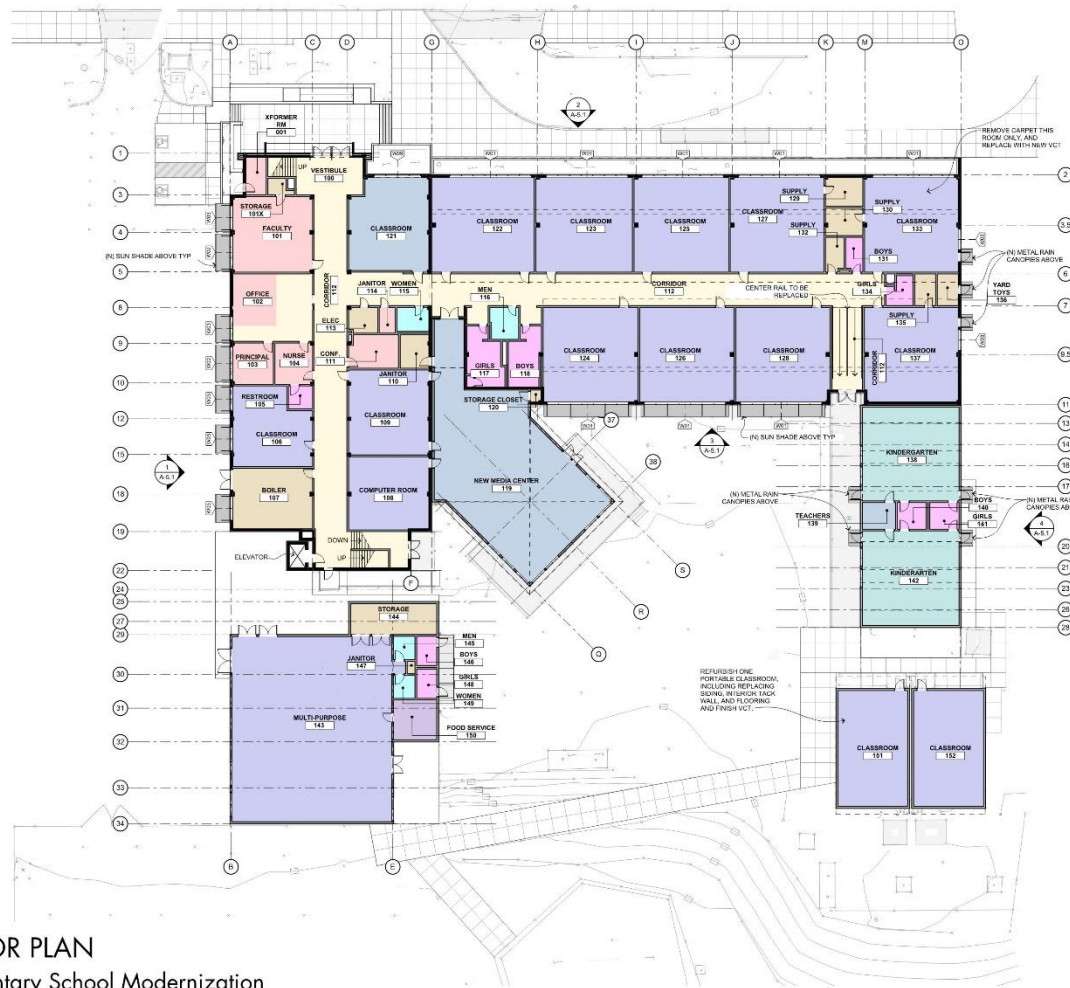
1. ENLARGED TOILET ROOM PLANS ON SEPARATE SHEET

LEGEND

| | |
|--|--------------------|
| | (N) CONC FLAT WORK |
|--|--------------------|



Interior Improvements – First Floor



GENERAL NOTES:

1. INSTALL NEW MECO SHADES AT ALL CLASSROOM WINDOWS. SEE ELEVATIONS.
2. FOR ENLARGED TOILET ROOM PLANS SEE SEPARATE SHEET

TECHNOLOGY & COMMUNICATION GENERAL
NOTES; TYP IN EA CLASSROOM

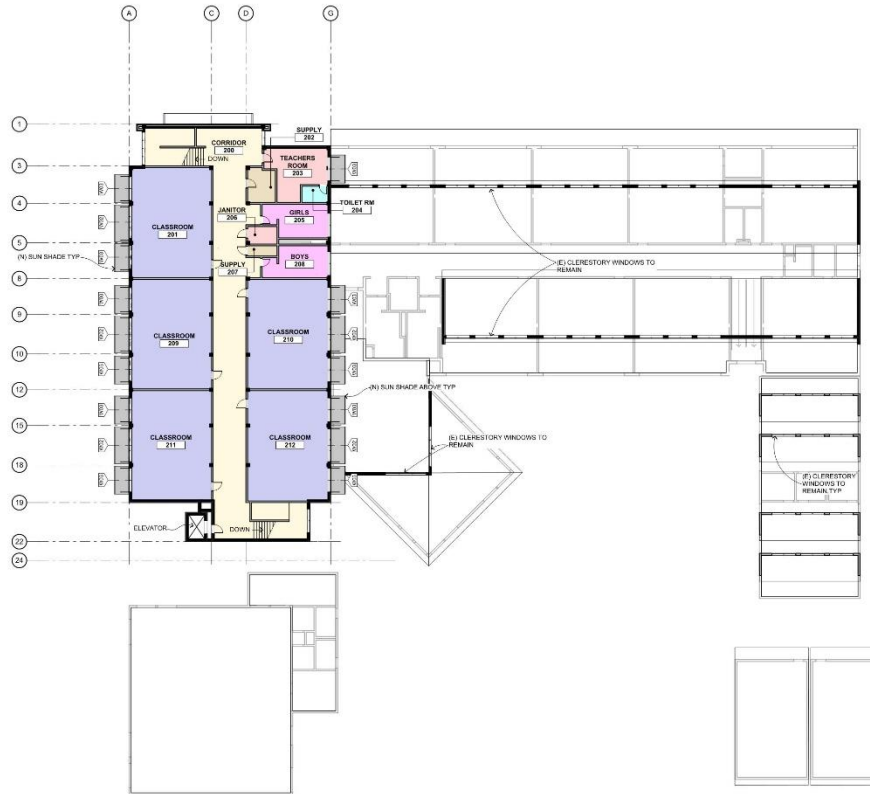
1. NEW POWER AND DATA INFRASTRUCTURE FOR:
 - SHORT THROW PROJECTORS @ TEACHING WALLS (1 PER CLASSROOM)
 - 2 CEILING MOUNTED SPEAKERS FOR SOUND AMPLIFICATION
 - 2 A/V CONTROL PANELS
 - 4 DATA DROPS
 - 1 WI-FI HUB
 - 8 DUPLEX OUTLETS, 2 PER WALL
 - (N) CLOCK / BELL / SPEAKER

LEGEND:

| | |
|---|------------------------|
|  | CLASSROOM |
|  | KINDERGARTEN CLASSROOM |
|  | CLASSROOM ACCESSORY |
|  | ADMIN / AUX |
|  | CIRCULATION |
|  | STUDENT RESTROOM |
|  | STAFF RESTROOM |

FIRST FLOOR PLAN
Paden Elementary School Modernization
Alameda Unified School District
JULY 2016

Interior Improvements – Second Floor



GENERAL NOTES:

1. INSTALL NEW MANUALLY CONTROLLED SHADES AT ALL CLASSROOMS AND ADMINISTRATION WINDOWS.
2. INSTALL NEW ELECTRONICALLY CONTROLLED SHADES AT ALL CLASSROOM CLERESTORY WINDOWS.

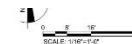
LEGEND:

| | |
|--|------------------------|
|  | CLASSROOM |
|  | KINDERGARTEN CLASSROOM |
|  | CLASSROOM ACCESSORY |
|  | ADMIN / AUX |
|  | CIRCULATION |
|  | STUDENT RESTROOM |
|  | STAFF RESTROOM |

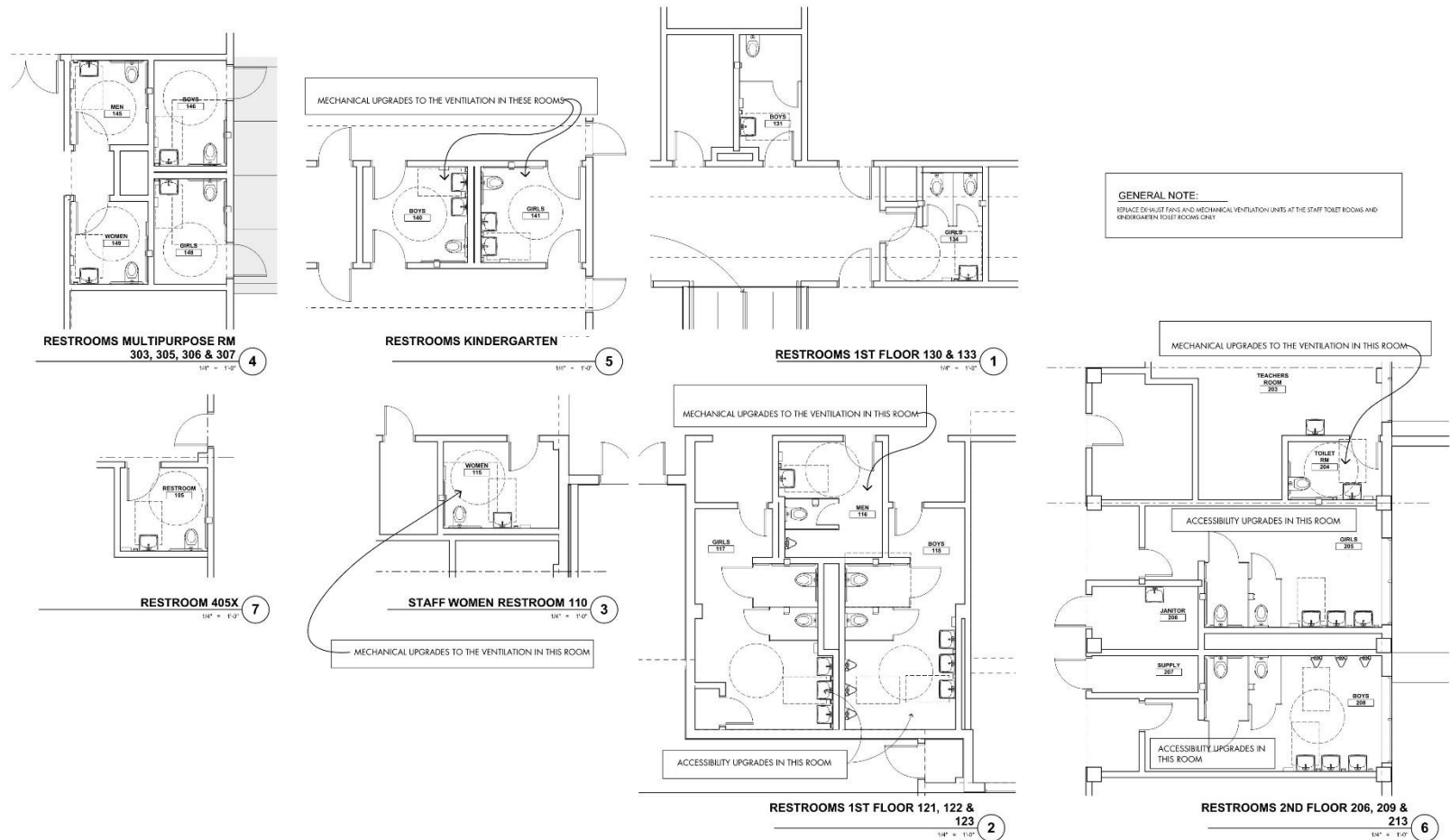
SECOND FLOOR PLAN

Paden Elementary School Modernization

Alameda Unified School District
JULY 2016



Interior Improvements – Toilet Rooms



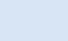
ENLARGED TOILET ROOM PLANS

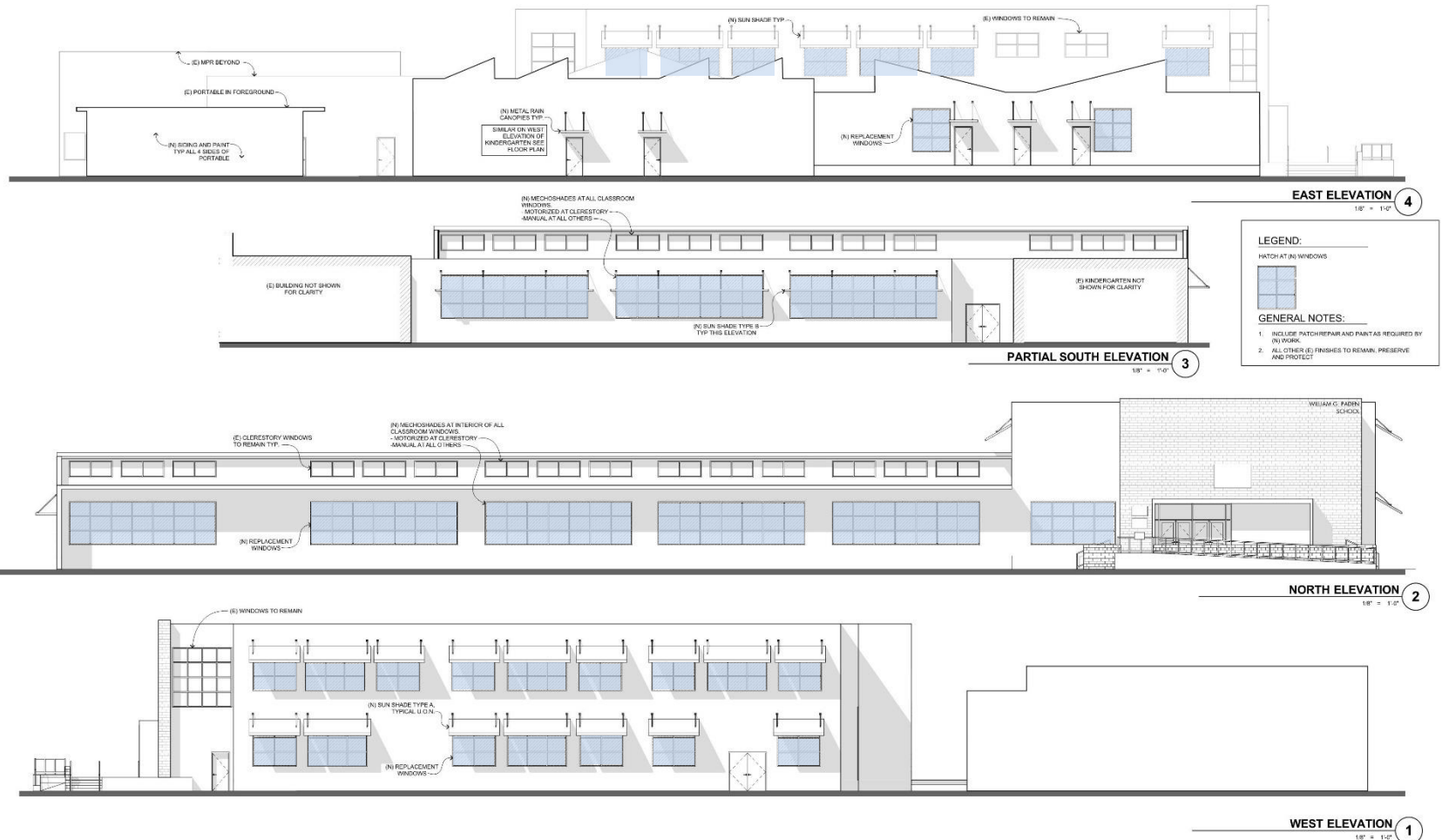
Paden Elementary School Modernization

Alameda Unified School District
JULY 2016



Exterior Window and shade control Improvements

 = New Windows with upper operable panes



EXTERIOR ELEVATIONS

Next Steps

- Site Committee To approve todays Schematic Design Scope or work
- Get School Board approval of schematic design
- Proceed with construction documents



QUATTROCCHI KWOK
ARCHITECTS





Thank You



QUATTROCCHI KWOK
ARCHITECTS

