

# Otis Elementary School

---

## School Site Perimeter Fencing and Gates

**DRAFT**  
May 12 2017

**PLEASE SIGN IN**  
**Thank You!**



# Otis Elementary School

## School Site Perimeter Fencing and Gates

### Agenda

1. Introductions, Roles and Responsibilities, and Background
2. Goals and expected outcomes for today's meeting
3. Perimeter fencing discussion:
  - General perimeter improvements. Review suggested options
4. Next Steps and process moving forward



QUATTROCCHI KWOK  
ARCHITECTS



# Safety and Security Committee

---

## DISTRICT

Robbie Lyng, Maintenance, Operations and Facilities

Shariq Khan, Interim CBO, AUSD

Rob van Herk, Director Technology Services

Kelly Lara, Student Services *(No longer with District)*

Susan Davis, Director of Communications

Brenda Parella, Project Manager, Maintenance,  
Operations & Facilities

## SCHOOL STAFF AND COMMUNITY

Kristen Zazo, Encinal High School Principal

Robert Ithurnburn, Alameda High School Principal

Michael Hans, Lincoln Middle School Principal

Cheryl Wilson, Ruby Bridges Elementary School  
Principal

Cammie Harris, Wood Middle School Principal

Babs Freitas, Bay Farm Elementary School Principal

Aurora Sweet, Edison Middle School Principal

Hank Morten, Alameda Police Department

**Community Involvement for Fencing:**  
*“It is advised to engage the community  
(adjacent homeowners, etc.) in the  
design process for the perimeter fencing.”*



# Safety and Security Committee's recommendations

## Overview (Typical at all schools)

- **FENCING AND GATES**
- ADMINISTRATION AND MAIN ENTRANCE
- WINDOWS AND GLAZING
- POLICIES AND PROCEDURES
- DOOR LOCKS AND ACCESS CONTROL
- SECURITY MANAGEMENT AND COMMUNICATIONS SYSTEMS
- VIDEO SURVEILLANCE
- SITE LIGHTING
- PARKING AND DROP OFF/SITE ACCESS SAFETY
- DISASTER PREPAREDNESS



# Safety and Security Committee's recommendations for Fencing and Gates - Overview

(Typical at all schools)



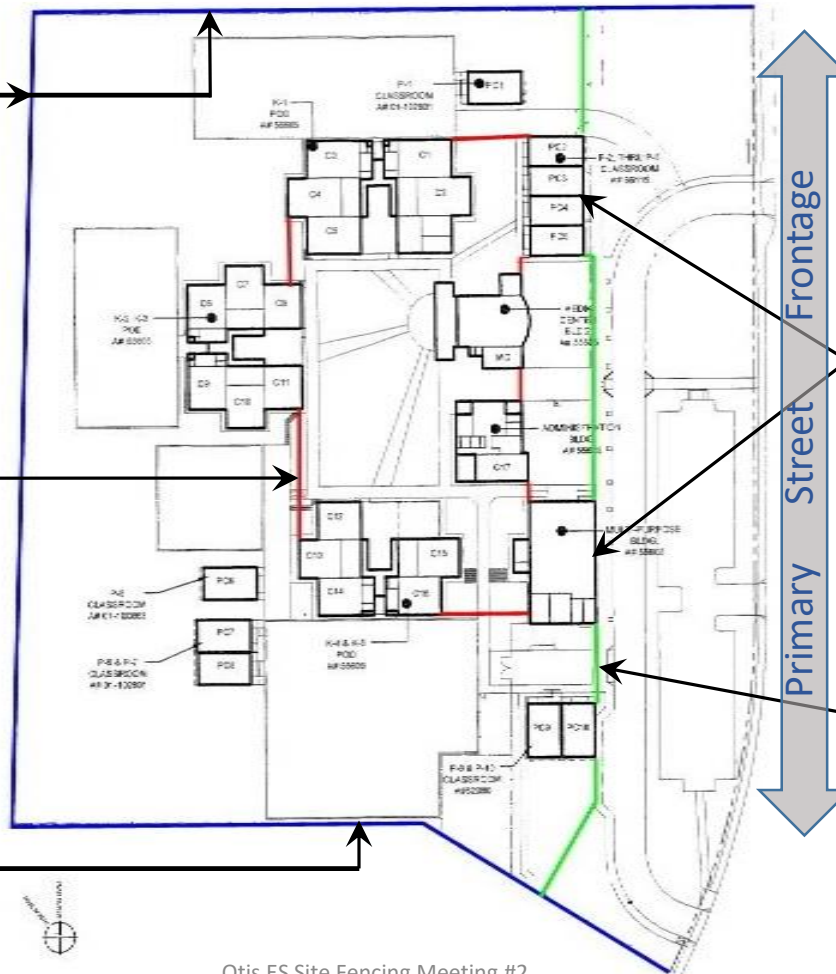
6' Perimeter Fencing



+/-6' Inner Core Fencing



Taller Ball Control Fencing



Buildings as Secure Perimeter if possible



6' Ornamental Primary Street-frontage Fencing

# Safety and Security Committee's recommendations for Fencing and Gates - Overview

(Typical at all schools)



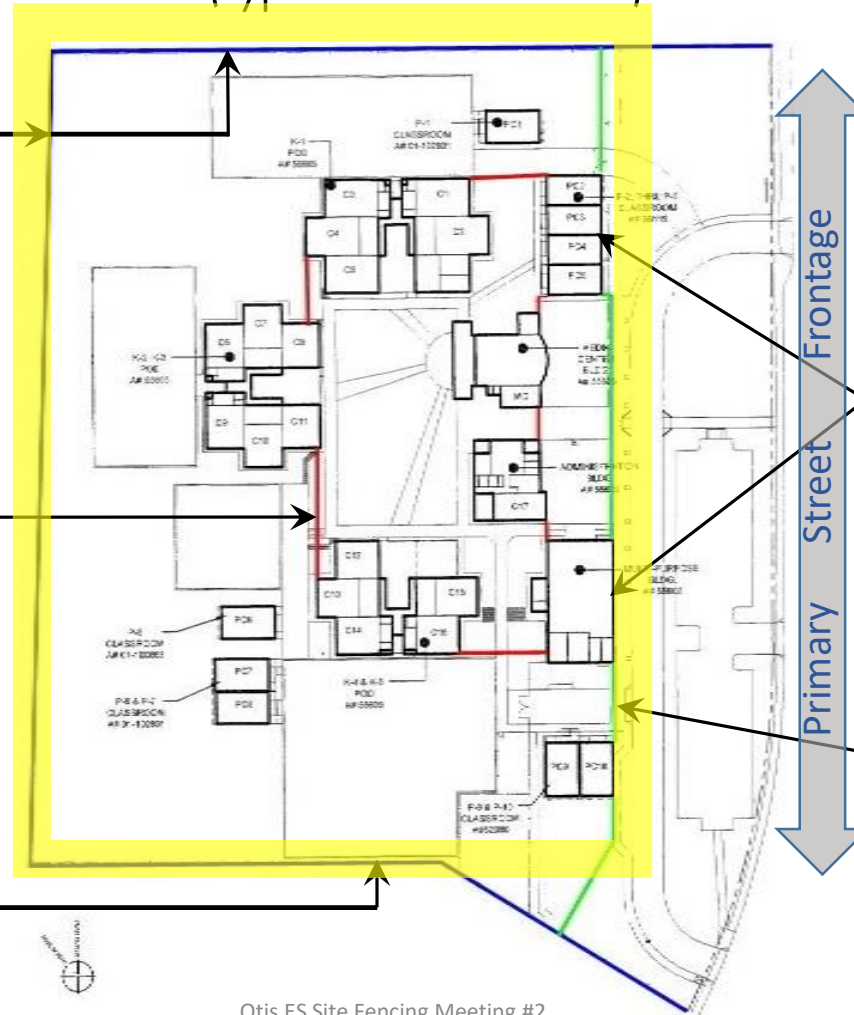
6' Perimeter Fencing



+/-6' Inner Core Fencing



Taller Ball Control Fencing



Primary Street Frontage

Buildings as Secure Perimeter if possible



6' Ornamental Primary Street-frontage Fencing

# Safety and Security Committee Recommendations

---

## For Secure Perimeters, Fencing and Gates

### EXAMPLES





# Examples of general Perimeter Chain Link Fencing



Vinyl Coated or  
painted Black



Galvanized

Target height for  
general perimeter  
fencing is 6'-0" Tall.

# Examples of ball control fencing

---



Ball Control fencing  
can vary in height as  
necessary on a site by  
site basis

# Examples of Ornamental fencing



Target height for  
Ornamental fencing is  
6'-0" Tall.

Goal of Committee is  
to establish a single  
District-wide standard.



# Examples of Inner core/second level Fencing

---



Design can vary on a  
site by site basis

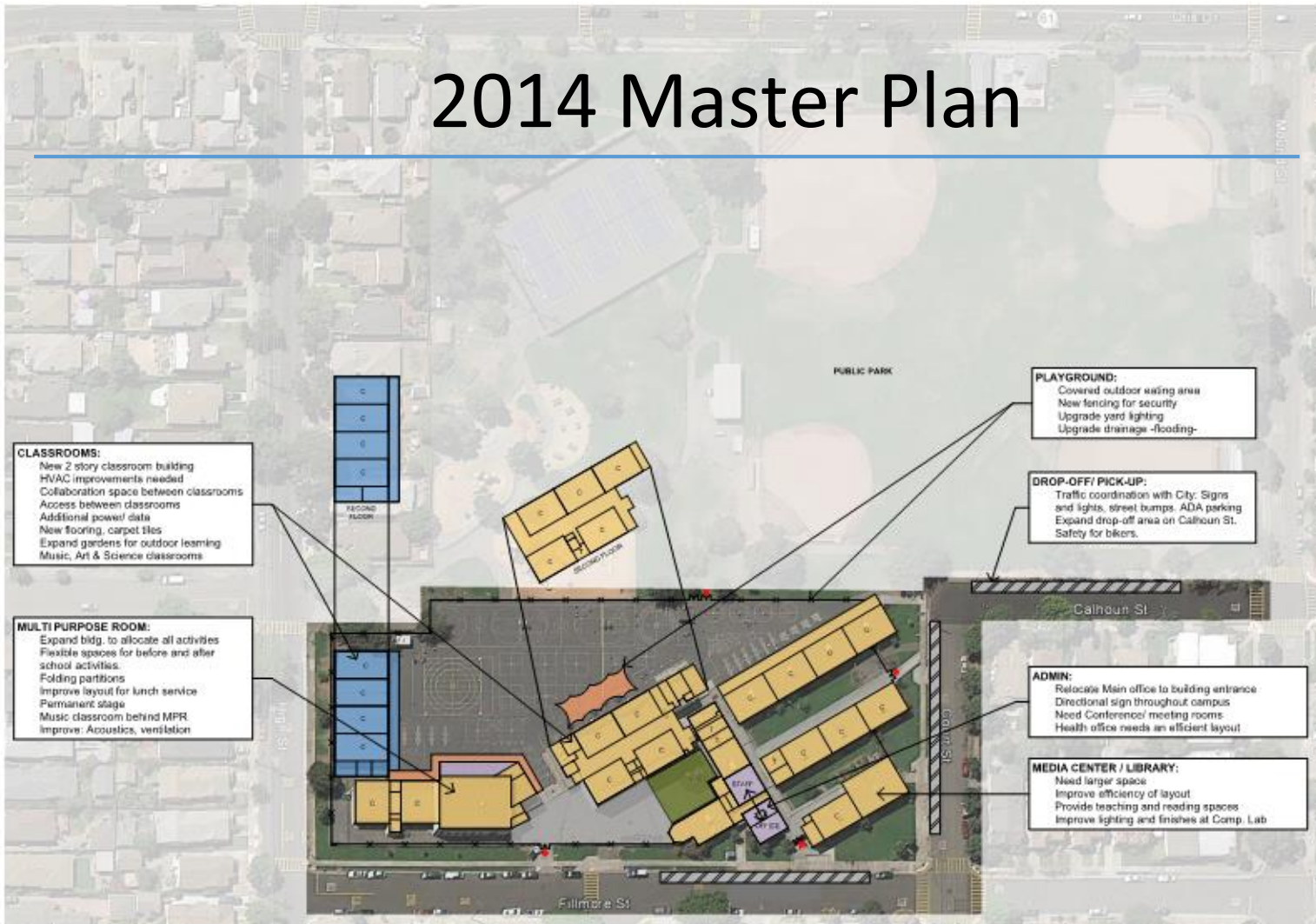
# Preliminary Process for Site Fencing

---

1. Review Master Plan
2. Conduct preliminary site assessment, document existing fencing
3. Meet with Stakeholders, review options and suggestions
4. Develop Schematic site fencing plans for Board approval.



# 2014 Master Plan



- KEY**
- NEW STRUCTURE
  - REPURPOSED/ RECONFIGURED
  - MODERNIZED
  - NEW / RECONFIGURED SITE WORK
  - NEW SHADE STRUCTURE
  - NEW LANDSCAPED AREA
  - POSSIBLE FUTURE GROWTH
  - NEW FENCE
  - DEMOLITION
  - MAIN ENTRY POINT
  - OUTER PERIMETER ENTRY POINT
  - INNER PERIMETER ENTRY POINT
  - C CLASSROOM
  - T TOILET

FRANK OTIS ELEMENTARY SCHOOL SITE PLAN



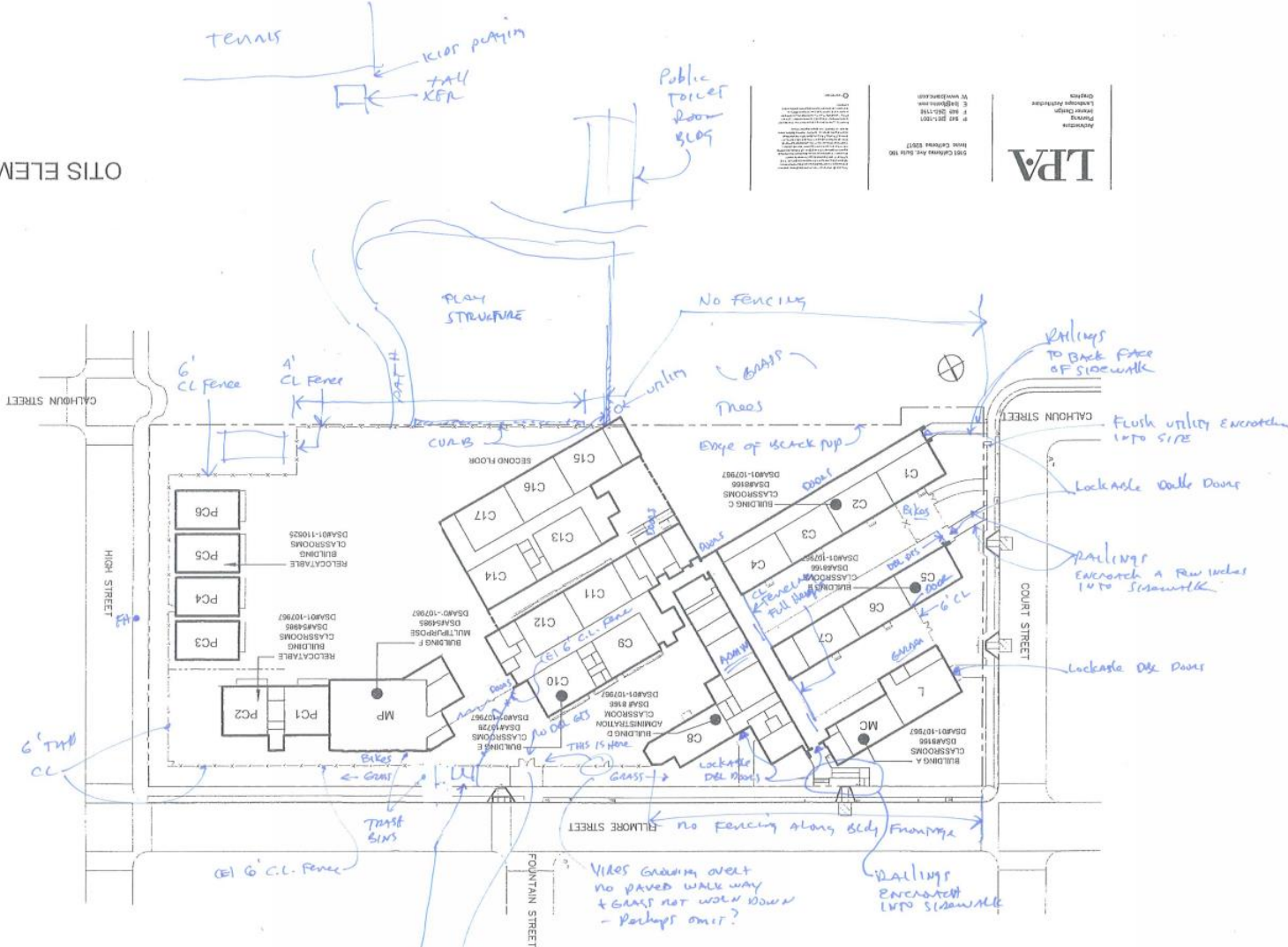
# Preliminary Site Assessment Notes – March 2016 (Drawing provide by MOF)



OTIS ELEMENTARY SCHOOL  
 ALAMEDA UNIFIED SCHOOL DISTRICT  
 2310 MILLMORE STREET, ALAMEDA, CALIFORNIA 94602

**LPA**

ARCHITECT  
 LARRY M. HARRIS  
 2000 CALIFORNIA AVE. SUITE 100  
 OAKLAND, CALIFORNIA 94612  
 PHONE: (415) 764-1100  
 FAX: (415) 764-1118  
 E: lpharris@lpa.com  
 WWW: www.lpa.com



ORIGINAL FACILITY BUILT: 1950  
 BUILDING AREA: 35,545 SF  
 RELOCATABLE BUILDING AREA: 6,148 SF  
 NOTE:  
 1. PORTIONS OF CANOPIES AND COVERED  
 AREAS ARE NOT INCLUDED IN TOTAL SQUARE  
 FOOTAGE.  
 2. CLASSROOM SQUARE FOOTAGE ABOVE IS  
 GROSS FOOTAGE.

PROPERTY LINE

Room	Area (SF)
C17	1041 SF
C16	1042 SF
C15	1043 SF
C14	1043 SF
C13	1021 SF
C12	1022 SF
C11	1035 SF
C10	1036 SF
C9	1036 SF
C8	1037 SF
C7	1201 SF
C6	940 SF
C5	940 SF
C4	928 SF
C3	928 SF
C2	928 SF
C1	928 SF
MP	928 SF
MC	2055 SF
L	926 SF
<b>SQUARE FOOTAGE</b>	<b>926 SF</b>

LEGEND

C	CLASSROOM
PC	PORTABLE CLASSROOM
MP	MULTI PURPOSE ROOM
MC	MEDIA CENTER
L	LIBRARY

# Notes from Site Meeting #1 April 26, 2017



QUATTROCCHI KWOK  
ARCHITECTS

April 26, 2017

## Alameda USD – Districtwide Fencing Projects

### Otis Elementary – Site Committee Design Meeting Notes

1580.00/8

#### Attendees:

See attached sign-in sheet

#### Notes:

##### Discussion Item #1: Introductions, Roles and Responsibilities:

- a) Robbie Lyng from AUSD MOF introduced the project, history and background.
- b) Questions were asked about how “set in stone” is the decision to add perimeter fencing at Otis. Robbie explained that this is the direction we have received from the school board. The purpose of today’s meeting is to discuss some of the options in this regard (with respect to type of fencing and location of access points) and to ensure a transparent process with site and community representatives.
- c) Some people said they did not vote on a fence in the bond. One parent stated her research revealed that fences do not make schools safer.
- d) Nick explained goal for the meeting was to get committee feedback on how to improve the perimeter security of the school.
- e) Discussed goal of a single point of entry into campus between morning drop off and afternoon pick up.
- f) Discussed goal to maintain community access afterhours.
- g) Nick introduced the Design Standards established by the AUSD Committee for Safety and Security Design Standards, and explained the standards for fencing design, height, and locations.
- h) Nick explained that the district standards acknowledge that building edges, when placed at the perimeter of the campus, can serve as a secure measure, and thus fencing would not be required between buildings and fences in most instances.

##### Discussion Item #2: Perimeter fencing suggestions:

- a) Nick showed a site plan of Otis, indicating existing buildings, existing fencing and existing campus entry points.
- b) Nick then highlighted the areas of the campus perimeter that lacks a secure barrier.
- c) Fence line between the campus playground and the adjacent park:
  - i. Option 1 showed new chain link fencing between the black top and the park, with three large access points to the park.
  - ii. The PE teacher in attendance said she did not want the fence. She expressed strong concern over any fencing along this property line, stating that any fencing at all would make it impossible for her to employ her curriculum. She also expressed that the black top is too small and the portable buildings are in the way.

- iii. Nick offered a suggestion of adding as many gates as possible to mitigate these concerns. After discussion, the committee rejected this suggestion.
  - iv. Many comments expressed a significant concern about adding any additional fencing along this property line, and a desire to gain approval from the school board to deviate from the secure perimeter standard in this location.
  - v. Nick asked if there exist any security concerns with the openness along this property line at the park. The collective response from this group was “no”. there was no one in attendance who stated that they were in favor of the security fencing between the park and the school.
  - vi. This item did not get resolved during tonight’s meeting. A question was asked about the possibility to phase the fencing work at Otis, and Robbie said yes this is a possibility, but only if we get an approved secure perimeter fencing plan the meets the Districts Safety and Security Committee’s recommendations.
  - vii. It was agreed that fencing should exist between the portable buildings and this property line and that a fence should be installed blocking off student access to behind the portable buildings. This fence shall be chain link. Robbie indicated that a gate would need to be in this fence so that the facilities department personnel could still access the portable building HVAC units for maintenance.
- d) The High-Street Property line:
    - i. Robbie indicated that an emergency vehicle access gate is required here between the new building and the portable buildings.
    - ii. It was agreed that a fence should be installed along this property line.
    - iii. Option 1 indicated that this fence be chain link. Option 2 indicates it to be ornamental. After discussion, it was agreed that this fence should be ornamental, as opposed to chain link.
    - iv. Committee members expressed concern about “blind spots” between the portables and the street. It was agreed that a fence should be installed between the portable and the High-Street Fence to eliminate student access to this area. Robbie indicated that a gate would need to be in this fence so that the facilities department personnel could still access the portable building HVAC units for maintenance.
    - v. It was requested that this fence stop a few yards short of the corner at High Street and Fillmore Street so that room for a future monument sign could be maintained beyond the fence line.
  - e) The Fillmore Street Property Line:
    - i. Option 1 extends the existing chain link fencing along Fillmore to the corner of Fillmore and High Streets. The group requested changes to this layout and to the material of the fence. See option 2 below.
    - ii. Option 2 proposes to change the fence to ornamental since this is the primary street frontage. Option 2 also stops the fencing a few yards short of the corner at High Street and Fillmore Street so that room for a future monument sign could be maintained beyond the fence line.
    - iii. Option 2 adds a “pedestrian access” gate adjacent to the emergency vehicle access gates between the MPR and the Kinder play area.
    - iv. Option 1 maintains the existing fence setback from the property line. Option 2 considers moving the fencing out beyond the grass median and places the new fence along the back of the side walk at the property line. This places the grass “median” area on the inside of the fence.
    - v. It was agreed that no fencing is required between the primary school buildings and the property line, however all agreed that new fencing would be good between the MPR and the new building and the property line, creating one continuous run of fencing from the corner of the kindergarten classroom wing and the High-Street corner.
  - f) The Court Street Property Line:
    - i. It was requested that the old chain link bike enclose be replaced with new black chain link.
    - ii. It was requested that the old chain link fencing between the media center and the adjacent classroom wing be replaced with new black chain link.
    - iii. It was requested that these fences be designed to inhibit climbing onto the roofs of the buildings. One committee member suggested that this may be achieved by making the fence taller.
    - iv. It was agreed that no fencing is required between the primary school buildings and the property line.
    - v. It was requested that we be sure to preserve an existing memorial along this property line.
    - vi. Nick showed a fencing option that placed a new fence at the back edge of the sidewalk along the property line. The group did not like this approach, and rejected it in lieu of the initial option that did not show any new fencing along this property line, relying instead on the building edges to create the secure perimeter.

##### Discussion Item #3: Cameras:

- i. there was a short discussion at the end of the meeting initiated by Robbie about cameras. After some discussion about the pros and cons of this, there were no locations settled upon and no direction from the committee was clearly given.

##### 1) Discussion Item #4: Next Steps:

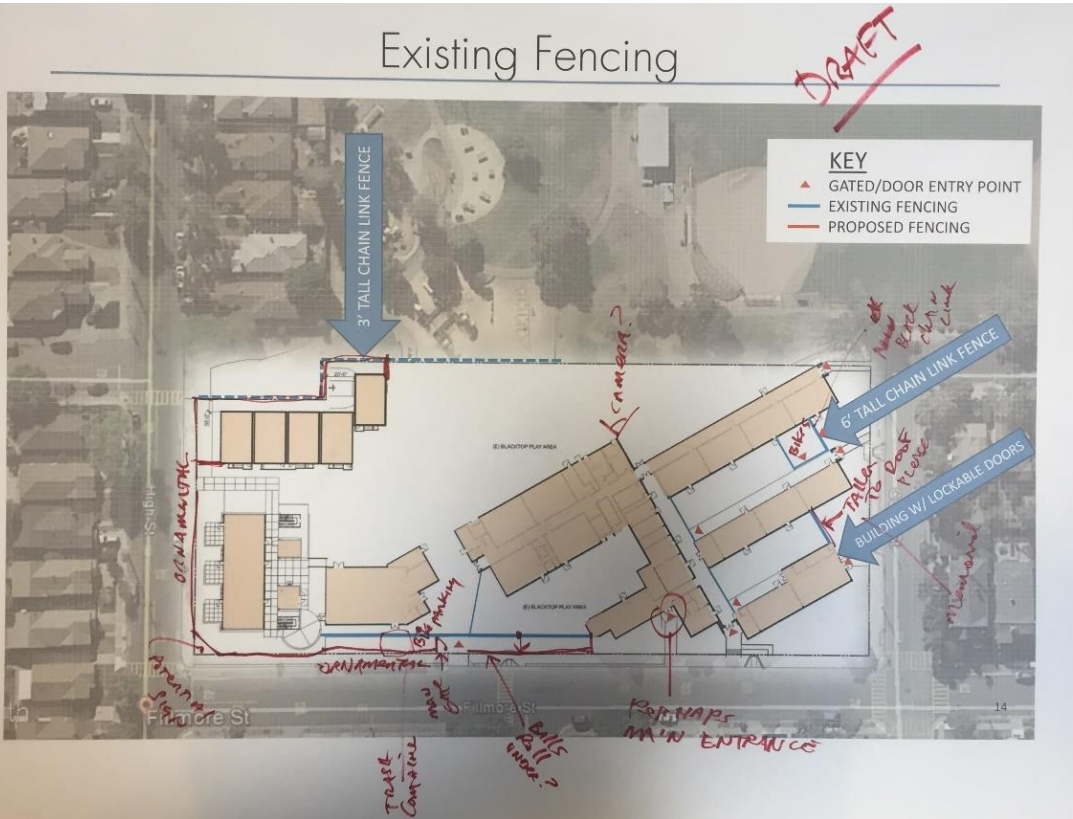
- i. Robbie suggested that another meeting should be scheduled.
- ii. The group requested more notice before the next meeting. At least a week notice was requested. The principal asked the committee to start to consider how to notify the community for the next meeting.
- iii. A schematic fencing design will be developed and presented to the AUSD MOF office. The AUSD MOF office personnel will distribute the notes and draft plan to the committee members who signed in and listed their email addresses. MOF will also upload the notes to the district website along with the draft site plan.

5/16/2017

Otis ES Site Fencing Meeting #1

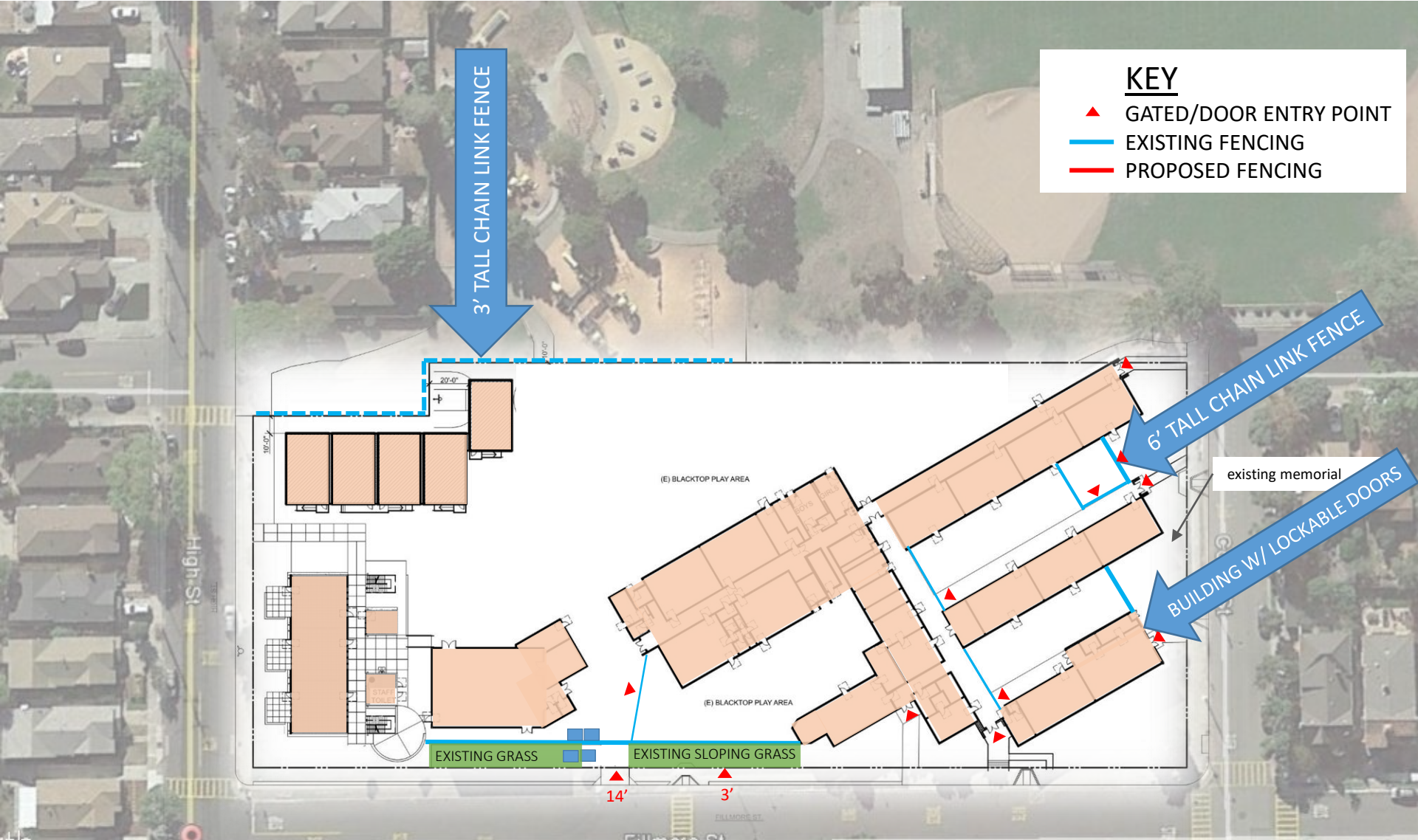
End of notes





Name	Title (Parent/Community/Staff)	Email Address
April 26, 2017	6:00PM	Otis Elementary School
Site Fencing		
Site Committee Meeting Sign-In Sheet		
Kimberly Buckingham	Parent	kimberlybuckingham@sbcglobal.net
Jeff Chorney	Parent	jeffchorney@yahoo.com
Bernadette Gard	staff / parent	bernadegard@calameda.k12.ca.us
Naomi WORTIS	Parent	naomi.wortis@ucsf.edu
Monty PATTERSON	MOF - PROJECT MANAGER	mpatterson@calameda.k12.ca.us
Doreen Hill	PARENT	TDHILLKSCA@COMCAST.NET
Tanya Harris	Principal - Otis	Tharris@alameda.k12.ca.us
Kerri Tran	Student	kerriTRAN@gmail.com
Jill Williams	Parent	sjille@gmail.com
Olivia Higgins	Parent	ohiggins50@yahoo.com
Diborah Oppersol	Teacher	dappersol@alameda.k12.ca.us
Phillip Williams	Parent	phartphil@gmail.com

# Existing Fencing



**KEY**

- ▲ GATED/DOOR ENTRY POINT
- EXISTING FENCING
- PROPOSED FENCING

3' TALL CHAIN LINK FENCE

6' TALL CHAIN LINK FENCE

BUILDING W/ LOCKABLE DOORS

existing memorial

EXISTING GRASS

EXISTING SLOPING GRASS

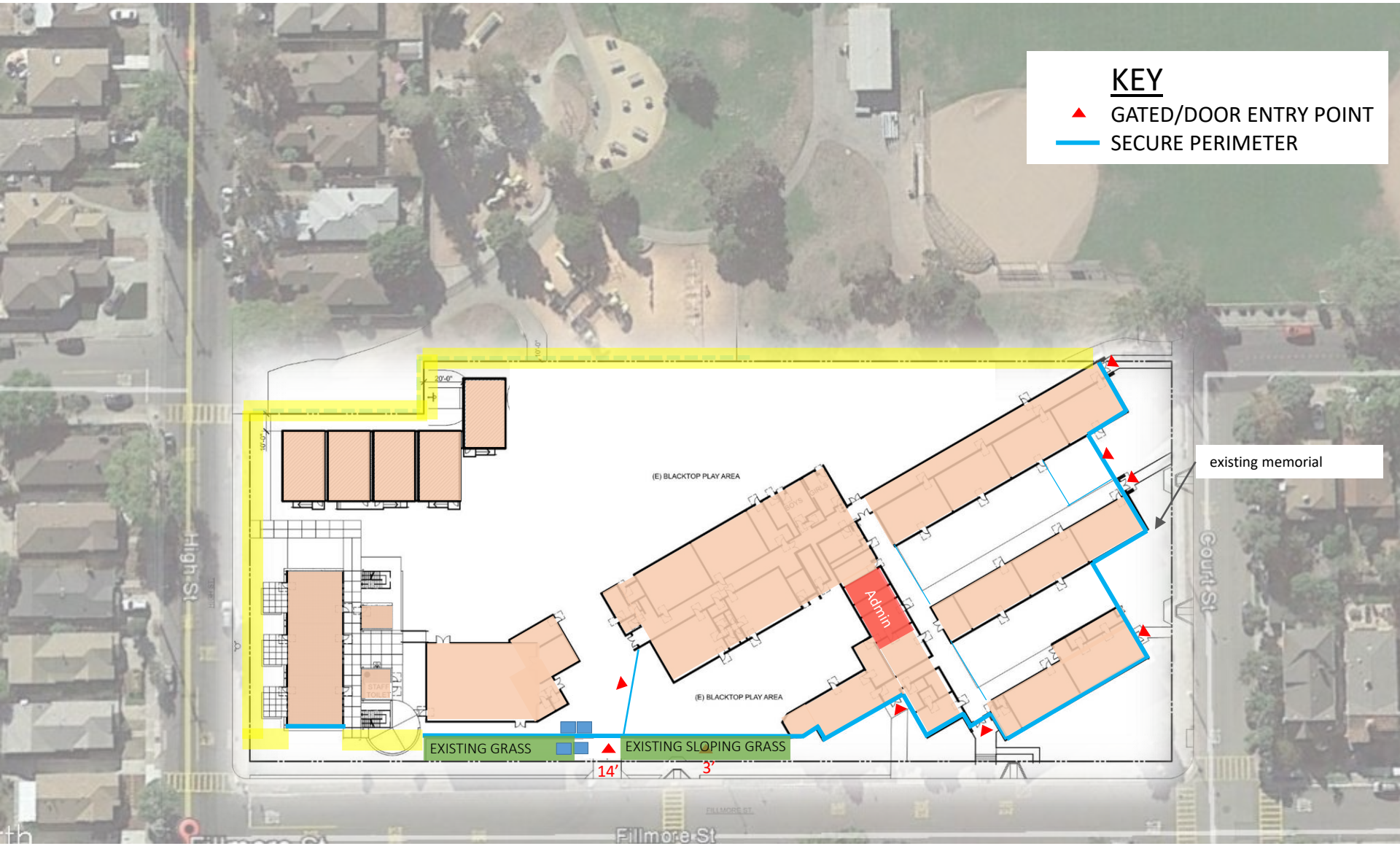
14'

3'

High St

Fillmore St

# Existing "Secure Perimeter"



## KEY

- ▲ GATED/DOOR ENTRY POINT
- SECURE PERIMETER

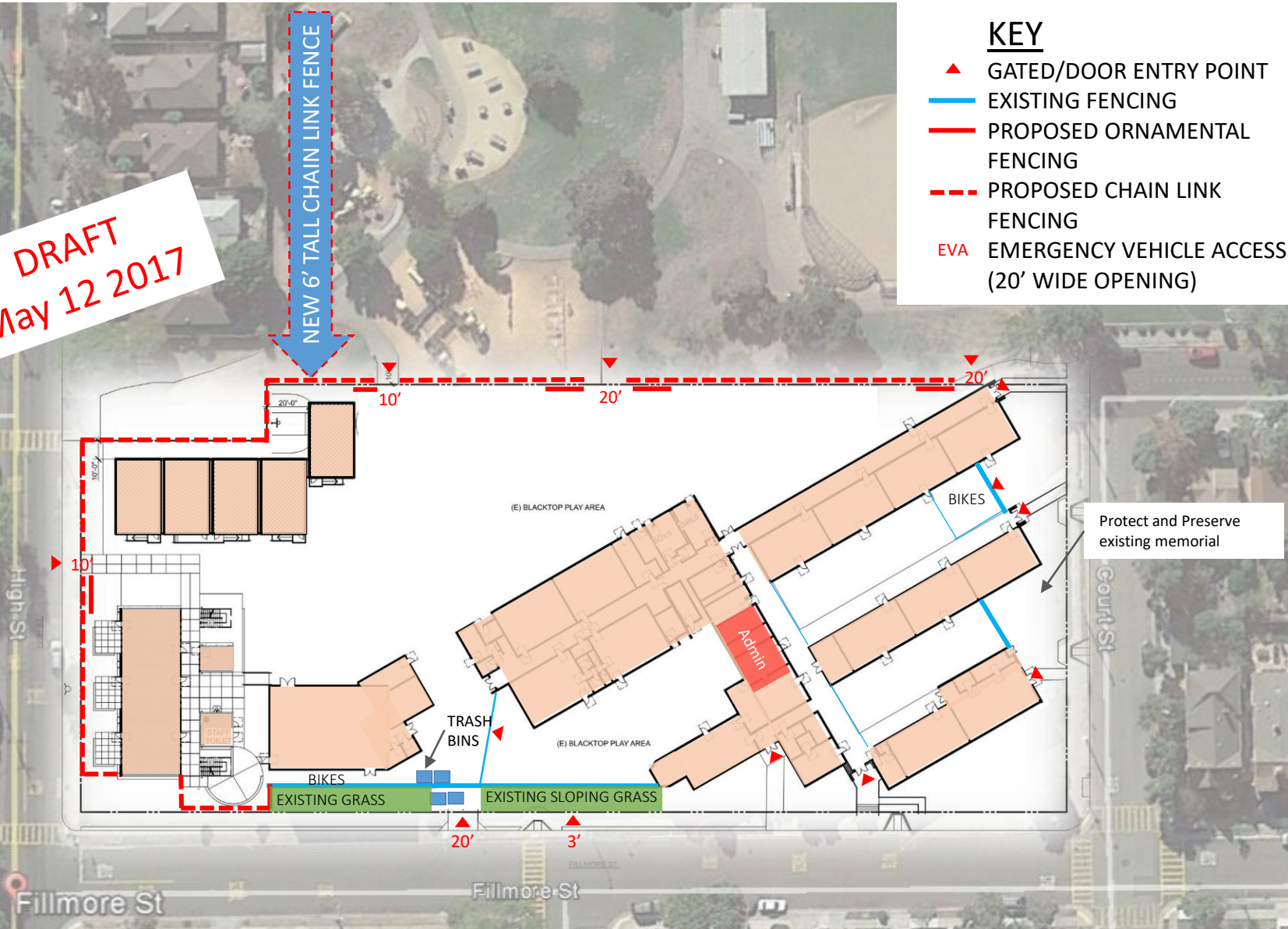
existing memorial

# Secure Perimeter – Potential Option #1

**DRAFT**  
May 12 2017

## KEY

- ▲ GATED/DOOR ENTRY POINT
- EXISTING FENCING
- PROPOSED ORNAMENTAL FENCING
- - - PROPOSED CHAIN LINK FENCING
- EVA EMERGENCY VEHICLE ACCESS (20' WIDE OPENING)

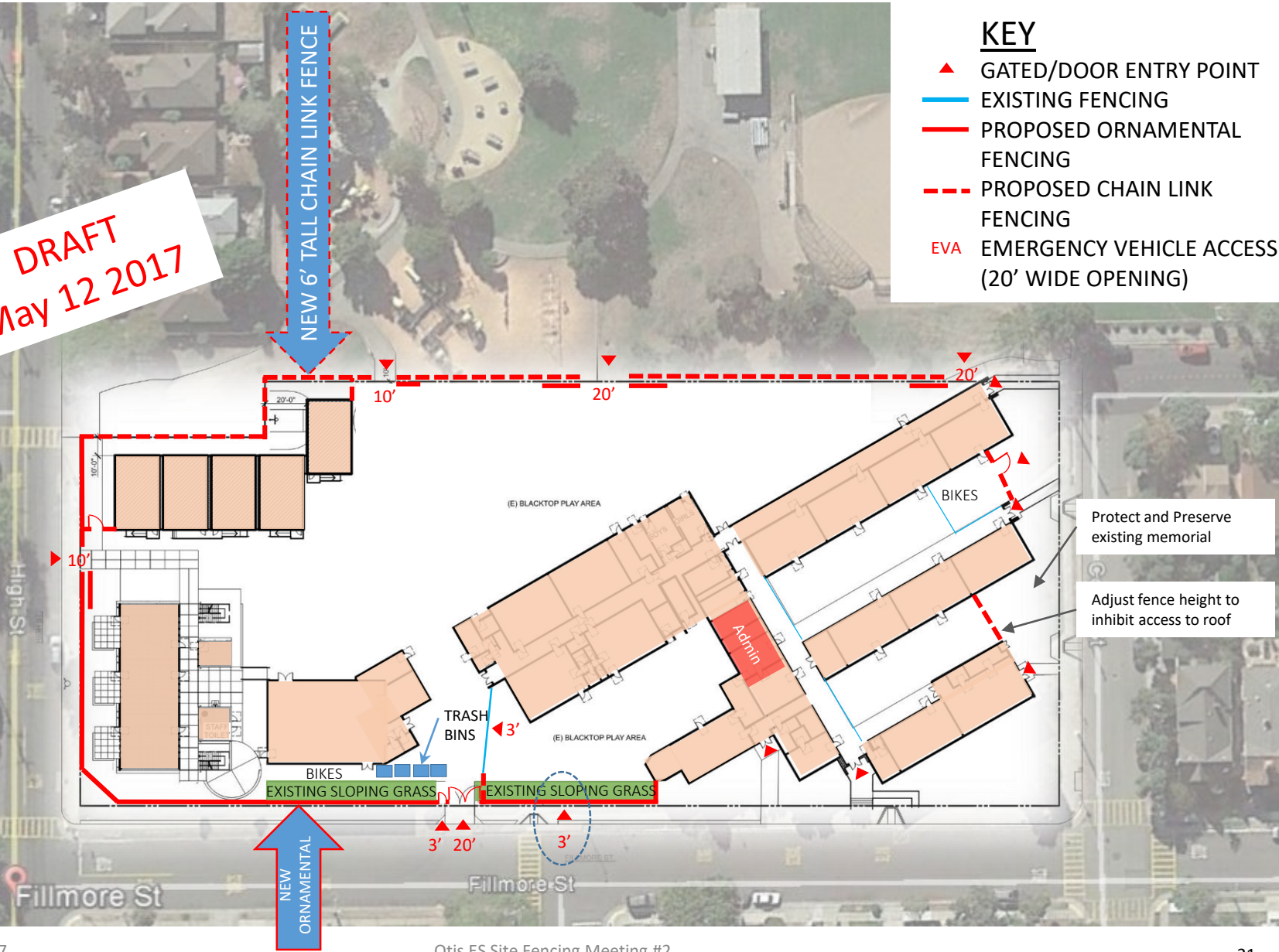


# Secure Perimeter – Potential Option #1A

**DRAFT**  
May 12 2017

## KEY

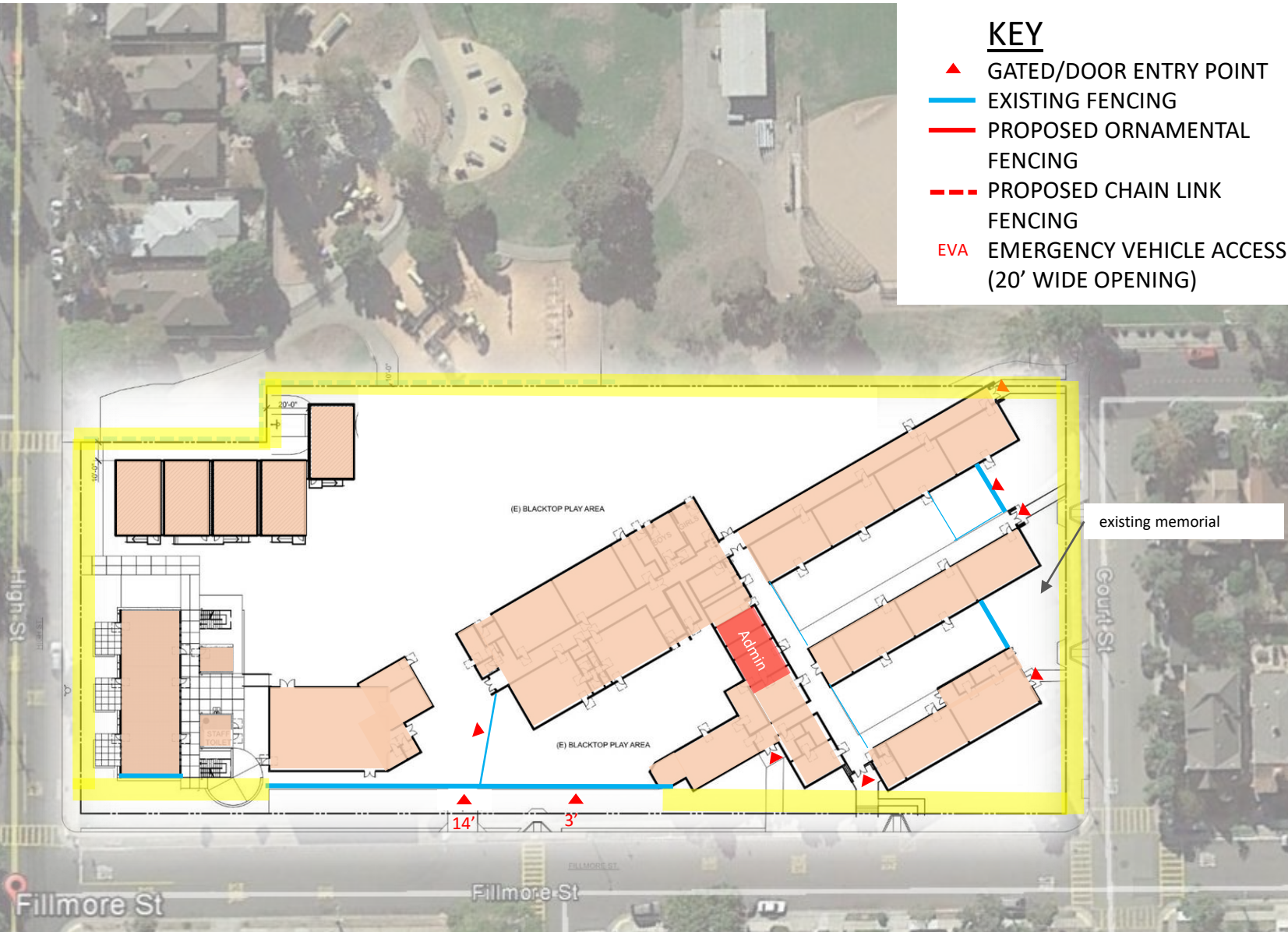
- ▲ GATED/DOOR ENTRY POINT
- EXISTING FENCING
- PROPOSED ORNAMENTAL FENCING
- - - PROPOSED CHAIN LINK FENCING
- EVA EMERGENCY VEHICLE ACCESS (20' WIDE OPENING)



# Secure Perimeter – Potential Option 2

## KEY

- ▲ GATED/DOOR ENTRY POINT
- EXISTING FENCING
- PROPOSED ORNAMENTAL FENCING
- - - PROPOSED CHAIN LINK FENCING
- EVA EMERGENCY VEHICLE ACCESS (20' WIDE OPENING)

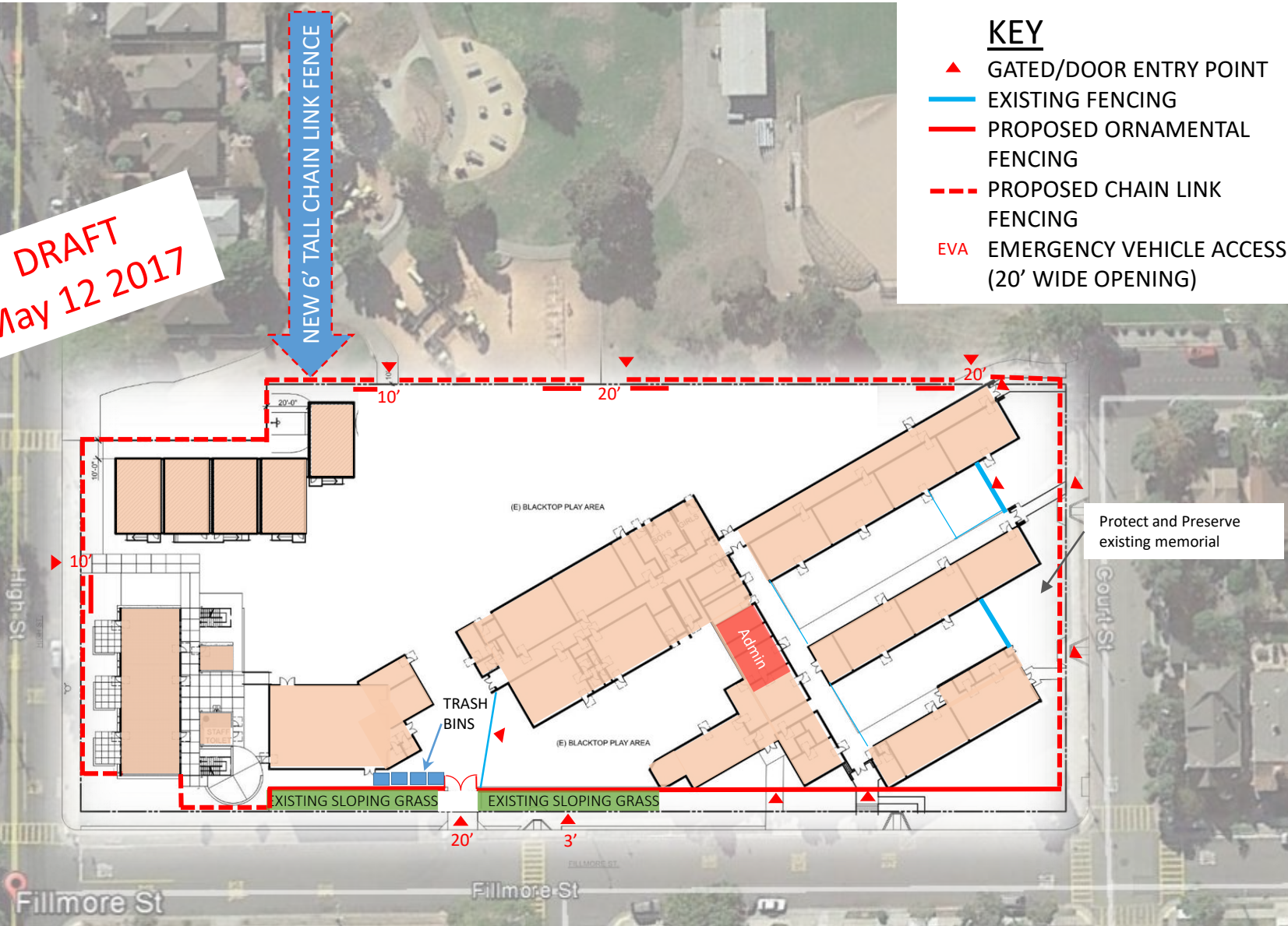


# Secure Perimeter – Potential Option 2

## KEY

- ▲ GATED/DOOR ENTRY POINT
- EXISTING FENCING
- PROPOSED ORNAMENTAL FENCING
- - - PROPOSED CHAIN LINK FENCING
- EVA EMERGENCY VEHICLE ACCESS (20' WIDE OPENING)

**DRAFT**  
May 12 2017



# NEXT STEPS

---

- Schematic Site Plan showing proposed fencing will be developed and sent to AUSD MOF personnel
- MOF will seek out appropriate approvals from Site Principal, Local Fire Department, and DSA access compliance division
- Notes and plan will be uploaded to District Website by MOF personnel for public access

