



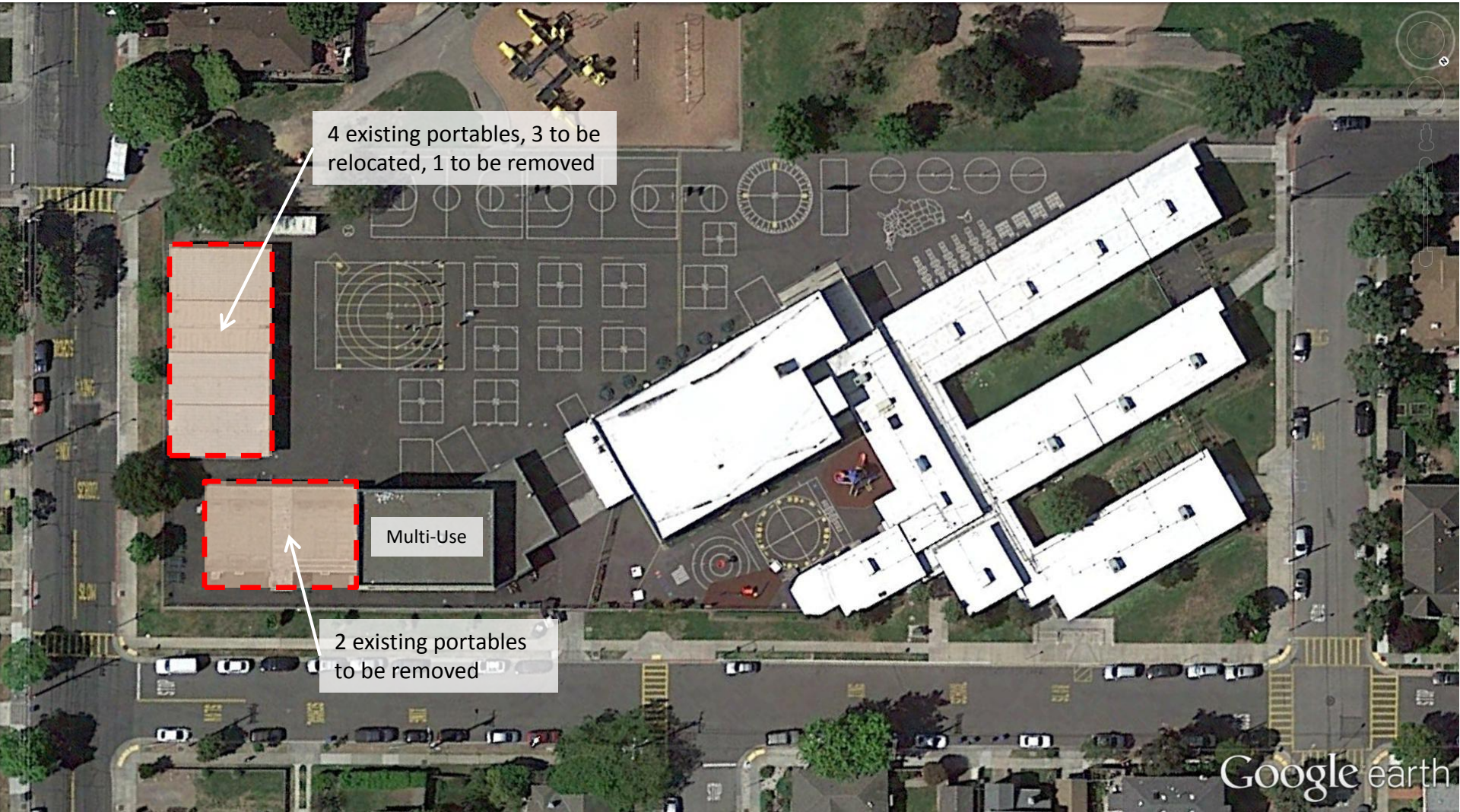
QUATTROCCHI KWOK
ARCHITECTS

Otis Elementary School

New Classroom Building

Schematic Design Presentation

September 29, 2015



4 existing portables, 3 to be relocated, 1 to be removed

Multi-Use

2 existing portables to be removed

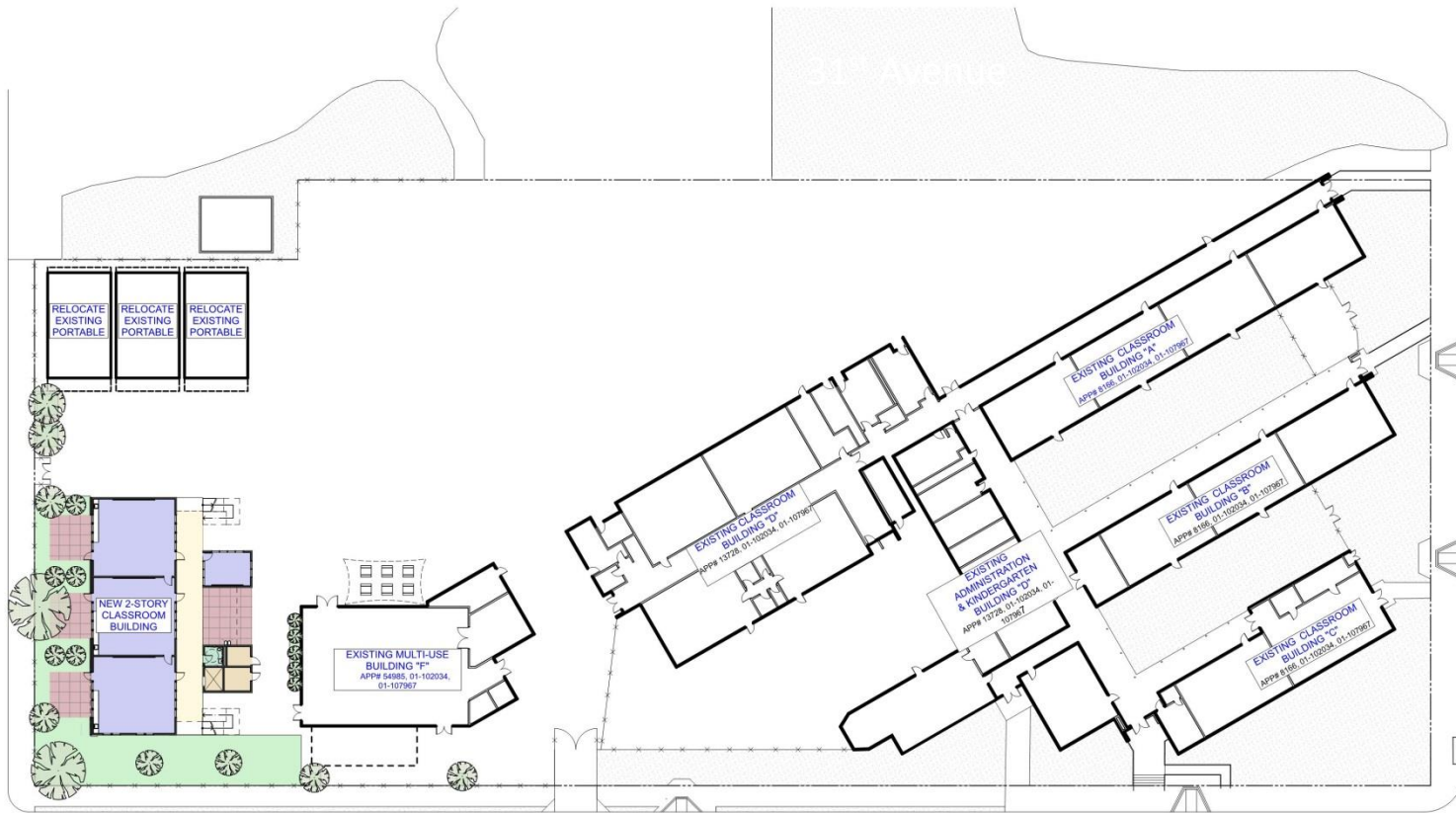
Google earth



Quattrocchi Kwok Architects

Otis Elementary School

New Classroom Building



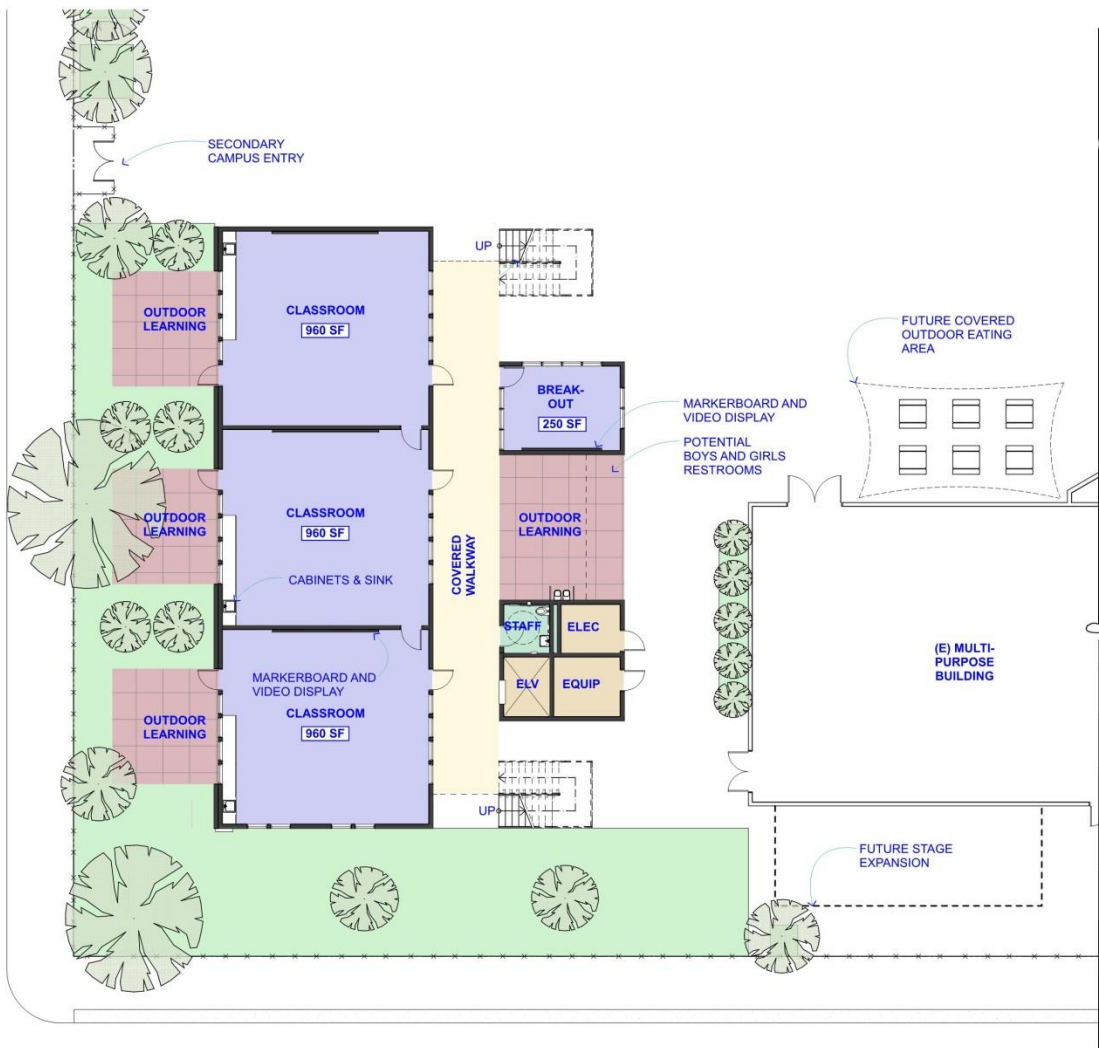
SITE PLAN

OTIS ELEMENTARY NEW CLASSROOM BUILDING

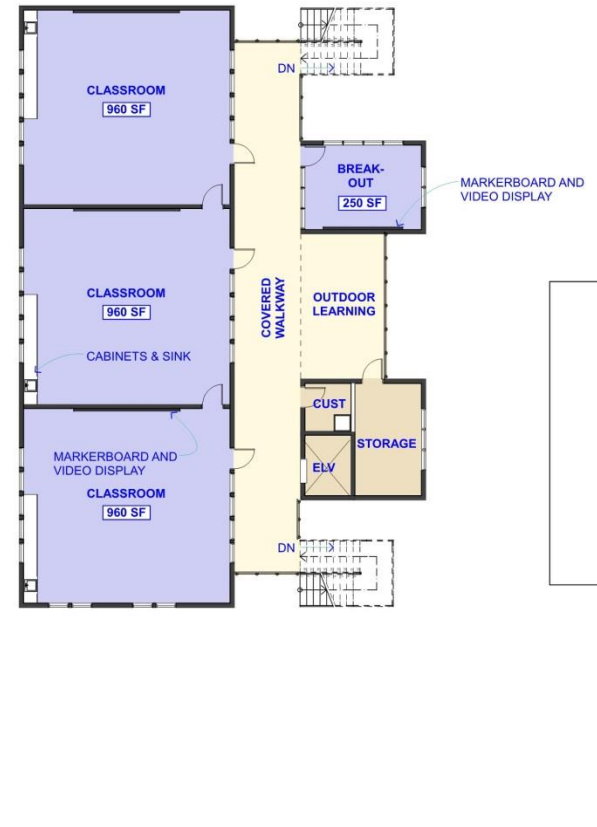
ALAMEDA UNIFIED SCHOOL DISTRICT

SEPTEMBER 22, 2015
SCALE: 1" = 20'





FIRST FLOOR



SECOND FLOOR

FLOOR PLANS

OTIS ELEMENTARY NEW CLASSROOM BUILDING

ALAMEDA UNIFIED SCHOOL DISTRICT



SEPTEMBER 22, 2015
SCALE: 1/8" = 1'-0"





Quattrocchi Kwok Architects

Otis Elementary School
New Classroom Building



Quattrocchi Kwok Architects

Otis Elementary School
New Classroom Building



Quattrocchi Kwok Architects

Otis Elementary School
New Classroom Building



Quattrocchi Kwok Architects

Otis Elementary School
New Classroom Building

Otis Elementary School

Project Cost Summary Update

Updated: September 23, 2015

Campus Budget (2014 Implementation Plan B) Phases 1 & 2	\$6,400,000
Escalation to 2015 dollars (5%)	\$320,000
Campus Budget (2015)	\$6,720,000

Soft Costs (30% of Total Project Budget) \$2,016,000

Current Construction Budget **\$4,704,000**

Phase 1 & 2 Construction Projects	Phase	Timeline	Construction Cost/Allowance
New classroom Building (6 classrooms) - Estimated	Phase 1	2016	\$3,893,973
Technology / Communication Upgrades - Allowance	Phase 1 or 2	2016 or 2017	\$490,304
Safety / Security Upgrades - Allowance	Phase 1 or 2	2016 or 2017	\$238,050
Phase 2: Kinder. minor remodel & minor mech - Allowance	Phase 2	2017	<u>\$650,000</u>

Current Estimated Construction Costs & Allowances **\$5,272,327**

Potential New Classroom Savings - Can Select at Time of Bid

Break Out Spaces (modular pricing)	(-\$267,000)
Outdoor Learning Areas & Landscaping	(-\$241,300)

Notes:

1. Construction project estimates include 15% design contingency
2. Construction project estimates do not include costs for construction contingency, FF&E, or hazardous materials abatement.



Thank You!



Quattrocchi Kwok Architects