



QUATTROCCHI KWOK  
ARCHITECTS

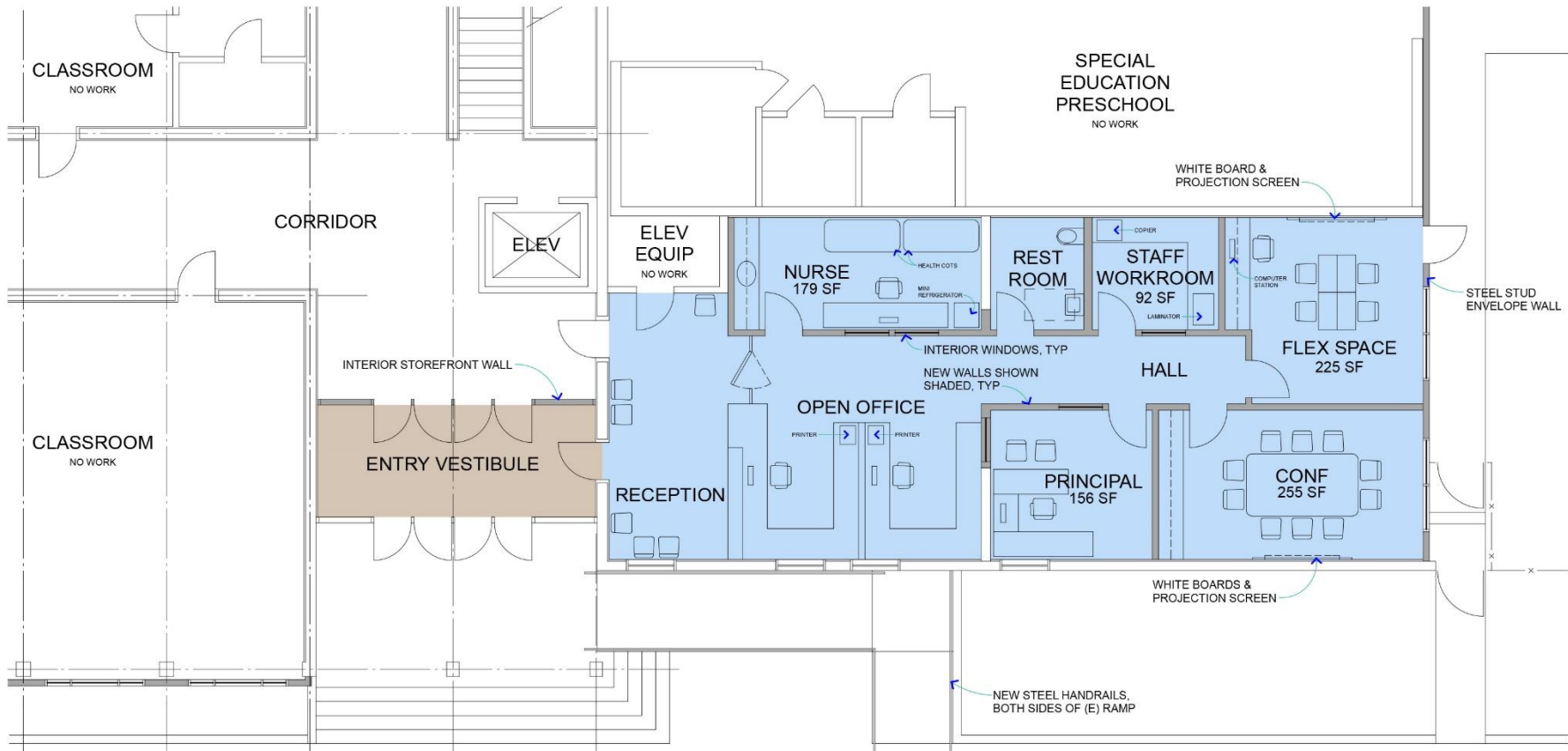
# Maya Lin School

## Modernization

Schematic Design Presentation to Board

September 29, 2015





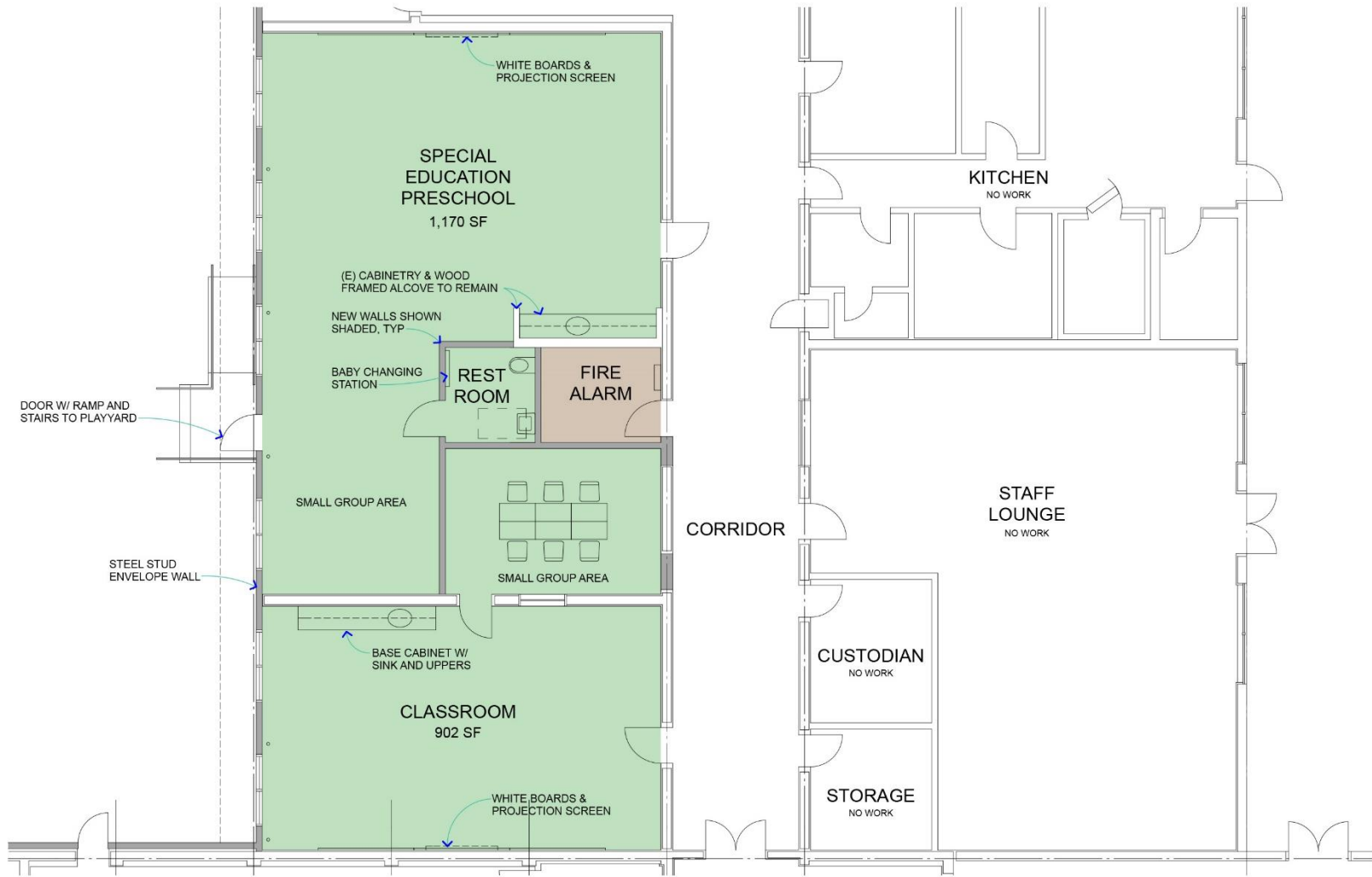
# ADMINISTRATIVE OFFICE & ENTRY VESTIBULE

MAYA LIN SCHOOL (ALAMEDA UNIFIED SCHOOL DISTRICT)

SCALE 1/8"=1'-0"

SEPTEMBER 22, 2015





**SPECIAL EDUCATION PRESCHOOL CLASSROOM AREA**

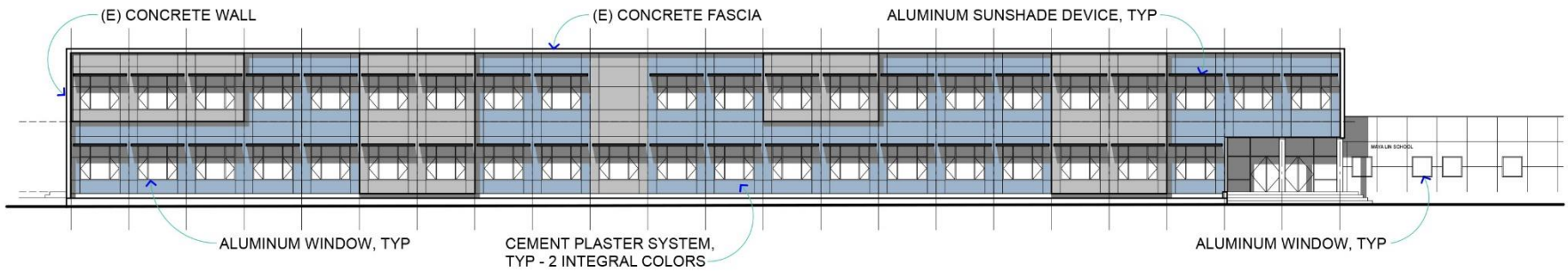
MAYA LIN SCHOOL (ALAMEDA UNIFIED SCHOOL DISTRICT)

SCALE 1/8"=1'-0"

SEPTEMBER 22, 2015



QUATTROCCHI KWOK  
ARCHITECTS



**EXTERIOR ELEVATION - SOUTH**

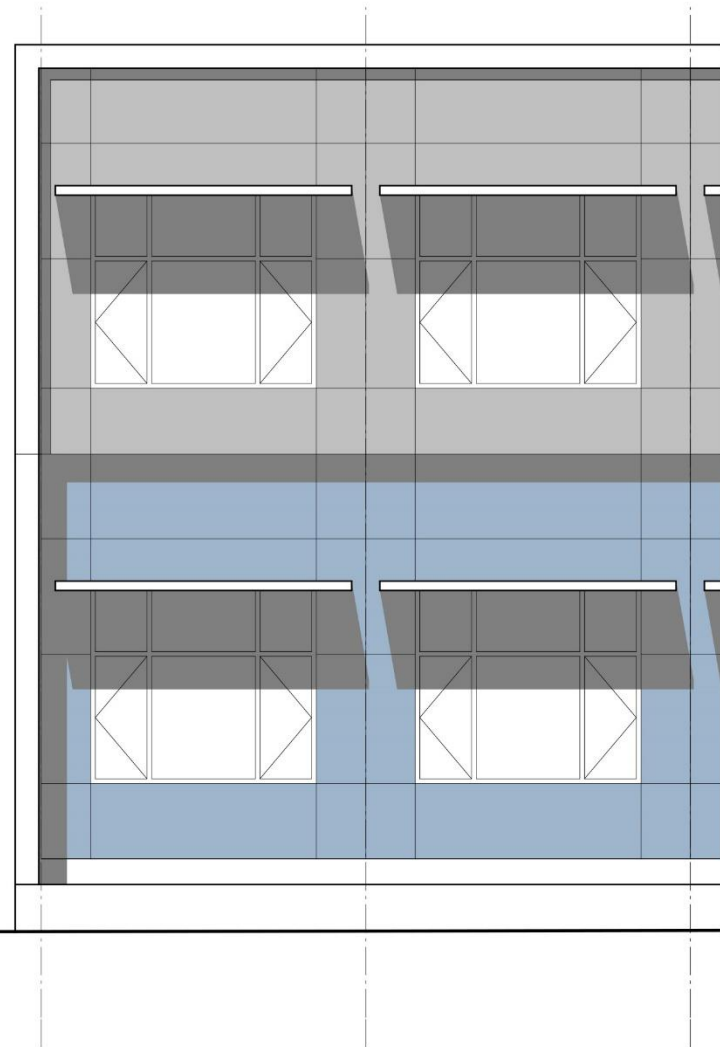
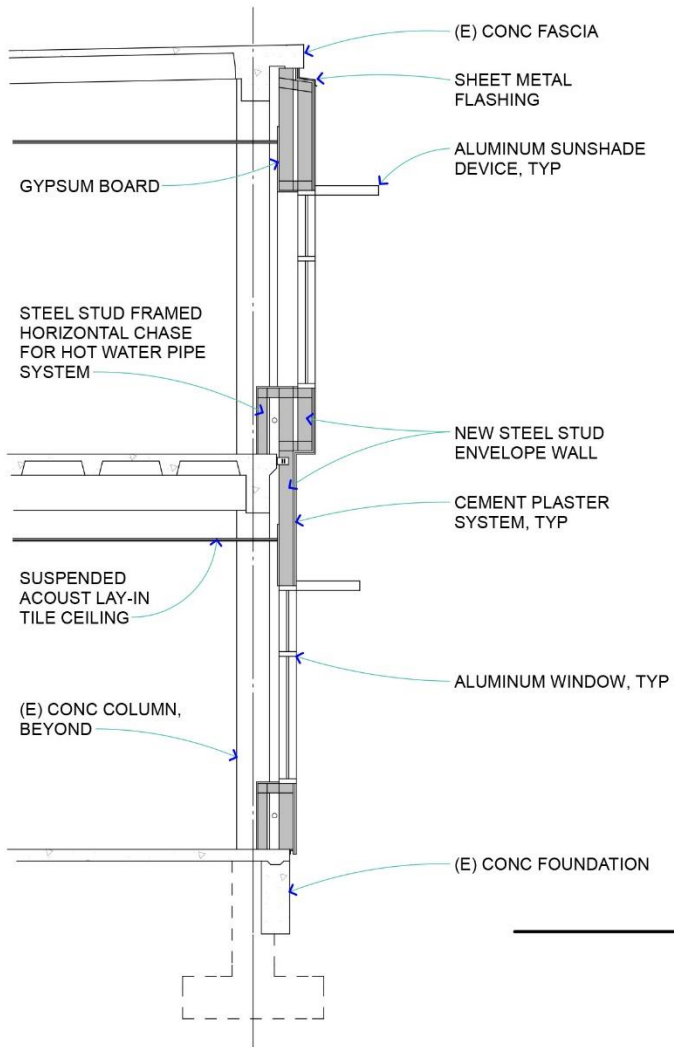
MAYA LIN SCHOOL (ALAMEDA UNIFIED SCHOOL DISTRICT)

North Side Elevation is Similar

SCALE 1"=20'-0"

SEPTEMBER 22, 2015





**SOUTH WALL SECTION & PARTIAL SOUTH EXTERIOR ELEVATION**

MAYA LIN SCHOOL (ALAMEDA UNIFIED SCHOOL DISTRICT)

SCALE 1/4"=1'-0"

SEPTEMBER 22, 2015



# Maya Lin School

## Project Cost Summary Update

Updated: September 23, 2015

Campus Budget (2014 Implementation Plan B) Phases 1 and 2	\$4,900,000
Escalation to 2015 dollars (5%)	\$245,000
<b>Campus Budget (2015)</b>	<b>\$5,145,000</b>
Soft Costs (30% of Total Project Budget)	\$1,543,500
<b>Current Construction Budget</b>	<b>\$3,601,500</b>

<b>Phase 1 and 2 Construction Projects</b>	<b>Phase</b>	<b>Timeline</b>	<b>Construction Cost/Allowance</b>
Reconfigure Preschool and Main Office - Estimated	Phase 1	2016	\$1,193,425
Comprehensive Window Replacement - Estimated	Phase 1	2016	\$1,612,043
Minor Mech, Elect. and Accessibility Improvements - Estimated	Phase 1	2016	\$139,596
Technology / Communication Upgrades - Allowance	Phase 1 or 2	2016 or 2017	\$398,580
Safety / Security Upgrades - Allowance	Phase 1 or 2	2016 or 2017	\$235,153

**Current Estimated Construction Costs and Allowances** **\$3,578,797**

### Notes:

1. Construction project estimates include 15% design contingency
2. Construction project estimates do not include costs for construction contingency, FF&E, or hazardous materials abatement.



# Thank You!



Quattrocchi Kwok Architects