



QUATTROCCHI KWOK
ARCHITECTS

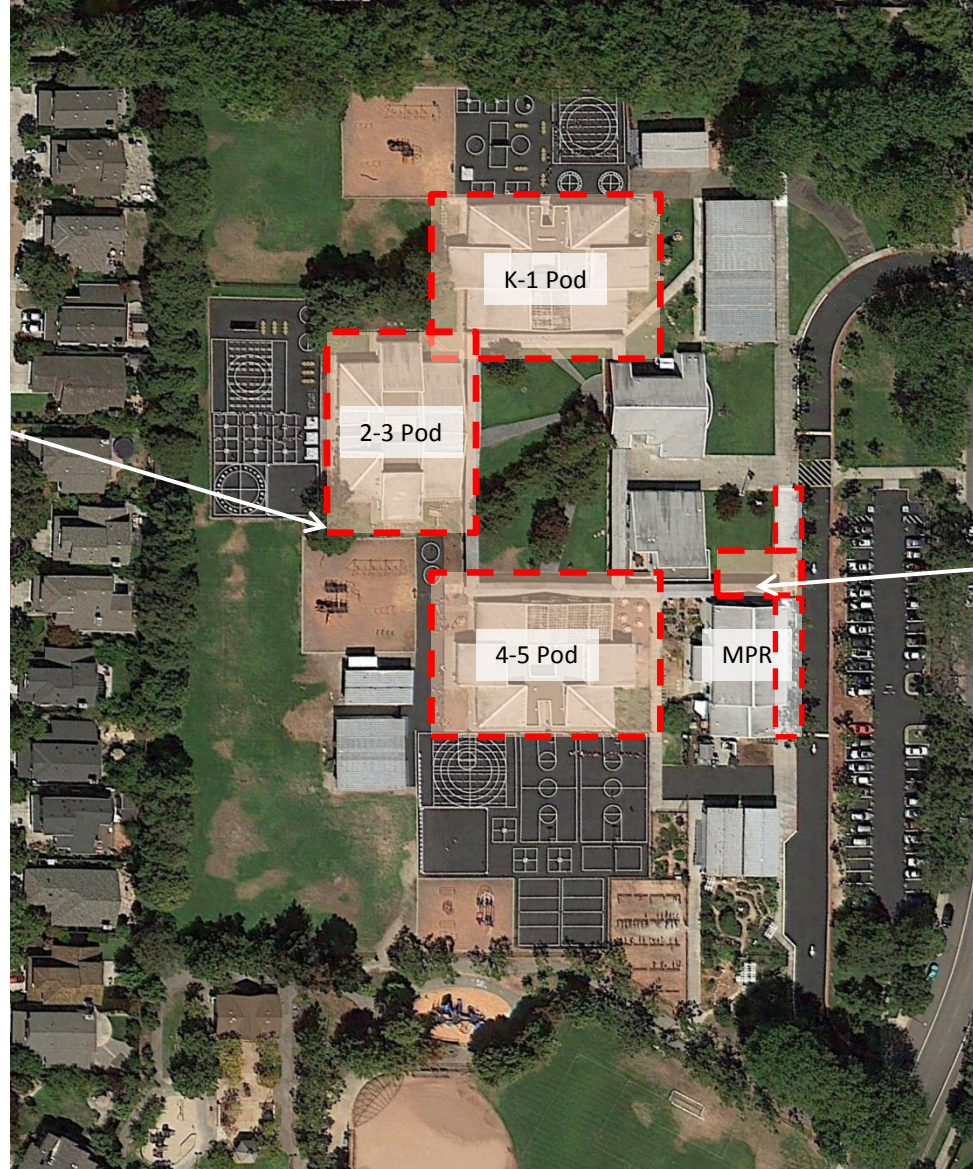
Bay Farm School

Site Accessibility Improvements

Schematic Design Presentation

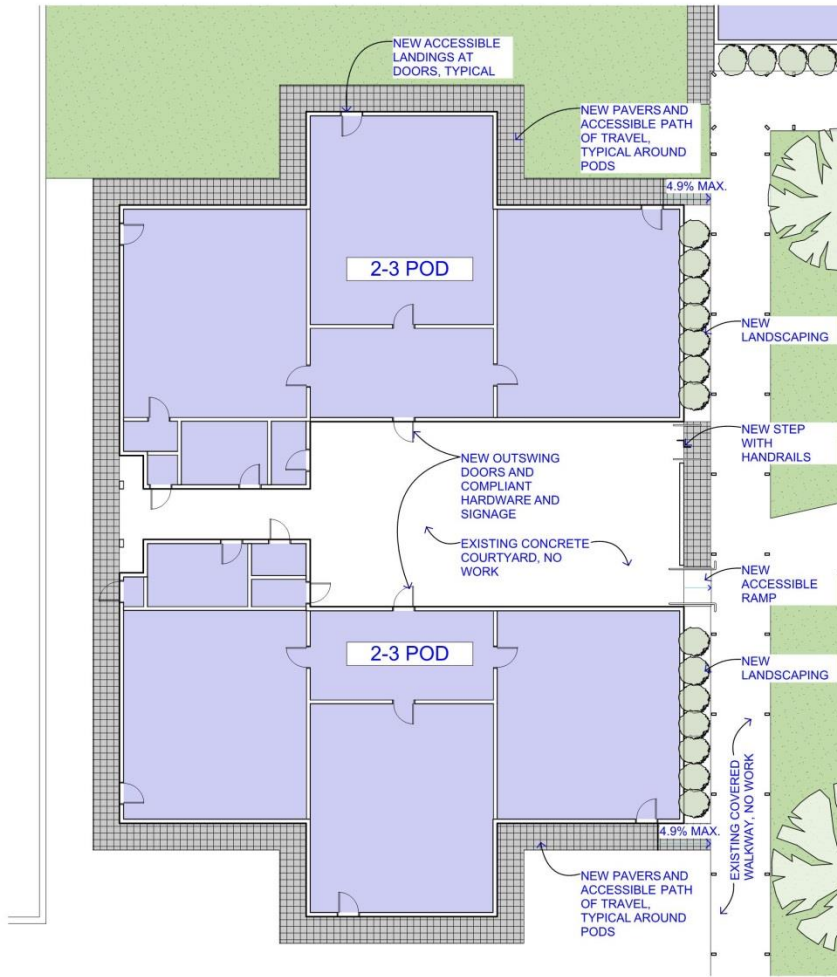
October 27, 2015

New accessible ramps,
stairs and path of travel at
each Pod

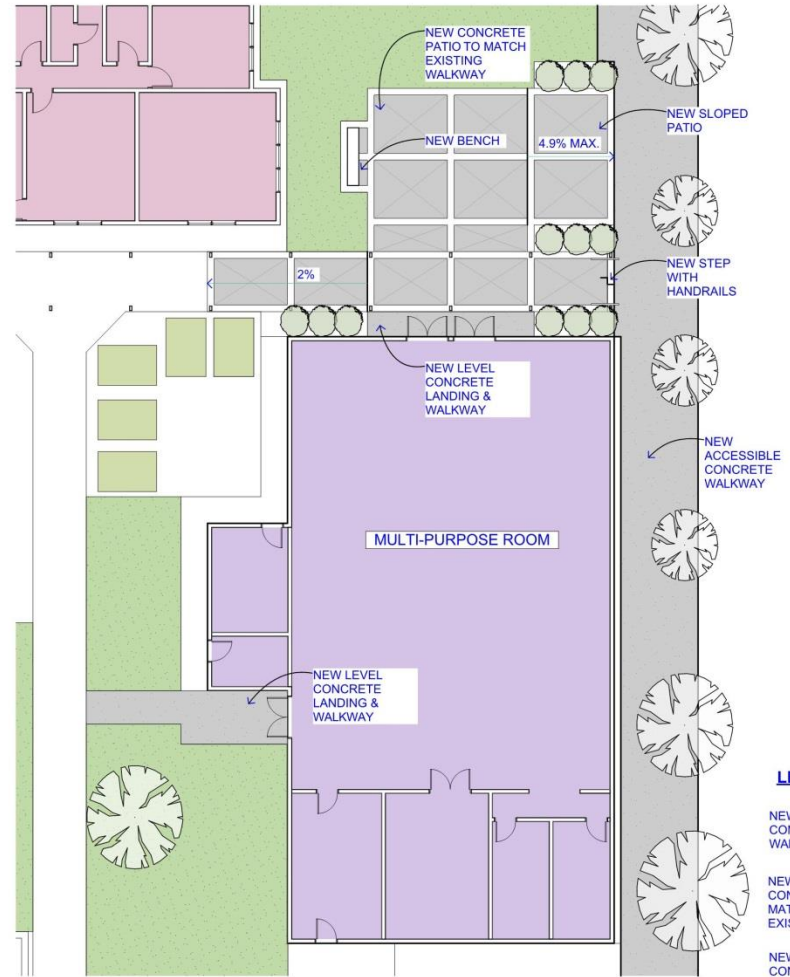


New accessible
entrance, courtyard
and walkway at
Multi-Purpose
Building








2-3 POD (OTHER PODS SIMILAR)



MULTI-PURPOSE ROOM

LEGEND

- NEW CONCRETE WALKWAY 
- NEW STAINED CONCRETE TO MATCH EXISTING 
- NEW CONCRETE PAVERS 

ENLARGED PLANS
BAY FARM SCHOOL

ALAMEDA UNIFIED SCHOOL DISTRICT



OCTOBER 27, 2015
SCALE: 1/8" = 1'-0"


QUATTROCCHI KWOK
ARCHITECTS

Bay Farm School

Project Cost Summary Update

Prepared: September 25, 2015

Campus Budget (2014 Implementation Plan B) Phases 1 & 2	\$6,300,000	
Escalation to 2015 dollars (5%)	\$315,000	
Campus Budget (2015)	\$6,615,000	
Soft Costs (30% of Total Project Budget)	\$1,984,500	
Current Construction Budget		\$4,630,500

Phase 1 & 2 Construction Projects	Phase	Construction Timeline	Construction Allowance
Roofing	Completed		\$0
Site improvements to address settlement	Phase 1	2016	\$1,178,909
Safety / Security Upgrades	Phase 1	2016	\$314,426
Technology / Communication Upgrades	Phase 2	2017	\$84,284
Four new classrooms building	Phase 2	2017	\$2,562,560
Critical mechanical / electrical upgrades	Phase 2	2017	\$240,927
Current Estimated Construction Cost Allowances			\$4,381,106

Allowances escalated to 2015 dollars **\$4,600,161**

Note: The numbers provided for Phase 1 and 2 Construction Projects are estimates or allowances until bidding is complete.



Thank You!

