

NEW BRITAIN PARKS, RECREATION AND COMMUNITY SERVICES DEPARTMENT

SUMMER CAMPS! 2022



**CAMP TOTALREC • CAMP CLUBHOUSE
LEADERS IN TRAINING • DOWNTOWN PLAYERS**

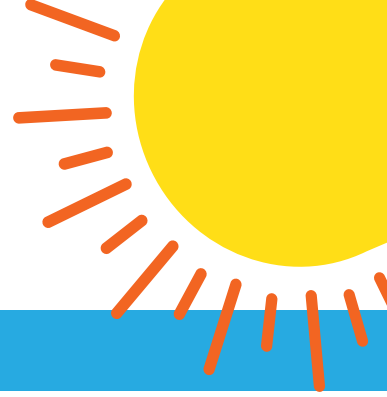
New Britain
PARKS, RECREATION
and Community Services Department

newbritain
Experience the NEW



www.nbparksnrec.org
860.826.3360

Camp Programs



HELLO SUMMER 2022!

The New Britain Parks, Recreation and Community Services Department is excited to welcome summer and share more about our camp offerings this year. Camp TotalRec will be open at AW Stanley Park, and Willow Brook Park. Leaders In Training Camp will return to involve our middle school emerging leaders in a leadership development camp. Downtown Players Theatre Camp will return back to Walnut Hill Park to learn, rehearse, and perform Disney's Frozen Jr.! We recognize that the last few years has been challenging; the goal for summer 2022 is to engage kids in summer camp programs. The New Britain Parks, Recreation and Community Services Department has worked hard behind the scenes to create a summer camp experience that will bring kids outside, away from screens, to make friends, play games, and participate in new experiences. Staff will facilitate ice breaker games and conversations that will create comfort right from the start. Campers will have the opportunity to explore their interests through sports, games, crafts, fun competitions and more!

POOL AND WATER FUN

Campers at AW and Willow Brook will have access to the pool facility for recreation swim each day between 1:00pm-2:30pm. The pool is staffed with certified lifeguards; camp staff joins the campers at the pool. Downtown Players Youth Theatre Camp will have sprinkler time scheduled daily. EVERY camper must wear a swimsuit and bring a towel to camp each day.



Camp Safety

Keeping campers safe while they attend camp and recreation programs is a priority of the New Britain Parks, Recreation and Community Services Department. This summer's camp program was designed around our long history of running camp and youth programming along with guidance from the State of Connecticut, Office of Early Childhood and the local health department for a safe summer environment as a result of the COVID-19 pandemic. More in depth information about all policies and procedures is available upon registration.

ILLNESS

We ask that families don't send their child to camp if they are not feeling well. This will greatly reduce the spread of illness at the camp program.

CLEANING

Camp spaces will be cleaned throughout the day; high-touch surfaces and equipment will be sanitized frequently. Hand-washing before and after meals will be normal practice.

Camp Staff

Summer camp staff go through a testing and interview process, trainings, and an orientation to work with participants. All camp staff are trained and certified in American Red Cross First Aid and CPR with AED Training. Many of the staff are "familiar faces" and have worked with the department in various capacities for many years.



Camp TotalRec

TUESDAY, JUNE 21ST - FRIDAY, AUGUST 5TH

CAMP DESCRIPTION

Camp TotalRec is a seven week day camp offered at two different locations for children who've completed grades 1-5. Campers will join their friends for a fun summer that will include enriching opportunities such as crafts, games, sports, special events, and theme days in a SAFE and FUN environment! During the seven weeks, campers will build friendships, explore their creativity and develop new skills all while having an unforgettable summer. Camp TotalRec is affordably priced and offers flexibility for parents in today's busy world by offering one week sessions or registration for all seven weeks!

CAMP FEATURES

- Breakfast & lunch is provided through the USDA summer food program
- Morning and afternoon transportation available at neighborhood stops
- American Red Cross swim lessons
- Recreation swim scheduled each day
- Fun weekly and daily camp themes
- Special events
- Optional field trips for an additional fee

DATES & TIMES

Camp TotalRec begins on Tuesday, June 21st and runs through Friday, August 5th, Monday through Friday. There is no camp held on Monday, July 4th.

FEE

\$40 per week/ \$250 for 7 weeks

Please note: Camp TotalRec programs are for New Britain residents only.

Camp TotalRec - AW Stanley Park

Grades: 1-5

Location: 2251 Stanley Street, New Britain, CT

Facility Features: newly renovated park with a new playground, zero depth entry pool with spray features and basketball court; nature trail, shaded picnic areas, chalet building, located near Holmes Elementary School and Jefferson Elementary School.
Rain location: Holmes Elementary School

Activity Number: 2940

Camp TotalRec - Willow Brook Park

Grades: 1-5

Location: 200 Mill Street, New Britain, CT

Facility Features: newly built pavilion, zero depth entry pool with spray features, athletic field with a track, soccer field, located near Northend Elementary School and Vance Elementary School.
Rain location: New Britain High School

Activity Number: 2943

REGISTRATION DEADLINE

Online registration: Monday at 11:59pm before the week attending camp.

In-office registration: Tuesday by 12:00pm before the week attending camp.



Daily Activities

TYPICAL DAY AT CAMP TOTALREC

A typical day at camp starts with breakfast at approximately 9:00am followed by a morning circle where campers engage in conversation topics, a quick stretch and/or morning chants to get excited for the day ahead! Groups then jump into fun camp activities such as sports games, board games, arts & crafts and more! Once campers have worked up an appetite after morning activities, lunch is typically scheduled for noon. Each day includes recreation swim at the pool. The daily schedule may vary at each camp site.

ARRIVAL/DEPARTURE

Participants are scheduled to arrive between 8:30am and 9:00am. There will be staggered drop-off and pick-up times to reduce crowding. Participants are scheduled to be dismissed between 2:50pm and 3:15pm. Campers can be dismissed one of two ways: bus or parent pick-up. Check out the next page for TotalRec bus information.

Weekly Themes & Special Events

CAMP TOTALREC WEEKLY THEMES

Activities and programming tie into the weekly themes.

Week 1: Amazing Adventures Week

Week 2: Camping Adventure Week

Week 3: Secret Spy School Week

Week 4: Spirit Week

Week 5: Camp Challenge Week

Week 6: Around the World Week

Week 7: Hollywood Stars Week

SPECIAL EVENTS

Special Guest Days are held at camp. TotalRec campers at AW Stanley can invite a family member or friend as a special guest on Tuesday, July 12th. TotalRec campers at Willow Brook can invite a family member or friend as a special guest on Thursday, July 14th.

The Annual Mayor's Pencil Hunt will be held on Tuesday, July 26th at Walnut Hill Park. All TotalRec campers will be bussed off-site for this event. The Mayor of New Britain will kick off the morning with a pencil and candy hunt. The event will include inflatable amusements, water activities, performances, and lunch-time treats.

Field Trips

Field trips are planned for both Camp TotalRec sites for an additional fee. The registration deadline for all paid trips is 2 weeks prior to the date of the trip, however space is limited and trips may reach capacity before the deadline. All field trip participants must be registered for the week of camp in order to attend the field trip offered during that week. Fee-based trips are optional; camp will be open for those campers who do not register for field trips.

Day at the Movies

(Picture Show, Berlin)

Date: Wednesday, July 6th

Fee: \$17.00

Activity Number: 2830

Registration Deadline: Wednesday, June 22nd or until capacity is reached

Fun City Trampoline Park

(New Britain)

Date: Wednesday, July 13th

Fee: \$24.00

Activity Number: 2831

Registration Deadline: Wednesday, June 29th or until capacity is reached

Spare Time Bowling

(Bristol)

Date: Wednesday, July 20th

Fee: \$24.00

Activity Number: 2832

Registration Deadline: Wednesday, July 6th or until capacity is reached

Camp Clubhouse

Camp Clubhouse is a before and after camp program available to Camp TotalRec participants at Camp TotalRec locations. Camp Clubhouse includes fun passive and physical activities similar to the camp day. The before and after care hours offer flexibility for families. Transportation is not available for Camp Clubhouse.

Camp Clubhouse - Before Care

Time: 7:30am - 8:30am

Fee: \$25 per week/ \$175 for 7 weeks

AW Activity Number: 2920

Willow Brook Activity Number: 2924

Camp Clubhouse - After Care

Time: 3:15pm - 5:30pm

Fee: \$35 per week/ \$245 for 7 weeks

AW Activity Number: 2921

Willow Brook Activity Number: 2925

Bus Transportation



Bus transportation is offered to Camp TotalRec and LIT participants. Bus registration should be completed during the camp registration process. Bus route and stop locations are pre-determined before camp begins and are located in neighborhood/school/park areas based on site safety conditions. Changes to bus stop assignments will not be made after 12:00pm on the Tuesday before the week attending camp. Morning and afternoon bus stops must be the same location; multiple bus stops are not allowed.

AW TOTALREC and L.I.T. BUS ROUTE/STOPS

AW CAMP TOTALREC AND L.I.T. BUS ROUTE/STOPS

AW Camp TotalRec/LIT – bus route #1	Morning	Afternoon	
NBHS (main parking lot)	7:50am	4:10pm	A PINK bus magnet will identify this bus as a “Summer Camp” bus
Roosevelt School (parking lot)	8:00am	4:00pm	
Chesley Park (Wildwood St. at bath house)	8:05am	3:55pm	
Morning: ARRIVE TO AW and Afternoon: PICK UP FROM AW	8:20am	3:40pm	
AW Camp TotalRec/LIT – bus route #2	Morning	Afternoon	
Northend School (Bassett Street)	8:40am	3:30pm	A YELLOW bus magnet will identify this bus as a “Summer Camp” bus
Smalley School (bus loop)	8:50am	3:20pm	
Washington Park (at park building on Carmody Street)	9:00am	3:10pm	
Morning: ARRIVE TO AW and Afternoon: PICK UP FROM AW	9:10am	3:00pm	
AW Camp TotalRec/LIT – bus route #3	Morning	Afternoon	
Gaffney School (front parking lot)	7:50am	4:15pm	A BLUE bus magnet will identify this bus as a “Summer Camp” bus
Jefferson School (parking lot)	7:55am	4:10pm	
Stanley Quarter Park (boat house)	8:05am	4:00pm	
Morning: ARRIVE TO AW and Afternoon: PICK UP FROM AW	8:10am	3:50pm	
AW Camp TotalRec/LIT – bus route #4	Morning	Afternoon	
Walnut Hill Park (gazebo across from Park Place)	8:30am	3:30pm	A ORANGE bus magnet will identify this bus as a “Summer Camp” bus
Central Park (West Main Street/north end of park by flag poles)	8:35am	3:25pm	
Vance School (parking lot)	8:40am	3:20pm	
Lincoln School (Steele St bus loop)	8:45am	3:15pm	
Morning: ARRIVE TO AW and Afternoon: PICK UP FROM AW	9:00am	3:00pm	

*Bus transportation is not available for Downtown Players Youth Theatre Camp



Bus Transportation

Bus transportation is offered to Camp TotalRec participants. Bus registration should be completed during the camp registration process. Bus route and stop locations are pre-determined before camp begins and are located in neighborhood/school/park areas based on site safety conditions. Changes to bus stop assignments will not be made after 12:00pm on the Tuesday before the week attending camp. Morning and afternoon bus stops must be the same location; multiple bus stops are not allowed.

WILLOW BROOK TOTALREC BUS ROUTE/STOPS

WILLOW BROOK CAMP TOTALREC BUS ROUTE/STOPS			
Willow Brook Camp TotalRec – bus route #1		Morning	Afternoon
Chesley Park (Wildwood St. at bath house)		7:50am	4:15pm
Roosevelt School (parking lot)		7:55am	4:10pm
Central Park (West Main Street/north end of park by flag poles)		8:05am	4:00pm
Morning: ARRIVE TO WB and Afternoon: PICK UP FROM WB		8:15am	3:50pm
Willow Brook Camp TotalRec – bus route #2		Morning	Afternoon
Gaffney School (front parking lot)		8:35am	3:30pm
Washington Park (at park building on Carmody Street)		8:45am	3:20pm
Smalley School (bus loop)		8:55am	3:10pm
Morning: ARRIVE TO WB and Afternoon: PICK UP FROM WB		9:15am	3:00pm
Willow Brook Camp TotalRec – bus route #3		Morning	Afternoon
Jefferson School (parking lot)		7:50am	4:15pm
Holmes School (parking lot)		8:00am	4:05pm
Stanley Quarter Park (boat house)		8:05am	4:00pm
Morning: ARRIVE TO WB and Afternoon: PICK UP FROM WB		8:20am	3:45pm
Willow Brook Camp TotalRec – bus route #4		Morning	Afternoon
Northend School (Bassett Street)		8:30am	3:35pm
Walnut Hill Park (gazebo across from Park Place)		8:40am	3:25pm
Lincoln School (Steele St bus loop)		8:50am	3:15pm
Vance School (parking lot)		8:55am	3:10pm
Morning: ARRIVE TO WB and Afternoon: PICK UP FROM WB		9:00am	3:00pm

A **PINK** bus magnet will identify this bus as a “Summer Camp” bus

A **YELLOW** bus magnet will identify this bus as a “Summer Camp” bus

A **BLUE** bus magnet will identify this bus as a “Summer Camp” bus

A **ORANGE** bus magnet will identify this bus as a “Summer Camp” bus

*Bus transportation is not available for Downtown Players Youth Theatre Camp



Leaders in Training

TUESDAY, JUNE 21ST - FRIDAY, AUGUST 5TH

CALLING ALL YOUTH LEADERS!

CAMP DESCRIPTION

Leaders In Training is a 7-week leadership development summer camp. Throughout the 7 weeks of camp, LIT's will focus on problem solving, group leadership, professionalism, character development, communication, teamwork, time management, decision making, safety, responsibility, and respect.

Each candidate will undergo a screening process that consists of submitting 2 letters of recommendation (from a non-relative) and taking part in an oral interview (the recreation office will reach out to schedule an interview).

LIT Camp is a fun, hands on learning program that is designed for aspiring leaders that will work together to strengthen their own individual leadership. Active participation is a requirement of the program and campers are encouraged to attend all 7 weeks.

Breakfast, lunch, bus transportation and uniform provided.

Mandatory Orientation: Thursday, June 16th

STEPS FOR APPLICATION PROCESS

- 1.) Obtain 2 letters of recommendation from a non-relative (i.e. teacher, coach, etc.)
- 2.) Complete registration form
- 3.) Submit \$50 deposit, registration form, and 2 letters of recommendation to the recreation office.
- 4.) Applicants will be contacted to interview upon receiving all completed documentation.

Registration Deadline: May 27, 2022

DATES & TIMES

Leaders In Training begins on Tuesday, June 21st and runs through Friday, August 5th, Monday through Friday; there is no camp held on Monday, July 4th. Hours of operation are 9:00am-3:00pm.

FEE

\$300 for 7 weeks (\$50 deposit; \$250 balance due before Friday, June 17th)

Leaders in Training Camp

Grades: completed 6-8

Location: AW Stanley Park, 2251 Stanley Street, New Britain, CT

Activity Number: 2926

(Mail or in office registration only)



FRIENDSHIP



ADVENTURE



TEAMWORK

Register online at www.nbparksnrec.org



nbparksnrec

860-826-3360

Downtown Players

TUESDAY, JUNE 21ST - FRIDAY, JULY 30TH

CAMP DESCRIPTION

The Downtown Players Youth Theatre Camp returns this summer with a fun and exciting production of Disney's Frozen Jr.! Group members engage in show rehearsals, theatre workshops, set design, and recreational activities as they work towards a grand performance. This summer's camp features workshops in acting, character development, stage/set design, improv, voice projection, team building and movement. Lead roles are considered for campers who are enrolled all summer. The camp day also features breakfast and lunch through the USDA Summer Food Program and sprinkler time each day to cool off (proper swim attire is required).

Bus transportation is not provided.

DATES & TIMES

Downtown Players Youth Theatre Camp begins on Tuesday, June 21st and runs through Friday, July 29th, Monday through Friday. There is no camp held on Monday, July 4th. Hours of operation are 9:00am-3:00pm.

FEE

\$85 per week/ \$475 for 6 weeks



Downtown Players Youth Theatre Camp

Ages: 7-14 years old

Location: Walnut Hill Park/Darius Miller Band Shell, 199 Grand Street, New Britain, CT

Facility Features: newly renovated playground, baseball fields, walking loop and the Darius Miller Band Shell.

Activity Number: 2927



Performance Night Details

Date: Thursday, July 28, 2022

Time: 7:00pm

Location: Walnut Hill Park/Darius Miller Band Shell, 199 Grand Street, New Britain, CT

Free admission for families, friends and community

Camp Registration

REGISTRATION FOR 2022 SUMMER CAMPS

In-office Registration: visit the New Britain Parks and Recreation Department, Monday - Friday, 8:15am - 3:45pm located at 27 West Main Street, room 302, New Britain to submit a registration form.

Online Registration:

- Visit www.NBParksnRec.org
- Log in or create an account
- Update household information (addresses, phone numbers, emergency contacts, etc.)
- Search for your camp program (camp links can be found on the home page)
- Complete registration and submit payment
- Check your email for a confirmation receipt. The email will include an attachment with required paperwork that must be submitted to the Parks and Recreation Department by the Wednesday before the week attending camp. (Copies of this paperwork are available in office.)

For questions, call the Parks and Recreation Department at 860-826-3360.

REGISTRATION DEADLINE

All online registrations must be completed by Monday at 11:59pm before the week attending camp. All in-office and mail-in registration must be received, with payment, by 12:00pm on the Tuesday before the week attending camp. No exceptions.

Registration deadlines are necessary to allow sufficient time for the processing of weekly rosters; they will be strictly enforced for the safety of all participants.

Recreation Program Assistance

Financial assistance is available to New Britain families to help manage the cost of recreational programming fees and allows youth programming to be easily accessible. The New Britain Parks, Recreation and Community Services Department is committed to serving as many eligible families in need as funding allows. Requests will be reviewed in the order they are received and may take up to ten (10) business days for processing.

The application process includes an application, a written statement indicating the level of need and evidence of financial records. You will be notified regarding the status of your application. Incomplete applications will not be reviewed. More information on program assistance can be found at www.NBParksNRec.org or in office.

Refund Policy

Refunds for recreational programs will be considered up to one week prior of the program. If granted, all refunds must be processed through the New Britain Finance Department, via city-issued check. Refunds processed through the Finance Department require a social security number and take a minimum of two weeks to process. Refunds made by credit or debit take 1-3 business days to process and do not require a social security number; funds will be returned directly to the card used for original payment. The Parks, Recreation & Community Services Department suggest the use of credit or debit cards when registering for programs.

SUMMER POOL TIME!

POOLS OPEN ON SATURDAY, JUNE 18TH!

POOLS

A.W. Stanley Park Pool
2161 Stanley Street, New Britain, CT
Willow Brook Park Pool
80 Mill Street, New Britain, CT

RATES

Daily General Admission Rates:
\$4.00 (ages 18 and older)
\$3.00 (ages 6-17)
FREE (ages 5 and under)

*Swimsuits are required to gain entry on the pool deck

POOL PASS INFO

Family Pool Pass..... \$50.00

Individual Pool Pass..... \$30.00

FLICK N' FLOAT EVENTS

ENCANTO

Willow Brook Pool
Friday, July 8, 2022

Gates open at 8:00 P.M. | Fee: \$3.00 per person

LUCA

A.W. Stanley Park Pool
Friday, August 5, 2022



For more information visit www.nbparksnrec.org

STAY COOL THIS SUMMER!

Visit one of our parks!



A.W. STANLEY PARK

2169 Stanley Street, New Britain, CT

Daily Pool Hours

Public Recreation Swim: 1:00pm to 4:45pm

Family & Adult Swim: 6:15pm to 7:45pm

WILLOW BROOK PARK

80 Mill Street, New Britain, CT

Daily Pool Hours

Public Recreation Swim: 1:00pm to 4:45pm

Family & Adult Swim: 6:15pm to 7:45pm



CHESLEY PARK

23 Wildwood Street, New Britain, CT

Daily Splash Pad Hours

Memorial Day through Labor Day Weekend
10:00am to 8:00pm

FREE ADMISSION



WILLOW STREET PARK

43 Willow Street, New Britain, CT

Daily Splash Pad Hours

Memorial Day through Labor Day Weekend
10:00am to 8:00pm

FREE ADMISSION

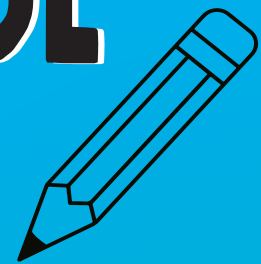


New Britain Parks, Recreation and Community Services Department

“Every Kid Counts”

FREE!

AFTER SCHOOL PROGRAM



September 26, 2022- May 26, 2023
After school until 5:45pm
***Full days of school**

The program includes:

Homework help • Recreational activities
Academic enrichment • Bus transportation
Family events • Dinner & much more!

Registration:

After School Program registration will be available at the beginning of September.
*Available on a first come, first serve basis.
Visit www.nbparksnrec.org for more information.



Offered at these schools:

Chamberlain
DiLoreto
Gaffney
Holmes
Jefferson
Lincoln
Northend
Smalley
Smith
Vance

New Britain
**PARKS,
RECREATION**
and Community Services Department



NEW BRITAIN PARKS, RECREATION AND COMMUNITY SERVICES DEPARTMENT

SUMMER 2022

JOIN OUR CAMP CREW!

HEY
CAMPER!



Grades
1-5

Recreation Camp



Grades
6-8

Leadership Camp



Ages
7-14

Theatre Camp

Summer Camp Registration opens May 2, 2022!