

# AUSD District Standards

---

## Site Safety and Security

School Board Presentation 27 October 2015



QUATTROCCHI KWOK  
ARCHITECTS

# Measure I Bond Issue

---

## Language for Site Safety and Security

From Exhibit B of Measure I bond:

### Safety and Security Projects

Goal and Purpose: Since good, safe and up-to-date schools help protect and improve local property values and reduce maintenance and operating costs, returning more money to the classroom, District-owned sites will benefit from a variety of safety and security projects.



# Measure I Bond Language

---

## Language for Site Safety and Security

- Upgrade fire alarm systems to automatic systems.
- Modernize schools and classrooms to improve access for students with disabilities.
- Update student pick-up and drop-off areas to enhance student and community safety.
- Upgrade and install new security systems, such as security lighting, fencing, door keys, smoke detectors, and fire alarms and sprinklers.
- Secure the perimeter of school sites.
- Replace aging, outdated portables with permanent classrooms.
- Upgrade emergency communication systems to improve student safety.
- Remove hazardous materials like asbestos and lead paint from older school sites.
- Improve earthquake safety.
- Upgrade schools to meet handicap accessibility requirements.

# Implementation Plan

---

- The Board took action to approve the Implementation Plan B on June 10, 2014.
- Implementation Plan B includes Safety and Security Measures at all Sites.
- Safety and Security District Standards project began on May 19, 2015.
- Committee composed of MOF Staff, Site Principals.

## NOTE:

**Not all Safety and Security Measures will be completed as part of current Implementation Plan.**



# Safety and Security Committee

---

## DISTRICT

Robbie Lyng, Maintenance, Operations and Facilities

Shariq Khan, Interim CBO, AUSD

Rob van Herk, Director Technology Services

Kelly Lara, Student Services

Susan Davis, Director of Communications

Brenda Parella, Maintenance, Operations and Facilities

## SCHOOL STAFF AND COMMUNITY

Kirsten Zazo, Encinal High School

Robert Ithurburn, Alameda High School

Michael Hans, Lincoln Middle School

Cheryl Wilson, Ruby Bridges Elementary School

Cammie Harris, Wood Middle School

Babs Freitas, Bay Farm Elementary School

Aurora Sweet, Edison Middle School

Kelly Lara, Student Services

Hank Morten, Alameda Police Department

## MEETINGS:

May 19, 2015 Committee Meeting #1

June 2, 2015 Committee Meeting #2

June 16, 2015 Committee Meeting #3

July 8, 2015

Door hardware consultant Meeting

August 6, 2015

Door hardware and security  
consultant Meeting

September 15, 2015

Committee Meeting #4

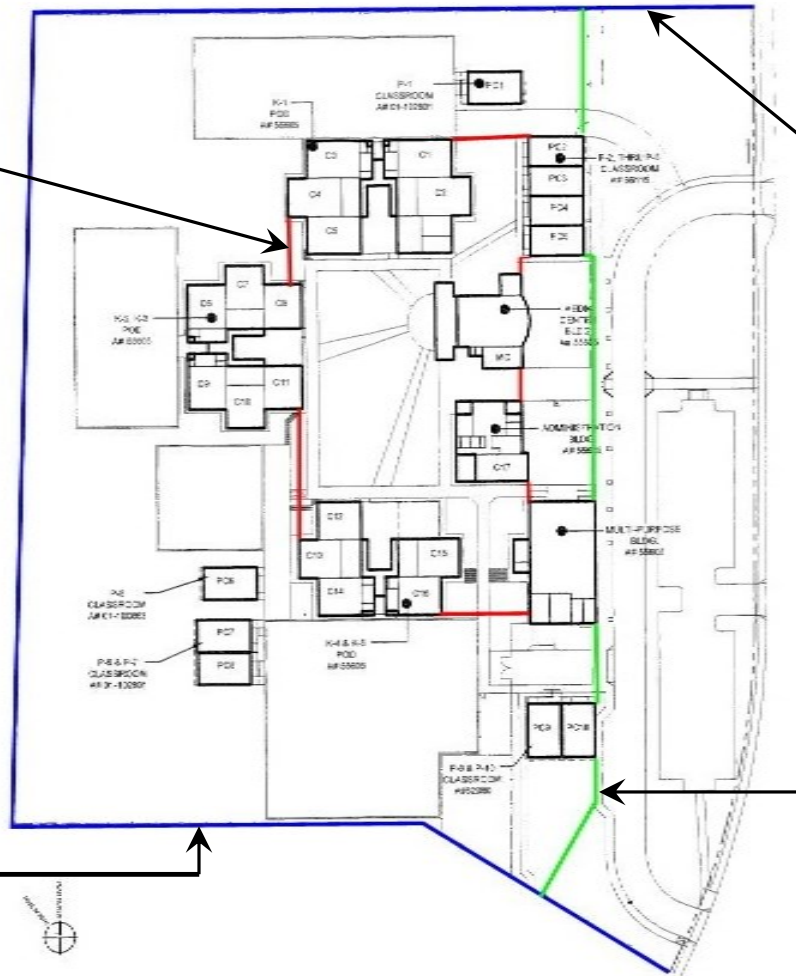


## Committee's recommendation for Fencing and Gates

(Typical at all schools)



## Inner Core Fencing



## Perimeter Fencing



## Athletic Fencing



## Ornamental Fencing

# Committee's recommendation for Location of Administration

Typical at all schools as budgets allow. May not occur within this implementation plan or with funds from this current bond.





# Committee's recommendation for Windows and Glazing

(Typical at all schools for new or renovated windows)



Windows on outdoor gathering areas



Windows on entrance for surveillance

## Glazing Types:

- Tempered (typical where required by code)
- Laminated (typical where required by code and as budget allows on site-by-site basis)
- Security film (as budget allows on site by site basis). Not budgeted in the Master Plan (this is a request from the committee.)



Tempered glass  
breaking pattern



Laminated glass  
breaking pattern



Glass with security film  
breaking pattern



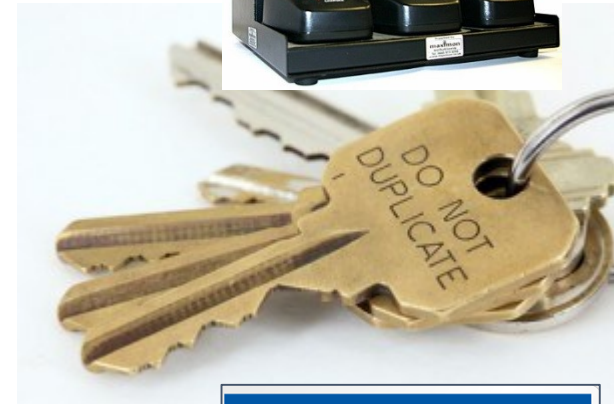
# Committee's recommendation for Policies and Procedures

(Typical at all schools)

Policies and procedures should be established in order to help protect the life, property, and security of the school district facilities and all its occupants.

## Examples:

- Staff Radios: Staff shall ensure radio batteries are charged at all times, and MOF shall conduct periodic emergency checks.
- Key Management: Electronic key management system shall be strictly enforced. Cardkey systems will control access for leased spaces. Loaning of keys is prohibited.
- Campus and building access: Strict policies shall be in place to control when doors and gates shall be locked and unlocked. Propping open of doors and gates shall be prohibited.



# Committee's recommendation for Door Locks and Access Control

(Typical at all schools)



Keycard system at primary entry points



Heavy Duty Strike Plates and Door Hardware



Classroom Doors  
Lockable from the inside  
via push button

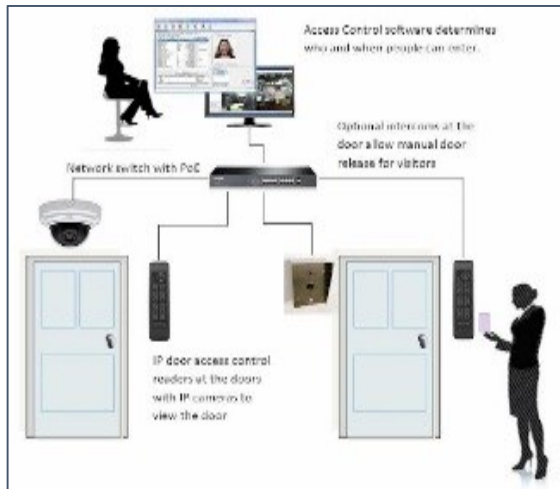
**Policy Note: Site Staff to carry keys with them at all times. Loaning of keys is prohibited as this could create safety and financial impact if keys are lost**



Panic Hardware required by code at rooms over 1000 sq. ft (Requires a key)

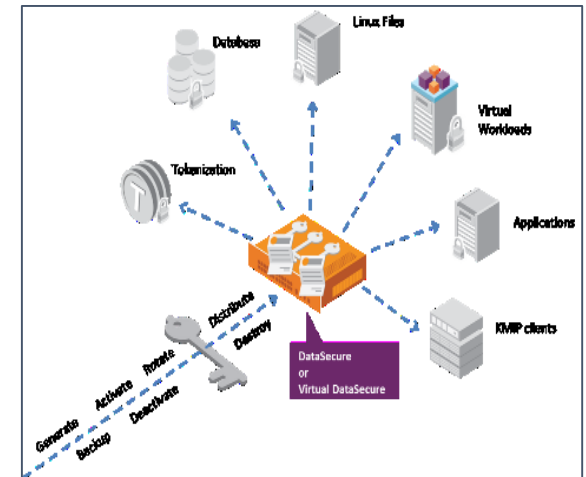
# Committee's recommendation for Security Management and Communication

(Typical at all schools)



Integrated Video, door monitoring and Staff Radios  
intrusion alarm systems

Policy Note: Site Staff to carry keys with them at all times. Loaning of keys is prohibited as this could create safety and financial impact if keys are lost



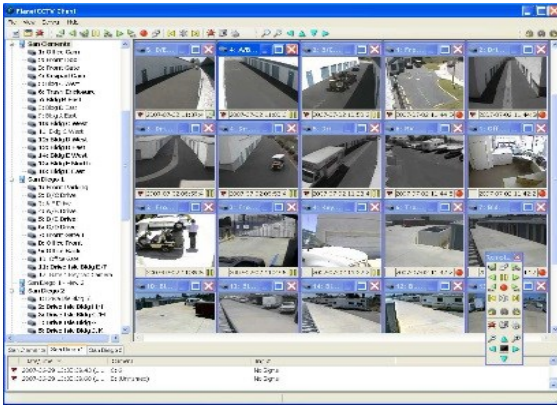
Integrated Key Management  
systems



VoIP Communication Systems

# Committee's recommendation for Video Surveillance and Site Lighting

(Typical at all schools at Primary Entry Points and select gathering areas on site-by-site basis)



Video Surveillance



Video monitored on an occurrence basis  
(not continuous monitoring)



Building Lighting



Site Lighting



# Committee's recommendation for Site Access Safety and Security

(Typical at all schools)



Lockable Storage



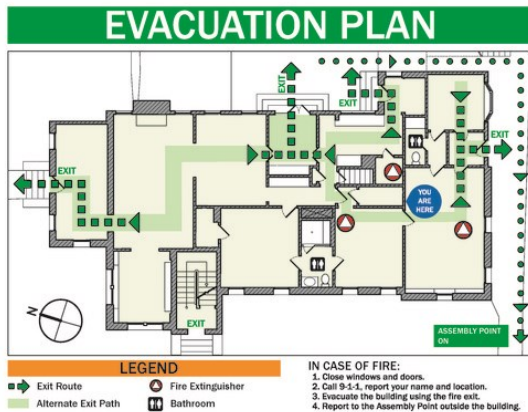
Parking and Drop off Design



Secure Bike Storage

# Committee's recommendation for Disaster Preparedness

(Typical at all schools)



Evacuation and safe dispersal plans



Disaster Supplies Container  
away from Structures



District has established an emergency response plan in collaboration with the Alameda Police Department



# QUESTIONS

---

