



MILLER PACIFIC
ENGINEERING GROUP

October 24, 2017
File: 1911.038altr.doc

Alameda Unified School District
2060 Challenger Drive
Alameda, California 94501

Attention: Chad Pimentel, Legal Counsel for AUSD

Re: Geotechnical Engineering Investigation
Evaluation of Liquefaction Risk and Liquefaction Induced Settlement Potential
Alameda High School Campus
2201 Encinal Avenue
Alameda, California

Introduction

This letter summarizes our geotechnical investigation of the Alameda High School Campus located at 2201 Encinal Avenue in Alameda, California. The approximate site location is presented on Figure 1, Site Location Map. The purpose of our geotechnical investigation is to evaluate the site soil and groundwater conditions and to assess the liquefaction risk and liquefaction induced settlement potential across the school campus. Our scope includes exploring the subsurface conditions with five Cone Penetration Tests (CPTs), conducting engineering analyses to evaluate the liquefaction risk and liquefaction induced settlement potential, and presentation of our geotechnical conclusions in this letter report.

Site Description

The Alameda High School campus is located on the northerly side of Encinal Avenue, between Oak Street and Walnut Street in Alameda, as shown on the Site Location Map, Figure 1. The existing campus consists of numerous permanent and portable buildings, paved driveways, parking areas, and play areas, and landscaping improvements, as shown on the Site Plan, Figure 2. The ground surface at the project site and the surrounding area is characterized by nearly level to slightly sloping terrain.

Regional Geology

The site is located within the Coast Range Geomorphic Province of California. The regional bedrock geology consists of complexly folded, faulted, sheared, and altered sedimentary, igneous, and metamorphic rock of the Franciscan Complex. Bedrock is characterized by a diverse assemblage of greenstone, sandstone, shale, chert, and melange, with lesser amounts of conglomerate, calc-silicate rock, schist and other metamorphic rocks.

The regional topography is characterized by northwest-southeast trending mountain ridges and intervening valleys that were formed by movement between the North American and the Pacific Plates. Continued deformation and erosion during the late Tertiary and Quaternary Age (the last several million years) formed the prominent coastal ridges and the inland depression that is now the San Francisco Bay. The more recent seismic activity within the Coast Range

Geomorphic Province is concentrated along the San Andreas Fault zone, a complex group of generally north to northwest trending faults.

Geologic mapping¹ indicates the site is located in an area underlain by dune sands, as shown on Figure 3. No significant artificial (manmade) fills or soft clay (Bay Mud) underlie the subject site.

Surface Conditions

The site is currently developed as a high school campus. The attached Site Plan, Figure 2, shows the locations of existing buildings, driveways, and play areas. Most of the ground surface immediately around the existing buildings consists of asphalt paved surfaces.

Seismicity

The San Francisco Bay Region is located in a seismically active area and the existing improvements will therefore experience the effects of future earthquakes. Such earthquakes could occur on any of several active faults within the region. These faults are shown on the Active Fault Map, Figure 4.

Subsurface Exploration and Laboratory Testing

We explored the subsurface soil and groundwater conditions with five Cone Penetration Tests (CPTs) at the approximate locations shown on the Site Plan, Figure 2. The CPTs were conducted with truck-mounted equipment on May 23, 2017. The CPTs were extended to depths of 46 feet to 80 feet below the ground surface. A schematic of the CPT apparatus is provided on Figure A-1 and a CPT Soil Interpretation Chart is provided on Figure A-2. CPT logs are shown on Figures A-3 through A-7.

Subsurface Conditions

The subsurface conditions are consistent with the mapped geology. Review of subsurface data collected from the CPTs conducted at the site indicate that the campus is generally underlain by approximately six to ten feet of loose to medium-dense dune sand underlain by predominantly medium-dense to dense silty sand and sandy silt extending to a depth of 50 feet or more.

Groundwater was measured at approximately 8.5 feet below the ground surface during our CPT investigations. It is anticipated that the groundwater level beneath the site is influenced by tidal activity in the nearby San Francisco Bay.

¹ Graymer, R. W., "Geologic Map and Map Database of the Oakland Metropolitan Area, Alameda, Contra Costa, and San Francisco Counties, California", 2000, USGS, MF-2342 Version 1.0., Scale 1:50,000.

Given the low site elevations and proximity to San Francisco Bay, the highest historic groundwater elevation is assumed to coincide with the ground surface.

Liquefaction Risk and Liquefaction Induced Settlement Potential

The project site lies within a California Seismic Hazard Zone of Required Investigation for Liquefaction, as mapped by CGS (2003).

Liquefaction refers to the sudden, temporary loss of soil shear strength during strong ground shaking. Liquefaction-related phenomena include liquefaction-induced settlement, flow failure, and lateral spreading. These phenomena can occur where there are saturated, loose, granular deposits. Recent advances in liquefaction studies indicate that liquefaction can occur in granular materials with a high fines content (35 to 50% clayey and silty materials that pass the #200 sieve) provided the fines exhibit a plasticity less than 7. Granular layers with a potential for liquefaction were observed during our subsurface exploration.

To evaluate soil liquefaction, the seismic energy from an earthquake is compared with the ability of the soil to resist pore pressure generation. The earthquake energy is termed the cyclic stress ratio (CSR) and is a function of the maximum credible earthquake peak ground acceleration (PGA) and depth. The soil resistance to liquefaction is based on the relative density, and the amount and plasticity of the fines (silts and clays). The relative density of cohesionless soil is correlated with Cone Penetration Test data measured in the field.

We analyzed the potential for liquefaction utilizing the CPT Liquefaction Assessment software program CLiq (2007, ver. 2.1.6.9), and the procedures outlined by Idriss and Boulanger (2014). The design seismic conditions consisted of a magnitude 7.3 earthquake producing a PGA of 0.63g, which corresponds to the PGA_M per ASCE 7-10 Section 11.8.3, and assuming groundwater at the ground surface. The results of our liquefaction analyses are presented on Figures 5 through 9, and indicate granular soil layers observed between roughly three and ten feet, and discontinuous lenses between roughly 21 and 52 feet below the ground surface classify as liquefiable during the design seismic event. Therefore, we judge the risk of liquefaction at the site is moderate to high.

Potential liquefaction of sandy layers between three and ten feet below the ground surface may result in ground surface settlement of between roughly 1.5-inches to 3.0-inches, based on the liquefaction analyses discussed above, and as shown on Figures 5 through 9. Potential liquefaction induced differential ground surface settlement within a given building footprint area is estimated to be approximately one half of the total settlement (approximately 0.75 to 1.5-inch).

Alameda Unified School District
Page 4 of 4

October 24, 2017

Based on procedures outlined by Idriss and Boulanger, 2014, the discontinuous and relatively thin layers of potentially liquefiable soil observed 21-feet to 52-feet below the ground surface in the CPT's may experience 0.5-inch to 1.0-inch of post-liquefaction settlement. However, because there is a significant non-liquefiable soil "cap" overlying these deeper potentially liquefiable soil layers, we utilized the procedures outlined by Youd and Garris (1995) to determine if post-liquefaction settlement will be manifested in the form of ground surface settlement. As shown on Figure 10, based on the relative thicknesses of the non-liquefiable "cap" and the liquefiable layers, post-liquefaction settlements are not expected to result in ground surface settlement from the potentially liquefiable layers located below a depth of 21-feet.

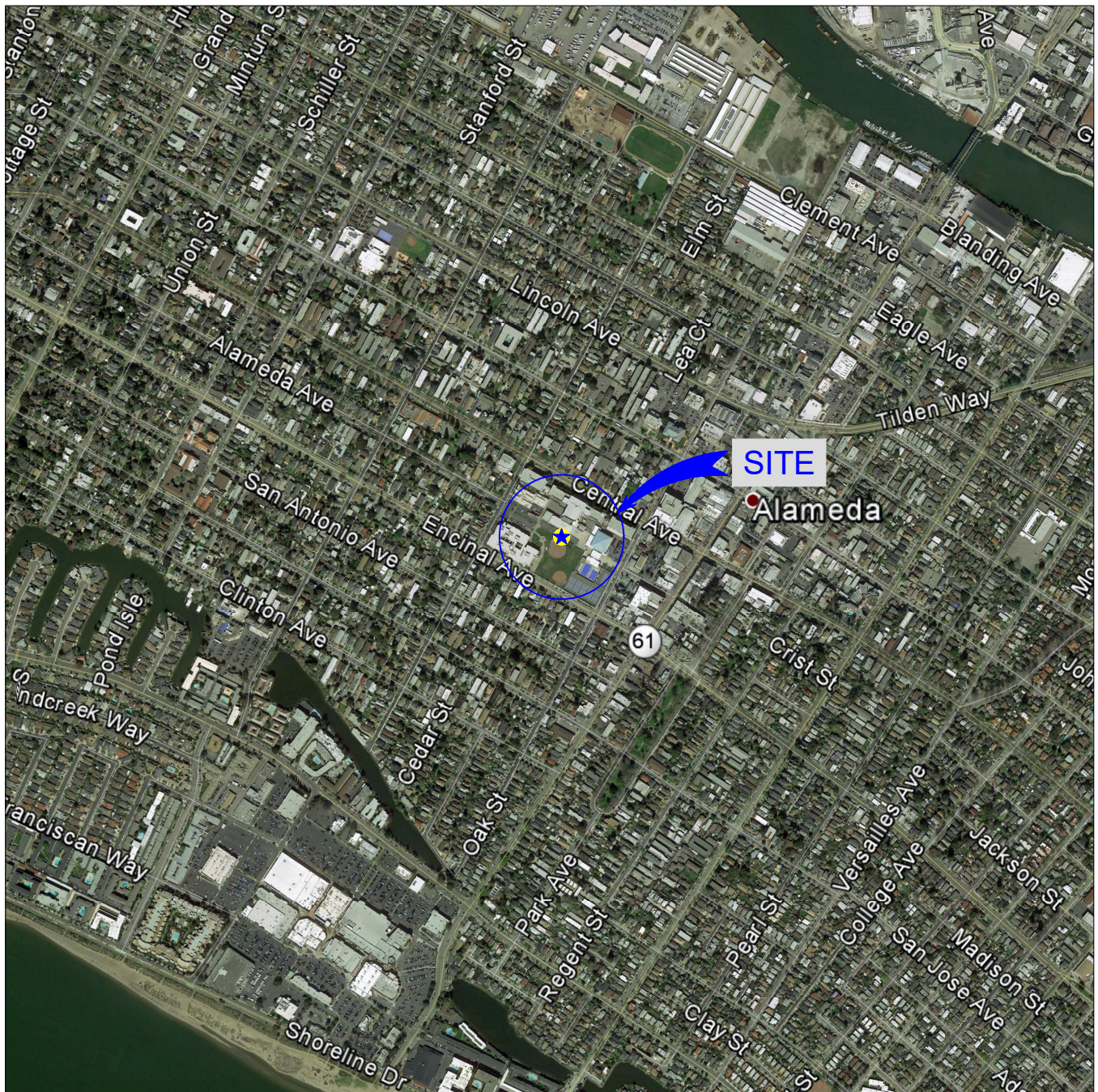
If you have any questions, or if we can be of further assistance, please call us at your convenience.

Yours very truly,
MILLER PACIFIC ENGINEERING GROUP



Daniel S. Caldwell
Geotechnical Engineer #2006
(Expires 9/30/19)

Attachments: Figures 1 through 10, A-1 through A-7



SITE: LATITUDE, 37.7647°
LONGITUDE, -122.2466°

SITE LOCATION
N.T.S.



REFERENCE: Google Earth, 2017



A CALIFORNIA CORPORATION, © 2017, ALL RIGHTS RESERVED
FILENAME: 1911.038 Figures.dwg

504 Redwood Blvd.
Suite 220
Novato, CA 94947
T 415 / 382-3444
F 415 / 382-3450
www.millerpac.com

SITE LOCATION MAP

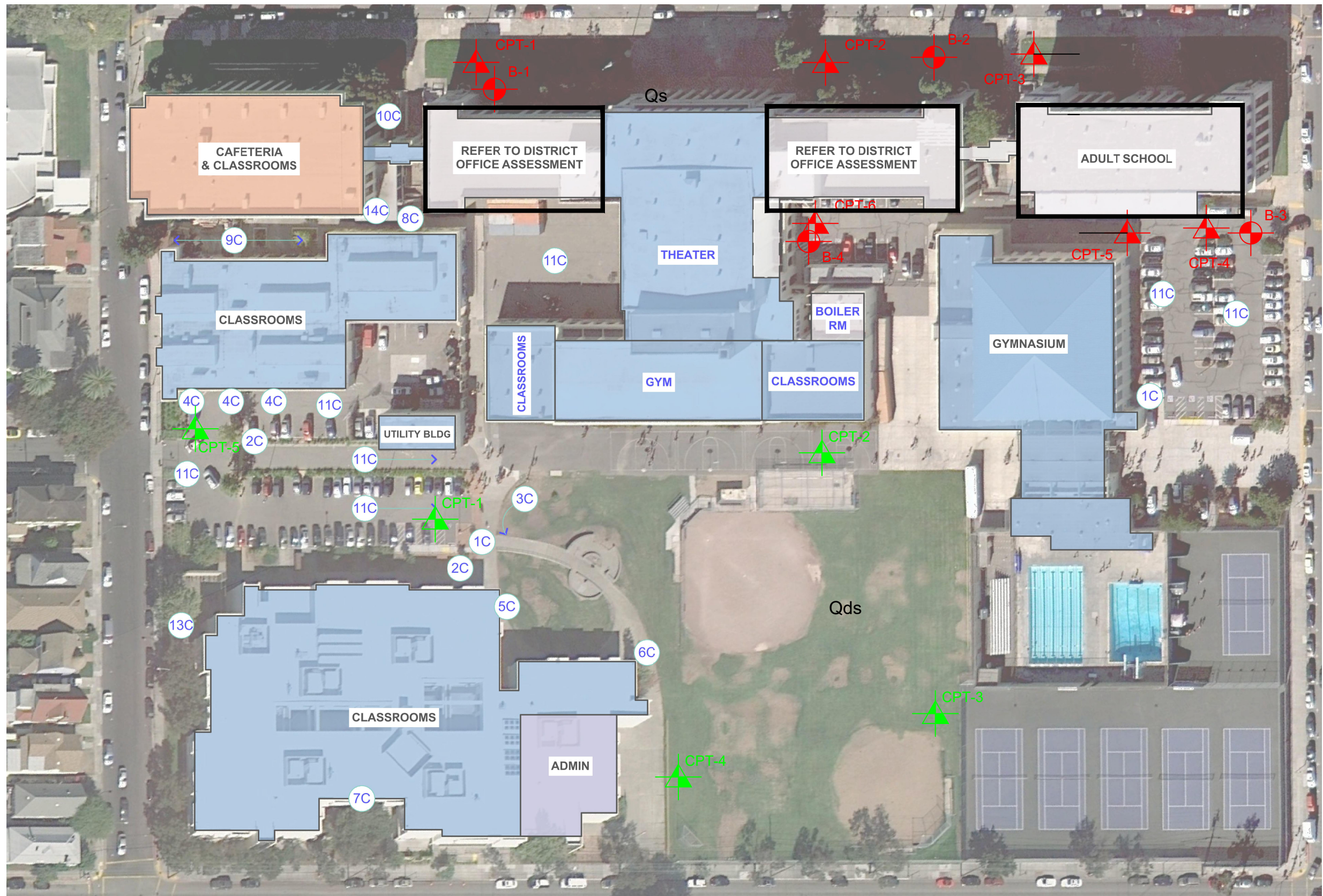
Alameda High School
2201 Encinal Avenue
Alameda, California

Project No. 1911.038

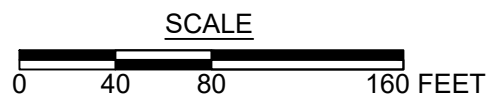
Date: 6/22/2017


Drawn _____
MMT
Checked _____

1
FIGURE



 MPEG CPT LOCATION, MAY 2014
  MPEG BORING LOCATION, MAY 2014
 MPEG CPT LOCATION, MAY 2017
 REFERENCE: Site Plan Provided by QKA




MILLER PACIFIC
ENGINEERING GROUP
A CALIFORNIA CORPORATION, © 2013, ALL RIGHTS RESERVED
 FILE: 1911.038 SP.dwg

504 Redwood Blvd.
 Suite 220
 Novato, CA 94947
 T 415 / 382-3444
 F 415 / 382-3450
 www.millerpac.com

SITE PLAN

Alameda High School
 2201 Encinal Avenue
 Alameda, California

Project No. 1911.038 Date: 6/22/2017

Designed DSC
 Drawn MMT
 Checked _____

2
 FIGURE



REGIONAL GEOLOGIC MAP (NOT TO SCALE)



LEGEND

- af** ARTIFICIAL FILL (HOLOCENE)
Man made deposit of various materials and ages. Some are compacted and quite firm, but fills made before 1865 are nearly everywhere not compacted and consist simply of dumped materials.
- Qds** DUNE SAND (HOLOCENE AND PLEISTOCENE)
Fine-grained, very well sorted, well-drained, eolian deposits. They occur mainly in large sheets, as well as many small hills, most displaying Barchan morphology. Dunes display as much as 30 m of erosional relief and are presently being buried by basin deposits (Qhb) and bay mud (Qhbm). They probably began accumulating after the last interglacial high stand of sea level began to recede about 71 ka, continued to form when sea level dropped to its Wisconsin minimum about 18 ka, and probably ceased to accumulate after sea level reached its present elevation (about 6 ka). Atwater (1982) recognized buried paleosols in the dunes, indicating periods of nondeposition

REFERENCE: Graymer, R.W. (2000), "Geologic Map of the Oakland Metropolitan Area, Alameda, Contra Costa, and San Francisco Counties, California", United States Geological Survey Miscellaneous Field Studies Map MF-2342, Version 1.0, Map Scale 1:50,000.



**MILLER PACIFIC
ENGINEERING GROUP**

A CALIFORNIA CORPORATION, © 2017, ALL RIGHTS RESERVED
FILENAME: 1911.038 Figures.dwg

504 Redwood Blvd.
Suite 220
Novato, CA 94947
T 415 / 382-3444
F 415 / 382-3450
www.millerpac.com

REGIONAL GEOLOGIC MAP

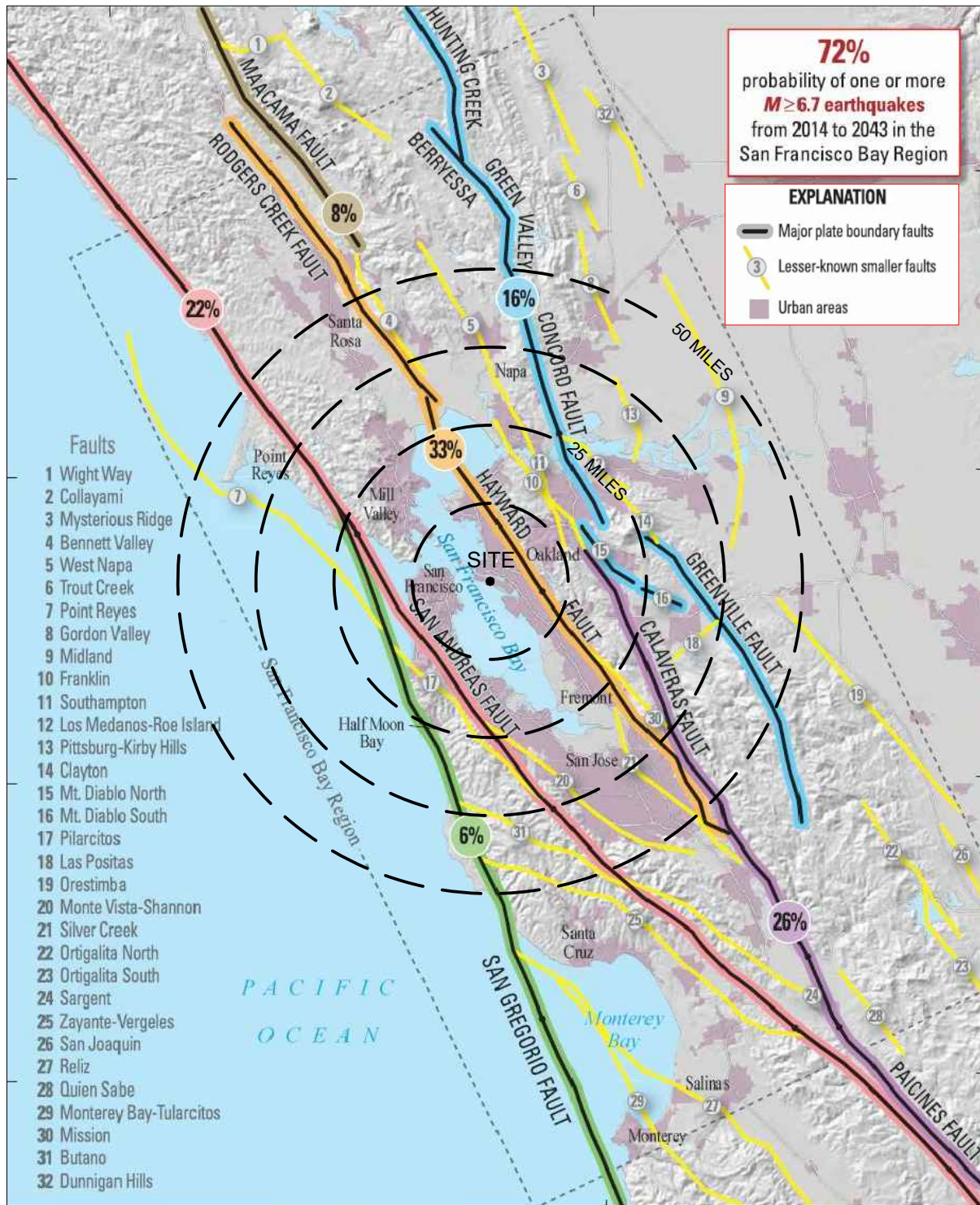
Alameda High School
2201 Encinal Avenue
Alameda, California

Project No. 1911.038

Date: 6/22/2017

Drawn _____
MMT
Checked _____

3
FIGURE



SITE COORDINATES

LAT. 37.7647°

LON. -122.2466°

SCALE

0 12.5 25 50 MILES



DATA SOURCE:

1) U.S. Geological Survey, U.S. Department of the Interior, "Earthquake Outlook for the San Francisco Bay Region 2014-2043", Map of Known Active Faults in the San Francisco Bay Region, Fact Sheet 2016-3020, Revised August 2016 (ver. 1.1).



MILLER PACIFIC
ENGINEERING GROUP

A CALIFORNIA CORPORATION, © 2017, ALL RIGHTS RESERVED
FILENAME: 1911.038 Figures.dwg

504 Redwood Blvd.

Suite 220

Novato, CA 94947

T 415 / 382-3444

F 415 / 382-3450

www.millerpac.com

ACTIVE FAULT MAP

Alameda High School
2201 Encinal Avenue
Alameda, California

Project No. 1911.038

Date: 6/22/2017

Drawn MMT
Checked

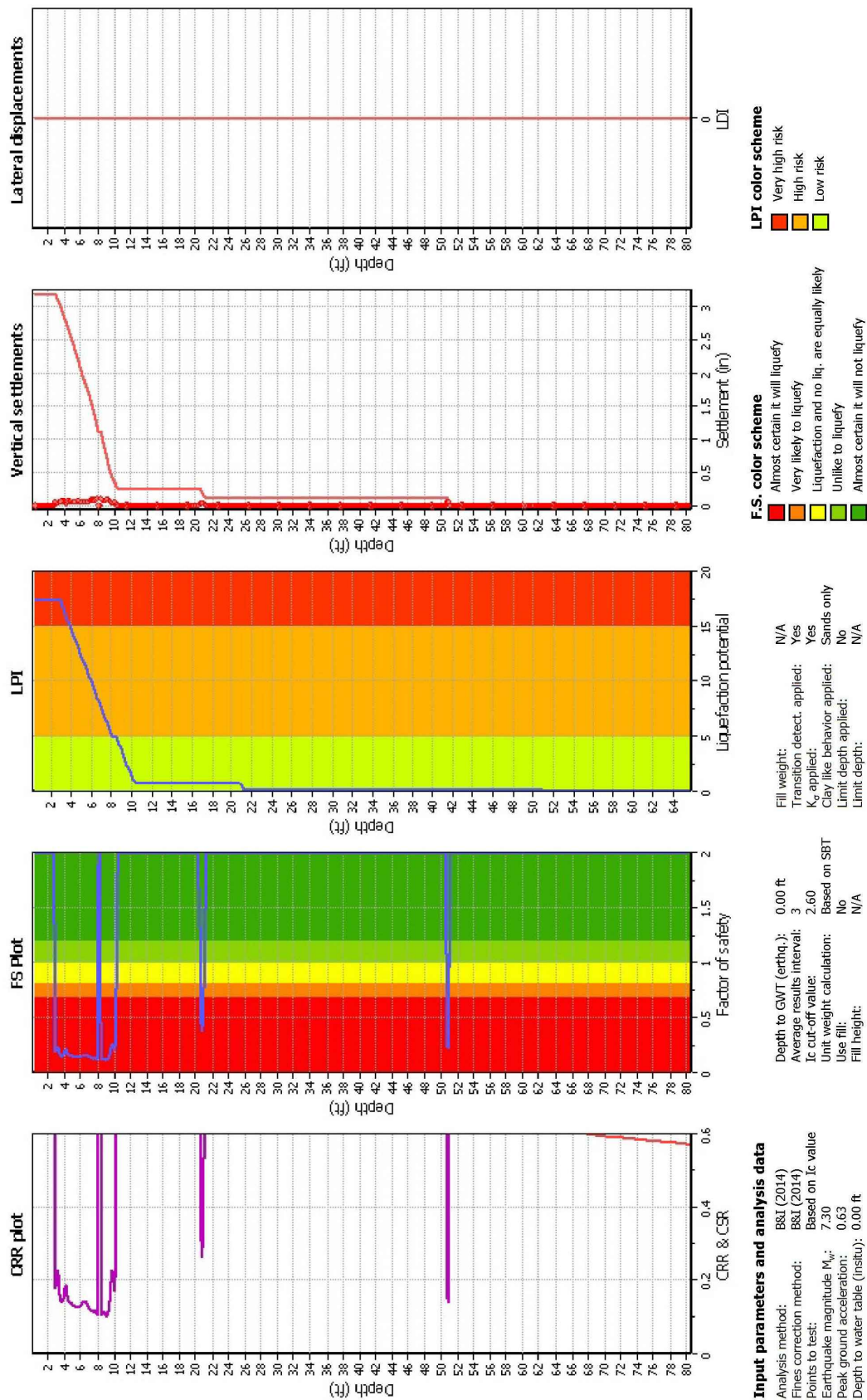
4

FIGURE

This software is licensed to: Miller Pacific Engineering Group

CPT name: CPT-01

Liquefaction analysis overall plot



CLiq v2.1.6.9 - CPT Liquefaction Assessment Software - Report created on: 7/6/2017, 11:22:48 AM
Project file: H:\Jobs\1900-1999\1911.038 Alameda High School Liquefaction Eval\Analyses\1911.038 CPTLiq.dq



MILLER PACIFIC
ENGINEERING GROUP

A CALIFORNIA CORPORATION, © 2017, ALL RIGHTS RESERVED
FILENAME: 1911.038 Figures.dwg

504 Redwood Blvd.
Suite 220
Novato, CA 94947
T 415 / 382-3444
F 415 / 382-3450
www.millerpac.com

CPT-1 LIQUEFACTION ANALYSIS

Alameda High School
2201 Encinal Avenue
Alameda, California

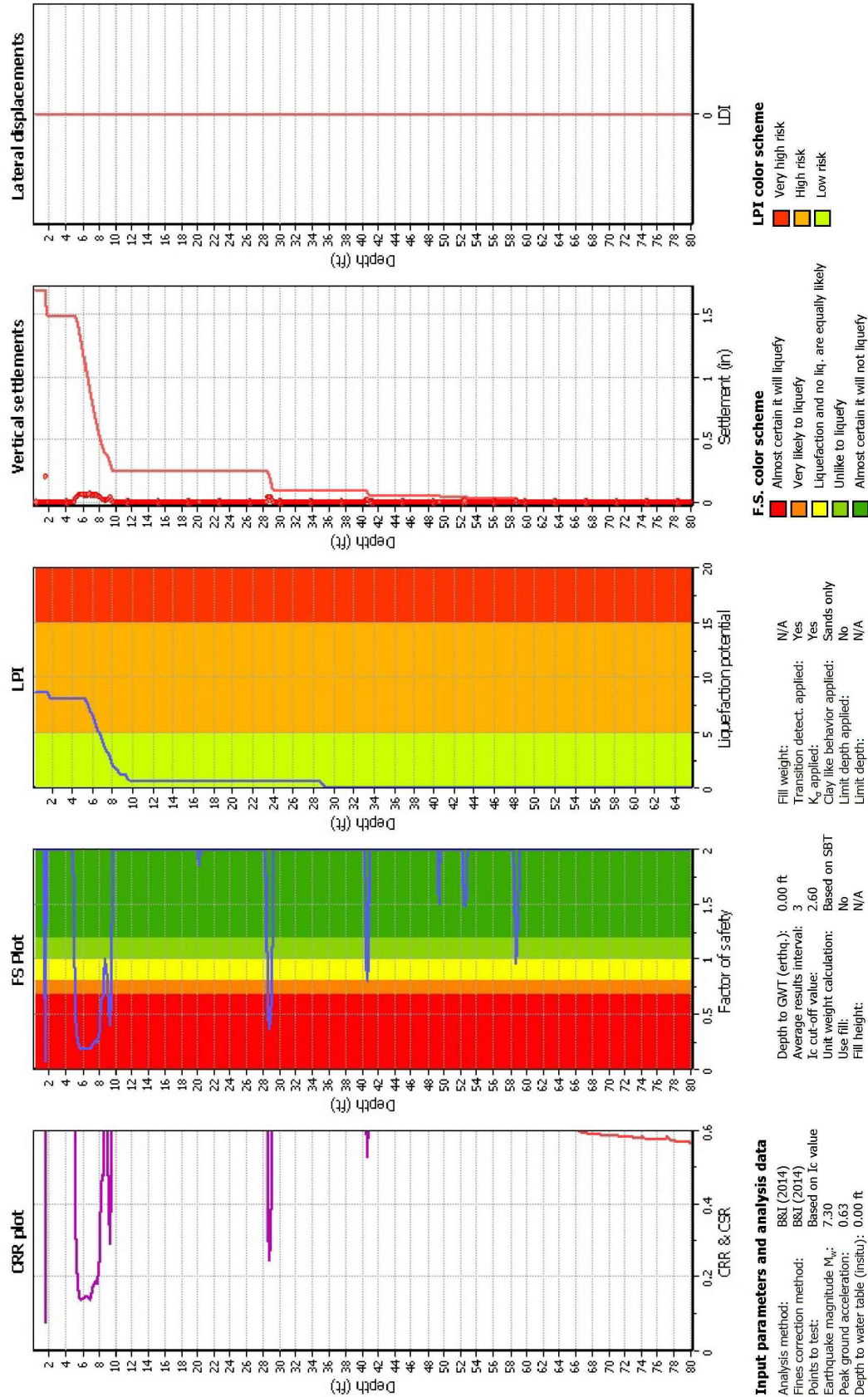
Project No. 1911.038

Date: 6/22/2017

Drawn: MMT
Checked:

5
FIGURE

Liquefaction analysis overall plot



A CALIFORNIA CORPORATION, © 2017, ALL RIGHTS RESERVED
 FILENAME: 1911.038 Figures.dwg

504 Redwood Blvd.
 Suite 220
 Novato, CA 94947
 T 415 / 382-3444
 F 415 / 382-3450
 www.millerpac.com

CPT-2 LIQUEFACTION ANALYSIS

Alameda High School
 2201 Encinal Avenue
 Alameda, California

Project No. 1911.038

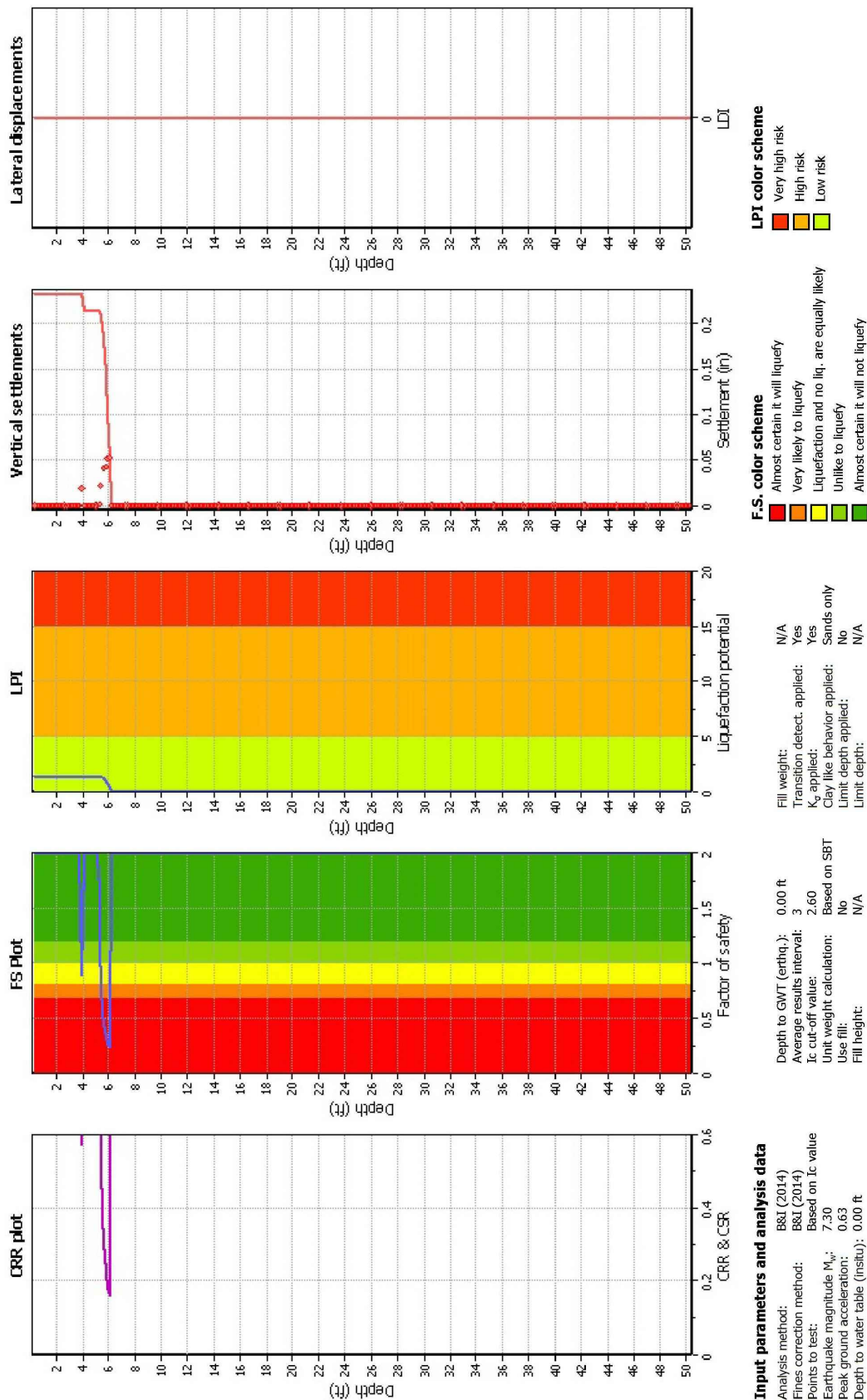
Date: 6/22/2017

Drawn: MMT
 Checked:

6

FIGURE

Liquefaction analysis overall plot



MILLER PACIFIC
ENGINEERING GROUP

A CALIFORNIA CORPORATION, © 2017, ALL RIGHTS RESERVED
FILENAME: 1911.038 Figures.dwg

504 Redwood Blvd.
Suite 220
Novato, CA 94947
T 415 / 382-3444
F 415 / 382-3450
www.millerpac.com

CPT-3 LIQUEFACTION ANALYSIS

Alameda High School
2201 Encinal Avenue
Alameda, California

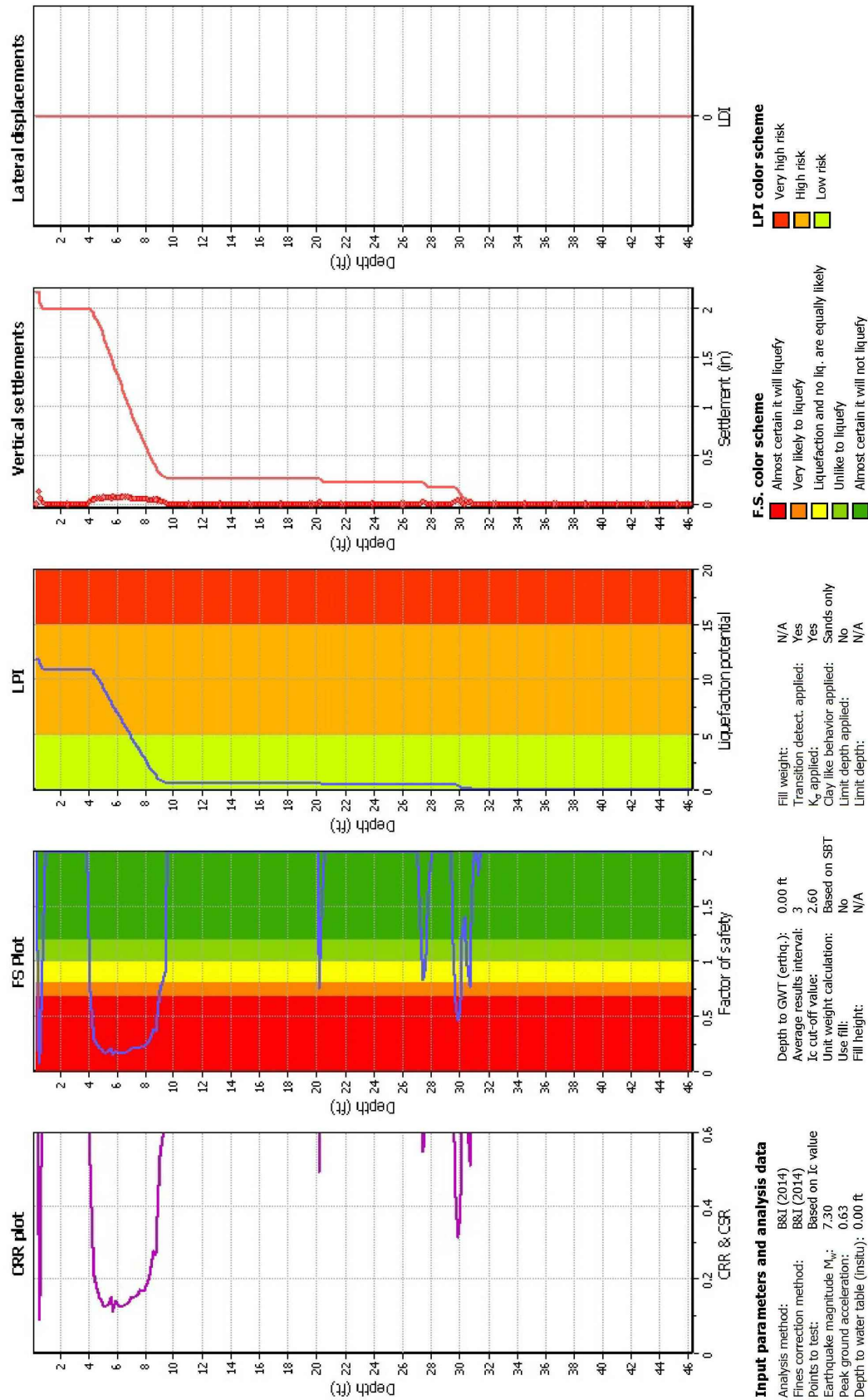
Project No. 1911.038

Date: 6/22/2017

Drawn: MMT
Checked:

7
FIGURE

Liquefaction analysis overall plot



Clq v.2.1.6.9 - CPT Liquefaction Assessment Software - Report created on: 7/6/2017, 11:22:51 AM
 Project file: H:\Jobs\1900-1999\1911.038 Alameda High School Liquefaction Eval\Analyses\1911.038 CPT\lq.cq



MILLER PACIFIC
ENGINEERING GROUP

A CALIFORNIA CORPORATION, © 2017, ALL RIGHTS RESERVED
 FILENAME: 1911.038 Figures.dwg

504 Redwood Blvd.
 Suite 220
 Novato, CA 94947
 T 415 / 382-3444
 F 415 / 382-3450
 www.millerpac.com

CPT-4 LIQUEFACTION ANALYSIS

Alameda High School
 2201 Encinal Avenue
 Alameda, California

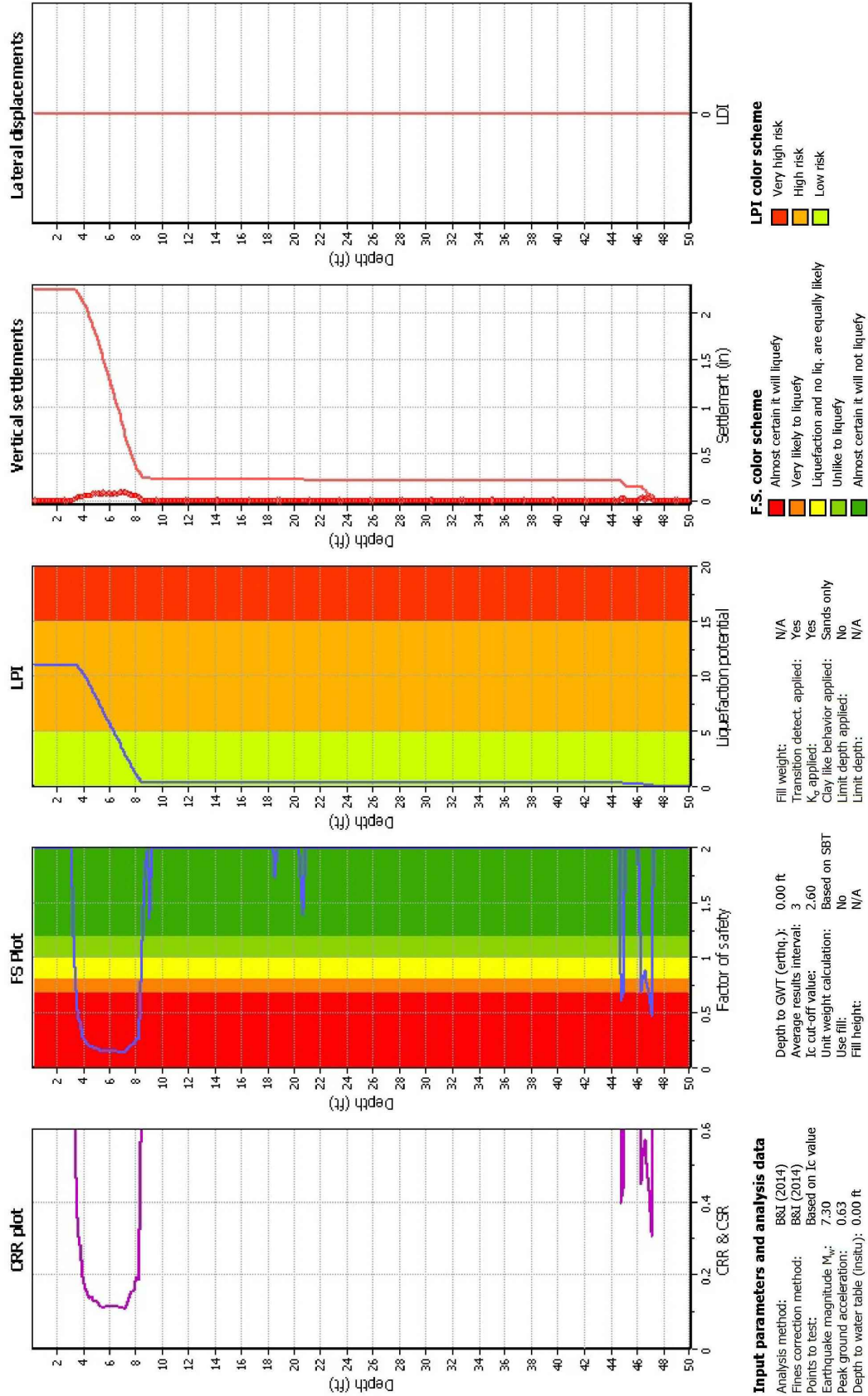
Project No. 1911.038

Date: 6/22/2017

Drawn
 MMT
 Checked

8
FIGURE

Liquefaction analysis overall plot



MILLER PACIFIC
ENGINEERING GROUP

A CALIFORNIA CORPORATION, © 2017, ALL RIGHTS RESERVED
 FILENAME: 1911.038 Figures.dwg

504 Redwood Blvd.

Suite 220

Novato, CA 94947

T 415 / 382-3444

F 415 / 382-3450

www.millerpac.com

CPT-5 LIQUEFACTION ANALYSIS

Alameda High School
 2201 Encinal Avenue
 Alameda, California

Project No. 1911.038

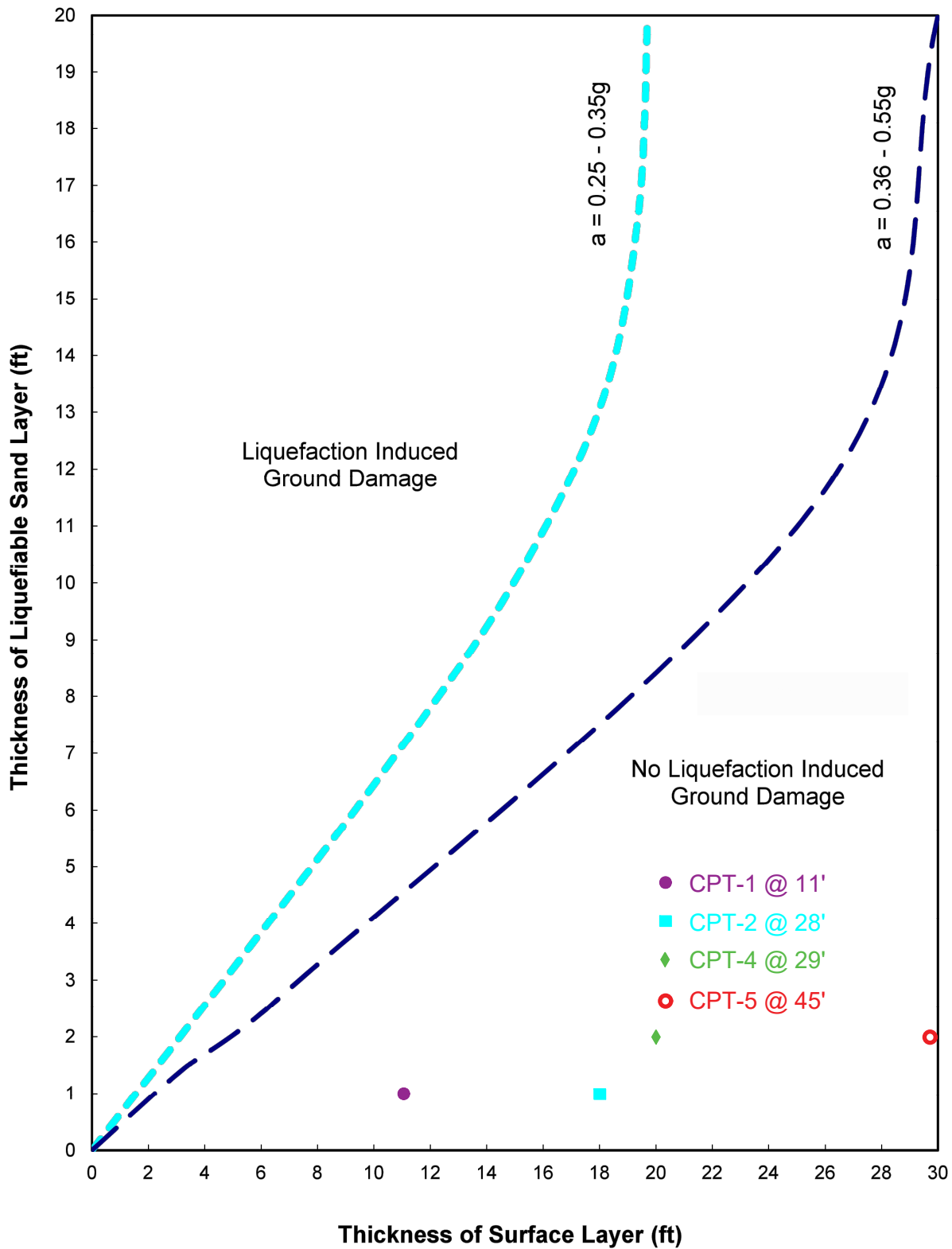
Date: 6/22/2017

Drawn: MMT
 Checked:

9

FIGURE

Liquefaction-Induced Ground-Surface Distribution
(Youd and Garriss, 1995)



MILLER PACIFIC
ENGINEERING GROUP

A CALIFORNIA CORPORATION, © 2017, ALL RIGHTS RESERVED
FILENAME: 1911.038 Figures.dwg

504 Redwood Blvd.
Suite 220
Novato, CA 94947
T 415 / 382-3444
F 415 / 382-3450
www.millerpac.com

LIQUEFACTION ANALYSIS - SURFACE EFFECTS

Alameda High School
2201 Encinal Avenue
Alameda, California

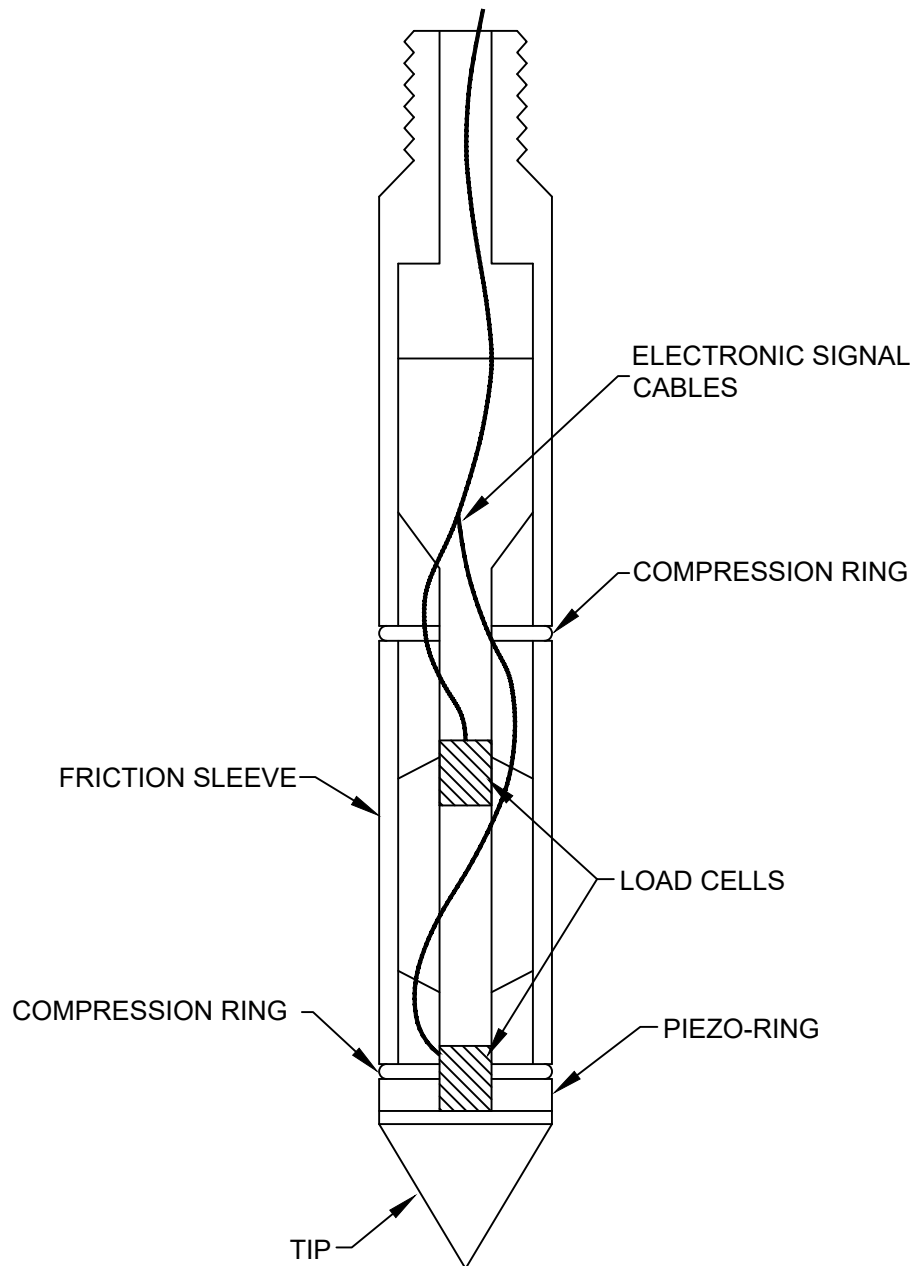
Project No. 1911.038

Date: 6/22/2017

Drawn _____
Checked MMT

10
FIGURE

APPENDIX A



CONE PENETROMETER

(NO SCALE)



MILLER PACIFIC
ENGINEERING GROUP

A CALIFORNIA CORPORATION, © 2017, ALL RIGHTS RESERVED
FILENAME: 1911.038 CPT.dwg

504 Redwood Blvd.
Suite 220
Novato, CA 94947
T 415 / 382-3444
F 415 / 382-3450
www.millerpac.com

CONE PENETROMETER

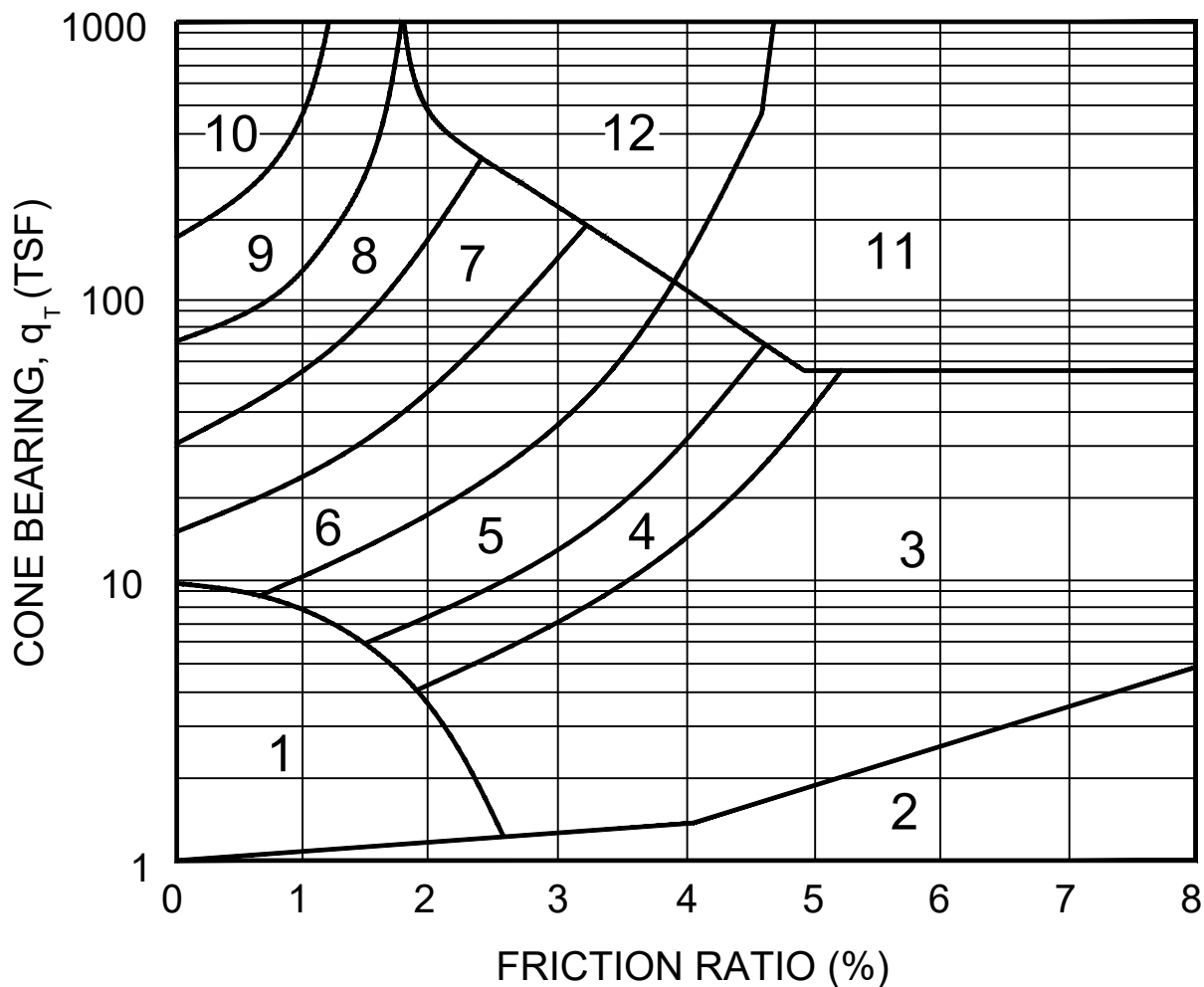
Alameda High School
2201 Encinal Avenue
Alameda, California

Project No. 1911.038

Date: 6/22/2017

Drawn _____
Checked MMT

A-1
FIGURE



Zone:	Qc/N	Soil Behavior Type:
1)	2	Sensitive Fine Grained
2)	1	Organic Material
3)	1	Clay
4)	1.5	Silty Clay to Clay
5)	2	Clayey Silt to Silty Clay
6)	2.5	Sandy Silt to Clayey Silt
7)	3	Silty Sand to Sandy Silt
8)	4	Sand to Silty Sand
9)	5	Sand
10)	6	Gravelly Sand to Sand
11)	1	Very Stiff Fine Grained (*)
12)	2	Sand to Clayey Sand (*)

(*) Overconsolidated or Cemented

Reference: Robertson, P.K. (1986), "In-Situ Testing and Its Application to Geotechnical Engineering," Canadian Geotechnical Journal, Vol. 23; No. 23; No. 4, pp. 573-594



MILLER PACIFIC
ENGINEERING GROUP

A CALIFORNIA CORPORATION, © 2017, ALL RIGHTS RESERVED
FILENAME: 1911.038 CPT.dwg

504 Redwood Blvd.
Suite 220
Novato, CA 94947
T 415 / 382-3444
F 415 / 382-3450
www.millerpac.com

CPT SOIL INTERPRETATION CHART

Alameda High School
2201 Encinal Avenue
Alameda, California

Project No. 1911.038

Date: 6/22/2017

Drawn _____
Checked MMT

A-2
FIGURE

Miller Pacific Engineering



Project
Job Number
Hole Number
EST GW Depth During Test

Alameda High School
1911.038
CPT-01

Operator
Cone Number
Date and Time

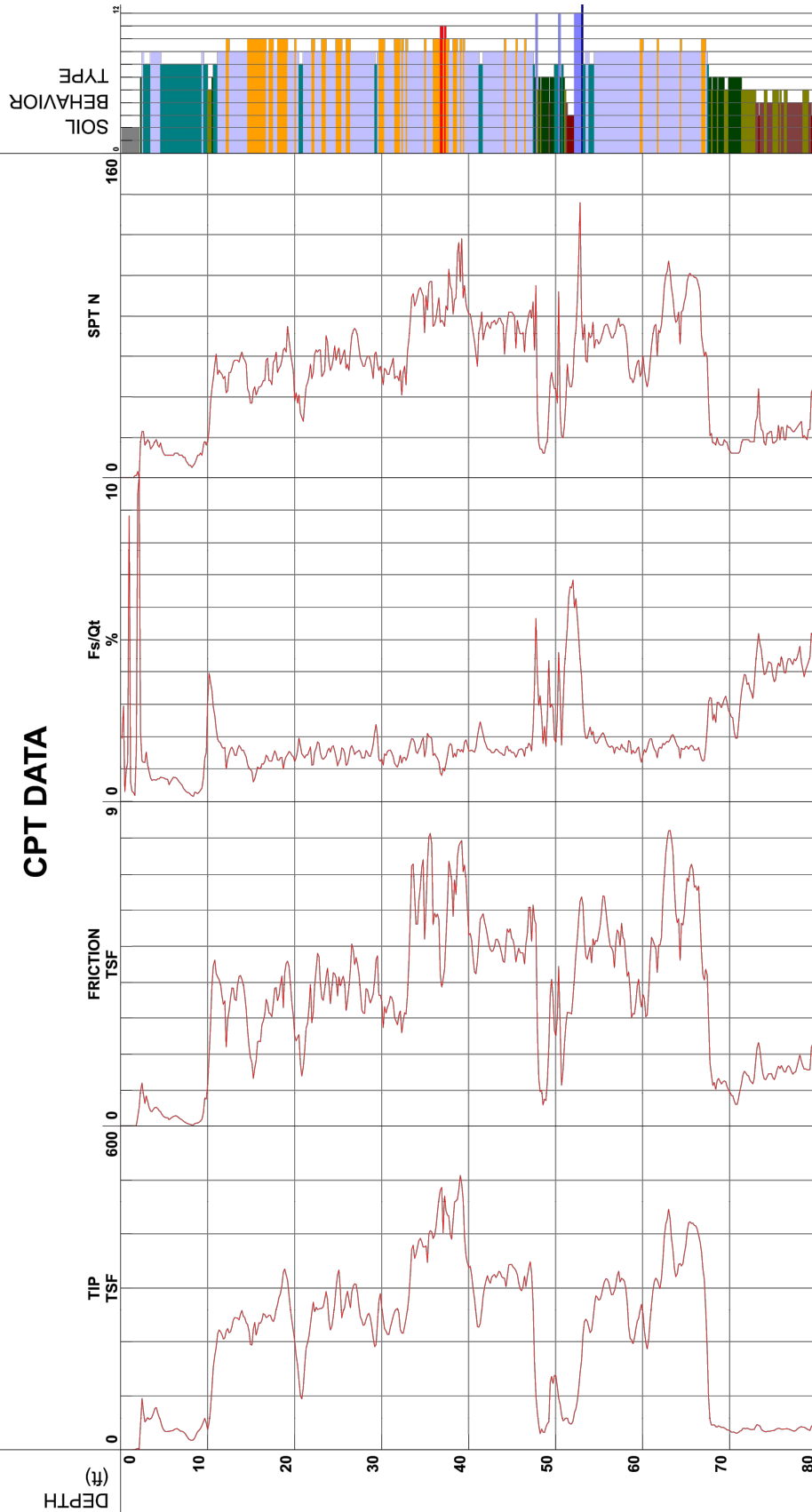
RB KK
DDG1281
5/23/2017 7:41:57 AM

Filename
GPS
Maximum Depth

SDF(001).cpt
80.54 ft

Net Area Ratio .8

CPT DATA



- 1 - sensitive fine grained
- 2 - organic material
- 3 - clay
- 4 - silty clay to clay
- 5 - clayey silt to silty clay
- 6 - sandy silt to clayey silt
- 7 - silty sand to sandy silt
- 8 - sand to silty sand
- 9 - sand
- 10 - gravelly sand to sand
- 11 - very stiff fine grained (*)
- 12 - sand to clayey sand (*)

*Soil behavior type and SPT based on data from UBC-1983

Cone Size 10cm squared



MILLER PACIFIC
ENGINEERING GROUP

A CALIFORNIA CORPORATION, © 2017, ALL RIGHTS RESERVED
FILENAME: 1911.038 CPT.dwg

504 Redwood Blvd.
Suite 220
Novato, CA 94947
T 415 / 382-3444
F 415 / 382-3450
www.millerpac.com

CPT-1 PLOT

Alameda High School
2201 Encinal Avenue
Alameda, California

Project No. 1911.038

Date: 6/22/2017

Drawn MMT
Checked

A-3
FIGURE



Miller Pacific Engineering

Project
Job Number
Hole Number
EST GW Depth During Test

Alameda High School
1911.038
CPT-02

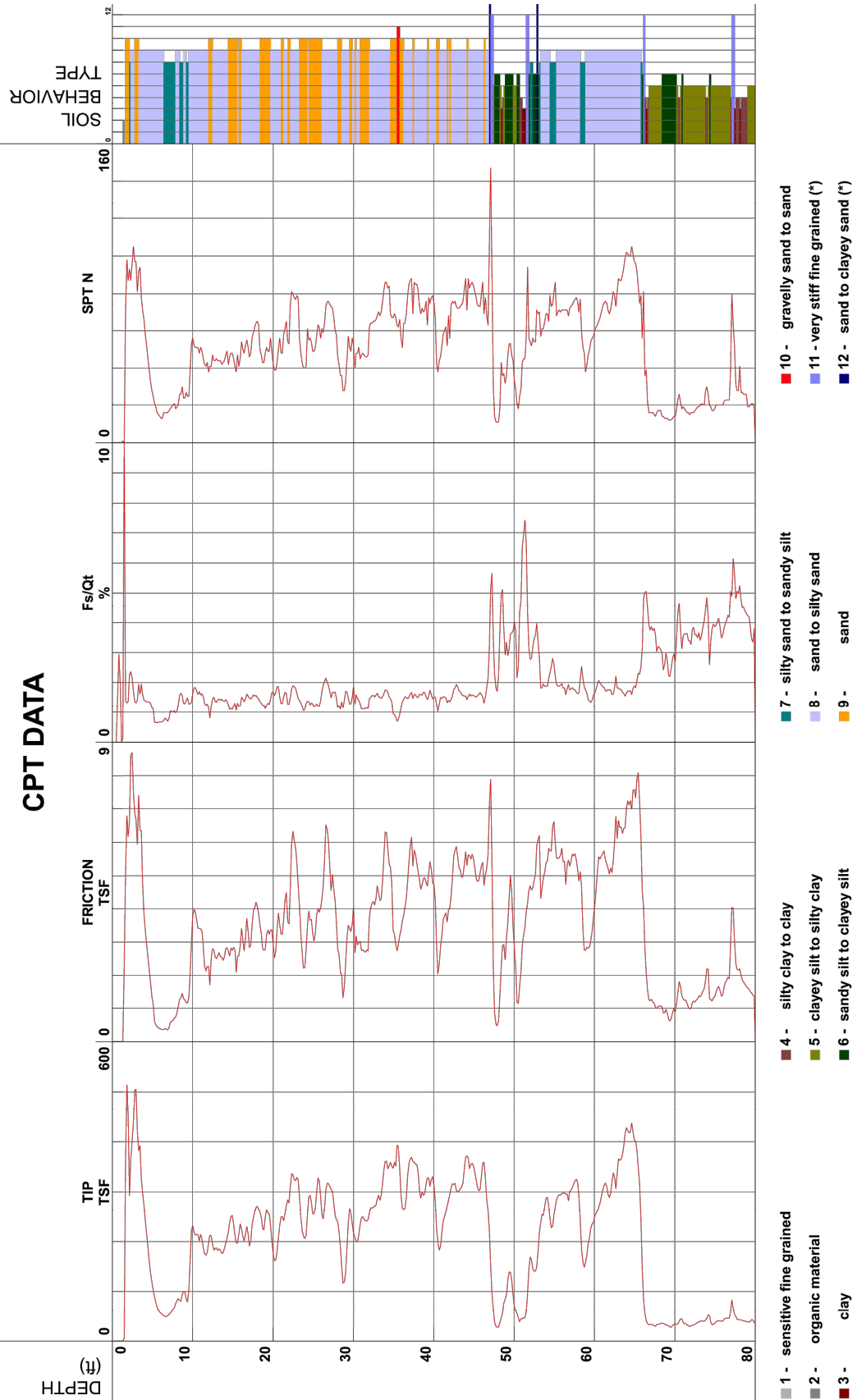
Operator
Cone Number
Date and Time
8.50 ft

Filename
GPS
Maximum Depth

SDF(002).cpt
80.22 ft

Net Area Ratio .8

CPT DATA



MILLER PACIFIC
ENGINEERING GROUP

A CALIFORNIA CORPORATION, © 2017, ALL RIGHTS RESERVED
FILENAME: 1911.038 CPT.dwg

504 Redwood Blvd.
Suite 220
Novato, CA 94947
T 415 / 382-3444
F 415 / 382-3450
www.millerpac.com

CPT-2 PLOT

Alameda High School
2201 Encinal Avenue
Alameda, California

Project No. 1911.038

Date: 6/22/2017

Drawn
Checked

MMT

A-4
FIGURE

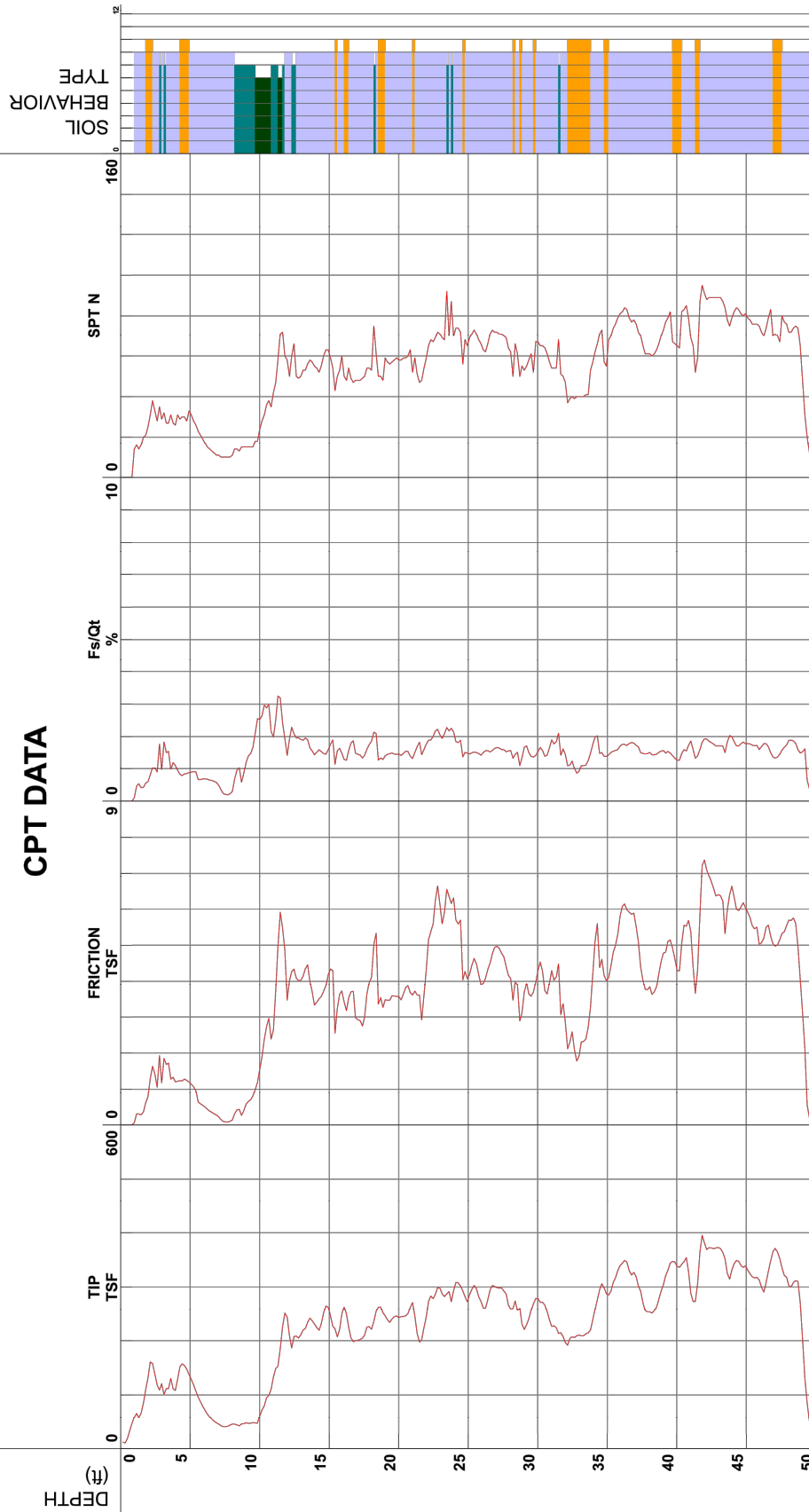
Miller Pacific Engineering



Project	Alameda High School	Operator	RB KK	Filename	SDF(003).cpt
Job Number	1911.038	Cone Number	DDG1281	GPS	
Hole Number	CPT-03	Date and Time	5/23/2017 10:54:13 AM	Maximum Depth	50.52 ft
EST GW Depth During Test	8.50 ft				

Net Area Ratio .8

CPT DATA



- 1 - sensitive fine grained
- 2 - organic material
- 3 - clay
- 4 - silty clay to clay
- 5 - clayey silt to silty clay
- 6 - sandy silt to clayey silt
- 7 - silty sand to sandy silt
- 8 - sand to silty sand
- 9 - sand
- 10 - gravelly sand to sand
- 11 - very stiff fine grained (*)
- 12 - sand to clayey sand (*)

S*Soil behavior type and SPT based on data from UBC-1983

Cone Size 10cm squared

CPT-3 PLOT

Alameda High School
2201 Encinal Avenue
Alameda, California

Project No. 1911.038

Date: 6/22/2017

Drawn MMT
Checked

A-5
FIGURE



A CALIFORNIA CORPORATION, © 2017, ALL RIGHTS RESERVED
FILENAME: 1911.038 CPT.dwg

504 Redwood Blvd.
Suite 220
Novato, CA 94947
T 415 / 382-3444
F 415 / 382-3450
www.millerpac.com



Miller Pacific Engineering

Project
Job Number
Hole Number
EST GW Depth During Test

Alameda High School
1911.038
CPT-04

Operator
Cone Number
Date and Time
8.50 ft

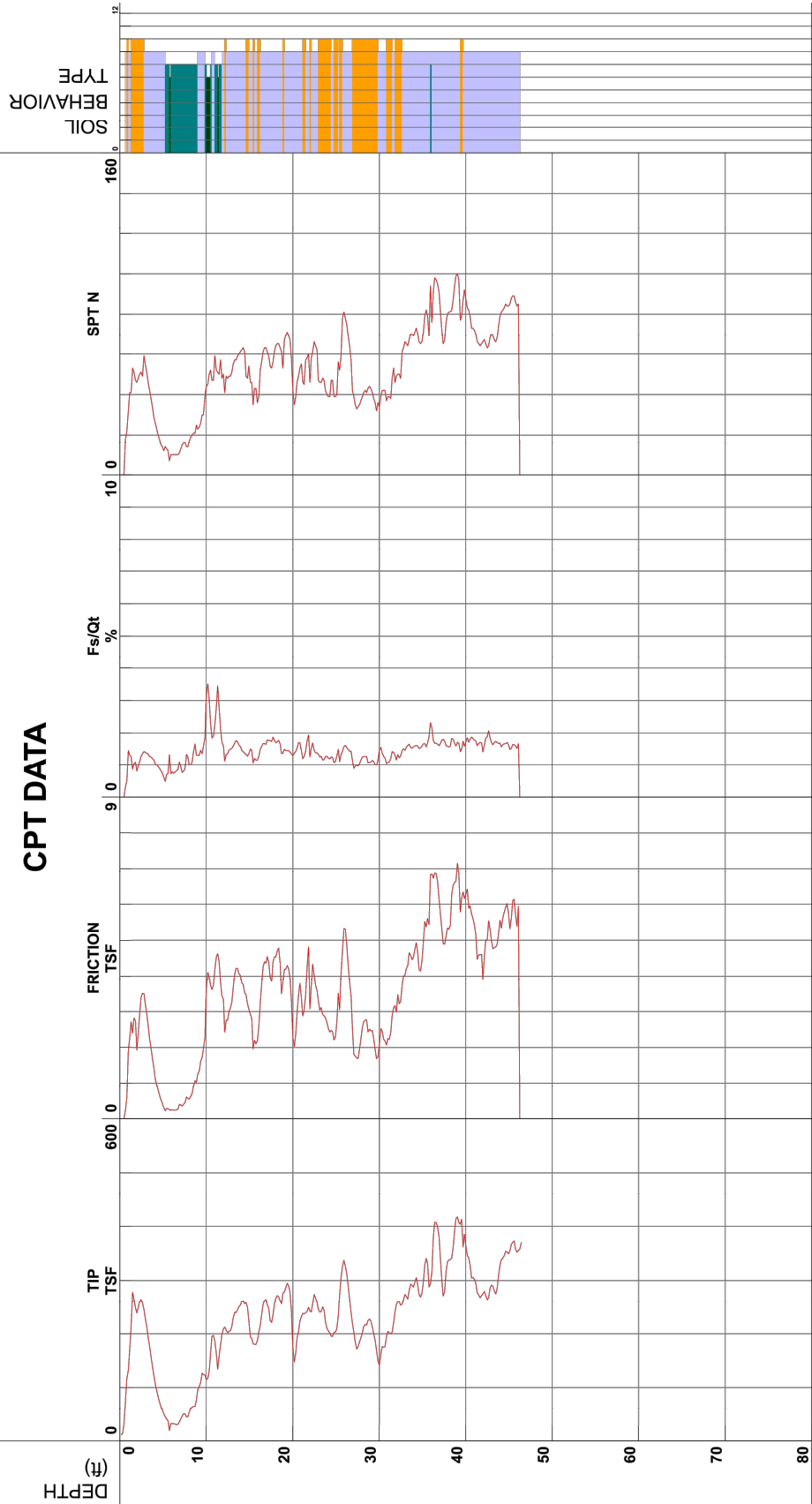
RB KK
DDG1281
5/23/2017 11:33:59 AM

Filename
GPS
Maximum Depth

SDF(004).cpt
46.42 ft

Net Area Ratio .8

CPT DATA



- 1 - sensitive fine grained
- 2 - organic material
- 3 - clay
- 4 - silty clay to clay
- 5 - clayey silt to silty clay
- 6 - sandy silt to clayey silt
- 7 - silty sand to sandy silt
- 8 - sand to silty sand
- 9 - sand
- 10 - gravelly sand to sand
- 11 - very stiff fine grained (*)
- 12 - sand to clayey sand (*)

Cone Size 10cm squared

S^oSoil behavior type and SPT based on data from UBC-1983



MILLER PACIFIC
ENGINEERING GROUP

A CALIFORNIA CORPORATION, © 2017, ALL RIGHTS RESERVED
FILENAME: 1911.038 CPT.dwg

504 Redwood Blvd.
Suite 220
Novato, CA 94947
T 415 / 382-3444
F 415 / 382-3450
www.millerpac.com

CPT-4 PLOT

Alameda High School
2201 Encinal Avenue
Alameda, California

Project No. 1911.038

Date: 6/22/2017

Drawn
Checked

MMT

A-6
FIGURE



Miller Pacific Engineering

Project
Job Number
Hole Number
EST GW Depth During Test

Alameda High School
1911.038
CPT-05

Operator
Cone Number
Date and Time

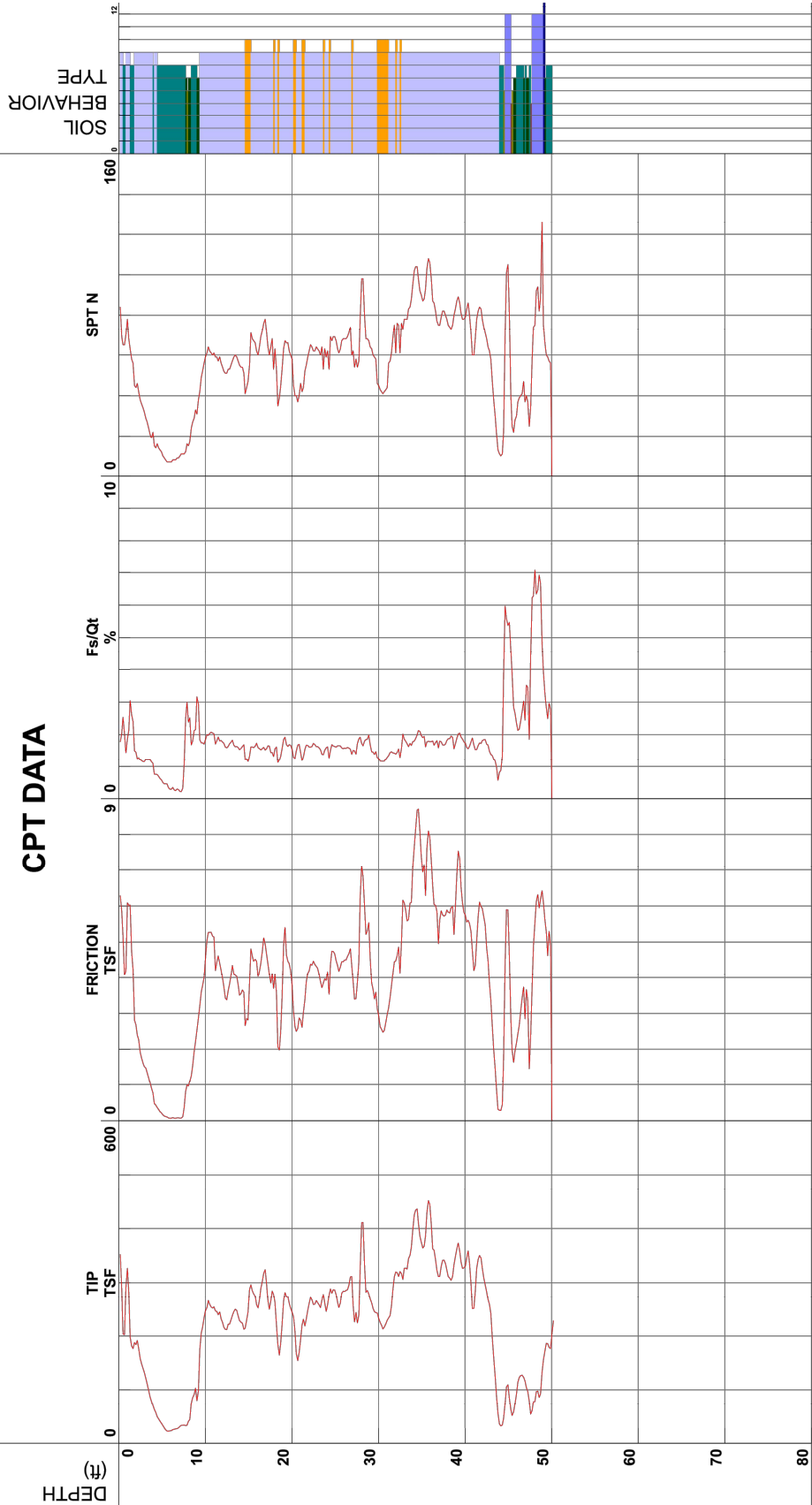
RB KK
DDG1281
5/23/2017 12:20:24 PM

Filename
GPS
Maximum Depth

SDF(005).cpt
50.20 ft

Net Area Ratio .8

CPT DATA



MILLER PACIFIC
ENGINEERING GROUP

A CALIFORNIA CORPORATION, © 2017, ALL RIGHTS RESERVED
FILENAME: 1911.038 CPT.dwg

504 Redwood Blvd.
Suite 220
Novato, CA 94947
T 415 / 382-3444
F 415 / 382-3450
www.millerpac.com

CPT-5 PLOT

Alameda High School
2201 Encinal Avenue
Alameda, California

Project No. 1911.038

Date: 6/22/2017

Drawn
Checked

MMT

A-7
FIGURE