



BUILDING ON SUCCESS - SCHOOLS FOR THE NEXT GENERATION
MEASURE K BOND PROGRAM

New 6-8 Middle School #1 (GTE Site)

August 19, 2010
COC Construction Site Tour

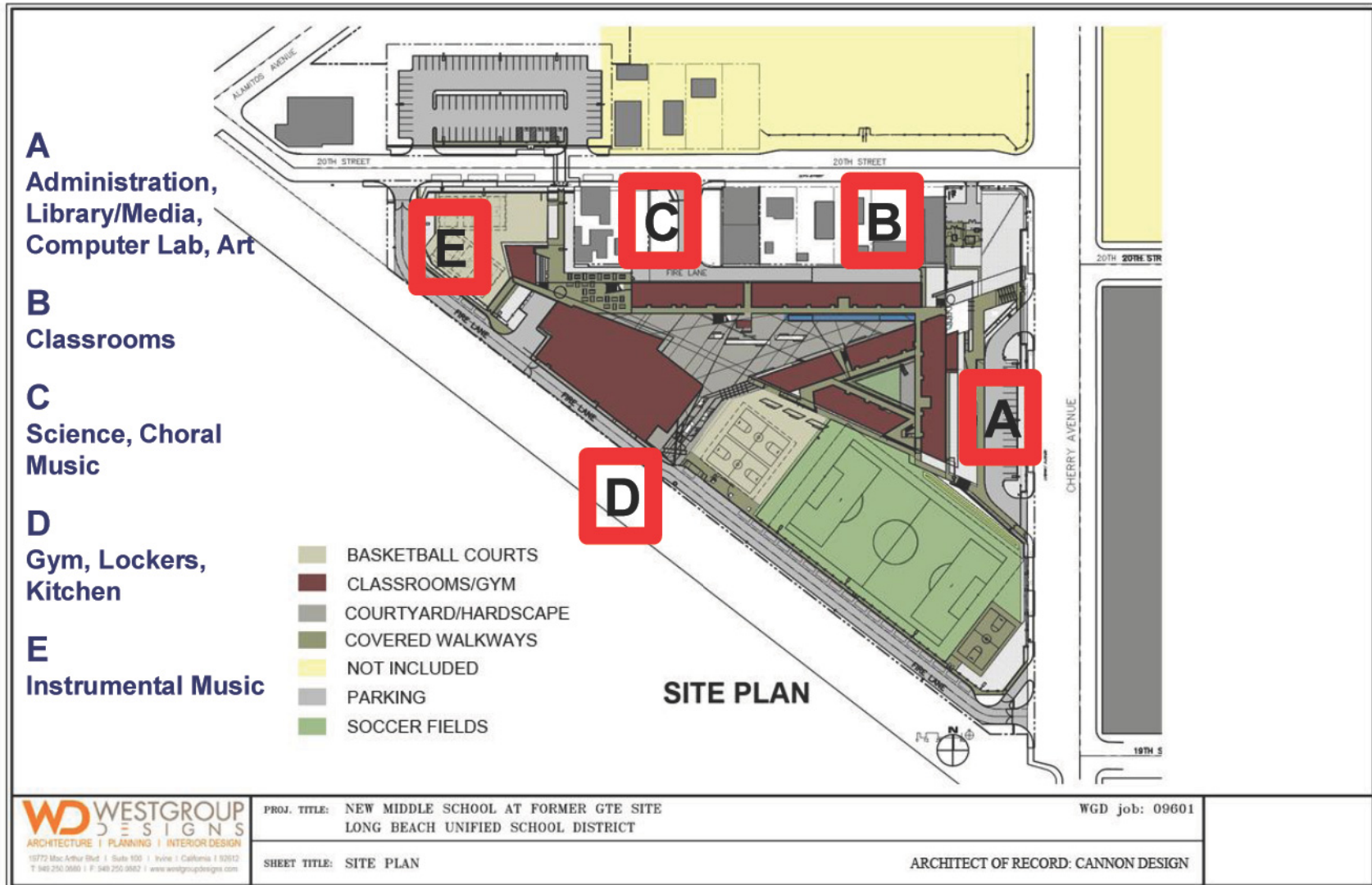
- 6-8 Middle School in the Poly Planning Area
- Site Located at E. 20th Street/Cherry Avenue (8+ acres) – Former GTE Site
- 800 Students (840 capacity)
- 31 Classrooms (89,288 square feet)
- Library/Media Center, Gymnasium, Multipurpose Room, Other Support Facilities including a Soccer Field and Hard Court Areas
- Total Project Cost - \$ 54.4 M
- Expended to Date - \$ 18.9 M



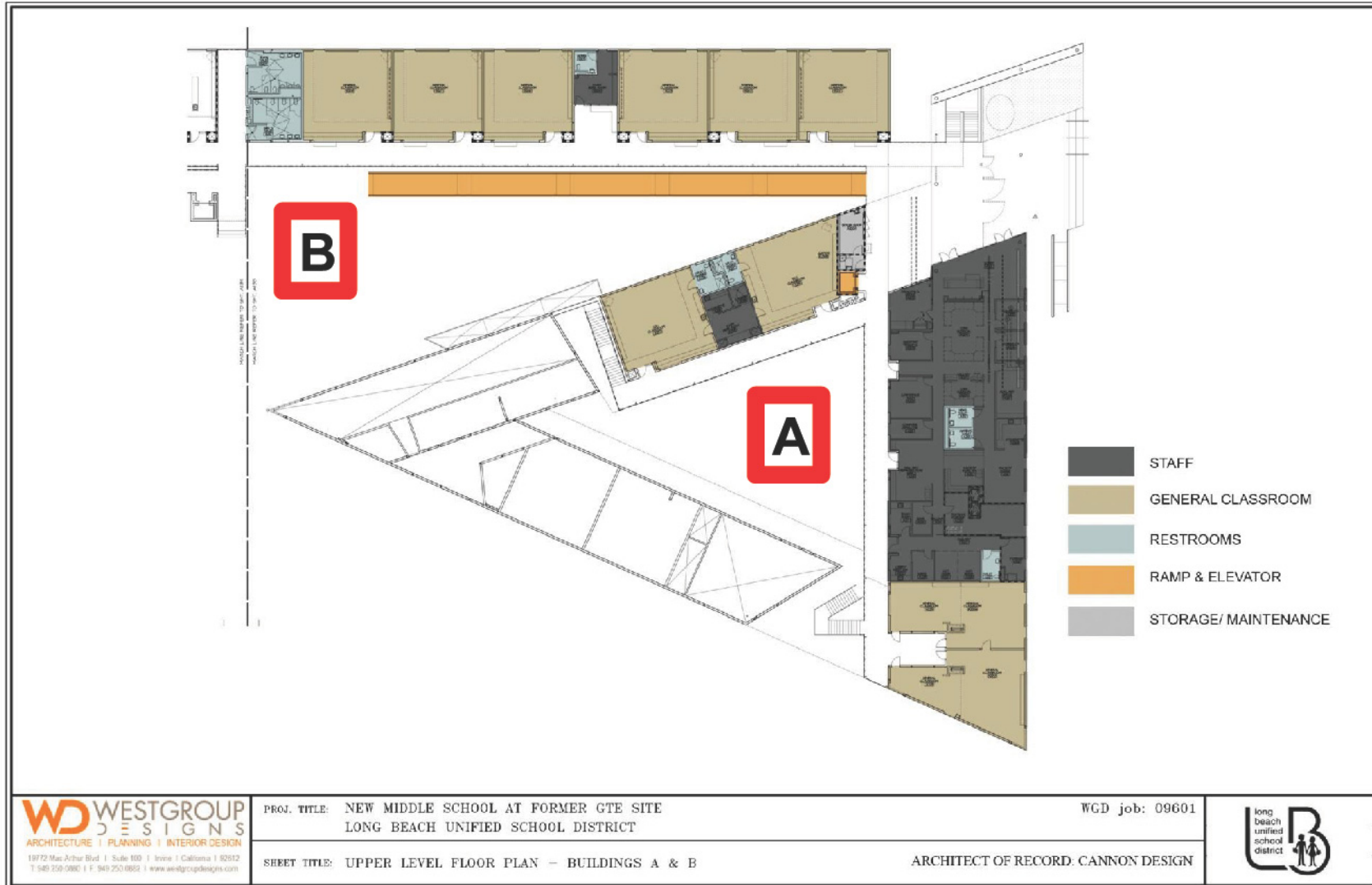
- Construction Budget: GMP - \$38.3 M
- State Funding of \$12.9 M Under Critically Overcrowded Schools (COS) Program
- Construction Contract Awarded July 7, 2009
- Notice to Proceed Issued on July 30, 2009
- Anticipated Construction Duration – 22 months
- Anticipated School Opening – September 6, 2011

Site Overview Construction Photo

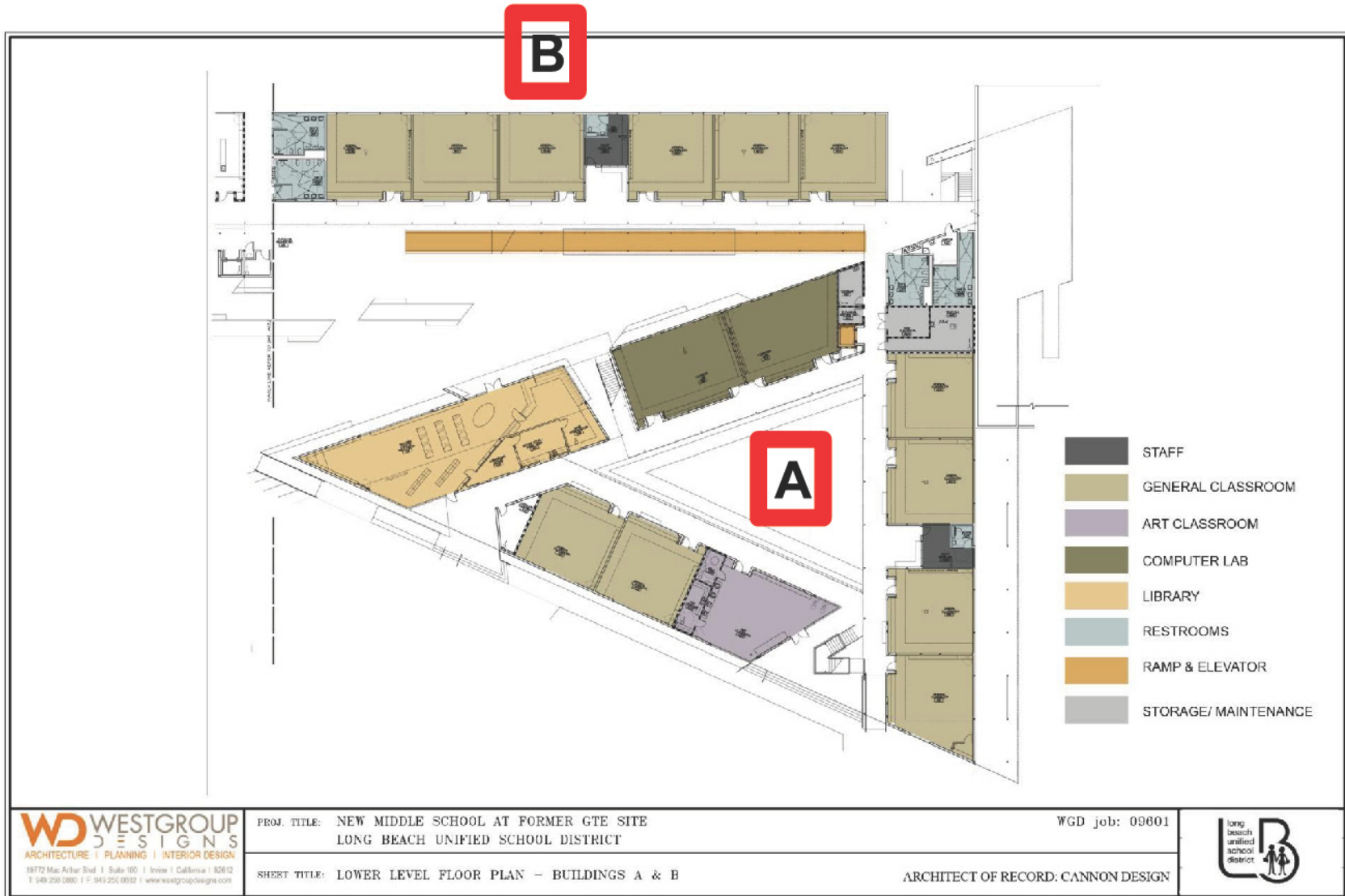




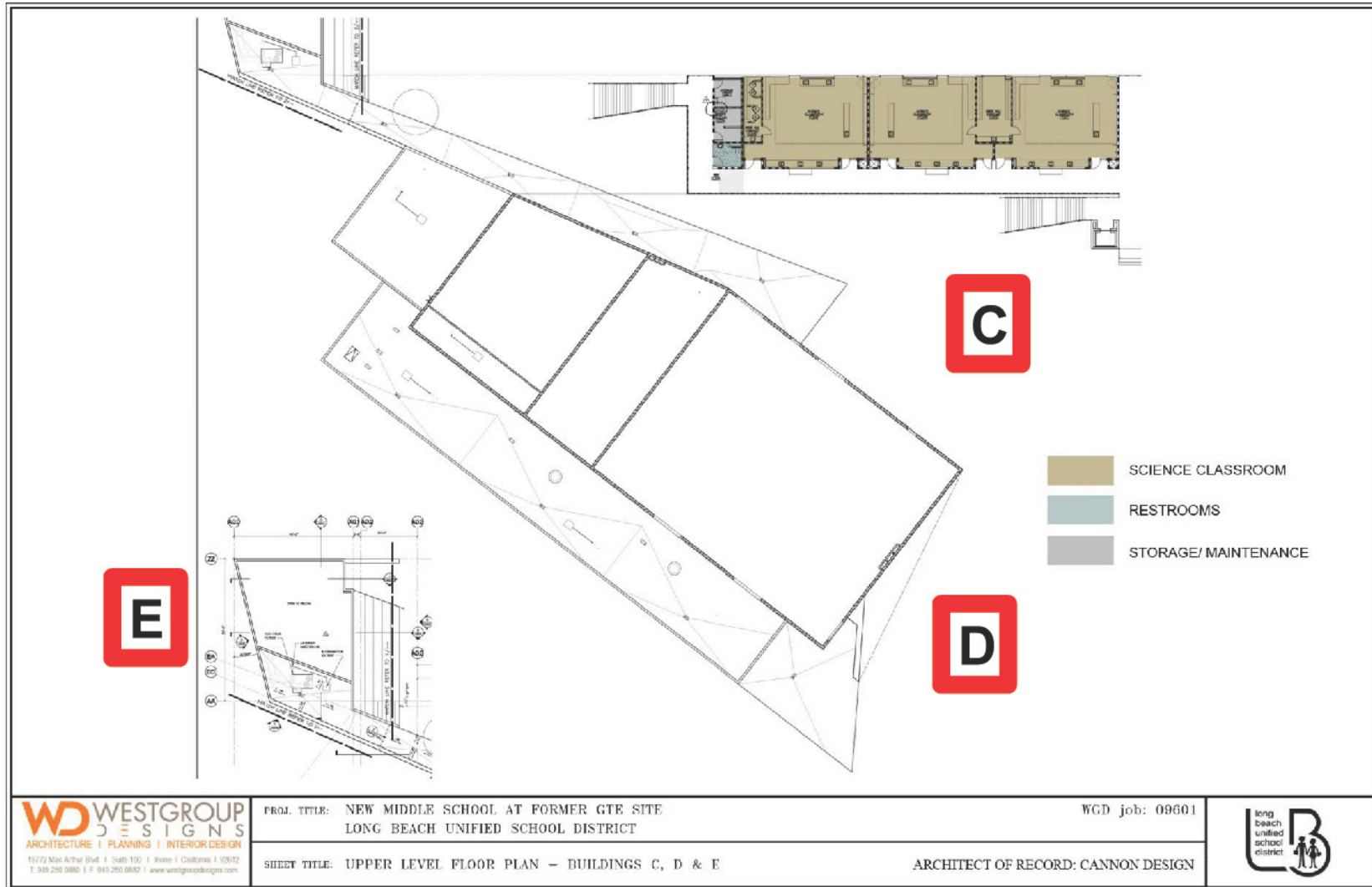
Buildings A and B Upper Level Floor Plan



Buildings A and B Lower Level Floor Plan



Buildings C, D and E Upper Level Floor Plan



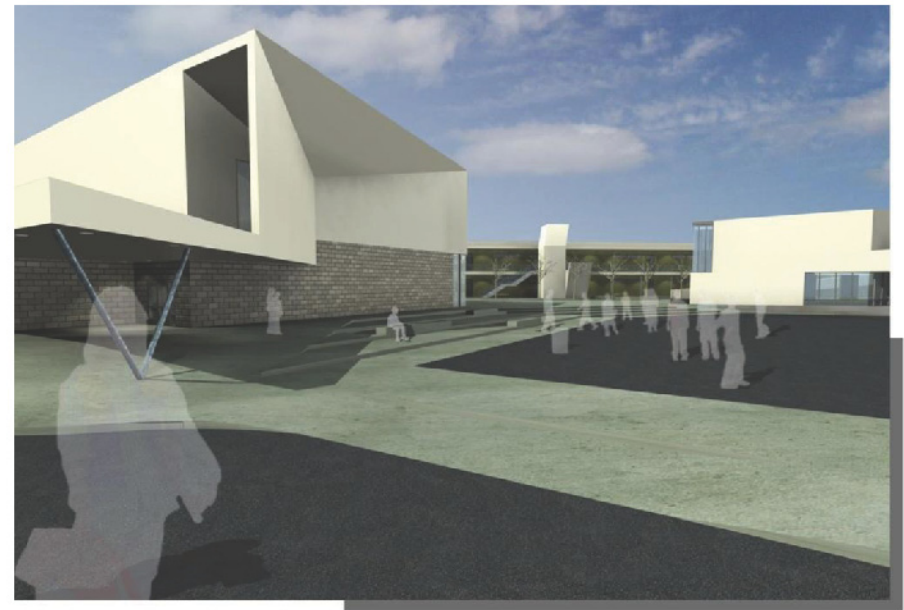
Buildings C, D and E Lower Level Floor Plan



Architectural Renderings



Main Entrance View from Cherry Avenue



Gymnasium / Library / Courtyard View