



MEASURE K SCHOOL BONDS
Building for 21st Century Learning

Measure K Bond Program

Project Update

September 27, 2012

Long Beach Unified School District

CITIZENS' BOND OVERSIGHT COMMITTEE





- I. Major Projects Update
- I. District Wide Projects Update



I. Major Projects Update

Jessie Elwin Nelson Middle School

Project Summary:

- New 6-8 Middle School in the Poly Planning Area off of 20th Street and Cherry Avenue
- 31 Classrooms (89,288 S.F.)
- Library/Media Center, Gymnasium, Multipurpose Room, Other Support Facilities including a Soccer Field and Hard Court Areas
- \$12.9M State Funds received

Project Status:

- Construction Phase: Complete
- School opened: September 5, 2012

Upcoming Activities:

- Close Out and Certification



Project Team:

- *Architect:* WestGroup Design
- *Contractor:* McCarthy Building Companies, Inc.
- *Inspector:* Knowland Inspection Services

Budget:

- Estimated Total Project Budget: \$60.93M
- Estimated Construction Budget: \$45.41M
- Dollars Expended as of (7/31/12): \$56.37M



I. Major Projects Update

Jessie Elwin Nelson Middle School



View of Main Entry / Bldg. A



View of Main Entry / Bldg. A



View of courtyard between A, B and D



View courtyard between C and E



I. Major Projects Update

Jessie Elwin Nelson Middle School



View of Bldg. A



View of Bldg. D



View of playfields and Bldg. A and D



View courtyard between A, B and D

Construction Progress Photos

Long Beach Unified School District



I. Major Projects Update

Jessie Elwin Nelson Middle School



View of Administration lobby



View of Computer Lab



View of Library



View of typical Classroom

Construction Progress Photos

Long Beach Unified School District



I. Major Projects Update

Ernest S. McBride, Sr. High School

Project Summary:

- New High School in the Millikan Planning Area.
- 43 Classrooms (150,000 S.F.)
- Self-Contained Athletics Programs
- Two Grant Applications Approved:
 - Health/Medical
Grant: \$1.5M
Matching Contribution: \$1.5M
 - Engineering Design
Grant: \$1.5M
Matching Contribution: \$1.5M

Project Status:

- Main Buildings: Construction started 7/1/11 and is approximately 60% complete
- Anticipated school opening: September 2013



Project Team:

- *Architect:* LPA, Inc.
- *Contractor (Demo & Abatement):* A to Z
- *Contractor (Waterline Relocation):* Excel Paving
- *Contractor (Main Buildings):* Hensel Phelps
- *Inspector (Main Buildings):* Knowland Inspection Services

Budget:

- Estimated Total Project Budget: \$100.31M
- Estimated Construction Budget: \$74.10M
- Dollars Expended as of (7/31/12): \$47.82M



I. Major Projects Update

Ernest S. McBride, Sr. High School



Site Plan



I. Major Projects Update

Ernest S. McBride, Sr. High School



View of Bldg. A - Administration



View of Bldg. A and G



View of Bldg. H - Classrooms



View of Bldg. B - Classrooms

Construction Progress Photos

Long Beach Unified School District



I. Major Projects Update

Ernest S. McBride, Sr. High School



View of Bldg. F - Gymnasium



View of Bldg. F – Locker Room



View of Bldg. B Classroom Common Area

Construction Progress Photos

Long Beach Unified School District



I. Major Projects Update

Roosevelt Elementary School New Construction

Project Summary:

- Existing 64,000 S.F. facility in the Poly Planning area
- Built in 1935 with additions in 1945 and 1966
- 3.8 Acre Site
- Facilities Master Plan recommended complete campus replacement
- New Elementary School will be approximately 99,000 S.F and provide 47 classrooms
- On-site parking structure for staff

Project Status:

- Construction Documents: Completed
- DSA/CDE Agency: Submitted
- Target school re-opening: January 2015 or September 2015
- Interim Housing – entire site moved to Butler

Upcoming Activities:

- Decommissioning Activities: Completed
- Demolition and Abatement: Underway



Project Team:

Architect: Ghataode Bannon Architects, LLP
Pre-Construction Consultant: Tilden Coil Constructors

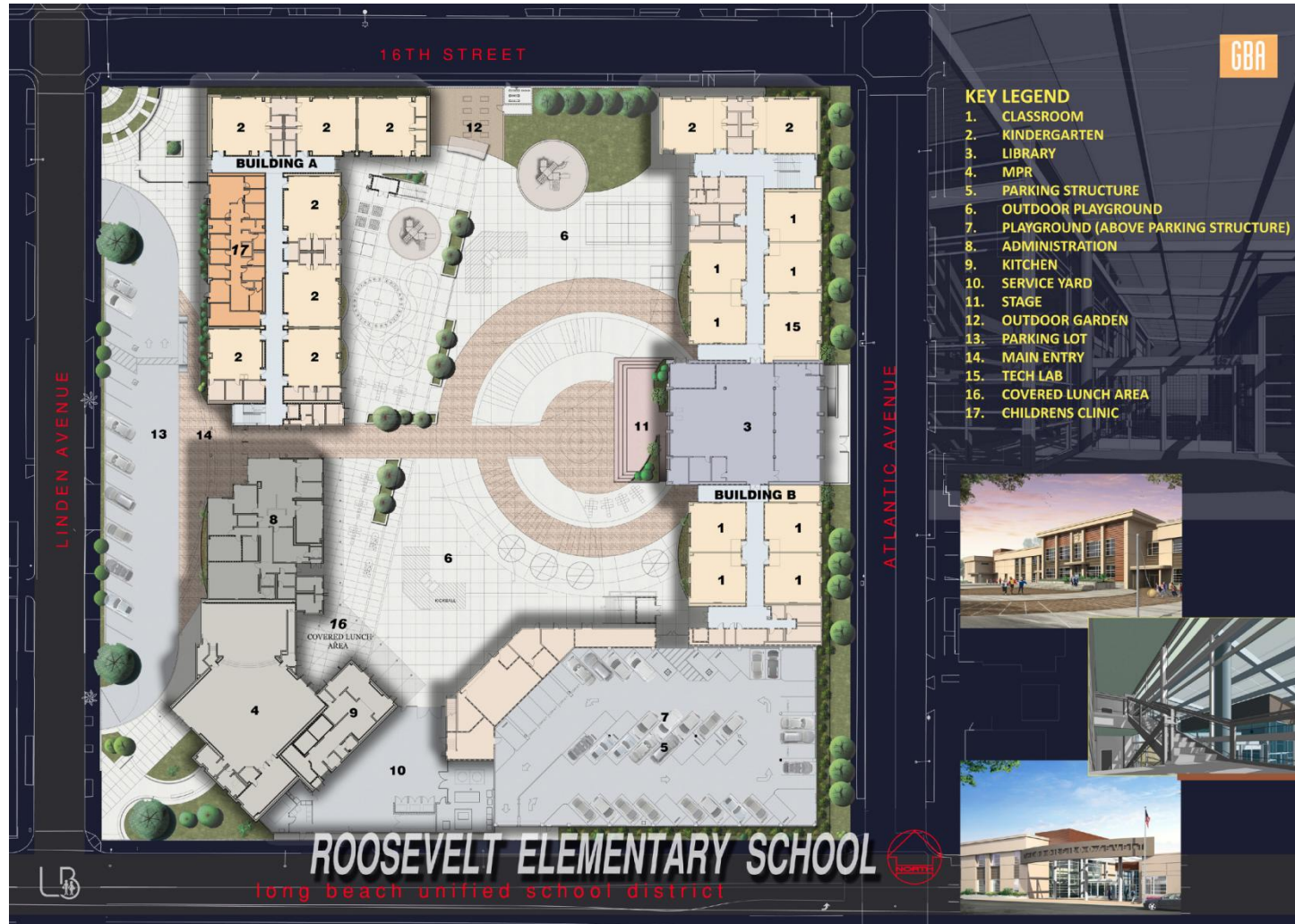
Budget:

- Estimated Total Project Budget: \$54.32M
- Estimated Construction Budget: \$41.01M
- Dollars Expended as of (7/31/12): \$2.93M



I. Major Projects Update

Roosevelt Elementary School New Construction





MEASURE K SCHOOL BONDS
Building for 21st Century Learning

I. Major Projects Update

Roosevelt Elementary School New Construction

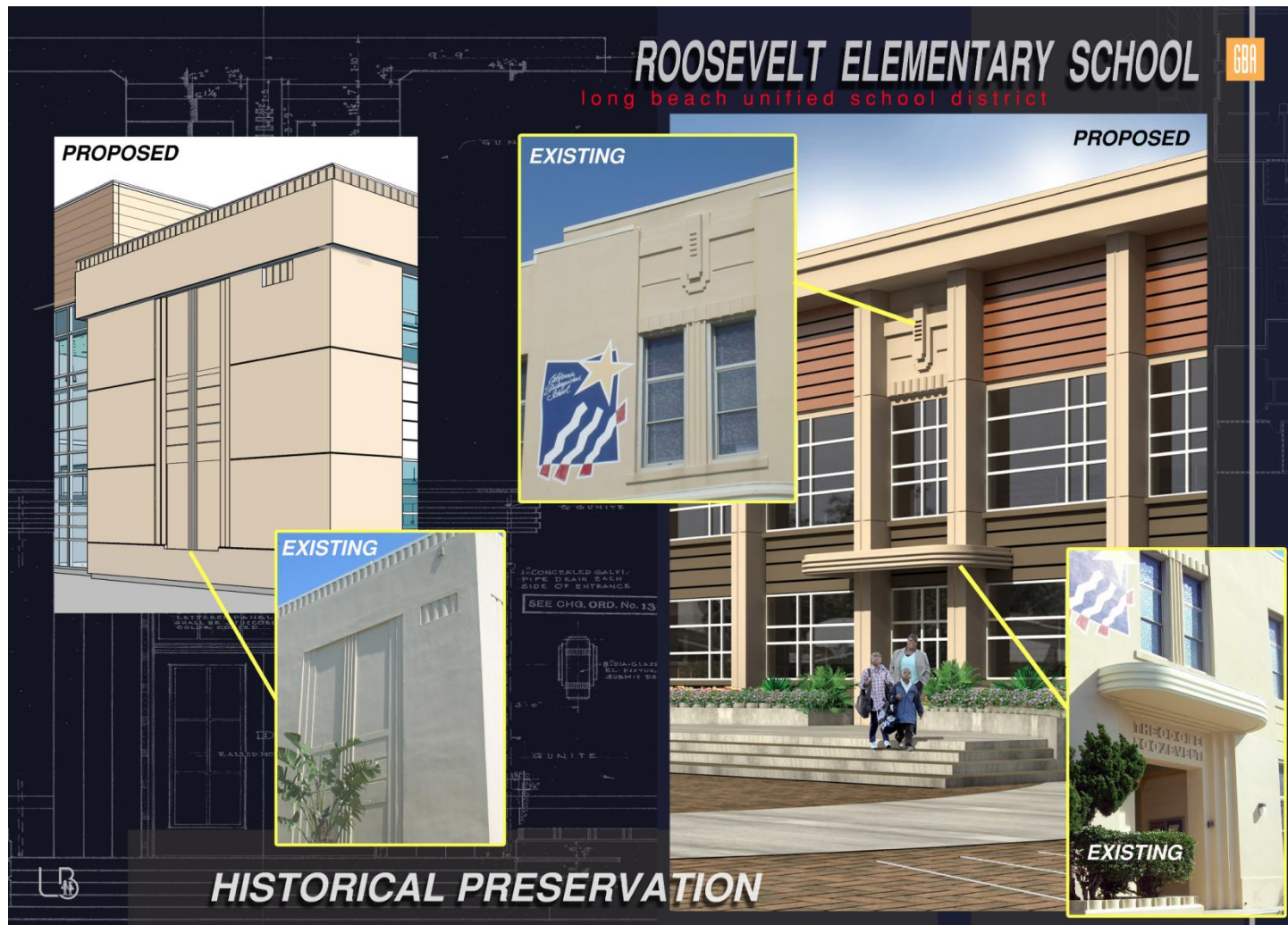


Long Beach Unified School District



I. Major Projects Update

Roosevelt Elementary School New Construction





I. Major Projects Update

Roosevelt Elementary School New Construction





I. Major Projects Update

Roosevelt Elementary School New Construction





MEASURE K SCHOOL BONDS
Building for 21st Century Learning

I. Major Projects Update

Roosevelt Elementary School New Construction





I. Major Projects Update

Cabrillo High School Pool

Project Summary:

- New 40 meter pool and associated support facilities for Cabrillo High School
- Campus build out was completed in 2000
- Scope will include:
 - Addressing access and parking
 - New campus marquee sign
 - Computer lab HVAC upgrade



Project Team:

- *Architect:* PJHM Architects, Inc.
- *Contractor:* C.W. Driver

Project Status:

- Construction Phase: Construction started 7/7/12 and is approximately 5% complete
- Anticipated Pool opening: Summer 2013

Budget:

- Estimated Total Project Budget: \$15.98M
- Estimated Construction Budget: \$11.43M
- Dollars Expended as of (7/31/12): \$1.01M



I. Major Projects Update

Cabrillo High School Pool



Birds-eye view from the northeast portion of the new pool facility



I. Major Projects Update

Cabrillo High School Pool



Compaction Grout Locations



Compaction Grout Mixer

Construction Progress Photos



Drill Rig

Long Beach Unified School District



I. Major Projects Update

Cabrillo High School Pool



Compaction Grout Equipment

Construction Progress Photos

Long Beach Unified School District



I. Major Projects Update

Jordan High School Major Renovation

Project Summary:

- Existing facilities built in 1930's and 1940's with additions built in the 1950's through 1990's
- 26.89 acre site with approximately 301,663 S.F. of permanent buildings and additional 31,680 S.F. of portable structures
- Facilities Master Plan recommends a Major Renovation
- Master Plan capacity is 3,600 students

Project Status:

- North Long Beach Initiative: Completed
- Master Planning and Conceptual Design: Completed
- Design Development: Underway
- Construction target start: May 2014 (may likely be phased construction over several years)

Upcoming Activities:

- Houghton Park Joint-use sport facilities design phase
- Interim housing design phase
- Phases 1 and 2 design phase
- Community Meeting – Fall 2012



Project Team:

- *Architect:* NTD Architects
- *Pre-Construction Consultant:* McCarthy Building Companies

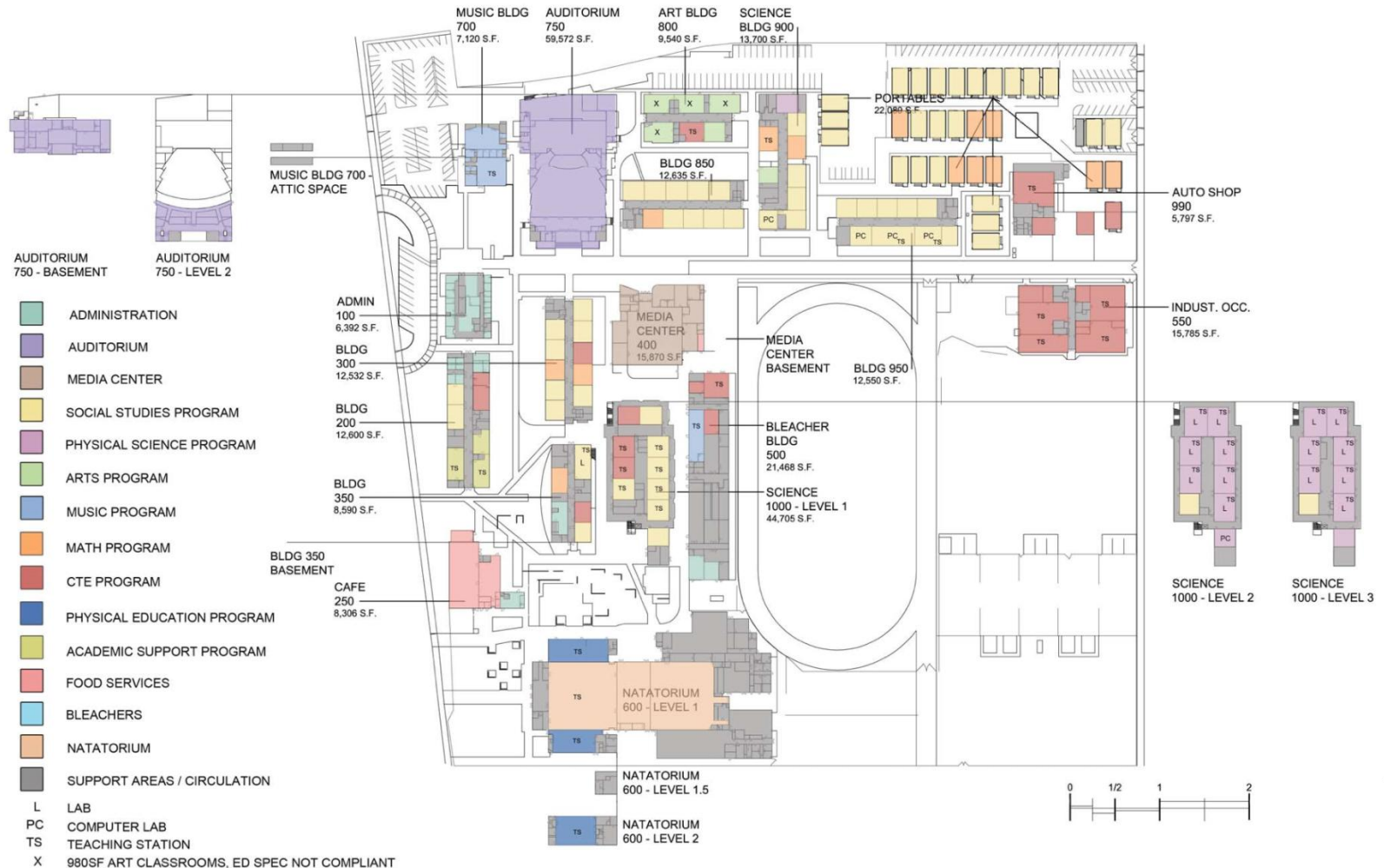
Budget:

- Estimated Total Project Budget: \$158.30M
- Estimated Construction Budget: \$105.80M
- Dollars Expended as of (7/31/12): \$2.66M



I. Major Projects Update

Jordan High School Major Renovation

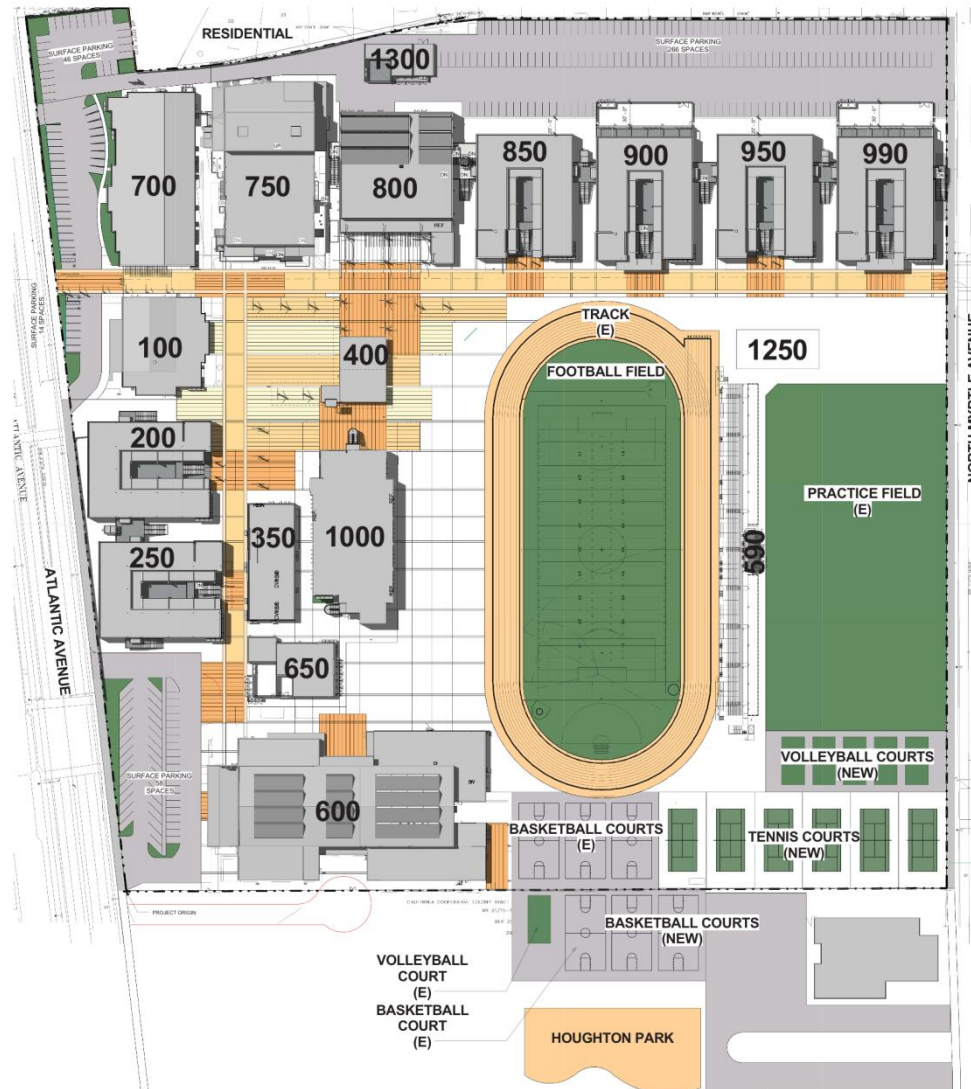


Existing Site Plan



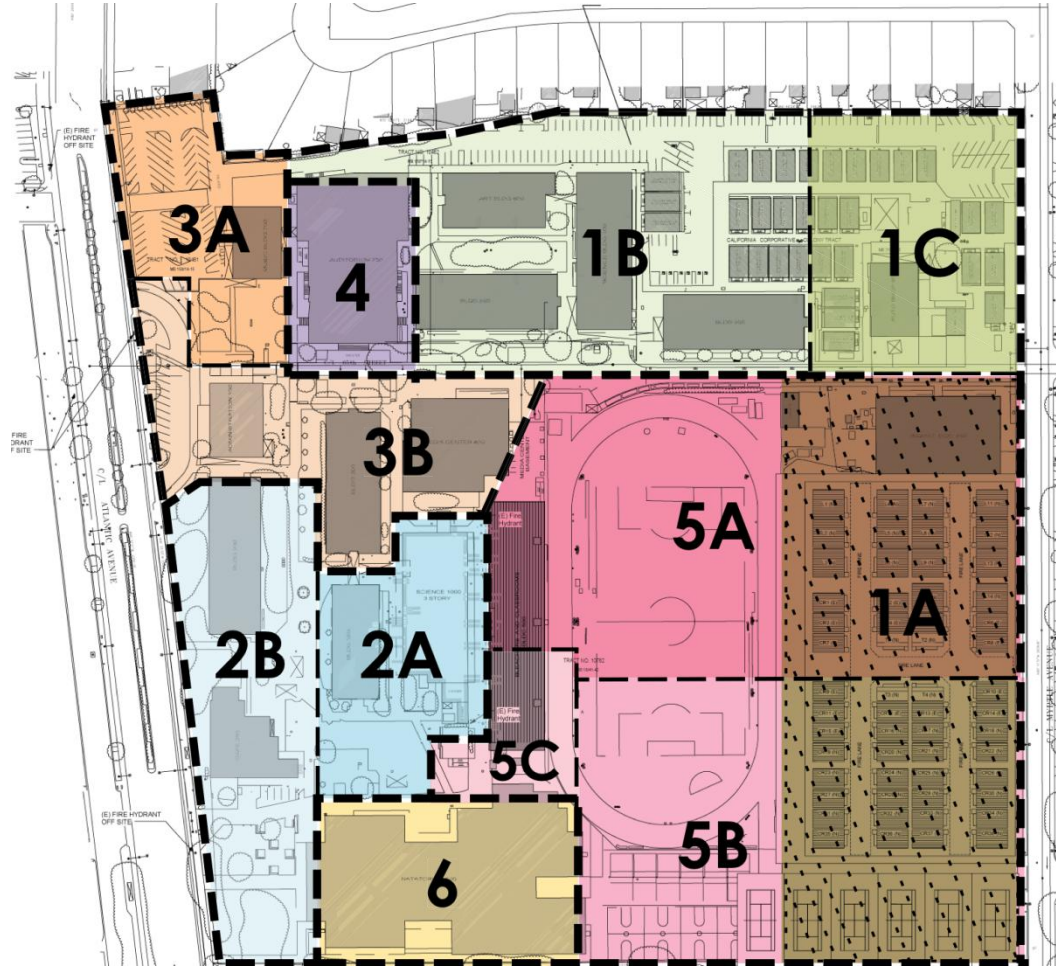
I. Major Projects Update

Jordan High School Major Renovation



Proposed Overall Site Plan

Long Beach Unified School District

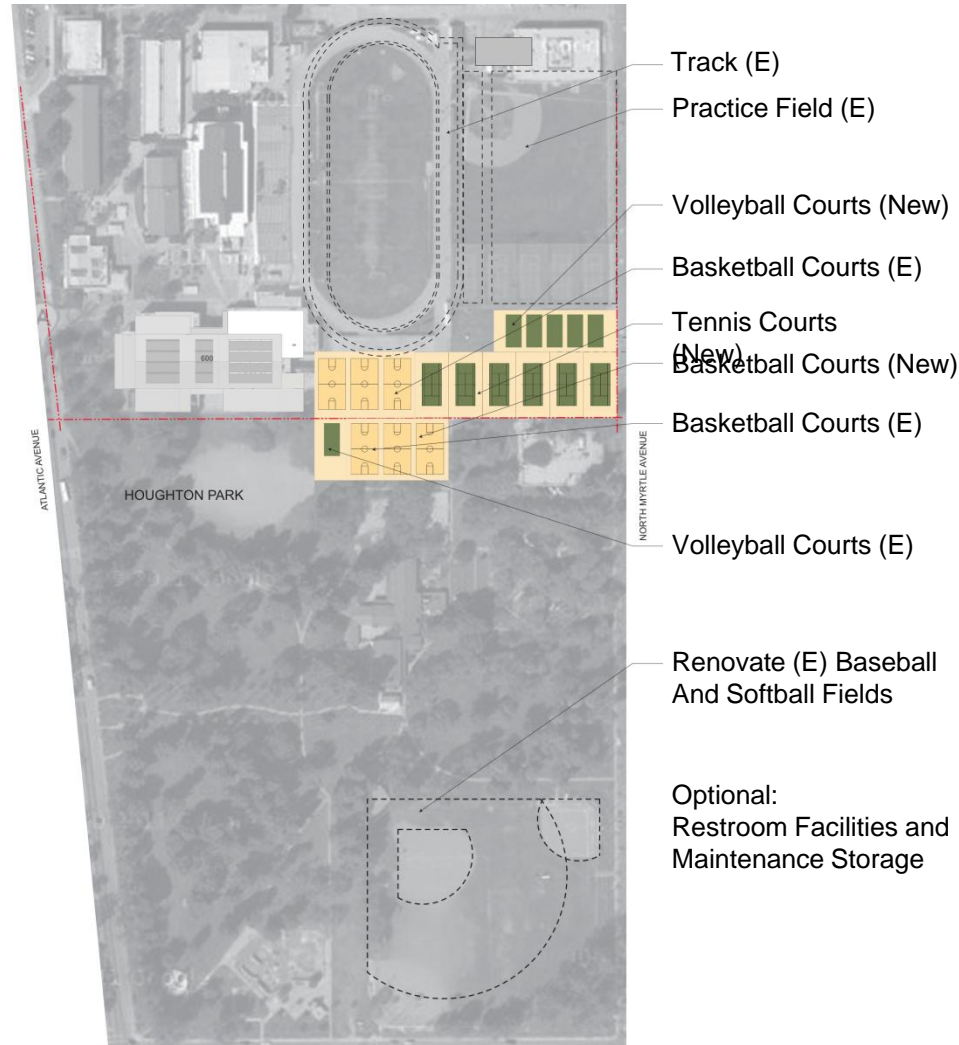


Proposed Phasing Plan



I. Major Projects Update

Jordan High School Major Renovation



Proposed Houghton Park Improvements

Long Beach Unified School District



I. Major Projects Update

New High School #2 at the Browning Site

Project Summary:

- New High School #2 at the Browning school site off of Hill Street and Redondo Avenue located in the Wilson Planning Area
- 10.258 Acre Site
- Master Plan capacity is 800 students
- Educational programs being considered include: hospitality, tourism, recreation, and people movement



Project Team:

- *Architect:* NAC Architecture
- *Pre-Construction Consultant:* Hensel Phelps

Budget:

- Estimated Total Project Budget: \$63.39M
- Estimated Construction Budget: \$44.90M
- Dollars Expended as of (7/31/12): \$857K

Project Status:

- Site/Property Investigations and Master Planning: Completed
- High School Planning Committee: Completed
- Conceptual Design: Under review
- Anticipated school opening: September 2016



I. Major Projects Update

New High School #2 at the Browning Site



AERIAL PERSPECTIVE - NORTH WEST CORNER



MEASURE K SCHOOL BONDS
Building for 21st Century Learning

I. Major Projects Update

New High School #2 at the Browning Site



PERSPECTIVES - JUNE 15TH, 2012

VIEWS FROM OBISPO

Long Beach Unified School District



I. Major Projects Update

New High School #2 at the Browning Site





I. Major Projects Update

New High School #3 (JFA Site)

Project Summary

- Existing 58,352 S.F. facility in the Jordan Planning Area
- Built in 2001
- 8.5 Acre Site
- Facility Master Plan recommendation to move students to Jordan High School
- Convert Jordan Freshman Academy (JFA) to a small High School
- Educational programs being considered include: computer science, technology engineering, and mathematics

Project Status

- Facility Assessment: Completed
- Construction Documents: Under review
- Construction Anticipated: Spring 2013

Upcoming Activities:

- DSA Review process



Project Team:

- *Architect:* : NAC Architecture
- *Pre-Construction Consultant:* TBD

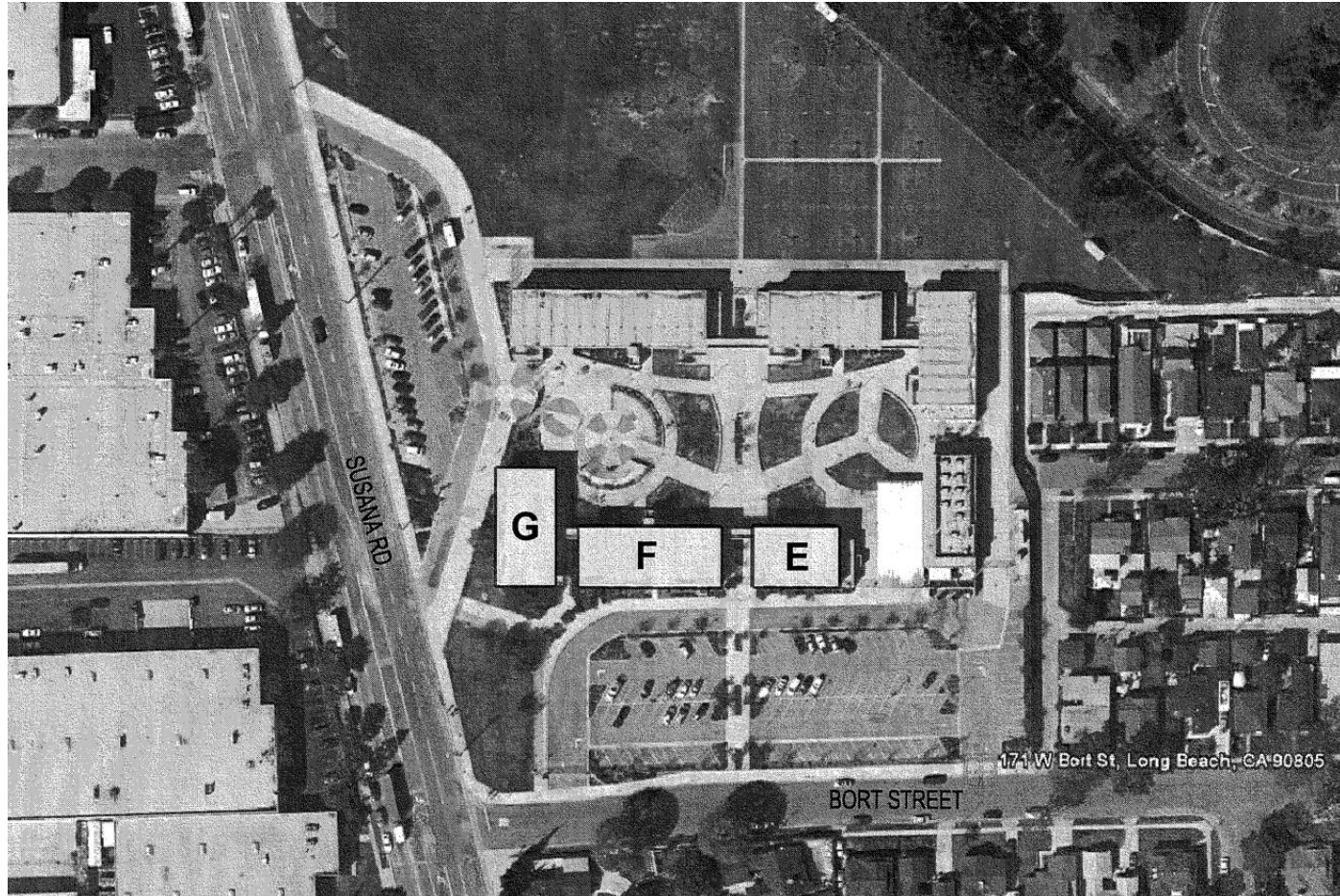
Budget:

- Estimated Total Project Budget: \$5.00M
- Estimated Construction Budget: \$2.50M
- Dollars Expended as of (7/31/12): \$240K



I. Major Projects Update

New High School #3 (JFA Site)





II. District Wide Projects Update

Newcomb K-8 AB300/New Construction

Project Summary:

- Existing 69,000 S.F. facility in the Millikan Planning Area
- Built in 1962 and 1964
- 13.5 Acre Site
- Original scope of work includes AB300 Seismic Retrofit and Major Renovation/Addition (Facility Master Plan)
- Current recommended scope of work is a complete campus replacement
- New 122,000 S.F. facility will include 46 classrooms

Project Status:

- Construction Documents: 50% CD's under review
- Target School re-opening: September 2015
- Interim Housing – entire site moved to Keller

Upcoming Activities:

- Decommissioning Activities: Completed
- Demolition and Abatement: Underway
- DSA confirmation of SMP Funding eligibility: Underway



Project Team:

- *Architect:* Westgroup Designs, Inc.
- *Pre-Construction Consultant:* Turner Construction Company

Budget:

- Estimated Total Project Budget: \$56.39M
- Estimated Construction Budget: \$40.23M
- Dollars Expended as of (7/31/12): \$2.85M



II. District Wide Projects Update

Newcomb K-8 AB300/New Construction



NEWCOMB ACADEMY K-8
LONG BEACH UNIFIED SCHOOL DISTRICT | MAY 2012

SITE PLAN AND ENTRANCE VIEWS



II. District Wide Projects Update

Newcomb K-8 AB300/New Construction



NEWCOMB ACADEMY K-8
LONG BEACH UNIFIED SCHOOL DISTRICT | MAY 2012

AERIAL VIEW AND SPACE STUDIES



II. District Wide Projects Update

Bancroft MS Gym AB300

Project Summary:

- Seismic upgrade to Gym building identified on the State's AB300 report.
- Scope of work is limited to seismic upgrade and subject to confirmation with DSA.



Project Status:

- DSA confirmation of SMP Funding eligibility: Completed
- Building Assessment and scope development: Completed
- Construction Documents: Underway
- Construction Anticipated: Summer 2013

Project Team:

- *Architect:* LPA, Inc.
- *Pre-Construction Consultant:* C.W. Driver

Budget:

- Estimated Total Project Budget: \$2.56M
- Estimated Construction Budget: \$1.69M
- Dollars Expended as of (7/31/12): \$97K



II. District Wide Projects Update

Hamilton MS Gym AB300

Project Summary:

- Seismic upgrade to Gym building identified on the State's AB300 report.
- Scope of work is limited to seismic upgrade and subject to confirmation with DSA.



Project Status:

- DSA confirmation of SMP Funding eligibility: Completed
- Building Assessment and scope development: Underway
- Construction Anticipated: TBD

Project Team:

- *Architect:* LPA, Inc.
- *Pre-Construction Consultant:* C.W. Driver

Budget:

- Estimated Total Project Budget: \$1.34M
- Estimated Construction Budget: \$750K
- Dollars Expended as of (7/31/12): \$70K



II. District Wide Projects Update

Hill MS Gym AB300

Project Summary:

- Seismic upgrade to Gym building identified on the State's AB300 report.
- Scope of work is limited to seismic upgrade and subject to confirmation with DSA.



Project Status:

- DSA confirmation of SMP Funding eligibility: Completed
- Building Assessment and scope development: Underway
- Construction Anticipated: TBD

Project Team:

- *Architect:* LPA, Inc.
- *Pre-Construction Consultant:* C.W. Driver

Budget:

- Estimated Total Project Budget: \$1.34M
- Estimated Construction Budget: \$750K
- Dollars Expended as of (7/31/12): \$78K



II. District Wide Projects Update

Hoover MS Gym AB300

Project Summary:

- Seismic upgrade to Gym building identified on the State's AB300 report.
- Scope of work is limited to seismic upgrade and subject to confirmation with DSA.



Project Status:

- DSA confirmation of SMP Funding eligibility: Completed
- Building Assessment and scope development: Completed
- Construction Documents: Underway
- Construction Anticipated: Summer 2013

Project Team:

- *Architect:* LPA, Inc.
- *Pre-Construction Consultant:* C.W. Driver

Budget:

- Estimated Total Project Budget: \$1.75M
- Estimated Construction Budget: \$1.07M
- Dollars Expended as of (7/31/12): \$72K

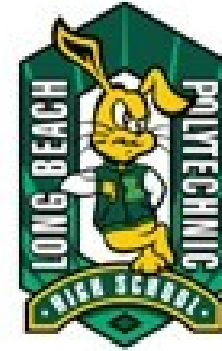


II. District Wide Projects Update

Polytechnic HS Auditorium AB300

Project Summary:

- Seismic upgrade to Auditorium building identified on the State's AB300 report.
- Scope of work is limited to seismic upgrade and subject to confirmation with DSA.



Project Team:

- *Architect:* LPA, Inc.
- *Pre-Construction Consultant:* TBD

Budget:

- Estimated Total Project Budget: \$20.27M
- Estimated Construction Budget: \$14.00M
- Dollars Expended as of (7/31/12): \$5K

Project Status:

- Building Assessment and scope development: Underway
- Construction Anticipated: TBD



II. District Wide Projects Update

Wilson HS Auditorium AB300

Project Summary:

- Seismic upgrade to Auditorium building identified on the State's AB300 report.
- Scope of work is limited to seismic upgrade and subject to confirmation with DSA.



Project Team:

- *Architect:* LPA, Inc.
- *Pre-Construction Consultant:* TBD

Budget:

- Estimated Total Project Budget: \$20.37M
- Estimated Construction Budget: \$14.00M
- Dollars Expended as of (7/31/12): \$0K

Project Status:

- Building Assessment and scope development: Underway
- Construction Anticipated: TBD



II. District Wide Projects Update

DOH Portable Removal Phase I

Project Summary:

- Remove DOH (Department of Housing) Buildings at 14 Sites:

- Addams E.S.
- Grant E.S.
- Hamilton M.S.
- Harte E.S.
- Keller E.S.
- Kettering E.S.
- Beach H.S. (Former Long Beach School for Adults)
- McKinley E.S.
- Robinson K-8
- Signal Hill E.S.
- Stephens M.S.
- Webster E.S.
- Willard E.S.
- Wilson H.S.

Project Status:

- Project Close-out: Underway



Completed

Project Team:

- *Architect:* Lionakis Architects
- *Contractor:* Norm Wilson & Sons, Inc. (2 Sites)
- *Contractor:* DOJA, Inc. (12 Sites)

Budget:

- Estimated Total Project Budget: \$513K
- Estimated Construction Budget: \$301K
- Dollars Expended as of (7/31/12): \$412K



II. District Wide Projects Update

Lakewood DOH Portable Removal

Project Summary:

- Remove DOH (Department of Housing) Building (40'x72') at Lakewood High School



Completed

Project Status:

- Project Closeout: Underway

Project Team:

- *Architect:* MSP Architects
- *Contractor:* VOLTCOM

Budget:

- Estimated Total Project Budget: \$96.1K
- Estimated Construction Budget: \$54.5K
- Dollars Expended as of (7/31/12): \$78.2K



II. District Wide Projects Update

Portable Removal Phase I

Project Summary:

- Removal of portable buildings at the following sites:
 - Lindbergh M.S.
 - Stephens M.S.



Completed

Project Team:

- *Architect:* NAC Architecture
- *Contractor:* Oceanstate Development, Inc.

Budget:

- Estimated Total Project Budget: \$487.6K
- Estimated Construction Budget: \$267.0K
- Dollars Expended as of (7/31/12): \$339.1K

Project Status:

- Project Close-out: Underway



II. District Wide Projects Update

Portable Removal Phase II

Project Summary:

- Removal of portable buildings at the following sites:
 - Birney E.S.
 - Burbank E.S.
 - Cleveland E.S.
 - Gant E.S.
 - Grant E.S.
 - Kettering E.S.
 - King E.S.
 - MacArthur E.S.
 - McKinley E.S.
 - Madison E.S.
 - Riley E.S.
 - Webster E.S.
 - Gompers K-8
 - Hamilton M.S.
 - Lindsey M.S.
 - Hoover M.S.
 - Millikan H.S.



Project Team:

- *Architect:* MSP Architects
- *Contractor:* TBD

Budget:

- Estimated Total Project Budget: \$3.13M
- Estimated Construction Budget: \$2.1M
- Dollars Expended as of (7/31/12): \$0K

Project Status:

- Site assessment underway
- Anticipated Removal: Summer 2013



II. District Wide Projects Update

Harte Deportablization and Restroom Relocation

Project Summary:

- Removal of 4 bungalow buildings and related site work
- Relocation of a restroom building from Lindsey MS to Harte ES



Project Team:

- *Architect:* Architects MSP
- *Contractor:* Roebbelen/Daum

Budget:

- Estimated Total Project Budget: \$935.3K
- Estimated Construction Budget: \$721.9K
- Dollars Expended as of (7/31/12): \$71.2K

Project Status

- Removal/Relocation: Underway



II. District Wide Projects Update

Boiler Replacement Phase I

Project Summary:

- Replacement of 24 Boilers at the following sites:
 - Bancroft M.S.
 - Gant E.S.
 - Kettering E.S.
 - Lakewood H.S.
 - Beach H.S. (Former Long Beach School for Adults)
 - Lowell E.S.
 - McKinley E.S.
 - Millikan H.S.
 - Tincher Preparatory School
 - Wilson H.S.

Project Status:

- DSA Approval: Completed
- Anticipated Construction: Summer 2013



Project Team:

Architect: Ruhnau Ruhnau Clarke Architects

Contractor: TBD

Budget:

Estimated Total Project Budget: \$3.39M

Estimated Construction Budget: \$2.43M

Dollars Expended as of 7/31/12): \$288.9K



II. District Wide Projects Update

Fire Alarm, Intercom & Clock Replacement Phase I

Project Summary:

- Removal and replacement of Fire Alarm, Intercom & Clock systems at the following sites:
 - Adams E.S.
 - Bryant E.S.
 - Lee E.S.
 - Lincoln E.S.
 - McKinley E.S.
 - Rogers M.S.
 - Stephens M.S.
 - Washington M.S.
 - Willard E.S.
- Original project scope included ceiling and light fixture replacement was revised due to DSA scoping issues

Project Status:

- Site Assessment and Design Development: Completed
- Construction Documents: 100% CD's under review
- Anticipated Construction: Summer 2013



Project Team:

- *Architect:* CSDA Architects
- *Contractor:* TBD

Budget:

- Estimated Total Project Budget: \$6.49M
- Estimated Construction Budget: \$3.60M
- Dollars Expended as of (7/31/12): \$976K



II. District Wide Projects Update

Fire Alarm, Intercom & Clock Replacement Phase II

Project Summary:

- Removal and replacement of Fire Alarm, Intercom & Clock systems at the following sites:
 - Barton E.S.
 - Bixby E.S.
 - Cabrillo H.S.
 - Cleveland E.S.
 - International E.S.
 - Kettering E.S.
 - Webster E.S.
 - Hudson E.S.
 - Robinson E.S.
 - Jefferson E.S.
 - Lindberg E.S.



Project Team:

- *Architect:* Westburg+White, Inc.
- *Contractor:* TBD

Project Status:

- Site Assessment and Design Development: Completed
- Construction Documents: Underway
- Anticipated Construction: TBD

Budget:

- Estimated Target Project Budget: \$8.35M
- Estimated Construction Budget: \$6.00M
- Dollars Expended as of (7/31/12): \$1.37K



II. District Wide Projects Update

Core Switch and UPS Replacement Phase II

Project Summary:

- Replace core switch and UPS at remaining 33 sites that were not covered by ERATE Funds

Elementary Schools

Carver ES
Cleveland ES
Emerson ES
Fremont ES
Gant ES
Kettering ES
Longfellow ES
Los Cerritos ES
Lowell ES
Madison ES
Naples ES
Prisk ES
Tucker
Twain ES

Middle Schools

Cubberley K-8
Gompers K-8
Henry MS
Newcomb K-8
Powell K-8
Rogers MS
Stanford MS
Tincher K-8

High Schools

Cabrillo HS
CAMS
Reid HS
Jordan
Will
La and HS
M... HS
P... S
(Poly)
Missance HS
son HS



Completed

Project Status:

- Vendor Selection: Completed
- Installation: Completed
- Project Close-out: Underway

Budget:

- Estimated Total Project Budget: \$850.0K
- Dollars Expended as of (7/31/12): \$817.8K



II. District Wide Projects Update

Intercom and Clock System Replacement Phase I and II

Project Summary:

- Replacement and new installation of intercom and clock systems at 51 elementary and middle school sites



Project Team:

- *Architect (Phase I):* Westburg+White, Inc.
- *Contractor:* TBD

Project Status:

- Site assessments and project scope development: Underway
- Construction Anticipated: Phase I - Fall 2013

Budget:

- Estimated Target Project Budget: \$5.0M
- Dollars Expended as of (7/31/12): \$0



II. District Wide Projects Update

Security Technology, Infrastructure, Intercom and Clock Replacement

Project Summary:

- Upgrade security technology, infrastructure, intercom and clock replacement at all high school sites



Project Team:

- *Architect:* TBD
- *Contractor:* TBD

Project Status:

- A/E Selection: Underway
- Site assessments and project scope development: Underway
- Construction Anticipated: Spring 2013

Budget:

- Estimated Target Project Budget: \$1.5M
- Dollars Expended as of (7/31/12): \$0



II. District Wide Projects Update

Telecommunications

Project Summary:

- Replace phone switch and handsets at 80 sites
- ERATE Funds will be used at 35 Elementary and Middle School sites
- Phased implementation strategy over several years starting with 8 High School sites



Project Status:

- Procurement Process: Underway
- Construction Anticipated: Winter 2013

Budget:

- Estimated Total Project Budget: \$7.0M
- Dollars Expended as of (7/31/12): \$0



II. District Wide Projects Update

Wireless Data Communications Phase I and II

Project Summary:

- Installation of wireless access points at 84 sites
- Common Core State Standards (CCSS) for Electronic Assessments of English language arts and mathematics
- ERATE Funds will be used at 35 Elementary and Middle School sites
- Phased implementation strategy over several years
- Phase I – Pilot project at 4 sites:
 - Longfellow ES
 - Marshall MS
 - Washington MS
 - Wilson HS



Project Status:

- Wireless Assessments: Underway
- Construction Anticipated: Phase I - Fall 2012

Budget:

- Estimated Total Project Budget: \$18.8M
- Dollars Expended as of (7/31/12): \$224.7K

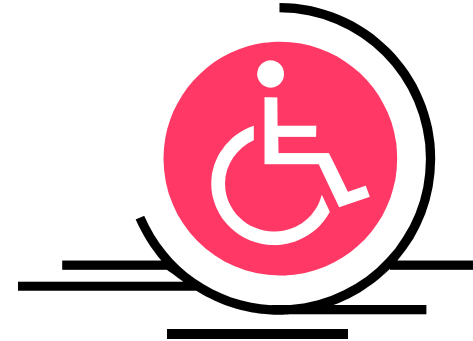


II. District Wide Projects Update

ADA Improvements Phase I

Project Summary:

- ADA Improvements at the following sites:
 - Stephens M.S.
Accessibility upgrades to various portable classroom buildings
 - King E.S.
Accessibility upgrades to the Administration Building



Project Team:

- *Architect:* NAC Architecture
- *Contractor:* Alley Cat Development, Inc.

Project Status:

- Construction: Underway

Budget:

- Estimated Total Project Budget: \$563K
- Estimated Construction Budget: \$349K
- Dollars Expended (as of 7/31/12): \$214K



II. District Wide Projects Update

DSA Certification

Project Summary:

- DSA Certification of 392 Applications identified to date
- 179 Applications are now Certified (complete)
- 211 Applications are under evaluation with 18 Applications at DSA for Certification
- 9 District sites are “Clear”:
 - Bancroft M.S.
 - Barton E.S.
 - Burnett E.S.
 - Hoover MS
 - Little Red School House
 - Longfellow E.S.
 - Los Cerritos E.S.
 - Naples E.S.
 - Willard E.S.

Project Status:

- Close-out activities underway for multiple sites



Budget:

- Estimated Total Project Budget: \$5.35M
- Estimated Construction Budget: \$2.96M
- Dollars Expended (as of 7/31/12): \$709K



This Presentation along with
Citizens' Oversight Committee
information is available at:

www.lbschools.net