



The Franklin Flash

Franklin Elementary School

Habit #7 Sharpen The Saw

Principal – Elizabeth White

ewhite@wausauschools.org

Secretary – Gina Lehman

glehman@wausauschools.org

1509 N 5th St Wausau WI 54403

Phone 715-261-0000 Fax 715-261-2144

Office Hours 8:30 AM - 3:30 PM

Student Arrival 8:15AM - 8:30AM

Upcoming Events

May 12th - Last G2M Class

May 16th - PTO Meeting 5:30PM - 6:30PM

May 19th - Art & Author Museum 5:00PM - 6:30PM

May 27th - No School

May 30th - No School

May 31st - 5th Grade Recognition 2:00PM - 3:00PM

June 2nd - PTO Spring Fling Picnic 5:00PM - 7:30PM

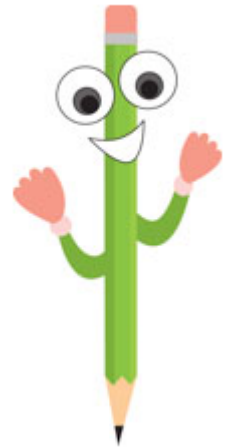
June 3rd - Last Day of School Early Release 11:30AM

August 29th - Fall Open House 4:00PM - 6:00PM

Sept 1st - First Day of School

4th Quarter Art Objectives

- 5th- Clay animal pinch pots
 - Quilling
 - Printmaking
 - 3-D sculptures
- 4th- Clay faces
 - 3-D Chickens
 - Eraser Printmaking
 - Stained Glass tissue paper
- 3rd- Clay animals maracas
 - 3-D Chickens
 - Eraser Printmaking
 - Stained Glass tissue paper
- K- Clay Butterfly
 - Umbrella Rain with buttons
 - Stamping
 - Stained Glass tissue paper
- 1st- Clay Owl
 - TP Recycle design
 - Stamping
 - Stained Glass tissue paper
- 2nd-Clay Tacos
 - TP Recycle Design
 - 3-D Chickens
 - Stamping
 - Stained Glass tissue



2022-2023
Registration for
Kindergarten now!

Enroll by clicking [HERE](#)

WE ARE BETTER TOGETHER

[Link](#)

Are You Moving?



If you move please notify Franklin Main office by calling 715-261-0000 or email Gina Lehman at glehman@wausauschools.org

Attention Hmong Parents: If you have questions or need explanation, please call Franklin Elementary School, 715-261- 0000 from 8:30 a.m. to 3:00 p.m. Yognejmuajlusnoogtxogdaimntawv no, Franklin Elementary School. Xovtoojyog 715-261-0000.

Attention Spanish Parents: If you have questions or need explanation, please call Franklin Elementary School. 715-261-0000 from 8:30 a.m. to 3:00 p.m. Atención Padres: Si tiene una duda, pregunta o necesita una explicación, por favor llame a la escuela Franklin Elementary 715-261-0000 de 8:30am- 3:00pm.

The Wausau School District does not discriminate on the basis of race, age, color, religion, national origin, ancestry, creed, pregnancy, marital status, parental status, sexual orientation, sex (including transgender status, change of sex or gender identity), or physical, mental, emotional, or learning disability ("Protected Classes"). To receive paper copy of newsletter email glehman@wausauschools.org

G2M

GROWING GREAT MINDS
Out-of-School Learning Programs



2022 Youth FREEDOM PASS

3 MONTHS
UNLIMITED BUS RIDES
ONLY \$28.00

Students age K-12 in the 2021-2022 school year can ride any Metro Ride bus route unlimited trips from June 1 - Aug. 31.

METRO Ride
Have Questions?
(715) 842-9287

GET YOUR PASS! AT THESE LOCATIONS STARTING MAY 1ST

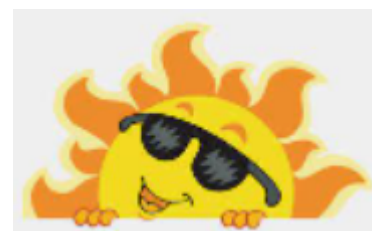
- + JOHN MUIR MIDDLE SCHOOL
- + HORACE MANN MIDDLE SCHOOL
- + WAUSAU EAST HIGH SCHOOL
- + WAUSAU WEST HIGH SCHOOL
- + COUNTY MARKET
- + WAUSAU CITY HALL
- + MARATHON COUNTY PARKS DEPARTMENT

Summer Learning

Register for Summer Learning

[Link for Online Enrollment](#)

Or request a paper enrollment form from the Franklin Elementary Main office by calling 715-261-0000 or email at glehman@wausaushools.org



First Student
WAUSAU

Now Hiring School Bus Drivers!
No Experience needed! We Train!

- \$18/HR Starting Wage
- \$2,500 Driver Sign-on Bonus*
- \$5,000 Experienced Driver Sign-on Bonus*
- PAID CDL Training!

730 South 17th Ave
Wausau WI 54401

For more information call:
715-842-2268

*Conditions apply. See location for details. Offer ends 5/31/22

Franklin Elementary PTO

Spring Fling Carnival Volunteers Needed!

Franklin Elementary PTO is hosting a 1st time Spring Fling Carnival on Thursday, June 2, 2022 from 5:00PM - 7:30PM . Set-up will begin approximately 1:00PM until the time of the event. We will need MANY volunteers to make the end-of-the-year even EPIC for all in attendance. There will be food, games, dunk tank, DJ, field games, prizes and more! We are thankful for any time you have available to volunteer.

Email franklinelementaryptoto5@gmail.com

Call or Text Amanda at 715-212-5862

Franklin Elementary

Thursday, 5/19/22
5:00-6:30 PM

Students will be showcasing art and writing projects.

Art and Author

A NIGHT AT THE MUSEUM



WAUSAU SCHOOL DISTRICT

Longfellow Administration Center

415 Seymour Street • P.O. Box 359 • Wausau, WI 54402-0359 • 715-261-0500 • www.wausauschools.org

Dr. Keith Hilts, Superintendent of Schools

April 26, 2022

Dear Parents and Guardians,

The Wausau School District is preparing to transition into our second year of *Leader in Me* which teaches 21st-century leadership and life skills to students while creating a culture of student empowerment based on the idea that every child can be a leader. Starting May 1st, each school will be conducting surveys to learn more about key areas of strength and areas of needed growth. We are asking students in Grade 4 through 9 and parents/guardians of students in grades K-12, to participate. Below is additional information about the process and content of the surveys.

Parent Information (For parents with students in grades K-12)

Please help us by completing a confidential survey which will be available through the Web link below. The survey is completely voluntary and takes about 12 minutes to complete. If you have more than one child attending the school, you will be asked to think about the oldest child's experiences as you answer questions related to his or her growth.

Survey Link Active May 1st - 14th: <https://www.leaderinme.com/s/franklin-elementary-wi/families>

(check SeeSaw and Email for a live link)

Student Information (For students in grade 4 through 9.)

If your child is attending school and is in Grades 4-9, he or she will be asked to complete a 20-minute multiple-choice assessment (no identifying information will be requested or collected) that will be confidentially administered by a classroom teacher. Students who do not participate in the survey will be provided with an appropriate alternative activity while the surveys are being administered.

If your child is in Grade 4 through 9 and you DO NOT want him or her to participate in the survey, please contact your child's principal by May 1st to opt out of the survey. Your decision to deny permission will not in any way influence your child's grades or your relationship with any member of our school. If you have any questions, please ask the building principal.

Ms. Libby White

LeaderinMe