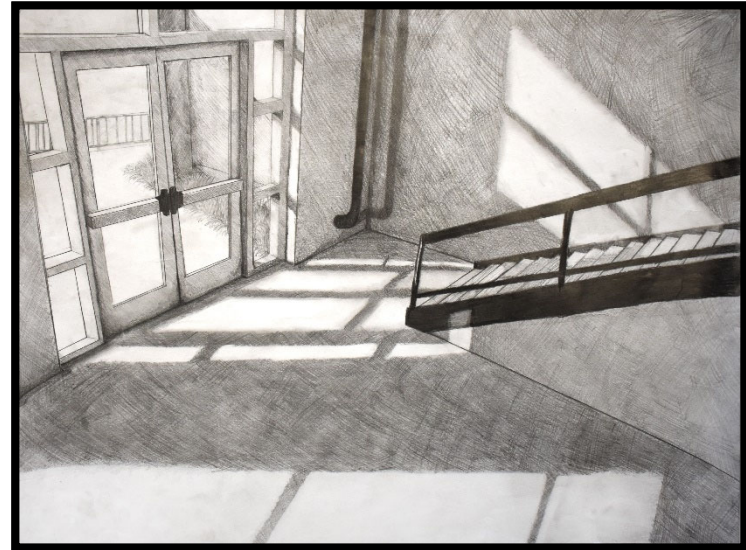
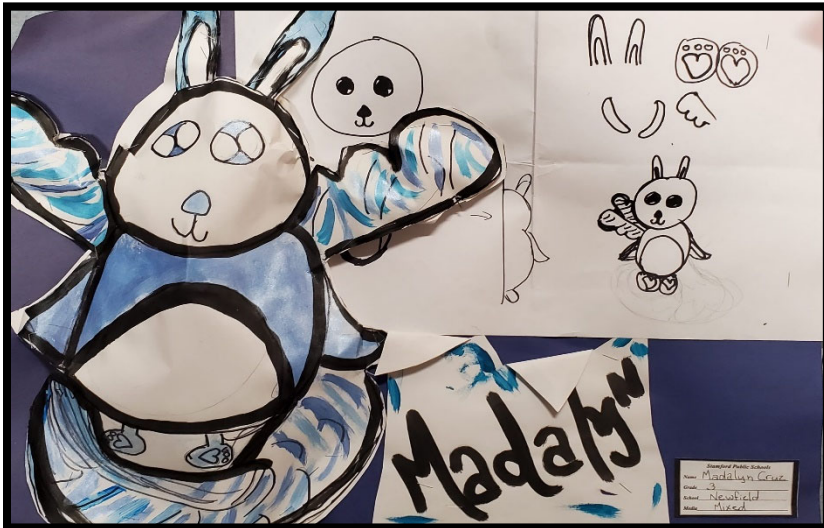


**Kyhlie Bernat, Grade 10  
Westhill High School**



**Jeison Lopez, Grade 12  
Stamford High School**

# Appendix



**Madlyn Cruz, Grade 3  
Newfield Elementary School**



**Shira Lowenstein, Grade 7  
Rippowam Middle School**

**STAMFORD PUBLIC SCHOOLS****Food Service Fund****Board of Education 2022-23 Budget - February 23, 2022**

	<b>2017-18</b>	<b>2018-19</b>	<b>2019-20</b>	<b>2020-21</b>	<b>2021-22</b>	<b>2022-23</b>
	<b>Actual</b>	<b>Actual</b>	<b>Actual</b>	<b>Actual</b>	<b>Projection</b>	<b>Budget</b>
<b>Revenues</b>						
Intergovernmental - NSL & Breakfast	\$5,153,378	\$5,261,661	\$4,908,013	\$6,163,703	\$9,371,419	\$6,805,246
Charges for Services - Ala Carte, Paid Meals	\$1,569,739	\$1,546,843	\$975,979	\$1,476	\$1,513	\$1,483
Interest and Dividends	\$386	\$980	\$887	\$2	\$2	\$2
Other-Supper Program	\$128,632	\$133,111	\$445,655	\$26,360	\$27,019	\$26,492
Value of Donated Commodities						
<b>Total</b>	<b>\$6,852,135</b>	<b>\$6,942,595</b>	<b>\$6,330,534</b>	<b>\$6,191,541</b>	<b>\$9,399,953</b>	<b>\$6,833,223</b>
<b>Operating Expenditures</b>						
Vendor Operations	\$6,272,073	\$5,888,503	\$5,545,434	\$5,420,785	\$6,643,928	\$5,665,414
Value of Donated Commodities			\$418,479	\$458,779	\$697,537	\$506,531
Other	\$29,121	\$421,741				
<b>Net Operating Profit</b>	<b>\$550,941</b>	<b>\$632,351</b>	<b>\$366,621</b>	<b>\$311,977</b>	<b>\$2,058,488</b>	<b>\$661,279</b>
<b>Other Program Expenses</b>						
Custodial Salaries	\$500,000	\$750,000	\$0	\$0	\$0	\$600,000
Gas Non-Heat	\$92,162	\$99,903	\$0	\$0	\$0	\$100,000
Repairs & Maintenance	\$71,345	\$84,195	\$78,164	\$88,998	\$93,448	\$98,120
Equipment	\$62,464	\$26,891	\$79,824	\$71,100	\$74,655	\$78,388
<b>Total Surplus/Deficit</b>	<b>(\$175,030)</b>	<b>(\$328,637)</b>	<b>\$208,633</b>	<b>\$151,879</b>	<b>\$1,890,385</b>	<b>(\$215,229)</b>
<b>Fund Balance</b>	<b>\$465,014</b>	<b>\$136,377</b>	<b>\$345,010</b>	<b>\$496,888</b>	<b>\$2,387,274</b>	<b>\$2,172,045</b>

**STAMFORD PUBLIC SCHOOLS**  
**School Building Use Fund**  
**Board of Education 2022-23 Budget - February 23, 2022**

	2017-18	2018-19	2019-20	2020-21	2021-22 P	2022-23 B
<b>Fund Bal 7/1</b>	\$ 378,560	\$ 195,661	\$ 22,527	\$ 71,552	\$ 71,552	\$ 75,339
<b>Revenues</b>	\$771,349	\$714,774	\$496,382	\$242,897	\$291,476	\$320,624
<b>Expenses:</b>						
<b>Custodial O/T, Salary, Security, Other</b>	\$673,570	\$614,760	\$447,357	\$242,897	\$262,689	\$288,958
<i>Repair/Maint:</i>						
<i>Fences Repair</i>						
<i>Fields</i>						
<i>Flooring</i>						
<i>Other **</i>						
<i>Repairs &amp; Maintenance</i>	\$280,677	\$273,148	\$0	\$0	\$25,000	\$25,000
<i>Tennis Courts</i>						
<i>WHS Door Replacement</i>						
<i>WHS Dugouts</i>						
<b>Subtotal Repair &amp; Maintenance:</b>	<b>\$280,677</b>	<b>\$273,148</b>	<b>\$0</b>	<b>\$0</b>	<b>\$25,000</b>	<b>\$25,000</b>
<b>Total Expenses</b>	<b>\$954,248</b>	<b>\$887,908</b>	<b>\$447,357</b>	<b>\$242,897</b>	<b>\$287,689</b>	<b>\$313,958</b>
<b>\$ Change in Fund Balance</b>	<b>(\$182,899)</b>	<b>(\$173,134)</b>	<b>\$49,025</b>	<b>\$0</b>	<b>\$3,788</b>	<b>\$6,666</b>
<b>Fund Bal 6/30</b>	<b>\$195,661</b>	<b>\$22,527</b>	<b>\$71,552</b>	<b>\$71,552</b>	<b>\$75,339</b>	<b>\$82,006</b>

**2022-23 BUDGET OF THE STAMFORD PUBLIC SCHOOLS  
BUDGET HIGHLIGHTS - HEALTH INSURANCE**

	<b>2020-21 Actual</b>	<b>2021-22 Budget</b>	<b>2022-23 Budget</b>	<b>Comments</b>
Teachers	1,308	1,251	1,326	
Administrators	45	65	73	
Security	31	26	28	
Paraeducators	313	294	298	
Retirees		51		
<b>Subtotal Administered by BOE</b>	<b>1,697</b>	<b>1,687</b>	<b>1,725</b>	<b>Feb 2022 Enrollment of 1,663 plus expected enrollment of new positions (75%)</b>
City Allocation	215	215	215	
<b>Total Enrollment</b>	<b>1,912</b>	<b>1,922</b>	<b>1,940</b>	
H.S.A. Contributions	\$0	\$0	\$0	
Administrative Fees	\$36,211,050	\$39,643,220	\$42,660,426	SPP Medical with 8.% increase; new positions
Stop Loss	\$0	\$0	\$0	
Dental - Cigna	\$2,377,885	\$2,321,457	\$2,454,847	Per Gallagher
Prescription Drugs	0	\$0	\$0	
Life and LTD Insurance	\$257,909	\$264,590	\$264,590	Per Gallagher
HMO Premiums	\$0	\$0	\$0	
Cross Charge from City	\$5,106,191	\$4,556,394	\$4,920,906	8% increase pending more information
ACA Taxes and Fees	\$0	\$23,000	\$23,000	
Other	\$42,552	\$145,000	\$73,131	Includes Gallagher Benefits, 403B, 1095 svc
<b>Total Gross Cost</b>	<b>\$43,995,587</b>	<b>\$46,953,661</b>	<b>\$50,396,900</b>	
Revenue Offsets				
Premium Cost Sharing	(\$7,400,907)	(\$7,532,212)	(\$8,573,064)	Based on trend
Grant Offset	(\$3,835,627)	(\$5,785,847)	(\$5,062,424)	
Claims Reserve	\$0	\$0	\$0	
<b>Total Net Cost</b>	<b>\$32,759,053</b>	<b>\$33,635,602</b>	<b>\$36,761,412</b>	

**\*\*= Retiree Claims, Fees and Payments were moved to the 231 OPEB account**

**STAMFORD PUBLIC SCHOOLS**  
**Internal Service Funds Summary**  
**Board of Education 2022-23 Budget - February 23, 2022**

<b>Fund</b>	<b>Description</b>	<b>6/30/2018 End Bal</b>	<b>6/30/2019 End Bal</b>	<b>6/30/2020 End Bal</b>	<b>6/30/2021 End Bal</b>	<b>6/30/2022 Proj Bal</b>	<b>6/30/2023 Proj Bal</b>
<b>38</b>	BOE Food Service Program	\$465,014	\$136,777	\$345,010	\$496,888	\$2,387,274	\$2,172,045
<b>51</b>	BOE School Building Use Fund	\$195,661	\$22,527	\$71,552	\$71,552	\$75,339	\$82,006
<b>50</b>	BOE Continuing Education	\$114,675	\$121,995	\$276,851	\$276,851	\$391,345	\$403,085
<b>52</b>	BOE Energy Reserve	\$201,840	\$0	\$0	\$0	\$0	\$0
<b>93</b>	BOE Insurance Claims Reserve	\$2,490,645	\$1,084,808	\$1,087,989	\$1,135,321	\$835,321	\$835,321
<b>93</b>	Incurred But Not Reported claims (IBNR)	\$60,421	\$0	\$0	\$0	\$0	\$0

## Acronyms – 2022-23

<b>AAC</b>	Assistive Augmentative Communication	<b>ERIP</b>	Early Retirement Incentive Plan	<b>OSS</b>	Office Support Specialist
<b>AC</b>	Academically Challenged	<b>ES</b>	Elementary Schools	<b>PCS</b>	Premium Cost Sharing
<b>ABM</b>	Current maintenance Vendor	<b>ESL</b>	English as a Second Language	<b>PD</b>	Professional Development
<b>AITE</b>	Academy of Information Technology & Engineering	<b>ESY</b>	Extended School Year	<b>PLC</b>	Professional Learning Communities
<b>ALTA</b>	Aspiring Leadership Through Action	<b>FCIAC</b>	Fairfield County Interscholastic Athletic Conference	<b>PLP</b>	Pre-Vocational Learning Program at Westhill High School
<b>AP</b>	Accounts Payable	<b>GE</b>	GE Foundation Developing Futures Program	<b>PP</b>	Per Pupil
<b>ARC</b>	Annual Retirement Contribution	<b>GED</b>	General Equivalency Diploma	<b>PPO</b>	Preferred Provider Organization
<b>ARRA</b>	American Recovery and Reinvestment Act	<b>GWI</b>	General Wage Increase	<b>PPS</b>	Pupil Personnel Services
<b>ANCHOR</b>	Alternate Education program at Harbor Landing	<b>HMO</b>	Health Maintenance Organization	<b>Pre-K</b>	Pre-Kindergarten
<b>ASD</b>	Autism Spectrum Disorder	<b>HRIS</b>	Human Resource Information System	<b>READ-180</b>	Comprehensive Reading Intervention Education Program
<b>BESB</b>	Board of Education and Services for the Blind	<b>HS</b>	High Schools	<b>RFP</b>	Request for Proposal
<b>BEST</b>	used to be the Mentor Program from state for new teachers, it is now called TEAM	<b>HVAC</b>	Heating, Ventilating, and Air Conditioning	<b>RISE</b>	Resilience, Inspiration and Success in Education
<b>BOE</b>	Board of Education	<b>IAI</b>	Individuals Achieving Independence	<b>RLC</b>	Remedial Learning Class
<b>BOF</b>	Board of Finance	<b>IB</b>	International Baccalaureate Program at Rogers & Rippowam	<b>ROTC</b>	Reserve Officers' Training Corps
<b>BOR</b>	Board of Representatives	<b>IBM</b>	Individual Behavior Management	<b>SAT</b>	Reasoning Test (formerly Scholastic Aptitude Test/Scholastic Assessment Test)
<b>C&amp;I</b>	Curriculum & Instruction	<b>IBNR</b>	Incurred but Not Reported Insurance Claims	<b>SAU</b>	Stamford Administrator's Unit
<b>CABE</b>	Connecticut Association of Boards of Education	<b>IDEA</b>	Individuals with Disabilities Education Act	<b>SDIP</b>	Strategic District Improvement Plan
<b>CAFR</b>	Comprehensive Annual Financial Report	<b>IED</b>	Individualized Education Development a resource class at the high school level	<b>SEA</b>	Stamford Education Association
<b>CAPT</b>	Connecticut Academic Performance Test	<b>IEP</b>	Individualized Education Plan	<b>SPP</b>	State Partnership Plan
<b>CASBO</b>	Connecticut Association of School Business Officials	<b>ILNC</b>	Individualized Learning Needs Coach	<b>SHS</b>	Stamford High School
<b>CEDF</b>	Community Economic Development Fund	<b>IT</b>	Information Technology	<b>SPS</b>	Stamford Public Schools
<b>CEU</b>	Continuing Education Units	<b>K</b>	Kindergarten	<b>STEM</b>	Science, Technology, Engineering, Mathematics
<b>CHSCA</b>	Connecticut High School Coaches Association	<b>LAP</b>	Learning Assistance Program	<b>STEPS</b>	Now ASD – Autism Spectrum Disorder
<b>CIAC</b>	Connecticut Interscholastic Athletic Conference	<b>LC/INC</b>	Learning Center/Inclusion	<b>TALK</b>	Teaching Active Language & Knowledge. Program for the Hearing Impaired
<b>CMT</b>	Connecticut Mastery Test	<b>LEAP</b>	Lockwood Educational Advancement Program	<b>TBD</b>	To be determined
<b>COG</b>	It is the academic team at the middle school level: Math, Language Arts, Science, Social Studies	<b>LEP</b>	Limited English Proficiency	<b>TEAM/BLC</b>	Teaching Educational Activities for Multiple Handicapped/ Basic Learning Class
<b>Co-Teach</b>	Two teachers in one classroom, generally regular education and special education or bilingual	<b>LSS</b>	Language Support Specialist	<b>TEAM/BRC</b>	Teaching Educational Activities for Multiple Handicapped/ Basic Remedial Class
<b>CPR</b>	Cardiopulmonary Resuscitation	<b>LTD</b>	Long-term Disability	<b>TOSA</b>	Teacher on Special Assignment
<b>CSR</b>	Class Size Reduction	<b>MAA</b>	Mathematical Association of America	<b>TRB</b>	Teacher's Retirement Board
<b>ECS</b>	Education Cost Sharing	<b>MER</b>	Minimum Expenditure Requirement	<b>UAW</b>	United Auto Workers
<b>ED001</b>	End of Year School Report	<b>MOA</b>	Memorandum of Agreement	<b>VoAG</b>	Vocational Agriculture Program at Westhill High School
<b>ED</b>	Educationally Disadvantaged	<b>MS</b>	Middle School	<b>WHS</b>	Westhill High School
<b>EFS</b>	Educational Finance System	<b>NCLB</b>	No Child Left Behind		
<b>EID</b>	Energy Improvement District	<b>OPEB</b>	Other Post-Employment Benefit		
<b>EL</b>	English Learners Program	<b>OFCE</b>	Office of Family & Community Engagement		
<b>E-Rate</b>	Federal Universal Service Fund Grant to Schools and Libraries	<b>OPM</b>	Office of Policy & Management		