

August 9 Special Election

Capital Project Levy
& Construction Bonds



St. Louis Park
Public Schools



May 10, 2022 School Board Study Session

Items to cover

1. Special election details
2. Bond project details
3. Communication plan





Special Election Details



St. Louis Park
Public Schools

May 10, 2022 School Board Study Session

Two Questions

1. **Capital Project Levy for technology**
 - a. renew for 10 years
2. **Building Bond focused on items that**
 - a. enhance the daily lived experience of students
 - b. stabilize costs and conserve energy
 - c. maintain core operations
 - d. improve safety and security



St. Louis Park
Public Schools

May 10, 2022 School Board Study Session

Total Tax Impact

- Focus on items that
 - enhance the daily lived experience of students
 - stabilize costs and conserve energy
 - maintain core operations
 - improve safety and security



	Annual Tax Impact (\$331,800 home)	Monthly Tax Impact (\$331,800 home)
Bond Projects	\$209	\$17.42
Capital Project Levy	\$18	\$1.50
Total	\$227	\$18.92



Capital Project Levy for Technology



Background

- Funds all student/staff/district technology equipment, infrastructure and personnel
- authorized in November 2013 for taxes payable in 2014
- voter-approved for ten years
 - through taxes payable in 2023 (fall 2022 levy)
- 3.812% of net tax capacity

Recommended Renewal

- 10-year maximum
- Increase levy by \$500,000 (to \$3.5 million)
- Establish new tax rate (currently 3.812%)



St. Louis Park
Public Schools

May 10, 2022 School Board Study Session

Draft Ballot Language: Capital Project Levy

School District Question 1 Approval of Capital Project Levy for Technology

The board of Independent School District No. 283 (St. Louis Park Public Schools), Minnesota has proposed a capital project levy authorization for technology in the maximum amount of 4.287% times the net tax capacity of the school district. A portion of this new authorization, \$3,063,578, would replace the school district's existing authorization which is scheduled to expire after taxes payable in 2023, would raise approximately \$3,563,578 for taxes first levied in 2022, payable in 2023, and would be authorized for ten (10) years. The estimated total cost of the projects to be funded over that time period is approximately \$35,635,780. The proposed authorization will provide funds for the acquisition, installation, support and maintenance of software, technology, technology systems and infrastructure, and to pay the costs of technology related personnel and training.

Shall the capital project levy authorization to fund technology proposed by the board of Independent School District No. 283 (St. Louis Park Public Schools), Minnesota be approved?

**BY VOTING “YES” ON THIS BALLOT QUESTION, YOU ARE VOTING
FOR A PROPERTY TAX INCREASE**



**St. Louis Park
Public Schools**

May 10, 2022 School Board Study Session

Building Bond Projects (\$millions)

2017 Carryover Projects		\$35.1
Continuing Operations	Deferred Maintenance	\$44.4
	Building Renovations	\$21.5
	Security	\$14.5
	Playground, track and field	\$19.5
Project Total		\$135.0

Carryover Projects \$35.1 Million 26% of total	Continuing Operations \$99.9 million (74% of total)			
	Deferred Maintenance \$44.4 Million 33% of total	Building Renovations \$21.5 Million 16% of total	Security \$14.5 Million 11% of total	Playgrounds, Track, Field \$19.5 Million 14% of total



Draft Ballot Language: Bond Issue



School District Question 2 **Approval of General Obligation School Building Bonds**

Shall the board of Independent School District No. 283 (St. Louis Park Public Schools), Minnesota be authorized to issue general obligation school building bonds in an aggregate amount not to exceed \$136,000,000 for the acquisition and betterment of school sites and facilities?

**BY VOTING “YES” ON THIS BALLOT QUESTION, YOU ARE VOTING
FOR A PROPERTY TAX INCREASE**



Bond Project Details



St. Louis Park
Public Schools

May 10, 2022 School Board Study Session

How to Learn More

District Information Campaign underway!

COMING SOON!

Vote YES Get-Out-the-Vote Campaign

Learn more about Building for Sustainable Excellence by:

- Visiting slpschools.org.org/BuildingSustainableExcellence
- Submitting a question to communications@slpschools.org
- Following #BuildingSustainableExcellence online



Upcoming Community Meetings

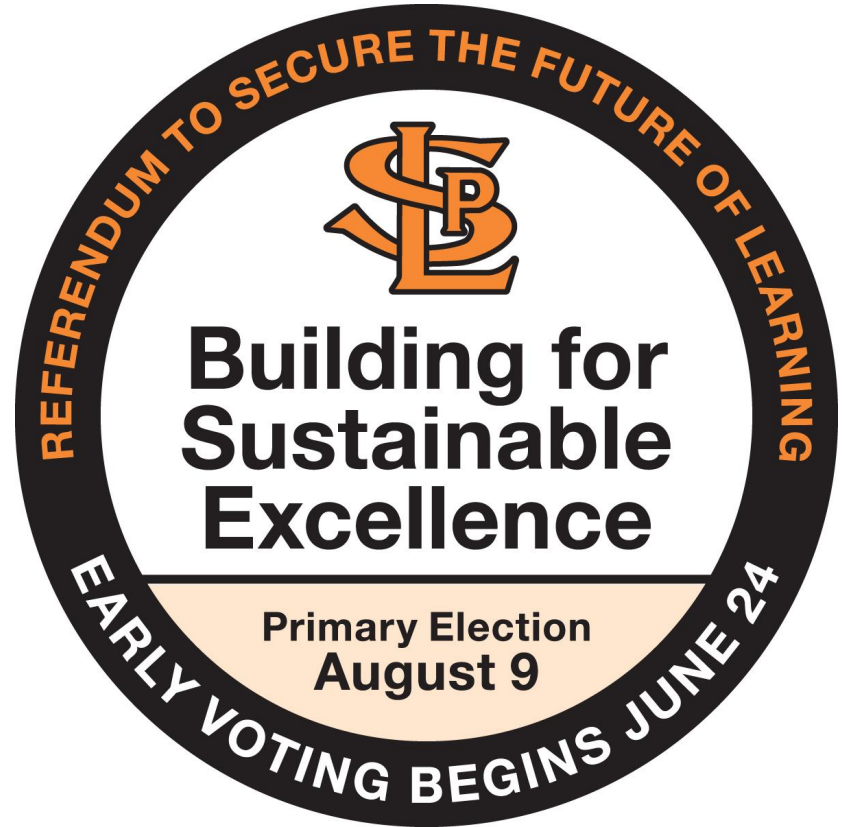


Attend a Community Meeting to learn more:

- Wednesday, May 18, 6 p.m. / HS Room C350
- Thursday, May 26, 7:30 p.m. / HS Room C350
 - Note: change from original announcement
- Monday, June 6, 7 p.m. / Virtual - Zoom Link posted at slpschools.org

** All Community Meetings will be recorded
for YouTube replay*

Questions



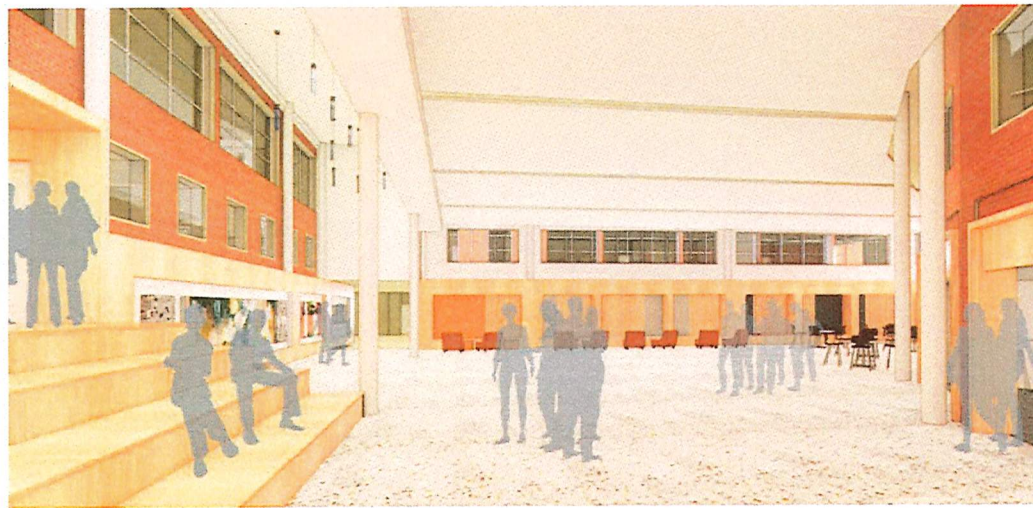
St. Louis Park
Public Schools

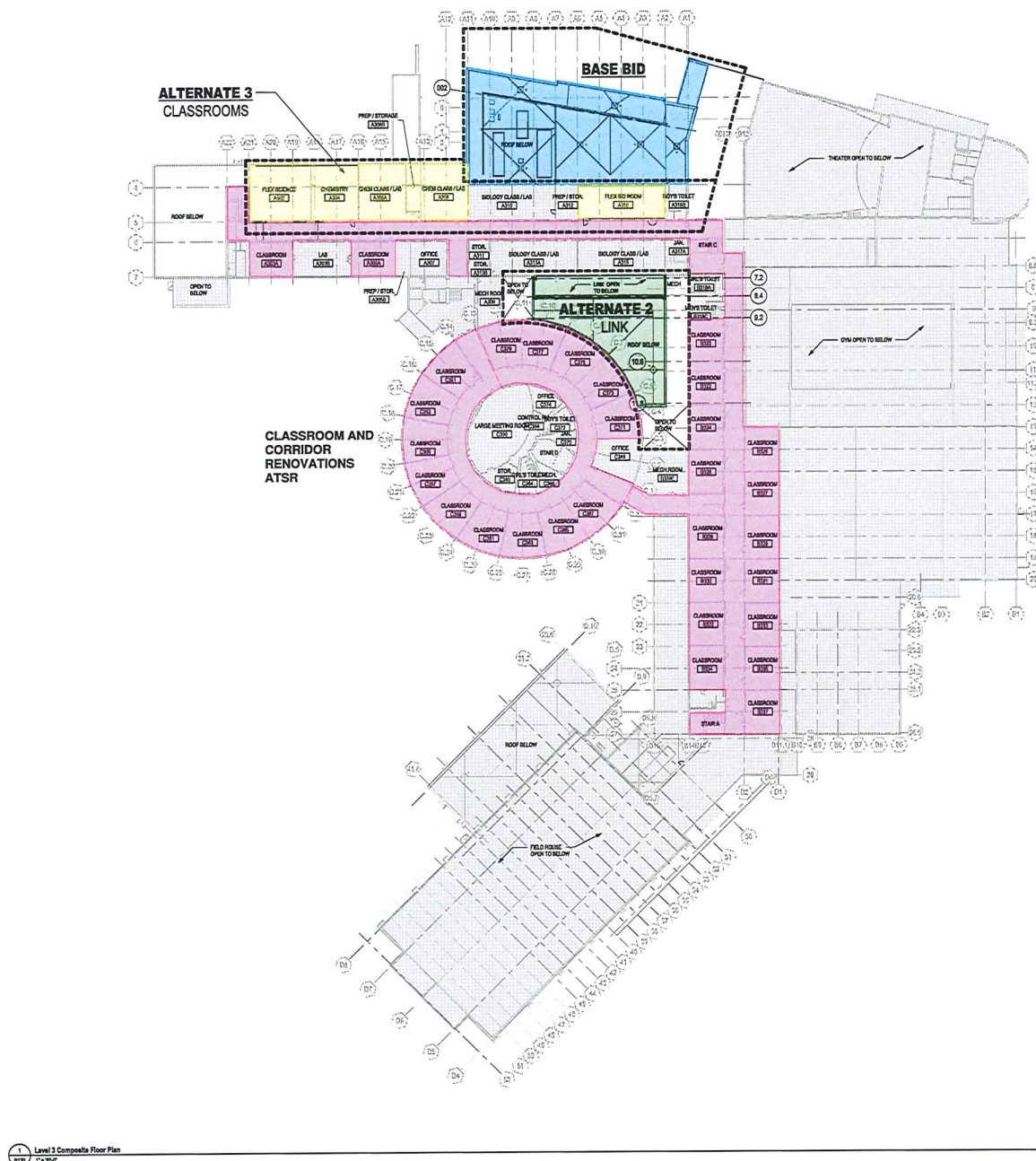
May 10, 2022 School Board Study Session

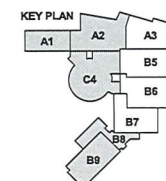


St. Louis Park Public Schools

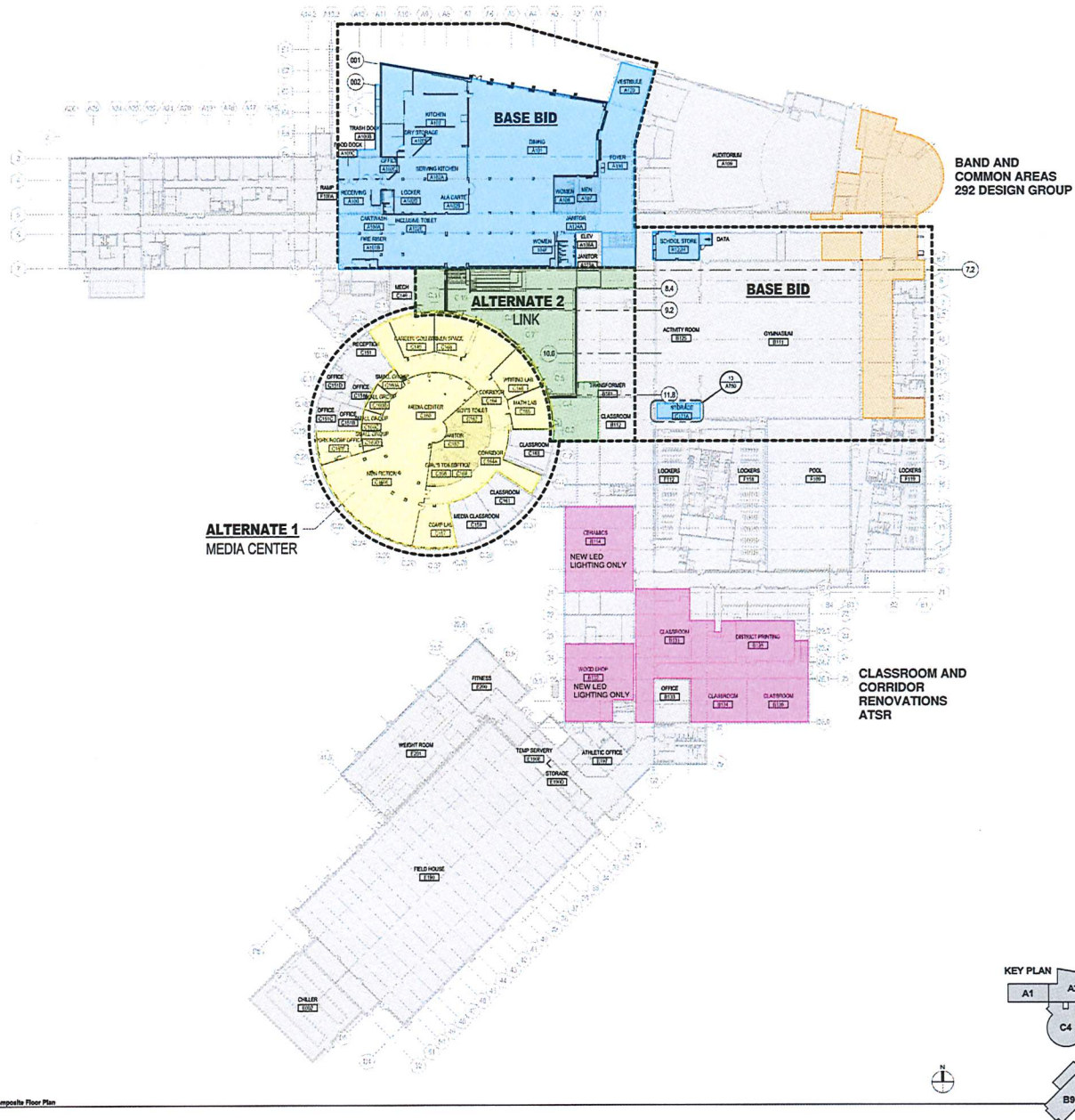
St. Louis Park High School
Additions/Renovations/Link/Commons







1 Level 2 Composite Floor Plan
R120 1" = 30'-0"



Registration
Name: John G. Pfleger
License No.: 20926

I hereby certify that this plan, specification, or report was prepared by me or under my direct supervision and that I am a duly Licensed Architect under the laws of the state of Minnesota.

Signature: *[Signature]*
Print Name: _____
Date: _____ Description: _____

Project Information
Project: _____ CO: _____ Date: 6/20/2011
Project No.: 214290 POC: JAC
St. Louis Park HS Additions / Renovations

Sheet Title
LEVEL 1 COMPOSITE FLOOR PLAN

Sheet Number: _____ Current Revision: _____

R110

© 2011 Cunningham Inc.

Registration
Name: John G. Pfleger
License No.: 20926

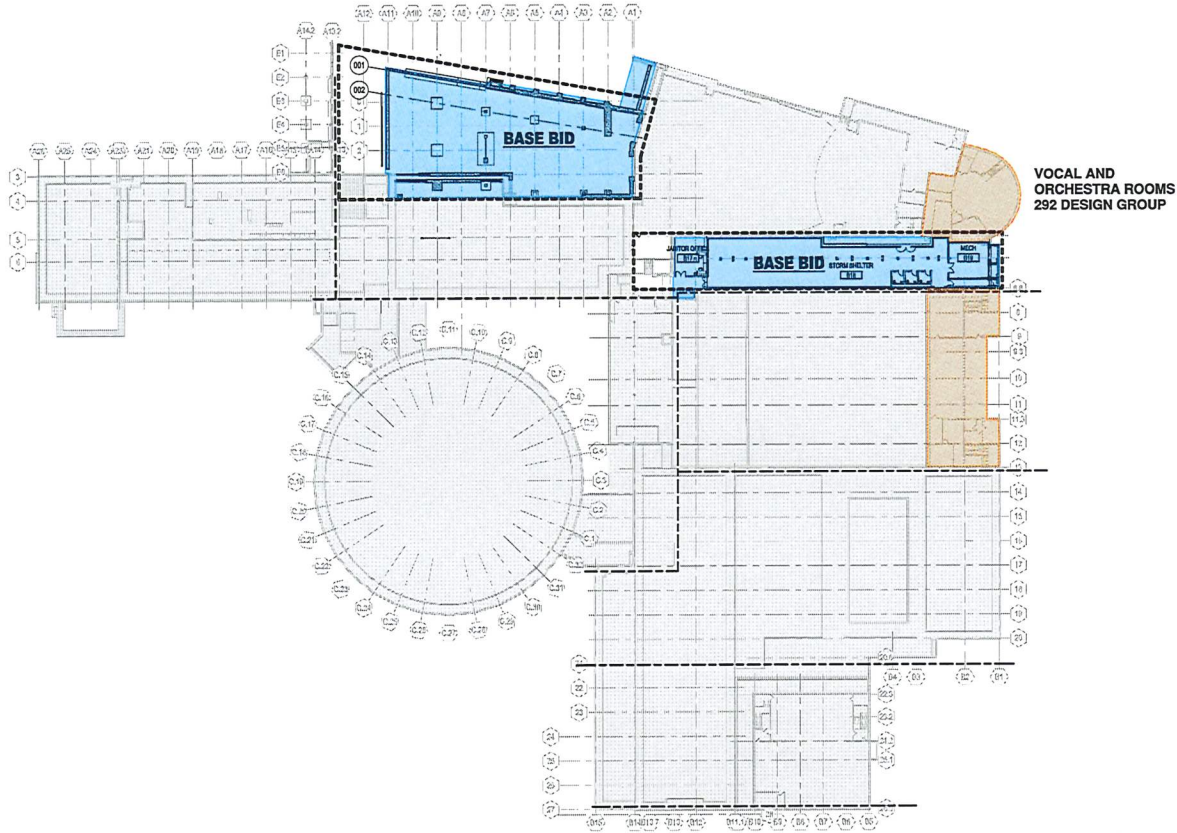
I hereby certify that this plan, specification, or report was prepared by me or under my direct supervision and that I am a duly Licensed Architect under the laws of the state of Minnesota.

Signature: *[Signature]*
Print Name: _____
Date: _____ Description: _____

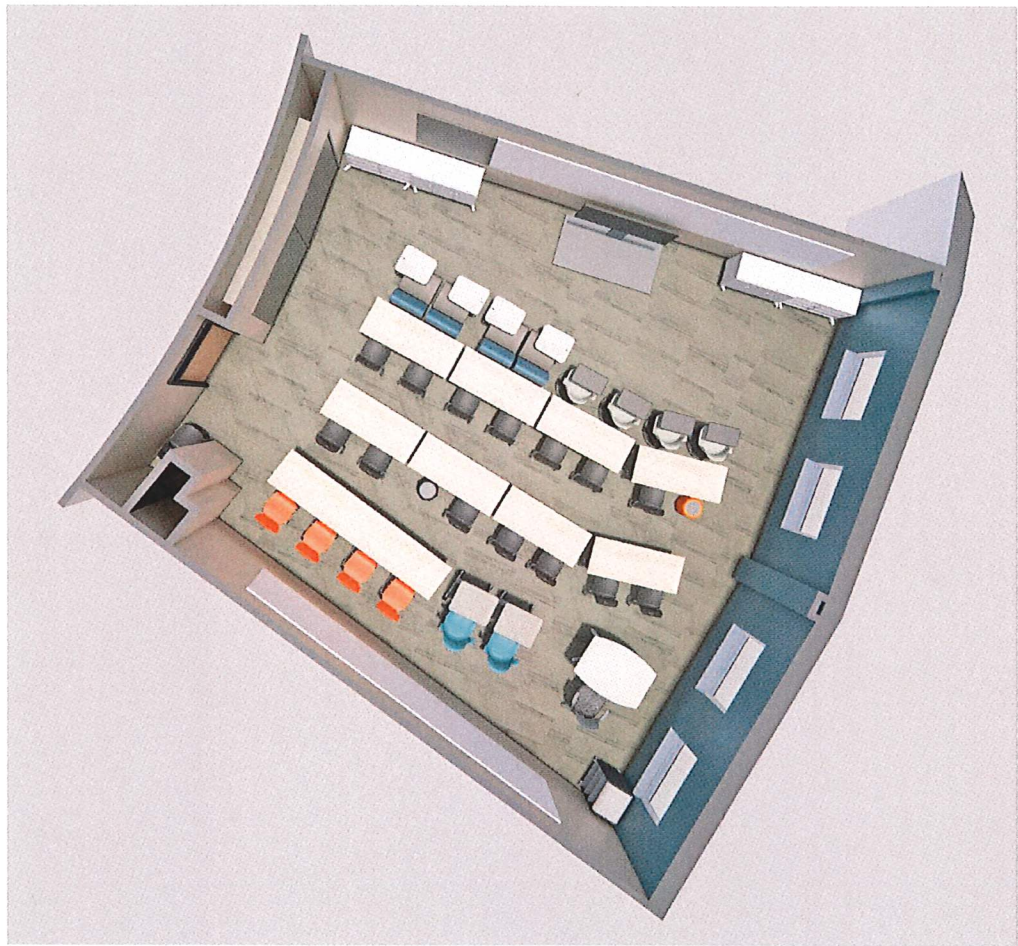
Project Information
Phase: CD Date: 02/03/20
Project No.: 21-0002 POC/ACD
St. Louis Park HS Additions / Renovations

Sheet Title
BASEMENT COMPOSITE FLOOR PLAN

Sheet Number: **R100**
Current Revision: _____
Revised: _____



Level 3 Basement Composite Floor Plan
1/10 17x30'0"









St. Louis Park Public Schools

St. Louis Park High School
Kitchen and Cafeteria



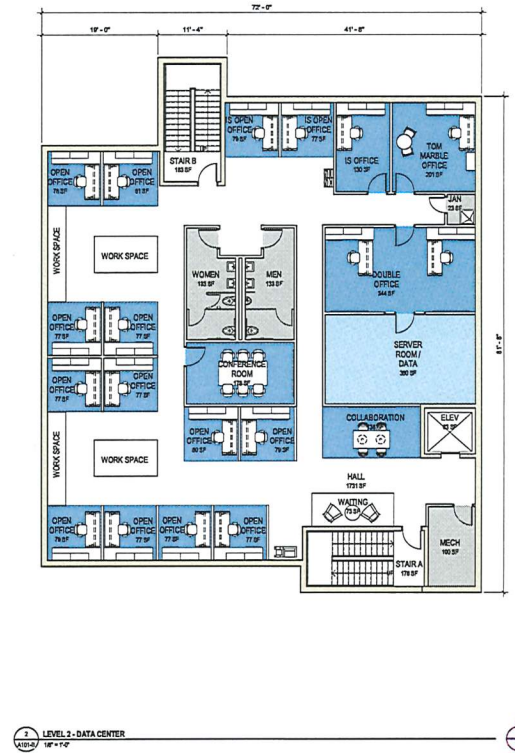
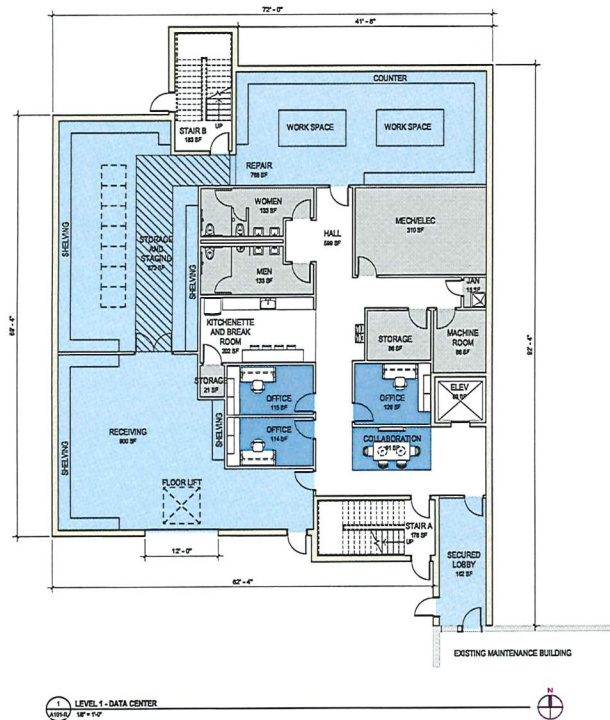




St. Louis Park Public Schools

Technology Data Center and Maintenance Garage





GROSS BUILDING AREA	
AREA	SF
LEVEL 1 - DATA CENTER	5728 SF
LEVEL 2 - DATA CENTER	5618 SF
	11344 SF

PRELIMINARY NOT FOR CONSTRUCTION

Revisions
No. Date Description

Project Information
Name Date
Project No. (PCL) (M)

St. Louis Park Public Schools -
Maintenance Building and Data
Center

Sheet Title
FLOOR PLANS - DATA
CENTER

Sheet Number Current Revision

A101-B

© 2015 Cunningham Properties, Inc.



St. Louis Park Public Schools

Central Community Center
Pool, Gyms, Central Office & Training Center

PRELIMINARY NOT FOR
CONSTRUCTION

Revisions
No. Date Description

Project Information
Phase: Date:
Project No.: P/C/ACD
ST. LOUIS PARK CENTRAL
BUILDING POOL, GYMS, AND
TRAINING CENTER

Sheet Title
FINISH FLOOR PLAN -
LEVEL 1

Sheet Number: A710
Consult Revision:
Drawn by: M. Thompson / M. Thompson

New Roof top AHU to serve
small gym
New Sport Court Floor
1 Basketball court
1 Volleyball court
1 Pickleball court
1 Badmitten court
2 Four Square courts
2 Hop Scotch stations
2 New Retractable
basketball hoops
New Wall Pads at end walls
Divider Curtain middle court
New Lighting

New Roof top AHU to split main gym and
training center space.
5 New windows in large gym space to
replace existing windows in same place
1 New Sprung Floor System with Matt
1 New Balance Beam 2 Reused
2 Reused Pair of Uneven Bars
1 Reused Vault, Spring Board and Runway
1 Reused Tumb Track

New Sport Court Floor
New Wall Pads
New ceilings lights and
mechanical systems

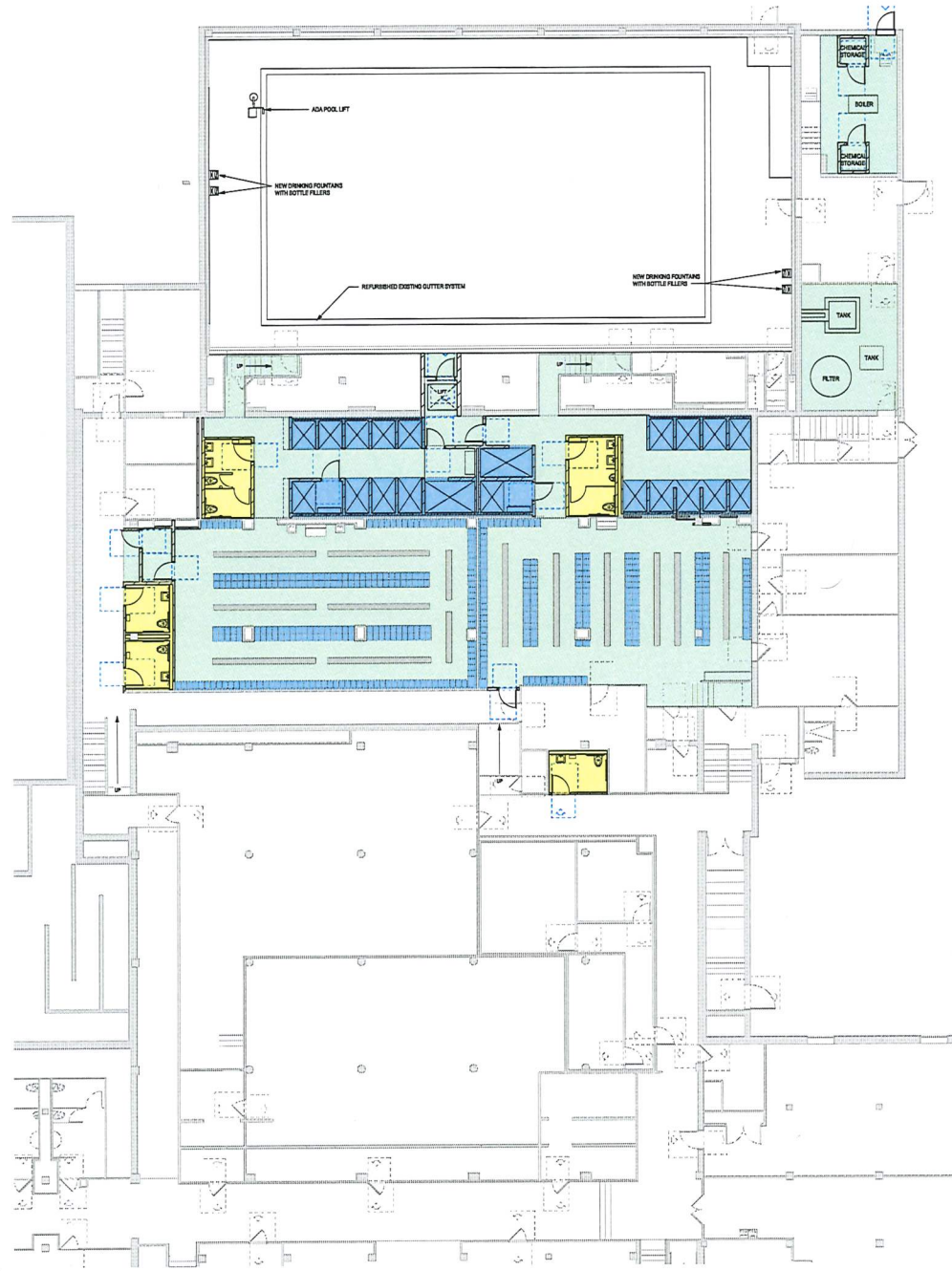
Board Room Configuration
14 Board member chairs 7 tables
1 Record keeper chair 1 table
1 Lectum
99 Guest chairs
New ceilings, lights and
mechanical systems

Training Room Configuration
15 Board member chairs used
8 Board tables used
22 Half round tables used
1 Lectum
69 Guest chairs used
New ceilings, lights and
mechanical systems

2 Training Room Floor Plan
10' x 10'

1 Finish - Level 1
10' x 10'

WOMENS LOCKER ROOM AND SHOWERS
 NEW ADA ACCESSIBLE ENTRY INTO LOCKER ROOM SPACE
 2 NEW SINGLE USE UNISEX RESTROOMS
 1 NEW 2 PERSON RESTROOM IN SHOWER AREA
 1 NEW FAMILY SHOWER ROOM
 1 NEW SINGLE USE ADA SHOWER STALL
 8 NEW SINGLE USE SHOWER STALLS
 NEW POURED FLOORING THROUGHOUT LOCKER ROOM AND SHOWER AREA
 PAINT AND REFURBISH EXISTING LOCKERS
 COMMON ADA ACCESSIBLE LIFT TO POOL DECK
 NEW CEILINGS AND LIGHTING



NEW POOL CHEMICAL STORAGE ROOMS
 NEW POOL BOILER
 NEW EXTERIOR BOILER ROOM DOOR
 REFURBISHED POOL IN SLAB WATER TANK
 NEW POOL SAND FILTER SYSTEM

MENS LOCKER ROOM AND SHOWERS
 NEW ADA ACCESSIBLE ENTRY INTO LOCKER ROOM SPACE
 1 NEW SINGLE USE UNISEX RESTROOM
 1 NEW 2 PERSON RESTROOM IN SHOWER AREA
 1 NEW FAMILY SHOWER ROOM
 1 NEW SINGLE USE ADA SHOWER STALL
 9 NEW SINGLE USE SHOWER STALLS
 NEW POURED FLOORING THROUGHOUT LOCKER ROOM AND SHOWER AREA
 PAINT AND REFURBISH EXISTING LOCKERS
 COMMON ADA ACCESSIBLE LIFT TO POOL DECK
 NEW CEILINGS AND LIGHTING

PRELIMINARY NOT FOR CONSTRUCTION

Revisions		
No.	Date	Description

Project Information	
Phase	Date
Project No.	PC/AC
ST. LOUIS PARK CENTRAL BUILDING POOL, GYMS, AND TRAINING CENTER	

Sheet Title
 FINISH FLOOR PLAN - BASEMENT

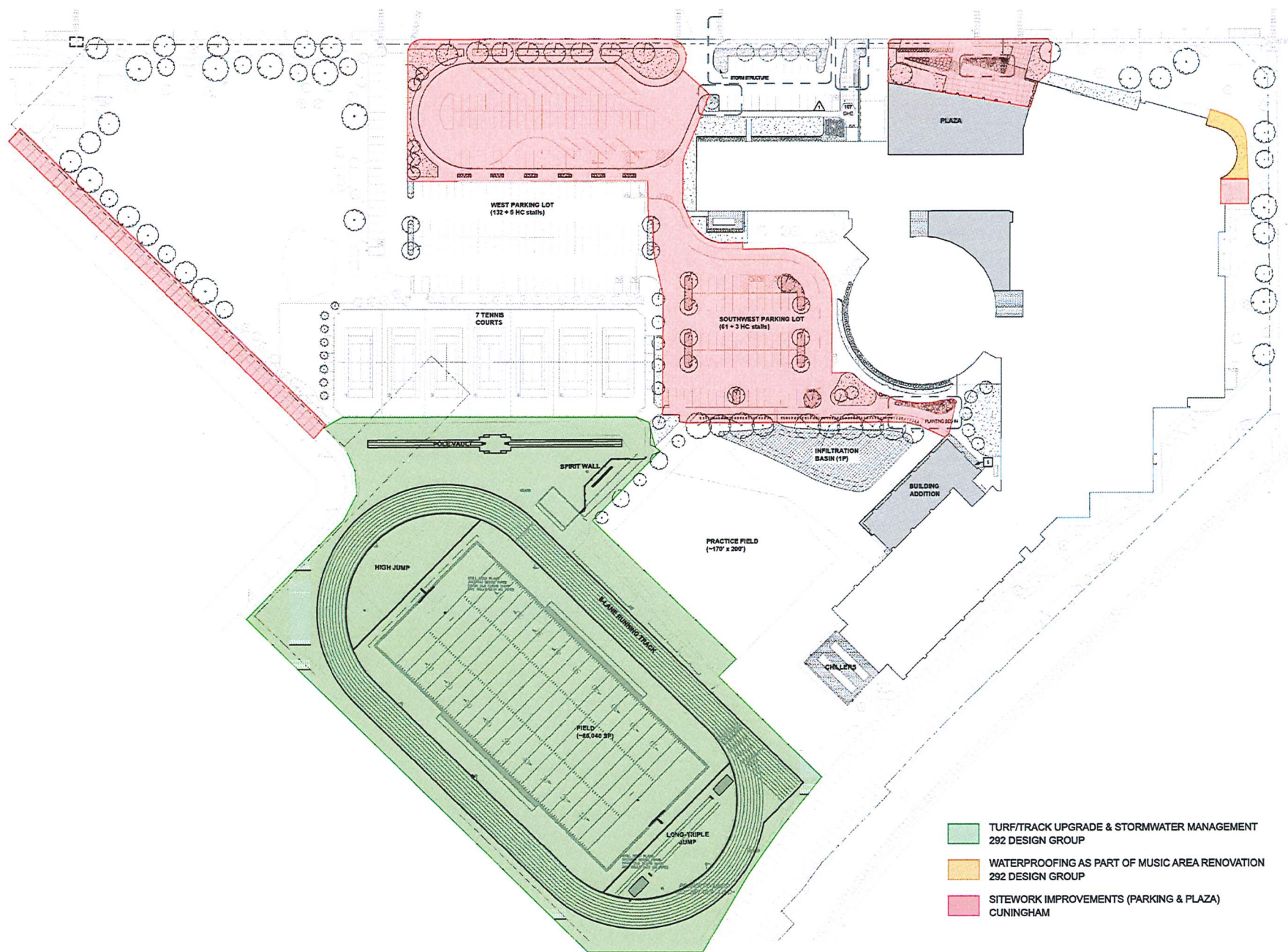
Sheet Number
 A700

1 Finish - Basement
 1/8" = 1'-0"



St. Louis Park Public Schools

St. Louis Park High School Track/Field
Elementary Playgrounds



- TURF/TRACK UPGRADE & STORMWATER MANAGEMENT
292 DESIGN GROUP
- WATERPROOFING AS PART OF MUSIC AREA RENOVATION
292 DESIGN GROUP
- SITEWORK IMPROVEMENTS (PARKING & PLAZA)
CUNNINGHAM

Cunningham
292 Design Group

BOLTON & MENK
Real People. Real Solutions.

ST. LOUIS PARK HIGH SCHOOL
PROPOSED SITEWORK AND
TURF/TRACK UPGRADE

The St. Louis Park - Central Playground is designed for a combination of prescriptive and non-prescriptive play for children between 2 months and 5 years of age. The activities and equipment of the playground offer a diverse, engaging range of challenge and skill level that supports the development of all ages. Between the oversized step-down sandbox, continuous bike path, and rolling play mounds, this dinosaur-themed playground stimulates curiosity, exploration, and imagination for each user. Not only does this playground provide opportunities for growth and learning, it hosts a continual place of fun!

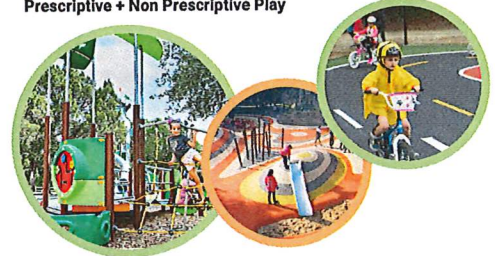


Overall Site Plan



Engaging all types of play

Prescriptive + Non Prescriptive Play



Designing to include all ages and skills



Legend

Play Spaces + Equipment

- 1 2-5 yr. Play Structure
- 2 Accessible See-Saw
- 3 Custom Dinosaur Bench
Custom curved bench featuring a section of netted "hammock" seating
- 4 Play Mounds
With integrated climbing ropes, mountaineering ropes, climb holds, roller slide and tunnel
- 5 Spinners
Seated and standing spinners for a range of play
- 6 Accessible Sandbox
Step down sandbox with digger equipment; elevated sand table and accessible diggers
- 7 Swings
Four sets of swings including: multi-user swing, traditional belt swings, toddler swings, expression swing
- 8 Basketball Hoops
- 9 Chalk Zone + Accessible Surface
Mounted Chalk Board
- 10 Balance Steppers
- 11 Looped Dino-Print Bike Path
- 12 Active Lawn

Materials

Poured - In - Place Rubber Surfacing



The St. Louis Park - PSI Playground encourages all types of play for a range of children 5-11 years old. The playground uses existing site conditions, most notably mature trees and topography, to shape a space that works with the natural environment. Flexible classroom spaces centered around gardening and rain gardens give teachers a chance to bring students outside and learn through sensory experiences. The playground surfacing undulates over mounds and play equipment, activating play with color and movement for year-round fun.



Overall Site Plan



Engaging all types of play

Prescriptive + Non Prescriptive Play



Working with the natural systems



Legend

Classroom Spaces

- 1 Chalkboard/Dry Erase Classroom Wall
Chalkboard/dry erase board with outlet connection
- 2 Terraced Rain Garden Classroom
Wood deck top, concrete steps, flagstone steps
- 3 Rain Garden
Natural water collection and filtration with native perennials and grasses
- 4 Garden Classroom
Large group table, two raised planting beds, spigot connection, edible plantings

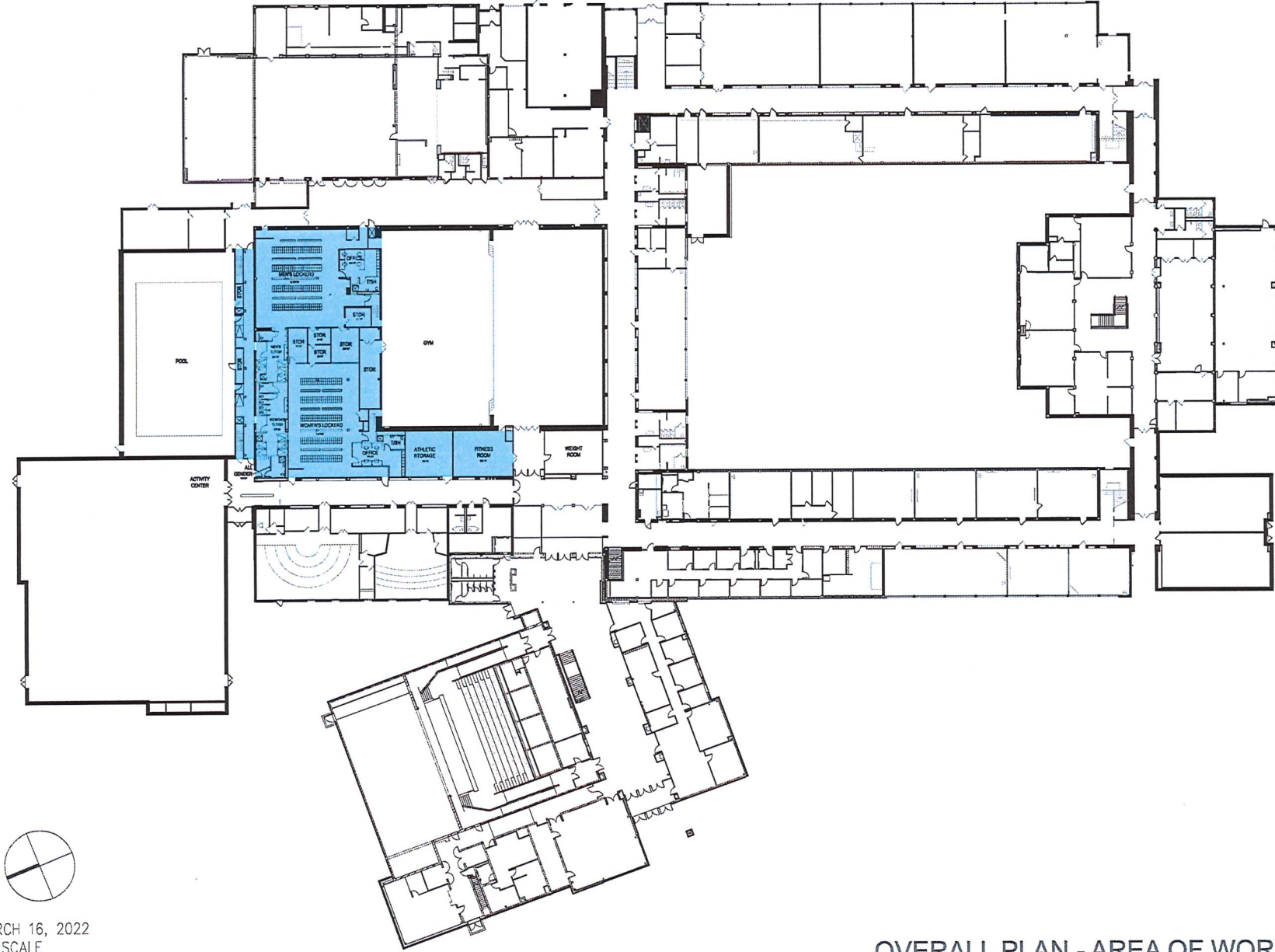
Play Spaces

- 1 Climbing Poles over Mounds
Poles with ladders and climb holds
- 2 Climb Wall to Roller Slide
Rock climbing holds over mound with roller slide down to grade
- 3 Shaded Area
Three benches under colorful shade sail
- 4 Spinners
Seated and standing spinners for a range of play
- 5 Mound with Tunnel
Mound to run up and down with internal tunnel feature
- 6 Climbing Structure
Large free standing climber - see Landscape Structures "Crab Trap"
- 7 Open Play
Flexible open space amongst existing trees



St. Louis Park Public Schools

St. Louis Park Middle School Locker Rooms



MARCH 16, 2022
NO SCALE

OVERALL PLAN - AREA OF WORK

