

Pike Parent University

Educational Webinars for Families

Advocate For Your Student





Poll Question

What are you most interested in learning about?

- 504s and IEPs
- ENL services
- Cummins Behavioral Health Services
- Counseling Services
- 21st Century Scholars After-school Program

Topics

504 and IEP

Counseling
Chayzee Smith

ENL
Elizabeth Landis

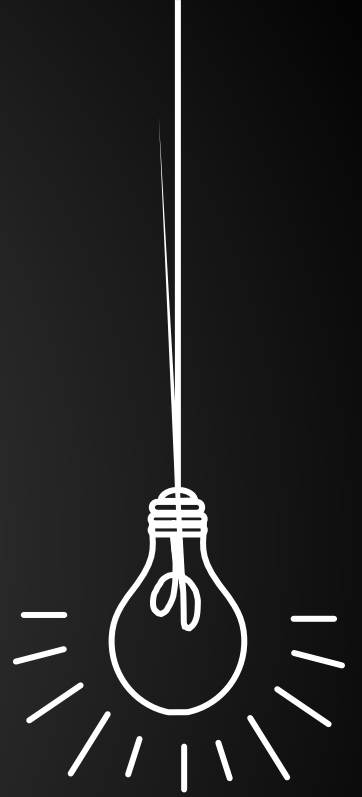
Social Work
Sherma Jackson

**Community Mental
Health Partnership**
Richelle Dumas

21st Century Scholars



504 & IEP



What is a 504?

- 💡 504 plans are formal plans that schools develop to give kids with disabilities the support they need. That covers any condition that limits daily activities in a major way.
- 💡 These plans prevent discrimination. And they protect the rights of kids with disabilities in school. They're covered under Section 504 of the Rehabilitation Act . This is a civil rights law.
- 💡 504 plans aren't part of special education. So, they're different from IEPs. 504 plans and IEPs are covered by different laws and work in different ways. But the end goal is the same: to help students thrive in school.
- 💡 One way 504 plans do that is through accommodations . For example, they might give extended time on tests or the ability to leave the classroom for short breaks. It's less common, but some may also provide services like speech-language therapy or study skills classes.
- 💡 If parents are interested in starting the process for a 504 evaluation, they should contact their building assistant principal at the elementary level, or their building counselor at the secondary level.

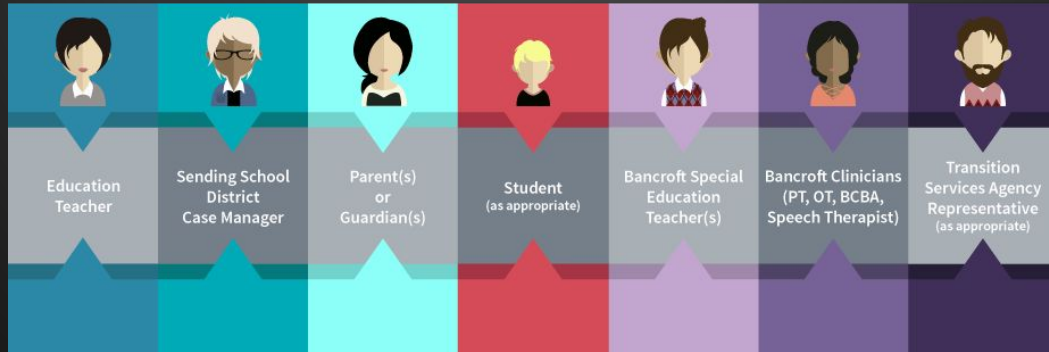
Navigating
the Section
504 Plan

Getting the
accommodations
your child needs.



What is an IEP?

- 💡 IEP stands for Individualized Education Program.
- 💡 An IEP lays out the special education instruction, supports, and services a student needs to thrive in school.
- 💡 IEPs are a part of public education. They're given to eligible kids, ages 3 and up, who attend public school.
- 💡 An IEP is more than just a written legal document (or “plan”). It's a map that lays out the program of special education instruction, supports, and services kids need to make progress and thrive in school.



Rights and Laws



A student's parent or school personnel working with the student may make a referral or request for an educational evaluation. If the parent makes the request, the request must be made verbally or in writing to **licensed personnel**, such as a teacher, principal, or special education director. **It is always a good idea for the parent to put the request in writing.**



Within **10 school days** after the parent makes a request for an educational evaluation, the school must provide the parent with **written notice** responding to the request.



Before the school can conduct the evaluation, the parent must provide written consent.



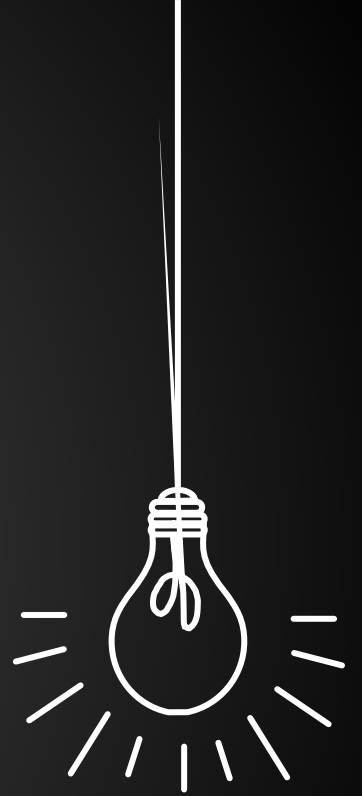
In the event the student fails to make adequate progress after an appropriate period of time, as previously determined by the school and the parent, the school will request an educational evaluation. If the parent gives consent for an educational evaluation, the school has 20 school days from the date it receives the consent to conduct the evaluation and convene the CCC meeting (rather than the 50 school days for other initial educational evaluations).



All information can be found [here](#).



ENL Services Elizabeth Landis



Supporting our Multilingual Learners

The MSD of Pike Township has students who...

Represent 59
countries

Speak 85
languages

Need support in
their development
of the English
language.

Who receives ENL support?

ENL = English as a New Language

We support students who:

Have no
experience
with English

Are bridging
between
English and
their native
language

Are expanding
their English
skills

Speak English
but do not read
or write in
English.

ENL supports students at all levels expand and build their skills in English to ensure the most effective learning environment.

How are services determined?



Home Language Survey

All families fill out a Home Language Survey to determine the students most commonly spoken language.



WIDA Screener

Given based off of the HLS. A shorter version of the WIDA Access



WIDA Access

Given to each English Language Learner (ELL) student early in the 2nd semester.

What services are provided?

ELL teachers offer a variety of services depending on the student's level and age.

Pull-out or
push-in instruction

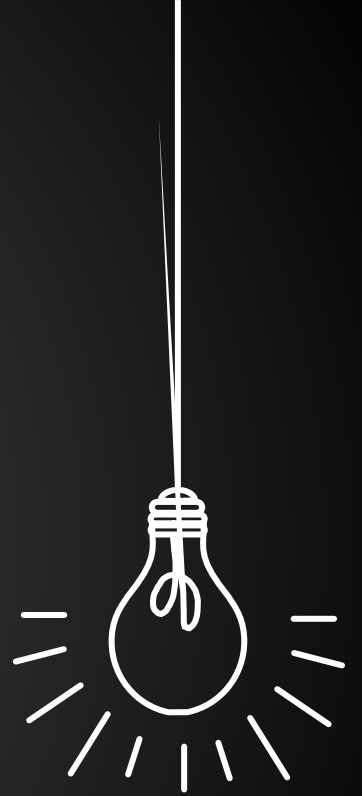
ENL classes and
ILPs (Individual
Learning Plan)

Newcomers
Program

Monitor student
growth



Counseling Chayzee Smith



"School Counselors are there to help students become the best versions of themselves."

- Help students in academic, social/emotional, and career development.
- Success for ALL students using a comprehensive school counseling approach.
- School culture of success for ALL students.
- School counselors help All students.



School Counselor Roles

- Individual academic, social/emotional, and college/career counseling
- Classroom, small group, specialized lessons
- Short-term counseling but long term support
- Referrals for community services
- Collaboration with families/teachers/administrators/community for student success
- Advocacy for students during IEP and other school meetings
- Data analysis to identify student issues, needs, and challenges
- Crisis intervention and support
- Acting as a systems change agent to improve equity and access, achievement and opportunities for all students



Common Issues Students Face

Stress

Anger Management

Social Skills

Anxiety

Depression

Conflict Resolution

Managing Feelings

Grief and Loss

Divorce

Friendship Problems

Self Esteem Issues

Academic Difficulties



What Can Parents Do?

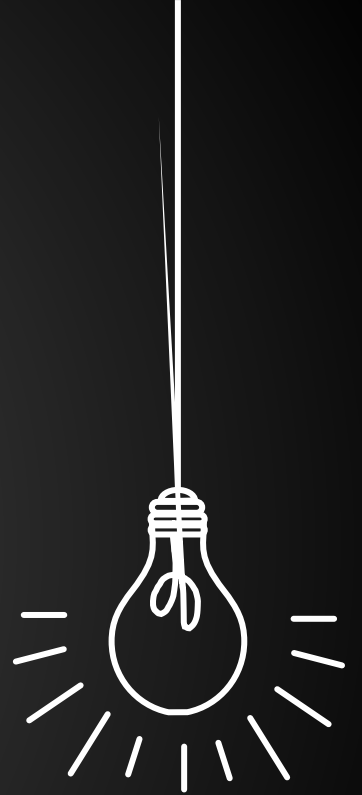
- 💡 Parent engagement is key to the lock of student success
- 💡 Be consistent
- 💡 Talk to the school about how they can support your child
- 💡 Listen and be supportive
- 💡 Encourage healthy habits
- 💡 Collaborate to develop individualized success plans for your child
- 💡 Check out the resources for great tips and information



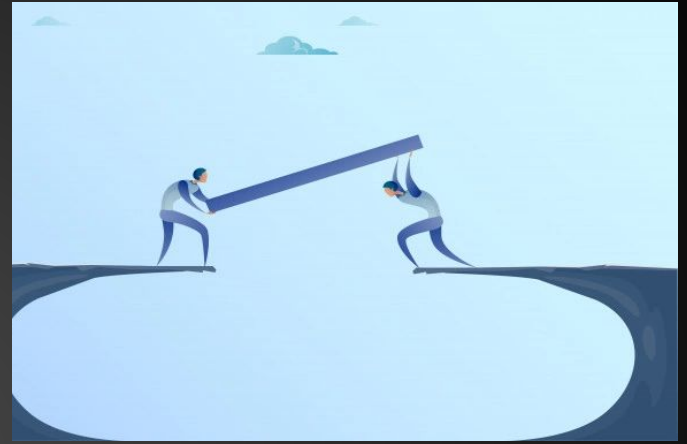


Social Work

Sherma Jackson



Social Workers are the bridge between home and school



8 social workers in our district.



Our role: enhancing student's emotional well-being along with their academic performance.



Confidentiality

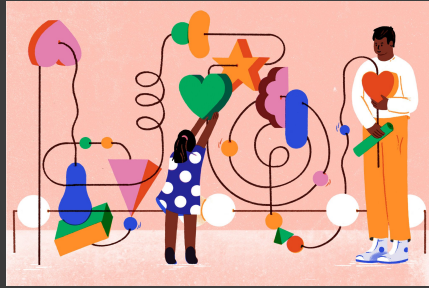
Role of Social Worker in Schools

- **Help Students**

- Coping skills & problem solving
- Interpersonal relationships
- Self-esteem

- **Help Schools**

- Advocate on behalf of families to school staff & teachers
- Promote a safe environment
- Ensure equitable practices are used in school



- **Help Families**

- Connect to different resources
- Provide support to engage with child's academic, mental, and emotional well-being

- **Help Communities**

- Understand different policies, practices, and programs
- Develop strategies and track resources to help students & families



Resources

Pantry

Housing

Referrals

Restorative
Justice

MSD Pike Township Social Workers

Pike High School

Tonya Monnier - Pike High School, Pike Prep

- 317.387.2212

Tammy Coe - Pike High School, Freshman Center, Pike Prep

- 317.347.8572

Middle Schools

Beth Fenney - Lincoln Middle

- 317.387.4116

Terry France-Breedlove - New Augusta North

- 317.388.7701

Sherma Jackson - Guion Middle

- 317.388.7902

Elementary

Carol Robinson - Deer Run, Eagle Creek, Fishback Creek

- 317.387.2211

Kelly Marshall - Snacks Crossing, Central, College Park

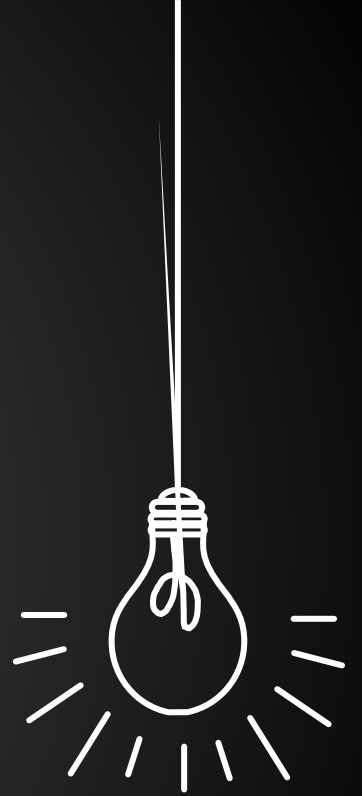
- 317.387.2225

June French - Eastbrook, Guion Elementary, New Augusta South

- 317-387-5968

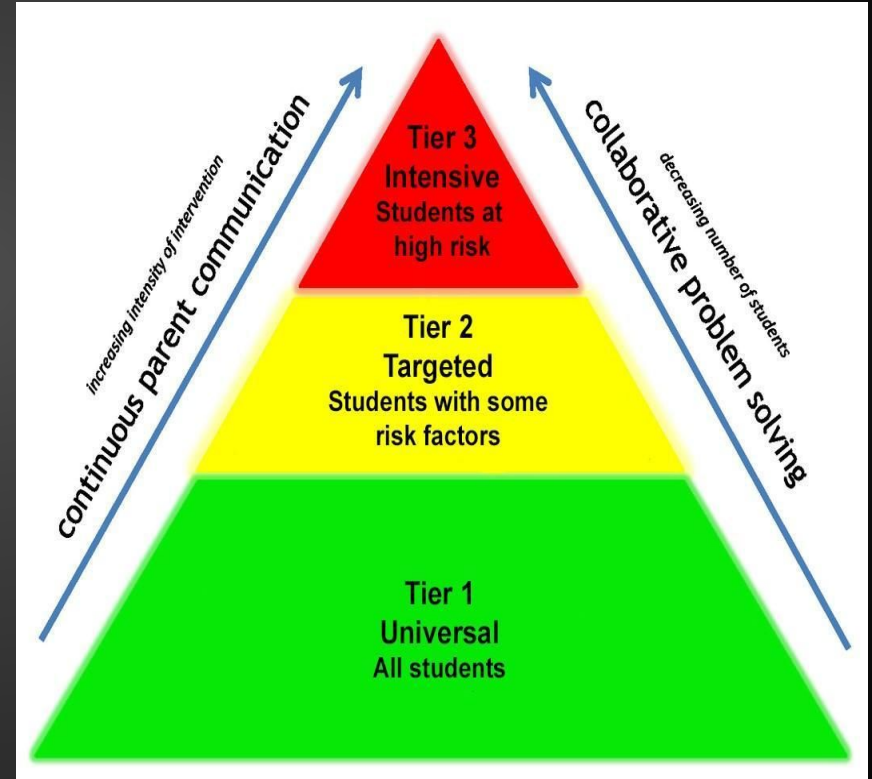


Cummins Richelle Dumas



School Community Mental Health Partnership

- Comprehensive mental health systems that relies on the foundation of educators and school employed mental health professionals.
- Focus is on prevention and early identification of mental health disorders.
- Mental illness can be treated!



Why Address Mental Health In Schools?

1 out of **5** children has a diagnosable mental health disorder



Benefits of School-Based Mental Health Services

Improves

- academic performance
- social-emotional competence
- school climate
- early intervention/treatment
- more accessible to families



Reduces

- mental health stigma
- discipline referrals
- drop out rate
- deaths by suicide
- substance abuse
- involvement in criminal justice system

Cummins Behavioral Health Systems

Services

Individual counseling, family counseling, skills training, case management, referral services, consultation with school staff, in-home services, medication evaluation/management and crisis assessments

Payment

Service payments are accepted by several methods including Medicaid and most major insurance plans. There are sliding fee scales available to those who qualify.



How To Get Help For Your Child

Warning Signs and Symptoms:

- Thoughts or attempts to harm him/herself
- Feeling sad or withdrawn for more than 2 weeks
- Overwhelming fear/anxiety or racing thoughts
- Getting into fights or wanting to hurt others
- Disruption/Irregular sleep or eating patterns
- Using substances
- Severe changes in behavior or personality

How to refer:

- Call the school counselor or social worker to discuss concerns
- Call Cummins

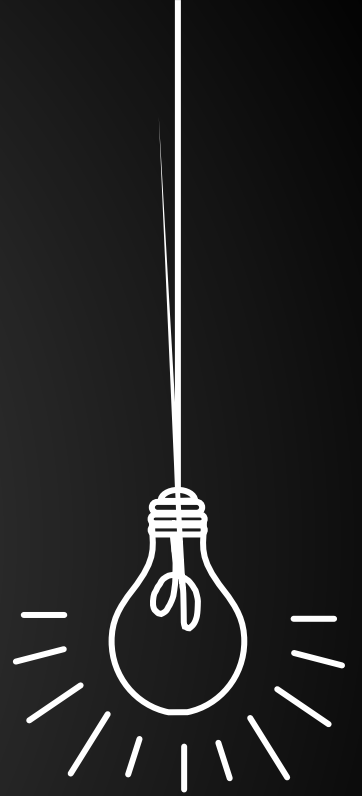
888-714-1927 ext 1500

- Suicide Prevention Lifeline

1-800-273-TALK (8255)



21st Century Tutoring



What is 21st Century?



21st Century is an afterschool program for students at select elementary schools from 3pm-5:15pm, Monday through Thursday.

The program is designed increase academic achievement in reading and math and increase competencies in technology, arts, & character education

The afterschool program provides:



- Science-based Curriculum
- Homework Assistance & Tutoring
- Computer Lab
- Arts & Cultural Enrichment
- Character Education
- Nutritional Snacks



Cost/Transportation

There is no cost for students to participate in the 21st Century program; however space is limited.



All students are provided with bus transportation home at 5:15pm. Parents may also pick their student up from the school.

Participating Schools



Students who are in 2nd through 5th grade and attend, Deer Run, Eastbrook*, or Snacks Crossing may participate in the 21st Century program.

A similar program called REACH will be starting at New Augusta South and College Park in January.

21st Century programs will start at Guion Creek Elementary, Central Elementary, and Pike High School Fall of 2022.

If you have any questions, please contact your student's school.



Thank You

Thank you for joining us today.

Please contact the Navigation Specialists if you have any questions
or need tech support:

Laura: 317-387-2517

Nicole: 317-387-2518

stutechhelp@pike.k12.in.us