

LEA Name : Souderton Area SD
Address : 760 Lower Road
Souderton , PA 18964

County : Montgomery
AUN Number : 123467103
LEA Type : SD

Annual Financial Report
Accuracy Certification Statement

For Fiscal Year Ending
6/30/2018

Pennsylvania Department of Education
&
Office of Comptroller Operations

PDE-2056: Intermediate Unit
PDE-2057: School District, AVTS/CTC, Charter School,
and Special Program Jointure


CERTIFICATION: By signing this page I agree that the electronic data submitted is a complete and accurate statement of the financial operations and status of the local education agency for the fiscal year. It has been prepared in accordance with generally accepted accounting principles and established Commonwealth of PA reporting guidelines.



Chief School Administrator Signature

10-25-18

Date



Board Secretary Signature

10/25/18

Date

Elisa Ball

Contact Person

eball@soudertonsd.org

Contact Person E-mail Address

(215)723-6061 Ext :10259

Contact Person Telephone Number

(215)723-8897

Contact Person Fax Number

Audit Certification
Annual Financial Report:
For Fiscal Year Ending **6/30/2018**
(Pursuant to PA School Code Section 218(b))

LEA Name : Souderton Area SD
AUN Number : 123467103
County : Montgomery

Audit Certification Due: 12/31/2018

This certification is applicable to the Annual Financial Report data submitted
through the Consolidated Financial Reporting System on: 10/29/18
Date

Auditing Firm:

Gorman & Assoc.
1825 Franklin St

Northampton , PA , 18067-


Auditor Contact Name: William Gorman

Auditor Phone: (610)262-1280

Auditor E-mail: bgorman@gaapc.com

CERTIFICATION: By signing this page I agree that the financial statements of the school have been properly audited as noted above pursuant to Article XXIV, and in the auditor's professional opinion, the Annual Financial Report (PDE-2057) submitted on the date referenced is materially consistent with the audited financial statements.

Chief School Administrator


Signature

10-25-18
Date

Board Secretary


Signature

10/25/18
Date

Elisa Ball

Contact Person

eball@soudertonsd.org

Contact Person E-mail Address

(215)723-6061

Ext :10259

Contact Person Telephone Number

(215)723-8897

Contact Person Fax Number

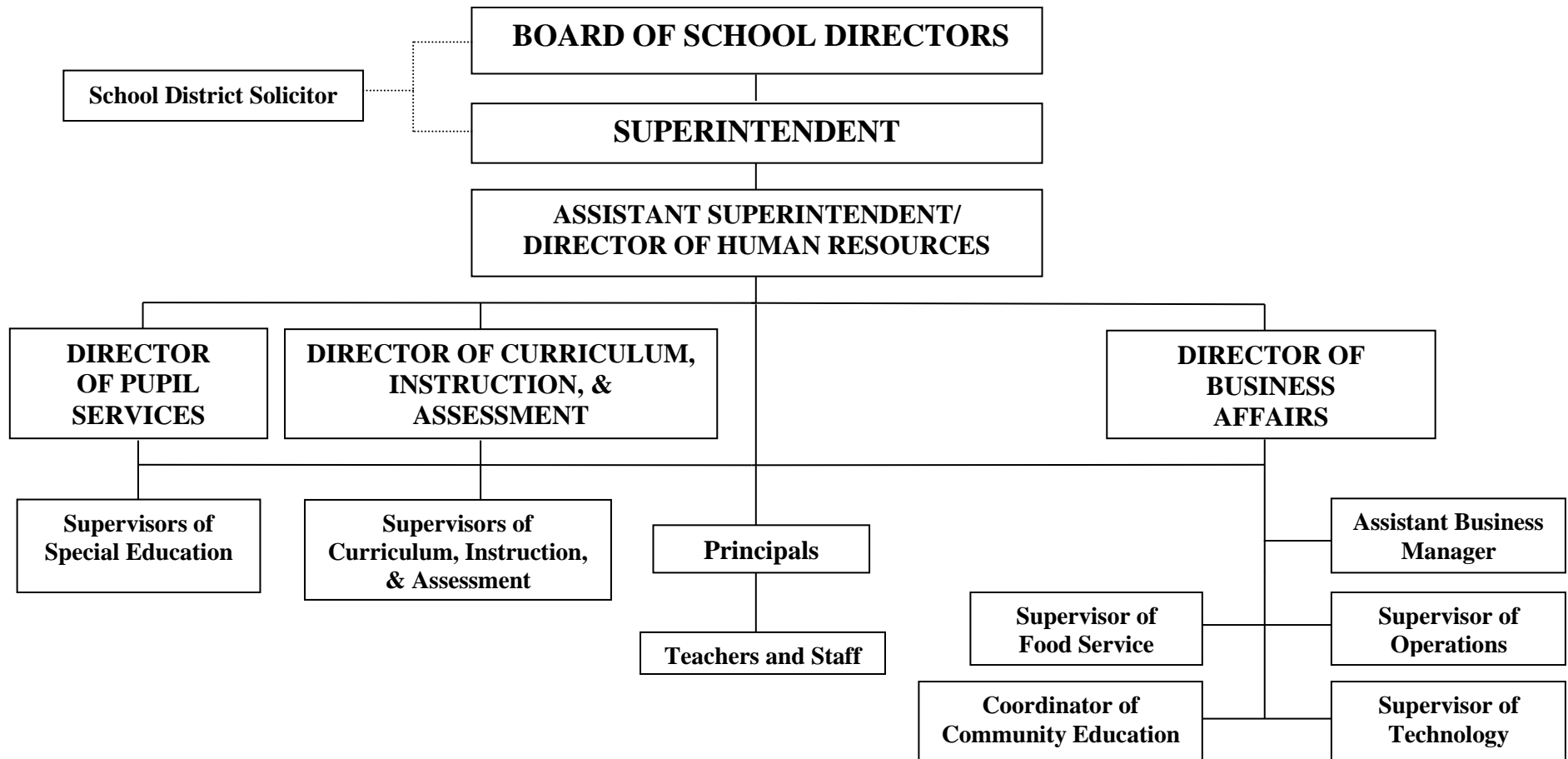
SECTION: LOCAL BOARD PROCEDURES

TITLE: ORGANIZATIONAL CHART

ADOPTED: June 27, 1971

REVISED: February 26, 2015

SOUDERTON AREA SCHOOL DISTRICT



In the absence of the Superintendent, the Assistant Superintendent assumes the role of the Superintendent.

<u>Val Number</u>	<u>Description</u>	<u>Justification</u>
16015	<p>REP Fund 51: Object 300 is greater than object 500. Purchased services for food service contracted services should be coded to objects 571 and 572. Correct or enter a justification.</p> <p>REP Fund 51 Object 300: \$3,855.00 REP Fund 51 Object 500: \$1,960.00</p>	<p>: Amounts in Object 300 series do not include purchased services for food service contracted. Expenses for Services in Support of the LEA's Technology Plan are recorded to the 300 objects.</p>
41162	<p>Expenditure Detail, Salaries (Object 100) and Benefits (Object 200 series): Amounts must be entered for both Salaries and Benefits.</p> <p>Please verify following fund and function codes: Fund 10 Function 1500;</p>	<p>Only had a small amount (\$124) for Non-Public funds. We only charged to salaries</p>
50450	<p>SESS - 2350 Legal and Accounting Services: SESS Schedule amounts for Special Education vary from prior year by 40% or more. Correct the data or enter a justification.</p> <p>SESS Schedule 2350: \$30,018.68 Prior Year SESS Schedule 2350: \$55,155.62</p>	<p>Less spending on legal issues</p>

LEA : 123467103 Souderton Area SD

Printed 10/29/2018 10:24:58 AM

Amounts Expressed in Whole Dollars		<u>General Fund</u> <u>(10)</u>	<u>Public Purpose Trust</u> <u>(27)</u>	<u>Other Compt Approved</u> <u>(28)</u>	<u>Athletic / Activity</u> <u>(29)</u>	<u>Capital Reserve (690.</u> <u>1850)</u> <u>(31)</u>
Assets And Deferred Outflows Of Resources						
Assets						
0100	Cash and Cash Equivalents	11,725,757				
0110	Investments					
0120	Taxes Receivable	1,826,814				
0130	Due From Other Funds	1,244				
0141	Due From Other Governments	774,852				
0142	State Revenue Receivable	3,948,937				
0143	Federal Revenue Receivable	51,248				
0145	Other Intergovernmental Revenue Receivable					
0146	Due from Primary Government					
0147	Due from Component Unit					
0150	Other Receivables	184,014				
0170	Inventories					
0180	Prepaid Expenses (Expenditures)	45,762				
0190	Other Current Assets					
Total Assets		\$18,558,628				
0910	Deferred Outflows of Resources					
Total Assets And Deferred Outflows Of Resources		\$18,558,628				

LEA : 123467103 Souderton Area SD

Printed 10/29/2018 10:24:58 AM

Amounts Expressed in Whole Dollars		<u>Capital Reserve (1431)</u> <u>(32)</u>	<u>Other Capital Projects</u> <u>Fund</u> <u>(39)</u>	<u>Debt Service</u> <u>(40)</u>	<u>Permanent</u> <u>(90)</u>	<u>Total Governmental</u> <u>Funds</u>
Assets And Deferred Outflows Of Resources						
Assets						
0100	Cash and Cash Equivalents		4,699,832			16,425,589
0110	Investments					
0120	Taxes Receivable					1,826,814
0130	Due From Other Funds					1,244
0141	Due From Other Governments					774,852
0142	State Revenue Receivable					3,948,937
0143	Federal Revenue Receivable					51,248
0145	Other Intergovernmental Revenue Receivable					
0146	Due from Primary Government					
0147	Due from Component Unit					
0150	Other Receivables					184,014
0170	Inventories					
0180	Prepaid Expenses (Expenditures)					45,762
0190	Other Current Assets					
Total Assets			\$4,699,832			\$23,258,460
0910	Deferred Outflows of Resources					
Total Assets And Deferred Outflows Of Resources			\$4,699,832			\$23,258,460

LEA : 123467103 Souderton Area SD

Printed 10/29/2018 10:24:58 AM

Amounts Expressed in Whole Dollars	<u>General Fund</u> <u>(10)</u>	<u>Public Purpose Trust</u> <u>(27)</u>	<u>Other Compt Approved</u> <u>(28)</u>	<u>Athletic / Activity</u> <u>(29)</u>	<u>Capital Reserve (690.</u> <u>1850)</u> <u>(31)</u>
Liabilities And Deferred Inflows Of Resources And Fund Balances					
Liabilities					
0400 Due to Other Funds	892				
0411 Due to Other Governments	157,365				
0412 Due to Primary Government					
0413 Due to Component Unit					
0420 Accounts Payable	916,708				
0430 Contracts Payable					
0440 Current Portion of Long-Term Debt	167,237				
0450 Short-Term Payables					
0461 Accrued Salaries and Benefits	6,229,254				
0462 Payroll Deductions and Withholding	393,816				
0480 Unearned Revenues					
0490 Other Current Liabilities	397,691				
Total Liabilities	\$8,262,963				
0950 Deferred Inflows of Resources	1,371,934				
Fund Balances					
0810 Nonspendable Fund Balance	45,762				
0820 Restricted Fund Balance	3,170,516				
0830 Committed Fund Balance					
0840 Assigned Fund Balance	86,172				
0850 Unassigned Fund Balance	5,621,281				
Total Fund Balances	\$8,923,731				
Total Liabilities, Deferred Inflows Of Resources And Fund Balances	\$18,558,628				

LEA : 123467103 Souderton Area SD

Printed 10/29/2018 10:24:58 AM

Amounts Expressed in Whole Dollars		<u>Capital Reserve (1431)</u> <u>(32)</u>	<u>Other Capital Projects</u> <u>Fund</u> <u>(39)</u>	<u>Debt Service</u> <u>(40)</u>	<u>Permanent</u> <u>(90)</u>	<u>Total Governmental</u> <u>Funds</u>
Liabilities And Deferred Inflows Of Resources And Fund Balances						
Liabilities						
0400	Due to Other Funds					892
0411	Due to Other Governments					157,365
0412	Due to Primary Government					
0413	Due to Component Unit					
0420	Accounts Payable		1,051,931			1,968,639
0430	Contracts Payable					
0440	Current Portion of Long-Term Debt					167,237
0450	Short-Term Payables					
0461	Accrued Salaries and Benefits					6,229,254
0462	Payroll Deductions and Withholding					393,816
0480	Unearned Revenues					
0490	Other Current Liabilities					397,691
Total Liabilities			\$1,051,931			\$9,314,894
0950	Deferred Inflows of Resources					1,371,934
Fund Balances						
0810	Nonspendable Fund Balance					45,762
0820	Restricted Fund Balance		3,647,901			6,818,417
0830	Committed Fund Balance					
0840	Assigned Fund Balance					86,172
0850	Unassigned Fund Balance					5,621,281
Total Fund Balances			\$3,647,901			\$12,571,632
Total Liabilities, Deferred Inflows Of Resources And Fund Balances			\$4,699,832			\$23,258,460

Amounts Expressed in Whole Dollars	<u>General Fund</u> <u>(10)</u>	<u>Public Purpose Trust</u> <u>(27)</u>	<u>Other Compt Approved</u> <u>(28)</u>	<u>Athletic / Activity</u> <u>(29)</u>	<u>Capital Reserve (690.</u> <u>1850)</u> <u>(31)</u>
Revenues					
6000 Revenue from Local Sources	93,671,014				
7000 Revenue from State Sources	29,080,577				
8000 Revenue from Federal Sources	946,608				
Total Revenues	\$123,698,199				
Expenditures					
1000 Instruction	77,085,170				
2000 Support Services	35,963,140				
3000 Operation of Non-Instructional Services	1,472,963				
4000 Facilities Acquisition, Construction and Improvement Services	46,127				
5110 Debt Service	9,494,559				
5130 Refund of Prior Year Revenues / Receipts					
Total Expenditures	\$124,061,959				
Excess (Deficiency) Of Revenues Over Expenditures	(\$363,760)				
Other Financing Sources (Uses)					
9110 Face Value of Bonds Issued					
9120 Proceeds from Refunding of Bonds					
9130 Bond Premiums					
9200 Proceeds from Extended-Term Financing					
9300 Interfund Transfers - IN	127				
9400 Sale of or Compensation for Loss of Fixed Assets	3,200,000				
9710 Transfers from Component Units					
9720 Transfers from Primary Governments					
9910 Other Financing Sources Not Listed in the 9000 Series					
9990 Insurance Recoveries	3,352				
5120 Debt Service – Refunded Bonds					
5150 Bond Discounts					
5200 Interfund Transfers – Out					
5300 Transfers Out to Component Units/Primary Governments					
Total Other Financing Sources (Uses)	\$3,203,479				

LEA : 123467103 Souderton Area SD

Printed 10/29/2018 10:25:05 AM

Amounts Expressed in Whole Dollars		<u>Capital Reserve (1431</u> <u>(32)</u>	<u>Other Capital Projects</u> <u>Fund</u> <u>(39)</u>	<u>Debt Service</u> <u>(40)</u>	<u>Permanent</u> <u>(90)</u>	<u>Total Governmental</u> <u>Funds</u>
Revenues						
6000	Revenue from Local Sources		100,864	1		93,771,879
7000	Revenue from State Sources					29,080,577
8000	Revenue from Federal Sources					946,608
Total Revenues			\$100,864	\$1		\$123,799,064
Expenditures						
1000	Instruction					77,085,170
2000	Support Services					35,963,140
3000	Operation of Non-Instructional Services					1,472,963
4000	Facilities Acquisition, Construction and Improvement Services		7,014,683			7,060,810
5110	Debt Service					9,494,559
5130	Refund of Prior Year Revenues / Receipts					
Total Expenditures			\$7,014,683			\$131,076,642
Excess (Deficiency) Of Revenues Over Expenditures			(\$6,913,819)	\$1		(\$7,277,578)
Other Financing Sources (Uses)						
9110	Face Value of Bonds Issued					
9120	Proceeds from Refunding of Bonds					
9130	Bond Premiums					
9200	Proceeds from Extended-Term Financing					
9300	Interfund Transfers - IN					127
9400	Sale of or Compensation for Loss of Fixed Assets					3,200,000
9710	Transfers from Component Units					
9720	Transfers from Primary Governments					
9910	Other Financing Sources Not Listed in the 9000 Series					
9990	Insurance Recoveries					3,352
5120	Debt Service – Refunded Bonds					
5150	Bond Discounts					
5200	Interfund Transfers – Out			127		127
5300	Transfers Out to Component Units/Primary Governments					
Total Other Financing Sources (Uses)				(\$127)		\$3,203,352

Amounts Expressed in Whole Dollars		<u>General Fund</u> <u>(10)</u>	<u>Public Purpose Trust</u> <u>(27)</u>	<u>Other Compt Approved</u> <u>(28)</u>	<u>Athletic / Activity</u> <u>(29)</u>	<u>Capital Reserve</u> <u>(690.</u> <u>1850)</u> <u>(31)</u>
Special And Extraordinary Items						
9920	Special Items – Gains					
9930	Extraordinary Items – Gains					
5520	Special Items – Losses					
5530	Extraordinary Items – Losses					
Net Change In Fund Balances		\$2,839,719				
Fund Balance						
0001	Fund Balance - Beginning of Fiscal Year	6,084,012				
Fund Balance - End Of Year		\$8,923,731				

Amounts Expressed in Whole Dollars		<u>Capital Reserve (1431)</u> <u>(32)</u>	<u>Other Capital Projects</u> <u>Fund</u> <u>(39)</u>	<u>Debt Service</u> <u>(40)</u>	<u>Permanent</u> <u>(90)</u>	<u>Total Governmental</u> <u>Funds</u>
Special And Extraordinary Items						
9920	Special Items – Gains					
9930	Extraordinary Items – Gains					
5520	Special Items – Losses					
5530	Extraordinary Items – Losses					
Net Change In Fund Balances			(\$6,913,819)	(\$126)		(\$4,074,226)
Fund Balance						
0001	Fund Balance - Beginning of Fiscal Year		10,561,720	126		16,645,858
Fund Balance - End Of Year			\$3,647,901			\$12,571,632

LEA : 123467103 Souderton Area SD

Printed 10/29/2018 10:25:06 AM

Amounts Expressed in Whole Dollars		<u>Food Service</u> <u>(51)</u>	<u>Child Care</u> <u>Operations</u> <u>(52)</u>	<u>Other Enterprise</u> <u>(58)</u>	<u>TOTAL</u>	<u>Internal Service</u> <u>(60)</u>
Assets And Deferred Outflows Of Resources						
Current Assets						
0100	Cash and Cash Equivalents	449,631			449,631	3,531,293
0110	Investments					
0130	Due From Other Funds	892			892	
0141	Due From Other Governments					
0142	State Revenue Receivable	2,194			2,194	
0143	Federal Revenue Receivable	28,795			28,795	
0146	Due from Primary Government					
0147	Due from Component Unit					
0150	Other Receivables	5,139			5,139	3,481
0170	Inventories	70,894			70,894	
0180	Prepaid Expenses (Expenditures)					
0190	Other Current Assets					
Total Current Assets		\$557,545			\$557,545	\$3,534,774
Noncurrent Assets						
0211	Land					
0212	Site Improvements (Net)					
0220	Buildings and Building Improvements (Net)					
0230	Machinery, Equipment and Furniture (Net)	481,077			481,077	
0250	Construction in Progress					
0260	Long Term Prepayments					
0290	Other Noncurrent Assets					
Total Noncurrent Assets		\$481,077			\$481,077	
0910	Deferred Outflows of Resources	508,773			508,773	
Total Assets And Deferred Outflows Of Resources		\$1,547,395			\$1,547,395	\$3,534,774

LEA : 123467103 Souderton Area SD

Printed 10/29/2018 10:25:06 AM

Amounts Expressed in Whole Dollars	<u>Food Service</u> <u>(51)</u>	<u>Child Care</u> <u>Operations</u> <u>(52)</u>	<u>Other Enterprise</u> <u>(58)</u>	<u>TOTAL</u>	<u>Internal Service</u> <u>(60)</u>
Liabilities And Deferred Inflows Of Resources And Net Position					
Current Liabilities					
0400 Due to Other Funds	1,244			1,244	
0411 Due to Other Governments					
0413 Due to Component Unit					
0420 Accounts Payable	34,268			34,268	930,518
0430 Contracts Payable					
0440 Current Portion of Long-Term Debt					
0450 Short-Term Payables					
0461 Accrued Salaries and Benefits	6,218			6,218	
0462 Payroll Deductions and Withholding					
0480 Unearned Revenues	100,265			100,265	
0490 Other Current Liabilities					
Total Current Liabilities	\$141,995			\$141,995	\$930,518
Noncurrent Liabilities					
0510 Bonds Payable					
0520 Extended-Term Financing Agreements Payable					
0530 Lease-Purchase Obligations					
0540 Accumulated Compensated Absences					
0550 Authority Lease Obligations					
0560 Other Post-Employment Benefits (OPEB)	146,153			146,153	
0570 Net Pension Liability	3,076,726			3,076,726	
0599 Other Noncurrent Liabilities					
Total Noncurrent Liabilities	\$3,222,879			\$3,222,879	
Total Liabilities	\$3,364,874			\$3,364,874	\$930,518
0950 Deferred Inflows of Resources	6,910			6,910	
Net Position					
0791 Net Investment in Capital Assets	481,078			481,078	
0008 Restricted Net Position (0792 – 0798)					
0799 Unrestricted Net Position	(2,305,467)			(2,305,467)	2,604,256
Total Net Position	(\$1,824,389)			(\$1,824,389)	\$2,604,256
Total Liabilities And Deferred Inflows Of Resources And Net Position	\$1,547,395			\$1,547,395	\$3,534,774

Amounts Expressed in Whole Dollars	Food Service (51)	Child Care Operations (52)	Other Enterprise (58)	TOTAL	Internal Service (60)
Operating Revenues					
6600 Food Service Revenue	1,433,001			1,433,001	
0071 Charges for Services					13,685,437
0072 Other Operating Revenue	25,504			25,504	2,431
Total Operating Revenues	\$1,458,505			\$1,458,505	\$13,687,868
Operating Expenses					
100 Personnel Services – Salaries	877,705			877,705	
200 Personnel Services – Employee Benefits	533,672			533,672	9,926,745
300 Purchased Professional and Technical Services	3,855			3,855	
400 Purchased Property Services	60,585			60,585	
500 Other Purchased Services	1,960			1,960	822,302
600 Supplies	1,145,800			1,145,800	
740 Depreciation	49,822			49,822	
810 Dues and Fees	1,797			1,797	334,567
890 Miscellaneous Expenditures					
Total Operating Expenses	\$2,675,196			\$2,675,196	\$11,083,614
Operating Income (Loss)	(\$1,216,691)			(\$1,216,691)	\$2,604,254
Non Operating Revenues (Expenses)					
6500 Earnings on Investments	509			509	
6920 Contributions and Donations from Private Sources					
6930 Gains or Losses on Sale of Fixed Assets					
6991 Refunds of a Prior Year Expenditure					
7000 Revenue from State Sources	229,242			229,242	
8000 Revenue from Federal Sources	946,143			946,143	
820 Claims and Judgments Against the LEA					
830 Interest					
TOTAL Non Operating Revenues (Expenses)	\$1,175,894			\$1,175,894	
Income (Loss) Before Contributions And Transfers	(\$40,797)			(\$40,797)	\$2,604,254

Amounts Expressed in Whole Dollars	<u>Food Service</u> <u>(51)</u>	<u>Child Care Operations</u> <u>(52)</u>	<u>Other Enterprise</u> <u>(58)</u>	<u>TOTAL</u>	<u>Internal Service</u> <u>(60)</u>
Contributions, Transfers, and Special and Extraordinary Items					
5200 Interfund Transfers – Out					
5300 Transfers Out to Component Units/Primary Governments					
5520 Special Items – Losses					
5530 Extraordinary Items – Losses					
9300 Interfund Transfers - IN					
9500 Capital Contributions					
9700 Transfers IN From Component Units/Primary Governments					
9920 Special Items – Gains					
9930 Extraordinary Items – Gains					
Change In Net Position	(\$40,797)			(\$40,797)	\$2,604,254
0002 Net Position - Beginning of Fiscal Year	(1,664,552)			(1,664,552)	
0003 Accounting Changes / Residual Equity Transfers	(119,040)			(119,040)	
Net Position - End Of Year	(\$1,824,389)			(\$1,824,389)	\$2,604,254

LEA : 123467103 Souderton Area SD

Printed 10/29/2018 10:25:12 AM

Amounts Expressed in Whole Dollars	<u>Food Service</u> <u>(51)</u>	<u>Child Care Operations</u> <u>(52)</u>	<u>Other Enterprise</u> <u>(58)</u>	<u>TOTAL</u>	<u>Internal Service(60)</u>
Cash Flows From Operating Activities					
0011 Cash Receipts From Users	1,435,722			1,435,722	
0012 Cash Receipts From Assessments Made to Other Funds					14,631,464
0013 Cash Receipts From Earnings on Investments					2,431
0014 Cash Receipts From Other Operating Revenue	25,504			25,504	
0015 Cash Payments To Employees For Services	1,354,399			1,354,399	
0016 Cash Payments For Insurance Claims					10,996,272
0017 Cash Payments To Suppliers For Goods and Services	1,040,454			1,040,454	
0018 Cash Payments For Other Operating Expenses	1,797			1,797	334,567
Net Cash Provided By (Used For) Operating Activities	(\$935,424)			(\$935,424)	\$3,303,056
Cash Flows From Non-Capital Financing Activities					
0021 Receipts From Local Sources - 6000					
0022 Receipts From State Sources - 7000	229,354			229,354	
0023 Receipts From Federal Sources -8000	779,201			779,201	
0024 Notes and Loans Received (Repaid)					
0025 Interest Paid on Notes/Loans - 5100-830					
0026 Operating Transfers In (Out)/Residual Equity Trans					
0027 Operating Transfers In (Out) Primary Government / Comp Unit					
0028 Receipts From Refund of Prior Year Expenditures - 6991					
0029 Special and Extraordinary Gains (losses)					
0030 Receipts from Insurance Recoveries -9990					
Net Cash Prov By (Used for) Non-Capital Financing Activities	\$1,008,555			\$1,008,555	
Cash Flows From Capital and Related Financing Activities					
0031 Payments For Fac Acq, Const, and Imp - 4000	(13,668)			(13,668)	
0032 Gain / (Loss) on Sale of Fixed Assets - 6930					
0033 Proceeds From Extended Term Financing - 9200					
0034 Principal Paid on Financing Agreements					
0035 Interest Paid on Financing Agreements - 5100-830					
0036 (Inc) Dec in Contributed Capital					
Net Cash Prov By (Used for) Capital and Related Financing Activities	(\$13,668)			(\$13,668)	
Cash Flows From Investing Activities					
0041 Earnings on Investments - 6500	509			509	
0042 Purchase of Inv Securities / Deposits to Inv Pools					
0043 Receipts From Investment Pool Withdrawals					
0044 Proceeds from Sale and Maturity of Inv Securities					

LEA : 123467103 Souderton Area SD

Printed 10/29/2018 10:25:12 AM

0045 Loans Received (Paid)

Net Cash Prov By (Used for) Investing Activities	\$509	\$509
--	-------	-------

LEA : 123467103 Souderton Area SD

Printed 10/29/2018 10:25:12 AM

	Food Service (51)	Child Care Operations (52)	Other Enterprise (58)	TOTAL	Internal Service (60)
Net Increase (Decrease) in Cash Flows	59,972			59,972	3,303,056
0004 Cash and Cash Equivalents Beginning of Year	389,659			389,659	228,237
Cash and Cash Equivalents at Year End	\$449,631			\$449,631	\$3,531,293
Reconciliation of Operating Income (Loss) To Net Cash Provided by (Used For) Operating Activities					
0005 Operating Income (Loss) per REP	(1,216,691)			(1,216,691)	2,604,254
Adjustments					
0051 Depreciation and Net Amortization	49,822			49,822	
0052 Provision for Uncollectible Accounts					
0053 Other Adjustments	172,084			172,084	
Effect of Changes in Assets, Liabilities, Deferred Outflows and Deferred Inflows					
0054 (Inc) Dec In Accounts Receivable (0120-0150)	136			136	54,745
0055 Advances to Other Funds (0160)	2,585			2,585	891,282
0056 (Inc) Dec in Inventories (0170)	2,263			2,263	
0057 (Inc) Dec in Prepaid Expenses (0180)					
0058 (Inc) Dec in Other Current or Noncurrent Assets					
0064 Deferred Outflows (0910)	54,305			54,305	
0059 Inc (Dec) in Accounts Payable (0400-0450)	(5,013)			(5,013)	(138,809)
0060 Inc (Dec) in Accrued Salaries/Benefits (0461)	(779)			(779)	
0065 Inc (Dec) in Net Pension Liabilities (0570)	19,632			19,632	
0066 Inc (Dec) in Other Postemp Benefit Oblig (0560)	7,530			7,530	
0061 Inc (Dec) in Payroll Deductions/Withholding (0462)					
0062 Inc (Dec) in Unearned Revenue (0480)					
0063 Inc (Dec) in Other Current or Noncurrent Liabilities	2,411			2,411	(108,418)
0067 Deferred Inflows (0950)	(23,709)			(23,709)	
Total Adjustments	\$281,267			\$281,267	\$698,800
Cash Provided By (Used for) Total	(\$935,424)			(\$935,424)	\$3,303,054

COMBINED STATEMENT OF CASH FLOWS
SCHEDULE OF NONCASH INVESTING, CAPITAL, AND FINANCING ACTIVITIES

Explanation of Transaction and Balance Sheet Effect	Amount
Total	

LEA : 123467103 Souderton Area SD

Printed 10/29/2018 10:25:13 AM

Amounts Expressed in Whole Dollars	<u>Private Purpose Trust</u> <u>(71)</u>	<u>Investment Trust</u> <u>(72)</u>	<u>Pension Trust</u> <u>(73)</u>	<u>Activity</u> <u>(81)</u>
Assets And Deferred Outflows Of Resources				
Assets				
0100 Cash and Cash Equivalents	77,795			249,029
0110 Investments				
0130 Due From Other Funds				
0147 Due from Component Unit				
0150 Other Receivables				2,741
0170 Inventories				
0180 Prepaid Expenses (Expenditures)				
0190 Other Current Assets				
0220 Buildings and Building Improvements (Net)				
0230 Machinery, Equipment and Furniture (Net)				
Total Assets	\$77,795			\$251,770
0910 Deferred Outflows of Resources				
Total Assets And Deferred Outflows Of Resources	\$77,795			\$251,770

LEA : 123467103 Souderton Area SD

Printed 10/29/2018 10:25:13 AM

Amounts Expressed in Whole Dollars		<u>Other Agency</u> <u>(89)</u>	<u>Discrete Component Units</u> <u>(98)</u>	<u>Discrete Component Units</u> <u>(99)</u>	<u>Total Fiduciary Funds</u>
Assets And Deferred Outflows Of Resources					
Assets					
0100	Cash and Cash Equivalents				326,824
0110	Investments				
0130	Due From Other Funds				
0147	Due from Component Unit				
0150	Other Receivables				2,741
0170	Inventories				
0180	Prepaid Expenses (Expenditures)				
0190	Other Current Assets				
0220	Buildings and Building Improvements (Net)				
0230	Machinery, Equipment and Furniture (Net)				
Total Assets					\$329,565
0910	Deferred Outflows of Resources				
Total Assets And Deferred Outflows Of Resources					\$329,565

LEA : 123467103 Souderton Area SD

Printed 10/29/2018 10:25:13 AM

Amounts Expressed in Whole Dollars	<u>Private Purpose Trust</u> <u>(71)</u>	<u>Investment Trust</u> <u>(72)</u>	<u>Pension Trust</u> <u>(73)</u>	<u>Activity</u> <u>(81)</u>
Liabilities, Deferred Inflows Of Resources And Net Position				
Liabilities				
0400 Due to Other Funds				
0411 Due to Other Governments				
0412 Due to Primary Government				
0413 Due to Component Unit				
0420 Accounts Payable				6,287
0430 Contracts Payable				
0450 Short-Term Payables				
0461 Accrued Salaries and Benefits				
0462 Payroll Deductions and Withholding				
0480 Unearned Revenues				
0490 Other Current Liabilities				245,483
Total Liabilities				\$251,770
0950 Deferred Inflows of Resources				
Net Position				
0791 Net Investment in Capital Assets				
0009 Restricted Net Position (0792 – 0798)				
0799 Unrestricted Net Position	77,795			
Total Net Position	\$77,795			
Total Liabilities, Deferred Inflows Of Resources And Net Position	\$77,795			\$251,770

LEA : 123467103 Souderton Area SD

Printed 10/29/2018 10:25:13 AM

Amounts Expressed in Whole Dollars

<u>Other Agency</u> <u>(89)</u>	<u>Discrete Component Units</u> <u>(98)</u>	<u>Discrete Component Units</u> <u>(99)</u>	<u>Total Fiduciary Funds</u>
------------------------------------	--	--	------------------------------

Liabilities, Deferred Inflows Of Resources And Net Position

Liabilities

0400	Due to Other Funds		
0411	Due to Other Governments		
0412	Due to Primary Government		
0413	Due to Component Unit		
0420	Accounts Payable		6,287
0430	Contracts Payable		
0450	Short-Term Payables		
0461	Accrued Salaries and Benefits		
0462	Payroll Deductions and Withholding		
0480	Unearned Revenues		
0490	Other Current Liabilities		245,483
Total Liabilities			\$251,770

0950 Deferred Inflows of Resources

Net Position

0791	Net Investment in Capital Assets		
0009	Restricted Net Position (0792 – 0798)		
0799	Unrestricted Net Position		77,795
Total Net Position			\$77,795
Total Liabilities, Deferred Inflows Of Resources And Net Position			\$329,565

LEA : 123467103 Souderton Area SD

Printed 10/29/2018 10:25:14 AM

Amounts Expressed in Whole Dollars	<u>Private Purpose Trust</u> <u>(71)</u>	<u>Investment Trust</u> <u>(72)</u>	<u>Pension Trust</u> <u>(73)</u>	<u>Discrete Component</u> <u>Units</u> <u>(98)</u>	<u>Discrete Component</u> <u>Units</u> <u>(99)</u>	<u>Total Fiduciary</u> <u>Funds</u>
Additions						
0091 Gifts and Contributions	43,589					43,589
0092 Other Additions	37					37
Deductions						
0093 Scholarships Awarded	40,722					40,722
0094 Other Deductions						
Change In Net Position	\$2,904					\$2,904
0006 Net Position – Beginning of Fiscal Year	74,891					74,891
0007 Net Position Held in Trust for Pension Benefits						
Net Position - End of Fiscal Year	\$77,795					\$77,795

LEA : 123467103 Souderton Area SD

General Fund (10)

Printed 10/29/2018 10:25:15 AM

Page - 1 of 4

	Revenue Reported In Current Year	Current Year Tax Accrual	Prior Year Tax Accrual	Taxes Collected In Current Year
Revenue from Local Sources				
6111 Current Real Estate Taxes	77,582,831.22			77,582,831.22
6112 Interim Real Estate Taxes	500,040.60			500,040.60
6113 Public Utility Realty Taxes	89,899.49			89,899.49
6114 Payments in Lieu of Current Taxes - State / Local	288,707.08			288,707.08
6120 Current Per Capita Taxes, Section 679	139,483.29			139,483.29
6141 Current Act 511 Per Capita Taxes	139,483.29			139,483.29
6151 Current Act 511 Earned Income Taxes	7,950,533.30	53,611.96	13,784.25	7,910,705.59
6153 Current Act 511 Real Estate Transfer Taxes	1,303,242.98	124,549.71	145,007.24	1,323,700.51
6411 Delinquent Real Estate Taxes	1,249,198.89	287,370.53	310,161.81	1,271,990.17
6420 Delinquent Per Capita Taxes, Section 679	12,442.23	2,476.65	451.16	10,416.74
6440 Delinquent Local Enabling Taxes - Flat Rate Assessments	12,442.42	2,476.65	451.16	10,416.93
6500 Earnings on Investments	354,345.14			
6700 Revenues from LEA Activities	555,532.98			
6821 State Revenue Received from Other Pennsylvania Public LEAs	2,500.00			
6832 Federal IDEA Revenue Received as Pass Through	1,233,539.09			
6839 Federal Revenue Received from Other Sources	176,337.38			
6890 Other Revenue from Intermediary Sources	5,000.00			
6910 Rentals	174,101.82			
6920 Contributions and Donations from Private Sources	14,145.11			
6941 Regular Day School Tuition	4,353.36			
6942 Summer School Tuition	927.65			
6943 Adult Education Tuition	144,415.00			
6944 Receipts from Other LEAs in Pennsylvania - Education	279,402.49			
6945 Receipts from Out-of-State LEAs	23,407.93			
6961 Transportation Services Provided Other Pennsylvania LEAs	85,803.64			
6962 Other Services Provided Other Pennsylvania LEAs	26,156.25			
6969 All Other Services Provided Other Governments	97,236.33			
6980 Revenue from Community Services Activities	446,133.89			
6991 Refunds of a Prior Year Expenditure	29,140.67			
6992 Energy Efficiency Revenues and Incentives	38,345.64			
6999 Other Revenues Not Specified Above	711,884.93			
TOTAL Revenue from Local Sources	\$93,671,014.09	\$470,485.50	\$469,855.62	\$89,267,674.91

	Revenue Reported In Current Year			
<u>Revenue from State Sources</u>				
7110 Basic Education Funding	9,448,138.91			
7160 Tuition for Orphans Subsidy	294,457.54			
7271 Special Education funds for School-Aged Pupils	3,133,369.53			
7311 Pupil Transportation Subsidy	1,788,024.22			
7312 Nonpublic and Charter School Pupil Transportation Subsidy	367,675.00			
7320 Rental and Sinking Fund Payments / Building Reimbursement Subsidy	797,594.14			
7330 Health Services (Medical, Dental, Nurse, Act 25)	126,849.26			
7340 State Property Tax Reduction Allocation	2,209,903.08			
7505 Ready to Learn Block Grant	524,477.00			
7810 State Share of Social Security and Medicare Taxes	1,885,836.09			
7820 State Share of Retirement Contributions	8,504,252.33			
TOTAL Revenue from State Sources	\$29,080,577.10			

	Revenue Reported In Current Year			
<u>Revenue from Federal Sources</u>				
8514 NCLB, Title I - Improving the Academic Achievement of the Disadvantaged	472,625.66			
8515 NCLB, Title II - Preparing, Training and Recruiting High Quality Teachers and Principals	137,921.93			
8516 NCLB, Title III - Language Instruction for Limited English Proficient and Immigrant Students	69,639.81			
8517 NCLB, Title IV - 21St Century Schools	10,800.00			
8810 School-Based Access Medicaid Reimbursement Program (SBAP) Reimbursements (Access)	250,000.00			
8820 Medical Assistance Reimbursement for Administrative Claiming (Quarterly) Program	5,621.08			
TOTAL Revenue from Federal Sources	\$946,608.48			

	Revenue Reported In Current Year			
<u>Other Financing Sources</u>				
9340 Debt Service Fund Transfers	127.34			
9400 Sale of or Compensation for Loss of Fixed Assets	3,200,000.00			
9990 Insurance Recoveries	3,352.24			
TOTAL Other Financing Sources	\$3,203,479.58			
TOTAL FROM ALL SOURCES	\$126,901,679.25	\$470,485.50	\$469,855.62	\$89,267,674.91

Revenue from Local Sources	93,671,014.09
Revenue from State Sources	29,080,577.10
Revenue from Federal Sources	946,608.48
Other Financing Sources	3,203,479.58
TOTAL FROM ALL SOURCES	\$126,901,679.25

LEA : 123467103 Souderton Area SD

Printed 10/29/2018 10:25:18 AM

General Fund (10)

1000 Instruction		Total
100 <u>Personnel Services – Salaries</u>		
100 Personnel Services – Salaries		38,707,456.87
Total Personnel Services – Salaries		\$38,707,456.87
200 <u>Personnel Services – Employee Benefits</u>		
210 Group Insurance – Contracted Provider		74,417.05
220 Social Security Contributions		2,829,024.78
230 PSERS Retirement Contributions		12,526,286.02
240 Tuition Reimbursement		30.40
250 Unemployment Compensation		5,351.86
260 Workers' Compensation		126,513.06
270 Group Insurance – Self-Insurance		7,488,013.00
291 Other Retirement Plans		91,388.75
Total Personnel Services – Employee Benefits		\$23,141,024.92
300 <u>Purchased Professional and Technical Services</u>		
322 Professional Educational Services – Ius		679,494.20
323 Professional Educational Services – Other Educational Agencies		121,370.29
324 Professional Educational Services – Employee Training and Development Services		2,171.00
329 Professional Educational Services – Other		1,595.00
330 Other Professional Services		2,726,922.99
390 Other Purchased Professional and Technical Services		24,238.95
Total Purchased Professional and Technical Services		\$3,555,792.43
400 <u>Purchased Property Services</u>		
430 Repairs and Maintenance Services		606.14
440 Rentals		402.88
Total Purchased Property Services		\$1,009.02
500 <u>Other Purchased Services</u>		
510 Student Transportation Services		38,735.39
530 Communications		1,047.89
550 Printing and Binding		34,588.88
561 Tuition To Other School Districts Within the State		75,643.11
562 Tuition To Pennsylvania Charter Schools		4,067,899.32
563 Tuition To Nonpublic Schools		2,449,402.78
564 Tuition To Career and Technology Centers		2,224,176.38
566 Tuition To Institutions of Higher Education and Technical Institutes		9,550.00
567 Tuition To Approved Private Schools (APS) and PA Chartered Schools for the Deaf and Blind		323,508.74
568 Tuition To Private Residential Rehabilitative Institutions (PRRI) [In-State] and Detention Centers		1,472,660.62
569 Tuition – Other		294.00
580 Travel		6,131.15
599 Other Miscellaneous Purchased Services		22,034.21
Total Other Purchased Services		\$10,725,672.47
600 <u>Supplies</u>		
610 General Supplies		411,581.44
630 Food		30,637.14
640 Books and Periodicals		232,783.81

LEA : 123467103 Souderton Area SD

Printed 10/29/2018 10:25:18 AM

General Fund (10)	
1000 Instruction	<u>Total</u>
600 <u>Supplies</u>	
650 Supplies & Fees – Technology Related	114,204.99
Total Supplies	\$789,207.38
700 <u>Property</u>	
752 Capital Equipment – Original and Additional	7,927.50
762 Capitalized Equipment - Replacement	15,542.94
Total Property	\$23,470.44
800 <u>Other Objects</u>	
810 Dues and Fees	15,247.93
820 Claims and Judgments Against the LEA	121,065.79
890 Miscellaneous Expenditures	5,223.08
Total Other Objects	\$141,536.80
Total 1000 Instruction	\$77,085,170.33

LEA : 123467103 Souderton Area SD

Printed 10/29/2018 10:25:18 AM

General Fund (10)

1100 Regular Programs – Elementary / Secondary

	Elementary	Secondary	Federal	Total
100 <u>Personnel Services – Salaries</u>				
100 Personnel Services – Salaries	13,588,644.24	15,587,881.19	393,192.17	29,569,717.60
Total Personnel Services – Salaries	\$13,588,644.24	\$15,587,881.19	\$393,192.17	\$29,569,717.60
200 <u>Personnel Services – Employee Benefits</u>				
210 Group Insurance – Contracted Provider	26,604.49	30,279.73		56,884.22
220 Social Security Contributions	992,418.10	1,141,096.21	29,210.55	2,162,724.86
230 PSERS Retirement Contributions	4,413,794.97	5,058,714.24	127,990.57	9,600,499.78
250 Unemployment Compensation	656.11	3,199.57		3,855.68
260 Workers' Compensation	45,230.29	49,688.92		94,919.21
270 Group Insurance – Self-Insurance	2,720,563.00	3,145,949.00		5,866,512.00
291 Other Retirement Plans	31,851.25	46,442.50		78,293.75
Total Personnel Services – Employee Benefits	\$8,231,118.21	\$9,475,370.17	\$157,201.12	\$17,863,689.50
300 <u>Purchased Professional and Technical Services</u>				
322 Professional Educational Services – lus		5,415.72		5,415.72
323 Professional Educational Services – Other Educational Agencies		2,359.37		2,359.37
329 Professional Educational Services – Other		1,595.00		1,595.00
330 Other Professional Services	5,328.75	3,958.31		9,287.06
390 Other Purchased Professional and Technical Services			382.69	382.69
Total Purchased Professional and Technical Services	\$5,328.75	\$13,328.40	\$382.69	\$19,039.84
400 <u>Purchased Property Services</u>				
430 Repairs and Maintenance Services		606.14		606.14
Total Purchased Property Services		\$606.14		\$606.14
500 <u>Other Purchased Services</u>				
510 Student Transportation Services	984.00	21,965.00	2,965.00	25,914.00
530 Communications	100.00	25.04		125.04
550 Printing and Binding	5,973.90			5,973.90
561 Tuition To Other School Districts Within the State		15,023.00		15,023.00
562 Tuition To Pennsylvania Charter Schools	1,937,250.20	903,415.51		2,840,665.71
568 Tuition To Private Residential Rehabilitative Institutions (PRRI) [In-State] and Detention Centers	128,880.50	1,309,139.40		1,438,019.90
580 Travel	1,313.84	1,027.18		2,341.02
Total Other Purchased Services	\$2,074,502.44	\$2,250,595.13	\$2,965.00	\$4,328,062.57
600 <u>Supplies</u>				
610 General Supplies	136,064.43	242,131.82	3,343.58	381,539.83
630 Food	179.90	2,171.80	2,210.97	4,562.67
640 Books and Periodicals	116,784.03	92,808.10		209,592.13
650 Supplies & Fees – Technology Related	17,637.00	44,140.05	6,514.88	68,291.93
Total Supplies	\$270,665.36	\$381,251.77	\$12,069.43	\$663,986.56
700 <u>Property</u>				
762 Capitalized Equipment - Replacement	2,513.98	13,028.96		15,542.94
Total Property	\$2,513.98	\$13,028.96		\$15,542.94
800 <u>Other Objects</u>				

LEA : 123467103 Souderton Area SD

Printed 10/29/2018 10:25:18 AM

General Fund (10)

1100 Regular Programs – Elementary / Secondary	<u>Elementary</u>	<u>Secondary</u>	<u>Federal</u>	<u>Total</u>
800 <u>Other Objects</u>				
810 Dues and Fees		136.00		136.00
890 Miscellaneous Expenditures	429.00	371.00		800.00
Total Other Objects	\$429.00	\$507.00		\$936.00
Total 1100 Regular Programs – Elementary / Secondary	\$24,173,201.98	\$27,722,568.76	\$565,810.41	\$52,461,581.15

LEA : 123467103 Souderton Area SD

Printed 10/29/2018 10:25:18 AM

General Fund (10)

1110 Regular Programs

	Elementary	Secondary	Federal	Total
100 Personnel Services – Salaries				
100 Personnel Services – Salaries	13,588,644.24	15,587,881.19	6,839.97	29,183,365.40
Total Personnel Services – Salaries	\$13,588,644.24	\$15,587,881.19	\$6,839.97	\$29,183,365.40
200 Personnel Services – Employee Benefits				
210 Group Insurance – Contracted Provider	26,604.49	30,279.73		56,884.22
220 Social Security Contributions	992,418.10	1,141,096.21	479.93	2,133,994.24
230 PSERS Retirement Contributions	4,413,794.97	5,058,714.24	2,155.89	9,474,665.10
250 Unemployment Compensation	656.11	3,199.57		3,855.68
260 Workers' Compensation	45,230.29	49,688.92		94,919.21
270 Group Insurance – Self-Insurance	2,720,563.00	3,145,949.00		5,866,512.00
291 Other Retirement Plans	31,851.25	46,442.50		78,293.75
Total Personnel Services – Employee Benefits	\$8,231,118.21	\$9,475,370.17	\$2,635.82	\$17,709,124.20
300 Purchased Professional and Technical Services				
322 Professional Educational Services – lus		5,415.72		5,415.72
323 Professional Educational Services – Other Educational Agencies		2,359.37		2,359.37
329 Professional Educational Services – Other		1,595.00		1,595.00
330 Other Professional Services	5,328.75	3,958.31		9,287.06
390 Other Purchased Professional and Technical Services			382.69	382.69
Total Purchased Professional and Technical Services	\$5,328.75	\$13,328.40	\$382.69	\$19,039.84
400 Purchased Property Services				
430 Repairs and Maintenance Services		606.14		606.14
Total Purchased Property Services		\$606.14		\$606.14
500 Other Purchased Services				
510 Student Transportation Services	984.00	21,965.00	2,965.00	25,914.00
530 Communications	100.00	25.04		125.04
550 Printing and Binding	5,973.90			5,973.90
561 Tuition To Other School Districts Within the State		15,023.00		15,023.00
562 Tuition To Pennsylvania Charter Schools	1,937,250.20	903,415.51		2,840,665.71
568 Tuition To Private Residential Rehabilitative Institutions (PRRI) [In-State] and Detention Centers	128,880.50	1,309,139.40		1,438,019.90
580 Travel	1,313.84	1,027.18		2,341.02
Total Other Purchased Services	\$2,074,502.44	\$2,250,595.13	\$2,965.00	\$4,328,062.57
600 Supplies				
610 General Supplies	136,064.43	242,131.82	2,363.09	380,559.34
630 Food	179.90	2,171.80	2,210.97	4,562.67
640 Books and Periodicals	116,784.03	92,808.10		209,592.13
650 Supplies & Fees – Technology Related	17,637.00	44,140.05		61,777.05
Total Supplies	\$270,665.36	\$381,251.77	\$4,574.06	\$656,491.19
700 Property				
762 Capitalized Equipment - Replacement	2,513.98	13,028.96		15,542.94
Total Property	\$2,513.98	\$13,028.96		\$15,542.94
800 Other Objects				

LEA : 123467103 Souderton Area SD

Printed 10/29/2018 10:25:18 AM

General Fund (10)				
1110 Regular Programs	<u>Elementary</u>	<u>Secondary</u>	<u>Federal</u>	<u>Total</u>
800 <u>Other Objects</u>				
810 Dues and Fees		136.00		136.00
890 Miscellaneous Expenditures	429.00	371.00		800.00
Total Other Objects	\$429.00	\$507.00		\$936.00
Total 1110 Regular Programs	\$24,173,201.98	\$27,722,568.76	\$17,397.54	\$51,913,168.28

LEA : 123467103 Souderton Area SD

Printed 10/29/2018 10:25:18 AM

General Fund (10)

1190 Federally-Funded Regular Programs

Elementary Secondary Federal Total

100 <u>Personnel Services – Salaries</u>				
100 Personnel Services – Salaries			386,352.20	386,352.20
Total Personnel Services – Salaries			\$386,352.20	\$386,352.20
200 <u>Personnel Services – Employee Benefits</u>				
220 Social Security Contributions			28,730.62	28,730.62
230 PSERS Retirement Contributions			125,834.68	125,834.68
Total Personnel Services – Employee Benefits			\$154,565.30	\$154,565.30
600 <u>Supplies</u>				
610 General Supplies			980.49	980.49
650 Supplies & Fees – Technology Related			6,514.88	6,514.88
Total Supplies			\$7,495.37	\$7,495.37
Total 1190 Federally-Funded Regular Programs			\$548,412.87	\$548,412.87

LEA : 123467103 Souderton Area SD

Printed 10/29/2018 10:25:18 AM

General Fund (10)

1200 Special Programs – Elementary / Secondary	Elementary	Secondary	Federal	Total
100 Personnel Services – Salaries				
100 Personnel Services – Salaries	3,654,458.11	4,323,906.36	851,603.46	8,829,967.93
Total Personnel Services – Salaries	\$3,654,458.11	\$4,323,906.36	\$851,603.46	\$8,829,967.93
200 Personnel Services – Employee Benefits				
210 Group Insurance – Contracted Provider	7,742.26	9,100.30		16,842.56
220 Social Security Contributions	267,588.66	316,066.51	60,296.07	643,951.24
230 PSERS Retirement Contributions	1,263,200.35	1,459,559.88	142,778.37	2,865,538.60
250 Unemployment Compensation	630.12	477.93		1,108.05
260 Workers' Compensation	14,361.64	16,279.08		30,640.72
270 Group Insurance – Self-Insurance	700,611.00	920,890.00		1,621,501.00
291 Other Retirement Plans	3,050.00	6,445.00		9,495.00
Total Personnel Services – Employee Benefits	\$2,257,184.03	\$2,728,818.70	\$203,074.44	\$5,189,077.17
300 Purchased Professional and Technical Services				
322 Professional Educational Services – Ius	577,055.42	48,784.45		625,839.87
323 Professional Educational Services – Other Educational Agencies	280.00	13,885.46		14,165.46
324 Professional Educational Services – Employee Training and Development Services	1,347.00	824.00		2,171.00
330 Other Professional Services	1,124,492.35	1,297,254.08	246,401.00	2,668,147.43
Total Purchased Professional and Technical Services	\$1,703,174.77	\$1,360,747.99	\$246,401.00	\$3,310,323.76
500 Other Purchased Services				
510 Student Transportation Services	732.84	2,680.80		3,413.64
530 Communications		5.79		5.79
550 Printing and Binding	125.00	50.04		175.04
561 Tuition To Other School Districts Within the State	1,026.56	27,420.00		28,446.56
562 Tuition To Pennsylvania Charter Schools	619,912.72	607,320.89		1,227,233.61
563 Tuition To Nonpublic Schools	726,094.29	1,720,634.49	2,674.00	2,449,402.78
566 Tuition To Institutions of Higher Education and Technical Institutes	775.00	8,775.00		9,550.00
567 Tuition To Approved Private Schools (APS) and PA Chartered Schools for the Deaf and Blind	166,270.00	157,238.74		323,508.74
568 Tuition To Private Residential Rehabilitative Institutions (PRRI) [In-State] and Detention Centers		4,178.72		4,178.72
569 Tuition – Other	294.00			294.00
580 Travel	1,896.43	1,324.63		3,221.06
Total Other Purchased Services	\$1,517,126.84	\$2,529,629.10	\$2,674.00	\$4,049,429.94
600 Supplies				
610 General Supplies	11,323.32	11,426.79		22,750.11
630 Food		61.32		61.32
640 Books and Periodicals	7,707.34	14,764.34		22,471.68
650 Supplies & Fees – Technology Related	24,290.89	21,622.17		45,913.06
Total Supplies	\$43,321.55	\$47,874.62		\$91,196.17
700 Property				
752 Capital Equipment – Original and Additional	5,252.50		2,675.00	7,927.50
Total Property	\$5,252.50		\$2,675.00	\$7,927.50
800 Other Objects				
810 Dues and Fees	623.00	382.00		1,005.00

LEA : 123467103 Souderton Area SD

Printed 10/29/2018 10:25:18 AM

General Fund (10)

1200 Special Programs – Elementary / Secondary	<u>Elementary</u>	<u>Secondary</u>	<u>Federal</u>	<u>Total</u>
800 <u>Other Objects</u>				
820 Claims and Judgments Against the LEA	120,959.80	105.99		121,065.79
890 Miscellaneous Expenditures		4,423.08		4,423.08
Total Other Objects	\$121,582.80	\$4,911.07		\$126,493.87
Total 1200 Special Programs – Elementary / Secondary	\$9,302,100.60	\$10,995,887.84	\$1,306,427.90	\$21,604,416.34

LEA : 123467103 Souderton Area SD

Printed 10/29/2018 10:25:18 AM

General Fund (10)

1210 Life Skills Support	Elementary	Secondary	Federal	Total
100 <u>Personnel Services – Salaries</u>				
100 Personnel Services – Salaries	239,568.84	536,404.93		775,973.77
Total Personnel Services – Salaries	\$239,568.84	\$536,404.93		\$775,973.77
200 <u>Personnel Services – Employee Benefits</u>				
210 Group Insurance – Contracted Provider	459.98	1,044.99		1,504.97
220 Social Security Contributions	17,766.99	39,815.95		57,582.94
230 PSERS Retirement Contributions	77,467.48	174,091.58		251,559.06
250 Unemployment Compensation	64.75	94.71		159.46
260 Workers' Compensation	760.20	1,697.32		2,457.52
270 Group Insurance – Self-Insurance	30,179.00	77,240.00		107,419.00
Total Personnel Services – Employee Benefits	\$126,698.40	\$293,984.55		\$420,682.95
300 <u>Purchased Professional and Technical Services</u>				
330 Other Professional Services	95,782.64	316,627.21	91,640.89	504,050.74
Total Purchased Professional and Technical Services	\$95,782.64	\$316,627.21	\$91,640.89	\$504,050.74
500 <u>Other Purchased Services</u>				
510 Student Transportation Services	53.33	913.33		966.66
580 Travel		153.82		153.82
Total Other Purchased Services	\$53.33	\$1,067.15		\$1,120.48
600 <u>Supplies</u>				
610 General Supplies	912.12	2,643.35		3,555.47
630 Food		61.32		61.32
640 Books and Periodicals	1,181.97	297.94		1,479.91
650 Supplies & Fees – Technology Related	3,139.00	1,711.00		4,850.00
Total Supplies	\$5,233.09	\$4,713.61		\$9,946.70
Total 1210 Life Skills Support	\$467,336.30	\$1,152,797.45	\$91,640.89	\$1,711,774.64

LEA : 123467103 Souderton Area SD

Printed 10/29/2018 10:25:18 AM

General Fund (10)

1220 Sensory Support

	Elementary	Secondary	Federal	Total
100 <u>Personnel Services – Salaries</u>				
100 Personnel Services – Salaries	564,916.40	87,732.28		652,648.68
Total Personnel Services – Salaries	\$564,916.40	\$87,732.28		\$652,648.68
200 <u>Personnel Services – Employee Benefits</u>				
210 Group Insurance – Contracted Provider	1,093.79	170.42		1,264.21
220 Social Security Contributions	41,244.88	6,518.98		47,763.86
230 PSERS Retirement Contributions	183,993.26	28,574.28		212,567.54
250 Unemployment Compensation		3.60		3.60
260 Workers' Compensation	1,796.73	277.35		2,074.08
270 Group Insurance – Self-Insurance	90,581.00	12,466.00		103,047.00
Total Personnel Services – Employee Benefits	\$318,709.66	\$48,010.63		\$366,720.29
300 <u>Purchased Professional and Technical Services</u>				
330 Other Professional Services	7,574.37	58,215.33		65,789.70
Total Purchased Professional and Technical Services	\$7,574.37	\$58,215.33		\$65,789.70
500 <u>Other Purchased Services</u>				
580 Travel	113.73			113.73
Total Other Purchased Services	\$113.73			\$113.73
600 <u>Supplies</u>				
610 General Supplies	3,652.40			3,652.40
640 Books and Periodicals	397.52	24.70		422.22
650 Supplies & Fees – Technology Related	24.99			24.99
Total Supplies	\$4,074.91	\$24.70		\$4,099.61
800 <u>Other Objects</u>				
810 Dues and Fees	445.00	267.00		712.00
Total Other Objects	\$445.00	\$267.00		\$712.00
Total 1220 Sensory Support	\$895,834.07	\$194,249.94		\$1,090,084.01

LEA : 123467103 Souderton Area SD

Printed 10/29/2018 10:25:18 AM

General Fund (10)

1230 Emotional Support

	Elementary	Secondary	Federal	Total
100 <u>Personnel Services – Salaries</u>				
100 Personnel Services – Salaries	295,260.07	220,698.22	851,603.46	1,367,561.75
Total Personnel Services – Salaries	\$295,260.07	\$220,698.22	\$851,603.46	\$1,367,561.75
200 <u>Personnel Services – Employee Benefits</u>				
210 Group Insurance – Contracted Provider	407.53	309.69		717.22
220 Social Security Contributions	22,162.14	15,861.28	60,296.07	98,319.49
230 PSERS Retirement Contributions	165,154.24	134,356.18	142,778.37	442,288.79
250 Unemployment Compensation	241.78	163.02		404.80
260 Workers' Compensation	3,604.82	3,105.66		6,710.48
270 Group Insurance – Self-Insurance	136,403.00	93,128.76		229,531.76
Total Personnel Services – Employee Benefits	\$327,973.51	\$246,924.59	\$203,074.44	\$777,972.54
300 <u>Purchased Professional and Technical Services</u>				
324 Professional Educational Services – Employee Training and Development Services	1,197.00			1,197.00
330 Other Professional Services	363,010.02	376,683.21	114,264.72	853,957.95
Total Purchased Professional and Technical Services	\$364,207.02	\$376,683.21	\$114,264.72	\$855,154.95
500 <u>Other Purchased Services</u>				
510 Student Transportation Services	166.68	368.33		535.01
Total Other Purchased Services	\$166.68	\$368.33		\$535.01
600 <u>Supplies</u>				
610 General Supplies	3,265.72	1,343.32		4,609.04
640 Books and Periodicals	2,628.84	2,761.98		5,390.82
650 Supplies & Fees – Technology Related	3,191.90	1,251.17		4,443.07
Total Supplies	\$9,086.46	\$5,356.47		\$14,442.93
Total 1230 Emotional Support	\$996,693.74	\$850,030.82	\$1,168,942.62	\$3,015,667.18

LEA : 123467103 Souderton Area SD

Printed 10/29/2018 10:25:18 AM

General Fund (10)

1240 Academic Support

	Elementary	Secondary	Federal	Total
100 <u>Personnel Services – Salaries</u>				
100 Personnel Services – Salaries	1,951,811.77	2,979,596.12		4,931,407.89
Total Personnel Services – Salaries	\$1,951,811.77	\$2,979,596.12		\$4,931,407.89
200 <u>Personnel Services – Employee Benefits</u>				
210 Group Insurance – Contracted Provider	3,791.85	5,827.08		9,618.93
220 Social Security Contributions	142,126.07	216,737.00		358,863.07
230 PSERS Retirement Contributions	641,745.95	961,790.65		1,603,536.60
250 Unemployment Compensation	305.33	187.75		493.08
260 Workers' Compensation	6,190.16	9,451.88		15,642.04
270 Group Insurance – Self-Insurance	328,159.54	690,743.24		1,018,902.78
291 Other Retirement Plans		895.00		895.00
Total Personnel Services – Employee Benefits	\$1,122,318.90	\$1,885,632.60		\$3,007,951.50
300 <u>Purchased Professional and Technical Services</u>				
324 Professional Educational Services – Employee Training and Development Services		399.00		399.00
330 Other Professional Services	257,220.24	291,995.20	22,922.89	572,138.33
Total Purchased Professional and Technical Services	\$257,220.24	\$292,394.20	\$22,922.89	\$572,537.33
500 <u>Other Purchased Services</u>				
510 Student Transportation Services		736.26		736.26
566 Tuition To Institutions of Higher Education and Technical Institutes	775.00			775.00
569 Tuition – Other	294.00			294.00
580 Travel	15.70			15.70
Total Other Purchased Services	\$1,084.70	\$736.26		\$1,820.96
600 <u>Supplies</u>				
610 General Supplies	1,321.03	1,757.07		3,078.10
640 Books and Periodicals	2,507.91	11,679.72		14,187.63
650 Supplies & Fees – Technology Related	3,250.00	5,250.00		8,500.00
Total Supplies	\$7,078.94	\$18,686.79		\$25,765.73
700 <u>Property</u>				
752 Capital Equipment – Original and Additional	5,252.50			5,252.50
Total Property	\$5,252.50			\$5,252.50
Total 1240 Academic Support	\$3,344,767.05	\$5,177,045.97	\$22,922.89	\$8,544,735.91

LEA : 123467103 Souderton Area SD

Printed 10/29/2018 10:25:18 AM

General Fund (10)

1241 Learning Support – Public	Elementary	Secondary	Federal	Total
100 <u>Personnel Services – Salaries</u>				
100 Personnel Services – Salaries	1,732,194.93	2,685,129.36		4,417,324.29
Total Personnel Services – Salaries	\$1,732,194.93	\$2,685,129.36		\$4,417,324.29
200 <u>Personnel Services – Employee Benefits</u>				
210 Group Insurance – Contracted Provider	3,363.46	5,253.76		8,617.22
220 Social Security Contributions	127,129.03	194,739.56		321,868.59
230 PSERS Retirement Contributions	562,169.99	865,883.04		1,428,053.03
250 Unemployment Compensation	293.31	187.75		481.06
260 Workers' Compensation	5,494.84	8,516.00		14,010.84
270 Group Insurance – Self-Insurance	285,756.54	643,427.24		929,183.78
291 Other Retirement Plans		895.00		895.00
Total Personnel Services – Employee Benefits	\$984,207.17	\$1,718,902.35		\$2,703,109.52
300 <u>Purchased Professional and Technical Services</u>				
324 Professional Educational Services – Employee Training and Development Services		399.00		399.00
330 Other Professional Services	257,220.24	291,926.53	22,922.89	572,069.66
Total Purchased Professional and Technical Services	\$257,220.24	\$292,325.53	\$22,922.89	\$572,468.66
500 <u>Other Purchased Services</u>				
510 Student Transportation Services		300.00		300.00
580 Travel	15.70			15.70
Total Other Purchased Services	\$15.70	\$300.00		\$315.70
600 <u>Supplies</u>				
610 General Supplies	1,321.03	1,757.07		3,078.10
640 Books and Periodicals	2,507.91	11,679.72		14,187.63
650 Supplies & Fees – Technology Related	3,250.00	5,250.00		8,500.00
Total Supplies	\$7,078.94	\$18,686.79		\$25,765.73
700 <u>Property</u>				
752 Capital Equipment – Original and Additional	5,252.50			5,252.50
Total Property	\$5,252.50			\$5,252.50
Total 1241 Learning Support – Public	\$2,985,969.48	\$4,715,344.03	\$22,922.89	\$7,724,236.40

LEA : 123467103 Souderton Area SD

Printed 10/29/2018 10:25:18 AM

General Fund (10)

1243 Gifted Support

	Elementary	Secondary	Federal	Total
100 <u>Personnel Services – Salaries</u>				
100 Personnel Services – Salaries	219,616.84	294,466.76		514,083.60
Total Personnel Services – Salaries	\$219,616.84	\$294,466.76		\$514,083.60
200 <u>Personnel Services – Employee Benefits</u>				
210 Group Insurance – Contracted Provider	428.39	573.32		1,001.71
220 Social Security Contributions	14,997.04	21,997.44		36,994.48
230 PSERS Retirement Contributions	79,575.96	95,907.61		175,483.57
250 Unemployment Compensation	12.02			12.02
260 Workers' Compensation	695.32	935.88		1,631.20
270 Group Insurance – Self-Insurance	42,403.00	47,316.00		89,719.00
Total Personnel Services – Employee Benefits	\$138,111.73	\$166,730.25		\$304,841.98
300 <u>Purchased Professional and Technical Services</u>				
330 Other Professional Services		68.67		68.67
Total Purchased Professional and Technical Services		\$68.67		\$68.67
500 <u>Other Purchased Services</u>				
510 Student Transportation Services		436.26		436.26
566 Tuition To Institutions of Higher Education and Technical Institutes	775.00			775.00
569 Tuition – Other	294.00			294.00
Total Other Purchased Services	\$1,069.00	\$436.26		\$1,505.26
Total 1243 Gifted Support	\$358,797.57	\$461,701.94		\$820,499.51

LEA : 123467103 Souderton Area SD

Printed 10/29/2018 10:25:18 AM

General Fund (10)

1260 Physical Support

	<u>Elementary</u>	<u>Secondary</u>	<u>Federal</u>	<u>Total</u>
100 <u>Personnel Services – Salaries</u>				
100 Personnel Services – Salaries	194,684.10	80,299.90		274,984.00
Total Personnel Services – Salaries	\$194,684.10	\$80,299.90		\$274,984.00
200 <u>Personnel Services – Employee Benefits</u>				
210 Group Insurance – Contracted Provider	386.05	154.76		540.81
220 Social Security Contributions	14,232.37	5,862.11		20,094.48
230 PSERS Retirement Contributions	63,408.56	26,153.64		89,562.20
260 Workers' Compensation	615.05	259.24		874.29
270 Group Insurance – Self-Insurance	7,478.42	3,205.00		10,683.42
Total Personnel Services – Employee Benefits	\$86,120.45	\$35,634.75		\$121,755.20
300 <u>Purchased Professional and Technical Services</u>				
330 Other Professional Services	225,837.25	6,618.50		232,455.75
Total Purchased Professional and Technical Services	\$225,837.25	\$6,618.50		\$232,455.75
Total 1260 Physical Support	\$506,641.80	\$122,553.15		\$629,194.95

LEA : 123467103 Souderton Area SD

Printed 10/29/2018 10:25:18 AM

General Fund (10)				
1270 Multi-Handicapped Support	<u>Elementary</u>	<u>Secondary</u>	<u>Federal</u>	<u>Total</u>
100 <u>Personnel Services – Salaries</u>				
100 Personnel Services – Salaries	152,290.86	89,658.17		241,949.03
Total Personnel Services – Salaries	\$152,290.86	\$89,658.17		\$241,949.03
200 <u>Personnel Services – Employee Benefits</u>				
210 Group Insurance – Contracted Provider	296.04	171.73		467.77
220 Social Security Contributions	11,316.72	6,316.81		17,633.53
230 PSERS Retirement Contributions	49,545.60	28,792.96		78,338.56
250 Unemployment Compensation	17.76	19.39		37.15
260 Workers' Compensation	484.44	287.93		772.37
270 Group Insurance – Self-Insurance	26,751.00	1,943.00		28,694.00
Total Personnel Services – Employee Benefits	\$88,411.56	\$37,531.82		\$125,943.38
300 <u>Purchased Professional and Technical Services</u>				
330 Other Professional Services	39,442.50	50,221.95	17,572.50	107,236.95
Total Purchased Professional and Technical Services	\$39,442.50	\$50,221.95	\$17,572.50	\$107,236.95
500 <u>Other Purchased Services</u>				
510 Student Transportation Services	420.33	305.00		725.33
Total Other Purchased Services	\$420.33	\$305.00		\$725.33
600 <u>Supplies</u>				
610 General Supplies	522.55	742.79		1,265.34
640 Books and Periodicals	985.22			985.22
650 Supplies & Fees – Technology Related	1,410.00	135.00		1,545.00
Total Supplies	\$2,917.77	\$877.79		\$3,795.56
Total 1270 Multi-Handicapped Support	\$283,483.02	\$178,594.73	\$17,572.50	\$479,650.25

LEA : 123467103 Souderton Area SD

Printed 10/29/2018 10:25:18 AM

General Fund (10)

1290 Special Programs - Other Support	Elementary	Secondary	Federal	Total
100 Personnel Services – Salaries				
100 Personnel Services – Salaries	255,926.07	329,516.74		585,442.81
Total Personnel Services – Salaries	\$255,926.07	\$329,516.74		\$585,442.81
200 Personnel Services – Employee Benefits				
210 Group Insurance – Contracted Provider	1,307.02	1,421.63		2,728.65
220 Social Security Contributions	18,739.49	24,954.38		43,693.87
230 PSERS Retirement Contributions	81,885.26	105,800.59		187,685.85
250 Unemployment Compensation	0.50	9.46		9.96
260 Workers' Compensation	910.24	1,199.70		2,109.94
270 Group Insurance – Self-Insurance	81,059.04	42,164.00		123,223.04
291 Other Retirement Plans	3,050.00	5,550.00		8,600.00
Total Personnel Services – Employee Benefits	\$186,951.55	\$181,099.76		\$368,051.31
300 Purchased Professional and Technical Services				
322 Professional Educational Services – Ius	577,055.42	48,784.45		625,839.87
323 Professional Educational Services – Other Educational Agencies	280.00	13,885.46		14,165.46
324 Professional Educational Services – Employee Training and Development Services	150.00	425.00		575.00
330 Other Professional Services	135,625.33	196,892.68		332,518.01
Total Purchased Professional and Technical Services	\$713,110.75	\$259,987.59		\$973,098.34
500 Other Purchased Services				
510 Student Transportation Services	92.50	357.88		450.38
530 Communications		5.79		5.79
550 Printing and Binding	125.00	50.04		175.04
561 Tuition To Other School Districts Within the State	1,026.56	27,420.00		28,446.56
562 Tuition To Pennsylvania Charter Schools	619,912.72	607,320.89		1,227,233.61
563 Tuition To Nonpublic Schools	726,094.29	1,720,634.49	2,674.00	2,449,402.78
566 Tuition To Institutions of Higher Education and Technical Institutes		8,775.00		8,775.00
567 Tuition To Approved Private Schools (APS) and PA Chartered Schools for the Deaf and Blind	166,270.00	157,238.74		323,508.74
568 Tuition To Private Residential Rehabilitative Institutions (PRRI) [In-State] and Detention Centers		4,178.72		4,178.72
580 Travel	1,767.00	1,170.81		2,937.81
Total Other Purchased Services	\$1,515,288.07	\$2,527,152.36	\$2,674.00	\$4,045,114.43
600 Supplies				
610 General Supplies	1,649.50	4,940.26		6,589.76
640 Books and Periodicals	5.88			5.88
650 Supplies & Fees – Technology Related	13,275.00	13,275.00		26,550.00
Total Supplies	\$14,930.38	\$18,215.26		\$33,145.64
700 Property				
752 Capital Equipment – Original and Additional			2,675.00	2,675.00
Total Property			\$2,675.00	\$2,675.00
800 Other Objects				
810 Dues and Fees	178.00	115.00		293.00
820 Claims and Judgments Against the LEA	120,959.80	105.99		121,065.79
890 Miscellaneous Expenditures		4,423.08		4,423.08

LEA : 123467103 Souderton Area SD

Printed 10/29/2018 10:25:18 AM

General Fund (10)

1290 Special Programs - Other Support

	<u>Elementary</u>	<u>Secondary</u>	<u>Federal</u>	<u>Total</u>
Total Other Objects	\$121,137.80	\$4,644.07		\$125,781.87
Total 1290 Special Programs - Other Support	\$2,807,344.62	\$3,320,615.78	\$5,349.00	\$6,133,309.40

LEA : 123467103 Souderton Area SD

Printed 10/29/2018 10:25:18 AM

General Fund (10)

1300 Vocational Education

500 Other Purchased Services

	<u>Elementary</u>	<u>Secondary</u>	<u>Federal</u>	<u>Total</u>
564 Tuition To Career and Technology Centers		2,224,176.38		2,224,176.38
Total Other Purchased Services		\$2,224,176.38		\$2,224,176.38
Total 1300 Vocational Education		\$2,224,176.38		\$2,224,176.38

LEA : 123467103 Souderton Area SD

Printed 10/29/2018 10:25:18 AM

General Fund (10)

1400 Other Instructional Programs – Elementary / Secondary	Elementary	Secondary	Federal	Total
100 Personnel Services – Salaries				
100 Personnel Services – Salaries	232,218.69	660.00		232,878.69
Total Personnel Services – Salaries	\$232,218.69	\$660.00		\$232,878.69
200 Personnel Services – Employee Benefits				
210 Group Insurance – Contracted Provider	401.46			401.46
220 Social Security Contributions	16,716.43	49.12		16,765.55
230 PSERS Retirement Contributions	41,544.31	214.96		41,759.27
250 Unemployment Compensation	151.68			151.68
260 Workers' Compensation	949.57	3.56		953.13
291 Other Retirement Plans	1,800.00			1,800.00
Total Personnel Services – Employee Benefits	\$61,563.45	\$267.64		\$61,831.09
300 Purchased Professional and Technical Services				
322 Professional Educational Services – Ius		42,351.89		42,351.89
323 Professional Educational Services – Other Educational Agencies	1,586.59	103,258.87		104,845.46
390 Other Purchased Professional and Technical Services	23,856.26			23,856.26
Total Purchased Professional and Technical Services	\$25,442.85	\$145,610.76		\$171,053.61
400 Purchased Property Services				
440 Rentals	402.88			402.88
Total Purchased Property Services	\$402.88			\$402.88
500 Other Purchased Services				
510 Student Transportation Services	9,407.75			9,407.75
530 Communications	577.06			577.06
550 Printing and Binding	3,321.18			3,321.18
561 Tuition To Other School Districts Within the State		32,173.55		32,173.55
568 Tuition To Private Residential Rehabilitative Institutions (PRRI) [In-State] and Detention Centers		30,462.00		30,462.00
580 Travel	422.78			422.78
599 Other Miscellaneous Purchased Services	8,220.85			8,220.85
Total Other Purchased Services	\$21,949.62	\$62,635.55		\$84,585.17
600 Supplies				
610 General Supplies	5,846.50			5,846.50
630 Food	24,351.15			24,351.15
640 Books and Periodicals	720.00			720.00
Total Supplies	\$30,917.65			\$30,917.65
800 Other Objects				
810 Dues and Fees	9,432.99			9,432.99
Total Other Objects	\$9,432.99			\$9,432.99
Total 1400 Other Instructional Programs – Elementary / Secondary	\$381,928.13	\$209,173.95		\$591,102.08

LEA : 123467103 Souderton Area SD

Printed 10/29/2018 10:25:18 AM

General Fund (10)

1430 Homebound Instruction	Elementary	Secondary	Federal	Total
100 <u>Personnel Services – Salaries</u>				
100 Personnel Services – Salaries	7,520.00	660.00		8,180.00
Total Personnel Services – Salaries	\$7,520.00	\$660.00		\$8,180.00
200 <u>Personnel Services – Employee Benefits</u>				
220 Social Security Contributions	486.95	49.12		536.07
230 PSERS Retirement Contributions	2,071.45	214.96		2,286.41
250 Unemployment Compensation	4.32			4.32
260 Workers' Compensation	34.34	3.56		37.90
Total Personnel Services – Employee Benefits	\$2,597.06	\$267.64		\$2,864.70
300 <u>Purchased Professional and Technical Services</u>				
323 Professional Educational Services – Other Educational Agencies	1,586.59	103,258.87		104,845.46
Total Purchased Professional and Technical Services	\$1,586.59	\$103,258.87		\$104,845.46
Total 1430 Homebound Instruction	\$11,703.65	\$104,186.51		\$115,890.16

LEA : 123467103 Souderton Area SD

Printed 10/29/2018 10:25:18 AM

General Fund (10)

1440 Alternative Regular Education Programs	<u>Elementary</u>	<u>Secondary</u>	<u>Federal</u>	<u>Total</u>
300 <u>Purchased Professional and Technical Services</u>				
322 Professional Educational Services – Ius		42,351.89		42,351.89
Total Purchased Professional and Technical Services		\$42,351.89		\$42,351.89
500 <u>Other Purchased Services</u>				
561 Tuition To Other School Districts Within the State		32,173.55		32,173.55
568 Tuition To Private Residential Rehabilitative Institutions (PRRI) [In-State] and Detention Centers		30,462.00		30,462.00
Total Other Purchased Services		\$62,635.55		\$62,635.55
Total 1440 Alternative Regular Education Programs		\$104,987.44		\$104,987.44

LEA : 123467103 Souderton Area SD

Printed 10/29/2018 10:25:18 AM

General Fund (10)

1441 Adjudicated / Court-Placed Programs	<u>Elementary</u>	<u>Secondary</u>	<u>Federal</u>	<u>Total</u>
300 <u>Purchased Professional and Technical Services</u>				
322 Professional Educational Services – Ius		42,351.89		42,351.89
Total Purchased Professional and Technical Services		\$42,351.89		\$42,351.89
500 <u>Other Purchased Services</u>				
561 Tuition To Other School Districts Within the State		32,173.55		32,173.55
568 Tuition To Private Residential Rehabilitative Institutions (PRRI) [In-State] and Detention Centers		30,462.00		30,462.00
Total Other Purchased Services		\$62,635.55		\$62,635.55
Total 1441 Adjudicated / Court-Placed Programs		\$104,987.44		\$104,987.44

LEA : 123467103 Souderton Area SD

Printed 10/29/2018 10:25:18 AM

General Fund (10)				
1490 Additional Other Instructional Programs	<u>Elementary</u>	<u>Secondary</u>	<u>Federal</u>	<u>Total</u>
100 <u>Personnel Services – Salaries</u>				
100 Personnel Services – Salaries	224,698.69			224,698.69
Total Personnel Services – Salaries	\$224,698.69			\$224,698.69
200 <u>Personnel Services – Employee Benefits</u>				
210 Group Insurance – Contracted Provider	401.46			401.46
220 Social Security Contributions	16,229.48			16,229.48
230 PSERS Retirement Contributions	39,472.86			39,472.86
250 Unemployment Compensation	147.36			147.36
260 Workers' Compensation	915.23			915.23
291 Other Retirement Plans	1,800.00			1,800.00
Total Personnel Services – Employee Benefits	\$58,966.39			\$58,966.39
300 <u>Purchased Professional and Technical Services</u>				
390 Other Purchased Professional and Technical Services	23,856.26			23,856.26
Total Purchased Professional and Technical Services	\$23,856.26			\$23,856.26
400 <u>Purchased Property Services</u>				
440 Rentals	402.88			402.88
Total Purchased Property Services	\$402.88			\$402.88
500 <u>Other Purchased Services</u>				
510 Student Transportation Services	9,407.75			9,407.75
530 Communications	577.06			577.06
550 Printing and Binding	3,321.18			3,321.18
580 Travel	422.78			422.78
599 Other Miscellaneous Purchased Services	8,220.85			8,220.85
Total Other Purchased Services	\$21,949.62			\$21,949.62
600 <u>Supplies</u>				
610 General Supplies	5,846.50			5,846.50
630 Food	24,351.15			24,351.15
640 Books and Periodicals	720.00			720.00
Total Supplies	\$30,917.65			\$30,917.65
800 <u>Other Objects</u>				
810 Dues and Fees	9,432.99			9,432.99
Total Other Objects	\$9,432.99			\$9,432.99
Total 1490 Additional Other Instructional Programs	\$370,224.48			\$370,224.48

LEA : 123467103 Souderton Area SD

Printed 10/29/2018 10:25:18 AM

General Fund (10)

1500 Nonpublic School Programs	<u>Elementary</u>	<u>Secondary</u>	<u>Federal</u>	<u>Total</u>
100 <u>Personnel Services – Salaries</u>				
100 Personnel Services – Salaries			124.00	124.00
Total Personnel Services – Salaries			\$124.00	\$124.00
300 <u>Purchased Professional and Technical Services</u>				
322 Professional Educational Services – Ius			5,886.72	5,886.72
Total Purchased Professional and Technical Services			\$5,886.72	\$5,886.72
Total 1500 Nonpublic School Programs			\$6,010.72	\$6,010.72

LEA : 123467103 Souderton Area SD

Printed 10/29/2018 10:25:18 AM

General Fund (10)				
1600 Adult Education Programs	Elementary	Secondary	Federal	Total
100 Personnel Services – Salaries				
100 Personnel Services – Salaries				74,768.65
Total Personnel Services – Salaries				\$74,768.65
200 Personnel Services – Employee Benefits				
210 Group Insurance – Contracted Provider				288.81
220 Social Security Contributions				5,583.13
230 PSERS Retirement Contributions				18,488.37
240 Tuition Reimbursement				30.40
250 Unemployment Compensation				236.45
291 Other Retirement Plans				1,800.00
Total Personnel Services – Employee Benefits				\$26,427.16
300 Purchased Professional and Technical Services				
330 Other Professional Services				49,488.50
Total Purchased Professional and Technical Services				\$49,488.50
500 Other Purchased Services				
530 Communications				340.00
550 Printing and Binding				25,118.76
580 Travel				146.29
599 Other Miscellaneous Purchased Services				13,813.36
Total Other Purchased Services				\$39,418.41
600 Supplies				
610 General Supplies				1,445.00
630 Food				1,662.00
Total Supplies				\$3,107.00
800 Other Objects				
810 Dues and Fees				4,673.94
Total Other Objects				\$4,673.94
Total 1600 Adult Education Programs				\$197,883.66

LEA : 123467103 Souderton Area SD

Printed 10/29/2018 10:25:21 AM

General Fund (10)

2000 Support Services

	Total
100 Personnel Services – Salaries	
100 Personnel Services – Salaries	13,307,244.10
Total Personnel Services – Salaries	\$13,307,244.10
200 Personnel Services – Employee Benefits	
210 Group Insurance – Contracted Provider	42,351.41
220 Social Security Contributions	968,045.48
230 PSERS Retirement Contributions	4,244,007.20
240 Tuition Reimbursement	217,978.43
250 Unemployment Compensation	993.24
260 Workers' Compensation	45,610.52
270 Group Insurance – Self-Insurance	2,837,077.00
291 Other Retirement Plans	92,536.42
299 All Other Employee Benefits	44,203.21
Total Personnel Services – Employee Benefits	\$8,492,802.91
300 Purchased Professional and Technical Services	
322 Professional Educational Services – Ius	6,340.00
324 Professional Educational Services – Employee Training and Development Services	18,514.11
329 Professional Educational Services – Other	16,431.23
330 Other Professional Services	886,874.90
340 Technical Services	52,568.00
350 Security / Safety Services	31,647.04
Total Purchased Professional and Technical Services	\$1,012,375.28
400 Purchased Property Services	
410 Cleaning Services	296,491.50
420 Utility Services	142,804.96
430 Repairs and Maintenance Services	524,827.85
440 Rentals	302,982.60
460 Extermination Services	5,232.60
Total Purchased Property Services	\$1,272,339.51
500 Other Purchased Services	
510 Student Transportation Services	400.00
511 Student Transportation Services from Another LEA Within the State	5,398.65
513 Contracted Carriers	7,074,060.61
516 Student Transportation Services From the IU	597,534.07
519 Student Transportation Services From Other Sources	35,884.26
520 Insurance – General	66,170.00
522 Automotive Liability Insurance	19,719.00
523 General Property and Liability Insurance	175,963.00
530 Communications	570,334.38
549 Other Advertising/Public Relations	3,615.73
550 Printing and Binding	46,259.52
580 Travel	20,042.36
595 IU Payments By Withholding	82,599.22
Total Other Purchased Services	\$8,697,980.80

LEA : 123467103 Souderton Area SD

Printed 10/29/2018 10:25:21 AM

General Fund (10)

2000 Support Services

Total

600	<u>Supplies</u>	
610	General Supplies	377,368.61
620	Energy	1,275,914.78
630	Food	14,471.94
640	Books and Periodicals	45,296.26
650	Supplies & Fees – Technology Related	516,406.54
Total Supplies		\$2,229,458.13
700	<u>Property</u>	
752	Capital Equipment – Original and Additional	5,527.64
758	Capitalized Technology Software - Original	559,874.23
766	Capitalized Technology Hardware and Equipment– Replacement	91,732.01
Total Property		\$657,133.88
800	<u>Other Objects</u>	
810	Dues and Fees	53,421.11
820	Claims and Judgments Against the LEA	120,000.00
890	Miscellaneous Expenditures	120,384.67
Total Other Objects		\$293,805.78
Total 2000 Support Services		\$35,963,140.39

LEA : 123467103 Souderton Area SD

Printed 10/29/2018 10:25:21 AM

General Fund (10)

2100 Support Services – Students	Elementary	Secondary	Federal	Total
100 <u>Personnel Services – Salaries</u>				
100 Personnel Services – Salaries	886,279.89	1,157,534.49	53,407.00	2,503,444.55
Total Personnel Services – Salaries	\$886,279.89	\$1,157,534.49	\$53,407.00	\$2,503,444.55
200 <u>Personnel Services – Employee Benefits</u>				
210 Group Insurance – Contracted Provider	2,175.57	2,696.62		5,656.38
220 Social Security Contributions	64,379.64	85,173.81	3,801.87	183,092.96
230 PSERS Retirement Contributions	287,522.25	382,763.75	8,697.33	807,332.02
250 Unemployment Compensation	47.82	48.73		179.67
260 Workers' Compensation	2,818.34	3,850.72		7,957.90
270 Group Insurance – Self-Insurance	161,590.50	209,555.50		477,939.00
291 Other Retirement Plans	3,300.00	3,300.00		7,320.00
Total Personnel Services – Employee Benefits	\$521,834.12	\$687,389.13	\$12,499.20	\$1,489,477.93
300 <u>Purchased Professional and Technical Services</u>				
324 Professional Educational Services – Employee Training and Development Services	531.50	531.50		1,953.00
330 Other Professional Services	13,797.00	15,912.78		503,425.14
Total Purchased Professional and Technical Services	\$14,328.50	\$16,444.28		\$505,378.14
500 <u>Other Purchased Services</u>				
510 Student Transportation Services	400.00			400.00
530 Communications	24.50	24.50		49.00
549 Other Advertising/Public Relations	27.36	27.35		351.37
550 Printing and Binding	277.85	375.85		653.70
580 Travel	758.34	451.38		2,536.90
Total Other Purchased Services	\$1,488.05	\$879.08		\$3,990.97
600 <u>Supplies</u>				
610 General Supplies	20,144.56	34.45	100.00	20,360.53
630 Food	126.00			126.00
640 Books and Periodicals	1,415.17	244.35		1,659.52
650 Supplies & Fees – Technology Related		1,740.80		1,740.80
Total Supplies	\$21,685.73	\$2,019.60	\$100.00	\$23,886.85
800 <u>Other Objects</u>				
810 Dues and Fees	807.50	807.49		1,614.99
890 Miscellaneous Expenditures		97,114.00	280.00	97,394.00
Total Other Objects	\$807.50	\$97,921.49	\$280.00	\$99,008.99
Total 2100 Support Services – Students	\$1,446,423.79	\$1,962,188.07	\$66,286.20	\$4,625,187.43

LEA : 123467103 Souderton Area SD

Printed 10/29/2018 10:25:21 AM

General Fund (10)

2110 Supervision of Student Services	Elementary	Secondary	Federal	Total
100 <u>Personnel Services – Salaries</u>				
100 Personnel Services – Salaries	100,965.01	100,965.01		201,930.02
Total Personnel Services – Salaries	\$100,965.01	\$100,965.01		\$201,930.02
200 <u>Personnel Services – Employee Benefits</u>				
210 Group Insurance – Contracted Provider	642.24	642.24		1,284.48
220 Social Security Contributions	7,145.35	7,145.34		14,290.69
230 PSERS Retirement Contributions	31,745.21	31,745.20		63,490.41
260 Workers' Compensation	321.77	321.76		643.53
270 Group Insurance – Self-Insurance	19,312.50	19,312.50		38,625.00
291 Other Retirement Plans	3,300.00	3,300.00		6,600.00
Total Personnel Services – Employee Benefits	\$62,467.07	\$62,467.04		\$124,934.11
300 <u>Purchased Professional and Technical Services</u>				
324 Professional Educational Services – Employee Training and Development Services	531.50	531.50		1,063.00
Total Purchased Professional and Technical Services	\$531.50	\$531.50		\$1,063.00
500 <u>Other Purchased Services</u>				
530 Communications	24.50	24.50		49.00
549 Other Advertising/Public Relations	27.36	27.35		54.71
550 Printing and Binding	277.85	277.85		555.70
580 Travel	451.39	451.38		902.77
Total Other Purchased Services	\$781.10	\$781.08		\$1,562.18
600 <u>Supplies</u>				
610 General Supplies	15.47	15.46		30.93
640 Books and Periodicals	244.35	244.35		488.70
Total Supplies	\$259.82	\$259.81		\$519.63
800 <u>Other Objects</u>				
810 Dues and Fees	807.50	807.49		1,614.99
Total Other Objects	\$807.50	\$807.49		\$1,614.99
Total 2110 Supervision of Student Services	\$165,812.00	\$165,811.93		\$331,623.93

LEA : 123467103 Souderton Area SD

Printed 10/29/2018 10:25:21 AM

General Fund (10)

2111 Supervision of Student Services – Head of Component	Elementary	Secondary	Federal	Total
100 Personnel Services – Salaries				
100 Personnel Services – Salaries	100,965.01	100,965.01		201,930.02
Total Personnel Services – Salaries	\$100,965.01	\$100,965.01		\$201,930.02
200 Personnel Services – Employee Benefits				
210 Group Insurance – Contracted Provider	642.24	642.24		1,284.48
220 Social Security Contributions	7,145.35	7,145.34		14,290.69
230 PSERS Retirement Contributions	31,745.21	31,745.20		63,490.41
260 Workers' Compensation	321.77	321.76		643.53
270 Group Insurance – Self-Insurance	19,312.50	19,312.50		38,625.00
291 Other Retirement Plans	3,300.00	3,300.00		6,600.00
Total Personnel Services – Employee Benefits	\$62,467.07	\$62,467.04		\$124,934.11
300 Purchased Professional and Technical Services				
324 Professional Educational Services – Employee Training and Development Services	531.50	531.50		1,063.00
Total Purchased Professional and Technical Services	\$531.50	\$531.50		\$1,063.00
500 Other Purchased Services				
530 Communications	24.50	24.50		49.00
549 Other Advertising/Public Relations	27.36	27.35		54.71
550 Printing and Binding	277.85	277.85		555.70
580 Travel	451.39	451.38		902.77
Total Other Purchased Services	\$781.10	\$781.08		\$1,562.18
600 Supplies				
610 General Supplies	15.47	15.46		30.93
640 Books and Periodicals	244.35	244.35		488.70
Total Supplies	\$259.82	\$259.81		\$519.63
800 Other Objects				
810 Dues and Fees	807.50	807.49		1,614.99
Total Other Objects	\$807.50	\$807.49		\$1,614.99
Total 2111 Supervision of Student Services – Head of Component	\$165,812.00	\$165,811.93		\$331,623.93

LEA : 123467103 Souderton Area SD

Printed 10/29/2018 10:25:21 AM

General Fund (10)

2120 Guidance Services	Elementary	Secondary	Federal	Total
100 <u>Personnel Services – Salaries</u>				
100 Personnel Services – Salaries	426,000.75	851,628.52		1,277,629.27
Total Personnel Services – Salaries	\$426,000.75	\$851,628.52		\$1,277,629.27
200 <u>Personnel Services – Employee Benefits</u>				
210 Group Insurance – Contracted Provider	837.73	1,656.67		2,494.40
220 Social Security Contributions	30,726.02	62,994.40		93,720.42
230 PSERS Retirement Contributions	138,748.44	275,506.92		414,255.36
250 Unemployment Compensation	19.34	25.95		45.29
260 Workers' Compensation	1,352.11	2,701.58		4,053.69
270 Group Insurance – Self-Insurance	90,497.00	164,099.00		254,596.00
Total Personnel Services – Employee Benefits	\$262,180.64	\$506,984.52		\$769,165.16
500 <u>Other Purchased Services</u>				
510 Student Transportation Services	400.00			400.00
550 Printing and Binding		98.00		98.00
Total Other Purchased Services	\$400.00	\$98.00		\$498.00
600 <u>Supplies</u>				
610 General Supplies	1,147.14	18.99		1,166.13
630 Food	126.00			126.00
640 Books and Periodicals	1,170.82			1,170.82
650 Supplies & Fees – Technology Related		1,740.80		1,740.80
Total Supplies	\$2,443.96	\$1,759.79		\$4,203.75
800 <u>Other Objects</u>				
890 Miscellaneous Expenditures		97,114.00		97,114.00
Total Other Objects		\$97,114.00		\$97,114.00
Total 2120 Guidance Services	\$691,025.35	\$1,457,584.83		\$2,148,610.18

LEA : 123467103 Souderton Area SD

Printed 10/29/2018 10:25:21 AM

General Fund (10)				
2130 Attendance Services	<u>Elementary</u>	<u>Secondary</u>	<u>Federal</u>	<u>Total</u>
100 <u>Personnel Services – Salaries</u>				
100 Personnel Services – Salaries				406,223.17
Total Personnel Services – Salaries				\$406,223.17
200 <u>Personnel Services – Employee Benefits</u>				
210 Group Insurance – Contracted Provider				784.19
220 Social Security Contributions				29,737.64
230 PSERS Retirement Contributions				128,348.69
250 Unemployment Compensation				83.12
260 Workers' Compensation				1,288.84
270 Group Insurance – Self-Insurance				106,793.00
291 Other Retirement Plans				720.00
Total Personnel Services – Employee Benefits				\$267,755.48
300 <u>Purchased Professional and Technical Services</u>				
324 Professional Educational Services – Employee Training and Development Services				890.00
Total Purchased Professional and Technical Services				\$890.00
500 <u>Other Purchased Services</u>				
549 Other Advertising/Public Relations				296.66
580 Travel				1,327.18
Total Other Purchased Services				\$1,623.84
600 <u>Supplies</u>				
610 General Supplies				81.52
Total Supplies				\$81.52
Total 2130 Attendance Services				\$676,574.01

LEA : 123467103 Souderton Area SD

Printed 10/29/2018 10:25:21 AM

General Fund (10)				
2140 Psychological Services	<u>Elementary</u>	<u>Secondary</u>	<u>Federal</u>	<u>Total</u>
100 <u>Personnel Services – Salaries</u>				
100 Personnel Services – Salaries	359,314.13	204,940.96	53,407.00	617,662.09
Total Personnel Services – Salaries	\$359,314.13	\$204,940.96	\$53,407.00	\$617,662.09
200 <u>Personnel Services – Employee Benefits</u>				
210 Group Insurance – Contracted Provider	695.60	397.71		1,093.31
220 Social Security Contributions	26,508.27	15,034.07	3,801.87	45,344.21
230 PSERS Retirement Contributions	117,028.60	75,511.63	8,697.33	201,237.56
250 Unemployment Compensation	28.48	22.78		51.26
260 Workers' Compensation	1,144.46	827.38		1,971.84
270 Group Insurance – Self-Insurance	51,781.00	26,144.00		77,925.00
Total Personnel Services – Employee Benefits	\$197,186.41	\$117,937.57	\$12,499.20	\$327,623.18
300 <u>Purchased Professional and Technical Services</u>				
330 Other Professional Services	13,797.00	15,912.78		29,709.78
Total Purchased Professional and Technical Services	\$13,797.00	\$15,912.78		\$29,709.78
500 <u>Other Purchased Services</u>				
580 Travel	306.95			306.95
Total Other Purchased Services	\$306.95			\$306.95
600 <u>Supplies</u>				
610 General Supplies	18,981.95			18,981.95
Total Supplies	\$18,981.95			\$18,981.95
Total 2140 Psychological Services	\$589,586.44	\$338,791.31	\$65,906.20	\$994,283.95

LEA : 123467103 Souderton Area SD

Printed 10/29/2018 10:25:21 AM

General Fund (10)				
2160 Social Work Services	<u>Elementary</u>	<u>Secondary</u>	<u>Federal</u>	<u>Total</u>
300 <u>Purchased Professional and Technical Services</u>				
330 Other Professional Services				473,440.36
Total Purchased Professional and Technical Services				\$473,440.36
600 <u>Supplies</u>				
610 General Supplies			100.00	100.00
Total Supplies			\$100.00	\$100.00
800 <u>Other Objects</u>				
890 Miscellaneous Expenditures			280.00	280.00
Total Other Objects			\$280.00	\$280.00
Total 2160 Social Work Services			\$380.00	\$473,820.36

LEA : 123467103 Souderton Area SD

Printed 10/29/2018 10:25:21 AM

General Fund (10)

2170 Student Accounting Services	<u>Elementary</u>	<u>Secondary</u>	<u>Federal</u>	<u>Total</u>
300 <u>Purchased Professional and Technical Services</u>				
330 Other Professional Services				275.00
Total Purchased Professional and Technical Services				\$275.00
Total 2170 Student Accounting Services				\$275.00

LEA : 123467103 Souderton Area SD

Printed 10/29/2018 10:25:21 AM

General Fund (10)

2200 Support Services – Instructional Staff

	Elementary	Secondary	Federal	Total
100 Personnel Services – Salaries				
100 Personnel Services – Salaries	1,020,610.79	1,190,249.75	81,707.72	2,292,568.26
Total Personnel Services – Salaries	\$1,020,610.79	\$1,190,249.75	\$81,707.72	\$2,292,568.26
200 Personnel Services – Employee Benefits				
210 Group Insurance – Contracted Provider	3,317.57	4,126.77		7,444.34
220 Social Security Contributions	74,773.94	86,749.01	6,040.95	167,563.90
230 PSERS Retirement Contributions	329,573.22	385,923.48	25,953.26	741,449.96
240 Tuition Reimbursement	62,423.00	94,157.93		156,580.93
250 Unemployment Compensation	35.33	57.59		92.92
260 Workers' Compensation	3,830.96	4,371.99		8,202.95
270 Group Insurance – Self-Insurance	200,347.50	196,942.50		397,290.00
291 Other Retirement Plans	17,390.19	18,340.18		35,730.37
Total Personnel Services – Employee Benefits	\$691,691.71	\$790,669.45	\$31,994.21	\$1,514,355.37
300 Purchased Professional and Technical Services				
322 Professional Educational Services – Ius			6,340.00	6,340.00
324 Professional Educational Services – Employee Training and Development Services	2,608.98	3,313.99	4,156.00	10,078.97
329 Professional Educational Services – Other	2,949.98	600.00	1,500.00	5,049.98
330 Other Professional Services		10,000.00		10,000.00
Total Purchased Professional and Technical Services	\$5,558.96	\$13,913.99	\$11,996.00	\$31,468.95
400 Purchased Property Services				
430 Repairs and Maintenance Services	4,996.08	9,353.97		14,350.05
440 Rentals	30,031.64	29,580.05		59,611.69
Total Purchased Property Services	\$35,027.72	\$38,934.02		\$73,961.74
500 Other Purchased Services				
530 Communications	500.00			500.00
550 Printing and Binding	650.90	388.19		1,039.09
580 Travel	3,995.41	4,346.11	4,676.12	13,017.64
Total Other Purchased Services	\$5,146.31	\$4,734.30	\$4,676.12	\$14,556.73
600 Supplies				
610 General Supplies	5,325.55	15,659.19		20,984.74
630 Food	147.18	33.85		181.03
640 Books and Periodicals	21,062.10	17,892.01		38,954.11
650 Supplies & Fees – Technology Related	84,308.73	86,062.26	1,195.00	171,565.99
Total Supplies	\$110,843.56	\$119,647.31	\$1,195.00	\$231,685.87
700 Property				
752 Capital Equipment – Original and Additional		5,527.64		5,527.64
758 Capitalized Technology Software - Original	132,316.32	269,573.69		401,890.01
Total Property	\$132,316.32	\$275,101.33		\$407,417.65
800 Other Objects				
810 Dues and Fees	350.00	124.00		474.00
890 Miscellaneous Expenditures	65.00			65.00

LEA : 123467103 Souderton Area SD

Printed 10/29/2018 10:25:21 AM

General Fund (10)

2200 Support Services – Instructional Staff

	<u>Elementary</u>	<u>Secondary</u>	<u>Federal</u>	<u>Total</u>
Total Other Objects	\$415.00	\$124.00		\$539.00
Total 2200 Support Services – Instructional Staff	\$2,001,610.37	\$2,433,374.15	\$131,569.05	\$4,566,553.57

LEA : 123467103 Souderton Area SD

Printed 10/29/2018 10:25:21 AM

General Fund (10)

2210 Supervision of Educational Media Services	Elementary	Secondary	Federal	Total
100 <u>Personnel Services – Salaries</u>				
100 Personnel Services – Salaries	39,684.41	39,684.40		79,368.81
Total Personnel Services – Salaries	\$39,684.41	\$39,684.40		\$79,368.81
200 <u>Personnel Services – Employee Benefits</u>				
210 Group Insurance – Contracted Provider	268.58	268.58		537.16
220 Social Security Contributions	2,889.80	2,889.79		5,779.59
230 PSERS Retirement Contributions	12,603.35	12,603.35		25,206.70
260 Workers' Compensation	127.04	127.04		254.08
270 Group Insurance – Self-Insurance	10,829.50	10,829.50		21,659.00
291 Other Retirement Plans	1,850.00	1,850.00		3,700.00
Total Personnel Services – Employee Benefits	\$28,568.27	\$28,568.26		\$57,136.53
300 <u>Purchased Professional and Technical Services</u>				
330 Other Professional Services		2,200.00		2,200.00
Total Purchased Professional and Technical Services		\$2,200.00		\$2,200.00
500 <u>Other Purchased Services</u>				
580 Travel	126.09	126.08		252.17
Total Other Purchased Services	\$126.09	\$126.08		\$252.17
600 <u>Supplies</u>				
610 General Supplies		1,788.62		1,788.62
630 Food	33.85	33.85		67.70
650 Supplies & Fees – Technology Related		116.99		116.99
Total Supplies	\$33.85	\$1,939.46		\$1,973.31
Total 2210 Supervision of Educational Media Services	\$68,412.62	\$72,518.20		\$140,930.82

LEA : 123467103 Souderton Area SD

Printed 10/29/2018 10:25:21 AM

General Fund (10)				
2211 Supervision of Educational Media Services – Head of Component	<u>Elementary</u>	<u>Secondary</u>	<u>Federal</u>	<u>Total</u>
100 <u>Personnel Services – Salaries</u>				
100 Personnel Services – Salaries	39,684.41	39,684.40		79,368.81
Total Personnel Services – Salaries	\$39,684.41	\$39,684.40		\$79,368.81
200 <u>Personnel Services – Employee Benefits</u>				
210 Group Insurance – Contracted Provider	268.58	268.58		537.16
220 Social Security Contributions	2,889.80	2,889.79		5,779.59
230 PSERS Retirement Contributions	12,603.35	12,603.35		25,206.70
260 Workers' Compensation	127.04	127.04		254.08
270 Group Insurance – Self-Insurance	10,829.50	10,829.50		21,659.00
291 Other Retirement Plans	1,850.00	1,850.00		3,700.00
Total Personnel Services – Employee Benefits	\$28,568.27	\$28,568.26		\$57,136.53
300 <u>Purchased Professional and Technical Services</u>				
330 Other Professional Services		2,200.00		2,200.00
Total Purchased Professional and Technical Services		\$2,200.00		\$2,200.00
500 <u>Other Purchased Services</u>				
580 Travel	126.09	126.08		252.17
Total Other Purchased Services	\$126.09	\$126.08		\$252.17
600 <u>Supplies</u>				
610 General Supplies		1,788.62		1,788.62
630 Food	33.85	33.85		67.70
650 Supplies & Fees – Technology Related		116.99		116.99
Total Supplies	\$33.85	\$1,939.46		\$1,973.31
Total 2211 Supervision of Educational Media Services – Head of Component	\$68,412.62	\$72,518.20		\$140,930.82

LEA : 123467103 Souderton Area SD

Printed 10/29/2018 10:25:21 AM

General Fund (10)

2220 Technology Support Services	Elementary	Secondary	Federal	Total
100 <u>Personnel Services – Salaries</u>				
100 Personnel Services – Salaries	69,868.00	303,294.55		373,162.55
Total Personnel Services – Salaries	\$69,868.00	\$303,294.55		\$373,162.55
200 <u>Personnel Services – Employee Benefits</u>				
210 Group Insurance – Contracted Provider	480.74	1,672.92		2,153.66
220 Social Security Contributions	5,183.52	22,026.37		27,209.89
230 PSERS Retirement Contributions	22,755.99	98,221.31		120,977.30
250 Unemployment Compensation	1.20	10.80		12.00
260 Workers' Compensation	224.64	963.27		1,187.91
270 Group Insurance – Self-Insurance	15,501.00	65,179.00		80,680.00
291 Other Retirement Plans	3,800.00	4,000.00		7,800.00
Total Personnel Services – Employee Benefits	\$47,947.09	\$192,073.67		\$240,020.76
500 <u>Other Purchased Services</u>				
580 Travel	384.70	2,390.55		2,775.25
Total Other Purchased Services	\$384.70	\$2,390.55		\$2,775.25
Total 2220 Technology Support Services	\$118,199.79	\$497,758.77		\$615,958.56

LEA : 123467103 Souderton Area SD

Printed 10/29/2018 10:25:21 AM

General Fund (10)

2240 Computer-Assisted Instruction Support Services	<u>Elementary</u>	<u>Secondary</u>	<u>Federal</u>	<u>Total</u>
400 <u>Purchased Property Services</u>				
440 Rentals	30,031.64	29,580.05		59,611.69
Total Purchased Property Services	\$30,031.64	\$29,580.05		\$59,611.69
600 <u>Supplies</u>				
610 General Supplies	2,324.95	1,975.34		4,300.29
Total Supplies	\$2,324.95	\$1,975.34		\$4,300.29
700 <u>Property</u>				
758 Capitalized Technology Software - Original	128,234.32	269,573.69		397,808.01
Total Property	\$128,234.32	\$269,573.69		\$397,808.01
Total 2240 Computer-Assisted Instruction Support Services	\$160,590.91	\$301,129.08		\$461,719.99

LEA : 123467103 Souderton Area SD

Printed 10/29/2018 10:25:21 AM

General Fund (10)				
2250 School Library Services	<u>Elementary</u>	<u>Secondary</u>	<u>Federal</u>	<u>Total</u>
100 <u>Personnel Services – Salaries</u>				
100 Personnel Services – Salaries	446,755.85	227,642.40		674,398.25
Total Personnel Services – Salaries	\$446,755.85	\$227,642.40		\$674,398.25
200 <u>Personnel Services – Employee Benefits</u>				
210 Group Insurance – Contracted Provider	875.09	450.20		1,325.29
220 Social Security Contributions	32,388.20	16,376.53		48,764.73
230 PSERS Retirement Contributions	145,507.98	74,143.18		219,651.16
250 Unemployment Compensation	2.99	19.61		22.60
260 Workers' Compensation	1,420.26	716.82		2,137.08
270 Group Insurance – Self-Insurance	112,169.00	55,376.00		167,545.00
Total Personnel Services – Employee Benefits	\$292,363.52	\$147,082.34		\$439,445.86
600 <u>Supplies</u>				
610 General Supplies	1,429.57	11,837.40		13,266.97
640 Books and Periodicals	19,620.10	15,271.40		34,891.50
650 Supplies & Fees – Technology Related	36,159.71	37,196.51		73,356.22
Total Supplies	\$57,209.38	\$64,305.31		\$121,514.69
700 <u>Property</u>				
752 Capital Equipment – Original and Additional		5,527.64		5,527.64
Total Property		\$5,527.64		\$5,527.64
Total 2250 School Library Services	\$796,328.75	\$444,557.69		\$1,240,886.44

LEA : 123467103 Souderton Area SD

Printed 10/29/2018 10:25:21 AM

General Fund (10)

2260 Instruction and Curriculum Development Services	Elementary	Secondary	Federal	Total
100 Personnel Services – Salaries				
100 Personnel Services – Salaries	280,170.03	311,054.12		591,224.15
Total Personnel Services – Salaries	\$280,170.03	\$311,054.12		\$591,224.15
200 Personnel Services – Employee Benefits				
210 Group Insurance – Contracted Provider	1,497.61	1,535.08		3,032.69
220 Social Security Contributions	20,784.89	23,095.72		43,880.61
230 PSERS Retirement Contributions	89,089.90	99,753.94		188,843.84
250 Unemployment Compensation	7.52	0.24		7.76
260 Workers' Compensation	905.99	1,043.46		1,949.45
270 Group Insurance – Self-Insurance	38,422.00	38,767.00		77,189.00
291 Other Retirement Plans	11,740.19	12,490.18		24,230.37
Total Personnel Services – Employee Benefits	\$162,448.10	\$176,685.62		\$339,133.72
300 Purchased Professional and Technical Services				
324 Professional Educational Services – Employee Training and Development Services	1,969.00	305.00		2,274.00
329 Professional Educational Services – Other		600.00		600.00
Total Purchased Professional and Technical Services	\$1,969.00	\$905.00		\$2,874.00
400 Purchased Property Services				
430 Repairs and Maintenance Services	4,996.08	9,353.97		14,350.05
Total Purchased Property Services	\$4,996.08	\$9,353.97		\$14,350.05
500 Other Purchased Services				
530 Communications	500.00			500.00
550 Printing and Binding	650.90	388.19		1,039.09
580 Travel	2,346.71	269.37		2,616.08
Total Other Purchased Services	\$3,497.61	\$657.56		\$4,155.17
600 Supplies				
610 General Supplies	1,571.03	57.83		1,628.86
630 Food	105.00			105.00
640 Books and Periodicals	1,332.32	1,850.61		3,182.93
650 Supplies & Fees – Technology Related	43,621.41	44,221.17		87,842.58
Total Supplies	\$46,629.76	\$46,129.61		\$92,759.37
700 Property				
758 Capitalized Technology Software - Original	4,082.00			4,082.00
Total Property	\$4,082.00			\$4,082.00
800 Other Objects				
810 Dues and Fees	350.00	124.00		474.00
890 Miscellaneous Expenditures	65.00			65.00
Total Other Objects	\$415.00	\$124.00		\$539.00
Total 2260 Instruction and Curriculum Development Services	\$504,207.58	\$544,909.88		\$1,049,117.46

LEA : 123467103 Souderton Area SD

Printed 10/29/2018 10:25:21 AM

General Fund (10)

2270 Instructional Staff Professional Development Services	Elementary	Secondary	Federal	Total
100 Personnel Services – Salaries				
100 Personnel Services – Salaries	184,132.50	308,574.28	81,707.72	574,414.50
Total Personnel Services – Salaries	\$184,132.50	\$308,574.28	\$81,707.72	\$574,414.50
200 Personnel Services – Employee Benefits				
210 Group Insurance – Contracted Provider	195.55	199.99		395.54
220 Social Security Contributions	13,527.53	22,360.60	6,040.95	41,929.08
230 PSERS Retirement Contributions	59,616.00	101,201.70	25,953.26	186,770.96
240 Tuition Reimbursement	62,423.00	94,157.93		156,580.93
250 Unemployment Compensation	23.62	26.94		50.56
260 Workers' Compensation	1,153.03	1,521.40		2,674.43
270 Group Insurance – Self-Insurance	23,426.00	26,791.00		50,217.00
Total Personnel Services – Employee Benefits	\$160,364.73	\$246,259.56	\$31,994.21	\$438,618.50
300 Purchased Professional and Technical Services				
322 Professional Educational Services – Ius			6,340.00	6,340.00
324 Professional Educational Services – Employee Training and Development Services	639.98	3,008.99	4,156.00	7,804.97
329 Professional Educational Services – Other	2,949.98		1,500.00	4,449.98
330 Other Professional Services		7,800.00		7,800.00
Total Purchased Professional and Technical Services	\$3,589.96	\$10,808.99	\$11,996.00	\$26,394.95
500 Other Purchased Services				
580 Travel	1,137.91	1,560.11	4,676.12	7,374.14
Total Other Purchased Services	\$1,137.91	\$1,560.11	\$4,676.12	\$7,374.14
600 Supplies				
630 Food	8.33			8.33
640 Books and Periodicals	109.68	770.00		879.68
650 Supplies & Fees – Technology Related	4,527.61	4,527.59	1,195.00	10,250.20
Total Supplies	\$4,645.62	\$5,297.59	\$1,195.00	\$11,138.21
Total 2270 Instructional Staff Professional Development Services	\$353,870.72	\$572,500.53	\$131,569.05	\$1,057,940.30

LEA : 123467103 Souderton Area SD

Printed 10/29/2018 10:25:21 AM

General Fund (10)				
2300 Support Services – Administration	<u>Elementary</u>	<u>Secondary</u>	<u>Federal</u>	<u>Total</u>
100 <u>Personnel Services – Salaries</u>				
100 Personnel Services – Salaries	997,734.12	1,333,182.90	112,483.66	2,781,132.92
Total Personnel Services – Salaries	\$997,734.12	\$1,333,182.90	\$112,483.66	\$2,781,132.92
200 <u>Personnel Services – Employee Benefits</u>				
210 Group Insurance – Contracted Provider	5,573.96	7,846.65		14,824.87
220 Social Security Contributions	73,535.24	99,511.86	8,342.80	203,625.97
230 PSERS Retirement Contributions	319,763.18	438,299.35	36,531.95	874,497.59
250 Unemployment Compensation	0.60	19.40		20.00
260 Workers' Compensation	3,228.69	5,011.98		9,057.06
270 Group Insurance – Self-Insurance	229,513.00	285,772.00		552,170.00
291 Other Retirement Plans				12,000.00
299 All Other Employee Benefits	19,382.05	24,821.16		44,203.21
Total Personnel Services – Employee Benefits	\$650,996.72	\$861,282.40	\$44,874.75	\$1,710,398.70
300 <u>Purchased Professional and Technical Services</u>				
324 Professional Educational Services – Employee Training and Development Services				4,478.00
329 Professional Educational Services – Other		1,595.00		7,495.00
330 Other Professional Services				319,817.76
340 Technical Services				4,900.00
Total Purchased Professional and Technical Services		\$1,595.00		\$336,690.76
400 <u>Purchased Property Services</u>				
430 Repairs and Maintenance Services	373.31	6,037.48		6,410.79
440 Rentals	25,909.59	31,756.32		57,665.91
Total Purchased Property Services	\$26,282.90	\$37,793.80		\$64,076.70
500 <u>Other Purchased Services</u>				
520 Insurance – General				66,170.00
530 Communications	4,262.65	12,461.18		65,307.08
549 Other Advertising/Public Relations				2,528.84
550 Printing and Binding	21,446.07	15,777.94		44,358.93
580 Travel	429.78	361.29		1,867.11
Total Other Purchased Services	\$26,138.50	\$28,600.41		\$180,231.96
600 <u>Supplies</u>				
610 General Supplies	9,107.96	27,399.89		43,043.42
630 Food		7,643.38		12,171.96
640 Books and Periodicals	1,007.46	1,393.93		4,139.31
650 Supplies & Fees – Technology Related	29.95	500.00		11,576.94
Total Supplies	\$10,145.37	\$36,937.20		\$70,931.63
800 <u>Other Objects</u>				
810 Dues and Fees	5,464.00	3,669.98		32,129.98
820 Claims and Judgments Against the LEA				120,000.00
Total Other Objects	\$5,464.00	\$3,669.98		\$152,129.98
Total 2300 Support Services – Administration	\$1,716,761.61	\$2,303,061.69	\$157,358.41	\$5,295,592.65

LEA : 123467103 Souderton Area SD

Printed 10/29/2018 10:25:21 AM

General Fund (10)				
2310 Board Services	<u>Elementary</u>	<u>Secondary</u>	<u>Federal</u>	<u>Total</u>
300 <u>Purchased Professional and Technical Services</u>				
324 Professional Educational Services – Employee Training and Development Services				25.00
330 Other Professional Services				17,148.00
340 Technical Services				4,900.00
Total Purchased Professional and Technical Services				\$22,073.00
500 <u>Other Purchased Services</u>				
520 Insurance – General				54,530.00
530 Communications				26.05
549 Other Advertising/Public Relations				1,678.84
Total Other Purchased Services				\$56,234.89
600 <u>Supplies</u>				
610 General Supplies				722.74
630 Food				53.55
640 Books and Periodicals				204.00
650 Supplies & Fees – Technology Related				10,961.55
Total Supplies				\$11,941.84
800 <u>Other Objects</u>				
810 Dues and Fees				13,795.00
820 Claims and Judgments Against the LEA				120,000.00
Total Other Objects				\$133,795.00
Total 2310 Board Services				\$224,044.73

LEA : 123467103 Souderton Area SD

Printed 10/29/2018 10:25:21 AM

General Fund (10)				
2330 Tax Assessment and Collection Services	<u>Elementary</u>	<u>Secondary</u>	<u>Federal</u>	<u>Total</u>
100 <u>Personnel Services – Salaries</u>				
100 Personnel Services – Salaries				81,267.00
Total Personnel Services – Salaries				\$81,267.00
200 <u>Personnel Services – Employee Benefits</u>				
220 Social Security Contributions				6,216.75
Total Personnel Services – Employee Benefits				\$6,216.75
300 <u>Purchased Professional and Technical Services</u>				
330 Other Professional Services				133,124.51
Total Purchased Professional and Technical Services				\$133,124.51
500 <u>Other Purchased Services</u>				
520 Insurance – General				11,640.00
530 Communications				28,082.20
550 Printing and Binding				7,114.32
Total Other Purchased Services				\$46,836.52
600 <u>Supplies</u>				
610 General Supplies				1,446.32
650 Supplies & Fees – Technology Related				85.44
Total Supplies				\$1,531.76
800 <u>Other Objects</u>				
810 Dues and Fees				720.00
Total Other Objects				\$720.00
Total 2330 Tax Assessment and Collection Services				\$269,696.54

LEA : 123467103 Souderton Area SD

Printed 10/29/2018 10:25:21 AM

General Fund (10)

2350 Legal and Accounting Services	<u>Elementary</u>	<u>Secondary</u>	<u>Federal</u>	<u>Total</u>
300 <u>Purchased Professional and Technical Services</u>				
330 Other Professional Services				137,385.25
Total Purchased Professional and Technical Services				\$137,385.25
Total 2350 Legal and Accounting Services				\$137,385.25

LEA : 123467103 Souderton Area SD

Printed 10/29/2018 10:25:21 AM

General Fund (10)				
2360 Office of the Superintendent / Executive Director Services	<u>Elementary</u>	<u>Secondary</u>	<u>Federal</u>	<u>Total</u>
100 <u>Personnel Services – Salaries</u>				
100 Personnel Services – Salaries				256,465.24
Total Personnel Services – Salaries				\$256,465.24
200 <u>Personnel Services – Employee Benefits</u>				
210 Group Insurance – Contracted Provider				1,404.26
220 Social Security Contributions				16,019.32
230 PSERS Retirement Contributions				79,903.11
260 Workers' Compensation				816.39
270 Group Insurance – Self-Insurance				36,885.00
291 Other Retirement Plans				12,000.00
Total Personnel Services – Employee Benefits				\$147,028.08
300 <u>Purchased Professional and Technical Services</u>				
324 Professional Educational Services – Employee Training and Development Services				4,453.00
329 Professional Educational Services – Other				5,900.00
Total Purchased Professional and Technical Services				\$10,353.00
500 <u>Other Purchased Services</u>				
530 Communications		183.12		183.12
549 Other Advertising/Public Relations				850.00
550 Printing and Binding				20.60
580 Travel				1,076.04
Total Other Purchased Services		\$183.12		\$2,129.76
600 <u>Supplies</u>				
610 General Supplies				4,366.51
630 Food				4,475.03
640 Books and Periodicals				1,533.92
Total Supplies				\$10,375.46
800 <u>Other Objects</u>				
810 Dues and Fees				8,481.00
Total Other Objects				\$8,481.00
Total 2360 Office of the Superintendent / Executive Director Services		\$183.12		\$434,832.54

LEA : 123467103 Souderton Area SD

Printed 10/29/2018 10:25:21 AM

General Fund (10)

2370 Community Relations Services

<u>Elementary</u>	<u>Secondary</u>	<u>Federal</u>	<u>Total</u>
-------------------	------------------	----------------	--------------

500 Other Purchased Services

530 Communications			20,475.00
--------------------	--	--	-----------

Total Other Purchased Services			\$20,475.00
---------------------------------------	--	--	--------------------

Total 2370 Community Relations Services			\$20,475.00
--	--	--	--------------------

LEA : 123467103 Souderton Area SD

Printed 10/29/2018 10:25:21 AM

General Fund (10)				
2380 Office of the Principal Services	<u>Elementary</u>	<u>Secondary</u>	<u>Federal</u>	<u>Total</u>
100 <u>Personnel Services – Salaries</u>				
100 Personnel Services – Salaries	997,734.12	1,333,182.90	112,483.66	2,443,400.68
Total Personnel Services – Salaries	\$997,734.12	\$1,333,182.90	\$112,483.66	\$2,443,400.68
200 <u>Personnel Services – Employee Benefits</u>				
210 Group Insurance – Contracted Provider	5,573.96	7,846.65		13,420.61
220 Social Security Contributions	73,535.24	99,511.86	8,342.80	181,389.90
230 PSERS Retirement Contributions	319,763.18	438,299.35	36,531.95	794,594.48
250 Unemployment Compensation	0.60	19.40		20.00
260 Workers' Compensation	3,228.69	5,011.98		8,240.67
270 Group Insurance – Self-Insurance	229,513.00	285,772.00		515,285.00
299 All Other Employee Benefits	19,382.05	24,821.16		44,203.21
Total Personnel Services – Employee Benefits	\$650,996.72	\$861,282.40	\$44,874.75	\$1,557,153.87
300 <u>Purchased Professional and Technical Services</u>				
329 Professional Educational Services – Other		1,595.00		1,595.00
Total Purchased Professional and Technical Services		\$1,595.00		\$1,595.00
400 <u>Purchased Property Services</u>				
430 Repairs and Maintenance Services	373.31	6,037.48		6,410.79
440 Rentals	25,909.59	31,756.32		57,665.91
Total Purchased Property Services	\$26,282.90	\$37,793.80		\$64,076.70
500 <u>Other Purchased Services</u>				
530 Communications	4,262.65	12,278.06		16,540.71
550 Printing and Binding	21,446.07	15,777.94		37,224.01
580 Travel	429.78	361.29		791.07
Total Other Purchased Services	\$26,138.50	\$28,417.29		\$54,555.79
600 <u>Supplies</u>				
610 General Supplies	9,107.96	27,399.89		36,507.85
630 Food		7,643.38		7,643.38
640 Books and Periodicals	1,007.46	1,393.93		2,401.39
650 Supplies & Fees – Technology Related	29.95	500.00		529.95
Total Supplies	\$10,145.37	\$36,937.20		\$47,082.57
800 <u>Other Objects</u>				
810 Dues and Fees	5,464.00	3,669.98		9,133.98
Total Other Objects	\$5,464.00	\$3,669.98		\$9,133.98
Total 2380 Office of the Principal Services	\$1,716,761.61	\$2,302,878.57	\$157,358.41	\$4,176,998.59

LEA : 123467103 Souderton Area SD

Printed 10/29/2018 10:25:21 AM

General Fund (10)

2390 Other Administration Services	<u>Elementary</u>	<u>Secondary</u>	<u>Federal</u>	<u>Total</u>
300 <u>Purchased Professional and Technical Services</u>				
330 Other Professional Services				32,160.00
Total Purchased Professional and Technical Services				\$32,160.00
Total 2390 Other Administration Services				\$32,160.00

LEA : 123467103 Souderton Area SD

Printed 10/29/2018 10:25:21 AM

General Fund (10)				
2400 Support Services – Pupil Health	<u>Elementary</u>	<u>Secondary</u>	<u>Federal</u>	<u>Total</u>
100 <u>Personnel Services – Salaries</u>				
100 Personnel Services – Salaries				796,756.15
Total Personnel Services – Salaries				\$796,756.15
200 <u>Personnel Services – Employee Benefits</u>				
210 Group Insurance – Contracted Provider				1,291.66
220 Social Security Contributions				58,604.74
230 PSERS Retirement Contributions				256,568.67
250 Unemployment Compensation				91.64
260 Workers' Compensation				2,831.37
270 Group Insurance – Self-Insurance				150,318.00
Total Personnel Services – Employee Benefits				\$469,706.08
300 <u>Purchased Professional and Technical Services</u>				
330 Other Professional Services				3,492.00
Total Purchased Professional and Technical Services				\$3,492.00
400 <u>Purchased Property Services</u>				
410 Cleaning Services				84.00
430 Repairs and Maintenance Services				615.00
Total Purchased Property Services				\$699.00
500 <u>Other Purchased Services</u>				
580 Travel				48.38
Total Other Purchased Services				\$48.38
600 <u>Supplies</u>				
610 General Supplies				21,805.80
640 Books and Periodicals				256.00
650 Supplies & Fees – Technology Related				3,600.00
Total Supplies				\$25,661.80
800 <u>Other Objects</u>				
810 Dues and Fees				30.00
Total Other Objects				\$30.00
Total 2400 Support Services – Pupil Health				\$1,296,393.41

LEA : 123467103 Souderton Area SD

Printed 10/29/2018 10:25:21 AM

General Fund (10)

2440 Nursing Services

	<u>Elementary</u>	<u>Secondary</u>	<u>Federal</u>	<u>Total</u>
100 <u>Personnel Services – Salaries</u>				
100 Personnel Services – Salaries				793,304.41
Total Personnel Services – Salaries				\$793,304.41
200 <u>Personnel Services – Employee Benefits</u>				
210 Group Insurance – Contracted Provider				1,282.15
220 Social Security Contributions				58,352.09
230 PSERS Retirement Contributions				255,462.19
250 Unemployment Compensation				91.64
260 Workers' Compensation				2,823.87
270 Group Insurance – Self-Insurance				148,072.56
Total Personnel Services – Employee Benefits				\$466,084.50
300 <u>Purchased Professional and Technical Services</u>				
330 Other Professional Services				3,492.00
Total Purchased Professional and Technical Services				\$3,492.00
400 <u>Purchased Property Services</u>				
410 Cleaning Services				84.00
430 Repairs and Maintenance Services				615.00
Total Purchased Property Services				\$699.00
500 <u>Other Purchased Services</u>				
580 Travel				48.38
Total Other Purchased Services				\$48.38
600 <u>Supplies</u>				
610 General Supplies				21,805.80
640 Books and Periodicals				256.00
650 Supplies & Fees – Technology Related				3,600.00
Total Supplies				\$25,661.80
800 <u>Other Objects</u>				
810 Dues and Fees				30.00
Total Other Objects				\$30.00
Total 2440 Nursing Services				\$1,289,320.09

LEA : 123467103 Souderton Area SD

Printed 10/29/2018 10:25:21 AM

General Fund (10)

2450 Nonpublic Health Services	<u>Elementary</u>	<u>Secondary</u>	<u>Federal</u>	<u>Total</u>
100 <u>Personnel Services – Salaries</u>				
100 Personnel Services – Salaries				3,451.74
Total Personnel Services – Salaries				\$3,451.74
200 <u>Personnel Services – Employee Benefits</u>				
210 Group Insurance – Contracted Provider				9.51
220 Social Security Contributions				252.65
230 PSERS Retirement Contributions				1,106.48
260 Workers' Compensation				7.50
270 Group Insurance – Self-Insurance				2,245.44
Total Personnel Services – Employee Benefits				\$3,621.58
Total 2450 Nonpublic Health Services				\$7,073.32

LEA : 123467103 Souderton Area SD

Printed 10/29/2018 10:25:21 AM

General Fund (10)				
2500 Support Services – Business	<u>Elementary</u>	<u>Secondary</u>	<u>Federal</u>	<u>Total</u>
100 <u>Personnel Services – Salaries</u>				
100 Personnel Services – Salaries				479,540.85
Total Personnel Services – Salaries				\$479,540.85
200 <u>Personnel Services – Employee Benefits</u>				
210 Group Insurance – Contracted Provider				2,307.80
220 Social Security Contributions				34,259.53
230 PSERS Retirement Contributions				152,894.02
250 Unemployment Compensation				14.50
260 Workers' Compensation				1,525.82
270 Group Insurance – Self-Insurance				122,045.00
291 Other Retirement Plans				11,800.00
Total Personnel Services – Employee Benefits				\$324,846.67
300 <u>Purchased Professional and Technical Services</u>				
324 Professional Educational Services – Employee Training and Development Services				1,614.14
330 Other Professional Services				23,850.00
Total Purchased Professional and Technical Services				\$25,464.14
400 <u>Purchased Property Services</u>				
430 Repairs and Maintenance Services				874.50
440 Rentals				143,864.60
Total Purchased Property Services				\$144,739.10
500 <u>Other Purchased Services</u>				
530 Communications				18,689.91
549 Other Advertising/Public Relations				610.52
580 Travel				559.90
Total Other Purchased Services				\$19,860.33
600 <u>Supplies</u>				
610 General Supplies				25,103.29
630 Food				1,809.20
640 Books and Periodicals				287.32
650 Supplies & Fees – Technology Related				11,613.00
Total Supplies				\$38,812.81
800 <u>Other Objects</u>				
810 Dues and Fees				15,296.14
Total Other Objects				\$15,296.14
Total 2500 Support Services – Business				\$1,048,560.04

LEA : 123467103 Souderton Area SD

Printed 10/29/2018 10:25:21 AM

General Fund (10)				
2510 Fiscal Services				
	<u>Elementary</u>	<u>Secondary</u>	<u>Federal</u>	<u>Total</u>
100 <u>Personnel Services – Salaries</u>				
100 Personnel Services – Salaries				388,342.05
Total Personnel Services – Salaries				\$388,342.05
200 <u>Personnel Services – Employee Benefits</u>				
210 Group Insurance – Contracted Provider				2,127.32
220 Social Security Contributions				27,640.51
230 PSERS Retirement Contributions				123,190.59
250 Unemployment Compensation				5.40
260 Workers' Compensation				1,235.94
270 Group Insurance – Self-Insurance				86,038.00
291 Other Retirement Plans				11,800.00
Total Personnel Services – Employee Benefits				\$252,037.76
300 <u>Purchased Professional and Technical Services</u>				
324 Professional Educational Services – Employee Training and Development Services				1,614.14
330 Other Professional Services				23,850.00
Total Purchased Professional and Technical Services				\$25,464.14
400 <u>Purchased Property Services</u>				
440 Rentals				117,248.60
Total Purchased Property Services				\$117,248.60
500 <u>Other Purchased Services</u>				
530 Communications				18,689.91
549 Other Advertising/Public Relations				610.52
580 Travel				559.90
Total Other Purchased Services				\$19,860.33
600 <u>Supplies</u>				
610 General Supplies				21,465.02
630 Food				1,809.20
640 Books and Periodicals				287.32
650 Supplies & Fees – Technology Related				11,613.00
Total Supplies				\$35,174.54
800 <u>Other Objects</u>				
810 Dues and Fees				15,296.14
Total Other Objects				\$15,296.14
Total 2510 Fiscal Services				\$853,423.56

LEA : 123467103 Souderton Area SD

Printed 10/29/2018 10:25:21 AM

General Fund (10)				
2511 Supervision of Fiscal Services - Head of Component	<u>Elementary</u>	<u>Secondary</u>	<u>Federal</u>	<u>Total</u>
100 <u>Personnel Services – Salaries</u>				
100 Personnel Services – Salaries				215,166.55
Total Personnel Services – Salaries				\$215,166.55
200 <u>Personnel Services – Employee Benefits</u>				
210 Group Insurance – Contracted Provider				1,312.64
220 Social Security Contributions				14,639.23
230 PSERS Retirement Contributions				67,596.02
260 Workers' Compensation				682.30
270 Group Insurance – Self-Insurance				34,392.00
291 Other Retirement Plans				7,350.20
Total Personnel Services – Employee Benefits				\$125,972.39
300 <u>Purchased Professional and Technical Services</u>				
324 Professional Educational Services – Employee Training and Development Services				1,614.14
330 Other Professional Services				23,850.00
Total Purchased Professional and Technical Services				\$25,464.14
400 <u>Purchased Property Services</u>				
440 Rentals				117,248.60
Total Purchased Property Services				\$117,248.60
500 <u>Other Purchased Services</u>				
530 Communications				18,689.91
549 Other Advertising/Public Relations				610.52
580 Travel				559.90
Total Other Purchased Services				\$19,860.33
600 <u>Supplies</u>				
610 General Supplies				21,465.02
630 Food				1,809.20
640 Books and Periodicals				287.32
650 Supplies & Fees – Technology Related				5,740.00
Total Supplies				\$29,301.54
800 <u>Other Objects</u>				
810 Dues and Fees				15,296.14
Total Other Objects				\$15,296.14
Total 2511 Supervision of Fiscal Services - Head of Component				\$548,309.69

LEA : 123467103 Souderton Area SD

Printed 10/29/2018 10:25:21 AM

General Fund (10)				
2513 Receiving and Disbursing Funds Services	<u>Elementary</u>	<u>Secondary</u>	<u>Federal</u>	<u>Total</u>
100 <u>Personnel Services – Salaries</u>				
100 Personnel Services – Salaries				20,656.14
Total Personnel Services – Salaries				\$20,656.14
200 <u>Personnel Services – Employee Benefits</u>				
210 Group Insurance – Contracted Provider				37.55
220 Social Security Contributions				1,447.09
230 PSERS Retirement Contributions				6,727.78
250 Unemployment Compensation				2.40
260 Workers' Compensation				68.00
270 Group Insurance – Self-Insurance				7,537.00
Total Personnel Services – Employee Benefits				\$15,819.82
600 <u>Supplies</u>				
650 Supplies & Fees – Technology Related				5,873.00
Total Supplies				\$5,873.00
Total 2513 Receiving and Disbursing Funds Services				\$42,348.96

LEA : 123467103 Souderton Area SD

Printed 10/29/2018 10:25:21 AM

General Fund (10)					
2514 Payroll Services		<u>Elementary</u>	<u>Secondary</u>	<u>Federal</u>	<u>Total</u>
100 <u>Personnel Services – Salaries</u>					
100 Personnel Services – Salaries					52,812.00
Total Personnel Services – Salaries					\$52,812.00
200 <u>Personnel Services – Employee Benefits</u>					
210 Group Insurance – Contracted Provider					103.26
220 Social Security Contributions					4,041.49
230 PSERS Retirement Contributions					17,200.83
250 Unemployment Compensation					3.00
260 Workers' Compensation					165.31
270 Group Insurance – Self-Insurance					22,562.00
291 Other Retirement Plans					1,400.00
Total Personnel Services – Employee Benefits					\$45,475.89
Total 2514 Payroll Services					\$98,287.89

LEA : 123467103 Souderton Area SD

Printed 10/29/2018 10:25:21 AM

General Fund (10)

2515 Financial Accounting Services	<u>Elementary</u>	<u>Secondary</u>	<u>Federal</u>	<u>Total</u>
100 <u>Personnel Services – Salaries</u>				
100 Personnel Services – Salaries				99,707.36
Total Personnel Services – Salaries				\$99,707.36
200 <u>Personnel Services – Employee Benefits</u>				
210 Group Insurance – Contracted Provider				673.87
220 Social Security Contributions				7,512.70
230 PSERS Retirement Contributions				31,665.96
260 Workers' Compensation				320.33
270 Group Insurance – Self-Insurance				21,547.00
291 Other Retirement Plans				3,049.80
Total Personnel Services – Employee Benefits				\$64,769.66
Total 2515 Financial Accounting Services				\$164,477.02

LEA : 123467103 Souderton Area SD

Printed 10/29/2018 10:25:21 AM

General Fund (10)

2520 Purchasing Services

Elementary Secondary Federal Total

100 <u>Personnel Services – Salaries</u>				
100 Personnel Services – Salaries				41,842.95
Total Personnel Services – Salaries				\$41,842.95
200 <u>Personnel Services – Employee Benefits</u>				
210 Group Insurance – Contracted Provider				86.61
220 Social Security Contributions				2,949.91
230 PSERS Retirement Contributions				13,628.20
250 Unemployment Compensation				4.20
260 Workers' Compensation				127.86
270 Group Insurance – Self-Insurance				17,625.00
Total Personnel Services – Employee Benefits				\$34,421.78
Total 2520 Purchasing Services				\$76,264.73

LEA : 123467103 Souderton Area SD

Printed 10/29/2018 10:25:21 AM

General Fund (10)				
2540 Printing, Publishing and Duplicating Services	<u>Elementary</u>	<u>Secondary</u>	<u>Federal</u>	<u>Total</u>
100 <u>Personnel Services – Salaries</u>				
100 Personnel Services – Salaries				49,355.85
Total Personnel Services – Salaries				\$49,355.85
200 <u>Personnel Services – Employee Benefits</u>				
210 Group Insurance – Contracted Provider				93.87
220 Social Security Contributions				3,669.11
230 PSERS Retirement Contributions				16,075.23
250 Unemployment Compensation				4.90
260 Workers' Compensation				162.02
270 Group Insurance – Self-Insurance				18,382.00
Total Personnel Services – Employee Benefits				\$38,387.13
400 <u>Purchased Property Services</u>				
430 Repairs and Maintenance Services				874.50
440 Rentals				26,616.00
Total Purchased Property Services				\$27,490.50
600 <u>Supplies</u>				
610 General Supplies				3,638.27
Total Supplies				\$3,638.27
Total 2540 Printing, Publishing and Duplicating Services				\$118,871.75

LEA : 123467103 Souderton Area SD

Printed 10/29/2018 10:25:21 AM

General Fund (10)				
2600 Operation and Maintenance of Plant Services	<u>Elementary</u>	<u>Secondary</u>	<u>Federal</u>	<u>Total</u>
100 <u>Personnel Services – Salaries</u>				
100 Personnel Services – Salaries				3,674,327.27
Total Personnel Services – Salaries				\$3,674,327.27
200 <u>Personnel Services – Employee Benefits</u>				
210 Group Insurance – Contracted Provider				6,409.38
220 Social Security Contributions				265,361.34
230 PSERS Retirement Contributions				1,163,403.30
250 Unemployment Compensation				570.98
260 Workers' Compensation				13,362.77
270 Group Insurance – Self-Insurance				972,261.00
291 Other Retirement Plans				3,936.05
Total Personnel Services – Employee Benefits				\$2,425,304.82
300 <u>Purchased Professional and Technical Services</u>				
330 Other Professional Services				3,990.00
350 Security / Safety Services				31,647.04
Total Purchased Professional and Technical Services				\$35,637.04
400 <u>Purchased Property Services</u>				
410 Cleaning Services				296,407.50
420 Utility Services				142,804.96
430 Repairs and Maintenance Services				438,620.06
440 Rentals				4,366.50
460 Extermination Services				5,232.60
Total Purchased Property Services				\$887,431.62
500 <u>Other Purchased Services</u>				
522 Automotive Liability Insurance				19,719.00
523 General Property and Liability Insurance				175,963.00
530 Communications				136,610.92
550 Printing and Binding				3.50
580 Travel				1,122.83
Total Other Purchased Services				\$333,419.25
600 <u>Supplies</u>				
610 General Supplies	104,088.95	107,147.97		211,236.92
620 Energy				1,275,914.78
650 Supplies & Fees – Technology Related				12,120.00
Total Supplies	\$104,088.95	\$107,147.97		\$1,499,271.70
800 <u>Other Objects</u>				
810 Dues and Fees				3,301.00
890 Miscellaneous Expenditures				22,925.67
Total Other Objects				\$26,226.67
Total 2600 Operation and Maintenance of Plant Services	\$104,088.95	\$107,147.97		\$8,881,618.37

LEA : 123467103 Souderton Area SD

Printed 10/29/2018 10:25:21 AM

General Fund (10)				
2610 Supervision of Operation and Maintenance of Plant Services	<u>Elementary</u>	<u>Secondary</u>	<u>Federal</u>	<u>Total</u>
100 <u>Personnel Services – Salaries</u>				
100 Personnel Services – Salaries				177,142.00
Total Personnel Services – Salaries				\$177,142.00
200 <u>Personnel Services – Employee Benefits</u>				
210 Group Insurance – Contracted Provider				870.83
220 Social Security Contributions				12,939.41
230 PSERS Retirement Contributions				56,808.48
250 Unemployment Compensation				2.40
260 Workers' Compensation				563.76
270 Group Insurance – Self-Insurance				60,703.00
291 Other Retirement Plans				2,736.00
Total Personnel Services – Employee Benefits				\$134,623.88
300 <u>Purchased Professional and Technical Services</u>				
330 Other Professional Services				3,990.00
Total Purchased Professional and Technical Services				\$3,990.00
400 <u>Purchased Property Services</u>				
440 Rentals				144.00
Total Purchased Property Services				\$144.00
500 <u>Other Purchased Services</u>				
580 Travel				527.83
Total Other Purchased Services				\$527.83
600 <u>Supplies</u>				
610 General Supplies	289.69	191.98		481.67
650 Supplies & Fees – Technology Related				7,665.00
Total Supplies	\$289.69	\$191.98		\$8,146.67
800 <u>Other Objects</u>				
810 Dues and Fees				575.00
Total Other Objects				\$575.00
Total 2610 Supervision of Operation and Maintenance of Plant Services	\$289.69	\$191.98		\$325,149.38

LEA : 123467103 Souderton Area SD

Printed 10/29/2018 10:25:21 AM

General Fund (10)				
2611 Supervision of Operation and Maintenance of Plant Services – Head of Component	<u>Elementary</u>	<u>Secondary</u>	<u>Federal</u>	<u>Total</u>
100 <u>Personnel Services – Salaries</u>				
100 Personnel Services – Salaries				177,142.00
Total Personnel Services – Salaries				\$177,142.00
200 <u>Personnel Services – Employee Benefits</u>				
210 Group Insurance – Contracted Provider				870.83
220 Social Security Contributions				12,939.41
230 PSERS Retirement Contributions				56,808.48
250 Unemployment Compensation				2.40
260 Workers' Compensation				563.76
270 Group Insurance – Self-Insurance				60,703.00
291 Other Retirement Plans				2,736.00
Total Personnel Services – Employee Benefits				\$134,623.88
300 <u>Purchased Professional and Technical Services</u>				
330 Other Professional Services				3,990.00
Total Purchased Professional and Technical Services				\$3,990.00
400 <u>Purchased Property Services</u>				
440 Rentals				144.00
Total Purchased Property Services				\$144.00
500 <u>Other Purchased Services</u>				
580 Travel				527.83
Total Other Purchased Services				\$527.83
600 <u>Supplies</u>				
610 General Supplies	289.69	191.98		481.67
650 Supplies & Fees – Technology Related				7,665.00
Total Supplies	\$289.69	\$191.98		\$8,146.67
800 <u>Other Objects</u>				
810 Dues and Fees				575.00
Total Other Objects				\$575.00
Total 2611 Supervision of Operation and Maintenance of Plant Services – Head of Component	\$289.69	\$191.98		\$325,149.38

LEA : 123467103 Souderton Area SD

Printed 10/29/2018 10:25:21 AM

General Fund (10)				
2620 Operation of Buildings Services	<u>Elementary</u>	<u>Secondary</u>	<u>Federal</u>	<u>Total</u>
100 <u>Personnel Services – Salaries</u>				
100 Personnel Services – Salaries				3,181,153.19
Total Personnel Services – Salaries				\$3,181,153.19
200 <u>Personnel Services – Employee Benefits</u>				
210 Group Insurance – Contracted Provider				5,350.80
220 Social Security Contributions				229,132.91
230 PSERS Retirement Contributions				1,009,715.15
250 Unemployment Compensation				482.00
260 Workers' Compensation				11,299.02
270 Group Insurance – Self-Insurance				854,699.00
Total Personnel Services – Employee Benefits				\$2,110,678.88
400 <u>Purchased Property Services</u>				
430 Repairs and Maintenance Services				394,269.80
440 Rentals				4,222.50
Total Purchased Property Services				\$398,492.30
600 <u>Supplies</u>				
610 General Supplies	91,427.79	88,619.94		180,047.73
Total Supplies	\$91,427.79	\$88,619.94		\$180,047.73
Total 2620 Operation of Buildings Services	\$91,427.79	\$88,619.94		\$5,870,372.10

LEA : 123467103 Souderton Area SD

Printed 10/29/2018 10:25:21 AM

General Fund (10)				
2630 Care and Upkeep of Grounds Services	<u>Elementary</u>	<u>Secondary</u>	<u>Federal</u>	<u>Total</u>
100 <u>Personnel Services – Salaries</u>				
100 Personnel Services – Salaries				106,585.64
Total Personnel Services – Salaries				\$106,585.64
200 <u>Personnel Services – Employee Benefits</u>				
210 Group Insurance – Contracted Provider				187.75
220 Social Security Contributions				7,578.98
230 PSERS Retirement Contributions				34,714.96
250 Unemployment Compensation				7.20
260 Workers' Compensation				366.60
270 Group Insurance – Self-Insurance				31,721.00
Total Personnel Services – Employee Benefits				\$74,576.49
400 <u>Purchased Property Services</u>				
410 Cleaning Services				225,577.50
430 Repairs and Maintenance Services				25,523.12
Total Purchased Property Services				\$251,100.62
600 <u>Supplies</u>				
610 General Supplies	9,027.03	12,905.29		21,932.32
Total Supplies	\$9,027.03	\$12,905.29		\$21,932.32
Total 2630 Care and Upkeep of Grounds Services	\$9,027.03	\$12,905.29		\$454,195.07

LEA : 123467103 Souderton Area SD

Printed 10/29/2018 10:25:21 AM

General Fund (10)				
2650 Vehicle Operation and Maintenance Services (Other Than Student Transportation Vehicles)	<u>Elementary</u>	<u>Secondary</u>	<u>Federal</u>	<u>Total</u>
400 <u>Purchased Property Services</u>				
430 Repairs and Maintenance Services				13,613.14
Total Purchased Property Services				\$13,613.14
500 <u>Other Purchased Services</u>				
522 Automotive Liability Insurance				19,719.00
580 Travel				595.00
Total Other Purchased Services				\$20,314.00
600 <u>Supplies</u>				
610 General Supplies	3,344.44	1,723.18		5,067.62
620 Energy				5,889.46
Total Supplies	\$3,344.44	\$1,723.18		\$10,957.08
800 <u>Other Objects</u>				
810 Dues and Fees				17.00
Total Other Objects				\$17.00
Total 2650 Vehicle Operation and Maintenance Services (Other Than Student Transportation Vehicles)	\$3,344.44	\$1,723.18		\$44,901.22

LEA : 123467103 Souderton Area SD

Printed 10/29/2018 10:25:21 AM

General Fund (10)				
2660 Safety and Security Services	<u>Elementary</u>	<u>Secondary</u>	<u>Federal</u>	<u>Total</u>
100 <u>Personnel Services – Salaries</u>				
100 Personnel Services – Salaries				209,446.44
Total Personnel Services – Salaries				\$209,446.44
200 <u>Personnel Services – Employee Benefits</u>				
220 Social Security Contributions				15,710.04
230 PSERS Retirement Contributions				62,164.71
250 Unemployment Compensation				79.38
260 Workers' Compensation				1,133.39
270 Group Insurance – Self-Insurance				25,138.00
291 Other Retirement Plans				1,200.05
Total Personnel Services – Employee Benefits				\$105,425.57
300 <u>Purchased Professional and Technical Services</u>				
350 Security / Safety Services				31,647.04
Total Purchased Professional and Technical Services				\$31,647.04
400 <u>Purchased Property Services</u>				
430 Repairs and Maintenance Services				5,214.00
Total Purchased Property Services				\$5,214.00
600 <u>Supplies</u>				
610 General Supplies		3,707.58		3,707.58
650 Supplies & Fees – Technology Related				4,455.00
Total Supplies		\$3,707.58		\$8,162.58
Total 2660 Safety and Security Services		\$3,707.58		\$359,895.63

LEA : 123467103 Souderton Area SD

Printed 10/29/2018 10:25:21 AM

General Fund (10)				
2690 Other Operation and Maintenance of Plant Services	<u>Elementary</u>	<u>Secondary</u>	<u>Federal</u>	<u>Total</u>
400 <u>Purchased Property Services</u>				
410 Cleaning Services				70,830.00
420 Utility Services				142,804.96
460 Extermination Services				5,232.60
Total Purchased Property Services				\$218,867.56
500 <u>Other Purchased Services</u>				
523 General Property and Liability Insurance				175,963.00
530 Communications				136,610.92
550 Printing and Binding				3.50
Total Other Purchased Services				\$312,577.42
600 <u>Supplies</u>				
620 Energy				1,270,025.32
Total Supplies				\$1,270,025.32
800 <u>Other Objects</u>				
810 Dues and Fees				2,709.00
890 Miscellaneous Expenditures				22,925.67
Total Other Objects				\$25,634.67
Total 2690 Other Operation and Maintenance of Plant Services				\$1,827,104.97

LEA : 123467103 Souderton Area SD

Printed 10/29/2018 10:25:21 AM

General Fund (10)				
2700 Student Transportation Services	<u>Elementary</u>	<u>Secondary</u>	<u>Federal</u>	<u>Total</u>
300 <u>Purchased Professional and Technical Services</u>				
324 Professional Educational Services – Employee Training and Development Services				75.00
Total Purchased Professional and Technical Services				\$75.00
500 <u>Other Purchased Services</u>				
511 Student Transportation Services from Another LEA Within the State				5,398.65
513 Contracted Carriers			110,280.99	7,074,060.61
516 Student Transportation Services From the IU				597,534.07
519 Student Transportation Services From Other Sources				35,884.26
530 Communications				2,267.80
Total Other Purchased Services			\$110,280.99	\$7,715,145.39
600 <u>Supplies</u>				
610 General Supplies				361.88
650 Supplies & Fees – Technology Related				5,358.00
Total Supplies				\$5,719.88
Total 2700 Student Transportation Services			\$110,280.99	\$7,720,940.27

LEA : 123467103 Souderton Area SD

Printed 10/29/2018 10:25:21 AM

General Fund (10)				
2720 Vehicle Operation Services				
	<u>Elementary</u>	<u>Secondary</u>	<u>Federal</u>	<u>Total</u>
300 <u>Purchased Professional and Technical Services</u>				
324 Professional Educational Services – Employee Training and Development Services				75.00
Total Purchased Professional and Technical Services				\$75.00
500 <u>Other Purchased Services</u>				
513 Contracted Carriers		110,280.99		6,098,451.85
516 Student Transportation Services From the IU				597,534.07
519 Student Transportation Services From Other Sources				35,884.26
530 Communications				2,267.80
Total Other Purchased Services			\$110,280.99	\$6,734,137.98
600 <u>Supplies</u>				
610 General Supplies				361.88
650 Supplies & Fees – Technology Related				5,358.00
Total Supplies				\$5,719.88
Total 2720 Vehicle Operation Services			\$110,280.99	\$6,739,932.86

LEA : 123467103 Souderton Area SD

Printed 10/29/2018 10:25:21 AM

General Fund (10)

2750 Nonpublic Transportation

Elementary Secondary Federal Total

500 Other Purchased Services

511 Student Transportation Services from Another LEA Within the State 5,398.65

513 Contracted Carriers 975,608.76

Total Other Purchased Services				\$981,007.41
Total 2750 Nonpublic Transportation				\$981,007.41

LEA : 123467103 Souderton Area SD

Printed 10/29/2018 10:25:21 AM

General Fund (10)					
2800 Support Services – Central		<u>Elementary</u>	<u>Secondary</u>	<u>Federal</u>	<u>Total</u>
100 <u>Personnel Services – Salaries</u>					
100 Personnel Services – Salaries					779,474.10
Total Personnel Services – Salaries					\$779,474.10
200 <u>Personnel Services – Employee Benefits</u>					
210 Group Insurance – Contracted Provider					4,416.98
220 Social Security Contributions					55,537.04
230 PSERS Retirement Contributions					247,861.64
240 Tuition Reimbursement					61,397.50
250 Unemployment Compensation					23.53
260 Workers' Compensation					2,672.65
270 Group Insurance – Self-Insurance					165,054.00
291 Other Retirement Plans					21,750.00
Total Personnel Services – Employee Benefits					\$558,713.34
300 <u>Purchased Professional and Technical Services</u>					
324 Professional Educational Services – Employee Training and Development Services					315.00
329 Professional Educational Services – Other					3,886.25
330 Other Professional Services					22,300.00
340 Technical Services					47,668.00
Total Purchased Professional and Technical Services					\$74,169.25
400 <u>Purchased Property Services</u>					
430 Repairs and Maintenance Services					63,957.45
440 Rentals					37,473.90
Total Purchased Property Services					\$101,431.35
500 <u>Other Purchased Services</u>					
530 Communications					346,909.67
549 Other Advertising/Public Relations					125.00
550 Printing and Binding					204.30
580 Travel					889.60
Total Other Purchased Services					\$348,128.57
600 <u>Supplies</u>					
610 General Supplies					34,472.03
630 Food					183.75
650 Supplies & Fees – Technology Related					298,831.81
Total Supplies					\$333,487.59
700 <u>Property</u>					
758 Capitalized Technology Software - Original					157,984.22
766 Capitalized Technology Hardware and Equipment– Replacement					91,732.01
Total Property					\$249,716.23
800 <u>Other Objects</u>					
810 Dues and Fees					575.00
Total Other Objects					\$575.00
Total 2800 Support Services – Central					\$2,445,695.43

LEA : 123467103 Souderton Area SD

Printed 10/29/2018 10:25:21 AM

General Fund (10)				
2810 Planning, Research, Development and Evaluation Services	<u>Elementary</u>	<u>Secondary</u>	<u>Federal</u>	<u>Total</u>
100 <u>Personnel Services – Salaries</u>				
100 Personnel Services – Salaries				135,958.35
Total Personnel Services – Salaries				\$135,958.35
200 <u>Personnel Services – Employee Benefits</u>				
210 Group Insurance – Contracted Provider				887.84
220 Social Security Contributions				10,188.49
230 PSERS Retirement Contributions				43,409.87
260 Workers' Compensation				428.89
270 Group Insurance – Self-Insurance				21,728.00
Total Personnel Services – Employee Benefits				\$76,643.09
600 <u>Supplies</u>				
610 General Supplies				1,146.53
Total Supplies				\$1,146.53
Total 2810 Planning, Research, Development and Evaluation Services				\$213,747.97

LEA : 123467103 Souderton Area SD

Printed 10/29/2018 10:25:21 AM

General Fund (10)

2820 Information Services	<u>Elementary</u>	<u>Secondary</u>	<u>Federal</u>	<u>Total</u>
100 <u>Personnel Services – Salaries</u>				
100 Personnel Services – Salaries				78,380.41
Total Personnel Services – Salaries				\$78,380.41
200 <u>Personnel Services – Employee Benefits</u>				
210 Group Insurance – Contracted Provider				762.06
220 Social Security Contributions				5,705.05
230 PSERS Retirement Contributions				25,206.69
260 Workers' Compensation				248.74
270 Group Insurance – Self-Insurance				17,692.00
291 Other Retirement Plans				3,700.00
Total Personnel Services – Employee Benefits				\$53,314.54
Total 2820 Information Services				\$131,694.95

LEA : 123467103 Souderton Area SD

Printed 10/29/2018 10:25:21 AM

General Fund (10)

2821 Supervision of Information Services	<u>Elementary</u>	<u>Secondary</u>	<u>Federal</u>	<u>Total</u>
100 <u>Personnel Services – Salaries</u>				
100 Personnel Services – Salaries				78,380.41
Total Personnel Services – Salaries				\$78,380.41
200 <u>Personnel Services – Employee Benefits</u>				
210 Group Insurance – Contracted Provider				762.06
220 Social Security Contributions				5,705.05
230 PSERS Retirement Contributions				25,206.69
260 Workers' Compensation				248.74
270 Group Insurance – Self-Insurance				17,692.00
291 Other Retirement Plans				3,700.00
Total Personnel Services – Employee Benefits				\$53,314.54
Total 2821 Supervision of Information Services				\$131,694.95

LEA : 123467103 Souderton Area SD

Printed 10/29/2018 10:25:21 AM

General Fund (10)				
2830 Staff Services	<u>Elementary</u>	<u>Secondary</u>	<u>Federal</u>	<u>Total</u>
100 <u>Personnel Services – Salaries</u>				
100 Personnel Services – Salaries				324,539.66
Total Personnel Services – Salaries				\$324,539.66
200 <u>Personnel Services – Employee Benefits</u>				
210 Group Insurance – Contracted Provider				1,125.30
220 Social Security Contributions				21,930.30
230 PSERS Retirement Contributions				102,268.24
240 Tuition Reimbursement				61,397.50
250 Unemployment Compensation				23.53
260 Workers' Compensation				1,229.97
270 Group Insurance – Self-Insurance				79,038.00
291 Other Retirement Plans				10,650.00
Total Personnel Services – Employee Benefits				\$277,662.84
300 <u>Purchased Professional and Technical Services</u>				
329 Professional Educational Services – Other				3,886.25
330 Other Professional Services				1,300.00
Total Purchased Professional and Technical Services				\$5,186.25
500 <u>Other Purchased Services</u>				
549 Other Advertising/Public Relations				125.00
550 Printing and Binding				198.55
580 Travel				440.34
Total Other Purchased Services				\$763.89
600 <u>Supplies</u>				
610 General Supplies				3,105.73
630 Food				183.75
650 Supplies & Fees – Technology Related				17,315.06
Total Supplies				\$20,604.54
800 <u>Other Objects</u>				
810 Dues and Fees				575.00
Total Other Objects				\$575.00
Total 2830 Staff Services				\$629,332.18

LEA : 123467103 Souderton Area SD

Printed 10/29/2018 10:25:21 AM

General Fund (10)				
2831 Supervision of Staff Services	<u>Elementary</u>	<u>Secondary</u>	<u>Federal</u>	<u>Total</u>
100 <u>Personnel Services – Salaries</u>				
100 Personnel Services – Salaries				232,571.41
Total Personnel Services – Salaries				\$232,571.41
200 <u>Personnel Services – Employee Benefits</u>				
210 Group Insurance – Contracted Provider				1,125.30
220 Social Security Contributions				15,579.44
230 PSERS Retirement Contributions				72,314.27
260 Workers' Compensation				733.19
270 Group Insurance – Self-Insurance				31,204.00
291 Other Retirement Plans				10,650.00
Total Personnel Services – Employee Benefits				\$131,606.20
300 <u>Purchased Professional and Technical Services</u>				
329 Professional Educational Services – Other				3,886.25
330 Other Professional Services				1,300.00
Total Purchased Professional and Technical Services				\$5,186.25
500 <u>Other Purchased Services</u>				
549 Other Advertising/Public Relations				125.00
550 Printing and Binding				198.55
580 Travel				440.34
Total Other Purchased Services				\$763.89
600 <u>Supplies</u>				
610 General Supplies				3,105.73
630 Food				183.75
650 Supplies & Fees – Technology Related				17,315.06
Total Supplies				\$20,604.54
800 <u>Other Objects</u>				
810 Dues and Fees				575.00
Total Other Objects				\$575.00
Total 2831 Supervision of Staff Services				\$391,307.29

LEA : 123467103 Souderton Area SD

Printed 10/29/2018 10:25:21 AM

General Fund (10)

2834 Staff Development Services – Non-Instructional, Certified Staff Only

Elementary

Secondary

Federal

Total

200 Personnel Services – Employee Benefits

240 Tuition Reimbursement

22,472.00

Total Personnel Services – Employee Benefits				\$22,472.00
Total 2834 Staff Development Services – Non-Instructional, Certified Staff Only				\$22,472.00

LEA : 123467103 Souderton Area SD

Printed 10/29/2018 10:25:21 AM

General Fund (10)

2835 Health Services

	<u>Elementary</u>	<u>Secondary</u>	<u>Federal</u>	<u>Total</u>
100 <u>Personnel Services – Salaries</u>				
100 Personnel Services – Salaries				35,397.43
Total Personnel Services – Salaries				\$35,397.43
200 <u>Personnel Services – Employee Benefits</u>				
220 Social Security Contributions				2,494.68
230 PSERS Retirement Contributions				11,528.93
250 Unemployment Compensation				9.60
260 Workers' Compensation				191.19
270 Group Insurance – Self-Insurance				18,089.00
Total Personnel Services – Employee Benefits				\$32,313.40
Total 2835 Health Services				\$67,710.83

LEA : 123467103 Souderton Area SD

Printed 10/29/2018 10:25:21 AM

General Fund (10)

2836 Staff Development Services – Non-Instructional, Non-Certified Staff Only	<u>Elementary</u>	<u>Secondary</u>	<u>Federal</u>	<u>Total</u>
200 <u>Personnel Services – Employee Benefits</u>				
240 Tuition Reimbursement				38,925.50
Total Personnel Services – Employee Benefits				\$38,925.50
Total 2836 Staff Development Services – Non-Instructional, Non-Certified Staff Only				\$38,925.50

LEA : 123467103 Souderton Area SD

Printed 10/29/2018 10:25:21 AM

General Fund (10)

2839 Other Staff Services

Elementary Secondary Federal Total

100 <u>Personnel Services – Salaries</u>				
100 Personnel Services – Salaries				56,570.82
Total Personnel Services – Salaries				\$56,570.82
200 <u>Personnel Services – Employee Benefits</u>				
220 Social Security Contributions				3,856.18
230 PSERS Retirement Contributions				18,425.04
250 Unemployment Compensation				13.93
260 Workers' Compensation				305.59
270 Group Insurance – Self-Insurance				29,745.00
Total Personnel Services – Employee Benefits				\$52,345.74
Total 2839 Other Staff Services				\$108,916.56

LEA : 123467103 Souderton Area SD

Printed 10/29/2018 10:25:21 AM

General Fund (10)				
2840 Data Processing Services				
	<u>Elementary</u>	<u>Secondary</u>	<u>Federal</u>	<u>Total</u>
100 <u>Personnel Services – Salaries</u>				
100 Personnel Services – Salaries				240,595.68
Total Personnel Services – Salaries				\$240,595.68
200 <u>Personnel Services – Employee Benefits</u>				
210 Group Insurance – Contracted Provider				1,641.78
220 Social Security Contributions				17,713.20
230 PSERS Retirement Contributions				76,976.84
260 Workers' Compensation				765.05
270 Group Insurance – Self-Insurance				46,596.00
291 Other Retirement Plans				7,400.00
Total Personnel Services – Employee Benefits				\$151,092.87
300 <u>Purchased Professional and Technical Services</u>				
324 Professional Educational Services – Employee Training and Development Services				315.00
330 Other Professional Services				21,000.00
340 Technical Services				47,668.00
Total Purchased Professional and Technical Services				\$68,983.00
400 <u>Purchased Property Services</u>				
430 Repairs and Maintenance Services				63,957.45
440 Rentals				37,473.90
Total Purchased Property Services				\$101,431.35
500 <u>Other Purchased Services</u>				
530 Communications				346,909.67
550 Printing and Binding				5.75
580 Travel				449.26
Total Other Purchased Services				\$347,364.68
600 <u>Supplies</u>				
610 General Supplies				30,219.77
650 Supplies & Fees – Technology Related				281,516.75
Total Supplies				\$311,736.52
700 <u>Property</u>				
758 Capitalized Technology Software - Original				157,984.22
766 Capitalized Technology Hardware and Equipment– Replacement				91,732.01
Total Property				\$249,716.23
Total 2840 Data Processing Services				\$1,470,920.33

LEA : 123467103 Souderton Area SD

Printed 10/29/2018 10:25:21 AM

General Fund (10)

2900 Other Support Services

Elementary Secondary Federal Total

500 Other Purchased Services

595 IU Payments By Withholding 82,599.22

Total Other Purchased Services \$82,599.22

Total 2900 Other Support Services \$82,599.22

LEA : 123467103 Souderton Area SD

Printed 10/29/2018 10:25:21 AM

General Fund (10)

2910 Support Services Not Listed Elsewhere In the 2000 Series

<u>Elementary</u>	<u>Secondary</u>	<u>Federal</u>	<u>Total</u>
-------------------	------------------	----------------	--------------

500 Other Purchased Services

595 IU Payments By Withholding			82,599.22
--------------------------------	--	--	-----------

Total Other Purchased Services			\$82,599.22
---------------------------------------	--	--	--------------------

Total 2910 Support Services Not Listed Elsewhere In the 2000 Series			\$82,599.22
--	--	--	--------------------

LEA : 123467103 Souderton Area SD

Printed 10/29/2018 10:25:26 AM

General Fund (10)

3000 Operation of Non-Instructional Services		<u>Total</u>
100 <u>Personnel Services – Salaries</u>		
100 Personnel Services – Salaries	644,229.92	
Total Personnel Services – Salaries		\$644,229.92
200 <u>Personnel Services – Employee Benefits</u>		
210 Group Insurance – Contracted Provider	206.53	
220 Social Security Contributions	48,967.36	
230 PSERS Retirement Contributions	168,543.36	
250 Unemployment Compensation	333.83	
260 Workers' Compensation	3,296.16	
270 Group Insurance – Self-Insurance	46,572.00	
291 Other Retirement Plans	1,400.00	
Total Personnel Services – Employee Benefits		\$269,319.24
300 <u>Purchased Professional and Technical Services</u>		
329 Professional Educational Services – Other	500.00	
330 Other Professional Services	43,853.75	
390 Other Purchased Professional and Technical Services	54,857.08	
Total Purchased Professional and Technical Services		\$99,210.83
400 <u>Purchased Property Services</u>		
430 Repairs and Maintenance Services	54.29	
440 Rentals	6,585.03	
Total Purchased Property Services		\$6,639.32
500 <u>Other Purchased Services</u>		
510 Student Transportation Services	154,883.90	
520 Insurance – General	6,457.00	
530 Communications	29.25	
550 Printing and Binding	2,123.93	
580 Travel	1,598.61	
599 Other Miscellaneous Purchased Services	60,025.48	
Total Other Purchased Services		\$225,118.17
600 <u>Supplies</u>		
610 General Supplies	104,285.92	
630 Food	13,194.84	
640 Books and Periodicals	43,419.61	
650 Supplies & Fees – Technology Related	875.00	
Total Supplies		\$161,775.37
800 <u>Other Objects</u>		
810 Dues and Fees	22,821.72	
860 Grants To Municipal and Community Service Organizations	5,073.99	
890 Miscellaneous Expenditures	38,774.63	
Total Other Objects		\$66,670.34
Total 3000 Operation of Non-Instructional Services		\$1,472,963.19

LEA : 123467103 Souderton Area SD

Printed 10/29/2018 10:25:26 AM

General Fund (10)				
3200 Student Activities	<u>Elementary</u>	<u>Secondary</u>	<u>Federal</u>	<u>Total</u>
100 <u>Personnel Services – Salaries</u>				
100 Personnel Services – Salaries				644,229.92
Total Personnel Services – Salaries				\$644,229.92
200 <u>Personnel Services – Employee Benefits</u>				
210 Group Insurance – Contracted Provider				206.53
220 Social Security Contributions				48,967.36
230 PSERS Retirement Contributions				168,543.36
250 Unemployment Compensation				333.83
260 Workers' Compensation				3,296.16
270 Group Insurance – Self-Insurance				46,572.00
291 Other Retirement Plans				1,400.00
Total Personnel Services – Employee Benefits				\$269,319.24
300 <u>Purchased Professional and Technical Services</u>				
329 Professional Educational Services – Other				500.00
330 Other Professional Services				43,853.75
390 Other Purchased Professional and Technical Services				54,857.08
Total Purchased Professional and Technical Services				\$99,210.83
400 <u>Purchased Property Services</u>				
430 Repairs and Maintenance Services				54.29
440 Rentals				6,585.03
Total Purchased Property Services				\$6,639.32
500 <u>Other Purchased Services</u>				
510 Student Transportation Services				154,883.90
520 Insurance – General				6,457.00
530 Communications				29.25
550 Printing and Binding				2,123.93
580 Travel				1,598.61
599 Other Miscellaneous Purchased Services				60,025.48
Total Other Purchased Services				\$225,118.17
600 <u>Supplies</u>				
610 General Supplies				98,749.73
630 Food				13,194.84
640 Books and Periodicals				42,759.61
650 Supplies & Fees – Technology Related				875.00
Total Supplies				\$155,579.18
800 <u>Other Objects</u>				
810 Dues and Fees				22,821.72
860 Grants To Municipal and Community Service Organizations				5,073.99
890 Miscellaneous Expenditures				38,774.63
Total Other Objects				\$66,670.34
Total 3200 Student Activities				\$1,466,767.00

LEA : 123467103 Souderton Area SD

Printed 10/29/2018 10:25:26 AM

General Fund (10)

3300 Community Services

	<u>Elementary</u>	<u>Secondary</u>	<u>Federal</u>	<u>Total</u>
600 <u>Supplies</u>				
610 General Supplies			5,536.19	5,536.19
640 Books and Periodicals			660.00	660.00
Total Supplies			\$6,196.19	\$6,196.19
Total 3300 Community Services			\$6,196.19	\$6,196.19

LEA : 123467103 Souderton Area SD

Printed 10/29/2018 10:25:28 AM

General Fund (10)

4000 Facilities Acquisition, Construction and Improvement Services	<u>Total</u>
400 <u>Purchased Property Services</u>	
430 Repairs and Maintenance Services	46,126.51
Total Purchased Property Services	\$46,126.51
Total 4000 Facilities Acquisition, Construction and Improvement Services	\$46,126.51

LEA : 123467103 Souderton Area SD

Printed 10/29/2018 10:25:28 AM

General Fund (10)

4200 Existing Site Improvement Services	<u>Elementary</u>	<u>Secondary</u>	<u>Federal</u>	<u>Total</u>
400 <u>Purchased Property Services</u>				
430 Repairs and Maintenance Services				6,440.00
Total Purchased Property Services				\$6,440.00
Total 4200 Existing Site Improvement Services				\$6,440.00

LEA : 123467103 Souderton Area SD

Printed 10/29/2018 10:25:28 AM

General Fund (10)

4600 Existing Building Improvement Services	<u>Elementary</u>	<u>Secondary</u>	<u>Federal</u>	<u>Total</u>
400 <u>Purchased Property Services</u>				
430 Repairs and Maintenance Services				39,686.51
Total Purchased Property Services				\$39,686.51
Total 4600 Existing Building Improvement Services				\$39,686.51

LEA : 123467103 Souderton Area SD

Printed 10/29/2018 10:25:31 AM

General Fund (10)	
5000 Other Expenditures and Financing Uses	<u>Total</u>
800 <u>Other Objects</u>	
830 Interest	2,134,558.78
Total Other Objects	\$2,134,558.78
900 <u>Other Uses of Funds</u>	
910 Redemption of Principal	7,360,000.00
Total Other Uses of Funds	\$7,360,000.00
Total 5000 Other Expenditures and Financing Uses	\$9,494,558.78

LEA : 123467103 Souderton Area SD

Printed 10/29/2018 10:25:31 AM

General Fund (10)

5100 Debt Service / Other Expenditures and Financing Uses	<u>Elementary</u>	<u>Secondary</u>	<u>Federal</u>	<u>Total</u>
800 <u>Other Objects</u>				
830 Interest				2,134,558.78
Total Other Objects				\$2,134,558.78
900 <u>Other Uses of Funds</u>				
910 Redemption of Principal				7,360,000.00
Total Other Uses of Funds				\$7,360,000.00
Total 5100 Debt Service / Other Expenditures and Financing Uses				\$9,494,558.78

LEA : 123467103 Souderton Area SD

Printed 10/29/2018 10:25:31 AM

General Fund (10)				
5110 Debt Service	<u>Elementary</u>	<u>Secondary</u>	<u>Federal</u>	<u>Total</u>
800 <u>Other Objects</u>				
830 Interest				2,134,558.78
Total Other Objects				\$2,134,558.78
900 <u>Other Uses of Funds</u>				
910 Redemption of Principal				7,360,000.00
Total Other Uses of Funds				\$7,360,000.00
Total 5110 Debt Service				\$9,494,558.78

LEA : 123467103 Souderton Area SD

Printed 10/29/2018 10:25:30 AM

Other Capital Projects Fund (39)

4000 Facilities Acquisition, Construction and Improvement Services

Total

300 Purchased Professional and Technical Services

330 Other Professional Services	408,924.05
---------------------------------	------------

Total Purchased Professional and Technical Services	\$408,924.05
--	---------------------

400 Purchased Property Services

440 Rentals	462.00
-------------	--------

450 Construction Services	6,577,685.74
---------------------------	--------------

Total Purchased Property Services	\$6,578,147.74
--	-----------------------

500 Other Purchased Services

520 Insurance – General	18,400.00
-------------------------	-----------

549 Other Advertising/Public Relations	2,649.64
--	----------

Total Other Purchased Services	\$21,049.64
---------------------------------------	--------------------

600 Supplies

610 General Supplies	6,561.32
----------------------	----------

Total Supplies	\$6,561.32
-----------------------	-------------------

Total 4000 Facilities Acquisition, Construction and Improvement Services	\$7,014,682.75
---	-----------------------

LEA : 123467103 Souderton Area SD

Printed 10/29/2018 10:25:30 AM

Other Capital Projects Fund (39)

4200 Existing Site Improvement Services

<u>Elementary</u>	<u>Secondary</u>	<u>Federal</u>	<u>Total</u>
-------------------	------------------	----------------	--------------

400 Purchased Property Services

450 Construction Services			716,814.41
---------------------------	--	--	------------

Total Purchased Property Services			\$716,814.41
--	--	--	---------------------

500 Other Purchased Services

549 Other Advertising/Public Relations			2,649.64
--	--	--	----------

Total Other Purchased Services			\$2,649.64
---------------------------------------	--	--	-------------------

Total 4200 Existing Site Improvement Services			\$719,464.05
--	--	--	---------------------

LEA : 123467103 Souderton Area SD

Printed 10/29/2018 10:25:30 AM

Other Capital Projects Fund (39)

4500 Building Acquisition and Construction Services – Original and Additional	<u>Elementary</u>	<u>Secondary</u>	<u>Federal</u>	<u>Total</u>
600 <u>Supplies</u>				
610 General Supplies				3,405.00
Total Supplies				\$3,405.00
Total 4500 Building Acquisition and Construction Services – Original and Additional				\$3,405.00

LEA : 123467103 Souderton Area SD

Printed 10/29/2018 10:25:30 AM

Other Capital Projects Fund (39)

4600 Existing Building Improvement Services	<u>Elementary</u>	<u>Secondary</u>	<u>Federal</u>	<u>Total</u>
300 <u>Purchased Professional and Technical Services</u>				
330 Other Professional Services				408,924.05
Total Purchased Professional and Technical Services				\$408,924.05
400 <u>Purchased Property Services</u>				
440 Rentals				462.00
450 Construction Services				5,860,871.33
Total Purchased Property Services				\$5,861,333.33
500 <u>Other Purchased Services</u>				
520 Insurance – General				18,400.00
Total Other Purchased Services				\$18,400.00
600 <u>Supplies</u>				
610 General Supplies				3,156.32
Total Supplies				\$3,156.32
Total 4600 Existing Building Improvement Services				\$6,291,813.70

LEA : 123467103 Souderton Area SD

Printed 10/29/2018 10:25:33 AM

Debt Service Fund (40)

5000 Other Expenditures and Financing Uses

Total

900 Other Uses of Funds

930 Fund Transfers

127.00

Total Other Uses of Funds

\$127.00

Total 5000 Other Expenditures and Financing Uses

\$127.00

LEA : 123467103 Souderton Area SD

Printed 10/29/2018 10:25:33 AM

Debt Service Fund (40)

5200 Interfund Transfers – Out	<u>Elementary</u>	<u>Secondary</u>	<u>Federal</u>	<u>Total</u>
900 <u>Other Uses of Funds</u>				
930 Fund Transfers				127.00
Total Other Uses of Funds				\$127.00
Total 5200 Interfund Transfers – Out				\$127.00

LEA : 123467103 Souderton Area SD

Printed 10/29/2018 10:25:33 AM

Debt Service Fund (40)				
5210 General Fund Transfers	<u>Elementary</u>	<u>Secondary</u>	<u>Federal</u>	<u>Total</u>
900 <u>Other Uses of Funds</u>				
930 Fund Transfers				127.00
Total Other Uses of Funds				\$127.00
Total 5210 General Fund Transfers				\$127.00

LEA : 123467103 Souderton Area SD

Printed 10/29/2018 10:25:40 AM

	<u>General Fund(10)</u>	<u>Public Purpose Trust(27)</u>	<u>Other Compt Approved (28)</u>	<u>Athletic / Activity(29)</u>	<u>Capital Reserve (690. 1850)(31)</u>
1000 <u>Instruction</u>					
1100 Regular Programs - Elementary / Secondary	52,461,581.15				
1200 Special Programs - Elementary / Secondary	21,604,416.34				
1300 Vocational Education	2,224,176.38				
1400 Other Instructional Programs - Elementary / Secondary	591,102.08				
1500 Nonpublic School Programs	6,010.72				
1600 Adult Education Programs	197,883.66				
Total Instruction	\$77,085,170.33				
2000 <u>Support Services</u>					
2100 Support Services - Students	4,625,187.43				
2200 Support Services - Instructional Staff	4,566,553.57				
2300 Support Services - Administration	5,295,592.65				
2400 Support Services - Pupil Health	1,296,393.41				
2500 Support Services - Business	1,048,560.04				
2600 Operation and Maintenance of Plant Services	8,881,618.37				
2700 Student Transportation Services	7,720,940.27				
2800 Support Services - Central	2,445,695.43				
2900 Other Support Services	82,599.22				
Total Support Services	\$35,963,140.39				
3000 <u>Operation of Non-Instructional Services</u>					
3200 Student Activities	1,466,767.00				
3300 Community Services	6,196.19				
Total Operation of Non-Instructional Services	\$1,472,963.19				
4000 <u>Facilities Acquisition, Construction and Improvement Services</u>					
4200 Existing Site Improvement Services	6,440.00				
4500 Building Acquisition and Construction Services - Original and Additional					
4600 Existing Building Improvement Services	39,686.51				
Total Facilities Acquisition, Construction and Improvement Services	\$46,126.51				
5000 <u>Other Expenditures and Financing Uses</u>					
5100 Debt Service / Other Expenditures and Financing Uses	9,494,558.78				
5200 Interfund Transfers - Out					
Total Other Expenditures and Financing Uses	\$9,494,558.78				
TOTAL ACTUAL EXPENDITURES & OTHER FINANCING USES	\$124,061,959.20				

LEA : 123467103 Souderton Area SD

Printed 10/29/2018 10:25:40 AM

	<u>Capital Reserve (1431)(32)</u>	<u>Other Capital Projects Fund(39)</u>	<u>Debt Service(40)</u>	<u>Permanent(90)</u>	<u>Total</u>
1000 Instruction					
1100 Regular Programs - Elementary / Secondary					52,461,581.15
1200 Special Programs - Elementary / Secondary					21,604,416.34
1300 Vocational Education					2,224,176.38
1400 Other Instructional Programs - Elementary / Secondary					591,102.08
1500 Nonpublic School Programs					6,010.72
1600 Adult Education Programs					197,883.66
Total Instruction					\$77,085,170.33
2000 Support Services					
2100 Support Services - Students					4,625,187.43
2200 Support Services - Instructional Staff					4,566,553.57
2300 Support Services - Administration					5,295,592.65
2400 Support Services - Pupil Health					1,296,393.41
2500 Support Services - Business					1,048,560.04
2600 Operation and Maintenance of Plant Services					8,881,618.37
2700 Student Transportation Services					7,720,940.27
2800 Support Services - Central					2,445,695.43
2900 Other Support Services					82,599.22
Total Support Services					\$35,963,140.39
3000 Operation of Non-Instructional Services					
3200 Student Activities					1,466,767.00
3300 Community Services					6,196.19
Total Operation of Non-Instructional Services					\$1,472,963.19
4000 Facilities Acquisition, Construction and Improvement Services					
4200 Existing Site Improvement Services		719,464.05			725,904.05
4500 Building Acquisition and Construction Services - Original and Additional		3,405.00			3,405.00
4600 Existing Building Improvement Services		6,291,813.70			6,331,500.21
Total Facilities Acquisition, Construction and Improvement Services		\$7,014,682.75			\$7,060,809.26
5000 Other Expenditures and Financing Uses					
5100 Debt Service / Other Expenditures and Financing Uses					9,494,558.78
5200 Interfund Transfers - Out			127.00		127.00
Total Other Expenditures and Financing Uses			\$127.00		\$9,494,685.78
TOTAL ACTUAL EXPENDITURES & OTHER FINANCING USES		\$7,014,682.75	\$127.00		\$131,076,768.95

LEA : 123467103 Souderton Area SD

Printed 10/29/2018 10:25:45 AM

PSERS Salary Data (Salary Data should relate to the General Fund only)

Amount	Description	Amount
	Total Salary Base for salaries subject to PSERS withholding	51,996,101.90
	Total Federally Funded salaries subject to PSERS withholding	1,038,517.93

Title I Expenditure Data

Amount	Description	Amount
	Expenditures Funded with Current Title I Funds	448,355.64
	Expenditures Funded with Carry over Title I Funds	24,270.02
Total Title I Expenditure Data		\$472,625.66

Benefits for Staff Relative to Collective Bargaining Agreements

	OBJECT	COVERED	NOT COVERED	TOTAL
10 General Fund				
	211 Medical Insurance			
	212 Dental Insurance			
	215 Eye Care Insurance			
	216 Prescription Insurance			
	271 Self-Insurance Medical Benefits	8,404,009.54	1,084,538.00	9,488,547.54
	272 Self-Insurance Dental Benefits	676,437.90	98,486.00	774,923.90
	275 Self-Insurance Eye Care Benefits	94,706.56	13,484.00	108,190.56
	276 Self-Insurance Prescription Benefits			
	FUND TOTAL	\$9,175,154.00	\$1,196,508.00	\$10,371,662.00
50 Enterprise Fund				
	211 Medical Insurance			
	212 Dental Insurance			
	215 Eye Care Insurance			
	216 Prescription Insurance			
	271 Self-Insurance Medical Benefits		120,142.28	120,142.28
	272 Self-Insurance Dental Benefits		9,809.96	9,809.96
	275 Self-Insurance Eye Care Benefits		1,177.90	1,177.90
	276 Self-Insurance Prescription Benefits			
	FUND TOTAL		\$131,130.14	\$131,130.14
60 Internal Service Fund	No Self Insurance data to report			
	211 Medical Insurance			
	212 Dental Insurance			
	215 Eye Care Insurance			
	216 Prescription Insurance			
	271 Self-Insurance Medical Benefits			
	272 Self-Insurance Dental Benefits			
	275 Self-Insurance Eye Care Benefits			
	276 Self-Insurance Prescription Benefits			
	FUND TOTAL			
Total of All Funds		\$9,175,154.00	\$1,327,638.14	\$10,502,792.14

LEA : 123467103 Souderton Area SD

Printed 10/29/2018 10:25:47 AM

Function	Special Education (Prior Year)	Nonspecial Education (Prior Year)	Total (Prior Year)	Special Education (Current Year)	Nonspecial Education (Current Year)	Total (Current Year)
2120 Guidance Services	461,822.39	1,500,168.16	1,961,990.55	469,471.32	1,679,138.86	2,148,610.18
2140 Psychological Services	221,630.76	719,937.81	941,568.57	217,251.04	777,032.91	994,283.95
2150 Speech Pathology and Audiology Services						
2160 Social Work Services	212,769.25	212,769.25	425,538.50	236,720.18	236,720.18	473,440.36
2260 Instruction and Curriculum Development Services	246,390.83	800,367.59	1,046,758.42	229,232.17	819,885.29	1,049,117.46
2350 Legal and Accounting Services	55,155.62	179,165.65	234,321.27	30,018.68	107,366.57	137,385.25
2420 Medical Services						
2440 Nursing Services	283,602.53	921,244.82	1,204,847.35	281,716.44	1,007,603.65	1,289,320.09
2700 Student Transportation Services	2,443,939.84	5,000,502.93	7,444,442.77	2,709,817.47	5,011,122.80	7,720,940.27
Total	\$3,925,311.22	\$9,334,156.21	\$13,259,467.43	\$4,174,227.30	\$9,638,870.26	\$13,813,097.56

LEA : 123467103 Souderton Area SD

Printed 10/29/2018 10:25:48 AM

	(PRINCIPAL AMOUNTS ONLY)							
<u>GOVERNMENTAL FUNDS/ ACTIVITIES</u>	Short-Term Borrowing	General Obligation Bonds/Notes	Authority Building Obligations	Other Long-Term Debt	Other Post- Employment Benefits (OPEB)	Compensated Absences	Net Pension Liability	Total
1. Debt at Beginning of Fiscal Year		68,115,000.00		225,381.00	2,654,314.00	3,018,208.00	185,588,084.00	259,600,987.00
2. Additional Debt Incurred During Year					4,245,987.00	29,188.00	1,235,721.00	5,510,896.00
3. Retirements and Repayments		7,360,000.00		75,127.00	24,585.00	91,251.00		7,550,963.00
4. Debt at End of Fiscal Year		60,755,000.00		150,254.00	6,875,716.00	2,956,145.00	186,823,805.00	257,560,920.00
5. Accreted Interest at End Of Fiscal Year								
6. Total Debt and Accreted Interest		60,755,000.00		150,254.00	6,875,716.00	2,956,145.00	186,823,805.00	257,560,920.00
7. Current Portion P&I - Due within 1 year		9,014,506.00		75,127.00	36,406.00	130,831.00		9,256,870.00
8. Interest Paid during current fiscal year		2,136,700.01						2,136,700.01

(PRINCIPAL AMOUNTS ONLY)								
<u>PROPRIETARY FUNDS</u>	Short-Term Borrowing	General Obligation Bonds/Notes	Authority Building Obligations	Other Long-Term Debt	Other Post- Employment Benefits (OPEB)	Compensated Absences	Net Pension Liability	Total
1. Debt at Beginning of Fiscal Year					19,583.00		3,057,094.00	3,076,677.00
2. Additional Debt Incurred During Year					126,570.00		19,632.00	146,202.00
3. Retirements and Repayments								
4. Debt at End of Fiscal Year					146,153.00		3,076,726.00	3,222,879.00
5. Accreted Interest at End Of Fiscal Year								
6. Total Debt and Accreted Interest					146,153.00		3,076,726.00	3,222,879.00
7. Current Portion P&I - Due within 1 year								
8. Interest Paid during current fiscal year								

LEA : 123467103 Souderton Area SD

Printed 10/29/2018 10:25:48 AM

Total Principal and Interest Payments Made by Your School - All Funds

Function	Fund		Principal (910)	Principal (920)	Interest (830)	Total (Principal +Interest)	Misc Other Uses (990)
5110	10	General Fund	7,360,000.00		2,134,558.78	9,494,558.78	
5110	20	Special Revenue Funds					
5110	30	Capital Projects Funds					
5110	40	Debt Service Fund					
5110	90	Permanent Fund					
5120	10	General Fund					
5120	20	Special Revenue Funds					
5120	30	Capital Projects Funds					
5120	40	Debt Service Fund					
Total Debt Payments - Governmental Funds			\$7,360,000.00		\$2,134,558.78	\$9,494,558.78	

Function	Fund		Principal (910)	Principal (920)	Interest (830)	Total (Principal +Interest)
5110	50	Enterprise Fund				
5110	60	Internal Service Fund				
5120	50	Enterprise Fund				
5120	60	Internal Service Fund				
Total Debt Payments - Proprietary Funds						

LEA : 123467103 Souderton Area SD

Printed 10/29/2018 10:25:48 AM

Debt Details
Governmental Funds/ Activities

Debt Category	Debt Issue Date (MM/YYYY)	Principal Amounts Only				Current Portion Due Within One Year (Principal and Interest)	Interest Paid During Fiscal Year
		Debt at Beginning of Fiscal Year	Additions	Reductions / Repayments	Debt at End of Fiscal Year		
General Obligation Bonds/Notes – CIB	01/2017	21,440,000.00		70,000.00	21,370,000.00	75,000.00	853,762.50
General Obligation Bonds/Notes – CIB	04/2015	4,545,000.00		560,000.00	3,985,000.00	666,755.00	103,380.00
General Obligation Bonds/Notes – CIB	01/2015	16,575,000.00		3,535,000.00	13,040,000.00	4,373,687.00	522,793.75
General Obligation Bonds/Notes – CIB	01/2014	9,690,000.00		5,000.00	9,685,000.00	207,131.00	202,193.76
General Obligation Bonds/Notes – CIB	09/2013	9,685,000.00		155,000.00	9,530,000.00	421,133.00	268,070.00
General Obligation Bonds/Notes – CIB	06/2009	6,180,000.00		3,035,000.00	3,145,000.00	3,270,800.00	186,500.00
Other Long Term Debt/Liabilities		225,381.00		75,127.00	150,254.00	75,127.00	
Compensated Absences		3,018,208.00	29,188.00	91,251.00	2,956,145.00	130,831.00	
Other Post-Employment Benefits (OPEB)		2,654,314.00	4,245,987.00	24,585.00	6,875,716.00	36,406.00	
Net Pension Liability		185,588,084.00	1,235,721.00		186,823,805.00		
Totals for Debt Entered:		\$259,600,987.00	\$5,510,896.00	\$7,550,963.00	\$257,560,920.00	\$9,256,870.00	\$2,136,700.01

Bond Details
Proprietary Funds

Debt Category	Debt Issue Date (MM/YYYY)	Principal Amounts Only				Current Portion Due Within One Year (Principal and Interest)	Interest Paid During Fiscal Year
		Debt at Beginning of Fiscal Year	Additions	Reductions / Repayments	Debt at End of Fiscal Year		
Other Post-Employment Benefits (OPEB)		19,583.00	126,570.00		146,153.00		
Net Pension Liability		3,057,094.00	19,632.00		3,076,726.00		
Totals for Debt Entered:		\$3,076,677.00	\$146,202.00		\$3,222,879.00		

LEA : 123467103 Souderton Area SD

Printed 10/29/2018 10:25:50 AM

General Fund (10)

Section 1: Tuition/Purchased Services as Reported within Expenditure Detail	Amount
Tuition Reported in General Fund Expenditures 1000-560	10,623,134.95
Purchased Services in General Fund Expenditures 1000-594 and 1000-597	
Section 1 Total	\$10,623,134.95

Section 2: Tuition Paid to Institution Types During Fiscal Year	Tuition Paid For Nonspecial Education	Tuition Paid For Special Education	Total
1 1306 Institutions			
2 Institutionalized Children's Programs			
3 Juveniles Incarcerated in Adult Facilities			
4 Residential Treatment Facilities		605,104.10	605,104.10
5 Other Local Education Agencies	47,196.55	28,446.56	75,643.11
6 Brick and Mortar Charter Schools	2,410,221.22	790,078.83	3,200,300.05
7 Cyber Charter Schools	430,444.49	437,154.78	867,599.27
8 Career and Technology Centers	2,224,176.38		2,224,176.38
9 Approved Private Schools		323,508.74	323,508.74
10 PA Chartered Schools for the Deaf and Blind			
11 Private Residential Rehabilitative Institutions	1,468,481.90	4,178.72	1,472,660.62
12 Juvenile Detention Centers			
13 Special Program Jointures			
14 Other Tuition Not Included Elsewhere In This Section		1,854,142.68	1,854,142.68
Section 2 Total	\$6,580,520.54	\$4,042,614.41	\$10,623,134.95

LEA : 123467103 Souderton Area SD

Printed 10/29/2018 10:25:54 AM

Food Service / Cafeteria Operations Fund (51)

3000 Operation of Non-Instructional Services		Total
100	<u>Personnel Services – Salaries</u>	
100	Personnel Services – Salaries	877,705.00
Total Personnel Services – Salaries		\$877,705.00
200	<u>Personnel Services – Employee Benefits</u>	
210	Group Insurance – Contracted Provider	456.16
220	Social Security Contributions	65,161.02
230	PSERS Retirement Contributions	332,503.00
250	Unemployment Compensation	518.51
260	Workers' Compensation	4,743.17
270	Group Insurance – Self-Insurance	130,290.14
Total Personnel Services – Employee Benefits		\$533,672.00
300	<u>Purchased Professional and Technical Services</u>	
324	Professional Educational Services – Employee Training and Development Services	3,430.00
340	Technical Services	425.00
Total Purchased Professional and Technical Services		\$3,855.00
400	<u>Purchased Property Services</u>	
430	Repairs and Maintenance Services	60,585.00
Total Purchased Property Services		\$60,585.00
500	<u>Other Purchased Services</u>	
530	Communications	1,742.00
550	Printing and Binding	140.00
580	Travel	78.00
Total Other Purchased Services		\$1,960.00
600	<u>Supplies</u>	
610	General Supplies	78,847.00
630	Food	1,053,177.00
640	Books and Periodicals	394.00
650	Supplies & Fees – Technology Related	13,382.00
Total Supplies		\$1,145,800.00
700	<u>Property</u>	
740	Depreciation	49,822.00
Total Property		\$49,822.00
800	<u>Other Objects</u>	
810	Dues and Fees	1,797.00
Total Other Objects		\$1,797.00
Total 3000 Operation of Non-Instructional Services		\$2,675,196.00

LEA : 123467103 Souderton Area SD

Printed 10/29/2018 10:25:54 AM

Food Service / Cafeteria Operations Fund (51)

3100 Food Services	Elementary	Secondary	Federal	Total
100 <u>Personnel Services – Salaries</u>				
100 Personnel Services – Salaries				877,705.00
Total Personnel Services – Salaries				\$877,705.00
200 <u>Personnel Services – Employee Benefits</u>				
210 Group Insurance – Contracted Provider				456.16
220 Social Security Contributions				65,161.02
230 PSERS Retirement Contributions				332,503.00
250 Unemployment Compensation				518.51
260 Workers' Compensation				4,743.17
270 Group Insurance – Self-Insurance				130,290.14
Total Personnel Services – Employee Benefits				\$533,672.00
300 <u>Purchased Professional and Technical Services</u>				
324 Professional Educational Services – Employee Training and Development Services				3,430.00
340 Technical Services				425.00
Total Purchased Professional and Technical Services				\$3,855.00
400 <u>Purchased Property Services</u>				
430 Repairs and Maintenance Services				60,585.00
Total Purchased Property Services				\$60,585.00
500 <u>Other Purchased Services</u>				
530 Communications				1,742.00
550 Printing and Binding				140.00
580 Travel				78.00
Total Other Purchased Services				\$1,960.00
600 <u>Supplies</u>				
610 General Supplies				78,847.00
630 Food				1,053,177.00
640 Books and Periodicals				394.00
650 Supplies & Fees – Technology Related				13,382.00
Total Supplies				\$1,145,800.00
700 <u>Property</u>				
740 Depreciation				49,822.00
Total Property				\$49,822.00
800 <u>Other Objects</u>				
810 Dues and Fees				1,797.00
Total Other Objects				\$1,797.00
Total 3100 Food Services				\$2,675,196.00

LEA : 123467103 Souderton Area SD

Printed 10/29/2018 10:25:52 AM

Internal Service Fund (60)

2000 Support Services

Total

200 Personnel Services – Employee Benefits

270 Group Insurance – Self-Insurance	9,926,745.00
--------------------------------------	--------------

Total Personnel Services – Employee Benefits	\$9,926,745.00
---	-----------------------

500 Other Purchased Services

520 Insurance – General	822,302.00
-------------------------	------------

Total Other Purchased Services	\$822,302.00
---------------------------------------	---------------------

800 Other Objects

810 Dues and Fees	334,567.00
-------------------	------------

Total Other Objects	\$334,567.00
----------------------------	---------------------

Total 2000 Support Services	\$11,083,614.00
------------------------------------	------------------------

LEA : 123467103 Souderton Area SD

Printed 10/29/2018 10:25:52 AM

Internal Service Fund (60)

2800 Support Services – Central

Elementary Secondary Federal Total

200 <u>Personnel Services – Employee Benefits</u>				
270 Group Insurance – Self-Insurance				9,926,745.00
Total Personnel Services – Employee Benefits				\$9,926,745.00
500 <u>Other Purchased Services</u>				
520 Insurance – General				822,302.00
Total Other Purchased Services				\$822,302.00
800 <u>Other Objects</u>				
810 Dues and Fees				334,567.00
Total Other Objects				\$334,567.00
Total 2800 Support Services – Central				\$11,083,614.00

LEA : 123467103 Souderton Area SD

Printed 10/29/2018 10:25:52 AM

Internal Service Fund (60)

2830 Staff Services

Elementary Secondary Federal Total

200 <u>Personnel Services – Employee Benefits</u>				
270 Group Insurance – Self-Insurance				9,926,745.00
Total Personnel Services – Employee Benefits				\$9,926,745.00
500 <u>Other Purchased Services</u>				
520 Insurance – General				822,302.00
Total Other Purchased Services				\$822,302.00
800 <u>Other Objects</u>				
810 Dues and Fees				334,567.00
Total Other Objects				\$334,567.00
Total 2830 Staff Services				\$11,083,614.00

LEA : 123467103 Souderton Area SD

Printed 10/29/2018 10:25:52 AM

Internal Service Fund (60)

2835 Health Services

Elementary Secondary Federal Total

200 <u>Personnel Services – Employee Benefits</u>				
270 Group Insurance – Self-Insurance				9,926,745.00
Total Personnel Services – Employee Benefits				\$9,926,745.00
500 <u>Other Purchased Services</u>				
520 Insurance – General				822,302.00
Total Other Purchased Services				\$822,302.00
800 <u>Other Objects</u>				
810 Dues and Fees				334,567.00
Total Other Objects				\$334,567.00
Total 2835 Health Services				\$11,083,614.00

	<u>Food Service(51)</u>	<u>Child Care Operations(52)</u>	<u>Other Enterprise(58)</u>	<u>Internal Service(60)</u>	<u>Total</u>
2000 <u>Support Services</u>					
2800 Support Services - Central				11,083,614.00	11,083,614.00
Total Support Services				\$11,083,614.00	\$11,083,614.00
3000 <u>Operation of Non-Instructional Services</u>					
3100 Food Services	2,675,196.00				2,675,196.00
Total Operation of Non-Instructional Services	\$2,675,196.00				\$2,675,196.00
TOTAL ACTUAL EXPENDITURES & OTHER FINANCING USES	\$2,675,196.00			\$11,083,614.00	\$13,758,810.00